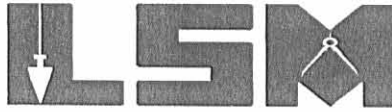


REC'D 4-5-05 8:11 AM

Lee Surveying and Mapping Co., Inc.

Land Surveys • Topography • Subdivisions • Construction Layout

117 N. Madriver St.
Bellefontaine OH 43311



Phone: (937) 593-7335
Fax: (937) 593-7444

1975-2005 - 30 YEARS OF EXCELLENCE

**GREEN
1.000 ACRE**

Lying in Virginia Military Survey 3139, Jefferson Township, Logan County, Ohio.

Being out of the Nila Jean Green original 9.699 acre tract as deeded and described in Official Record 472, Page 359 of the Logan County Records of Deeds and being more particularly described as follows:

Beginning at a MAG nail found at the intersection of the east line of Virginia Military Survey 3139 and the center-line of County Highway 5.

THENCE, with the center-line of County Highway 5 (60 feet wide) the following three courses:

S 32°-40'-46" W, a distance of 22.16 feet to a small nail found.

S 34°-09'-06" W, a distance of 912.32 feet to a railroad spike found.

S 33°-08'-00" W, a distance of 178.72 feet to a MAG nail found.

THENCE, with the northeasterly line of the Shelly Jean Wolf, etal 8.790 acre tract (O.R. 472, Pg. 357) the following two courses:

N 51°-15'-20" W, a distance of 976.64 feet to a 5/8 inch iron rod found.

N 53°-41'-53" W, a distance of 652.81 feet to a 5/8 inch iron rod found at the TRUE POINT OF BEGINNING.

THENCE, with the northwesterly line of the aforesaid 8.790 acre tract, S 36°-18'-07" W, a distance of 194.08 feet to a 5/8 inch iron rod found.

THENCE, N 53°-23'-05" W, a distance of 225.16 feet to a 5/8 inch iron rod set.

THENCE, N 36°-18'-07" E, a distance of 192.85 feet to a 5/8 inch iron rod set.

THENCE, with the southwesterly line of the Donald Lee Hone 23.877 acre tract (O.R. 613, Pg. 181), S 53°-41'-53" E, a distance of 225.16 feet to the place of beginning.

Containing 1.000 acre.

The basis for bearings is the the center-line of County Highway 5, being S 33°-08'-00"W, and all other bearings are from angles and distances measured in a field survey by Lee Surveying and Mapping Co., Inc. on April 4, 2005.

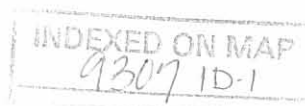


ORIGINAL STAMP IN GREEN

Description prepared by:

A handwritten signature in black ink, appearing to read 'J. Lee', written over the typed name and title.
Jeffrey I. Lee
Professional Surveyor 6359
April 4, 2005

L-2887



44210 4-3-05 8MM OK

Lee Surveying and Mapping Co., Inc.

Land Surveys • Topography • Subdivisions • Construction Layout

117 N. Madriver St.
Bellefontaine OH 43311



Phone: (937) 593-7335
Fax: (937) 593-7444

1975-2005 - 30 YEARS OF EXCELLENCE

**WOLF, ETAL
0.500 ACRE**

Lying in Virginia Military Survey 3139, Jefferson Township, Logan County, Ohio.

Being out of the Shelly Jean Wolf, Jennifer Suzanne Wolf and Syndi Jolynn Furlong original 8.790 acre tract as deeded and described in Official Record 472, Page 357 of the Logan County Records of Deeds and being more particularly described as follows:

Beginning at a MAG nail found at the intersection of the east line of Virginia Military Survey 3139 and the center-line of County Highway 5.

THENCE, with the center-line of County Highway 5 (60 feet wide) the following three courses:

S 32°-40'-46" W, a distance of 22.16 feet to a small nail found.

S 34°-09'-06" W, a distance of 912.32 feet to a railroad spike found.

S 33°-08'-00" W, a distance of 461.63 feet to a MAG nail found, passing a MAG nail found at 178.72 feet.

THENCE, with the northeasterly line of the Nila Jean Green 9.699 acre tract (O.R. 472, Pg. 359), N 53°-39'-23" W, a distance of 479.24 feet to a 5/8 inch iron rod set at the TRUE POINT OF BEGINNING, passing a 5/8 inch iron rod found at 30.05 feet.

THENCE, with the lines of the said 9.699 acre tract, the following two courses:

N 53°-39'-23" W, a distance of 176.13 feet to a 5/8 inch iron rod found.

N 41°-55'-13"E, a distance of 124.66 feet to a 5/8 inch iron rod found.

THENCE, S 53°-23'-05" E, a distance of 176.05 feet to a 5/8 inch iron rod set.

THENCE, S 41°-55'-13" W, a distance of 123.82 feet to the point of beginning.

Containing 0.500 acre.

The basis for bearings is the the center-line of County Highway 5, being S 33°-08'-00"W, and all other bearings are from angles and distances measured in a field survey by Lee Surveying and Mapping Co., Inc. on April 4, 2005.

Description prepared by:

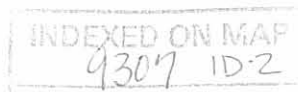


ORIGINAL STAMP IN GREEN

A handwritten signature in black ink, appearing to read 'Jeffrey I. Lee'.

Jeffrey I. Lee
Professional Surveyor 6359
April 4, 2005

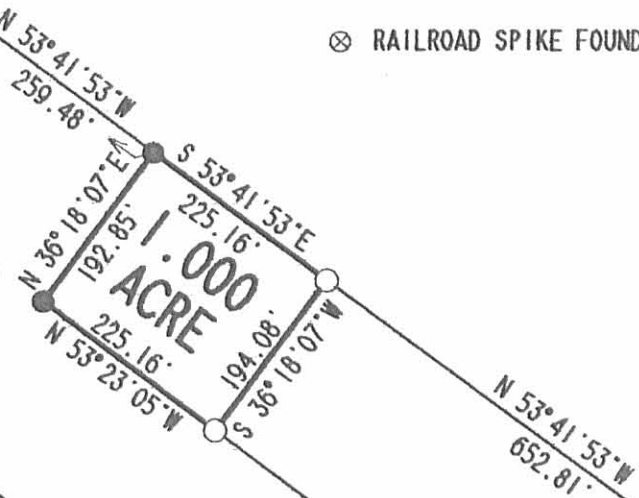
L-2887



VE 4-5-05 RML

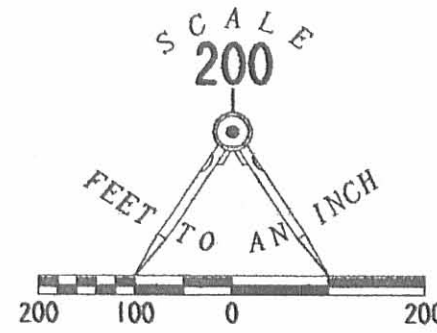
NILA JEAN GREEN
23.300 ACRES
O.R. 481, PG. 643

NILA JEAN GREEN
9.699 ACRES
O.R. 472, PG. 359



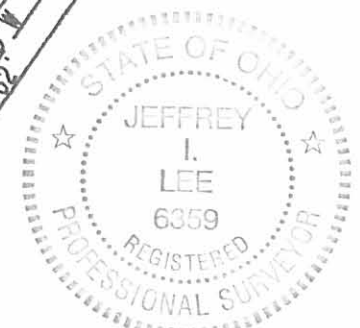
LEGEND:

- 5/8 INCH IRON ROD SET
- 5/8 INCH IRON ROD FOUND
- ⊗ MAG NAIL FOUND
- ⊕ SMALL NAIL FOUND
- ⊗ RAILROAD SPIKE FOUND



DONALD LEE HONE
23.877 ACRES
O.R. 613, PG. 181

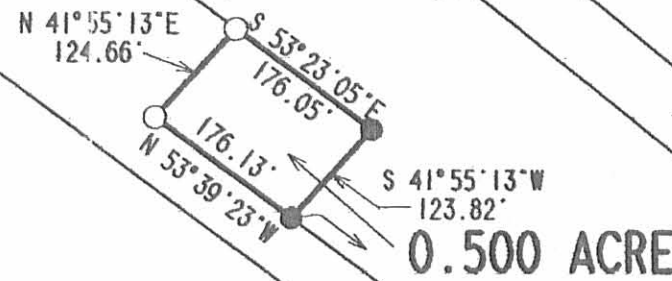
22.16'
S 32° 40' 46\"



ORIGINAL STAMP IN GREEN

**SURVEY OF 1.000 ACRE OUT OF THE
NILA JEAN GREEN
ORIGINAL 9.699 ACRE TRACT
OFFICIAL RECORD 472, PG. 359
AND SURVEY OF 0.500 ACRE OUT OF THE
SHELLY JEAN WOLF,
JENNIFER SUZANNE WOLF
AND SYNDI JOLYNN FURLONG
8.790 ACRE TRACT
OFFICIAL RECORD 472, PAGE 357
VIRGINIA MILITARY SURVEY 3139
JEFFERSON TOWNSHIP
LOGAN COUNTY, OHIO**

SHELLY JEAN WOLF,
JENNIFER SUZANNE WOLF
AND SYNDI JOLYNN FURLONG
O.R. 472, PG. 357



0.500 ACRE

COUNTY HIGHWAY 5 (60')

SURVEYED BY:

Jeffrey I. Lee

 JEFFREY I. LEE
 PROFESSIONAL SURVEYOR 6359
 APRIL 4, 2005

COPYRIGHT 2005 BY:
LEE SURVEYING & MAPPING CO., INC.
 117 North Madriver Street
 BELLEFONTAINE, OHIO 43311
 (937) 593-7335

KSR D0405 2887045 L-2887-3

2 WORKING DAYS
BEFORE YOU DIG
 CALL TOLL FREE **800-362-2764**
 OHIO UTILITIES PROTECTION SERVICE

INDEXED ON MAP
93071P

REC'D 12-26-00 smy OK ✓

Lee Surveying and Mapping Co., Inc.

Land Surveys • Topography • Subdivisions • Construction Layout

117 N. Madriver St.
Bellefontaine OH 43311



Phone: (937) 593-7335
Fax: (937) 593-7444

HONE 23.300 ACRES

Lying in Virginia Military Survey 3139, Jefferson Township, Logan County, Ohio.

Being out of the Donald E. Hone and Dixie Lee Hone original 51.69 acre tract as deeded and described in Volume 340, Page 231 of the Logan County Records of Deeds and being more particularly described as follows:

Beginning at a MAG nail found at the intersection of the east line of Virginia Military Survey 3139 and the center-line of County Highway 5.

THENCE, with the center-line of County Highway 5 (60 feet wide) the following three courses:

S 32°-40'-46" W, a distance of 22.16 feet to a small nail found.

S 34°-09'-06" W, a distance of 912.32 feet to a railroad spike found.

S 33°-08'-00" W, a distance of 178.72 feet to a MAG nail found.

THENCE, with the northeasterly line of the Shelly Jean Wolf 8.790 acre tract (O.R. 472, Pg. 357) the following two courses:

N 51°-15'-20" W, a distance of 976.64 feet to a 5/8 inch iron rod found.

N 53°-41'-53" W, a distance of 652.81 feet to a 5/8 inch iron rod found.

THENCE, with the northeasterly line of the Nila Jean Green 9.699 acre tract (O.R. 472, Pg. 359), N 53°-41'-53" W, a distance of 484.64 feet to a 5/8 inch iron rod found at the TRUE POINT OF BEGINNING.

THENCE, with the northwesterly line of the said 9.699 acre tract, S 45°-57'-37" W, a distance of 388.00 feet to a 5/8 inch iron rod found.

THENCE, with the north line of the Trell H. Yocum 107.085 acre tract (O.R. 7, Pg. 8), N 53°-33'-05" W, a distance of 1169.23 feet to a 5/8 inch iron rod found.

THENCE, with the easterly line of the Mad River Sportsman's Club, Inc. 175.024 acre tract (O.R. 132, Pg. 83), N 11°-44'-34" W, a distance of 472.36 feet to a 5/8 inch iron rod set.

THENCE, with the southerly line of the Mad River Sportsman's Club, Inc. 109.50 acre tract (O.R. 217, Pg. 208), N 79°-15'-50" E, a distance of 1117.00 feet to a 5/8 inch iron rod set.

Lee Surveying and Mapping Co., Inc.

Land Surveys • Topography • Subdivisions • Construction Layout

117 N. Madriver St.
Bellefontaine OH 43311



Phone: (937) 593-7335
Fax: (937) 593-7444

THENCE, with the westerly line of the George A. Wackerman 73.33 acre tract (Vol. 318, Pg. 955), S 1°-11'-51" E, a distance of 733.38 feet to a 5/8 inch iron rod set.

THENCE, S 2°-26'-58" W, a distance of 206.96 feet to a 5/8 inch iron rod set.

THENCE, S 53°-41'-53" E, a distance of 262.61 to the place of beginning.

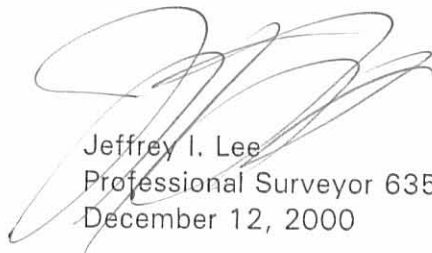
Containing 23.300 acres.

The basis for bearings is the center-line of County Highway 5 being S 33°-08'-00" W, and all other bearings are from angles and distances measured in a field survey by Lee Surveying and Mapping Co., Inc. on December 1, 2000.

Description prepared by:



ORIGINAL STAMP IN GREEN


Jeffrey I. Lee
Professional Surveyor 6359
December 12, 2000

L-2613

REC ID 12-26-00 SUM OK ✓
Lee Surveying and Mapping Co., Inc.

Land Surveys • Topography • Subdivisions • Construction Layout

117 N. Madriver St.
Bellefontaine OH 43311



Phone: (937) 593-7335
Fax: (937) 593-7444

**GREEN
0.500 ACRES**

Lying in Virginia Military Survey 3139, Jefferson Township, Logan County, Ohio.

Being out of the Nila Jean Green original 9.699 acre tract as deeded and described in Official Record 472, Page 359 of the Logan County Records of Deeds and being more particularly described as follows:

Beginning at a MAG nail found at the intersection of the east line of Virginia Military Survey 3139 and the center-line of County Highway 5.

THENCE, with the center-line of County Highway 5 (60 feet wide) the following three courses:

S 32°-40'-46" W, a distance of 22.16 feet to a small nail found.

S 34°-09'-06" W, a distance of 912.32 feet to a railroad spike found.

S 33°-08'-00" W, a distance of 178.72 feet to a MAG nail found.

THENCE, with the northeasterly line of the Shelly Jean Wolf 8.790 acre tract (O.R. 472, Pg. 357) the following two courses:

N 51°-15'-20" W, a distance of 976.64 feet to a 5/8 inch iron rod found.

N 53°-41'-53" W, a distance of 652.81 feet to a 5/8 inch iron rod found at the TRUE POINT OF BEGINNING.

THENCE, with the northwesterly line of the aforesaid 8.790 acre tract, S 36°-18'-07" W, a distance of 194.08 feet to a 5/8 inch iron rod found.

THENCE, N 53°-23'-05" W, a distance of 112.40 feet to a 5/8 inch iron rod set.


THENCE, N 36°-18'-07" E, a distance of 193.46 feet to a 5/8 inch iron rod set

THENCE, with the southwesterly line of the Donald E. Hone 51.69 acre tract (Vol. 340, Pg. 231), S 53°-41'-53" E, a distance of 112.40 feet to the place of beginning.

Containing 0.500 acre.

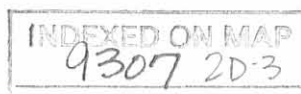
The basis for bearings is the center-line of County Highway 5 being S 33°-08'-00" W, and all other bearings are from angles and distances measured in a field survey by Lee Surveying and Mapping Co., Inc. on December 1, 2000.

Description prepared by:


Jeffrey I. Lee
Professional Surveyor 6359
December 12, 2000



ORIGINAL STAMP IN GREEN



L-2887

MAD RIVER
SPORTSMAN'S CLUB, INC.
109.50 ACRES
O.R. 217, PG. 208

23.300 ACRES

GEORGE A. WACKERMAN
AND DIANA M. WACKERMAN
73.33 ACRES
VOL. 318, PG. 955

MAD RIVER
SPORTSMAN'S CLUB, INC.
175.024 ACRES
O.R. 132, PG. 83

TRELL H. YOCUM
AND MARISA B. YOCUM
107.085 ACRES
O.R. 7, PG. 8

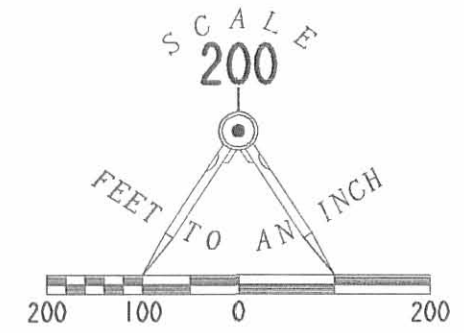
NILA JEAN GREEN
9.699 ACRES
O.R. 472, PG. 359

0.500 ACRE

DONALD E. HONE
AND DIXIE LEE HONE
51.69 ACRES
VOL. 340, PG. 231

SURVEY OF 0.500 ACRE OUT OF THE
NILA JEAN GREEN
ORIGINAL 9.699 ACRE TRACT
OFFICIAL RECORD 472, PG. 359
AND SURVEY OF 23.300 ACRES OUT OF THE
DONALD E. HONE AND DIXIE LEE HONE
ORIGINAL 51.69 ACRE TRACT
VOLUME 340, PAGE 231
VIRGINIA MILITARY SURVEY 3139
JEFFERSON TOWNSHIP
LOGAN COUNTY, OHIO

SHELLY JEAN WOLF,
JENNIFER SUZANNE WOLF
AND SYNDI JOLYNN FURLONG
8.790 ACRES
O.R. 472, PG. 357



LEGEND:

- 5/8 INCH IRON ROD SET
- 5/8 INCH IRON ROD FOUND
- ⊗ MAG NAIL FOUND
- ⊕ SMALL NAIL FOUND
- ⊗ RAILROAD SPIKE FOUND

VIRGINIA MILITARY SURVEY 3139
VIRGINIA MILITARY SURVEY 13593

COUNTY HIGHWAY 5 (60' R/W)



SURVEYED BY:
Jeffrey I. Lee
JEFFREY I. LEE
PROFESSIONAL SURVEYOR 6359
DECEMBER 1, 2000

COPYRIGHT 2000 BY:
LEE SURVEYING & MAPPING CO., INC.
117 North Madriver Street
BELLEFONTAINE, OHIO 43311
(937) 593-7335

D-392 JGREEN2 L-2887-3
L-2613-3

2 WORKING DAYS
BEFORE YOU DIG
CALL TOLL FREE **800-362-2764**
OHIO UTILITIES PROTECTION SERVICE.

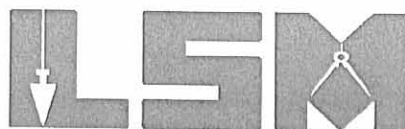
INDEXED ON MAP
9307-2P

REC'D 3-2-00 SWY OIL V

Lee Surveying and Mapping Co., Inc.

Land Surveys • Topography • Subdivisions • Construction Layout

117 N. Madriver St.
Bellefontaine OH 43311



Phone: (937) 593-7335
Fax: (937) 593-7444

JACKSON 8.790 ACRES

Lying in Virginia Military Survey 3139, Jefferson Township, Logan County, Ohio.

Being out of the Shelly Jean Jackson, Jennifer Susan Wolf, and Syndi Joleen Jackson original 19.28 acre tract as deeded and described in Official Record 344, Page 761 of the Logan County Records of Deeds and being more particularly described as follows:

Beginning at a MAG nail found at the intersection of the center-line of County Highway 5 (60 feet wide) and the east line of Virginia Military Survey 3139.

THENCE, with the center-line of County Highway 5 the following three courses:

S 32°-40'-46" W, a distance of 22.16 feet to a nail found.

S 34°-09'-06" W, a distance of 912.32 feet to a railroad spike found.

S 33°-08'-00" W, a distance of 178.72 feet to a MAG nail set at the TRUE POINT OF BEGINNING.

THENCE, with the center-line of County Highway 5, S 33°-08'-00" W, a distance of 282.91 feet to a MAG nail set.

THENCE, N 53°-39'-23" W, a distance of 655.37 feet to a 5/8 inch iron rod set, passing a 5/8 inch iron rod set at 30.05 feet.

THENCE, N 41°-55'-13" E, a distance of 124.66 feet to a 5/8 inch iron rod set.

THENCE, N 53°-23'-05" W, a distance of 1001.05 feet to a 5/8 inch iron rod set.

THENCE, N 36°-18'-08" E, a distance of 194.08 feet to a 5/8 inch iron rod set.

THENCE, with the lines of the Donald E. Hone original 61.33 acre tract (Vol. 340, Pg. 231) the following two courses:

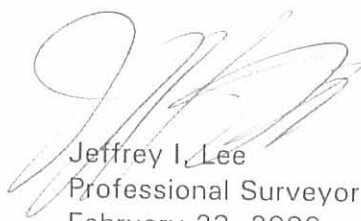
S 53°-41'-52" E, a distance of 652.81 feet to a 5/8 inch iron rod set.

S 51°-15'-20" E, a distance of 976.64 feet to the point of beginning, passing a 5/8 inch iron rod set at 946.49 feet.

Containing 8.790 acres of which 0.195 acre is within the highway right-of-way.

The basis for bearings is the center-line of County Highway 5 being S 33°-08'-00" W, and all other bearings are from angles and distances measured in a field survey by Lee Surveying and Mapping Co., Inc. on February 22, 2000.

Description prepared by:


Jeffrey I. Lee
Professional Surveyor 6359
February 23, 2000



L-2887

9307 3D-1

ORIGINAL STAMP IN GREEN

REC'D 3-2-00 SWM OK ✓

Lee Surveying and Mapping Co., Inc.

Land Surveys • Topography • Subdivisions • Construction Layout

117 N. Madriver St.
Bellefontaine OH 43311



Phone: (937) 593-7335
Fax: (937) 593-7444

JACKSON 9.699 ACRES

Lying in Virginia Military Survey 3139, Jefferson Township, Logan County, Ohio.

Being out of the Shelly Jean Jackson, Jennifer Susan Wolf, and Syndi Joleen Jackson original 19.28 acre tract as deeded and described in Official Record 344, Page 761 of the Logan County Records of Deeds and being more particularly described as follows:

Beginning at a MAG nail found at the intersection of the center-line of County Highway 5 (60 feet wide) and the east line of Virginia Military Survey 3139.

THENCE, with the center-line of County Highway 5 the following three courses:

S 32°-40'-46" W, a distance of 22.16 feet to a small nail found.

S 34°-09'-06" W, a distance of 912.32 feet to a railroad spike found.

S 33°-08'-00" W, a distance of 461.63 feet to a MAG nail set at the TRUE POINT OF BEGINNING.

THENCE, with the center-line of County Highway 5, S 33°-08'-00" W, a distance of 60.09 feet to a railroad spike found.

THENCE, with the northeast line of the Trell H. Yocum original 107.085 acre tract (O.R. 7, Pg. 8), N 53°-39'-23" W, a distance of 2197.26 feet to a 5/8 inch iron rod set, passing a 5/8 inch iron rod found at 30.01 feet.

THENCE, with the lines of the Donald E. Hone original 61.33 acre tract (Vol. 340, Pg. 231) the following two courses:

N 45°-57'-37" E, a distance of 388.00 feet to a 5/8 inch iron rod set.

S 53°-41'-52" E, a distance of 484.64 feet to a 5/8 inch iron rod set.

THENCE, S 36°-18'-08" W, a distance of 194.08 feet to a 5/8 inch iron rod set.

THENCE, S 53°-23'-05" E, a distance of 1001.05 feet to a 5/8 inch iron rod set.

THENCE, S 41°-55'-13" W, a distance of 124.66 feet to a 5/8 inch iron rod set.

THENCE, S 53°-39'-23" E, a distance of 655.37 feet to the point of beginning, passing a 5/8 inch iron rod set at 625.32 feet.

Containing 9.699 acres of which 0.042 acre is within the highway right-of-way.

The basis for bearings is the center-line of County Highway 5 being S 33°-08'-00" W, and all other bearings are from angles and distances measured in a field survey by Lee Surveying and Mapping Co., Inc. on February 22, 2000.

Description prepared by:

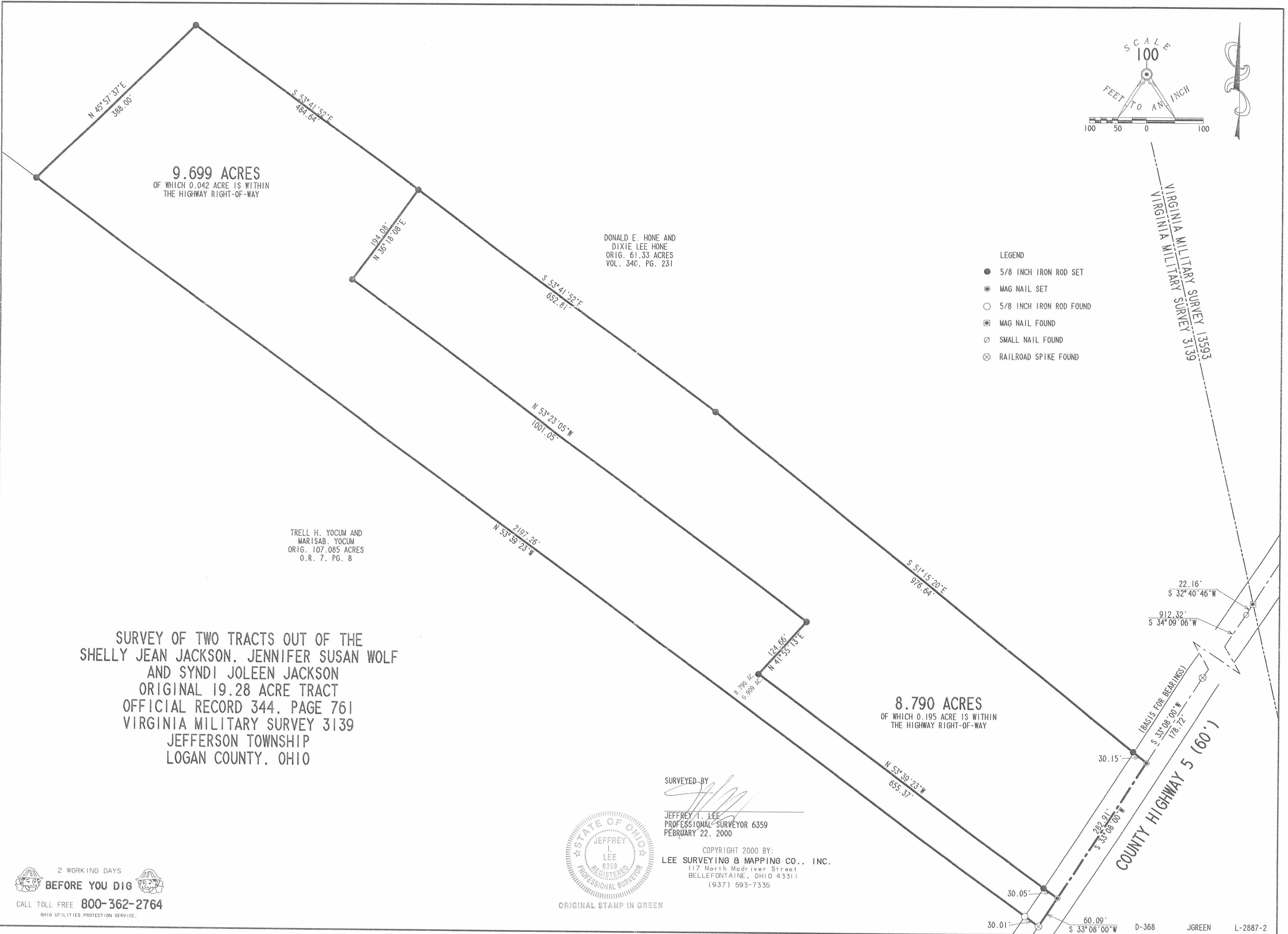
Jeffrey I. Lee
Professional Surveyor 6359
February 23, 2000

9307 3D2



ORIGINAL STAMP IN GREEN L-2887

REC'D 3-2-00 SIM OK ✓



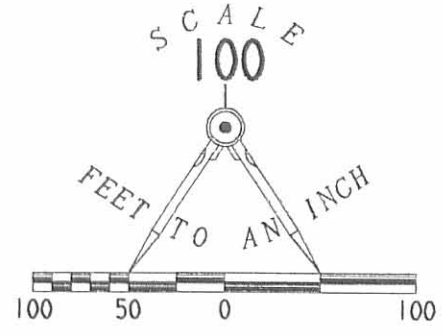
9.699 ACRES
OF WHICH 0.042 ACRE IS WITHIN
THE HIGHWAY RIGHT-OF-WAY

DONALD E. HONE AND
DIXIE LEE HONE
ORIG. 61.33 ACRES
VOL. 346, PG. 231

TRELL H. YOCUM AND
MARISAB. YOCUM
ORIG. 107.085 ACRES
O.R. 7, PG. 8

SURVEY OF TWO TRACTS OUT OF THE
SHELLY JEAN JACKSON, JENNIFER SUSAN WOLF
AND SYNDI JOLEEN JACKSON
ORIGINAL 19.28 ACRE TRACT
OFFICIAL RECORD 344, PAGE 761
VIRGINIA MILITARY SURVEY 3139
JEFFERSON TOWNSHIP
LOGAN COUNTY, OHIO

8.790 ACRES
OF WHICH 0.195 ACRE IS WITHIN
THE HIGHWAY RIGHT-OF-WAY



- LEGEND
- 5/8 INCH IRON ROD SET
 - ⊙ MAG NAIL SET
 - 5/8 INCH IRON ROD FOUND
 - ⊠ MAG NAIL FOUND
 - ⊗ SMALL NAIL FOUND
 - ⊗ RAILROAD SPIKE FOUND

VIRGINIA MILITARY SURVEY 13593
VIRGINIA MILITARY SURVEY 3139

22.16'
S 32° 40' 46" W

912.32'
S 34° 09' 06" W

(BASIS FOR BEARINGS)
S 33° 08' 00" W 178.72'
S 33° 08' 00" W 282.91'
COUNTY HIGHWAY 5 (60')
S 33° 08' 00" W 178.72'

SURVEYED BY

JEFFREY L. LEE
PROFESSIONAL SURVEYOR 6359
FEBRUARY 22, 2000



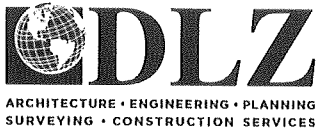
COPYRIGHT 2000 BY:
LEE SURVEYING & MAPPING CO., INC.
117 North Madriver Street
BELLEFONTAINE, OHIO 43311
(937) 593-7335

ORIGINAL STAMP IN GREEN

2 WORKING DAYS
BEFORE YOU DIG
CALL TOLL FREE 800-362-2764
OHIO UTILITIES PROTECTION SERVICE.

9307 3P

9-18-2020



INNOVATIVE IDEAS
EXCEPTIONAL DESIGN
UNMATCHED CLIENT SERVICE

GREEN AND RORRER

20.984 ACRES

Lying in Virginia Military Survey 3139, Jefferson Township, Logan County, Ohio (all records referenced herein refer to the Logan County Records of Deeds).

Being out of the Howard Kent Green and Beverly J. Rorrer Co-Trustees and Beverly J. Rorrer 23.300 acre and 8.699 acre tracts as deeded and described in Official Record 1063, Page 185, (Reference Official Record 1102, Page 525) and Official Record 1102, Page 529, Tracts I and III respectively, and being more particularly described as follows:

COMMENCING at a MAG nail found at the intersection of the common line of Virginia Military Surveys 3139 and 13593 and the center-line of County Highway 5 (60 feet wide);

THENCE, with the center-line of County Highway 5, the following three (3) courses:

1. S 33°-46'-08" W, a distance of 22.09 feet to a railroad spike found;
2. S 34°-48'-33" W, a distance of 912.13 feet to a railroad spike found; and
3. S 33°-47'-38" W, passing a MAG nail found at a distance of 178.34 feet, a total distance of 461.44 feet to a point, referenced by a railroad spike found bearing S 33°-47'-38" W, a distance of 60.09 feet;

THENCE, with northeasterly lines of said 8.699 acre tract, the following three (3) courses:

1. N 52°-59'-21" W, a distance of 655.74 feet to a 5/8 inch iron rebar found at the westerly corner of the Howard Kent Green and Beverly J. Rorrer Co-Trustees and Beverly J. Rorrer 0.500 acre tract as deeded and described in Official Record 1063, Page 185, (Reference Official Record 1102, Page 525) and Official Record 1102, Page 529, Tract II;
2. N 42°-44'-53" E, with the northwesterly line of said 0.500 acre tract, a distance of 124.61 feet to a 5/8 inch iron rebar found; and
3. N 52°-45'-03" W, a distance of 1001.23 feet to a 5/8 inch rebar found (I.D. cap stamped "LEE 6359") at the southerly corner of the Shelly Jean Wolf, Jennifer Suzanne Wolf and Syndi Jolynn Brunson 1.000 acre tract as deeded and described in Official Record 775, Page 520;





INNOVATIVE IDEAS
EXCEPTIONAL DESIGN
UNMATCHED CLIENT SERVICE

THENCE, with the common line to said 8.699 acre and 1.000 acre tracts, **N 52°-45'-03" W**, a distance of 224.73 feet to a 5/8 inch iron rebar found at the **TRUE POINT OF BEGINNING**;

THENCE, with a new division line through said 8.699 acre and 23.300 acre tracts, **N 52°-53'-41" W**, a distance of **1122.29 feet** to an iron rebar set;

THENCE, with a division line through said 23.300 acre tract, **S 37°-06'-32" W**, a distance of **189.16 feet** to an iron rebar set on the northeasterly line of the Yocum Properties, LLC, 107.085 acre tract as deeded and described in Official Record 800, Page 354, Tract I;

THENCE, with the common line to said 23.300 acre and 107.085 acre tracts, **N 52°-52'-47" W**, a distance of **371.42 feet** to a 5/8 inch iron rebar found on the easterly line of the Mad River Sportsman's Club, Inc., 175.024 acre tract as deeded and described in Official Record 132, Page 83;

THENCE, with the common line to said 23.300 acre and 175.024 acre tracts, **N 11°-03'-11" W**, a distance of **472.40 feet** to a 5/8 inch iron rebar found (I.D. cap stamped "LEE 6359") at the corner common to said 23.300 acre tract and the Mad River Sportsman's Club, Inc., 109.50 acres as deeded and described in Official Record 217, Page 208;

THENCE, with the common line to said 23.300 acre and 109.50 acre tracts, **N 79°-56'-53" E**, a distance of **1116.88 feet** to a 5/8 inch iron rod found at the corner common to said 23.300 acre tract and the George A. Wackerman and Diana M. Wackerman, 73.33 acre tract as deeded and described in Volume 318, Page 955;

THENCE, with the common line to said 23.300 acre and 73.33 acre tracts, **S 00°-30'-50" E**, a distance of **733.35 feet** to a 5/8 inch iron rebar found at a corner common to said 23.300 acre and 73.33 acre tracts and the Donald Lee Hone 23.877 acre tract as deeded and described in Official Record 613, Page 181;

THENCE, with a line common to said 23.300 acre and 23.877 acre tracts, **S 03°-09'-00" W**, a distance of **207.05 feet** to a 5/8 inch iron rebar found, being a corner common to said 23.300 acre and 23.877 acre tracts;

THENCE, with a line common to said 23.300 acre, 8.699 acre and 23.877 acre tracts, **S 53°-01'-23" E**, a distance of **522.41 feet** to a 5/8 inch

INDEXED ON MAP
9307



INNOVATIVE IDEAS
EXCEPTIONAL DESIGN
UNMATCHED CLIENT SERVICE

iron rebar found (I.D. cap stamped "LEE 6359"), corner common to said 8.699 acre and 1.000 acre tracts;

THENCE, with a common line to said 8.699 acre and 1.000 acre tracts, **S 36°-57'-36" W**, a distance of **193.54 feet** to the **POINT OF BEGINNING**.

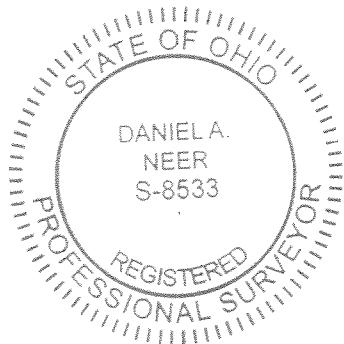
Containing **20.984 acres**, more or less, of which 19.758 acres are out of said 23.300 acre tract and 1.226 acres are out of said 8.699 acre tract.

Iron rebar set, where indicated, are 30 inches in length, 5/8 inch in diameter with a plastic I.D. cap stamped "DLZ OHIO INC."

This parcel of land is to be attached to an adjoining tract of land and is not to be used as a separate and independent parcel.

Property is subject to any and all previous easements and rights-of-way of record.

Bearings and distances, described herein, are derived from GPS observations based on Grid North, Ohio State Plane Coordinate System, North Zone, NAD83 (2011, Epoch 2010), with the center-line of County Highway 5, having a bearing of S 34°-48'-33" E. Distances are expressed in U.S. Survey Feet. All other measurements are from angles and distances measured in a field survey by DLZ on August 3, 2020.



Description prepared by:

Daniel A. Neer
Professional Surveyor No. S-8533

August 7, 2020

2021-2087.00



MAD RIVER SPORTSMAN'S CLUB, INC.
 109.50 ACRES
 O.R. 217, PG. 208

20.984 ACRES
 HOWARD KENT GREEN AND
 BEVERLY J. RORRER CO-TRUSTEES
 AND BEVERLY J. RORRER
 23.300 ACRES
 O.R. 1063, PG. 185
 (REF. O.R. 1102, PG. 525)
 O.R. 1102, PG. 529
 TRACT I

GEORGE A. WACKERMAN AND
 DIANA M. WACKERMAN
 73.33 ACRES
 VOL. 318, PG. 955

MAD RIVER
 SPORTSMAN'S CLUB, INC.
 175.024 ACRES
 O.R. 132, PG. 83

DEED AND SURVEY REFERENCES:

REFERENCE DEEDS ARE SHOWN HEREON
 LOGAN COUNTY ENGINEER'S MAP ROOM
 FILES: 7404, 9307, 1377, 2843, 1538, 8879
 AND 8160

OCCUPATION NOTE:

NO EVIDENCE OF OCCUPATION ALONG
 BOUNDARY LINES UNLESS OTHERWISE
 SHOWN

BASIS FOR BEARINGS:

BEARINGS AND DISTANCES, SHOWN HEREON,
 ARE DERIVED FROM GPS OBSERVATIONS
 BASED ON GRID NORTH, OHIO STATE PLANE
 COORDINATE SYSTEM, NORTH ZONE, NAD83
 (2011, EPOCH 2010), WITH THE CENTER-LINE
 OF COUNTY HIGHWAY 5, HAVING A BEARING
 OF S 34°48'33" E.

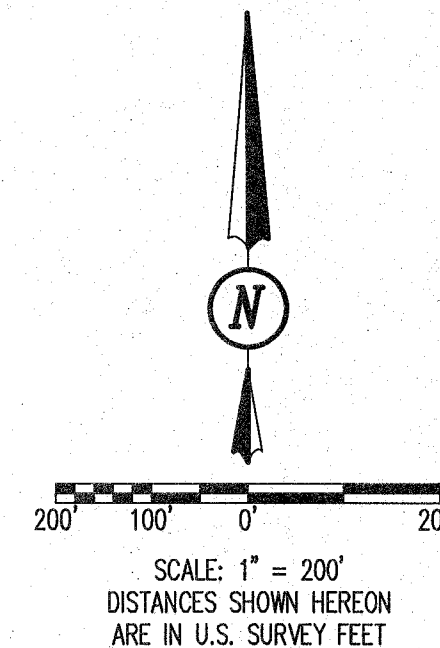
THIS SURVEY WAS PREPARED IN THE
 ABSENCE OF A COMPLETE AND ACCURATE
 TITLE SEARCH AND DOES NOT GUARANTEE
 TITLE.

YOCUM PROPERTIES, LLC
 107.085 ACRES
 O.R. 800, PG. 354
 TRACT I

BOUNDARY SURVEY OF 20.984 ACRES
 VIRGINIA MILITARY SURVEY 3139
 JEFFERSON TOWNSHIP
 LOGAN COUNTY, OHIO

NOTE:

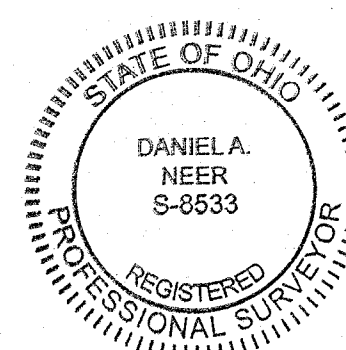
THIS PARCEL IS TO BE ATTACHED TO AN
 ADJOINING TRACT OF LAND AND IS NOT
 TO BE USED AS A SEPARATE AND
 INDEPENDENT PARCEL.



BASIS FOR BEARINGS:

- ⊗ RAILROAD SPIKE FOUND
- ⊙ MAG NAIL FOUND
- 5/8 INCH IRON REBAR FOUND
- 5/8 INCH BY 30 INCH IRON REBAR SET WITH PLASTIC I.D. CAP STAMPED "DLZ OHIO INC."
- P.O.C. = POINT OF COMMENCEMENT
- P.O.B. = POINT OF BEGINNING
- R/W = RIGHT-OF-WAY
- C/L = CENTER-LINE
- V.M.S. = VIRGINIA MILITARY SURVEY
- REF. = REFERENCE

COUNTY HIGHWAY 5 (60')



Daniel A. Neer
 Professional Surveyor No. S-8533
 August 3, 2020

DRAWN BY:	DESCRIPTION	REV. NO.	DATE
KSS			8/7/2020

COPYRIGHT 2020 BY:

 17 N. Madriver Street • Bellefontaine, OH 43311
 (937) 593-7335 • www.dlz.com
 Project #2021-2087.00