

Pursuant to orders of survey from the said Court to
 Run out by the P'tiffs in the foregoing cause, and after
 previous notices having been given by the P'tiffs. Proceed-
 ed at the request of the defendants (the P'tiffs. having sur-
 veyed under said orders and notices,) the attorney and
 agent of the P'tiffs both being present, to survey the
 lands in controversy as follows to wit: May 17th Begin-
 ning at a red oak stump designated on the following
 plat by the letter A, claimed by the defendants to be
 the south west, or beginning corner of the Representative
 of James Calderwood's survey r^o 3137 of 1100 acres and
 north west corner of said Calderwood's survey r^o 3138
 of 700 acres, the stump being at the place pointed out
 to me by John Story and referred to in his answers
 to the 5th, 6th, 7th, 8th, and 9th questions in his depositions
 on pages 9 & 10 of the depositions herewith returned
 [to the clerk's office] by me in the above causes; also the
 place pointed out to me by Ralph Knox, and referred
 to in his answers to the 1st and 2nd questions in his dep-
 ositions on page 11 of said depositions; and also the same
 place pointed out to me by William Asher, and refer-
 ed to in his deposition in said causes, on pages 12
 and 13 in said depositions, running thence south
 320 poles, (crossing a spring branch & links water at
 57 poles, a spring branch at 194 poles, a branch
 links water at 212 poles, passing Belms, and bur oak
 at 260 poles, represented on said the following plat
 by the letter O, easterly corner to John Galloway's
 survey r^o 11449, and north corner to James Denny's
 survey r^o 4957,) to an open place, designated on
 said plat by the letter D, where all the timber is
 small; but few saplings more than 25 feet high
 the smaller growth is hazle and thorn bushes
 very much like places where there have
 been Indian towns. - Thence S 75^o E 408 poles
 (crossing ~~the~~ ~~road~~ ~~at~~ ~~at~~ ~~road~~ at 45 poles, pass

-ing a walnut and elm at 110 poles, with old line
 marks, block $\text{N}^{\circ} 5$ came from this walnut, - crossing
 Mad River at 170 poles, - passing two dog woods mul-
 -berry, and white oak at 260 poles, designated on
 said plat by the letter P, east corner to James Denny's
 said survey and corner to Walter Denny's survey N°
 9592, 9618, and 10075, a hickory and white oak at
 348 poles, designated on said plat by the letter Q
 - corner to Denny's said survey, and corner to Thom-
 -as Parker's survey N° 4497, to an ash, designated on
 said plat by the letter C, which ash has been down
 for some years past; ^{found} on one side 2 marks in a
 line, and on another one mark on the trunk
 of the tree, the bark below this was broke off and
 lying on the ground in small pieces: no other
 marks were found on the ash (see the bark), an old
 hickory stump stands $\text{S} 62^{\circ} 11' 23''$ links. links dis-
 -tant, and a hickory $\text{N} 57^{\circ} \text{E}$ 1 pole distant which
 is marked as a line tree, an elm and red oak stands
 south westerly about one pole from the root of the
 ash, which are marked as corner trees, all on the
 side of a small pond. - Thence north 320 poles,
 passing 3 elms designated on said plat by the letter
 R at 42 poles corner to Parker's said survey, an
 elm and 2 dog woods at 80 poles, 8 or 10 poles to the
 east, as designated on said plat by the letter S
 and to south west corner to James McVitt's survey
 N° 4195 and 4604, crossing a spring branch at 198
 poles, passing a buckeye at 302 poles with very old line
 marks) to the place designated on said plat by
 the letter B where a sugar tree and ash formerly stood,
 as appears by the roots and remains of them such
 trees, though it is impossible to tell by what now re-
 maining of them whether they ever were marked -
 from this place a sugar tree, from which we took
 block N° 1, and designated on said plat by the
 small a near B stands $\text{N} 32^{\circ} 1/2' \text{W}$ 5 poles - on its easterly

side were 3 marks in a line up the tree, a little more to the south were 2 more marks thus, :: on the south are 5 marks in a line, 4 of them are close to each other, after taking the block from the easterly side, we discovered 2 marks on the north side one of them close in the upper side of the chop made in taking out the block. — This tree is claimed by the defendants, as being the south east corner of Calderwood's said survey N^o 3137, and north east corner to Calderwood's said survey N^o 3138 —

Thence N 15° E 408 poles, passing 3 beeches, forked white walnut and hickory stump, at 24 poles, S 86° E 11 poles distant, and designated on said plat by the letter J south west corner to Duncan & Arthur's survey N^o 4443, crossing a branch at 50, a road at 98, at 184 and 186. 2 small spring branches, a road at 206, a branch with steep banks at 222, a small drain at 233 which joins the former 4 poles below, passing two beeches, and fallen maple at 236, about 14 poles to the east as designated on said plat by the letter U and B, north corner to Arthur's said survey — crossing a branch with high steep banks at 310, a branch 7 inks water at 374, a spring branch at 396 poles, to a sugar tree and down elm designated on said plat by the letter G and 12, found the sugar tree 2 poles to the east with 3 marks on one side (thus :: one not through the bark, one of the two upper ones is up and down the tree, and appears older than the other on the south side are 3 marks, one old one, one looks like a ball had been cut out with the corner of an ax lately, and one above this was made with a large ax since the lower one on this side; on the north side are 3 marks made with a large ax lately and scarcely through the bark, from this we took the block N^o 4. The elm being down is much decayed, so that it is impossible to tell whether it ever was marked; around this sugar tree stand

5 beeches which appear to have been marked more recently than some of the marks on the sugar tree. Some of these have 3, some 4 hacks on a side in a line up the tree, and all are marked on three or more sides, on one of them are the figures 1820. This sugar tree and elm are claimed by the defendants as being the northeast corner to said Calderwood's said survey no 3137, and corner to said Calderwood's survey no 3139, and said corner is referred to by said Knox in answer to the 3^d question of his deposition before referred to. Thence $\text{S } 72^{\circ} \text{ E } 65 \text{ poles}$, (crossing a small drain at 20 poles) to a point represented on said plat by the letter K and N. Thence $\text{S } 16^{\circ} \text{ W } 240 \text{ poles}$, (crossing a line at 59 poles, a branch to links water at 66, at 160 came to sugar-camp branch, crossing it 3 in 9 poles distance) to a random stake designated on said plat by the letter Q. Thence $\text{S } 74^{\circ} \text{ W } 26 \text{ poles}$ to a point 2 poles $\text{S } 16^{\circ} \text{ W}$ from 2 sugar trees, designated on said plat by the letter P, west corner to David Bradford's survey no 3136 and south corner to John Morris's survey no 4121.

May 20th Beginning at the red oak stump at it thence $\text{S } 15^{\circ} \text{ E } 408 \text{ poles}$, (crossing a branch at 28 poles a spring branch at 46, another at 84, a branch to links water at 120, a branch 10 links water at 149, a road at 164 poles, a branch at 172, at 204 poles passing a point $\text{S } 75^{\circ} \text{ W } 204 \text{ poles}$ from the place where Isaac Jean's house stood, which house is represented on said plat by Jean's house, which ^{said} place is the same which was pointed out to me by James M. Person and referred to in his deposition on page 26 of the said depositions before referred to; also ~~the~~ pointed out to me by John Story and referred to in his answer to the 2^d interrogatory in his deposition before referred to; and also the same place as referred to in the answer of John McDonald to the 4th interrogatory put to him by the depts on the 24th page

45

of the depositions before referred to, passing a sugar tree at 280 poles, about 2 poles to the east, bearing old marks as a side line on its west side, crossing a spring branch at 292, a branch which water at 366 poles to a place designated on said plat by the letter F where the timber has been much destroyed by storm and fire; some beech, sugar trees, and poplar are lying round, and the small bushes are very thick.

Thence S 74° W 65 poles crossing a small branch at 50, passing at 62 poles through a thicket of small dogwoods, hickories, and iron woods, to a small branch, represented on said plat by the G and B. Thence N 16° W 100 poles, passing a beech at 20 poles about 4 poles to the east bearing old line marks, crossing a small spring branch at 160 poles, and the south line of Charles Spencer survey N 5° 38', and the north line of John Gallows survey N 64° 50' at 224 about 24 feet west from a lynn ash and red oak, corner to said survey and designated on said plat by the figure H, crossing a spring branch at 342 poles, near its head, a branch which water at 378, and said Spencer's north line at 380 poles, about 24 poles S 80° W from 3 sugar trees and white walnut (all down, represented on said plat by the figure I) to a line at the point designated on said plat by the letter K. Thence N 74° E 360 poles, crossing a road at 112, a branch at 142, 5 poles from its junction with the River 192 or more mouths, coming to the bank of Chad River at 164 poles, continuing down it 10 poles, crossing a spring branch at 206 poles, passing over a high knob, to a branch represented represented on said plat by the letter L.

May 22nd went to the sugar tree at the letter E. Thence N 75° W 208 poles, (crossing sugar camp branch at 58, and Chad River at 176 poles) to a point 218 poles N 15° E from the point Isaac's house. — From the red oak stump at the letter A. west 62 poles

46
to 3 sugar trees, designated on said plat by the letter M, comes to William Thom's survey no 6447 and south west corner to John Galloway's survey no 6450. Thence south 57 poles to a standing, lynn and sugar tree, and a black walnut and elm stump corner to Thom's said survey, and south east corner to Alex. S. Dandridge's survey no 3220 at the letter N. Returned to the red oak stump at A. thence S 75 E 408 poles, passing a beech at 5 poles, marked as follows, to wit: On its south side with a tomahawk, are 3 marks 2 1/2 and 4 inches apart on the easterly side near the ground are 4 marks 2 and 3 inches apart nine inches above the upper one of these is the 1st one of 3 more, 2 and 5 inches apart; on the northerly side are 3 marks contained in 6 inches on the westerly are 3 contained in 5 inches; on this tree among the marks are the effigies of 2 Indians sketched in the bark; from this tree stands another beech 2 poles distant bearing a similar effigy, all apparently of the same age which is old, crossing a branch 6 links water at 62 poles a spring branch at 90 poles, a road at 158, passing a sugar tree at 154, with 2 marks as a line on its south side, crossing the tail race from James Sawmill at 180, passing 2 poles to the north at 184 poles with old line marks on it, 3 poles to the near the bank of Mad River stands a buckeye which much resembles an old lime tree from which we took block no 3, crossing Mad River at 236, a branch at 336, passing a sugar tree with an old mark on its west side at 370 poles to a point 8 poles south from the sugar tree, from which we took block no 1 and represented on said plat by the small a near B. I certify that the survey adjoining the representative of James Calderwood surveys as

47
represented on the following plat are generally laid from the original surveys as returned into Col. Anderson's Office, by course and distance.

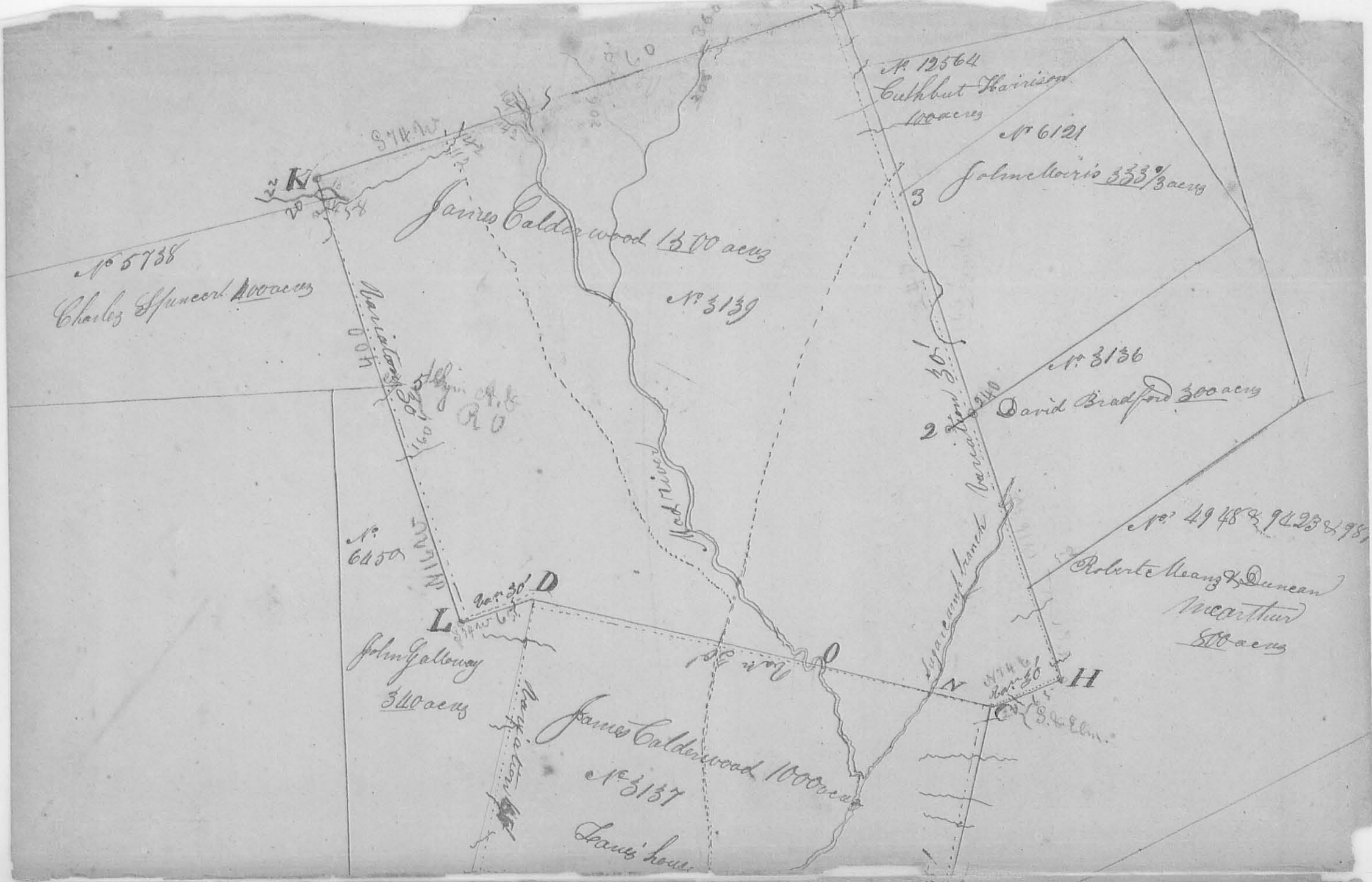
In making above surveys of Calderwoods I have noted one or more of the corners to each survey laid down adjoining the same. - I had the patents which were granted to Lucas Sullivan in 1800 for the survey $r^{\circ} 3137$ of 1000 acres, survey $r^{\circ} 3138$ of 780 acres, and survey $r^{\circ} 3139$ of 1500 acres, and run the courses called for in said patents, some of the lines were run reversing the courses called for in the patents. - The 1000 acres $r^{\circ} 3137$ Beginning with the patent at the point A as represented on the following plat runs thence $S 75^{\circ} E$ 400 poles to B thence $N 75^{\circ} E$ 400 poles to C, thence $S 75^{\circ} W$ 400 poles to D thence $N 75^{\circ} W$ 400 poles to the beginning.

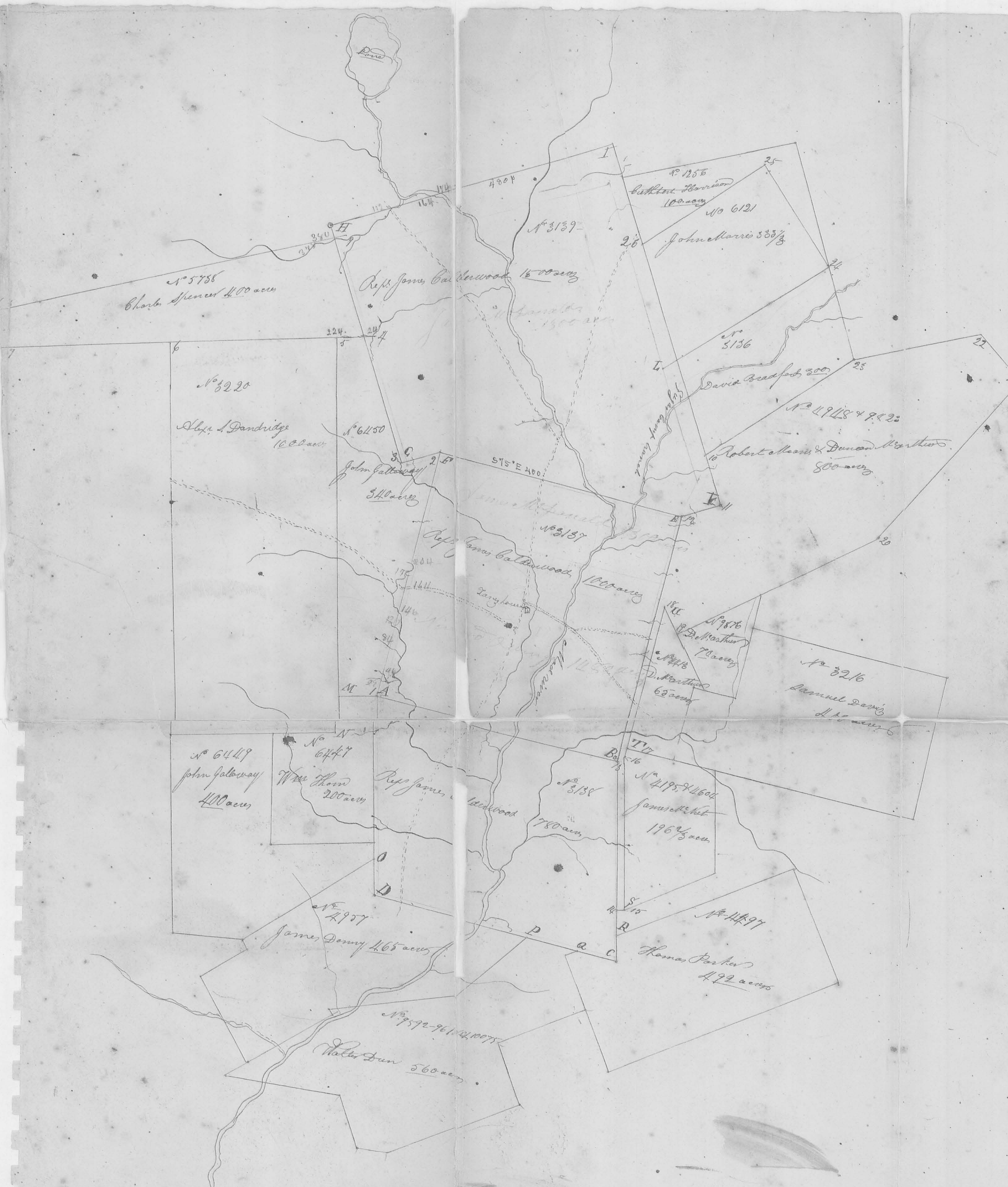
The 780 acres $r^{\circ} 3138$ begins at the said point A runs thence $S 75^{\circ} E$ 400 poles to B thence south 320 poles to C thence $N 75^{\circ} W$ 400 poles to D thence north 320 poles to the beginning.

The 1500 acres $r^{\circ} 3139$ begins at the point F runs thence $S 75^{\circ} E$ 400 poles to G, thence $N 75^{\circ} E$ 65 poles to H, thence $N 75^{\circ} W$ 60 poles to I, thence $S 75^{\circ} W$ 480 poles to J thence $N 75^{\circ} E$ 400 poles to K, thence $S 75^{\circ} E$ 65 poles to the beginning.

I meandered Mad River from Ludlow's line trap to the point represented on said plat. - also meandered sugarcamp branch from its junction with Mad River up as far as it is laid down which said sugar camp branch, as well as Mad River is laid on the said plat from the survey thereof.

The said sugarcamp was 15 links wide at its junction, nearly eddy water; & Mad River 26 link water at said junction running rapidly. The said sugar camp branch is about one third as large as Mad River at this place. - The point γ James house as represented on said plat by James house is the same as pointed out to me and referred to in the depositions of John Story, John McDonald and





This connection of survey was made and returned for the defendants in the foregoing cases or suits of judgment as what is written before with more fully explain
 J. W. Harmon
 S. d.

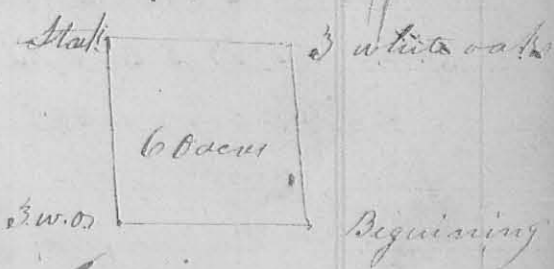
Mad River
 Ludlow Line

James McPherson, here before referred to, is very near
 the center of the survey of 1500 acres No 2137 as survey
 and laid down on the foregoing plat. From which
 said point to the junction of Sugar camp branch
 and Mad river is about 516 180/poles. The red
 drawn lines represent the plaintiff's claims
 respectively, on which their names are written
 in red.

Robert M. Harmon }
 James Mathews }
 County Surveyor

11th mo. (Nov) 7th 1826 Survey No 60
 Surveyed for Stewart and Rea as follows
 Beginning at a small red oak stump and
 2 white ash, one them which is marked
 "A" & B bears S 72° W 44 links distant
 all in the Greenville treaty line, thence
 S 78° W with said line 99.2 poles to 3 white oaks
 thence S 20° W 99.2 poles to a stake in a pear
 thence S 78° E 99.2 poles to 3 white oaks in the
 east line of the original, thence S 20° E 99.2
 poles with said line
 to the beginning containing
 Sixty acres

James Moore }
 George Finston }
 Co.



James McPherson }
 County Surveyor

11th mo. (Nov) 10th 1826 Survey No 61
 Surveyed for William S. Neal as follows. Begin
 ning at the northeast corner of James Powers a
 white oak in the east line of Jesse Davis's survey
 No. 4492, thence S 18° W 26 3/4 poles with said line
 to 2 small Sassafras, and white oak thence
 S 88° W 212 poles to a stake and 2 small hickories

8th mo. (Aug) 17th 1830

Surveyor

8197

Surveyed 200 acres of land for

Nancy McCulloch and Wm. McCulloch's heirs, beginning at a stone and buck near a red oak stump, the southwest corner of James Calderwood's survey no 3137 and north west corner to Calderwood's survey no 3138 thence with the original line between said surveys S 75 1/2 E 1/2 westerly variation (crossing a branch at 62 poles, a road at 160 poles, 223 poles to two Hickories and bur oak in said line; thence S 14 1/2 W (crossing Mad River several times, 158 poles to a stake in a prairie in the north line of James Daugherty's land; thence with said N 75 1/2 W crossing the road 183 poles to a stake



in the west line of Calderwood's survey no 3138 at W corner to Daugherty and in a baring ground; thence with said line, north 162 poles to the beginning - in the north west corner of Calderwood's

Surveyor 3138 -
 Robert Mearns }
 & Martin Mearns }

James Mearns
 C. C. L. C.

3248

8th mo. (Aug) 23rd 1830

Surveyor 145

Surveyed 5 acres of land for Herbert Baird Beginning at a stake in the west line of John Baird's Survey no 5875 and 2 poles S 52 W from a sugar tree ironwood and ash N.E. corner to Levelling Jones's Survey no 4655 I marked a small ironwood and buck; thence with the north line of Jones's survey S 52 W 32 poles to 2 small sugar trees and buck - thence S 38 E 250 poles (crossing the road from Jamesfield to Garwood mill and two small branches) to 2 bucks and 2 small sugar trees in the south line of Jones's Survey; thence with said line