

Lee Surveying and Mapping Co.



Farm Surveys • Lot Surveys • Topography • Subdivisions • Construction Layout

855 EAST SANDUSKY AVENUE
BELLEFONTAINE, OHIO 43311

(513) 593-5780

CLAYTON M. LEE, P.S.
JEFFREY I. LEE, P.S.

ROPP TO CHRISTIAN FELLOWSHIP CHURCH (5 ACRES)

Lying in V.M.S. 5738, Jefferson Township, Logan County, Ohio.

Being out of that original 44.442 acres (Presently 38.442 acres) as deeded and described in Volume 404, Page 256, Tract 1 of the Logan County Records of Deeds. Being more particularly described as follows:

Beginning at a railroad spike found on the center-line of U.S. Route 33, marking the southeast corner of grantee's 6.00 acre tract (Volume 407, Page 386) and being S 44°-57' E, along said center-line, a distance of 581.83 feet from the center-line of Township Road 55 and being Station 946+84.89 of State Highway survey of said U.S. Route 33.

THENCE, with the center-line of U.S. Route 33, S 44°-57' E, a distance of 134.47 feet to a 'PK' spike found marking the P.C. of a curve to the left at Station 948+19.36.

THENCE, with said curve, having a radius of 12,277.67 feet (Chord= S 45°-23'-40" E, 190.50 feet) a distance of 190.51 feet to a railroad spike.

THENCE, S 85°-10'-30" W, a distance of 985.46 feet to a 5/8" iron rod, passing the limited access easement line at 210.63 feet.

THENCE, N 4°-49'-30" W, a distance of 247.54 feet to a 5/8" iron rod found marking the southwest corner of the grantee's aforementioned 6.00 acre tract.

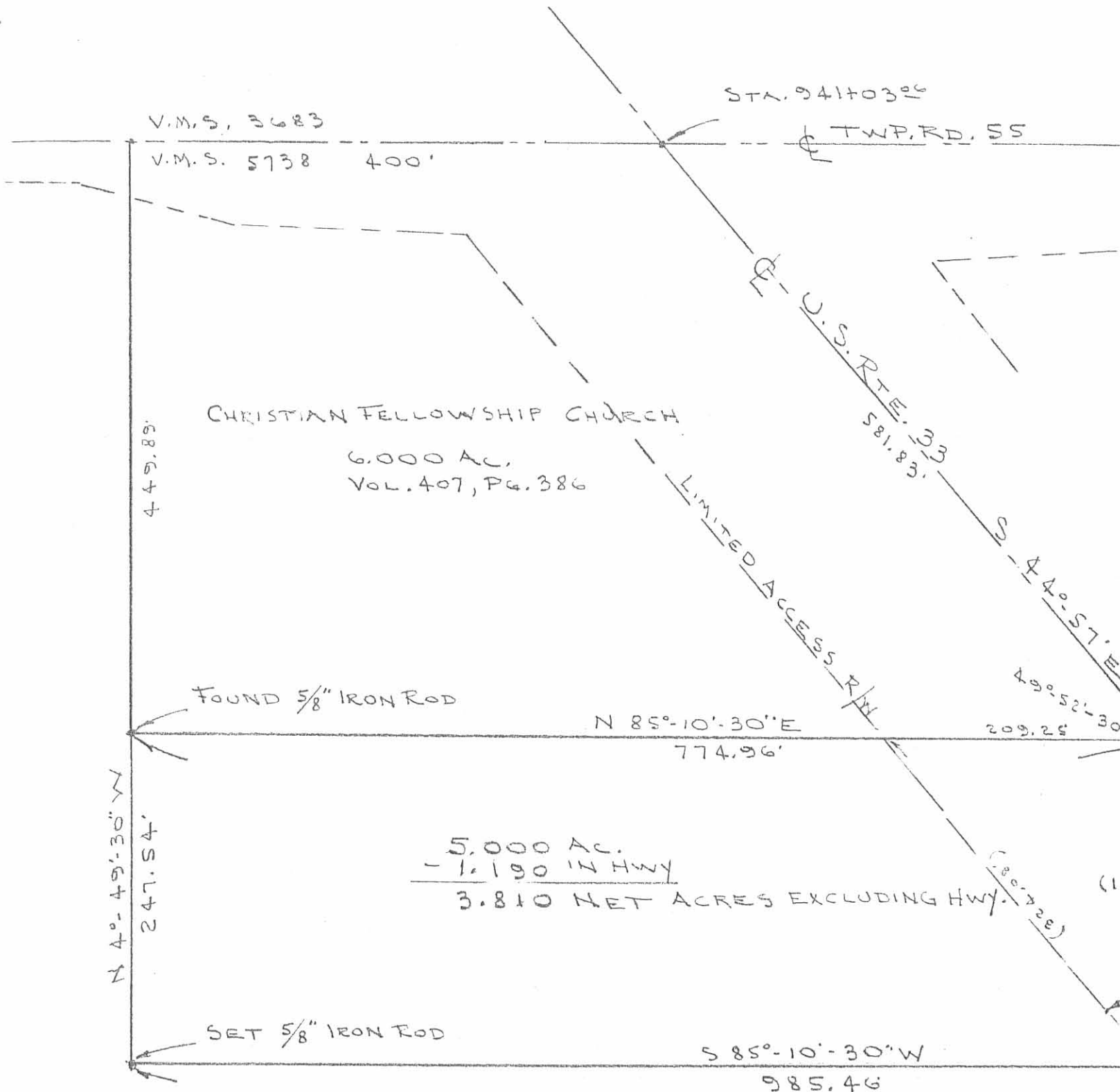
THENCE, with the south line of said 6.00 acre tract, N 85°-10'-30" E, a distance of 774.96 feet to the point of beginning. Containing 5.000 acres, of which 1.19 acres are within the highway easement, leaving a net acreage of 3.810 acres exclusive of highway area.

Prepared by:

Clayton M. Lee
Registered Surveyor No. 6181
February 14, 1985



INDEXED ON WRP



SCALE ~ 1"=100'

SURVEY OF 5,000 ACRES OUT OF
 THE DONALD ROPP 38,442 ACRES
 (VOL. 404, PG. 256, TRACT 1)
 V.M.S. 5738, JEFFERSON TWP.
 LOGAN COUNTY, OHIO

By: *Clayton M. Lee*
 CLAYTON M. LEE
 REG. SURVEYOR 6181
 FEB. 14, 1985

CURVE SEGMENT DATA

R=12,277.67
 D=0.4666° (0°-28')
 Δ=0°-53'-20.5" (0.88903)
 L=190.51
 CH: S 45°-23'-40" E 190.50



ORIGINAL STAMP IN GREEN

7308 1P

INDEXED DE 1983

5,000 AC.
 - 1.190 IN HWY
 3.810 NET ACRES EXCLUDING HWY.