

REC'D 1-10-06 BY OKQCH



Lee Surveying and Mapping Co.



Farm Surveys • Lot Surveys • Topography • Subdivisions • Construction Layout

143 EAST COLUMBUS AVENUE
BELLEFONTAINE, OHIO 43311

(513) 593-7335

JEFFREY I. LEE, P.S.

HERITAGE RESORTS, INC. 76.697 ACRE TRACT

Lying in Virginia Military Survey 3439, Jefferson Township, Logan County, Ohio.

Being the remainder of a Heritage Resorts, Inc. 104.102 acre tract as described in a mortgage in Official Record 134, Page 633, in addition to 1.434 acres as part of a 10.039 acre tract deeded to Getaway Lakes, Inc. as described in Official Record 52, Page 338, and excepting from the 104.102 acres the following: a 23.917 acre tract (O.R. 272, Pg. 40), a 3.496 acre tract (O.R. 48, Pg. 466), and 0.903 acre (parts of: Vol. 394, Pg. 586, Vol. 394, Pg. 582, O.R. 97, Pg. 998, and Vol. 394, Pg. 594). The said remainder tract is more properly described as being all of the Maple Ridge, Inc. 67.27 acre tract as deeded and described in Official Record 197, Page 327 and all of the said Getaway Lakes, Inc. 10.039 acre tract (all records refer to the Logan County Records of Deeds), and being more particularly described as follows:

Beginning at a railroad spike found at the southeast corner of the Patricia A. Sherer 2.79 acre tract (Vol. 346, Pg. 56). The said railroad spike is on the center-line of Ohio Route 540 and is N 84°-27'-59" E, a distance of 19.35 feet from a railroad spike found at Ohio Route 540 P.I. Station 107+73 of Ohio Department of Transportation right-of-way plans of S.H. 235 Sec. A., Sheet 3 of 15 (Logan County Engineer's File L-24).

THENCE, with the lines of the said 2.79 acre tract the following two courses:

N 5°-39'-20" W, a distance of 319.84 feet to a 1 inch metal pipe found, passing a 1 inch metal pipe found at 30.00 feet.

S 83°-36'-59" W, a distance of 380.24 feet to a 1 inch metal pipe found.

THENCE, with the north line of the Dewitt T. Gibbs 3.15 acre tract (Vol. 324, Pg. 177), S 80°-02'-12" W, a distance of 450.63 feet to a 1 inch metal pipe found.

THENCE, with the lines of the D. Lynn Hill 153.032 acre tract (Vol. 394, Pg. 639) the following four courses:

N 5°-37'-49" W, a distance of 1081.11 feet to a 1 inch metal pipe found.

N 83°-13'-34" E, a distance of 900.10 feet to a 5/8 inch iron rod set.

N 84°-35'-35" E, a distance of 395.00 feet to a 5/8 inch iron rod set.

N 82°-35'-02" E, a distance of 853.73 feet to a 5/8 inch iron rod found.

THENCE, with the south line of the Paul E. Bradley 105.0 acre tract (Vol. 300, Pg. 455), N 84°-20'-43" E, a distance of 421.14 feet to a 1 inch metal pipe found.

INDEXED ON MAP
7168 1D-1



Lee Surveying and Mapping Co.



Farm Surveys • Lot Surveys • Topography • Subdivisions • Construction Layout

143 EAST COLUMBUS AVENUE
BELLEFONTAINE, OHIO 43311

(513) 593-7335

JEFFREY I. LEE, P.S.

THENCE, with the lines of the Mary Beth Duncan 23.917 acre tract (O.R. 272, Pg. 40) the following two courses:

S 24°-39'-35" E, a distance of 715.68 feet to a 1 inch metal pipe found,

S 6°-00'-00" E, a distance of 269.84 feet to a 1 inch metal pipe found.

THENCE, with the north lines of the Rescom Properties, Inc. 1.523 acre tract (Vol. 394, Pg. 582) and 1.614 acre tract (Vol. 394, Pg. 586), N 85°-57'-07" W, a distance of 192.94 feet to a 5/8 inch iron rod found.

THENCE, with the lines of the Timothy M. Day 2.09 acre tract (O.R. 254, Pg. 540) the following two courses:

S 60°-51'-40" W, a distance of 165.99 feet to a 1 inch metal pipe found.

S 8°-27'-46" W, a distance of 430.83 feet to a railroad spike found, passing a 1 inch metal pipe found at 400.04 feet.

THENCE, with the center-line of Ohio Route 540 the following two courses:

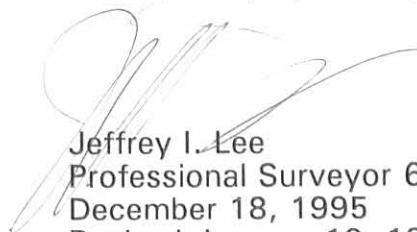
S 84°-00'-34" W, a distance of 1209.61 feet to a railroad spike found at center-line P.I. Station 111 + 10.50.

S 84°-27'-59" W, a distance of 317.87 feet to the point of beginning.

Containing 76.697 acres of which 1.055 acres are within the highway right-of-way.

The basis for bearings is the center-line of Ohio Route 540 west of Station 107 + 73 is S 83°-42'-30" W, and all other bearings are from angles and distances measured in a field survey by Lee Surveying and Mapping Company on December 15, 1995.

Description prepared by:


Jeffrey I. Lee
Professional Surveyor 6359
December 18, 1995
Revised January 10, 1996



L 271

ORIGINAL STAMP IN GREEN



Received 2-8-94
OK 9/14



Lee Surveying and Mapping Co.



Farm Surveys • Lot Surveys • Topography • Subdivisions • Construction Layout

143 EAST COLUMBUS AVENUE
BELLEFONTAINE, OHIO 43311

(513) 593-7335

JEFFREY I. LEE, P.S.

HERITAGE RESORTS, INC. 23.917 ACRES

Lying in Virginia Military Survey 3439, Jefferson Township, Logan County, Ohio.

Being out of the Heritage Resorts, Inc. 26.836 acre tract as deeded and described in Official Record 59, Page 150 of the Logan County Records of Deeds and being more particularly described as follows:

Beginning at a P.K. nail set at the intersection of center-lines of State Route 540 and County Highway 25.

THENCE, with the center-line of County Highway 25, N 23°-28'-00" W, a distance of 886.25 feet to a P.K. nail found at the TRUE POINT OF BEGINNING.

THENCE, with the north lines of the Robert E. Gilroy 5.00 acre tract (Vol. 361, Pg. 593) and the Carl L. Siebeneck 5.00 acre tract (O.R. 101, Pg. 727), S 83°-41'-15" W, a distance of 516.21 feet to a 1 inch iron pipe found.

THENCE, with the north and west lines of the Duane Hylton 8.234 acre tract (O.R. 118, Pg. 365) the following two courses.

S 83°-46'-44" W, a distance of 405.99 feet to a 1 inch iron pipe found.
S 6°-12'-35" E, a distance of 364.33 feet to a 1 inch iron pipe found.

THENCE, with the west line of the Duane Hylton 2.000 acre tract (O.R. 123, Pg. 990), S 9°-34'-05" E, a distance of 138.89 feet to a 5/8 inch iron rod set.

THENCE, through the aforesaid 26.836 acre tract the following three courses:
S 65°-15'-43" W, a distance of 155.11 feet to a 5/8 inch iron rod set.
N 71°-37'-28" W, a distance of 169.46 feet to a 5/8 inch iron rod set.
N 88°-33'-59" W, a distance of 43.86 feet to a 5/8 inch iron rod set.

THENCE, with the east line of the Rescom Properties, Inc. original 2.220 acre tract (Vol. 394, Pg. 594), N 5°-58'-16" W, a distance of 17.19 feet to a 5/8 inch iron rod set.

THENCE, with the north lines of the said 2.220 acre tract and the Rescom Properties, Inc. 1.523 acre tract (Vol. 394, Pg. 582), N 85°-57'-07" W, a distance of 381.70 feet to a 1 inch iron pipe found.

THENCE, with the east lines of the Get-A-Way Lakes 10.039 acre tract (O.R. 52, Pg. 338) the following two courses:

N 6°-00'-00" W, a distance of 269.84 feet to a 1 inch iron pipe found.
N 24°-39'-35" W, a distance of 715.68 feet to a 1 inch iron pipe found.

THENCE, with the south line of the Paul E. Bradley 105 acre tract (Vol. 300, Pg. 455) the following two courses:

N 84°-31'-31" E, a distance of 818.77 feet to a 1 inch iron pipe found.
N 83°-46'-22" E, a distance of 206.24 feet to a 1 inch iron pipe found.

THENCE, with the lines of the Get-A-Way Lakes, Inc. 3.497 acre tract (Vol. 406, Pg. 10) the following two courses:

S 2°-52'-40" W, a distance of 199.96 feet to a 1 inch iron pipe found.
S 82°-10'-40" E, a distance of 847.01 feet to a pony spike found.

THENCE, with the center-line of County Highway 25, S 23°-28'-00" E, a distance of 150.47 feet to the point of beginning.

Containing 23.917 acres of which 0.107 acre is within the highway right-of-way.

The basis for bearings is based upon the center-line of County Highway 25 being N 23°-28'-00" W, and all other bearings are from angles and distances measured in a field survey by Lee Surveying and Mapping Company on February 3, 1994.

Description prepared by:

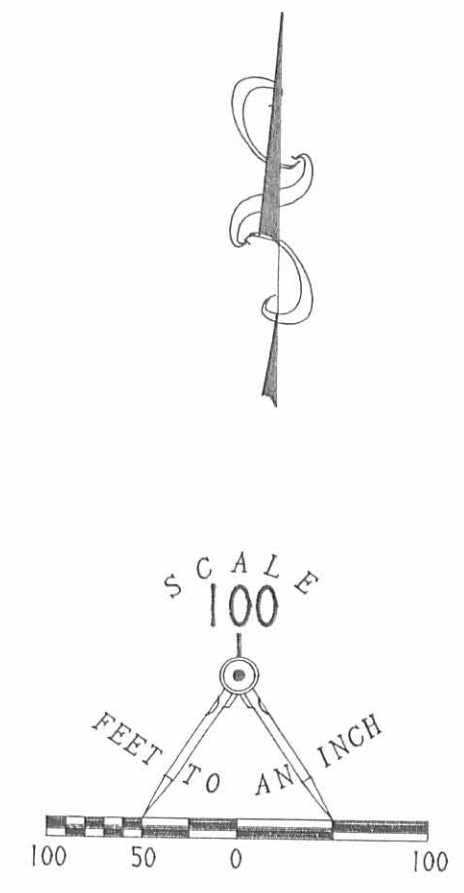
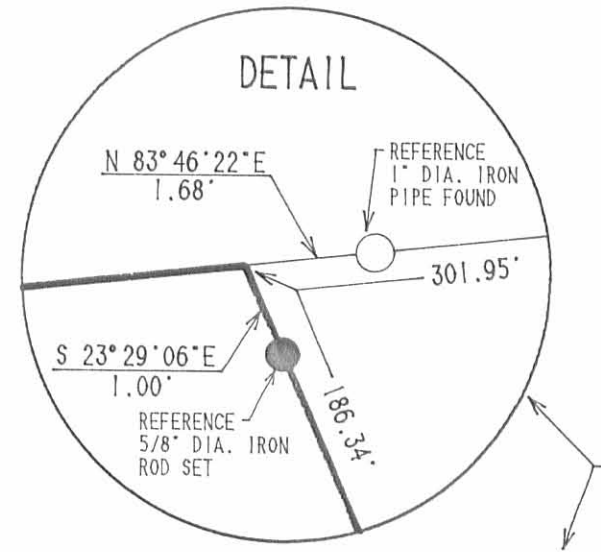
Jeffrey I. Lee
Professional Surveyor 6359
February 4, 1994
Revised February 8, 1994



L 1252

ORIGINAL STAMP IN GREEN

INDEXED ON MAP
7168 2D



- LEGEND
- 5/8" IRON ROD SET
 - ⊙ 3/4" IRON ROD FOUND
 - 1" IRON PIPE FOUND
 - ✱ P.K. NAIL SET
 - ⊕ P.K. NAIL FOUND
 - ⊖ PONY SPIKE FOUND
 - ⊗ RAILROAD SPIKE FOUND

- REFERENCES
1. LOGAN COUNTY ENGINEER'S F.B. 584, PPG. 6 & 7, AND F.B. 588, PG. 1.
 2. LOGAN COUNTY ENGINEER'S SURVEY RECORDS, DRAWER "R", FILE NUMBERS 1566, 7172, 7173, 7167, 7171, 7164 AND 7169.
 3. LOGAN COUNTY, S.H. 235 SEC. A, R/W PLANS, SHEET 3 OF 15, PLAN L-24.



SURVEY OF THREE TRACTS ENCOMPASSING THE 28.294 ACRES MORTGAGE DESCRIPTION FROM HERITAGE RESORTS, INC., AN OHIO CORPORATION TO FIDELITY SAVINGS AND LOAN ASSOCIATION IN OFFICIAL RECORD 64, PAGE 436 AND BEING OUT OF THE FOLLOWING: HERITAGE RESORTS, INC. 26.836 ACRE TRACT OFFICIAL RECORD 59, PAGE 150 AND THE RESCOM PROPERTIES, INC., AN OHIO CORPORATION 2.220, 1.523 AND 1.614 ACRE TRACTS VOLUME 394, PAGES 594, 582 AND 586 RESPECTIVELY AND ALL OF THE GET-A-WAY LAKES, INC. 3.497 ACRE TRACT OFFICIAL RECORD 48, PAGE 466 VIRGINIA MILITARY SURVEY 3439 JEFFERSON TOWNSHIP LOGAN COUNTY, OHIO

ACREAGE BREAKDOWN

23.917 ACRES OUT OF THE HERITAGE RESORTS, INC. 26.836 ACRE TRACT, OF WHICH 0.107 ACRE IS WITHIN THE HIGHWAY RIGHT-OF-WAY. (O.R. 59, PG. 150)

ALL OF THE 3.496 ACRE (3.497 ACRES BY DEED) GET-A-WAY LAKES, INC. TRACT OF WHICH 0.103 ACRE IS WITHIN THE HIGHWAY RIGHT-OF-WAY. (O.R. 48, PG. 466)

0.903 ACRE OUT OF THE FOLLOWING THREE RESCOM PROPERTIES, INC. TRACTS:

1. 0.362 ACRE OUT OF THE RESCOM PROPERTIES, INC. AN OHIO CORPORATION. 2.220 ACRE TRACT. (VOL. 394, PG. 594)
2. 0.406 ACRE OUT OF THE RESCOM PROPERTIES, INC. AN OHIO CORPORATION. 1.523 ACRE TRACT. (VOL. 394, PG. 582)
3. 0.135 ACRE OUT OF THE RESCOM PROPERTIES, INC. AN OHIO CORPORATION. 1.614 ACRE TRACT. (VOL. 394, PG. 586)

2 WORKING DAYS
BEFORE YOU DIG
CALL TOLL FREE 800-362-2764
OHIO UTILITIES PROTECTION SERVICE.

SURVEYED BY:
Jeffrey L. Lee
JEFFREY L. LEE
PROFESSIONAL SURVEYOR 6359
FEBRUARY 3, 1994

LEE SURVEYING & MAPPING CO.
143 East Columbus Avenue
BELLEFONTAINE, OHIO 43311
(513) 593-7335





Lee Surveying and Mapping Co.



Farm Surveys • Lot Surveys • Topography • Subdivisions • Construction Layout

143 EAST COLUMBUS AVENUE
BELLEFONTAINE, OHIO 43311

(513) 593-7335

JEFFREY I. LEE, P.S.

HERTIAGE RESORT'S 24.797 ACRE TRACT

Lying in V.M.S. 3439, Jefferson Township, Logan County, Ohio.

Being part of the following five tracts:

19.440 acres out of the 26.836 acres (Vol. 392, Pg. 542)

0.135 acres out of the 1.614 acres (Vol. 394, Pg. 586)

0.405 acres out of the 1.523 acres (Vol. 394, Pg. 582)

0.362 acres out of the 2.220 acres (Vol. 394, Pg. 594)

Beginning at a point in the center-line of State Route 540 a distance westerly, along said center-line, of 1156.38 feet from the center-line of County Road 25 north.

THENCE, with the west line of the Baldwin 2.00 acre tract (Vol 52, Pg. 725), N 9°-33'-05" W, a distance of 340.00 feet to the TRUE POINT OF BEGINNING.

THENCE, the following five bearings and distances:

S 65°-15'-15" W, a distance of 155.13 feet.

N 71°-37'-45" W, a distance of 169.43 feet.

N 88°-35'-25" W, a distance of 160.92 feet.

S 48°-15'-55" W, a distance of 184.84 feet.

N 60°-58'-45" W, a distance of 366.24 feet to the northeast corner of the Lasson 2.090 acre tract (Vol. 15, Pg. 980).

THENCE, following a southerly line of the Getaway Lakes 10.029 acre tract (Vol. 52, Pg. 338), S 85°-57'-40" E, a distance of 192.95 feet

THENCE, following the east lines of the aforesaid 10.039 acre tract the following two bearings and distances:

N 5°-58'-51" W, a distance of 270.00 feet.

N 24°-40'-25" W, a distance of 715.72 feet to a point on the south line of the Bradley 105 acres (Vol. 300, Pg. 445).

THENCE, with the south line of the 105 acre tract the following two bearings and distances:

N 84°-29'-12" E, a distance of 817.39 feet.

N 83°-47'-00" E, a distance of 208.00 feet to the northwest corner of the St. Clair 3.497 acre tract (Vol. 399, Pg. 759).

THENCE, with the boundary of said 3.497 acre tract, the following 2 bearings and distances:

S 2°-52'-35" W, a distance of 200.00 feet.

S 82°-10'-27" E, a distance of 847.06 feet to the center-line of County Highway 25.

THENCE, with said center-line of County Highway 25, S 23°-28'-28" E, a distance of 150.90 feet to the northeast corner of a 5.00 acre tract (Vol. 361, Pg. 593).

INDEXED ON MAP
7168 3D-1



Lee Surveying and Mapping Co.



Farm Surveys • Lot Surveys • Topography • Subdivisions • Construction Layout

143 EAST COLUMBUS AVENUE
BELLEFONTAINE, OHIO 43311

(513) 593-7335

JEFFREY I. LEE, P.S.

THENCE, with the north line of said 5.00 acre tract and the north line of another 5.00 acre tract (Vol. 404, Pg. 815, S 83°-51'-21" W, a distance of 516.90 feet to the northwest corner of an 8.234 acre tract (Vol. 399, Pg. 212).

THENCE, with the boundary of said 8.234 acre tract, the following 2 bearings and distances:

S 83°-45'-02" W, a distance of 406.22 feet.

S 6°-15'-09" E, a distance of 364.16 feet to the northwest corner of the aforementioned 2.000 acre tract (Vol. 392, Pg. 545).

THENCE, S 9°-33'-05" E, a distance of 139.06 feet to the point of beginning.

Containing 24.797 acres.

No survey made, no monuments set---not to be used for conveyance.

This description is for mortgage purposes only and is not a boundary survey as defined in 4733-37 of The Ohio Administrative Code.



ORIGINAL STAMP IN GREEN

Description prepared by:

Jeffrey I. Lee
Professional Surveyor No. 6359
May 22, 1992

L 1252

INDEXED ON MAP
7168 3D-2

PAUL E. BRADLEY, 105 AC.
D.V. 200, PG. 445

N 83°-47' E
208.00'
84°-29'-12" E
817.39'

RESCOM
1.517 AC.

GREG ST. CLAIR
VOL. 399, PG. 759
3.497 AC.

S 82°-10'-27" E
847.06'

RESCOM
24.797 ACRES

INDEXED ON MAP
716 3P

GETAWAY LAKES, INC.
D.V. 407, PG. 499

GETAWAY LAKES
10.039 ACRES

N 24°-40'-22" W
1115.12'

N 5°-58'-51" W
270.00'

S 83°-45'-02" W
406.22'

S 83°-51'-21" W
516.90'

SCALE
1" = 200'

GARY COOK
8.134 AC.
VOL. 399, PG. 212

C. Holy Cross
5.00 AC.
D.V. 404
PG. 815

K. GILROY
5.00 AC.
D.V. 261
PG. 583

155.13
S 65°-15'-15" W

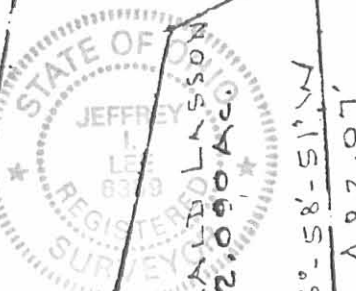
BEGINNING POINT

S 6°-15'-09" E
364.16'

2.000 AC.
BALDWIN

MAP OF 24.797 ACRES
PART OF ORIGINAL 126.84 ACRES
RESCOM PROPERTY INC. (VOL. 387, PG. 885)
V.M.S. 3439, JEFFERSON TOWNSHIP,
LOGAN COUNTY, OHIO
PREPARED BY:

JEFFREY I. LEE
PROFESSIONAL SURVEYOR NO. 6359
May 22, 1992



GERALD LASSON
2.090 AC.

N 45°-58'-51" W
482.07'

7.366 ACRES

S 85°-57'-40" E
192.97'

S 60°-08'-45" W
366.24'

S 48°-15'-55" W
184.84'

N 88°-35'-25" W
160.92'

N 71°-37'-43" W
169.43'

S 9°-33'-05" E
340.00'

S 9°-33'-05" E
479.00'

STATE ROUTE
NO. 540

S 84°-01'-00" W
932.00'

75.25'

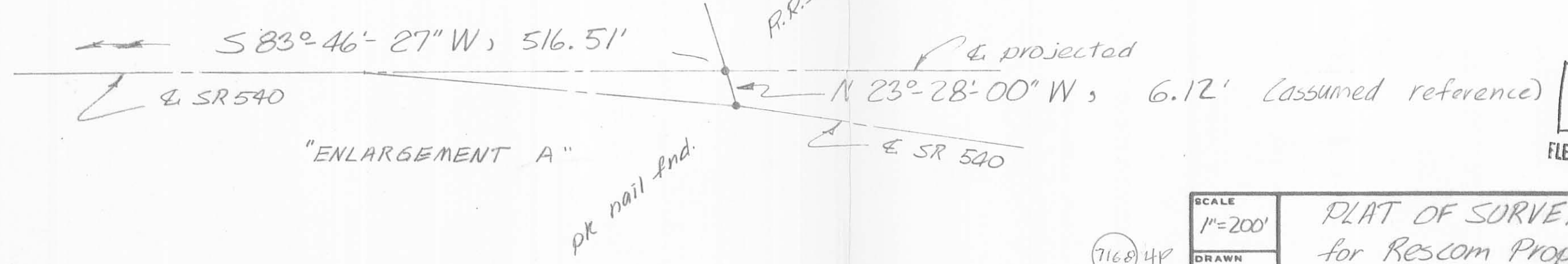
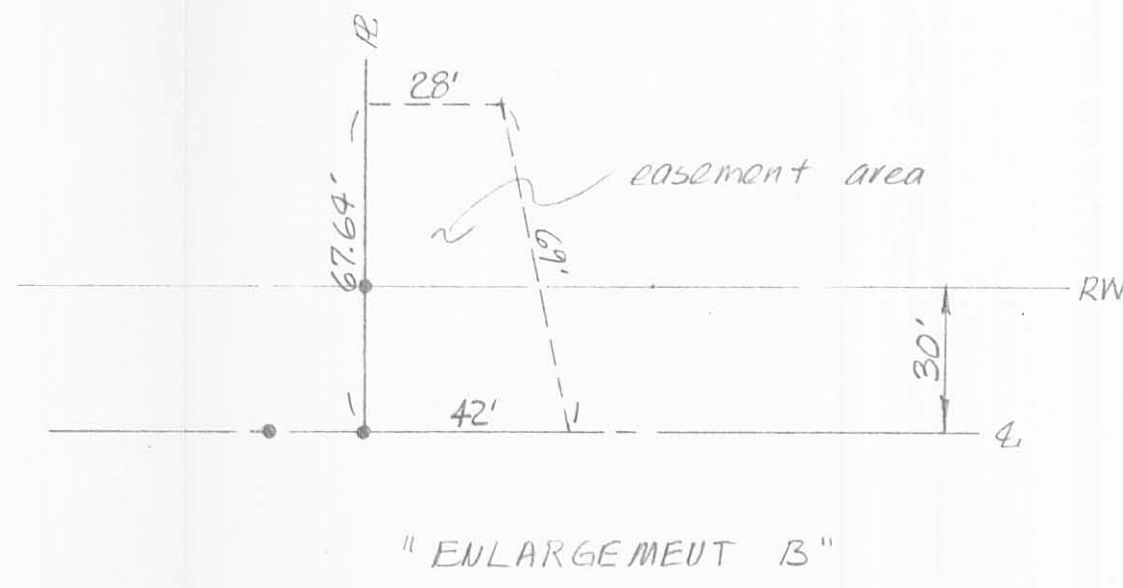
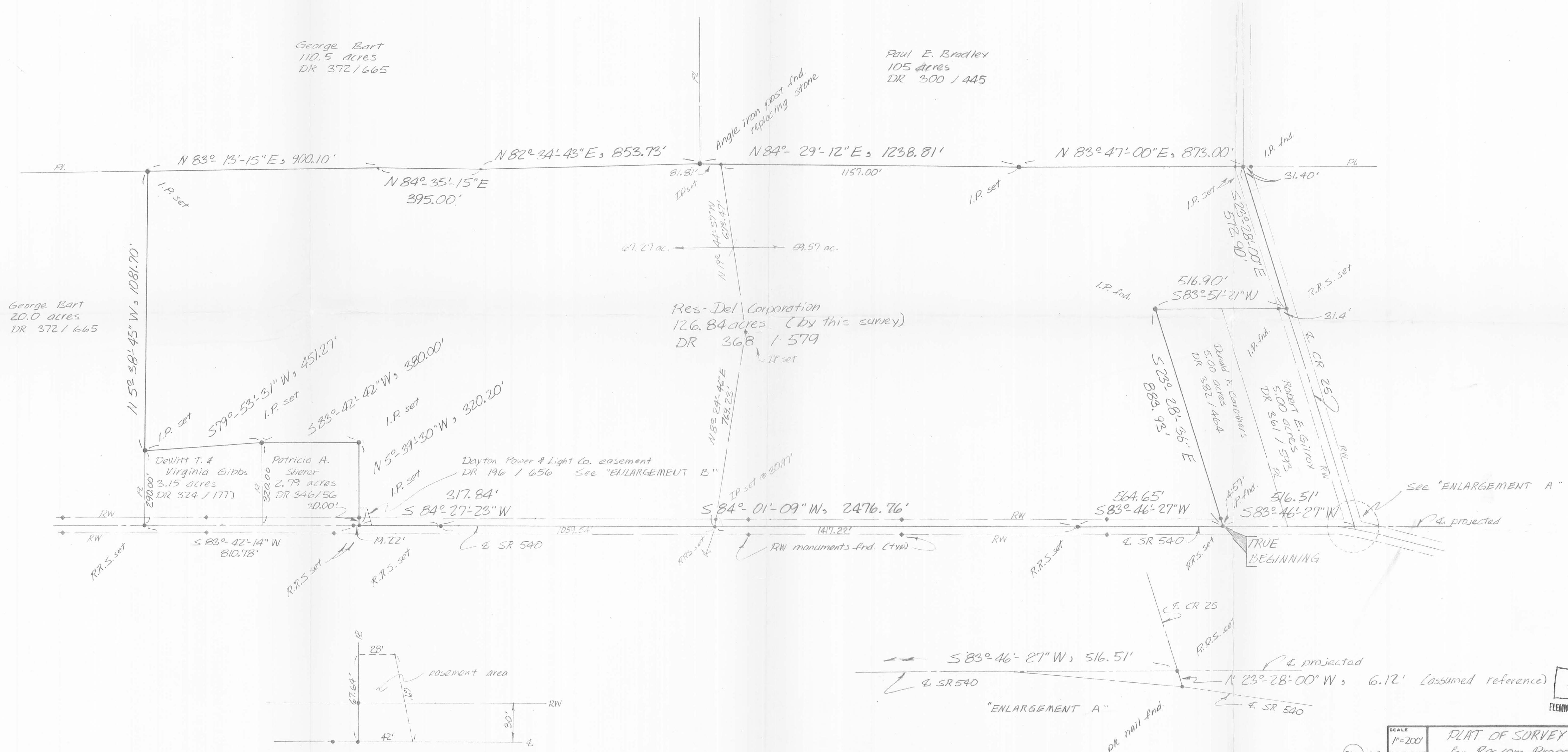
403.17'

510.51'

DRAWN FROM SURVEYS BY FLEMING PAGE E. STOLTE



- NOTES:
- 1) Bearings are based on an assumed reference.
 - 2) I.P. set are 3/4" x 30" galvanized pipe.
 - 3) Deed references are shown.
 - 4) See Logan County road Plans L-6 A, page 7 for additional information regarding SR 540.
 - 5) Both SR 540 & CR 25 have a 60' RW width.



ISSUED
JUN 5 1981
FLEMING, PAGE, STOLTE, INC.

SCALE 1"=200'	PLAT OF SURVEY for Rescom Properties, Inc.
DRAWN SAS	VMS 3439 Jefferson Twp., Logan Co., Ohio
REVISED	fleming, page, stolte, inc. consulting engineers marysville ohio
APPROVED	DATE 6-5-81 NUMBER 4-29-80

added 67.27 & 59.57 ac. tracts
added DP&L easement