

REC'D 7-24-07 SUM OK

# Lee Surveying and Mapping Co., Inc.

Land Surveys • Topography • Subdivisions • Construction Layout

117 N. Madriver St.  
Bellefontaine OH 43311



Phone: (937) 593-7335  
Fax: (937) 593-7444

## MUSSER 20.00 FEET WIDE INGRESS/EGRESS EASEMENT #1

Lying in Virginia Military Survey 3220, Jefferson Township, Logan County, Ohio.

Being a 20.00 feet wide ingress/egress easement through the Eric Musser and Holly Musser 6.000 acre tract as deeded and described in Official Record 472, Page 717 of the Logan County Records of Deeds and being more particularly described as follows:

Commencing on a 1 inch iron pipe found in a monument box on the center-line of County Highway 55 at center-line Station 55 + 45 (Logan County Engineer's survey monument record).

THENCE, with the center-line of County Highway 55 (60 feet wide), N 5°-03'-45"E, a distance of 1604.59 feet to a point on the center-line of a 60 feet wide easement, passing a railroad spike found at 1574.59 feet.

THENCE, with the center-line of the 60 feet wide easement, S 84°-56'-14"E, a distance of 986.24 feet to a point at the TRUE POINT OF BEGINNING.

THENCE, with the center-line of this easement, the following two courses:

S 5°-03'-34"W, a distance of 61.90 feet to a point.

S 84°-56'-26"E, a distance of 10.00 feet to a point at the terminus of this easement.

The basis for bearings is the center-line of County Highway 55 at survey Station 55 + 45, being N 5°-03'-45"E, and all other bearings are from angles and distances measured in a field survey by Lee Surveying and Mapping Co., Inc. on July 17, 2007.

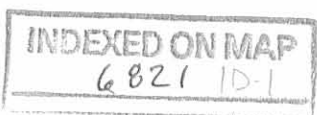


ORIGINAL STAMP IN GREEN

Description prepared by:

William K. Bruce  
Professional Surveyor 7437  
July 23, 2007

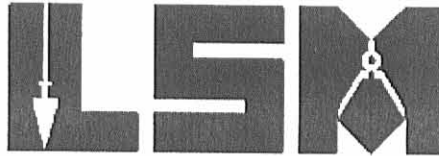
980077



REC'D 7-24-07 SMJ OK  
**Lee Surveying and Mapping Co., Inc.**

Land Surveys • Topography • Subdivisions • Construction Layout

117 N. Madriver St.  
Bellefontaine OH 43311



Phone: (937) 593-7335  
Fax: (937) 593-7444

**HEILMAN  
20.00 FEET WIDE INGRESS/EGRESS EASEMENT #2**

Lying in Virginia Military Survey 3220, Jefferson Township, Logan County, Ohio.

Being a 20.00 feet wide ingress/egress easement through the Harold Heilman and Patricia Heilman, Trustees of the Heilman Family Trust dated June 13, 1995, 35.147 acre tract as deeded and described in Official Record 298, Page 193 of the Logan County Records of Deeds and being more particularly described as follows:

Commencing on a 1 inch iron pipe found in a monument box on the center-line of County Highway 55 at center-line Station 55 + 45 (Logan County Engineer's survey monument record).

THENCE, with the center-line of County Highway 55 (60 feet wide), N 5°-03'-45"E, a distance of 1574.59 feet to a railroad spike found.

THENCE, with the lines of the Eric Musser 6.000 acre tract (O.R. 472, Pg. 717), the following four courses:

S 84°-56'-14"E, a distance of 248.71 feet to a 5/8 inch iron rod found, passing a 5/8 inch iron rod found at 30.00 feet.

S 5°-03'-46"W, a distance of 183.08 feet to a 5/8 inch iron rod found.

S 84°-50'-15"E, a distance of 747.53 feet to a 5/8 inch iron rod set.

N 5°-03'-34"E, a distance of 152.49 feet to a point at the TRUE POINT OF BEGINNING.

THENCE, with the center-line of this easement, the following three courses:

S 84°-56'-26"E, a distance of 78.78 feet to a point.

N 43°-31'-37"E, a distance of 92.30 feet to a point.

N 57°-13'-29"E, a distance of 191.57 feet to a point at the terminus of this easement.

The basis for bearings is the center-line of County Highway 55 at survey Station 55 + 45, being N 5°-03'-45"E, and all other bearings are from angles and distances measured in a field survey by Lee Surveying and Mapping Co., Inc. on July 17, 2007.



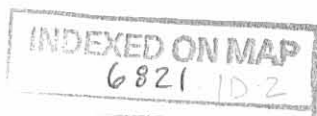
ORIGINAL STAMP IN GREEN

Description prepared by:

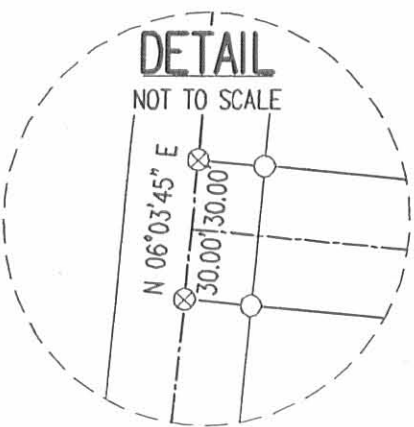
A handwritten signature in black ink that reads 'William K. Bruce'.

William K. Bruce  
Professional Surveyor 7437  
July 23, 2007

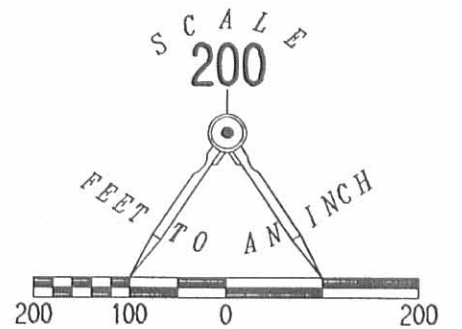
980077



REC'D 7-24-07 S.M.D.K.

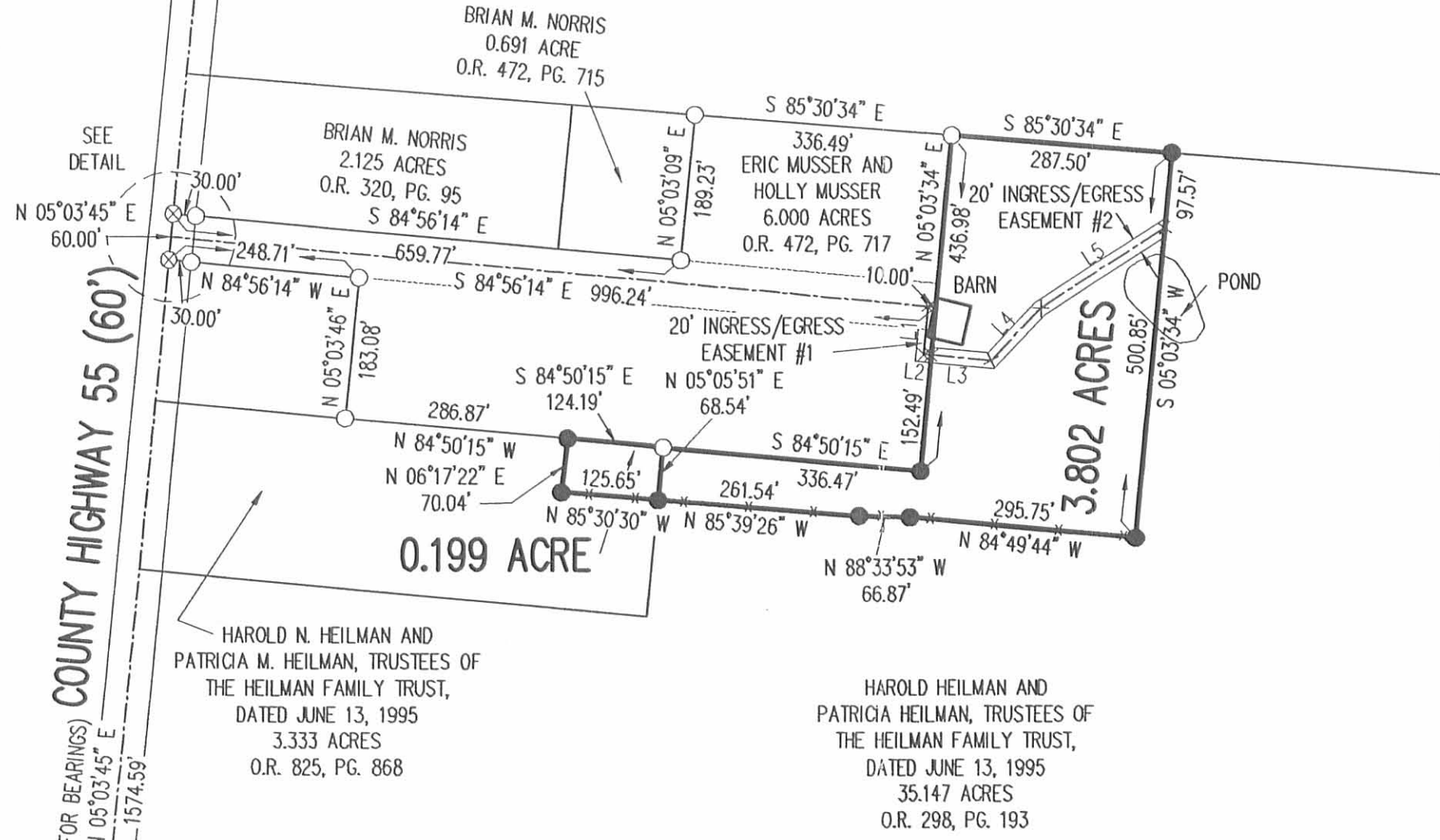


DALE JOSHUA LOVETT  
60 ACRES  
O.R. 649, PG. 301



SURVEY OF 3.802 ACRES OUT OF THE HAROLD HEILMAN AND PATRICIA HEILMAN, TRUSTEES OF THE HEILMAN FAMILY TRUST, DATED JUNE 13, 1995 35.147 ACRE TRACT OFFICIAL RECORD 298, PAGE 193 AND 0.199 ACRE OUT OF THE HAROLD N. HEILMAN AND PATRICIA M. HEILMAN, TRUSTEES OF THE HEILMAN FAMILY TRUST, DATED JUNE 13, 1995 3.333 ACRE TRACT OFFICIAL RECORD 825, PAGE 868 VIRGINIA MILITARY SURVEY 3220 JEFFERSON TOWNSHIP LOGAN COUNTY, OHIO

- LEGEND:
- ☒ 1 INCH IRON PIPE FOUND IN MONUMENT BOX
  - ⊗ RAILROAD SPIKE FOUND
  - 5/8 INCH IRON ROD FOUND
  - 5/8 INCH IRON ROD SET



BEARINGS AND DISTANCES ALONG CENTER-LINE OF 20' INGRESS/EGRESS EASEMENT

| LINE | BEARING       | DISTANCE |
|------|---------------|----------|
| L1   | S 05°03'34" W | 61.90'   |
| L2   | S 84°56'26" E | 10.00'   |
| L3   | S 84°56'26" E | 78.78'   |
| L4   | N 43°31'37" E | 92.30'   |
| L5   | N 57°13'29" E | 191.57'  |



SURVEYED BY:  
*William K. Bruce*  
WILLIAM K. BRUCE  
PROFESSIONAL SURVEYOR 7437  
JULY 17, 2007  
REVISED JULY 23, 2007  
COPYRIGHT 2007 BY:  
LEE SURVEYING & MAPPING CO., INC.  
117 North Madriver Street  
BELLEFONTAINE, OHIO 43311  
(937) 593-7335  
surveys@lsminc.us  
KSS D0707 980077 L-980-3

2 WORKING DAYS BEFORE YOU DIG  
CALL TOLL FREE 800-362-2764  
OHIO UTILITIES PROTECTION SERVICE

STATION 55+45  
LOGAN COUNTY ENGINEER'S SURVEY MONUMENT RECORD

INDEXED ON MAP 6821 1P

REC'D 7-11-07 SMY DK

# Lee Surveying and Mapping Co., Inc.

Land Surveys • Topography • Subdivisions • Construction Layout

117 N. Madriver St.  
Bellefontaine OH 43311



Phone: (937) 593-7335  
Fax: (937) 593-7444

## LOVETT 69.102 ACRES

Lying in Virginia Military Survey 3220, Jefferson Township, Logan County, Ohio.

Being all of the Dale Joshua Lovett 60 acre tract as deeded and described in Official Record 649, Page 301 of the Logan County Records of Deeds and being more particularly described as follows:

Commencing on a 1-1/4 inch iron pipe found on the intersection of center-lines of County Highway 10 and County Highway 55.

THENCE, with the center-line of County Highway 55 (60 feet wide), S 4°42'-18"W, a distance of 1486.24 feet to a 3/4 inch iron bar found at center-line Station 86 + 30 (Logan County Engineer's Field Book 607, Page 33) at the TRUE POINT OF BEGINNING.

THENCE, with the south lines of the Ralph R. Williams, Jr., 1.993 acre tract (O.R. 425, Pg. 901) and the Dwight M. Rogers, Trustee, 10.42 acre tract and 15.53 acre tract (O.R. 555, Pg. 53, Parcel III and Parcel II), S 86°36'-55"E, a distance of 2342.23 feet to a 5/8 inch iron rod found, passing a 5/8 inch iron rod set at 30.01 feet.

THENCE, with the east line of the Treelinks, Inc., 150.729 acre tract (O.R. 190, Pg. 536), S 5°47'-01"W, a distance of 1312.18 feet to a 5/8 inch iron rod set.

THENCE, with the north lines of the Harold Heilman and Patricia Heilman, Trustees, 35.147 acre tract (O.R. 298, Pg. 193), the Eric Musser 6.000 acre tract (O.R. 472, Pg. 717) and the Brian M. Norris 0.691 acre tract (O.R. 472, Pg. 715) and 2.125 acre tract (O.R. 320, Pg. 95), N 85°30'-34"W, a distance of 2326.79 feet to a railroad spike found on the center-line of County Highway 55, passing a 5/8 inch iron rod found at 2296.77 feet.

THENCE, with the center-line of County Highway 55, the following two courses:

N 5°02'-05"E, a distance of 866.92 feet to a railroad spike found at center-line Station 82 + 30 (Logan County Engineer's Field Book 607, Page 33).

N 5°24'-13"E, a distance of 399.80 feet to the point of beginning.

Containing 69.102 acres, of which 0.873 acre is within the highway right-of-way.

The basis for bearings is the center-line of County Highway 55 south of County Highway 10, being S 4°42'-18"W, and all other bearings are from angles and distances measured in a field survey by Lee Surveying and Mapping Co., Inc. on July 3, 2007.



ORIGINAL STAMP IN GREEN

Description prepared by:

William K. Bruce  
Professional Surveyor 7437  
July 3, 2007

4464067





REC'D 7-11-07 SWM/OLC

COUNTY HIGHWAY 10

STATION 86+30  
LOGAN COUNTY ENGINEER'S  
F.B. 607, PG. 33

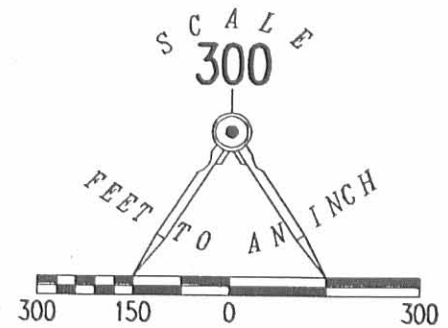
(BASIS FOR BEARINGS)  
S 04°42'18" W  
1486.24'

30.01'

DWIGHT M. ROGERS,  
TRUSTEE  
10.42 ACRES  
O.R. 555, PG. 53  
PARCEL III

DWIGHT M. ROGERS,  
TRUSTEE  
15.53 ACRES  
O.R. 555, PG. 53  
PARCEL II

JOHN L. DILLION  
10.074 ACRES  
O.R. 92, PG. 626



- LEGEND:
- ⊙ 1-1/4 INCH IRON PIPE FOUND
  - ▣ 3/4 INCH IRON BAR FOUND
  - ⊗ RAILROAD SPIKE FOUND
  - 5/8 INCH IRON ROD FOUND
  - 5/8 INCH IRON ROD SET

STATION 82+30  
LOGAN COUNTY ENGINEER'S  
F.B. 607, PG. 33

COUNTY HIGHWAY 55 (60')

N 05°24'13" E  
399.80'

N 05°02'05" E  
866.92'

69.102 ACRES  
OF WHICH 0.873 ACRE IS WITHIN  
THE HIGHWAY RIGHT-OF-WAY

DALE JOSHUA LOVETT  
60 ACRES  
O.R. 649, PG. 301

RETRACEMENT SURVEY OF THE  
DALE JOSHUA LOVETT  
60 ACRE TRACT  
OFFICIAL RECORD 649, PAGE 301  
VIRGINIA MILITARY SURVEY 3220  
JEFFERSON TOWNSHIP  
LOGAN COUNTY, OHIO

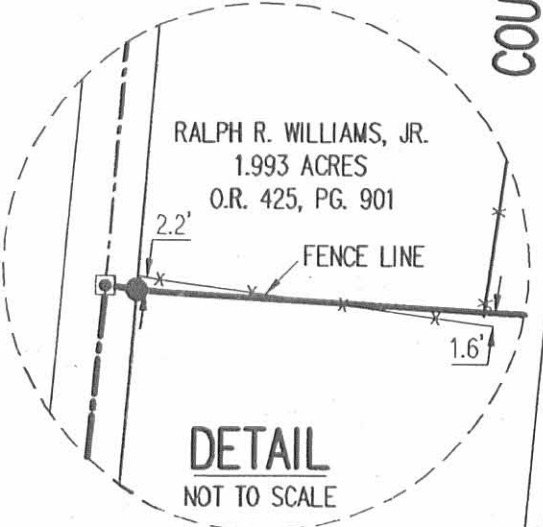
TREELINKS, INC.  
150.729 ACRES  
O.R. 190, PG. 536

SURVEYED BY:

*William K Bruce*  
WILLIAM K. BRUCE  
PROFESSIONAL SURVEYOR 7437  
JULY 3, 2007



COPYRIGHT 2007 BY:  
LEE SURVEYING & MAPPING CO., INC.  
117 North Madriver Street  
BELLEFONTAINE, OHIO 43311  
(937) 593-7335  
surveys@lsminc.us  
KSR D0707 4464067 L-4464-3



30.02' BRIAN M. NORRIS  
2.125 ACRES  
O.R. 320, PG. 95

ERIC MUSSER  
6.000 ACRES  
O.R. 472, PG. 717

BRIAN M. NORRIS  
0.691 ACRE  
O.R. 472, PG. 715

2326.79'  
N 85°30'34" W

HAROLD HEILMAN AND  
PATRICIA HEILMAN, TRUSTEE  
35.147 ACRES  
O.R. 298, PG. 193

INDEXED ON MAP  
6821 2P

2 WORKING DAYS  
BEFORE YOU DIG  
CALL TOLL FREE 800-362-2764  
OHIO UTILITIES PROTECTION SERVICE

12661D 9-25-00 smy ok gch

# Lee Surveying and Mapping Co., Inc.

Land Surveys • Topography • Subdivisions • Construction Layout

117 N. Madriver St.  
Bellefontaine OH 43311



Phone: (937) 593-7335  
Fax: (937) 593-7444

## HEILMAN 6.000 ACRE

Lying in the Virginia Military Survey 3220, Jefferson Township, Logan County, Ohio.

Being out of the Harold & Patricia Heilman Trustees of the Heilman Family Trust original 35.147 acre tract as deeded and described in Official Record 298, Page 193 of the Logan County Records of Deeds and being more particularly described as follows:

Beginning at a railroad spike found at the northeast corner of the Belle View Estates Subdivision (Plat Cabinet A, Slide 677) and on the center-line of County Highway 55 (60 feet wide).

THENCE, with the center-line of County Highway 55, N 2°-00'-00" E, a distance of 9.60 feet to a railroad spike found.

THENCE, with the south line and the south line extended of the Brian M. Norris 2.125 acre tract (O.R. 320, Pg. 95), S 88°-00'-00" E, a distance of 659.77 feet to a 5/8 inch iron rod set passing a 5/8 inch iron rod found at 30.00 feet.

THENCE, N 2°-00'-00" E, a distance of 189.23 feet to a 5/8 inch iron rod set.

THENCE, with the south line of the Robert J. Lovett, Jr. 60.0 acre tract (O.R. 39, Pg. 187), S 88°-34'-19" E, a distance of 336.49 feet to a 5/8 inch iron rod set.

THENCE, S 2°-00'-00" W, a distance of 436.98 feet to a 5/8 inch iron rod set.

THENCE, with the north line extended and the north line of the Robert V. Hertenstein 3.333 acre tract (O.R. 288, Pg. 669), N 87°-54'-00" W, a distance of 747.53 feet to a 5/8 inch iron rod found.

THENCE, with the lines of the Janet S. Franz 1.044 acre tract (O.R. 405, Pg. 784), the following 2 courses:

N 2°-00'-00" E, a distance of 183.08 feet to a 5/8 inch iron rod found.

N 88°-00'-00" W, a distance of 248.71 feet to a railroad spike found, passing a 5/8 inch iron rod found at 218.71 feet.

THENCE, with the center-line of County Highway 55, N 2°-00'-00" E, a distance of 50.40 feet to the point of beginning.

Containing 6.000 acres of which 0.041 acre is within the highway right-of-way.

The basis for bearings is the center-line of County Highway 55 being N 2°-00'-00" E, and all other bearings are from angles and distances measured in a field survey by Lee Surveying and Mapping Co., Inc. on August 30, 1999.

Description prepared by:

Jeffrey I. Lee  
Professional Surveyor 6359  
September 2, 1999



ORIGINAL STAMP IN GREEN

INDEXED ON MAP  
0821 3D-1

L-980

REC'D 10-6-00 SMJ OK ✓

# Lee Surveying and Mapping Co., Inc.

Land Surveys • Topography • Subdivisions • Construction Layout

117 N. Madriver St.  
Bellefontaine OH 43311



Phone: (937) 593-7335  
Fax: (937) 593-7444

## HEILMAN INGRESS/EGRESS EASEMENT

Lying in the Virginia Military Survey 3220, Jefferson Township, Logan County, Ohio.

Reserving a 60 feet wide ingress/egress easement over the Harold & Patricia Heilman Trustees of the Heilman Family Trust original 35.147 acre tract as deeded and described in Official Record 298, Page 193 of the Logan County Records of Deeds and being more particularly described as follows:

Beginning at a railroad spike found at the northeast corner of the Belle View Estates Subdivision (Plat Cabinet A, Slide 677) and on the center-line of County Highway 55 (60 feet wide).

THENCE, with the center-line of County Highway 55, S 2°-00'00" W, a distance of 20.40 feet to a point at the TRUE POINT OF BEGINNING.

THENCE, with the center-line of the said easement, S 88°-00'-00" E, a distance of 996.24 feet to the terminus of this easement on the east line of a 6.000 acre tract.

The basis for bearings is the center-line of County Highway 55 being N 2°-00'-00" E, and all other bearings are from angles and distances measured in a field survey by Lee Surveying and Mapping Co., Inc. on August 30, 1999.

Description prepared by:

A handwritten signature in blue ink, appearing to read 'Jeffrey I. Lee', is written over a circular professional seal.

Jeffrey I. Lee  
Professional Surveyor 6359  
September 2, 1999  
Revised September 29, 2000

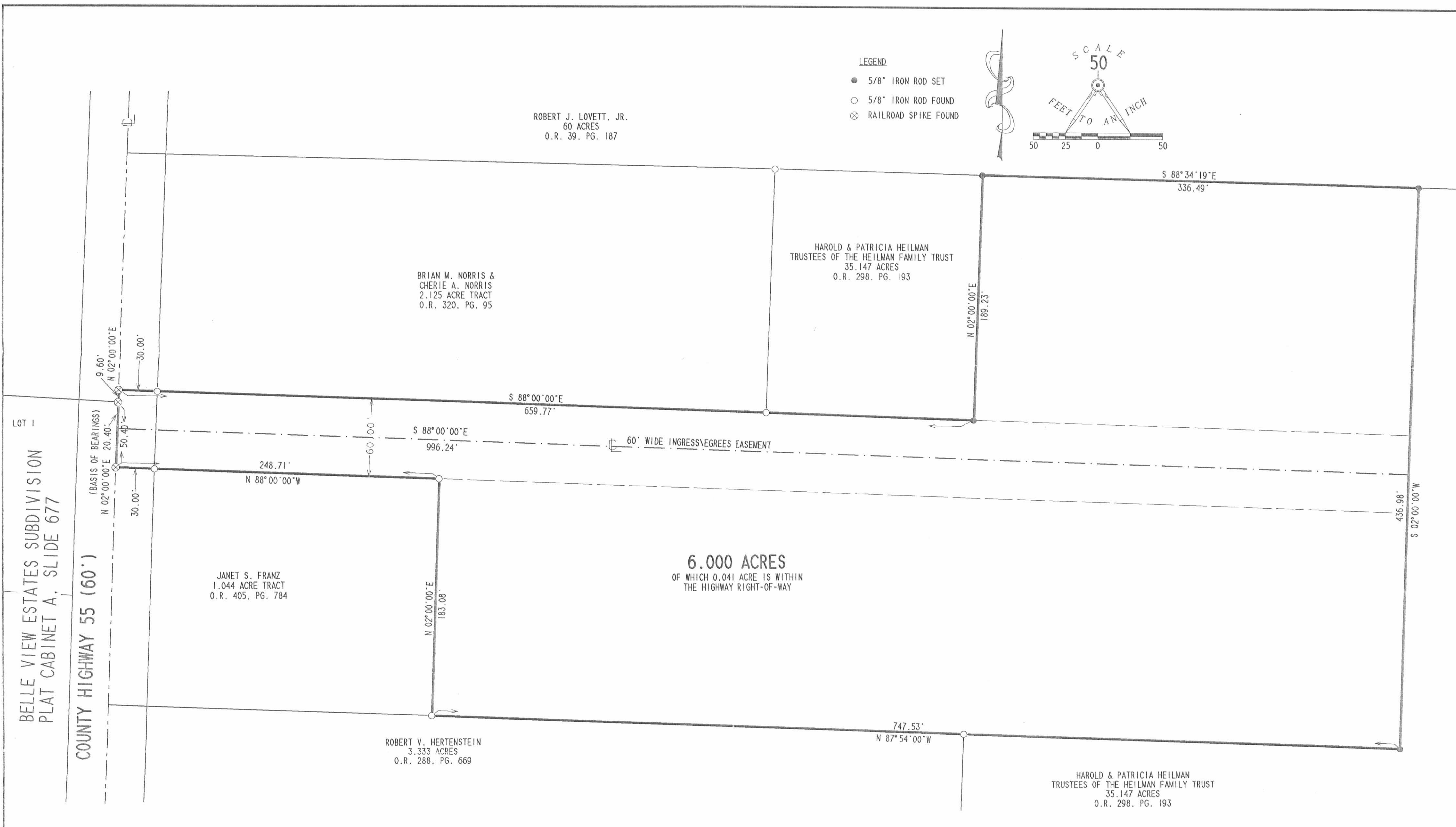


ORIGINAL STAMP IN GREEN

L-980

6821 3D-2

REV'D 9-25-00 SMJ/ML



**SURVEY OF 6.000 ACRES OUT OF THE HAROLD AND PATRICIA HEILMAN TRUSTEES OF THE HEILMAN FAMILY TRUST ORIGINAL 35.147 ACRES OFFICIAL RECORD 298, PAGE 193 VIRGINIA MILITARY SURVEY 3220 JEFFERSON TOWNSHIP LOGAN COUNTY, OHIO**



SURVEYED BY:  
*William K. Bruce*  
WILLIAM K. BRUCE  
PROFESSIONAL SURVEYOR 7437  
AUGUST 30, 1999  
APPENDED JUNE 1, 2000  
COPYRIGHT 1999 BY:  
**LEE SURVEYING & MAPPING CO., INC.**  
117 North Madriver Street  
BELLEFONTAINE, OHIO 43311  
(937) 593-7335

2 WORKING DAYS  
**BEFORE YOU DIG**  
CALL TOLL FREE **800-362-2764**  
OHIO UTILITIES PROTECTION SERVICE.

6821 3P

D 354 HEILM55 HEILMAN2.DAT L-980-2



REVISED 7-11-07 SMY/AL

# Lee Surveying and Mapping Co., Inc.

Land Surveys • Topography • Subdivisions • Construction Layout

117 N. Madriver St.  
Bellefontaine OH 43311



Phone: (937) 593-7335  
Fax: (937) 593-7444

## HEILMAN 0.199 ACRE

Lying in Virginia Military Survey 3220, Jefferson Township, Logan County, Ohio.

Being out of the Harold N. Heilman and Patricia M. Heilman, Trustees of the Heilman Family Trust dated June 13, 1995, 3.333 acre tract as deeded and described in Official Record 825, Page 868 of the Logan County Records of Deeds and being more particularly described as follows:

Commencing on a 1 inch iron pipe found in a monument box on the center-line of County Highway 55 at center-line Station 55 + 45 (Logan County Engineer's survey monument record).

THENCE, with the center-line of County Highway 55 (60 feet wide), N 5°-03'-45"E, a distance of 1574.59 feet to a railroad spike found.

THENCE, with the lines of the Eric Musser 6.000 acre tract (O.R. 472, Pg. 717), the following three courses:

S 84°-56'-14"E, a distance of 248.71 feet to a 5/8 inch iron rod found, passing a 5/8 inch iron rod found at 30.00 feet.

S 5°-03'-46"W, a distance of 183.08 feet to a 5/8 inch iron rod found.

S 84°-50'-15"E, a distance of 286.87 feet to a 5/8 inch iron rod set at the TRUE POINT OF BEGINNING.

THENCE, with the south line of the said 6.000 acre tract, S 84°-50'-15"E, a distance of 124.19 feet to a 5/8 inch iron rod found.

THENCE, with a west line of the Harold Heilman and Patricia Heilman, Trustees of the Heilman Family Trust dated June 13, 1995, 35.147 acre tract (O.R. 298, Pg. 193), S 5°-05'-51"W, a distance of 68.54 feet to a 5/8 inch iron rod set.

THENCE, N 85°-30'-30"W, a distance of 125.65 feet to a 5/8 inch iron rod set.

THENCE, N 6°-17'-22"E, a distance of 70.04 feet to the point of beginning.

Containing 0.199 acre.

The basis for bearings is the center-line of County Highway 55 at survey Station 55 + 45, being N 5°-03'-45"E, and all other bearings are from angles and distances measured in a field survey by Lee Surveying and Mapping Co., Inc. on July 6, 2007.

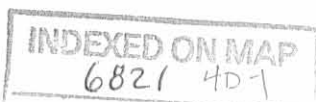


ORIGINAL STAMP IN GREEN

Description prepared by:

William K. Bruce  
Professional Surveyor 7437  
July 9, 2007

0980067

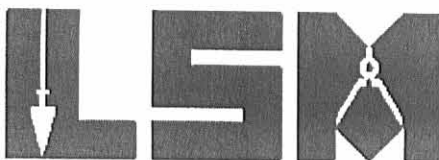


REV'D 7-11-07 S.M.J. OK

# Lee Surveying and Mapping Co., Inc.

Land Surveys • Topography • Subdivisions • Construction Layout

117 N. Madriver St.  
Bellefontaine OH 43311



Phone: (937) 593-7335  
Fax: (937) 593-7444

## HEILMAN 3.802 ACRES

Lying in Virginia Military Survey 3220, Jefferson Township, Logan County, Ohio.

Being out of the Harold Heilman and Patricia Heilman, Trustees of the Heilman Family Trust dated June 13, 1995, 35.147 acre tract as deeded and described in Official Record 298, Page 193 of the Logan County Records of Deeds and being more particularly described as follows:

Commencing on a 1 inch iron pipe found in a monument box on the center-line of County Highway 55 at center-line Station 55 + 45 (Logan County Engineer's survey monument card).

THENCE, with the center-line of County Highway 55 (60 feet wide), N 5°-03'-45"E, a distance of 1574.59 feet to a railroad spike found.

THENCE, with the lines of the Eric Musser 6.000 acre tract (O.R. 472, Pg. 717), the following three courses:

S 84°-56'-14"E, a distance of 248.71 feet to a 5/8 inch iron rod found, passing a 5/8 inch iron rod found at 30.00 feet.

S 5°-03'-46"W, a distance of 183.08 feet to a 5/8 inch iron rod found.

S 84°-50'-15"E, a distance of 411.06 feet to a 5/8 inch iron rod found at the TRUE POINT OF BEGINNING.

THENCE, with the lines of the said 6.000 acre tract, the following two courses:

S 84°-50'-15"E, a distance of 336.47 feet to a 5/8 inch iron rod set.

N 5°-03'-34"E, a distance of 436.98 feet to a 5/8 inch iron rod found.

THENCE, with the south line of the Dale Joshua Lovett 60 acre tract (O.R. 649, Pg. 301), S 85°-30'-34"E, a distance of 287.50 feet to a 5/8 inch iron rod set.

THENCE, S 5°-03'-34"W, a distance of 500.85 feet to a 5/8 inch iron rod set.

THENCE, N 84°-49'-44"W, a distance of 295.75 feet to a 5/8 inch iron rod set.

THENCE, N 88°-33'-53"W, a distance of 66.87 feet to a 5/8 inch iron rod set.

THENCE, N 85°-39'-26"W, a distance of 261.54 feet to a 5/8 inch iron rod set.

THENCE, with the east line of the Harold N. Heilman and Patricia M. Heilman, Trustees of the Heilman Family Trust dated June 13, 1995, 3.333 acre tract (O.R. 825, Pg. 868), N 5°-05'-51"E, a distance of 68.54 feet to the point of beginning.

Containing 3.802 acres.

The basis for bearings is the center-line of County Highway 55 at survey Station 55 + 45, being N 5°-03'-45"E, and all other bearings are from angles and distances measured in a field survey by Lee Surveying and Mapping Co., Inc. on July 6, 2007.

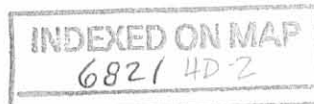


ORIGINAL STAMP IN GREEN

Description prepared by:

*William K. Bruce*

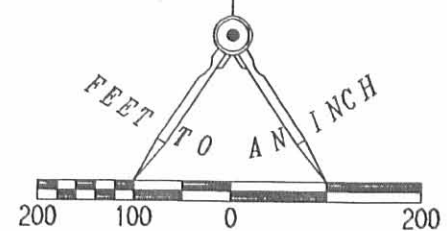
William K. Bruce  
Professional Surveyor 7437  
July 9, 2007



0980067

REC'D 7-11-07 SWM OK

SCALE  
200



DALE JOSHUA LOVETT  
60 ACRES  
O.R. 649, PG. 301

BRIAN M. NORRIS  
0.691 ACRE  
O.R. 472, PG. 715

BRIAN M. NORRIS  
2.125 ACRES  
O.R. 320, PG. 95

ERIC MUSSER  
6.000 ACRES  
O.R. 472, PG. 717

0.199 ACRE

HAROLD HEILMAN AND  
PATRICIA HEILMAN, TRUSTEES OF  
THE HEILMAN FAMILY TRUST,  
DATED JUNE 13, 1995  
35.147 ACRES  
O.R. 298, PG. 193

HAROLD N. HEILMAN AND  
PATRICIA M. HEILMAN, TRUSTEES OF  
THE HEILMAN FAMILY TRUST,  
DATED JUNE 13, 1995  
3.333 ACRES  
O.R. 825, PG. 868

**SURVEY OF 3.802 ACRES OUT OF  
THE HAROLD HEILMAN AND  
PATRICIA HEILMAN, TRUSTEES OF  
THE HEILMAN FAMILY TRUST,  
DATED JUNE 13, 1995  
35.147 ACRE TRACT  
OFFICIAL RECORD 298, PAGE 193  
AND 0.199 ACRE OUT OF THE  
HAROLD N. HEILMAN AND  
PATRICIA M. HEILMAN, TRUSTEES OF  
THE HEILMAN FAMILY TRUST,  
DATED JUNE 13, 1995  
3.333 ACRE TRACT  
OFFICIAL RECORD 825, PAGE 868  
VIRGINIA MILITARY SURVEY 3220  
JEFFERSON TOWNSHIP  
LOGAN COUNTY, OHIO**

SURVEYED BY:

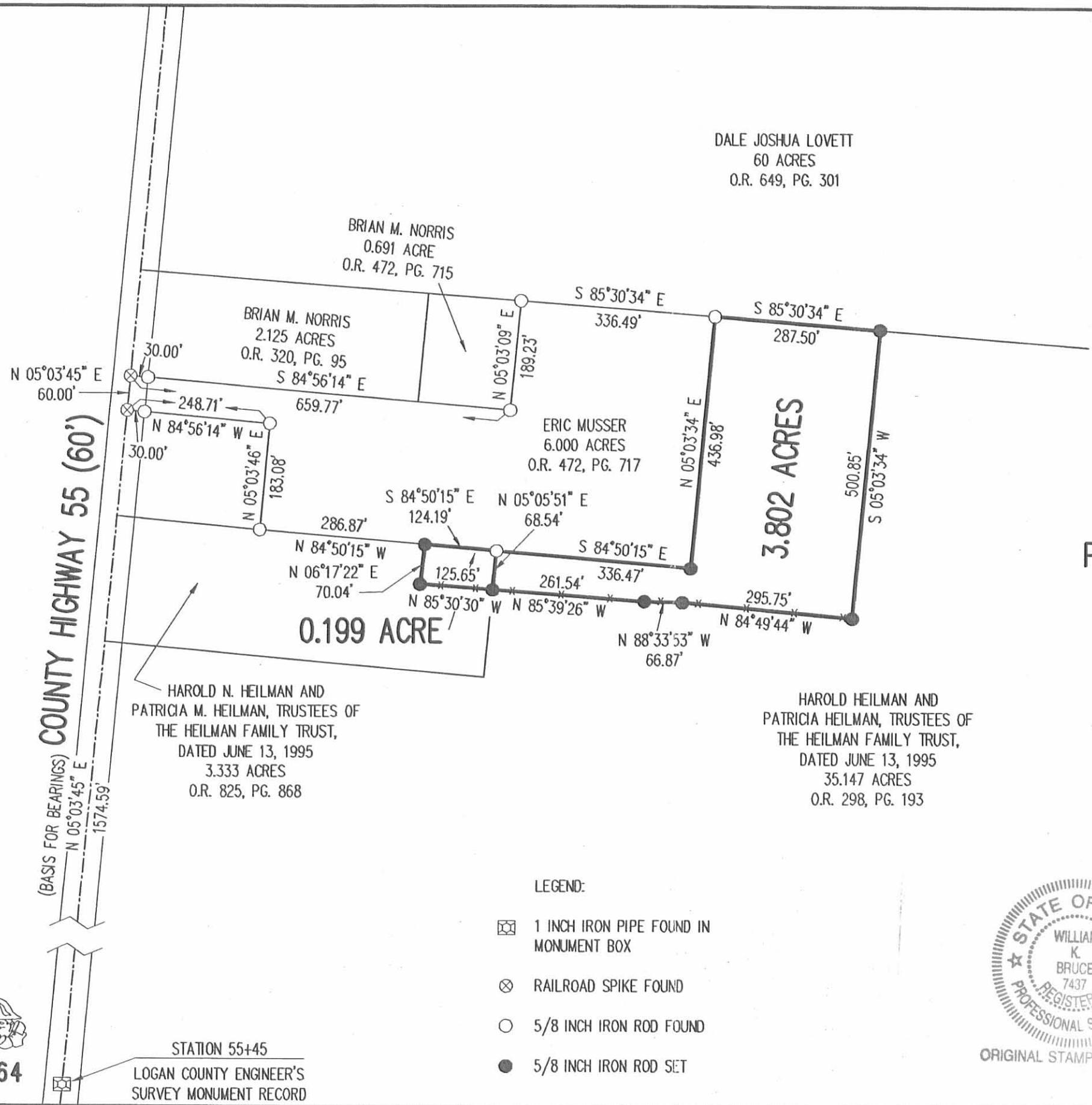
*William K. Bruce*

WILLIAM K. BRUCE  
PROFESSIONAL SURVEYOR 7437  
JULY 6, 2007



ORIGINAL STAMP IN GREEN

COPYRIGHT 2007 BY:  
**LEE SURVEYING & MAPPING CO., INC.**  
117 North Madriver Street  
BELLEFONTAINE, OHIO 43311  
(937) 593-7335  
surveys@lsmcinc.us  
KSS D0707 0980067 L-980-3



LEGEND:

- ☒ 1 INCH IRON PIPE FOUND IN MONUMENT BOX
- ⊗ RAILROAD SPIKE FOUND
- 5/8 INCH IRON ROD FOUND
- 5/8 INCH IRON ROD SET

2 WORKING DAYS  
**BEFORE YOU DIG**  
CALL TOLL FREE **800-362-2764**  
OHIO UTILITIES PROTECTION SERVICE.

STATION 55+45  
LOGAN COUNTY ENGINEER'S  
SURVEY MONUMENT RECORD

INDEXED ON MAP  
6821 4P

REC'D 3-6-97 SMJ OL ✓



# Lee Surveying and Mapping Co., Inc.



Farm Surveys • Lot Surveys • Topography • Subdivisions • Construction Layout

117 NORTH MADRIVER STREET  
BELLEFONTAINE, OHIO 43311

(937) 593-7335  
FAX (937) 593-7444

## HEILMAN 2.125 ACRES

Lying in Virginia Military Survey 3220, Jefferson Township, Logan County, Ohio.

Being out of the Harold Heilman and Patricia Heilman, Trustees of the Heilman Family Trust original 35.147 acre tract as deeded and described in Official Record 298, Page 193 of the Logan County Records of Deeds and being more particularly described as follows:

Beginning at a railroad spike found on the center-line of County Highway 55 (60 feet wide) at the northeast corner of Belle View Estates Subdivision (Plat Cabinet A, Slide 677).

THENCE, with the center-line of County Highway 55, N 2°-00'-00" E, a distance of 9.60 feet to a railroad spike set at the TRUE POINT OF BEGINNING.

THENCE, with the center-line of County Highway 55, N 2°-00'-00" E, a distance of 182.65 feet to a railroad spike set.

THENCE, with the south line of the Robert J. Lovett, Jr. 60 acre tract (O.R. 39, Pg. 187), S 88°-34'-19" E, a distance of 500.02 feet to a 5/8 inch iron rod set.

THENCE, S 2°-00'-00" W, a distance of 187.64 feet to a 5/8 inch iron rod set.

THENCE, N 88°-00'-00" W, a distance of 500.00 feet to the point of beginning.

Containing 2.125 acres of which 0.126 acre is within the highway right-of-way.

The basis for bearings is the center-line of County Highway 55 being N 2°-00'-00" E, and all other bearings are from angles and distances measured in a field survey by Lee Surveying and Mapping Co., Inc. on March 6, 1997.

Description prepared by:

Jeffrey I. Lee  
Professional Surveyor 6359  
March 6, 1997



L 980

ORIGINAL STAMP IN GREEN

INDEXED ON MAP  
682 | 5D -1



REC'D 10-8-96 SJY OK ✓



# Lee Surveying and Mapping Co., Inc.



Farm Surveys • Lot Surveys • Topography • Subdivisions • Construction Layout

117 North Madriver Street  
Bellefontaine, Ohio 43311

Phone (937) 593-7335  
Fax (937) 593-7444

## HEILMAN 1.044 ACRES

Lying in Virginia Military Survey 3220, Jefferson Township, Logan County, Ohio.

Being out of the Harold Heilman and Patricia Heilman, Trustees of the Heilman Family Trust original 35.147 acre tract as deeded and described in Official Record 298, Page 193 of the Logan County Records of Deeds and being more particularly described as follows:

Beginning at a railroad spike found on the center-line of County Highway 55 (60 feet wide) at the northeast corner of Belle View Estates Subdivision (Plat Cabinet A, Slide 677).

THENCE, with the center-line of County Highway 55, S 2°-00'-00" W, a distance of 50.40 feet to a railroad spike set at the TRUE POINT OF BEGINNING.

THENCE, S 88°-00'-00" E, a distance of 248.71 feet to a 5/8 inch iron rod set.

THENCE, S 2°-00'-00" W, a distance of 183.08 feet to a 5/8 inch iron rod set.

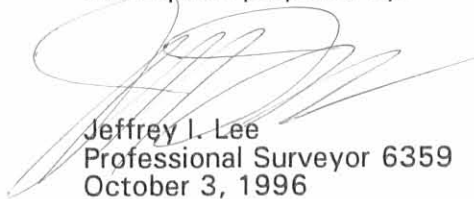
THENCE, with the north line of the Robert V. Hertenstein 3.333 acre tract (O.R. 288, Pg. 669), N 87°-54'-00" W, a distance of 248.71 feet to a railroad spike set.

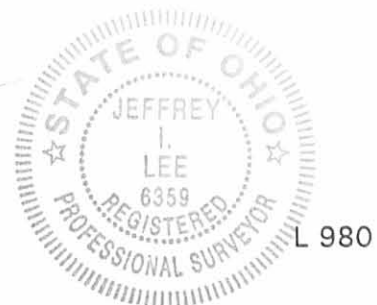
THENCE, with the center-line of County Highway 55, N 2°-00'-00" E, a distance of 182.65 feet to the point of beginning.

Containing 1.044 acres of which 0.126 acre is within the highway right-of-way.

The basis for bearings is the center-line of County Highway 55 being N 2°-00'-00" E, and all other bearings are from angles and distances measured in a field survey by Lee Surveying and Mapping Co., Inc. on September 23, 1996.

Description prepared by:

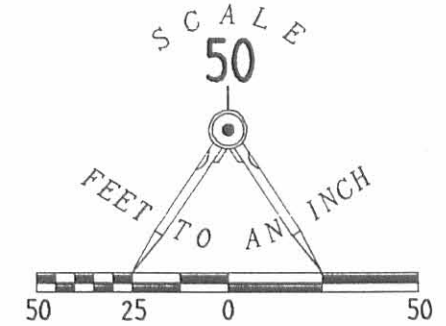
  
Jeffrey I. Lee  
Professional Surveyor 6359  
October 3, 1996



ORIGINAL STAMP IN GREEN

INDEXED ON MAP  
682 | 50-2

ROBERT J. LOVETT, JR.  
60 ACRES  
O.R. 39. PG. 187



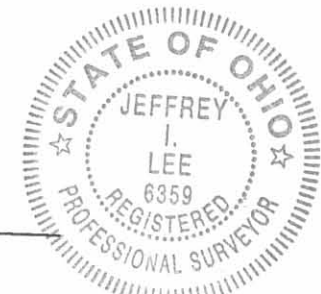
**2.125 ACRES**  
OF WHICH 0.126 ACRE IS WITHIN  
HIGHWAY RIGHT-OF-WAY

HAROLD & PATRICIA HEILMAN  
TRUSTEES OF THE HEILMAN FAMILY TRUST  
35.147 ACRES  
O.R. 298. PG. 193

**BOUNDARY SURVEY OF A 2.125 ACRE TRACT  
AND A 1.044 ACRE TRACT OUT OF THE  
HAROLD AND PATRICIA HEILMAN  
TRUSTEES OF THE HEILMAN FAMILY TRUST  
ORIGINAL 35.147 ACRES  
OFFICIAL RECORD 298. PAGE 193  
VIRGINIA MILITARY SURVEY 3220  
JEFFERSON TOWNSHIP  
LOGAN COUNTY, OHIO**

**LEGEND**

- 5/8" IRON ROD SET
- 5/8" IRON ROD FOUND
- ⊕ RAILROAD SPIKE SET
- ⊗ RAILROAD SPIKE FOUND
- ⊙ 1" IRON PIPE FOUND  
IN MONUMENT BOX



ORIGINAL STAMP IN GREEN

SURVEYED BY:

*Jeffrey I. Lee*  
JEFFREY I. LEE  
PROFESSIONAL SURVEYOR 6359  
SEPTEMBER 23, 1996  
REVISED MARCH 6, 1997

COPYRIGHT 1996 BY:  
**LEE SURVEYING & MAPPING CO., INC.**  
117 North Madriver Street  
BELLEFONTAINE, OHIO 43311  
(513) 593-7335

D 287 HEILMAN2

L-980-3

BELLE VIEW ESTATES SUBDIVISION  
PLAT CABINET A, SLIDE 677

LOT 1

COUNTY HIGHWAY 55 (60')

N 02°00'00"E  
182.65'

9.60'

50.40'

N 02°00'00"E  
182.65'

S 88°34'19"E  
500.02'

500.00'  
N 88°00'00"W

60.00'

S 88°00'00"E  
248.71'

**1.044 ACRES**  
OF WHICH 0.126 ACRE IS WITHIN  
HIGHWAY RIGHT-OF-WAY

248.71'  
N 87°54'00"W

183.08'  
S 02°00'00"W



2 WORKING DAYS

**BEFORE YOU DIG**



CALL TOLL FREE **800-362-2764**

OHIO UTILITIES PROTECTION SERVICE.

ROBERT V. HERTENSTEIN  
3.333 ACRES  
O.R. 288. PG. 669

INDEXED ON MAP  
6821 5P

Rec'd 5-13-96 OK yj-1

**LESLIE H. GEESLIN**

**REGISTERED SURVEYOR 5248**

**P. O. BOX 274**

**RUSHSVLVANIA, OHIO 43347**

**TELEPHONE: (513) 468-2793**

**KELLEY SURVEY**

May 14, 1996

The following described real estate situated in the State of Ohio, County of Logan, Township of Jefferson, being part of Virginia Military Survey 3220 and more particularly described as follows:

Beginning at a railroad spike found in the centerline of County Highway 55 at the northwest corner of Henry & Helen Kelley Electric Co.'s 1.198 acre tract as described in O. R. Vol. 13 Page 900.

Thence with said centerline N. 2° 00' 00" E. 220.00 feet to a cap and nail set.

Thence S. 87° 58' 04" E. 660.00 feet to a 5/8 inch iron bar set, passing a 5/8 inch iron bar set at 30.00 feet.

Thence S. 2° 00' 00" W. 220.00 feet to a 5/8 inch iron bar set.

Thence with the north line of Henry & Helen Kelley Electric Co.'s 0.322 acre tract as described in O. R. Vol. 91 Page 516, said Co.'s 1.198 acre tract and said north line projected N. 87° 58' 04" W. 660.00 feet to the place of beginning, passing 5/8 inch iron bars found at 41.12 feet, 172.76 feet and 630.00 feet.

Containing 3.333 acres more or less, of which 0.152 acre is in the right of way of C. H. 55.

The above described 3.333 acre tract being part of Henry Kelley's 40 acre tract as described in D. B. Vol. 353 Page 106.

Bearings are based on an assumed bearing ( N. 2° 00' 00" E. ) for the centerline of C. H. 55 in this field survey by Leslie H. Geeslin on May 14, 1996.



*Leslie H. Geeslin*

INDEX ON MAP  
6821 60

N

COUNTY HWY. 55  
(60')

N. 2°00'00" E.  
220.00'  
(0.152 A)

HENRY KELLEY  
40 AC.  
D.B. VOL. 353 PG. 106

S. 87° 58' 04" E. 660.00'

3.333 AC.

S. 2°00'00" W.

N. 87° 58' 04" W. 660.00'

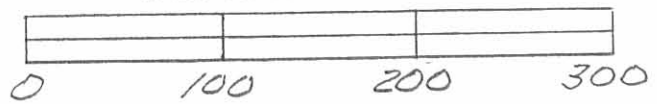
HENRY & HELEN KELLEY ELECTRIC CO., INC.  
1.198 AC.  
O.R. VOL. 13 PG 900

131.14  
0.322 AC.  
O.R. VOL. 91  
PG 516

LEGEND:

- = R.R. SPK. FOUND
- = CAP & NAIL SET
- = 5/8" IRON BAR FD
- = 5/8" IRON BAR SET

SURVEY OF 3.333 AC. TRACT  
IN T.M.S. 3220, JEFFERSON  
TOWNSHIP, LOGAN COUNTY,  
OHIO FOR HENRY KELLEY  
MAY 14, 1996  
SCALE: 1" = 100'



INDEX ON MAP  
6821 UP

*Leslie H. Geeslin*  
LESLIE H. GEESLIN  
RUSHSVLVANIA, OHIO  
PH 513 - 468 - 2793



Received 6-27-89

OK 6-28-89

# Lee Surveying and Mapping Co.



Farm Surveys • Lot Surveys • Topography • Subdivisions • Construction Layout

855 EAST SANDUSKY AVENUE  
BELLEFONTAINE, OHIO 43311

(513) 593-5780

CLAYTON M. LEE, P.S.  
JEFFREY I. LEE, P.S.

H. & H. KELLY ELECTRIC COMPANY (0.322 ACRE)

Lying in V.M.S. 3220, Jefferson Township, Logan County, Ohio.

Being out of that original 40 acre tract in the name of Henry Kelly as deeded and described in Volume 353, Page 106 of the Logan County Records of Deeds and being adjacent to, and adjoining on the east, that 1.198 acre tract in the name of H. & H. Kelly Electric Company (O.R. 13, Page 900) and being more particularly described as follows:

Beginning at a 5/8" iron rod found marking the southeast corner of the said 1.198 acre tract and being on the north line of the Heilman 32.56 acres (Volume 370, Page 126).

THENCE, with the east line of the said 1.198 acre tract, N 2°-00' E, a distance of 107.00 feet to a 5/8" iron rod found at the northeast corner of said 1.198 acre tract.

THENCE, with the north line, extended easterly of said 1.198 acres, S 87°-58' E, a distance of 131.14 feet to a 5/8" iron rod (set).

THENCE, S 2°-00' W, a distance of 107.00 feet to a 5/8" iron rod set on the north line of aforesaid Heilman land.

THENCE, with said north line, N 87°-58' W, a distance of 131.14 feet to the point of beginning.

Containing 0.322 acre.

This description prepared from an actual field survey.

Basis for bearings: Center-line of County Highway 55 = N 2°-00' E.

Prepared by:

*Clayton M. Lee*

Clayton M. Lee

Registered Professional Surveyor No. 6181

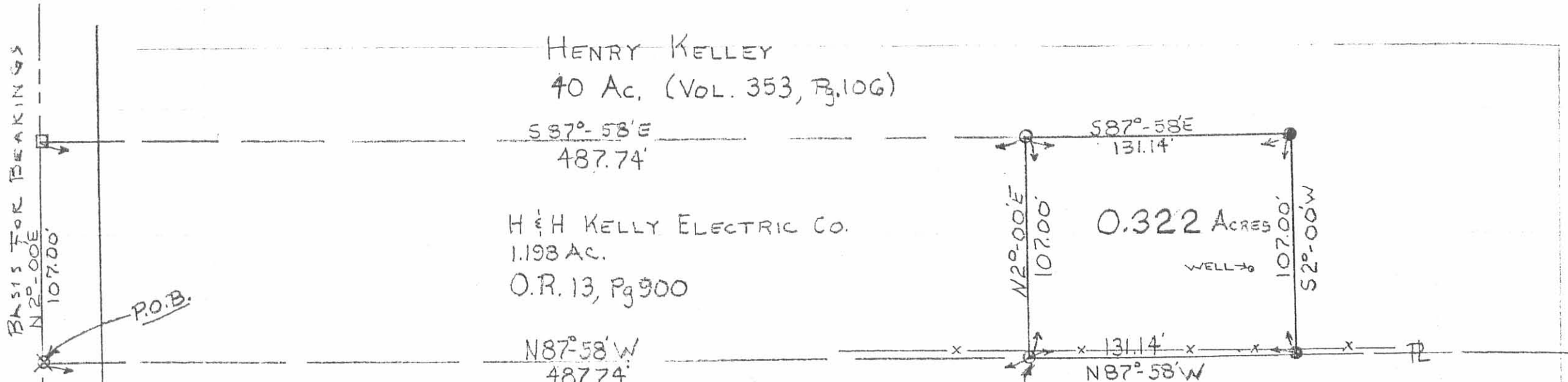
June 26, 1989



STAMP IN GREEN

L-980

INDEXED ON MAP  
682/40



BASIS FOR BEARINGS

$N 2^{\circ} - 00' E$   
107.00'

P.O.B.

Co. HWY. 55

LEGEND

- - 5/8" IRON ROD SET
- - 5/8" IRON ROD FND
- ⊗ - 3/4" IRON ROD FND
- - R.R. SPIKE FND

HENRY KELLEY  
40 Ac. (VOL. 353, Pg. 106)

$S 87^{\circ} - 58' E$   
487.74'

H & H KELLY ELECTRIC CO.  
1.193 AC.  
O.R. 13, Pg 900

$S 87^{\circ} - 58' E$   
131.14'

0.322 ACRES

WELL →

$N 2^{\circ} - 00' E$   
107.00'

107.00'  
 $S 2^{\circ} - 00' W$

$N 87^{\circ} - 58' W$   
487.74'

$N 87^{\circ} - 58' W$

P.O.B.

HAROLD HEILMAN  
32.56 Ac.  
VOL. 370, Pg 126

SURVEY OF 0.322 ACRES OUT OF THE ORIGINAL  
HENRY KELLEY 40 ACRE TRACT (VOL. 353, Pg. 106)  
V.M.S. 3220, JEFFERSON TWP, LOGAN COUNTY, OHIO

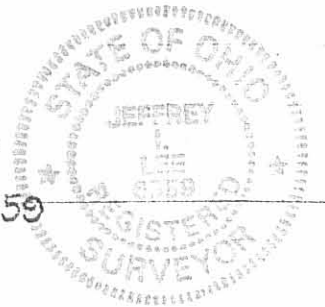


SCALE 1" = 60'

BEARINGS BASIS  
PREV. SURVEY OF GRANTOR'S  
PROPERTY (VOL. 353, Pg. 106)  
 $N 87^{\circ} - 58' W$  (S. PL)

By: *Jeffrey L. Lee*

JEFFREY L. LEE  
REG. PROF. SURVEYOR 6359  
MAY 18, 1989



ORIGINAL STAMP IN GREEN

INDEXED ON MAP  
6821 TP

Lee Surveying & Mapping Co.  
855 E. Sandusky Ave.  
BELLEFONTAINE, OHIO 43311  
(513) 593-5780