

# Lee Surveying and Mapping Co.



Farm Surveys • Lot Surveys • Topography • Subdivisions • Construction Layout

855 EAST SANDUSKY AVENUE  
BELLEFONTAINE, OHIO 43311

(513) 593-5780

CLAYTON M. LEE, P.S.  
JEFFREY I. LEE, P.S.

## GARROTT SURVEY

Lying in V.M.S. 4948-9423-9~~8~~<sup>8</sup>76 and V.M.S. 11076, Jefferson Township, Logan County, Ohio.

Being off the east side of that 15.5 acres in the name of W. Riley Garrott as deeded and described in Volume 387, Page 915 of the Logan County Records of Deeds and being more particularly described as follows:

Beginning at a railroad spike set on the center-line of County Road 10, marking the northeast corner of said grantor's 15.5 acres and being Station 192+33.22 of the Logan County Engineer's survey of County Road 10.

THENCE, with the east line of said 15.5 acres tract, the same being the west line of Graham's 6.00 acre tract (Volume 399, Page 641), S 22°-53'-30" E, a distance of 1131.81 feet to a 5/8" iron rod at the southeast corner of said 15.5 acre tract.

THENCE, with the south line of said 15.5 acres, S 19°-53'-30" W, a distance of 240.70 feet to a 5/8" iron rod.

THENCE, N 25°-38'-30" W, a distance of 1269.92 feet to a railroad spike set on the center-line of County Road 10.

THENCE, with said center-line, N 57°-00' E, a distance of 227.96 feet to the point of beginning.

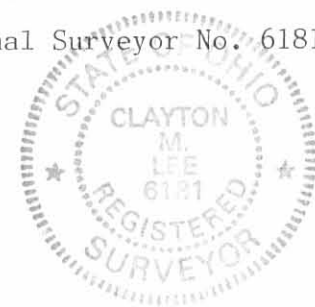
Containing 5.420 acres, of which 4.375 acres are in V.M.S. 4948-9423-9~~8~~<sup>8</sup>76 and 1.045 acres are in V.M.S. 11076.

Prepared by:

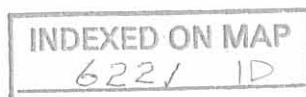
*Clayton M. Lee*

Clayton M. Lee  
Registered Professional Surveyor No. 6181  
October 21, 1986

This description prepared from an actual field survey.



ORIGINAL STAMP IN GREEN





# Lee Surveying and Mapping Co.



Farm Surveys • Lot Surveys • Topography • Subdivisions • Construction Layout

855 EAST SANDUSKY AVENUE  
BELLEFONTAINE, OHIO 43311

(513) 593-5780

CLAYTON M. LEE, P.S.  
JEFFREY I. LEE, P.S.

Lying in V.M.S. 4948, Jefferson Township, Logan county, Ohio.

Being off the west side of that 18.695 acre tract in the name of Morris as deeded and described in Volume 356, Page 391 of the Logan County Records of Deeds and being more particularly described as follows:

Beginning at a boat spike found on the center-line of County Road 10, marking the northwest corner of said 18.695 acres and being Road Station 188+00 of the Logan County Engineers Records.

THENCE, with the center-line of County Road 10, the following 5 bearings and distances:

- N 57°-00' E, a distance of 100.18 feet to a 'PK' nail (found).
- N 60°-25'-15" E, a distance of 99.86 feet to a 'PK' nail (found).
- N 65°-10' E, a distance of 99.82 feet to a 'PK' nail (found).
- N 72°-45'-55" E, a distance of 100.16 feet to a 'PK' nail (found).
- N 76°-25'-36" E, a distance of 393.16 feet to a railroad spike (set).

THENCE, through said 18.695 acre tract, S 12°-27'-38" W, a distance of 696.97 feet to a 5/8" iron rod set on the south line of said 18.695 acre tract.

THENCE, with said south line, S 83°-05'-30" W, a distance of 397.30 feet to a 5/8" iron rod set on the southwest corner of said 18.695 acres.

THENCE, with said west line, N 22°-53'-30" W, a distance of 500.00 feet to the point of beginning.

Containing 8.00 acres.

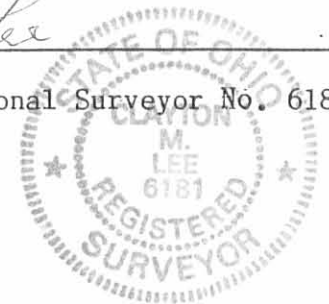
This description prepared from an actual field survey.

Basis for bearings: Center-line of County Road 10 = N 57°-00' E.

Prepared by:

*Clayton M. Lee*

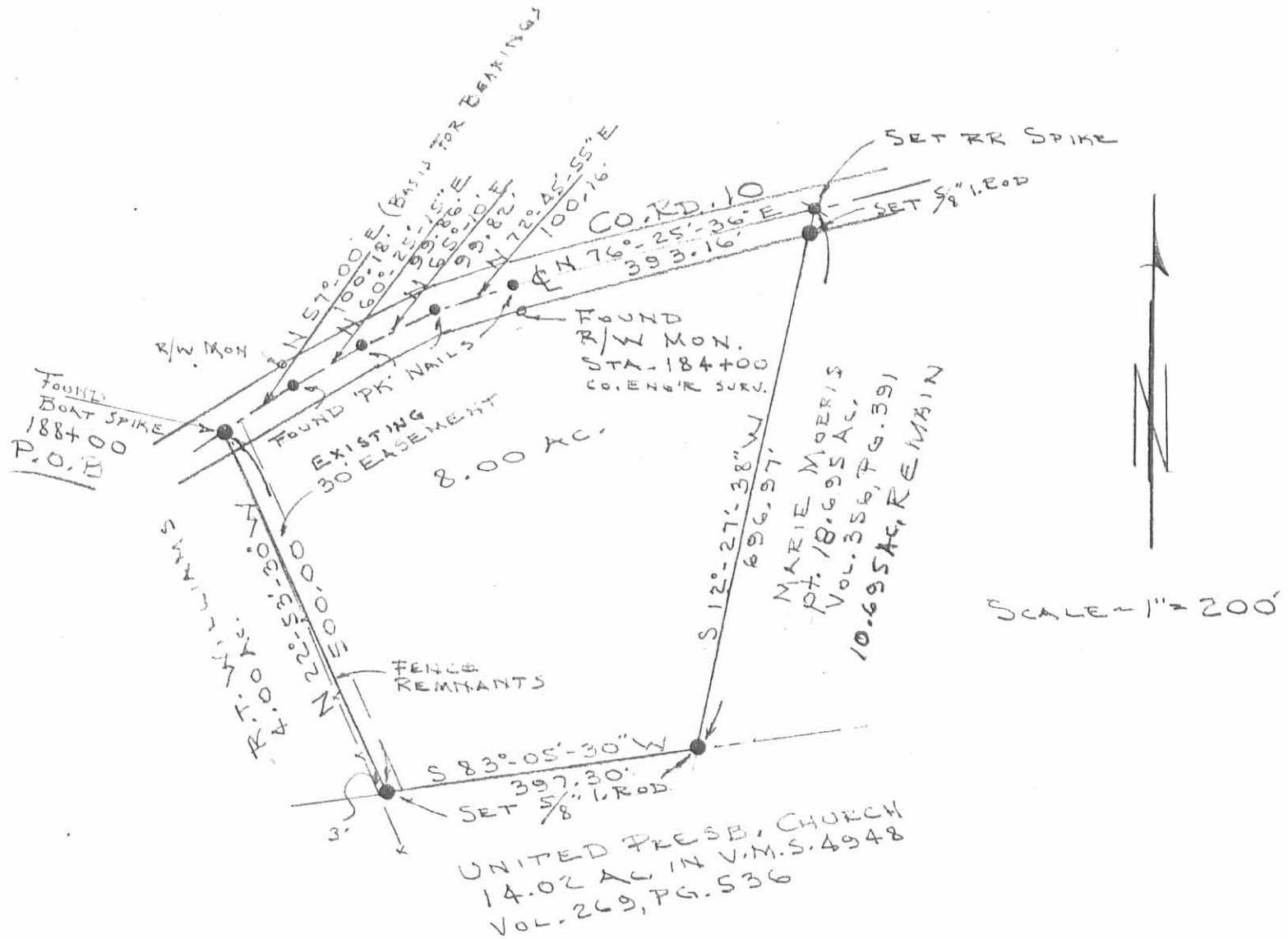
Clayton M. Lee  
Registered Professional Surveyor No. 6181  
November 1, 1988



ORIGINAL STAMP IN GREEN

INDEXED ON MAP  
622/2D

L-1689



SCALE = 1" = 200'

SURVEY OF 8.00 ACRES OUT OF THE  
 MORRIS 10.695 ACRE TRACT  
 V.M.S. 4948  
 JEFFERSON TWP,  
 LOGAN COUNTY, OHIO

INDEXED ON MAP  
 622/2P

By: *Jeffrey I. Lee*  
 JEFFREY I. LEE  
 REG. SURVEYOR 6359  
 OCT. 31, 1988  
 STATE OF OHIO  
 JEFFREY I. LEE  
 6359  
 REGISTERED  
 SURVEYOR  
 ORIGINAL STAMP IN GREEN

# Lee Surveying and Mapping Co.



Farm Surveys • Lot Surveys • Topography • Subdivisions • Construction Layout

855 EAST SANDUSKY AVENUE  
BELLEFONTAINE, OHIO 43311

(513) 593-5780

CLAYTON M. LEE, P.S.  
JEFFREY I. LEE, P.S.

## JAMES HAMMOND SURVEY

Lying in combined V.M.S. (4948-9423-9876) and V.M.S. 11076, Jefferson Township, Logan County, Ohio and being out of those lands deeded and described in Volume 356, Page 334, tract 1 and 2 and encompassing all of that 2.5 acres (tract 2) and better described as follows:

Beginning at an iron spike set in the center-line of County Highway No. 10 at the northeast corner of said 2.5 acres, the same being the northwest corner of an 18.695 acre tract (Volume 356, Page 391) and designated in county highway records as being Station 185+99.87.

THENCE, with the east line of grantor's land and the west line of the said 18.695 acre tract and the west line of the United Presbyterian land (Volume 269, Page 536), S 22°-53'-30" E, a distance of 1014.02 feet to an iron rod set in a fence corner at the southeast corner of grantor's 15 acre tract (tract 1), on the north line of V.M.S. 11076, passing an iron rod set in the road right-of-way line at 30.47 feet.

THENCE, with the grantor's south line, S 63°-25'-44" W, a distance of 263.18 feet to an angle in said south line.

THENCE, continuing with south line and crossing into V.M.S. 11076, S 19°-53'-30" W, a distance of 241.05 feet to an iron rod.

THENCE, parallel to the east line, N 22°-53'-30" W, a distance of 1131.81 feet to an iron spike set in the center-line of County Highway 10, passing an iron rod set in the right-of-way line at 1101.34 feet.

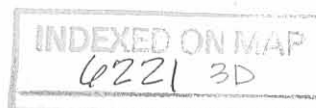
THENCE, with said center-line, N 57°-00' W, a distance of 433.09 feet to the point of beginning. Containing 10.00 acres, of which 9.723 acres lie in V.M.S. (4948-9423-9876) and 0.277 acre lies in V.M.S. 11076 and leaving all of that 8 acre tract (tract 3) and leaving 7.5 acres in the 15 acre tract (tract 1) and leaving none of 2.5 acres (tract 2).

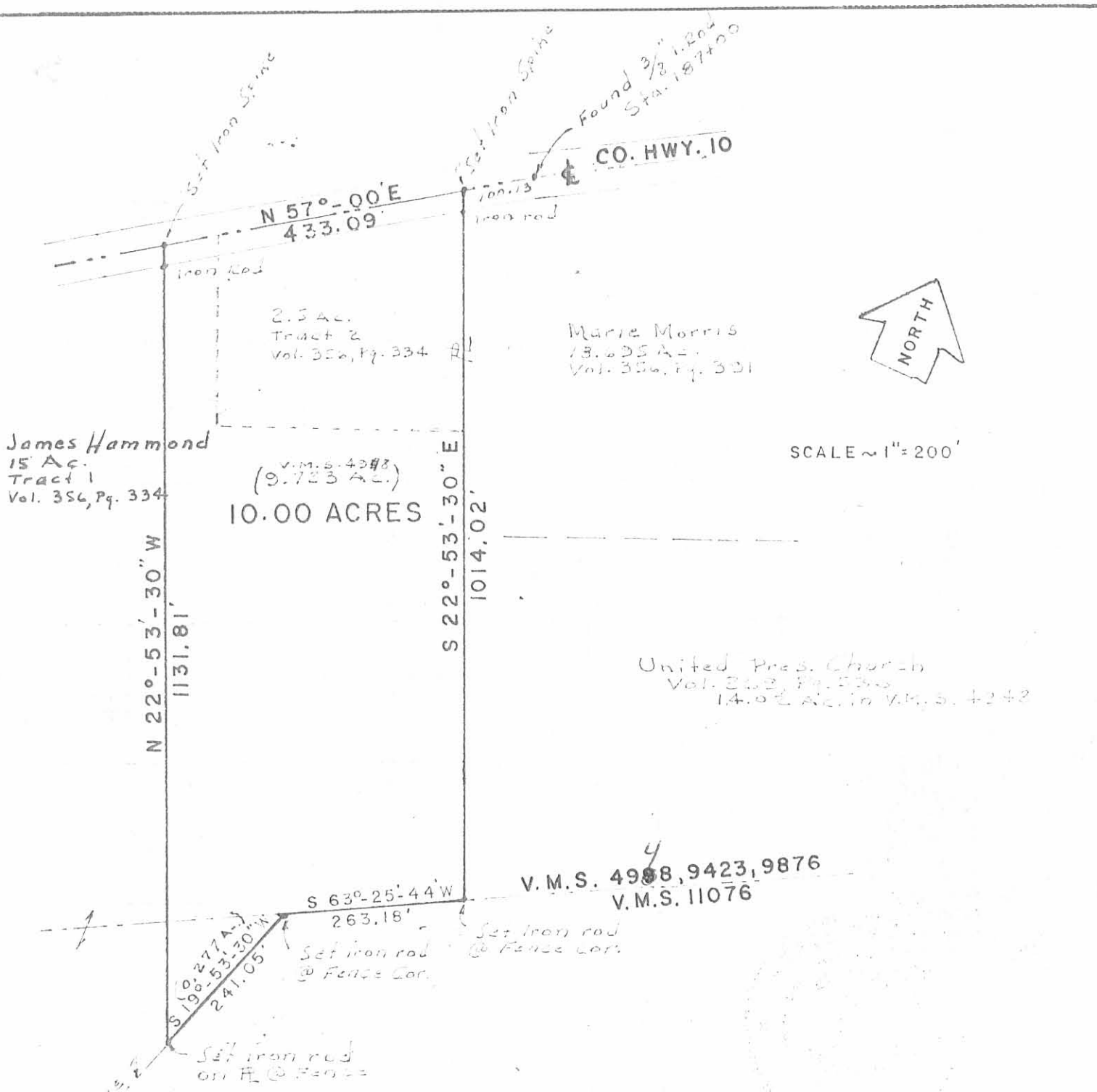
Last previous deed reference: Volume 356, Page 334.

Surveyed by:

*Clayton M. Lee*

Clayton M. Lee  
Reg. Surveyor No. 6181  
8-21-78





James Hammond  
15 Ac.  
Tract 1  
Vol. 356, Pg. 334

2.5 Ac.  
Tract 2  
Vol. 356, Pg. 334

Marie Morris  
13.625 Ac.  
Vol. 356, Pg. 331

V.M.S. 4348  
(9.723 Ac.)  
10.00 ACRES

SCALE ~ 1" = 200'

United Pres. Church  
Vol. 353, Pg. 530  
14.02 Ac. in V.M.S. 4242

V.M.S. 4988, 9423, 9876  
V.M.S. 11076

**SURVEY OF 10.00 ACRES OUT OF THE JAMES HAMMOND  
LANDS (Vol. 356, Pg. 334) V.M.S. (4988, 9423, 9876) & 11076  
JEFFERSON TOWNSHIP, LOGAN COUNTY, OHIO**

6221 3P

Surveyed by:  
*Clayton M. Lee*  
Clayton M. Lee

INDEXED ON MAP

Reg. Surveyor 6181

8-21-78



**Lee Surveying & Mapping Co.**  
855 E. Sandusky Ave.  
BELLEFONTAINE, OHIO 43311  
(513) 593-5780

# Lee Surveying and Mapping Co.



Farm Surveys • Lot Surveys • Topography • Subdivisions • Construction Layout

855 EAST SANDUSKY AVENUE  
BELLEFONTAINE, OHIO 43311

(513) 593-5780

CLAYTON M. LEE, P.S.  
JEFFREY I. LEE, P.S.

## WYATT SURVEY

Lying in V.M.S. 4948-9423-9876, Jefferson Township, Logan County, Ohio.

Being the east part of that 10 acres lying in the name of Wade Wyatt and deeded and described in Volume 383, Page 719 of the Logan County Records of Deeds and more particularly described as follows:

Beginning at an iron spike found on the center-line of County Highway 10 marking the northeast corner of grantor's 10 acre tract and also being the northwest corner of an 18.695 acre tract (Volume 356, Page 391).

THENCE, with the east line of said 10 acres, S 22°-53'-30" E, a distance of 1014.02 feet to an iron rod found at the southeast corner of said 10 acres on the north line of V.M.S. 11076.

THENCE, with said north line, S 63°-25'-44" W, a distance of 173.88 feet to an iron rod.

THENCE, parallel to the east line, N 22°-53'-30" W, a distance of 994.24 feet to a railroad spike set on the center-line of County Highway 10.

THENCE, with said center-line of County Highway 10, N 57°-00' E, a distance of 176.26 feet to the point of beginning. Containing 4.00 acres.

Last previous deed reference: Volume 383, Page 719.

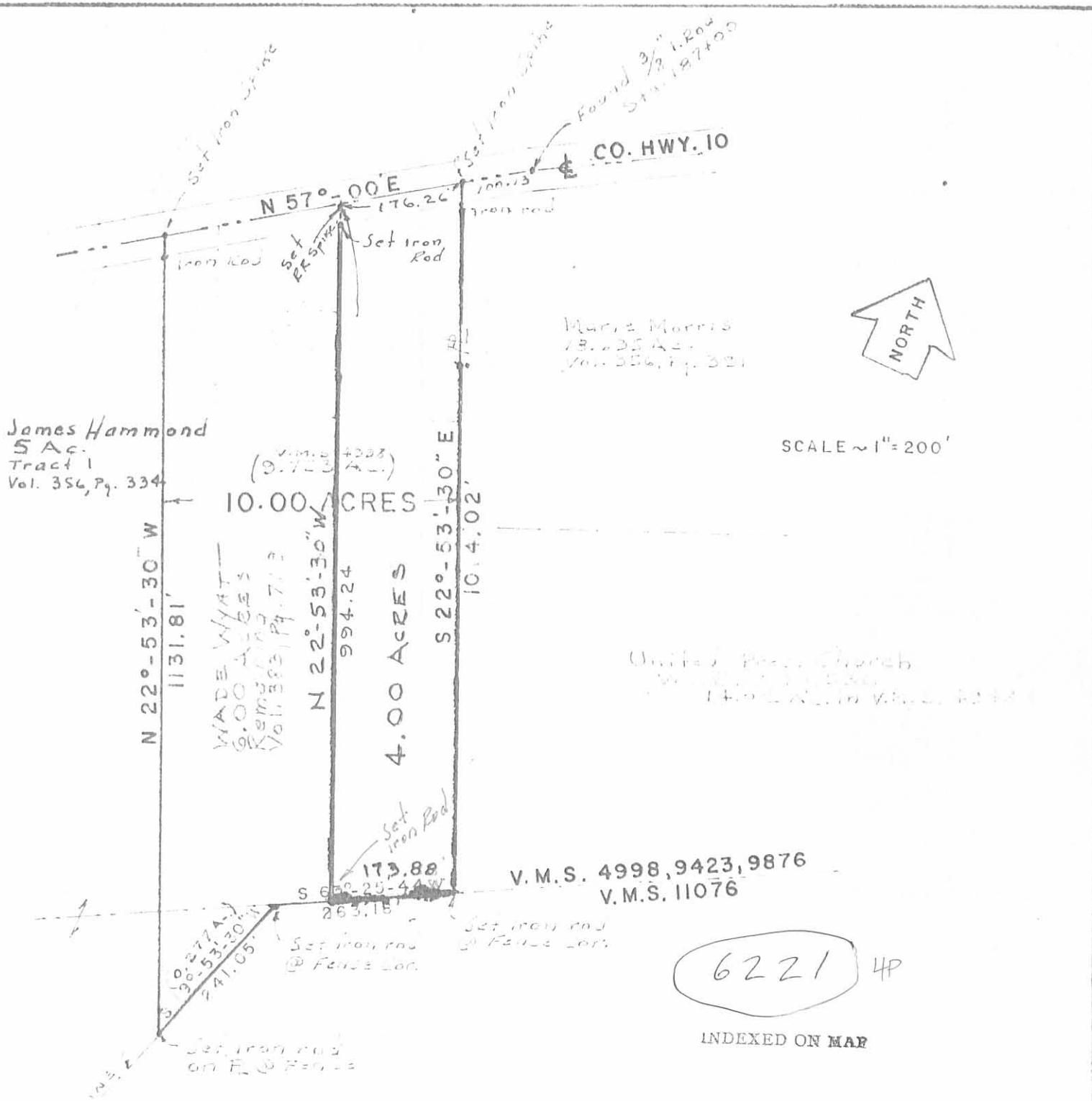
Surveyed by:

*Clayton M. Lee*

Clayton M. Lee  
Reg. Surveyor No. 6181  
9-23-80



INDEXED ON MAP  
6221 4D



**SURVEY OF 4.00 ACRES OUT OF THE WADE H. WYATT  
 LANDS (Vol. 383, Pg. 719) V.M.S. (4998, 9423, 9876)  
 JEFFERSON TOWNSHIP, LOGAN COUNTY, OHIO**

Surveyed by:  
*Clayton M. Lee*  
 Clayton M. Lee  
 Reg. Surveyor 6181  
 7-25-80



**Lee Surveying & Mapping Co.**  
 855 E. Sandusky Ave.  
 BELLEFONTAINE, OHIO 43311  
 (513) 593-5780