

Stickred Survey Description  
November, 1974

Being situated in Jefferson Township, Logan County, Ohio; and being a part of V.M.S. #3139.

Beginning at a point in the center of County Road 25, that is the northwest corner of Anderson's 26.66 acre tract.

Thence with the center of County Road 25 N  $35^{\circ} - 30'W$  300.0 feet to a point.

Thence N  $64^{\circ} - 50'E$  1135.0 feet to a iron.

Thence N  $82^{\circ} - 50'E$  315.0 feet to a iron.

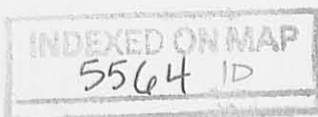
Thence S  $11^{\circ} - 38'E$  615.0 feet to a iron in the north line of Anderson's 26.66 acre tract.

Thence with the north line of Anderson's 26.66 acre tract S  $82^{\circ} - 46'W$  1300.0 feet to the place of beginning.

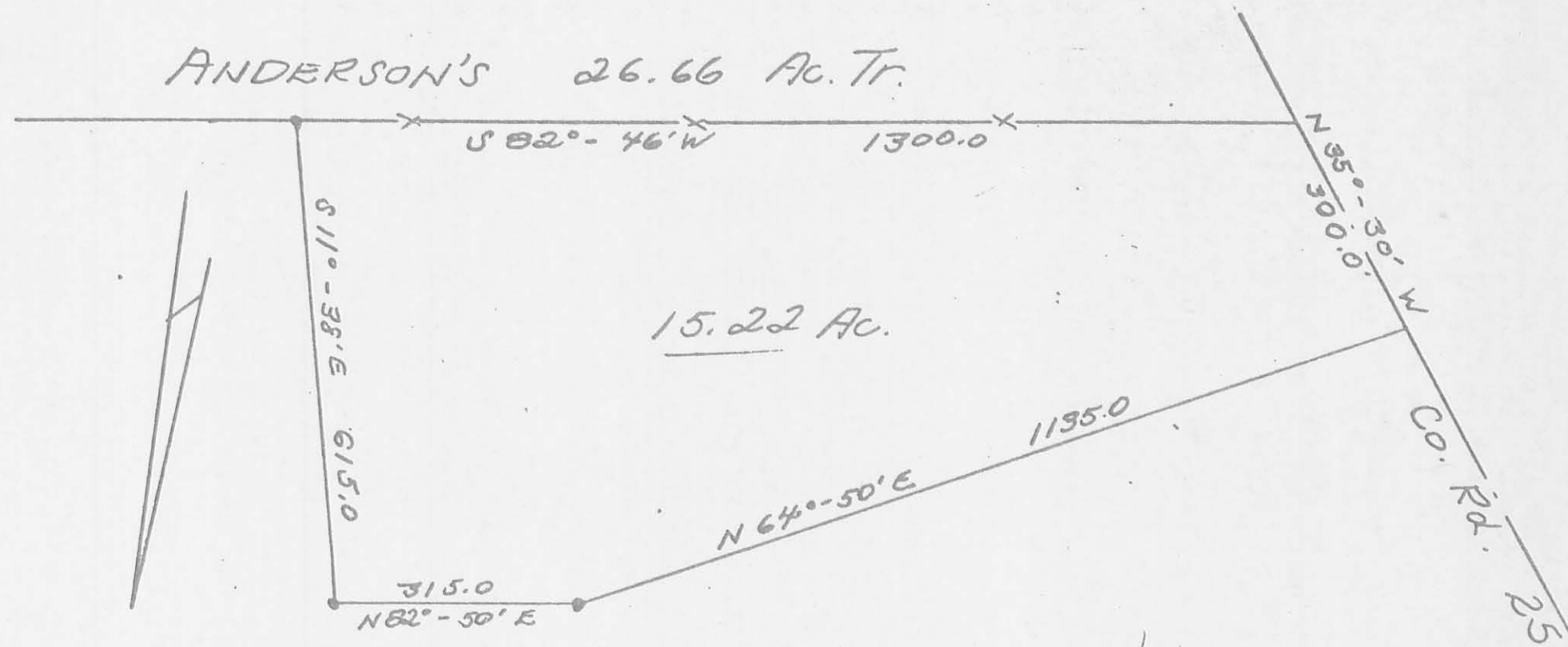
Containing 15.22 acres more or less. Being surveyed from a 73.44 acre tract.



Owen K. Shirk  
Surveyor 4271



STICKROD SURVEY  
JEFFERSON TWP., LOGAN CO., OHIO  
V.M.S. 3139 - 1" = 200'



*Owen K. Stirk*  
Owen K. Stirk  
Surveyor 4271  
Nov. 9, 1974

INDEXED ON MAP  
5564 1P



# Lee Surveying and Mapping Co.



Farm Surveys • Lot Surveys • Topography • Subdivisions • Construction Layout

143 EAST COLUMBUS AVENUE  
BELLEFONTAINE, OHIO 43311

(513) 593-7335

JEFFREY I. LEE, P.S.

WALTER LAMB, JR. (175.024 ACRES)

Lying in V.M.S. 3139, Jefferson Township, Logan County, Ohio.

Being all of that acreage (180.57 by deed) in the names of Walter L. Lamb, Jr. and Vicki L. Lamb as deeded and described in Official Record 62, Page 522 of the Logan County Records of Deeds and being more particularly described as follows:

Beginning at a 3/4 inch iron rod set on the north line of V.M.S. 3139 on the easterly right-of-way of County Highway 25 and the south line of the Margaret Baker 0.60 acre tract (Vol. 394, Pg. 294).

THENCE, with the north line of V.M.S. 3139 and the south lines of the said 0.60 acre tract, the Margaret Baker 0.92 acre tract (Vol. 394, Pg. 294), and the south line of the Miriam Clark 78.478 acre tract (O.R. 64, Pg. 166), N 78°-19'-58" E, a distance of 2130.42 feet to a stone found.

THENCE, with the south line of the Robert Notestine 14.73 acre tract (Vol. 328, Pg. 286), N 80°-53'-30" E, a distance of 635.88 feet to a 3/4 inch iron rod set.

THENCE, with the westerly lines of the Harry Gilbert 109.8 acre tract (Vol. 204, Pg. 113) and the Donald Hone 51.69 acre tract (Vol. 340, Pg. 237), S 11°-46'-23" E, a distance of 1161.62 feet to a 5/8 inch iron rod found.

THENCE, with the westerly line of the Trell Yocum 107.085 acre tract (O.R. 7, Pg. 8), S 11°-46'-23" E, a distance of 2615.40 feet to a 3/4 inch iron rod set.

THENCE, with the Russell Anderson 26.66 acre tract (Vol. 295, Pg. 549), S 81°-34'-11" W, a distance of 454.96 feet to a 5/8 inch iron rod found.

THENCE, with the Russell Anderson 15.22 acre tract (Vol. 401, Pg. 936) the following three courses:

- 1.) N 12°-38'-54" W, a distance of 615.00 feet to a 3/4 inch iron rod set.
- 2.) S 81°-24'-32" W, a distance of 315.00 feet to a 3/4 inch iron rod set.
- 3.) S 63°-38'-11" W, a distance of 1108.17 feet to a 3/4 inch iron rod set on the easterly right-of-way of County Highway 25.

THENCE, with the right-of-way of County Highway 25 the following nine courses:

- 1.) N 37°-02'-48" W, a distance of 151.03 feet to a 3/4 inch iron rod set.
- 2.) A curve to the right having a central angle of 14°-37'-08", a radius of 691.20 feet, an arc distance of 176.36 feet with a chord having a bearing of N 29°-44'-14" W, and a chord distance of 175.88 feet to a 3/4 inch iron rod set.
- 3.) N 22°-25'-40" W, a distance of 608.92 feet to a 3/4 inch iron rod set.
- 4.) N 22°-26'-56" W, a distance of 1030.72 feet to a 3/4 inch iron rod set.
- 5.) N 22°-20'-19" W, a distance of 883.86 feet to a 3/4 inch iron rod set.
- 6.) A curve to the left having a central angle of 15°-07'-48", a radius of 741.20 feet, an arc distance of 195.73 feet with a chord having a bearing of N 29°-54'-13" W, and a chord distance of 195.16 feet to a 3/4 inch iron rod set.
- 7.) N 37°-28'-07" W, a distance of 268.12 feet to a 3/4 inch iron rod set.
- 8.) A curve to the left having a central angle of 12°-11'-20", a radius of 597.96 feet, an arc distance of 127.21 feet with a chord having a bearing of N 43°-33'-47" W, and a chord distance of 126.97 feet to a 3/4 inch iron rod set.
- 9.) N 49°-39'-27" W, a distance of 141.51 feet to the point of beginning.

Containing 175.024 acres.

The basis for bearings is based upon the north line of V.M.S. 3139 being N 78°-19'-58" E, and all other bearings are from angles and distances measured in a field survey completed by Lee Surveying and Mapping Company on July 10, 1991.



Description prepared by:

*Jeffrey I. Lee*  
Jeffrey I. Lee  
Professional Surveyor 6359  
July 11, 1991

