

C.H. No. 180
JEFFERSON TWP.

C.H. 180 - 30' wide

Deed Vol. 94, pg. 38

Deed Vol. 94, pg. 382

A = 1" ϕ Bar Set

B = R.R. 2pk. over Stone - found

Sta. 168+49 F.B. 614, pg. 25

C = 5/8" ϕ Bar Set - R

D = 5/8" ϕ Bar Set 15.0 feet North of
R fence

E = 5/8" ϕ Bar Set - R

LINE "DE" parallel to and 15.0 feet north
of property line fence

Split fences @ "D" & "A" for line
"ACD"

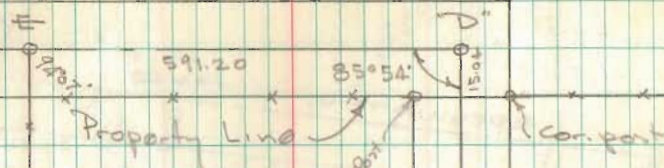
Existing fences @ 31' \pm

Dodson
Whitlow
Artis

10/7/67

60°

2

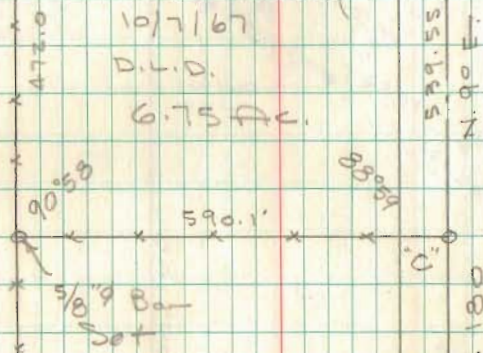


Coona Survey

10/7/67

D.L.D.

6.75 AC.



C.H. 180

65.17

725.65

INDEXED ON MAP

5558

C.H. 10

RR 2pk

Found

R

3.65'

"A"

"B"

Comp. part

Comp. part

