

ROYER SURVEY
October, 1973

TRACT 2

The following described real estate situated in Virginia Military Survey No.3442, Jefferson Township, Logan County, Ohio and being more particularly described as follows:

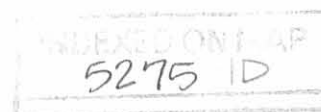
Beginning at an iron bar in the centerline of S.R.47 at the northeast corner of George H. Royer's 60.00 acre tract; thence with said centerline N.51°02'E. 150.0 feet to an iron bar; thence S.29°15.5'E. 216.75 feet to an iron bar in the north line of Ruth M. Bailey's 10.5 acre tract; thence with said Bailey's north line S.50°59.7'W. 258.0 feet to an iron bar in the east line of George H. Royer's 60.00 acre tract; thence with said Royer's east line N.4°54.4'W. 258.1 feet to the place of beginning.

Containing 1.00 acre more or less.

The above described 1.00 acre being on the west side of George H. Royer's 2.00 acre tract.

I hereby certify that the above is a true and accurate description of a survey made by me.

Leslie H. Geeslin
Reg.Surveyor 5248



S.R. 47 (60')

N 51° 02' E.

150.0'

182.09'

George H. Royer 60.00 AC

258.7'

N 4° 54.4' W.

1.00 AC.

TRACT 2

1.00 AC.

TRACT 1

S 27° 15.5' E. 216.75'
N 29° 15.5' W. 216.75'

S 50° 59.7' W. 258.0'

S 50° 59.7' W. 225.35'

RUTH M. BAILEY 10.50 AC

S 40° 46' E. 213.6'

⊙ = R.R. SPIRE
○ = 3/8" IRON BAR
⊙ = 3/4" IRON BAR
SCALE 1" = 50'

ROYER SURVEY
OCTOBER, 1973
V.M.S. 3442
JEFFERSON TOWNSHIP
LOGAN COUNTY, OHIO

5275 1P

INDEXED ON MAP

LESLIE H. GEESLIN
CIVIL ENGINEER 5248

Lee Surveying and Mapping Co., Inc.

Land Surveys • Topography • Subdivisions • Construction Layout

117 N. Madriver St.
Bellefontaine OH 43311



Phone: (937) 593-7335
Fax: (937) 593-7444
surveys@lsminc.us

MARKER 1.082 ACRES

Lying in Virginia Military Survey 3442, City of Bellefontaine, Jefferson Township, Logan County, Ohio.

Being out of the Harold D. Marker and Barbara F. Marker, Trustees 60 acre tract as deeded and described in Official Record 769, Page 146 of the Logan County Records of Deeds and being more particularly described as follows:

Commencing at a railroad spike found at the intersection of center-lines of Township Road 230 and Ohio Route 47 (60 feet wide).

THENCE, with the center-line of Ohio Route 47 the following two courses:

S 50°-00'-36"W, a distance of 1508.00 feet to a railroad spike found at Station 872+30.69 (Logan County Engineer's Plan L-44 sheet 2 of 6).

S 47°-50'00"W, a distance of 781.60 feet to a MAG nail set at the TRUE POINT OF BEGINNING.

THENCE, S 20°-07'-52"E, a distance of 253.86 feet to a 5/8 inch iron rod set, passing a 5/8 inch iron rod set at 32.36 feet.

THENCE, S 66°-37'-57"W, a distance of 213.08 feet to a 5/8 inch iron rod set.

THENCE, N 23°-22'-03"W, a distance of 185.44 feet to a MAG nail set, passing a 5/8 inch iron rod set at 155.41 feet.

THENCE, with the center-line of Ohio Route 47, N 69°-14'-57"E, a distance of 24.38 feet to a railroad spike found at Station 862+36.85 (Logan County Engineer's Plan L-44 sheet 2 of 6).

THENCE, with the center-line of Ohio Route 47, N 47°-50'-00"E, a distance of 214.50 feet to the point of beginning.

Containing 1.082 acres of which 0.164 acre is within the highway right-of-way.

Property is subject to any and all previous easements and rights-of-way of record.

The basis for bearings is center-line of Ohio Route 47, being N 47°-50'-00"E, and all other bearings are from angles and distances measured in a field survey by Lee Surveying and Mapping Co., Inc. on August 16, 2011



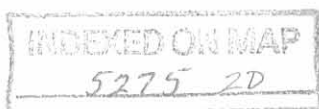
ORIGINAL STAMP IN GREEN

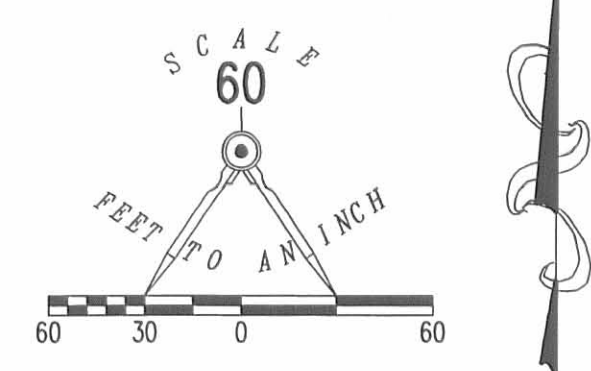
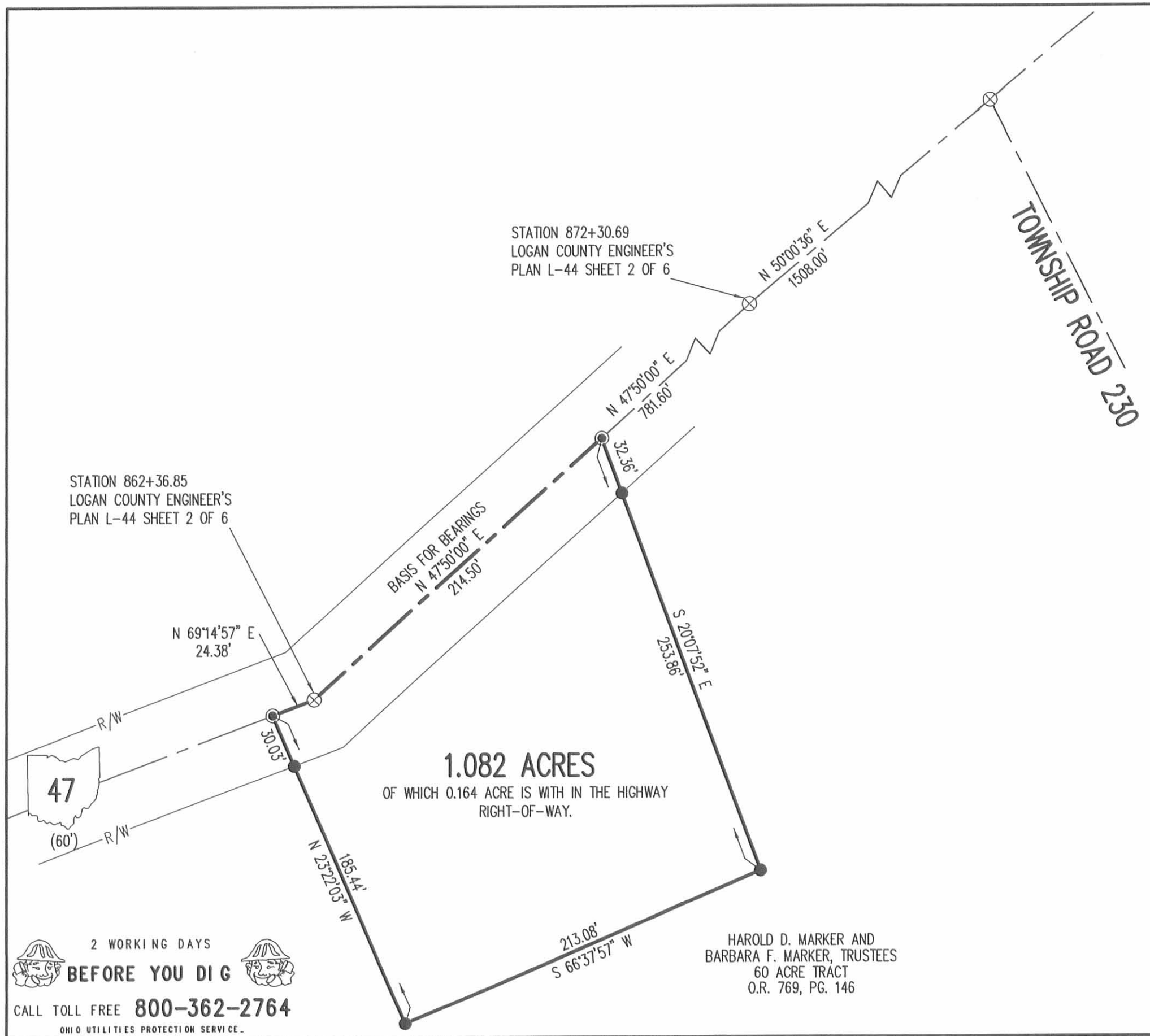
Description prepared by:

A handwritten signature in black ink that reads 'William K. Bruce'.

William K. Bruce
Professional Surveyor 7437
August 16, 2011

L-51930811





- LEGEND
- 5/8 INCH IRON ROD SET WITH PLASTIC I.D. CAP STAMPED "LSM 7437"
 - ⊙ MAG NAIL SET
 - ⊗ RAILROAD SPIKE FOUND

SURVEY OF A 1.082 ACRE TRACT OUT OF THE
HAROLD D. MARKER AND
BARBARA F. MARKER, TRUSTEES
60 ACRE TRACT
OFFICIAL RECORD 769, PAGE 146
VIRGINIA MILITARY SURVEY 3442
JEFFERSON TOWNSHIP
CITY OF BELLEFONTAINE
LOGAN COUNTY, OHIO

SURVEYED BY:

William K. Bruce

WILLIAM K. BRUCE
PROFESSIONAL SURVEYOR 7437
AUGUST 16, 2011
REVISED AUGUST 24, 2011



COPYRIGHT 2011 BY:
LEE SURVEYING & MAPPING CO., INC.
117 North Madriver Street
BELLEFONTAINE, OHIO 43311
(937) 593-7335
surveys@lsminc.us

ADW D0811 51930811 L-5193-3

2 WORKING DAYS
BEFORE YOU DIG

CALL TOLL FREE **800-362-2764**
OHIO UTILITIES PROTECTION SERVICE.

INDEXED ON MAP
5275 2P

HAROLD D. MARKER AND
BARBARA F. MARKER, TRUSTEES
60 ACRE TRACT
O.R. 769, PG. 146