

May 23, 1970

The following described real estate situated in the Township of Jefferson, County of Logan, State of Ohio and being a part of Virginia Military Survey No. 6449 and being more particularly described as follows:

Beginning at a stone with "x" mark in the East line of V.M.S. No. 6449 and the West line of V.M.S. No. 6447, said stone being the Northeast corner to Everett L. Godwin's present 211.04 Acre tract and being the center line of T. R. No. 182 produced eastward;

Thence with Godwin's north line and the center line of T. R. No. 182, N. 85° 43' W. 458.0 feet to a R. R. Spike set in said center line and being Station 58 + 22 of T. R. No. 182 survey as shown in Field Book No. 607 Page 43, Logan County Engineers Office;

Thence continuing with the center line of T. R. No. 182, N. 85° 43' W. 300.00 feet to a R. R. Spike, said spike being Station No. 61 + 22 of T. R. No. 182;

Thence with a present fence line, S. 4° 17' W. 249.60 feet to an iron pipe, passing through a wood corner post at 20.0 feet and an iron pipe at 239.6 feet;

Thence S. 85° 43' E. 299.3 feet to an iron pipe;

Thence N. 4° 47' E. 250.0 feet to the place of beginning, passing an iron pipe at 10.0 feet and an iron pipe at 225.0 feet, containing 1.77 Acres, more or less.

The above described parcel being surveyed out of the north side of Everett L. Godwin's present 211.04 Acre tract.

I hereby certify that this is a true and accurate description of a survey made by me on May 23, 1970.

*Daniel E. Gilbert*  
Daniel E. Gilbert, P.S.  
Reg. Sur. No. 5402  
428 N. Madriver St.  
Bellefontaine, Ohio 43311



4638  
10  
INDEXED ON FILE

RUSSELL E. EDE

7.93 ACRES

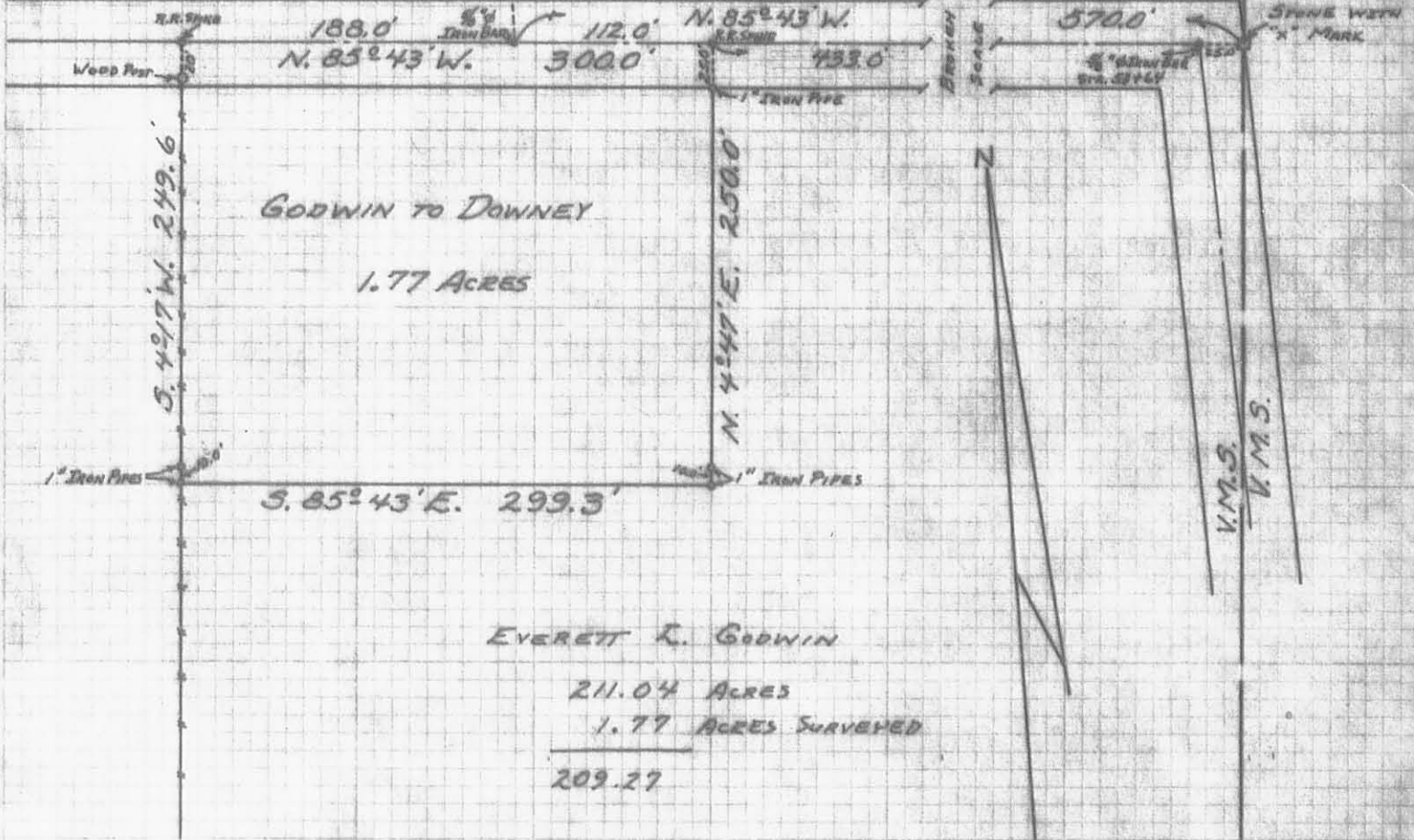
BARRY R. BLACKLIDGE

4.32 ACRES

6449  
6447

T.R. No. 182

50' R/W.



GODWIN TO DOWNEY

1.77 ACRES

EVERETT L. GODWIN

211.04 ACRES

1.77 ACRES SURVEYED

209.27

REFERENCE:

F.B. 607 Pg. 43, Co. Co. ENG. OFF.

GODWIN - DOWNEY SURVEY  
V.M.S. 6449  
JEFFERSON TOWNSHIP  
LOGAN COUNTY OHIO  
MAY 23, 1970

SURVEYED AND PLATTED BY:  
DANIEL E. GILBERT, P.S.  
REG. SUR. No. 5402  
428 N. MADRIVER ST.  
BELLEFONTAINE, OHIO 43311

SCALE: 1" = 100'

4630

INDEXED ON PLAT  
WELLS & GIBSON CO.  
MAY 23, 1970