

REC'D 3-28-97 *guy ok*



Lee Surveying and Mapping Co., Inc.



Farm Surveys • Lot Surveys • Topography • Subdivisions • Construction Layout

117 NORTH MADRIVER STREET
BELLEFONTAINE, OHIO 43311

(937) 593-7335
FAX (937) 593-7444

JACK E. TETIRICK 18.558 ACRES

Lying in Virginia Military Survey 2674, Jefferson Township, Logan County, Ohio.

Being out of the Jack E. Tetirick and Helen C. Tetirick original 110.17 acre tract as deeded and described in Volume 395, Page 297 of the Logan County Records of Deeds and being more particularly described as follows:

Beginning at a bolt found at the northwest corner of the said 110.17 acre tract and on the center-line of County Highway 2 (60 feet wide).

THENCE, with the center-line of County Highway 2, N 69°-00'-00" E, a distance of 254.35 feet to a railroad spike found.

THENCE, with the west line and the west line extended of the James Tetirick 1.516 acre tract (O.R. 102, Pg. 888), S 3°-29'-22" E, a distance of 1006.85 feet to a 5/8 inch iron rod set.

THENCE, N 79°-33'-45" E, a distance of 519.80 feet to a 3/4 inch iron rod found.

THENCE, S 10°-26'-15" E, a distance of 964.74 feet to a 5/8 inch iron rod found.

THENCE, S 79°-33'-45" W, a distance of 648.04 feet to a 5/8 inch iron rod found.

THENCE, with the east lines of the Tracy R. Yoesting 91.426 acre tract (O.R. 145, Pg. 423) and the Melvin R. Stratton 18.574 acre tract (Vol. 389, Pg. 154), N 10°-26'-15" W, a distance of 1917.57 feet to the point of beginning.

Containing 18.558 acres of which 0.174 acre is within the highway right-of-way.

The basis for bearings is the center-line of County Highway 2 being N 69°-00'-00" E, and all other bearings are from angles and distances measured in a field survey by Lee Surveying and Mapping Co., Inc. on March 21, 1997.

Description prepared by:

Jeffrey I. Lee
Professional Surveyor 6359
March 25, 1997



L 837

ORIGINAL STAMP IN GREEN

INDEXED ON MAP
4473 ID



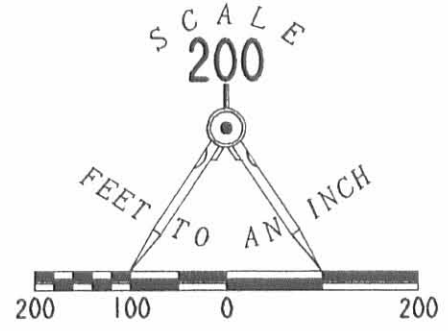
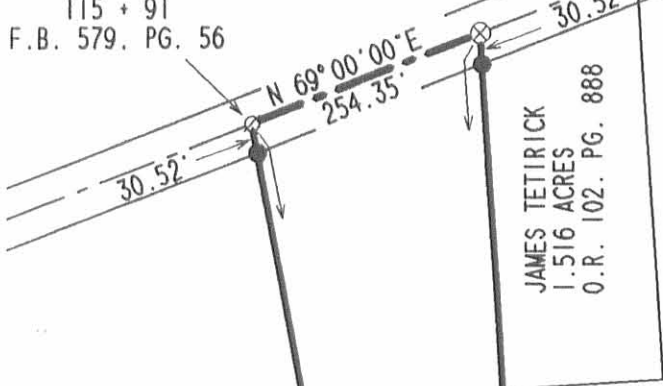
2 WORKING DAYS

CALL TOLL FREE 800-362-2764

OHIO UTILITIES PROTECTION SERVICE.

STATION
115 + 91
F.B. 579, PG. 56

COUNTY HIGHWAY 2 (60')



LEGEND

- 3/4" IRON ROD FOUND
- 5/8" IRON ROD FOUND
- ⊗ RAILROAD SPIKE FOUND
- ⊘ BOLT FOUND
- 5/8" IRON ROD SET

JACK E. TETIRICK
ORIG. 110.17 AC.
VOL. 395. PG. 297

MELVIN R. STRATTON
18.574 AC.
VOL. 389. PG. 154

18.558 ACRES
(OF WHICH 0.174 ACRE IS WITHIN
THE HIGHWAY RIGHT-OF-WAY.)

SURVEYED BY:

Jeffrey I. Lee
JEFFREY I. LEE
PROFESSIONAL SURVEYOR 6359
MARCH 21, 1997



ORIGINAL STAMP IN GREEN

TRACY R. YOESTING
91.426 ACRES
O. R. 145. PG. 423

S 10° 26' 15" E
964.74'

648.04'
S 79° 33' 45" W

N 10° 26' 15" W
1917.57'

N 79° 33' 45" E
519.80'

1006.85'
S 03° 29' 22" E

SURVEY OF 18.558 ACRES OUT OF THE
JACK E. TETIRICK AND HELEN C. TETIRICK
ORIGINAL 110.17 ACRE TRACT
VOLUME 395. PAGE 297
VIRGINIA MILITARY SURVEY 2674
JEFFERSON TOWNSHIP
LOGAN COUNTY, OHIO

INDEXED ON MAP
4473 1P

COPYRIGHT 1997 BY:
LEE SURVEYING & MAPPING CO., INC.
117 North Madriver Street
BELLEFONTAINE, OHIO 43311
(937) 593-7335

D309 TETIRICK L 837-4

Lee Surveying and Mapping Co.



Farm Surveys • Lot Surveys • Topography • Subdivisions • Construction Layout

855 EAST SANDUSKY AVENUE
BELLEFONTAINE, OHIO 43311

(513) 593-5780

CLAYTON M. LEE, P.S.
JEFFREY I. LEE, P.S.

TETIRICK SURVEY

Lying in V.M.S. 2674, Jefferson Township, Logan County, Ohio.

Being off the west side of those lands lying in the name of J.E., C.E. and H.W. Tetirick as deeded and described in Volume 324, Page 468 of the Logan County Records of Deeds and more particularly described as follows:

Beginning at an iron bolt found on the center-line of County Road 2, marking the northwest corner of said Tetirick lands and designated in County Engineer's Records (Field Book 579, Page 56) as being Station 115+91.5.

THENCE, with the west line of said Tetirick land, S 10°-26'-15" E, a distance of 1917.57 feet to an iron rod.

THENCE, at right angles, N 79°-33'-45" E, a distance of 648.04 feet to an iron rod.

THENCE, parallel to the west property line, N 10°-26'-15" W, a distance of 964.74 feet to an iron rod.

THENCE, at right angles and parallel to the south line of this survey, S 79°-33'-45" W, a distance of 608.04 feet to an iron rod set 40.00 feet easterly at right angles to the west property line.

THENCE, parallel to and 40.00 feet easterly from said west property line, N 10°-26'-15" W, a distance of 960.29 feet to an iron bolt set on the center-line of County Road 2.

THENCE, with said center-line, S 69°-00' W, a distance of 40.69 feet to the point of beginning. Containing 15.231 acres.

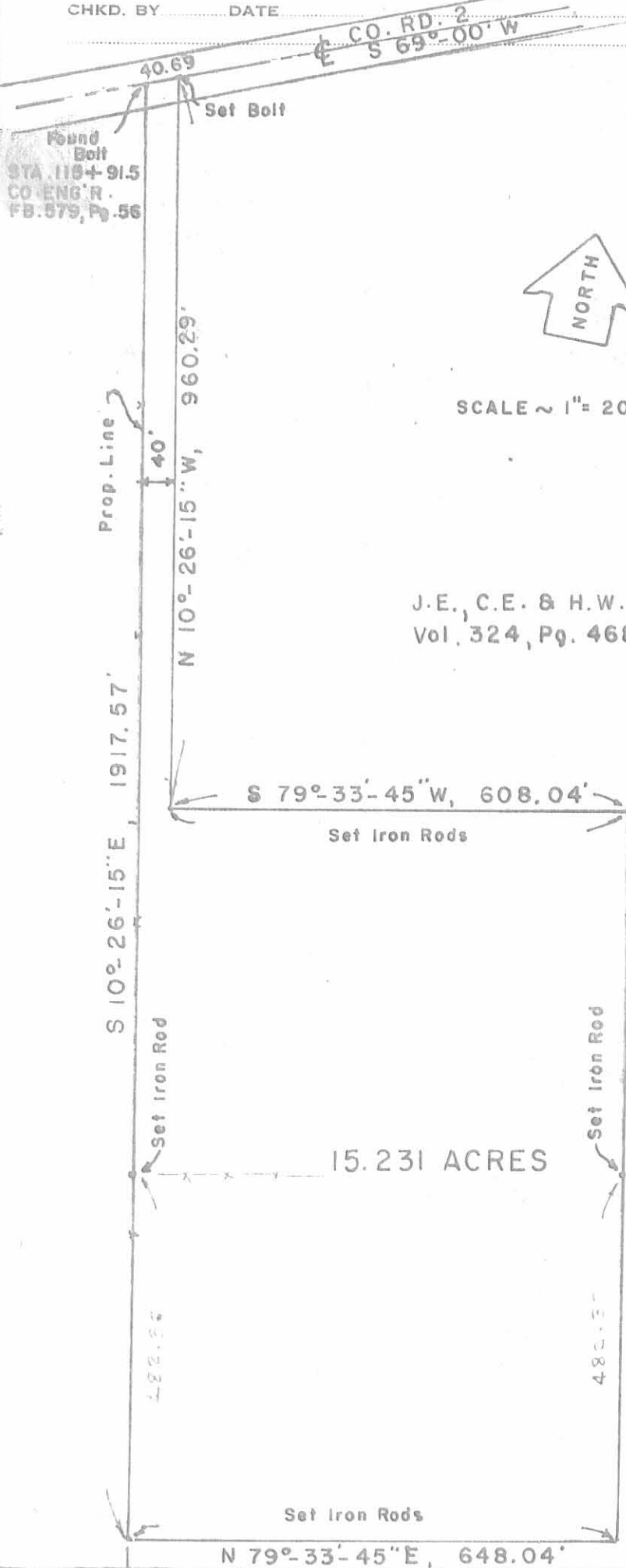
Last previous deed reference: Volume 324, Page 468.

Surveyed by:



Clayton M. Lee
Clayton M. Lee
Reg. Surveyor No. 6181
June, 1981

INDEXED ON MAP
4473 2D



Found Bolt
 STA. 118+91.5
 CO. ENG. R.
 FB. 879, Pg. 56



SCALE ~ 1" = 200'

J.E., C.E. & H.W. TETIRICK
 Vol. 324, Pg. 468

**SURVEY OF 15.231 ACRES
 OUT OF THE TETIRICK LANDS
 (Vol. 324, Pg. 468)
 V.M.S. 2674,
 JEFFERSON TOWNSHIP
 LOGAN COUNTY, OHIO**

By: *Clayton M. Lee*
 Clayton M. Lee
 Reg. Surveyor 6181
 June, 1981



4473
 2P

INDEXED ON MAP

LEE SURVEYING & MAPPING CO.
 855 E. Sandusky Ave.
 BELLEFONTAINE, OHIO 43311
 (513) 593-5780

Received 12-18-89 OK



Lee Surveying and Mapping Co.



Farm Surveys • Lot Surveys • Topography • Subdivisions • Construction Layout

143 EAST COLUMBUS AVENUE
BELLEFONTAINE, OHIO 43311

(513) 593-7335
(513) 593-5780

CLAYTON M. LEE, P.S.
JEFFREY I. LEE, P.S.

JACK TETIRICK (5.731 ACRES)

Lying in V.M.S. 2674, Jefferson Township, Logan County, Ohio.

Being out of that original 108.25 acres in the name of Tetirick as deeded and described in Volume 395, Page 297 of the Logan County Records of Deeds and being more particularly described as follows:

Beginning at a 3/4 inch bolt found on the center-line of County Highway 2, marking the northwest corner of said 108.25 acres and designated as being Station 115+91.5 in the Logan County Engineer's records (Field Book 579, Page 56).

THENCE, with the said center-line of County Highway 2, N 69°-00' E, a distance of 40.69 feet to a 3/4 inch bolt (found) THE TRUE POINT OF BEGINNING.

THENCE, continuing with said center-line of County Highway 2, N 69°-00' E, a distance of 213.66 feet to a railroad spike (set).

THENCE, S3°-29'-22" E, a distance of 369.30 feet to a 5/8 inch iron rod (set).

THENCE, N 86°-30'-38" E, a distance of 166.89 feet to a 5/8 inch iron rod (set).

THENCE, S 3°-29'-22" E, a distance of 617.21 feet to a 5/8 inch iron rod set on the north line of a previously surveyed but not recorded 15.231 acre tract.

THENCE, with said north line, S 79°-33'-45" W, a distance of 256.37 feet to a 5/8 inch iron rod (found).

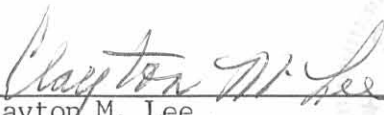
THENCE, parallel to and 40 feet easterly from the grantor's west property line, N 10°-26'-15" W, a distance of 960.29 feet to the point of beginning.

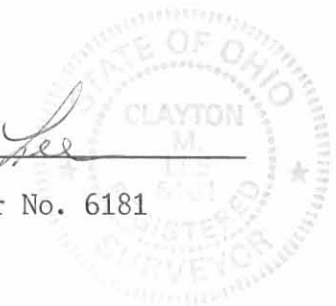
Containing 5.731 acres.

This description prepared from an actual field survey.

Basis for bearings: center-line of County Highway 2 = N 69°-00' E.

Prepared by:


Clayton M. Lee
Professional Surveyor No. 6181
December 15, 1989



COPIED STAMP IN GREEN

INDEXED ON MAP
447.3 3D-1

L-837



Lee Surveying and Mapping Co.



Farm Surveys • Lot Surveys • Topography • Subdivisions • Construction Layout

143 EAST COLUMBUS AVENUE
BELLEFONTAINE, OHIO 43311

(513) 593-7335
(513) 593-5780

CLAYTON M. LEE, P.S.
JEFFREY I. LEE, P.S.

JACK TETIRICK (1.516 Acres)

Lying in V.M.S. 2674, Jefferson Township, Logan County, Ohio.

Being out of that original 108.25 acres in the name of Tetirick as deeded and described in Volume 395, Page 297 of the Logan County records of Deeds and being more particularly described as follows:

Beginning at a 3/4 inch bolt found on the center-line of County Highway 2, marking the northwest corner of said 108.25 acres and designated as being Station 115+91.5 in the Logan County Engineer's records (Field Book 579, Page 56).

THENCE, with the said center-line of County Highway 2, N 69°-00' E, a distance of 254.35 feet to a railroad spike (set). THE TRUE POINT OF BEGINNING.

THENCE, continuing with said center-line N 69°-00' E, a distance of 175.00 feet to a railroad spike (set).

THENCE, S 3°-29'-22" E, a distance of 421.95 feet to a 5/8 inch iron rod (set).

THENCE, S 86°-30'-38" W, a distance of 166.89 feet to a 5/8 inch iron rod (set).

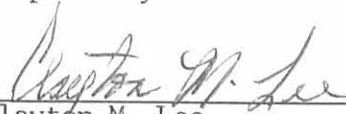
THENCE, N 3°-29'-22" W, a distance of 369.30 feet to the point of beginning.

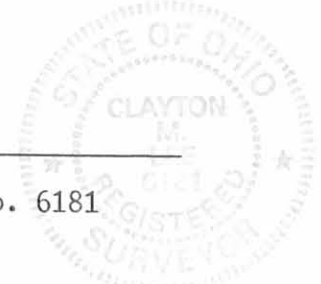
Containing 1.516 acres.

This description prepared from an actual field survey.

Basis for bearings: Center-line of County Highway 2 = N 69°-00' E

Prepared by:


Clayton M. Lee
Professional Surveyor No. 6181
December 14, 1989



ORIGINAL FILED IN 67321

INDEXED ON MAP
4473 30-2



LEGEND

- 5/8" I. ROD FOUND
- 5/8" I. ROD SET
- ⊗ BOLT FOUND
- ⊕ RR SPIKE SET
- 1/2" I. ROD FOUND
- ⊕ 3/4" I. ROD FOUND

JACK E. TETIRICK, ETAL
 108.25 ACRES
 VOL. 395, PG. 297

M. STRATTON
 18.574 AC.
 VOL. 389, PG. 154

15.231 ACRES
 BY PRIOR SURVEY
 JUNE, 1981

R. CROCKETT
 ORIG. 110 AC.
 VOL. 384, PG. 901

INDEXED ON MAP
 4473 3P

SURVEY OF TWO TRACTS OUT OF THE
 TETIRICK LANDS
 (VOL. 395, PG. 468)
 V.M.S. 2674
 JEFFERSON TOWNSHIP
 LOGAN COUNTY, OHIO

SURVEYED BY:

 JEFFREY I. LEE
 PROFESSIONAL SURVEYOR 6359
 NOVEMBER 20, 1989

December 14, 1968

The following described real estate situated in the Township of Jefferson, County of Logan, State of Ohio and being a part of Virginia Military Survey No. 2674 and being more particularly described as follows:

Beginning at a R. R. Spike in the center line of C. H. No. 2, northeast corner of Richard O. Poland's present 112.11 Acre tract and northwest corner of James E. Fulten's present 3.89 Acre tract;

Thence with the line between Poland & Fulten, S. 4° 30' E. 400.0 feet to an iron bar;

Thence S. 81° 15' W. 420.0 feet to an iron bar;

Thence N. 4° 30' W. 400.0 feet to a R. R. Spike set in the center line of C. H. No. 2, passing through an iron bar at 374.93 feet;

Thence with the center line of C. H. No. 2, N. 81° 15' E. 420.0 feet to the place of beginning, passing through a R. R. Spike at 20.0 feet, containing 3.86 Acres, more or less.

The above described 3.86 Acres being surveyed out of the northeast corner of the present 112.11 Acre tract in the name of Richard O. Poland etux.

I hereby certify that this is a true and accurate description of a survey made by me on December 14, 1968.

Daniel E. Gilbert
Daniel E. Gilbert, P.S.
Reg. Sur. No. 5402
428 N. Madriver St.
Bellefontaine, Ohio 43311



4473
INDEXED ON MAP 4D



112.11 ACRES
 - 3.86 AC. SURVEYED
 108.25 REMAINING.

- - E. E. SPIKES SET OR FOUND.
- - 5/8" φ IRON BARS SET.

REFERENCE:
 F. B. 579 PAGE 57.

SURVEYED AND PLATTED BY:
 DANIEL E. GILBERT, P.S.
 REG. SUR. NO. 5402
 428 N. MADRIVER ST.
 BELLEFONTAINE, OHIO 43311



POLAND SURVEY
 V. M. S. No. 2674
 JEFFERSON TOWNSHIP
 LOGAN COUNTY, OHIO
 DECEMBER 14, 1968

SCALE: 1" = 100'

4473 4P
INDEXED ON MAP