

Fred W. Godwin et al
vs
Barry R. Blacklidge

October 5, 1968

The following described real estate situated in the Township of Jefferson, County of Logan, State of Ohio and a being a part of Virginia Military Survey's No.'s 6447 and 6450 and being more particularly described as follows:

Beginning at a stone at the Southeast corner of V.M.S. No. 3220 and being and interior corner of V.M.S. No. 6447;

Thence with a west line of Fred W. Godwin's 31.00 acre tract, S. 0°-56' W. 468.6 feet to a stone corner, said corner being the Southeast corner of Barry R. Blacklidge's present 8.15 Acre tract in V.M.S. No. 6447;

Thence following a present fence line the following three courses and distances, S. 40° 00' E. 20.7 feet to an iron pipe, S. 0° 45' W. 294.7 feet to an iron bar set on the west side of a large wood corner post, and S. 36° 02' E. 429.1 feet to an iron bar set in the line between Fred W. Godwin and Ervin Godwin;

Thence with the line between Fred W. Godwin and Ervin Godwin, N. 5° 00' E. 2,095.3 feet to an iron bar, said iron bar being 4 feet north of a large wood corner post and on the south bank of a small stream (passing through the line between V.M.S. No. 6447 and 6450 at 1,641.2 feet more or less) and also being in the south line of P. Blair Webster's 20.00 acre tract;

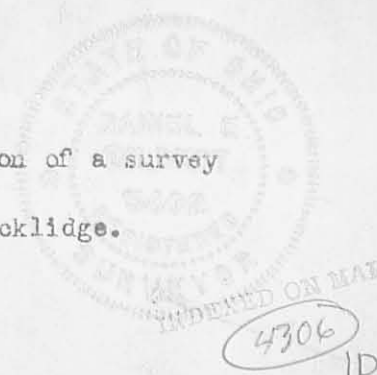
Thence with Webster's south line, N. 84° 30' W. 517.3 feet to a large stone in the East line of V.M.S. No. 3220 and being the present northeast corner to Barry R. Blacklidge's 50.66 acre tract;

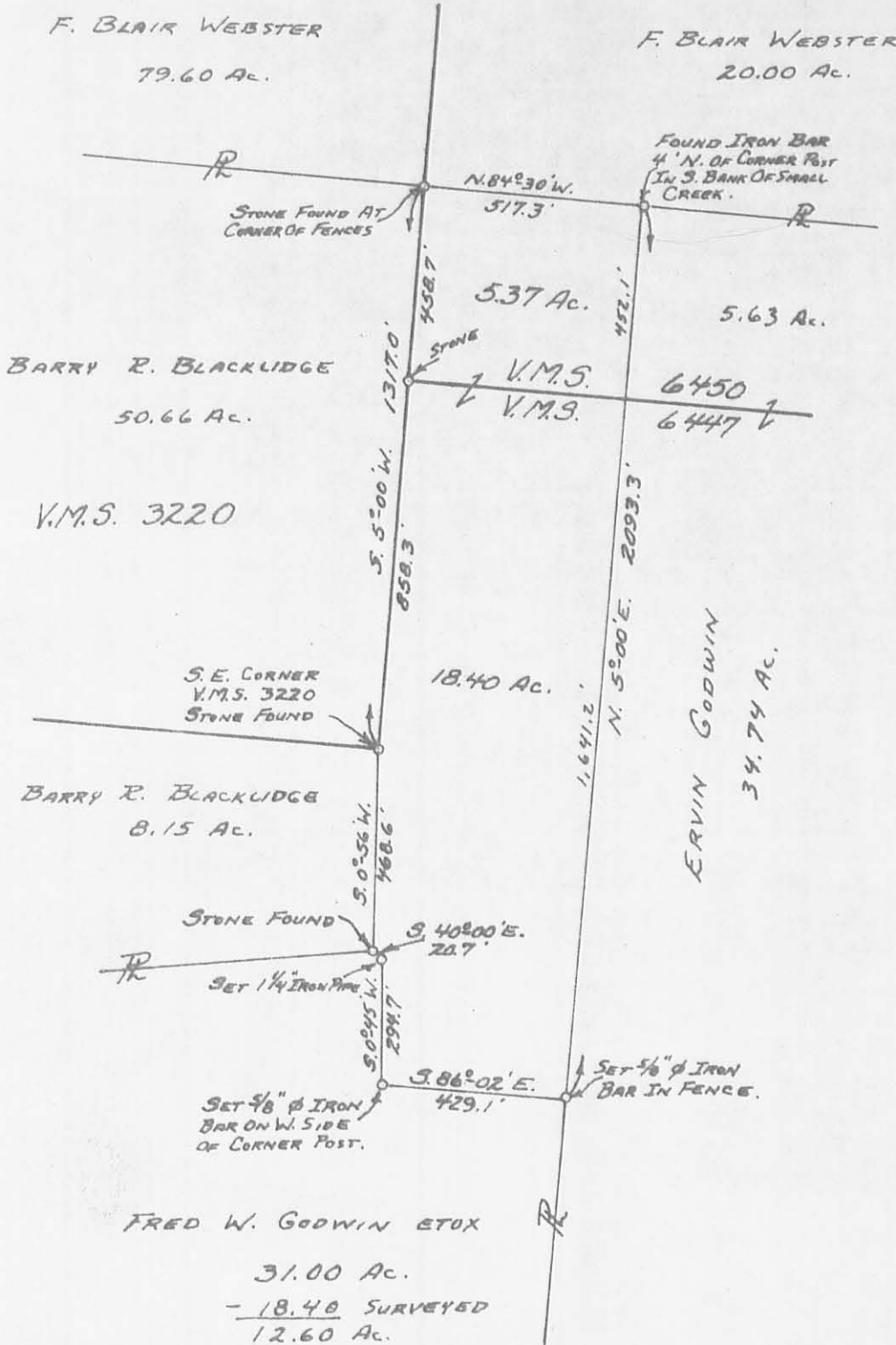
Thence with the said East line of V.M.S. No. 3220, S. 5° 00' W. 1317.0 feet to the place of beginning, passing the stone corner to V.M.S. No. 6450 and 6447 at 458.7 feet, containing 23.77 Acres, more or less.

Of the above 23.77 Acres, there is 5.37 acres in V.M.S. No. 6450 and 18.40 acres in V.M.S. No. 6447.

I hereby certify that this a true and correct description of a survey made by me on October 5, 1968 for Fred W. Godwin and Barry R. Blacklidge.
Daniel E. GILBERT, P.S., Reg. Sur. No. 5402.

Daniel E. Gilbert, P.S.





SURVEYED AND PLATTED BY:
 DANIEL E. GILBERT, P.S.
 REG. SUR. No. 5402
 428 N. MADRIVER ST.
 BELLEFONTAINE, OHIO 43311



GODWIN-BLACKLIDGE SURVEY
 V.M.S. No's. 6447 & 6450
 JEFFERSON TOWNSHIP
 LOGAN COUNTY, OHIO
 OCTOBER 5, 1968

SCALE: 1" = 400'
 INDEXED ON MAP
 4306
 IP