

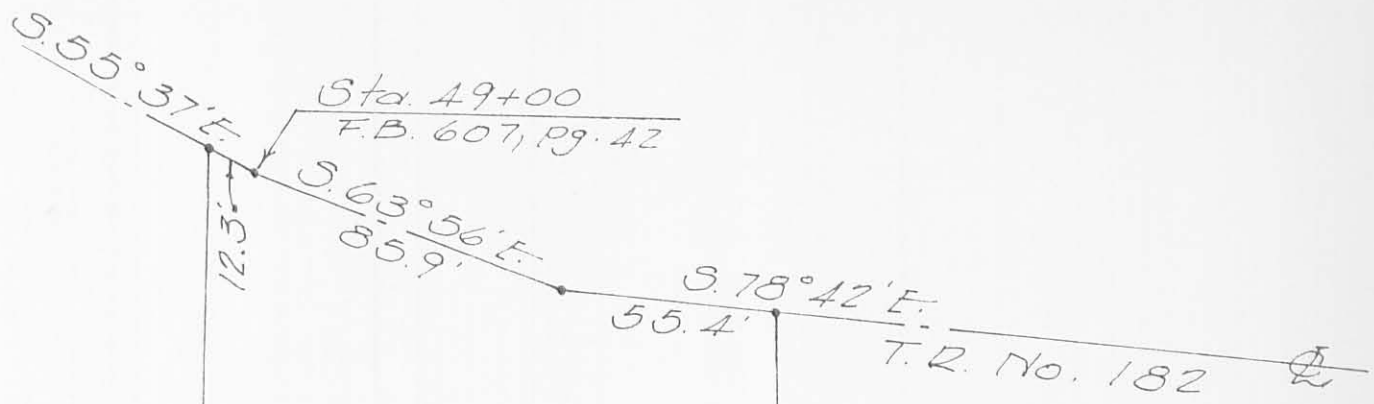
Eugene H. Godwin
1.33 AC.

N. 6° 44' E.
327.4'

1.02 AC.

S. 4° 58' W.
270.0'

156.6'
S. 89° 45' W.



GODWIN SURVEY
V.M.S. 6447
JEFFERSON TOWNSHIP
LOGAN COUNTY, OHIO
JUNE 15, 1967
SCALE 1"=50'

• = Iron Bar

Dan L. Dodson
Reg. Surveyor 4270
Bellefontaine, Ohio

4156 IP

INDEXED ON MAP