

REC'D 6-14-07 SIM OK

Lee Surveying and Mapping Co., Inc.

Land Surveys • Topography • Subdivisions • Construction Layout

117 N. Madriver St.
Bellefontaine OH 43311



Phone: (937) 593-7335
Fax: (937) 593-7444

KAUFFMAN 117.343 ACRES

Lying in Virginia Military Surveys 6121 and 13593, Jefferson Township, Logan County, Ohio.

Being out of the Dale Kauffman, sole Trustee, or his successors in trust, under the Dale Kauffman Living Trust, dated March 21, 1996, 307.6 acre tract as deeded and described in Official Record 293, Page 303 of the Logan County Records of Deeds and being more particularly described as follows:

Commencing on a 5/8 inch iron rod found with Logan County Engineer's cap on the center-line of County Highway 2 at center-line station 60+00 (Logan County Engineer's Field Book 579, Page 54).

THENCE, with the center-line of County Highway 2 (50 feet wide), N 53°45'-20"E, a distance of 1171.00 feet to a railroad spike set at the TRUE POINT OF BEGINNING.

THENCE, with the east lines of the Homer B. Taylor remainder of the original 113.11 acre tract (Vol. 304, Pg. 573) and the John H. Hoge 73.57 acre tract (Vol. 305, Pg. 317), N 27°45'-25"W, a distance of 2513.06 feet to a 5/8 inch iron rod set on the north line of Virginia Military Survey 6121, passing a 5/8 inch iron rod set at 25.28 feet.

THENCE, with the north line of Virginia Military Survey 6121, and the south line of the Zachary A. Schott 38.590 acre tract (O.R. 747, Pg. 928), N 67°-01'-27"E, a distance of 919.20 feet to a 5/8 inch iron rod set.

THENCE, with the south line of the Roger D. Brown 20 acre tract (O.R. 416, Pg. 391, Tract II), N 84°42'-08"E, a distance of 1876.94 feet to a 5/8 inch iron rod set on the east line of Virginia Military Survey 13593.

THENCE, with the east line of Virginia Military Survey 13593, and the west line of the James W. Bettinger 10.000 acre tract (O.R. 559, Pg. 123), S 11°-36'-59"E, a distance of 1569.19 feet to a railroad spike found on the center-line of County Highway 2, passing a 5/8 inch iron rod found at 1543.67 feet.

THENCE, with the center-line of County Highway 2, the following two courses:

S 68°20'-13"W, a distance of 465.06 feet to a 5/8 inch iron rod found with Logan County Engineer's cap on center-line Station 89+42 (Field Book 579, Pg. 55).

S 53°45'-20"W, a distance of 1771.34 feet to the point of beginning.

Containing 117.343 acres, of which 1.286 acres are within the highway right-of-way. There are 104.684 acres in Virginia Military Survey 6121 and 12.659 acres in Virginia Military Survey 13593.

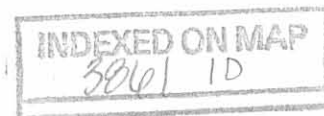
The basis for bearings is the center-line of County Highway 2, being S 53°45'-20"W, and all other bearings are from angles and distances measured in a field survey by Lee Surveying and Mapping Co., Inc. on June 8, 2007.



ORIGINAL STAMP IN GREEN

Description prepared by:

William K. Bruce
Professional Surveyor 7437
June 11, 2007



4434057

REC'D 6-14-07 SMOOK

2 WORKING DAYS
BEFORE YOU DIG
CALL TOLL FREE **800-362-2764**
OHIO UTILITIES PROTECTION SERVICE.

ZACHARY A. SCHOTT
38.590 ACRES
O.R. 747, PG. 928

ROGER D. BROWN
20 ACRES
O.R. 416, PG. 391
TRACT II

VIRGINIA MILITARY SURVEY 13593
VIRGINIA MILITARY SURVEY 6121
N 67°01'27" E 919.20'
N 84°42'08" E 1876.94'

VIRGINIA MILITARY SURVEY 13593
VIRGINIA MILITARY SURVEY 6121
VIRGINIA MILITARY SURVEY 2674
VIRGINIA MILITARY SURVEY 13593
VIRGINIA MILITARY SURVEY 13593
VIRGINIA MILITARY SURVEY 6121
(12.659 ACRES)
(104.684 ACRES)
S 11°36'59" E 1569.19'

JAMES W. BETTINGER
10,000 ACRES
O.R. 569, PG. 123

117.343 ACRES
OF WHICH 1.286 ACRES ARE WITHIN
THE HIGHWAY RIGHT-OF-WAY

DAYTON POWER & LIGHT CO.
TRANSMISSION LINE

DALE KAUFFMAN, SOLE TRUSTEE,
OR HIS SUCCESSORS IN TRUST,
UNDER THE DALE KAUFFMAN LIVING TRUST,
DATED MARCH 21, 1998
307.6 ACRES
O.R. 293, PG. 303

JOHN H. HOGE
73.57 ACRES
VOL. 305, PG. 317

N 27°45'25" W
2513.06'

COUNTY HIGHWAY 2 (50')
1771.34'
S 53°45'20" W
(BASIS FOR BEARINGS)

STA. 60+00
F.B. 579, PG. 54
N 53°45'20" E 1171.00'

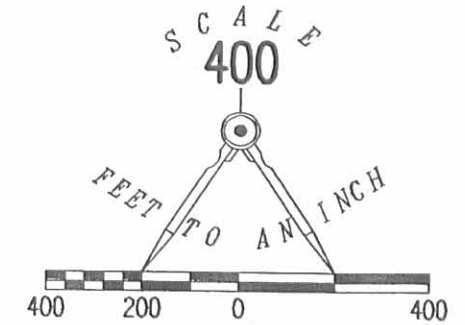
HOMER B. TAYLOR
REMAINDER OF THE
ORIGINAL 113.11 ACRES
VOL. 304, PG. 573
25.28'

STA. 89+42
F.B. 579, PG. 55
S 68°20'13" W 465.06'

STA. 124+15
F.B. 579, PG. 57
S 68°20'13" W 3007.55'

LEGEND:

- ⊕ 5/8 INCH IRON ROD FOUND WITH LOGAN COUNTY ENGINEER'S CAP
- ⊗ RAILROAD SPIKE FOUND
- ⊕ RAILROAD SPIKE SET
- 5/8 INCH IRON ROD FOUND
- 5/8 INCH IRON ROD SET



**SURVEY OF 117.343 ACRES OUT OF THE
DALE KAUFFMAN, SOLE TRUSTEE,
OR HIS SUCCESSORS IN TRUST,
UNDER THE DALE KAUFFMAN LIVING TRUST,
DATED MARCH 21, 1996
307.6 ACRE TRACT
OFFICIAL RECORD 293, PAGE 303
VIRGINIA MILITARY SURVEYS 6121 AND 13593
JEFFERSON TOWNSHIP
LOGAN COUNTY, OHIO**

SURVEYED BY:

William K. Bruce
WILLIAM K. BRUCE
PROFESSIONAL SURVEYOR 7437
JUNE 9, 2007



ORIGINAL STAMP IN GREEN

COPYRIGHT 2007 BY:
LEE SURVEYING & MAPPING CO., INC.
117 North Modriver Street
BELLEFONTAINE, OHIO 43311
(937) 593-7335
surveys@lsminc.us
KSR D0607 4434057 L-4434-3

INDEXED ON MAP
3861 IP

Taylor Survey Jefferson Township October 1965

5.96 Acres.

The following described land in Jefferson Township, Logan County, Ohio and being in V.M.S. 6121.

Beginning at a small iron in the center of County Road Number 2 and at the S.W. corner of a 102.95 acre tract in the name of Fern L. Falkner and being Station 71 plus 71 of the road survey as shown in Logan County Engineer's Field Book Number 579 Page 54.

Thence with the west side of said Falkner tract N. 27° - 39' W. 782.00 feet to an iron.

Thence S. 34° - 34' W. 539.90 feet to an iron.

Thence S. 28° - 39' E. 595.00 feet to a small iron in the center of County Road Number 2.

Thence with the center of County Road Number 2 N. 54° - 00' E. 477.00 feet to the place of beginning.

The above described tract contains 5.96 acres and is out of the S.E. corner of a 79.53 acre tract now in the name of Homer Taylor.

79.53
- 5.96
73.57

cc
Logan County Engineer.



ZD

3861

INDEXED ON MAP

ON PLAT BOOK
12-22-65
O.C.G.

Lee Surveying and Mapping Co., Inc.

Land Surveys • Topography • Subdivisions • Construction Layout

117 N. Madriver St.
Bellefontaine OH 43311



Phone: (937) 593-7335
Fax: (937) 593-7444
surveys@lsminc.us

KAUFFMAN 187.412 ACRES

Lying in Virginia Military Surveys 6121, 13593 and 3136, Jefferson Township, Logan County, Ohio.

Being out of the Dale Kauffman, Sole Trustee, or his successors in trust, under the Dale Kauffman Living Trust, Dated March 21, 1996, 307.6 acre tract as deeded and described in Official Record 293, Page 303 of the Logan County Records of Deeds and being more particularly described as follows:

Commencing on a 5/8 inch iron rod found with Logan County Engineer's cap on the center-line of County Highway 2 at center-line Station 60+00 (Logan County Engineer's Field Book 579, Page 54).

THENCE, with the center-line of County Highway 2 (50 feet wide), N 53°-45'-20"E, a distance of 767.04 feet to a MAG nail found at the TRUE POINT OF BEGINNING.

THENCE, with the center-line of County Highway 2, the following two courses:

N 53°-45'-20"E, a distance of 2175.30 feet to a 5/8 inch iron rod found with Logan County Engineer's cap on center-line Station 89+42 (Field Book 579, Pg. 55).

N 68°-20'-13"E, a distance of 465.06 feet to a railroad spike found on the east line of Virginia Military Survey 13593.

THENCE, with the east lines of Virginia Military Survey 13593 and 3136 and the west lines of the Darrin J. Rees 6.106 acre tract (O.R. 994, Pg. 59) and the Keith R. Nason 80.000 acre tract (O.R. 601, Pg. 259), S 11°-25'-28"E, a distance of 3676.94 feet to a stone found on the southeast corner of Virginia Military Survey 3136, passing a 5/8 inch iron rod set at 25.40 feet.

THENCE, with the south line of Virginia Military Survey 3136 and the northerly lines of the Imogene L. Clapsaddle, Trustee, 223.389 acre tract (O.R. 608, Pg. 397) and the Bernice R. Shanklin, Trustee, 51 acre tract (O.R. 986, Pg. 846, Parcel One Tract 2), S 62°-56'-46"W, a distance of 1839.78 feet to a 5/8 inch iron rod set, passing a 5/8 inch iron rod found at 0.53 feet.

THENCE, with the easterly lines of the M. Irene Kauffman, Sole Trustee, 61.26 acre tract (O.R. 293, Pg. 301) and the Homer B. Taylor and Betty K. Taylor, Trustees, 169.336 acre tract (O.R. 991, Pg. 443), N 36°-43'-59"W, a distance of 1542.91 feet to a point in a ditch, passing a 5/8 inch iron rod found at 1515.80 feet.

INDEXED ON MAP
3861 3D-1

Lee Surveying and Mapping Co., Inc.

Land Surveys • Topography • Subdivisions • Construction Layout

117 N. Madriver St.
Bellefontaine OH 43311



Phone: (937) 593-7335
Fax: (937) 593-7444
surveys@lsminc.us

THENCE, with the easterly line of the said 169.336 acre tract, N 11°-26'-48"W, a distance of 1782.00 feet to the point of beginning, passing 5/8 inch iron rods found at 42.59 feet and 1754.46 feet.

Containing 187.412 acres, of which 1.516 acres are within the highway right-of-way. There are 13.722 acres in Virginia Military Survey 6121, 0.755 acre in Virginia Military Survey 13593, and 172.935 acres in Virginia Military Survey 3136.

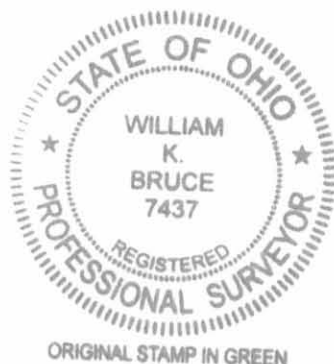
Property is subject to any and all previous easements and rights-of-way of record.

The basis for bearings is the center-line of County Highway 2, being S 53°-45'-20"W, and all other bearings are from angles and distances measured in a field survey by Lee Surveying and Mapping Co., Inc. on August 6, 2010.

Description prepared by:

A handwritten signature in black ink that reads 'William K. Bruce'.

William K. Bruce
Professional Surveyor 7437
August 12, 2010

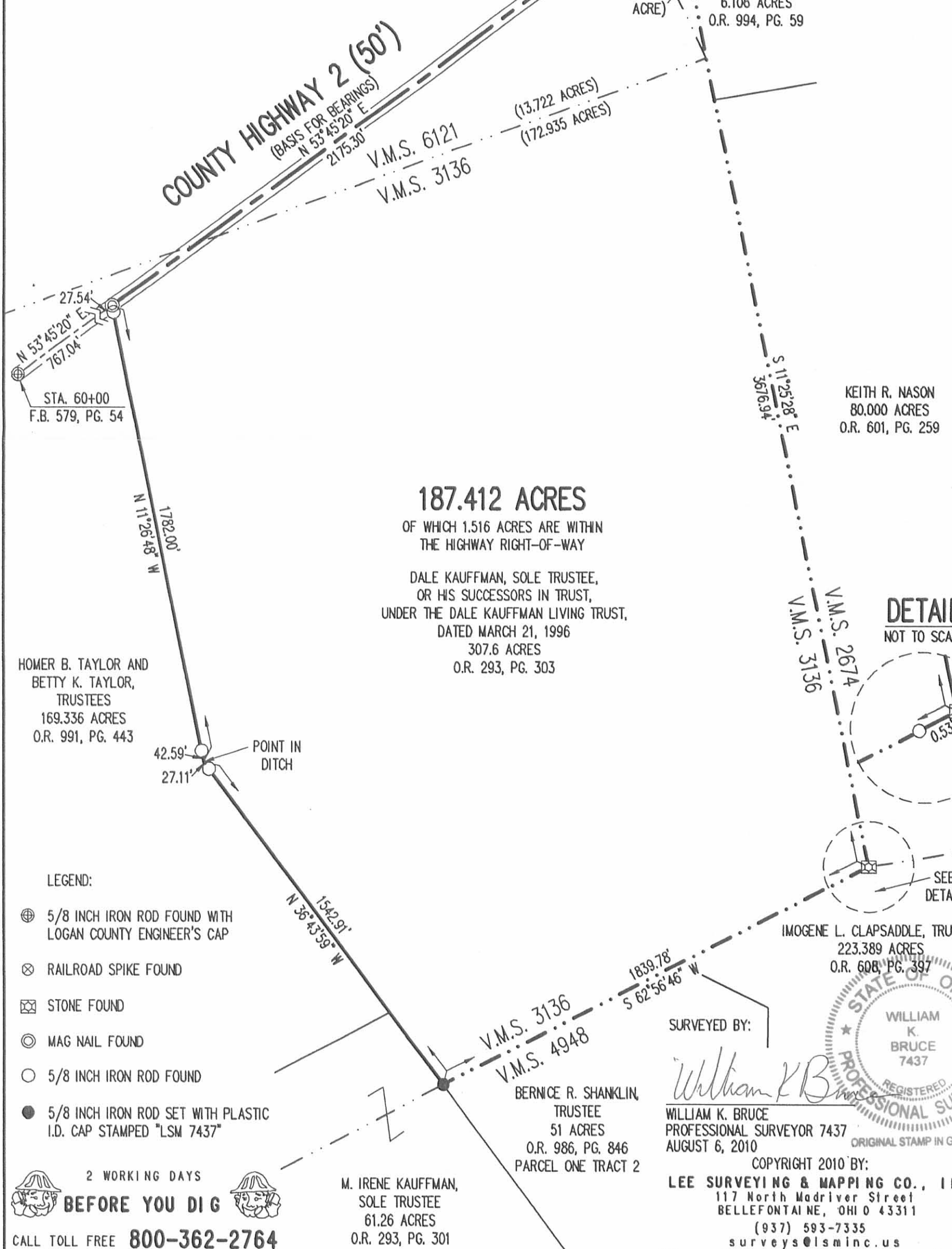
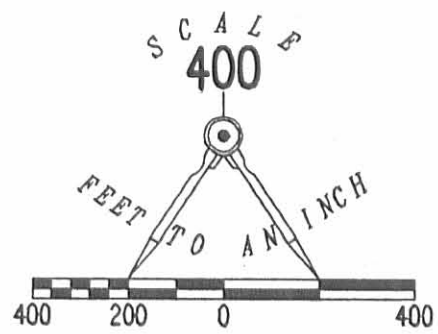


4434710



REV'D 8-16-10 SML/ak

SURVEY OF 187.412 ACRES OUT OF THE DALE KAUFFMAN, SOLE TRUSTEE, OR HIS SUCCESSORS IN TRUST, UNDER THE DALE KAUFFMAN LIVING TRUST, DATED MARCH 21, 1996 307.6 ACRE TRACT OFFICIAL RECORD 293, PAGE 303 VIRGINIA MILITARY SURVEYS 6121, 13593 AND 3136 JEFFERSON TOWNSHIP LOGAN COUNTY, OHIO



187.412 ACRES
OF WHICH 1.516 ACRES ARE WITHIN THE HIGHWAY RIGHT-OF-WAY
DALE KAUFFMAN, SOLE TRUSTEE, OR HIS SUCCESSORS IN TRUST, UNDER THE DALE KAUFFMAN LIVING TRUST, DATED MARCH 21, 1996 307.6 ACRES O.R. 293, PG. 303

HOMER B. TAYLOR AND BETTY K. TAYLOR, TRUSTEES 169.336 ACRES O.R. 991, PG. 443

DARRIN J. REES 6.106 ACRES O.R. 994, PG. 59

KEITH R. NASON 80.000 ACRES O.R. 601, PG. 259

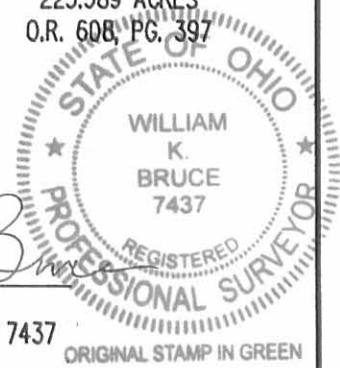
IMOGENE L. CLAPSADDLE, TRUSTEE 223.389 ACRES O.R. 608, PG. 397

BERNICE R. SHANKLIN, TRUSTEE 51 ACRES O.R. 986, PG. 846 PARCEL ONE TRACT 2

M. IRENE KAUFFMAN, SOLE TRUSTEE 61.26 ACRES O.R. 293, PG. 301

- LEGEND:
- ⊕ 5/8 INCH IRON ROD FOUND WITH LOGAN COUNTY ENGINEER'S CAP
 - ⊗ RAILROAD SPIKE FOUND
 - ⊠ STONE FOUND
 - ⊙ MAG NAIL FOUND
 - 5/8 INCH IRON ROD FOUND
 - 5/8 INCH IRON ROD SET WITH PLASTIC I.D. CAP STAMPED "LSM 7437"

DETAIL
NOT TO SCALE



SURVEYED BY:

William K. Bruce
WILLIAM K. BRUCE
PROFESSIONAL SURVEYOR 7437
AUGUST 6, 2010

COPYRIGHT 2010 BY:
LEE SURVEYING & MAPPING CO., INC.
117 North Madriver Street
BELLEFONTAINE, OHIO 43311
(937) 593-7335
surveys@lsminc.us
KSS D0710 4434710B L-4434-3

2 WORKING DAYS
BEFORE YOU DIG
CALL TOLL FREE **800-362-2764**
OHIO UTILITIES PROTECTION SERVICE

INDEXED ON MAP
3861 3P

Lee Surveying and Mapping Co., Inc.

Land Surveys • Topography • Subdivisions • Construction Layout

117 N. Madriver St.
Bellefontaine OH 43311



Phone: (937) 593-7335
Fax: (937) 593-7444
surveys@lsminc.us

KAUFFMAN 36.717 ACRES

Lying in Virginia Military Surveys 6121 and 13593, Jefferson Township, Logan County, Ohio.

Being out of the Dale Kauffman, Sole Trustee, or his successors in trust, under the Dale Kauffman Living Trust, Dated March 21, 1996, 307.6 acre tract as deeded and described in Official Record 293, Page 303 of the Logan County Records of Deeds and being more particularly described as follows:

Commencing on a 5/8 inch iron rod found with Logan County Engineer's cap on the center-line of County Highway 2 at center-line Station 60+00 (Logan County Engineer's Field Book 579, Page 54).

THENCE, with the center-line of County Highway 2 (50 feet wide), N 53°-45'-20"E, a distance of 1701.30 feet to a MAG nail set at the TRUE POINT OF BEGINNING, passing a railroad spike set at 1171.00 feet.

THENCE, N 49°-10'-12"W, a distance of 721.69 feet to a 5/8 inch iron rod set, passing a 5/8 inch iron rod set at 30.00 feet.

THENCE, N 50°-38'-41"E, a distance of 511.00 feet to a 5/8 inch iron rod set.

THENCE, N 29°-47'-25"E, a distance of 529.42 feet to a 5/8 inch iron rod set.

THENCE, S 65°-21'-02"E, a distance of 171.98 feet to a 5/8 inch iron rod set.

THENCE, N 57°-24'-48"E, a distance of 808.48 feet to a 5/8 inch iron rod set.

THENCE, N 40°-21'-45"E, a distance of 418.78 feet to a 5/8 inch iron rod set on the east line of Virginia Military Survey 13593.

THENCE, with the east line of Virginia Military Survey 13593 and the west line of the James W. Bettinger 10.000 acre tract (O.R. 559, Pg. 123), S 11°-36'-59"E, a distance of 1054.32 feet to a railroad spike found on the center-line of County Highway 2, passing a 5/8 inch iron rod found at 1028.80 feet.

THENCE, with the center-line of County Highway 2, the following two courses:

S 68°-20'-13"W, a distance of 465.06 feet to a 5/8 inch iron rod found with Logan County Engineer's cap on center-line Station 89+42 (Field Book 579, Pg. 55)

INDEXED ON MAP
3861 4D-1

Lee Surveying and Mapping Co., Inc.

Land Surveys • Topography • Subdivisions • Construction Layout

117 N. Madriver St.
Bellefontaine OH 43311



Phone: (937) 593-7335
Fax: (937) 593-7444
surveys@lsminc.us

S 53°-45'-20"W, a distance of 1241.04 feet to the point of beginning.

Containing 36.717 acres, of which 0.984 acre is within the highway right-of-way. There are 31.351 acres in Virginia Military Survey 6121 and 5.366 acres in Virginia Military Survey 13593.

Property is subject to any and all previous easements and rights-of-way of record.

The basis for bearings is the center-line of County Highway 2, being S 53°-45'-20"W, and all other bearings are from angles and distances measured in a field survey by Lee Surveying and Mapping Co., Inc. on June 9, 2007 and revised on August 6, 2010.



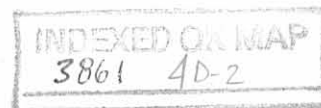
ORIGINAL STAMP IN GREEN

Description prepared by:

A handwritten signature in black ink that reads 'William K. Bruce'.

William K. Bruce
Professional Surveyor 7437
August 12, 2010

4434710



REC'D 8-13-10 SMM OK

Lee Surveying and Mapping Co., Inc.

Land Surveys • Topography • Subdivisions • Construction Layout

117 N. Madriver St.
Bellefontaine OH 43311



Phone: (937) 593-7335
Fax: (937) 593-7444
surveys@lsminc.us

KAUFFMAN 80.626 ACRES

Lying in Virginia Military Surveys 6121 and 13593, Jefferson Township, Logan County, Ohio.

Being out of the Dale Kauffman, Sole Trustee, or his successors in trust, under the Dale Kauffman Living Trust, Dated March 21, 1996, 307.6 acre tract as deeded and described in Official Record 293, Page 303 of the Logan County Records of Deeds and being more particularly described as follows:

Commencing on a 5/8 inch iron rod found with Logan County Engineer's cap on the center-line of County Highway 2 at center-line Station 60+00 (Logan County Engineer's Field Book 579, Page 54).

THENCE, with the center-line of County Highway 2 (50 feet wide), N 53°-45'-20"E, a distance of 1171.00 feet to a railroad spike set at the TRUE POINT OF BEGINNING.

THENCE, with the east lines of the Homer B. Taylor and Betty K. Taylor, Trustees, 5.96 acre tract (O.R. 991, Pg. 437) and the John H. Hoge 73.57 acre tract (Vol. 305, Pg. 317), N 27°-45'-25"W, a distance of 2513.06 feet to a 5/8 inch iron rod set on the north line of Virginia Military Survey 6121, passing a 5/8 inch iron rod set at 25.28 feet.

THENCE, with the north line of Virginia Military Survey 6121, and the south line of the Zachary A. Schott 38.590 acre tract (O.R. 747, Pg. 928), N 67°-01'-27"E, a distance of 919.20 feet to a 5/8 inch iron rod set.

THENCE, with the south line of the Roger D. Brown 20 acre tract (O.R. 416, Pg. 395, Tract II), N 84°-42'-08"E, a distance of 1876.94 feet to a 5/8 inch iron rod set on the east line of Virginia Military Survey 13593.

THENCE, with the east line of Virginia Military Survey 13593, and the west line of the James W. Bettinger 10.000 acre tract (O.R. 559, Pg. 123), S 11°-36'-59"E, a distance of 514.87 feet to a 5/8 inch iron rod set.

THENCE, S 40°-21'-45"W, a distance of 418.78 feet to a 5/8 inch iron rod set.

THENCE, S 57°-24'-48"W, a distance of 808.48 feet to a 5/8 inch iron rod set.

THENCE, N 65°-21'-02"W, a distance of 171.98 feet to a 5/8 inch iron rod set.

THENCE, S 29°-47'-25"W, a distance of 529.42 feet to a 5/8 inch iron rod set

Lee Surveying and Mapping Co., Inc.

Land Surveys • Topography • Subdivisions • Construction Layout

117 N. Madriver St.
Bellefontaine OH 43311



Phone: (937) 593-7335
Fax: (937) 593-7444
surveys@lsminc.us

THENCE, S 50°-38'-41"W, a distance of 511.00 feet to a 5/8 inch iron rod set.

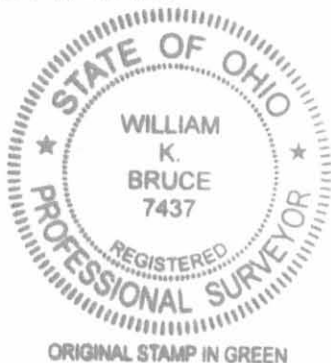
THENCE, S 49°-10'-12"E, a distance of 721.69 feet to a MAG nail set on the center-line of County Highway 2, passing a 5/8 inch iron rod set at 691.69 feet.

THENCE, with the center-line of County Highway 2, S 53°-45'-20"W, a distance of 530.30 feet to the point of beginning.

Containing 80.626 acres, of which 0.302 acre is within the highway right-of-way. There are 73.333 acres in Virginia Military Survey 6121 and 7.293 acres in Virginia Military Survey 13593.

Property is subject to any and all previous easements and rights-of-way of record.

The basis for bearings is the center-line of County Highway 2, being S 53°-45'-20"W, and all other bearings are from angles and distances measured in a field survey by Lee Surveying and Mapping Co., Inc. on June 9, 2007 and revised on August 6, 2010.

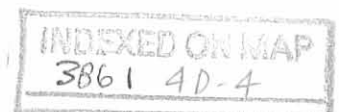


Description prepared by:

A handwritten signature in cursive script that reads 'William K. Bruce'.

William K. Bruce
Professional Surveyor 7437
August 12, 2010

4434710



FILED B-13-10 SAMJMC

2 WORKING DAYS
BEFORE YOU DIG
CALL TOLL FREE **800-362-2764**
OHIO UTILITIES PROTECTION SERVICE.

ZACHARY A. SCHOTT
38.590 ACRES
O.R. 747, PG. 928

JOHN H. HOGE
73.57 ACRES
VOL. 305, PG. 317

ROGER D. BROWN
20 ACRES
O.R. 416, PG. 395
TRACT II

VIRGINIA MILITARY SURVEY 13593

VIRGINIA MILITARY SURVEY 6121

VIRGINIA MILITARY SURVEY 13593

V.M.S. 2674

V.M.S. 13593

V.M.S. 6121

(7.293 ACRES)

(73.333 ACRES)

(5.366 ACRES)

(31.351 ACRES)

80.626 ACRES

OF WHICH 0.302 ACRE IS WITHIN
THE HIGHWAY RIGHT-OF-WAY

DALE KAUFFMAN, SOLE TRUSTEE,
OR HIS SUCCESSORS IN TRUST,
DATED MARCH 21, 1996
307.6 ACRES
O.R. 293, PG. 303

DAYTON POWER & LIGHT CO.
TRANSMISSION LINE

36.717 ACRES

OF WHICH 0.984 ACRE IS WITHIN
THE HIGHWAY RIGHT-OF-WAY

COUNTY HIGHWAY 2 (50')

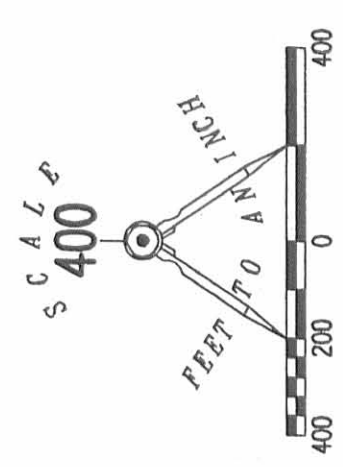
(BASIS FOR BEARINGS)

STA. 124+15
F.B. 579, PG. 57

STA. 89+42
F.B. 579, PG. 55

STA. 60+00
F.B. 579, PG. 54

- LEGEND:
- ⊕ 5/8 INCH IRON ROD FOUND WITH LOGAN COUNTY ENGINEER'S CAP
 - ⊗ RAILROAD SPIKE FOUND
 - ⊕ RAILROAD SPIKE SET
 - ⊙ MAG NAIL SET
 - 5/8 INCH IRON ROD FOUND
 - 5/8 INCH IRON ROD SET WITH PLASTIC I.D. CAP STAMPED "LSM 7437"



**SURVEY OF TWO TRACTS OUT OF THE
DALE KAUFFMAN, SOLE TRUSTEE,
OR HIS SUCCESSORS IN TRUST,
UNDER THE DALE KAUFFMAN LIVING TRUST,
DATED MARCH 21, 1996
307.6 ACRE TRACT
OFFICIAL RECORD 293, PAGE 303
VIRGINIA MILITARY SURVEYS 6121 AND 13593
JEFFERSON TOWNSHIP
LOGAN COUNTY, OHIO**

SURVEYED BY:

William K. Bruce
WILLIAM K. BRUCE
PROFESSIONAL SURVEYOR 7437
JUNE 9, 2007
REVISED AUGUST 6, 2010



COPYRIGHT 2010 BY:
LEE SURVEYING & MAPPING CO., INC.
117 North Madriver Street
BELLEFONTAINE, OHIO 43311
(937) 593-7335
surveys@lsminc.us
KSS 00710 4434710A L-4434-3

INDEXED ON MAP
3861 4P