

REC'D 10-23-00 S.M.Y. OK ✓

# Lee Surveying and Mapping Co., Inc.

Land Surveys • Topography • Subdivisions • Construction Layout

117 N. Madriver St.  
Bellefontaine OH 43311



Phone: (937) 593-7335  
Fax: (937) 593-7444

## JENKINS 2.148 ACRES

Lying in the Virginia Military Survey 3137, Jefferson Township, Logan County, Ohio.

Being out of the Ronald K. Jenkins original 2.87 and original 4.75 acre tracts as deeded and described in Volume 205, Page 254 of the Logan County Records and Deeds and being more particularly described as follows:

Beginning at a 1 inch iron rod found at the intersection of the center-line of the westbound lanes of U.S. Route 33 (Station 1102 + 82.66), and the center-line of County Highway 5 (Station 24 + 48.64),

THENCE, with the center-line of County Highway 5 (right of way varies), S 25°-13'-00" W, a distance of 218.63 feet to a MAG nail set at the TRUE POINT OF BEGINNING.

THENCE, with the center-line of County Highway 5, S 25°-13'-00" W, a distance of 106.38 feet to a 3/4 inch square iron rod found.

THENCE, with the north line of Premier Properties original 194.78 acre tract (O.R. 359, Page 777, Parcel I), N 69°-14'-30" W, a distance of 405.30 feet to a 5/8 inch iron rod set, passing a 5/8 inch iron rod set at 30.08 feet.

THENCE, with the east line of Fleetwood Farms Ltd. 43.114 acre tract (O.R. 456, Page 801 Parcel II), N 15°-19'-48" E, a distance of 280.58 feet to an 8 inch stone monument found, passing a 5/8 inch iron rod set at 280.28 feet.

THENCE, continuing with said line, N 18°-21'-45" E, a distance of 42.75 feet to a 5/8 inch iron rod set.

THENCE, with the south limited access right-of-way of U.S. Route 33 the following two courses:

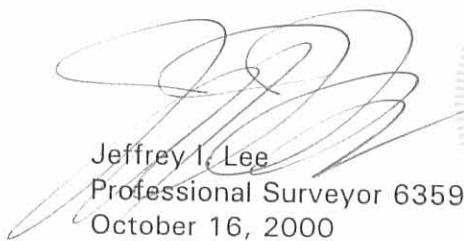
S 50°-08'-00" E, a distance of 122.95 feet to a concrete right-of-way monument found.

S 40°-53'-40" E, a distance of 370.10 feet to the point of beginning, passing a 5/8 inch iron rod set a distance of 316.47 feet.

Containing 2.148 acre of which 0.132 acre is within the highway right-of-way.

The basis for bearings is the center-line of County Highway 5 being, S 25°-13'-00" W, and all other bearings are from angles and distances measured in a field survey by Lee Surveying and Mapping Co., Inc. on October 11, 2000.

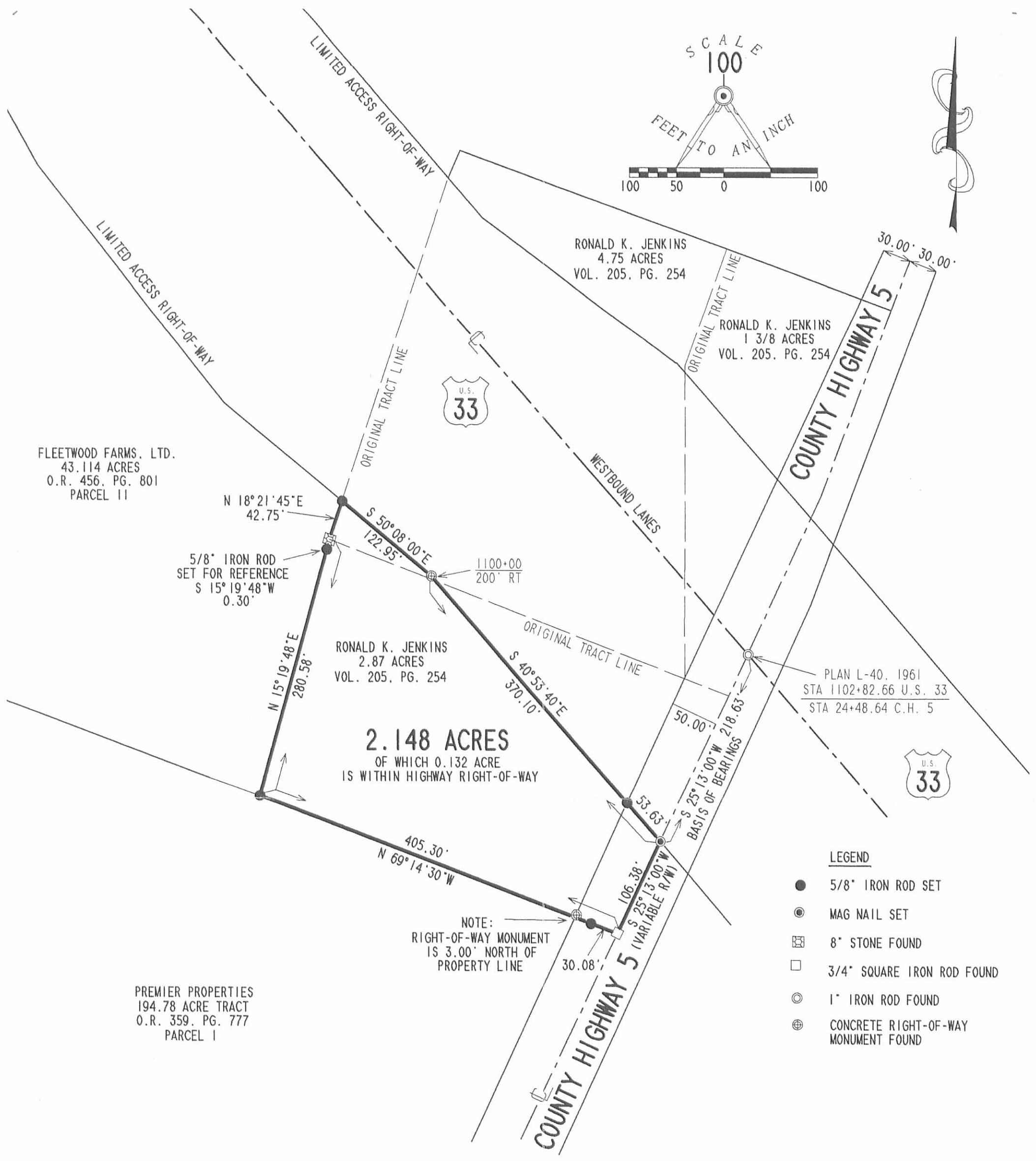
Description prepared by:

  
Jeffrey I. Lee  
Professional Surveyor 6359  
October 16, 2000



ORIGINAL STAMP IN GREEN L-3030

INDEXED ON MAP  
3511 ID



**SURVEY OF 2.148 ACRES OUT OF THE  
RONALD K. JENKINS AND IRENE E. JENKINS  
ORIGINAL 2.87 ACRE AND 4.75 ACRE TRACT  
VOLUME 205, PAGE 254  
VIRGINIA MILITARY SURVEY 3137  
JEFFERSON TOWNSHIP  
LOGAN COUNTY, OHIO**

SURVEYED BY:  
  
JEFFREY I. LEE  
PROFESSIONAL SURVEYOR 6359  
OCTOBER 11, 2000



ORIGINAL STAMP IN GREEN  
COPYRIGHT 2000 BY:  
**LEE SURVEYING & MAPPING CO., INC.**  
117 North Madriver Street  
BELLEFONTAINE, OHIO 43311  
(937) 593-7335

2 WORKING DAYS  
**BEFORE YOU DIG**  
CALL TOLL FREE **800-362-2764**  
OHIO UTILITIES PROTECTION SERVICE.

INDEXED ON MAP  
3511 1P

D-388      RKJENK      L-3030-3  
RKJENK.DAT

HARRINGTON SURVEY  
V. M. S. 3137  
JEFFERSON TOWNSHIP

September 22, 1962

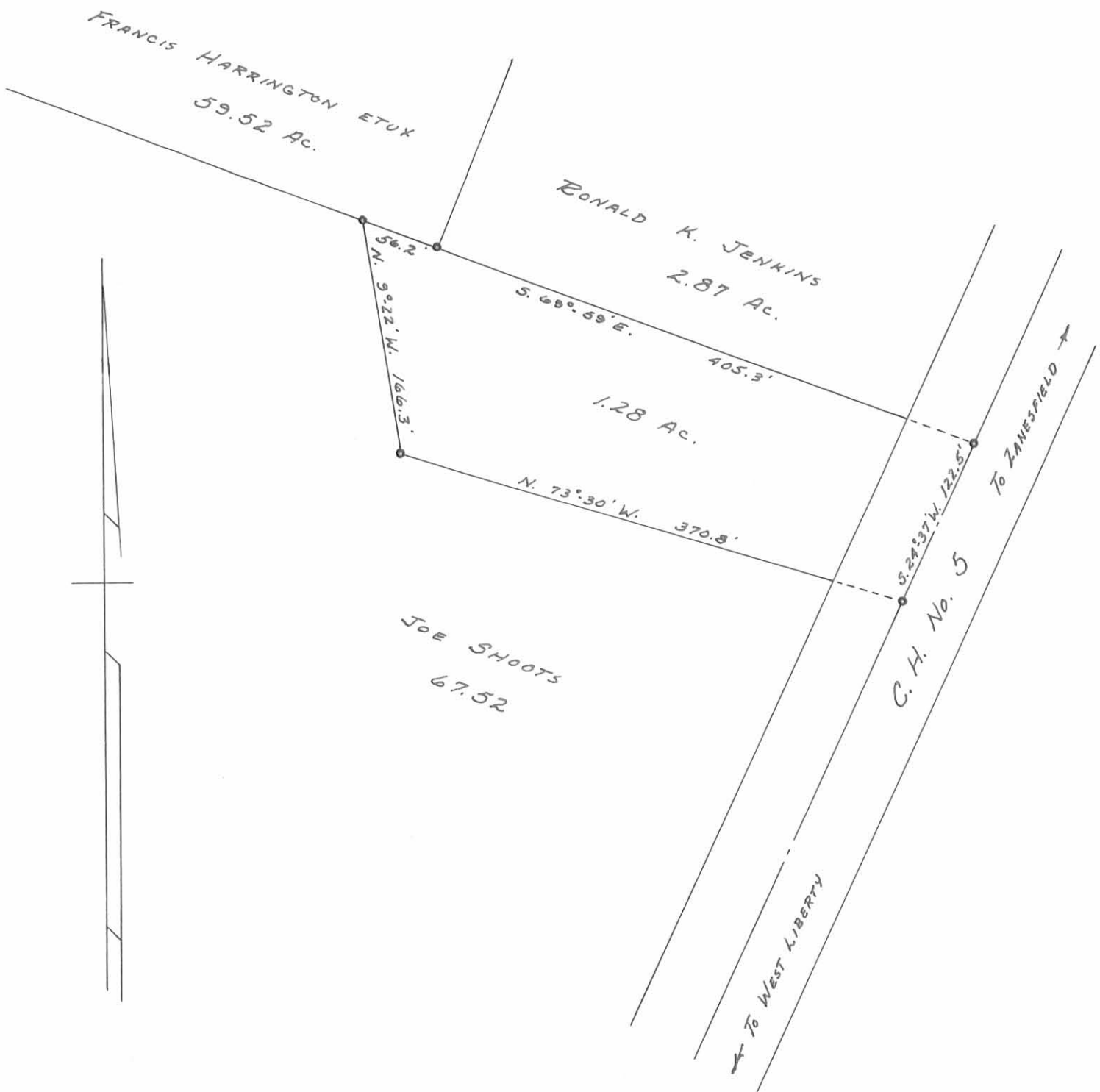
The following described real estate situated in Jefferson Township, Logan County, Ohio and being part of Virginia Military Survey 3137 and more particularly described as follows:

Beginning at an iron pin in the center of County Highway 5 at the southeast corner of Ronald K. Jenkins' 2.87 acre tract; thence with the centerline of said County Highway 5, S. 24°37' W. 122.5 feet to an iron pin; thence N. 73°30' W. 370.8 feet to a stake; thence N. 9° 22' W. 166.3 feet to a stake in the south line of Francis Harrington's 59.52 acre tract; thence with said Harrington's south line S. 69° 59' E. 56.2 feet to a post at the southeast corner of said tract and the southwest corner of said Jenkins' tract; thence with said Jenkins' south line S. 69° 59' E. 405.3 feet to the place of beginning.

Containing 1.28 acres more or less.

3511 2D

INDEXED ON MAP



HARRINGTON SURVEY  
 V. M. S. 3137  
 JEFFERSON TOWNSHIP  
 LOGAN COUNTY, OHIO  
 SURVEYED BY DAN L. DODSON - SEPT. 22, 1962  
 DRAWN BY DANIEL E. GILBERT - SEPT. 4, 1963  
 SCALE: 1" = 100'

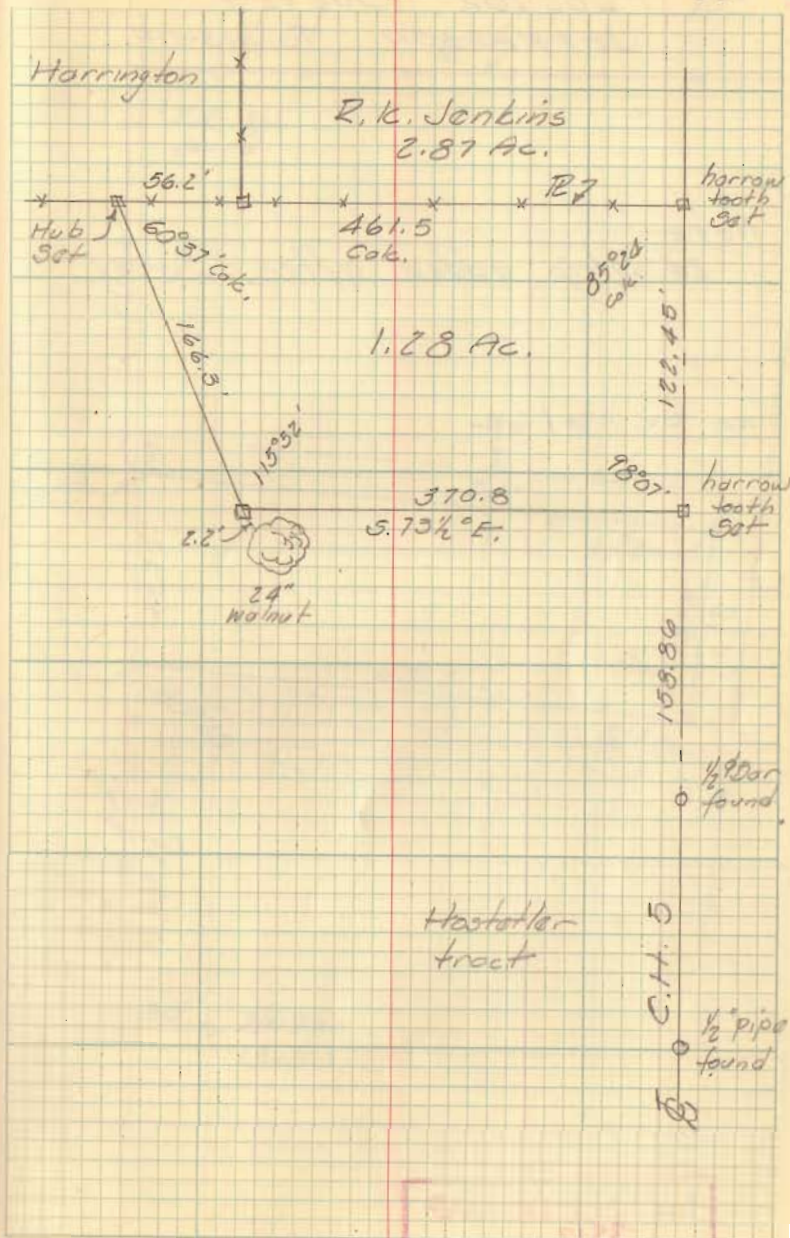
3511 2P

INDEXED ON MAP

HARRINGTON SURVEY  
JEFFERSON TWP.

Shoots to Harrington

9-22-62  
60° 45



INDEXED ON MAP  
3511

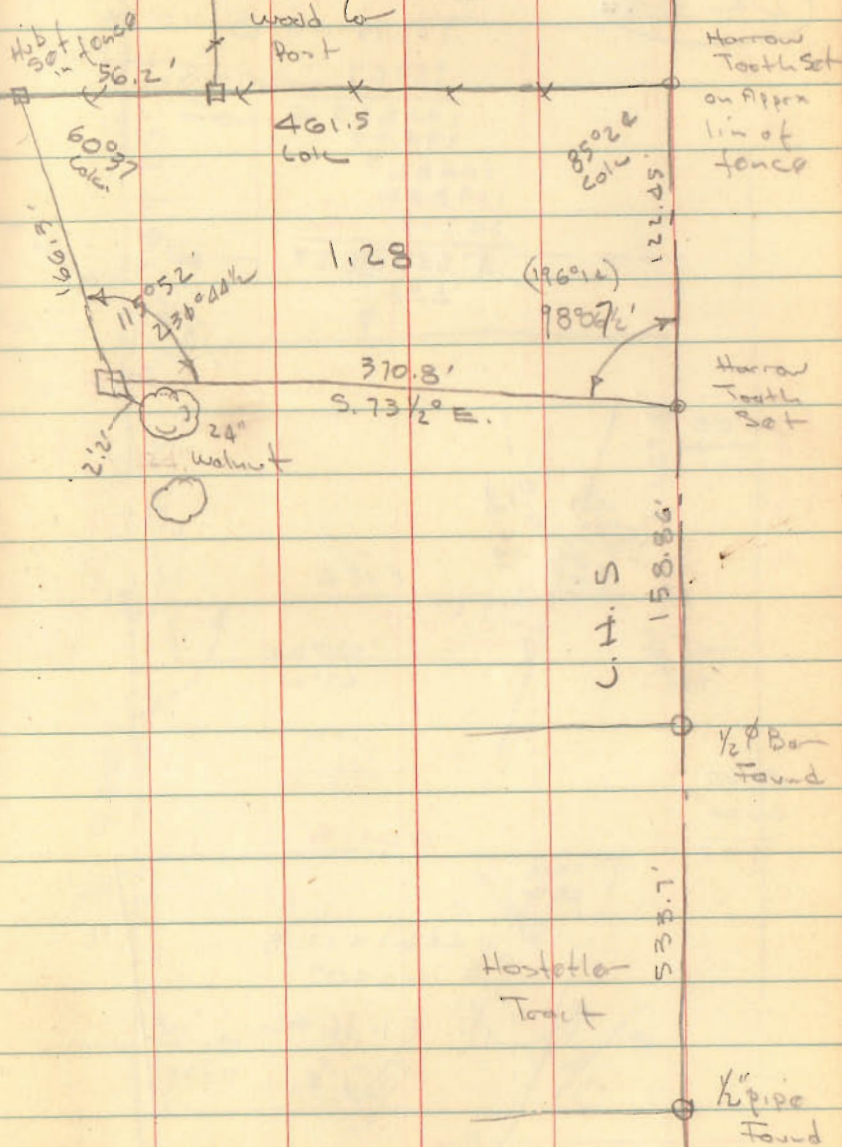


HARRINGTON

JEFFERSON TWP

R. K. Jenkins  
2.87 Ac.

7-22-62  
600 53



Bl. 4, pg 45

INDEXED ON MAP  
3511