

GILLESPIE DESCRIPTION
V. M. S. 5738
JEFFERSON TOWNSHIP

June 11, 1962

The following described real estate situated in Jefferson Township, Logan County, Ohio and being part of Virginia Military Survey 5738 and more particularly described as follows:

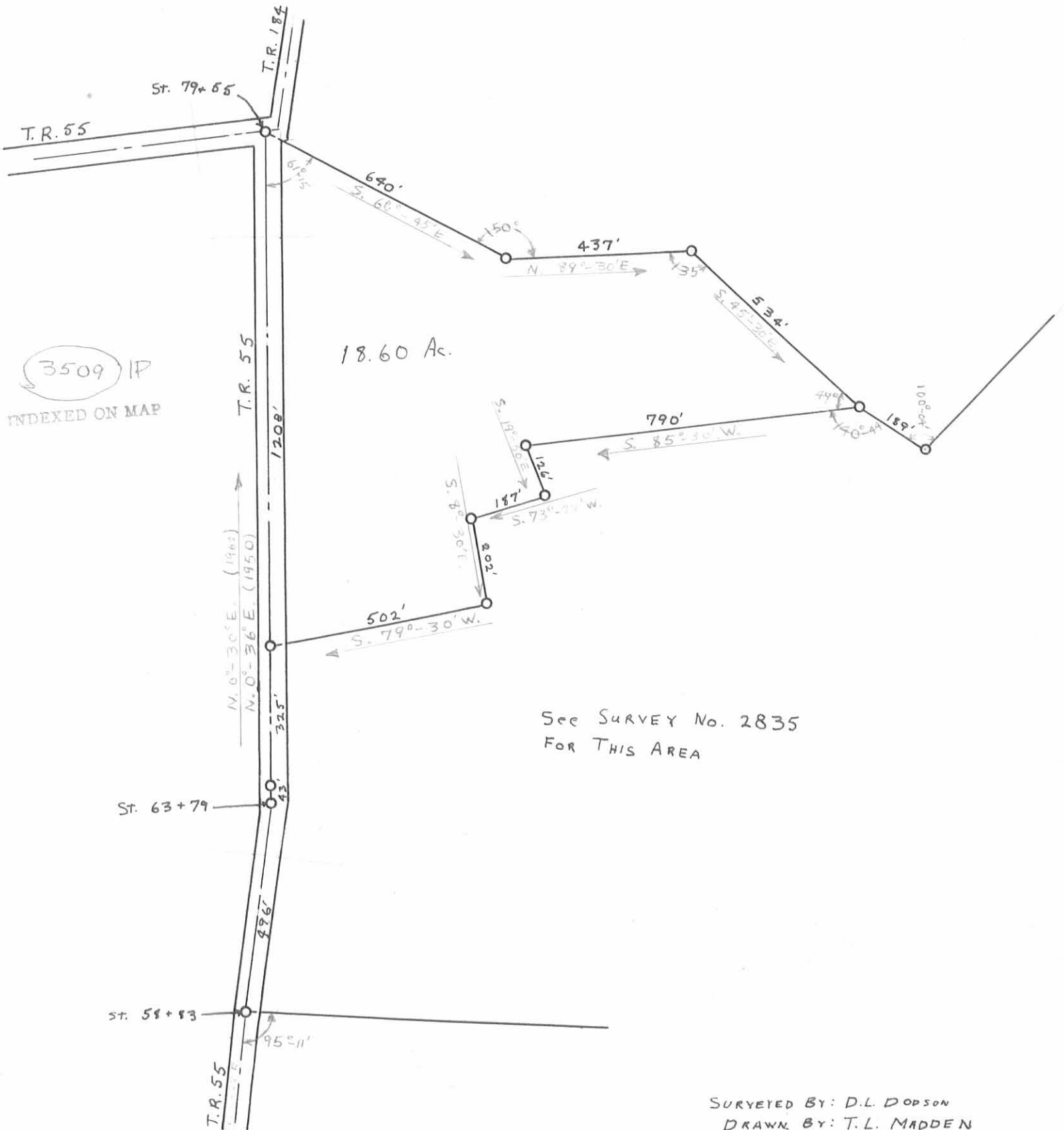
Beginning at a point in the north line of said V. M. S. 5738 at the intersection of County Highway No. 55 and County Highway 184 and at the northwest corner of Merlin K. Miller's 4.53 acre tract; thence with said Millers west line S. 60°-45' E. 640 feet to a post, thence with said Millers south line N. 89°-30' E. 437 feet to a post in the west line of said Miller's 40.28 acre tract; thence with said west line S. 45°-30' E. 534 feet to a post, a corner of W. Edward Gillespie's 147.66 acre tract, thence with said Gillespie's north line the following five courses, S. 85°-30' W. 790 feet to a post; thence S. 19°-50' E. 126 feet to a post; thence S. 73°-22' W. 187 feet to a pipe; thence S. 8°-30' E. 202 feet to a post; thence S. 79°-30' W. 502 feet to a pipe in the center of said County Highway 55; thence with the center line of said County Highway 55 N. 0°-30' E. 1208 feet to the place of beginning.

Containing 18.60 acres more or less.

3509
1D
INDEXED ON MAP

The above described tract being part of Joan Breeding's 92.07 acre tract.

GILLESPIE SURVEY
 JEFFERSON TWP.
 V. M. S. 5738



SURVEYED BY: D.L. DODSON
 DRAWN BY: T.L. MADDEN