

Lee Surveying and Mapping Co.



Farm Surveys • Lot Surveys • Topography • Subdivisions • Construction Layout

855 EAST SANDUSKY AVENUE
BELLEFONTAINE, OHIO 43311

(513) 593-5780

CLAYTON M. LEE, P.S.
JEFFREY I. LEE, P.S.

SIMS SURVEY (TRACT 'A')

Lying in V.M.S. 13593, Jefferson Township, Logan County, Ohio.

Being a part of that 8.08 acre (deed), 8.599 acre (actual) tract deeded and described in Volume 236, Page 258 of the Logan County Records of Deeds and more particularly described as follows:

Beginning at a railroad spike set on the center-line of County Highway No. 5, marking the southwest corner of said 8.599 acre tract and designated as being Station 67+61.5 in the Logan County Engineer's records. (Field Book 579, Page 40).

THENCE, with the center-line of said County Highway 5, N 32°-39' E, a distance of 251.24 feet to a railroad spike.

THENCE, S 39°-24'-20" E, a distance of 472.77 feet to an iron rod set on the east line of said 8.599 acres.

THENCE, with said east line, S 31°-45' W, a distance of 164.70 feet to a stone with drill hole, marking the southeast corner of said 8.599 acres.

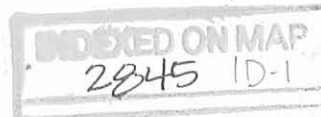
THENCE, with the south line of said 8.599 acres, N 49°-54'-30" W, a distance of 456.20 feet to the point of beginning. Containing 2.150 acres.

Last previous deed reference: Volume 236, Page 258.

Surveyed by:

Clayton M. Lee

Clayton M. Lee
Reg. Surveyor No. 6181
10-8-81



Lee Surveying and Mapping Co.



Farm Surveys • Lot Surveys • Topography • Subdivisions • Construction Layout

855 EAST SANDUSKY AVENUE
BELLEFONTAINE, OHIO 43111

(513) 593-5780

CLAYTON M. LEE, P.S.
JEFFREY I. LEE, P.S.

SIMS SURVEY (TRACT 'B')

Lying in V.M.S. 13593, Jefferson Township, Logan County, Ohio.

Being a part of that 8.08 acre (deed), 8.599 acre (actual) tract deeded and described in Volume 236, Page 258 of the Logan County Records of Deeds and more particularly described as follows:

Beginning at a railroad spike set on the center-line of County Highway No. 5, marking the southwest corner of said 8.599 acre tract and designated as being Station 67+61.5 in the Logan County Engineer's records. (Field Book 579, Page 40).

THENCE, with the center-line of said County Highway 5, N 32°-39' E, a distance of 251.24 feet to a railroad spike. (Station 70+12.74). THE TRUE POINT OF BEGINNING.

THENCE, continuing with the center-line of County Highway 5, N 32°-39' E, a distance of 171.26 feet to a railroad spike found marking an angle in said center-line (P.I. Station 71+84).

THENCE, continuing with said center-line, N 36°-57' E, a distance of 79.97 feet to a railroad spike.

THENCE, S 30°-16'-30" E, a distance of 474.93 feet to an iron rod set on the east line of said 8.599 acres.

THENCE, with said east line, S 24°-54'-05" W, a distance of 151.48 feet to an iron rod set at a fence angle.

THENCE, continuing with said east line, S 31°-45' W, a distance of 30.39 feet to an iron rod.

THENCE, N 39°-24'-20" W, a distance of 472.77 feet to the point of beginning. Containing 2.148 acres.

Last previous deed reference: Volume 236, Page 258.



Surveyed by:

Clayton M. Lee

Clayton M. Lee
Reg. Surveyor No. 6181
10-8-81

INDEXED ON MAP
2045 10-2

Lee Surveying and Mapping Co.



Farm Surveys • Lot Surveys • Topography • Subdivisions • Construction Layout

855 EAST SANDUSKY AVENUE
BELLEFONTAINE, OHIO 43311

(513) 593-5780

CLAYTON M. LEE, P.S.
JEFFREY I. LEE, P.S.

SIMS SURVEY (TRACT 'C')

Lying in V.M.S. 13593, Jefferson Township, Logan County, Ohio.

Being a part of that 8.08 acre (deed), 8.599 acre (actual) tract deeded and described in Volume 236, Page 258 of the Logan County Records of Deeds and more particularly described as follows:

Beginning at an iron rod found on the center-line of County Highway No. 5, marking the northwest corner of said 8.599 acres and designated as being Station 77+66.44 (Logan County Engineer's records: Field Book 579. Page 40).

THENCE, with said center-line, S 36°-57' W, a distance of 251.23 feet to a railroad spike (Station 75+15.21). THE TRUE POINT OF BEGINNING.

THENCE, S 24° 41'-30" E, a distance of 443.13 feet to an iron rod set on the east line of said 8.599 acres.


THENCE, with said east line, S 24°-54'-05" W, a distance of 229.67 feet to an iron rod.

THENCE, N 30°-16'-30" W, a distance of 474.93 feet to a railroad spike set on the center-line of County Highway 5.

THENCE, with said center-line, N 36°-57" E, a distance of 251.24 feet to the point of beginning. Containing 2.152 acres.

Last previous deed reference: Volume 236, Page 258.

Surveyed by:


Clayton M. Lee
Reg. Surveyor No. 6181
10-8-81

INDEXED ON MAP

2845 1D-3

Lee Surveying and Mapping Co.



Farm Surveys • Lot Surveys • Topography • Subdivisions • Construction Layout

855 EAST SANDUSKY AVENUE
BELLEFONTAINE, OHIO 43311

(513) 593-5780

CLAYTON M. LEE, P.S.
JEFFREY I. LEE, P.S.

SIMS SURVEY (TRACT 'D')

Lying in V.M.S. 13593, Jefferson Township, Logan County, Ohio.

Being a part of that 8.08 acre (deed), 8.599 acre (actual) tract deeded and described in Volume 236, Page 258 of the Logan County Records of Deeds and more particularly described as follows:

Beginning at an iron rod found on the center-line of County Highway No. 5, marking the northwest corner of said 8.599 acres and designated as being Station 77+66.44 (Logan County Engineer's records: Field Book 579, Page 40).

THENCE, with the north line of said 8.599 acres, S 27°-26'-40" E, a distance of 359.96 feet to an iron rod found marking the northeast corner of said 8.599 acres.

THENCE, with the east line of said 8.599 acres, S 24°-54'-05" W, a distance of 313.05 feet to an iron rod.

THENCE, N 24°-41'-30" W, a distance of 443.13 feet to a railroad spike set on the center-line of County Highway 5.

THENCE, with said center-line, N 36°-57' E, a distance of 251.23 feet to the point of beginning. Containing 2.149 acres.

Last previous deed reference: Volume 236, Page 258.

Surveyed by:

Clayton M. Lee

Clayton M. Lee
Reg. Surveyor No. 6181
10-8-81



Found Mon.
59+38, 8

Found RR Spike
STA. 71+84

CO. HWY. NO. 5

Found Iron

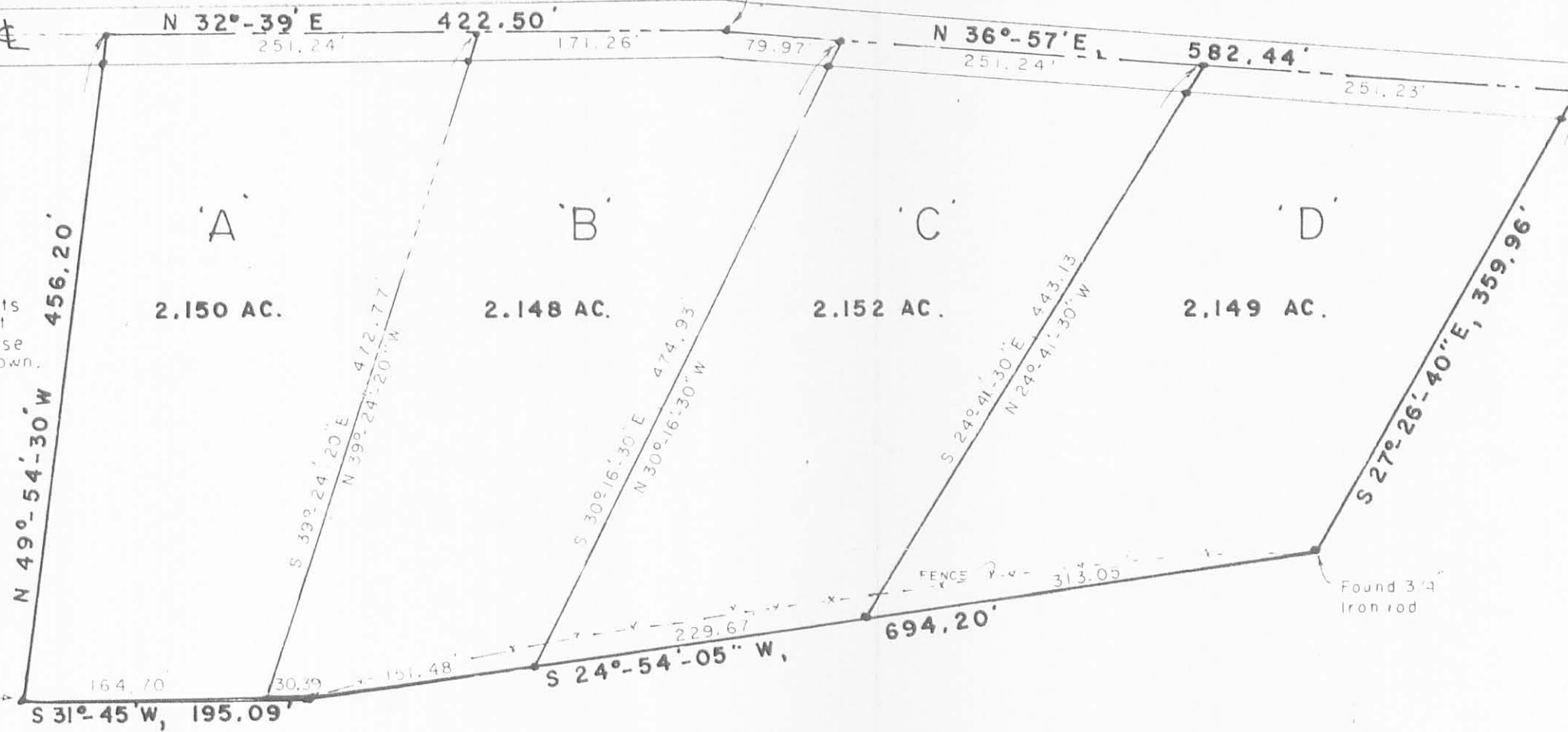
NOTE:
RR Spikes set at all points
on G road and 5/8" iron rods at
all other corners unless otherwise
shown.

Found
Stone with
drill hole

Found 3/4
Iron rod



SCALE 1"=100'



SUBDIVISION OF 8.599 ACRES (Deed calls for 8.08 Acres)
KERMIT & RUTH SIMS (Deed Vol. 236, Pg. 258)
V.M.S. 13593, JEFFERSON TOWNSHIP,
LOGAN COUNTY, OHIO

2845 IP

By: *Clayton M. Lee*
Clayton M. Lee
Reg. Surveyor 6181
10-8-81

INDEXED ON MAP

LEE SURVEYING & MAPPING CO.
855 E. Sandusky Ave.
BELLEFONTAINE, OHIO 43311
(513) 593-5780

TOLERANCES (EXCEPT AS NOTED)	REVISIONS			DRAWN BY <i>C.M.L.</i>	SCALE 1"=100'	MATERIAL
	NO.	DATE	BY			
DECIMAL	1					
±	2					
FRACTIONAL	3					
±	4			CHK'D	DATE	DRAWING NO. L-870-3
ANGULAR	5			TRACED	APP'D	
±						

1956

STANLY TENNANT DESCRIPTION

Being situated in Jefferson Township, Logan County, Ohio; and being a part of V. M. S. 13593.

Beginning at a point in the center of C. H. #5 which is known as Sta. 71 + 84 in the Logan County Engineers' F. B. 579, page 40. Thence following the center of C. H. #5 N 36° 57' E 583.0 feet to an iron; thence S 27° 15' E 361.3 feet to an iron, passing through an iron at 32.9 feet; thence S 24° 37' W 688.0 feet to an iron; thence S 32° 25' W 202.0 feet to a stone; thence N 49° 52' W 456.8 feet to the center of C. H. #5; passing through an iron at 426.5 feet; thence with the center of C. H. #5 N 32° 42' E 422.5 feet to the place of beginning.

Containing 8.08 acres more or less.



Shirk

2845 2D

INDEXED ON MAP

On Plat