

Rash Survey

Jefferson Township

Nov. 1951

88.31 Acres

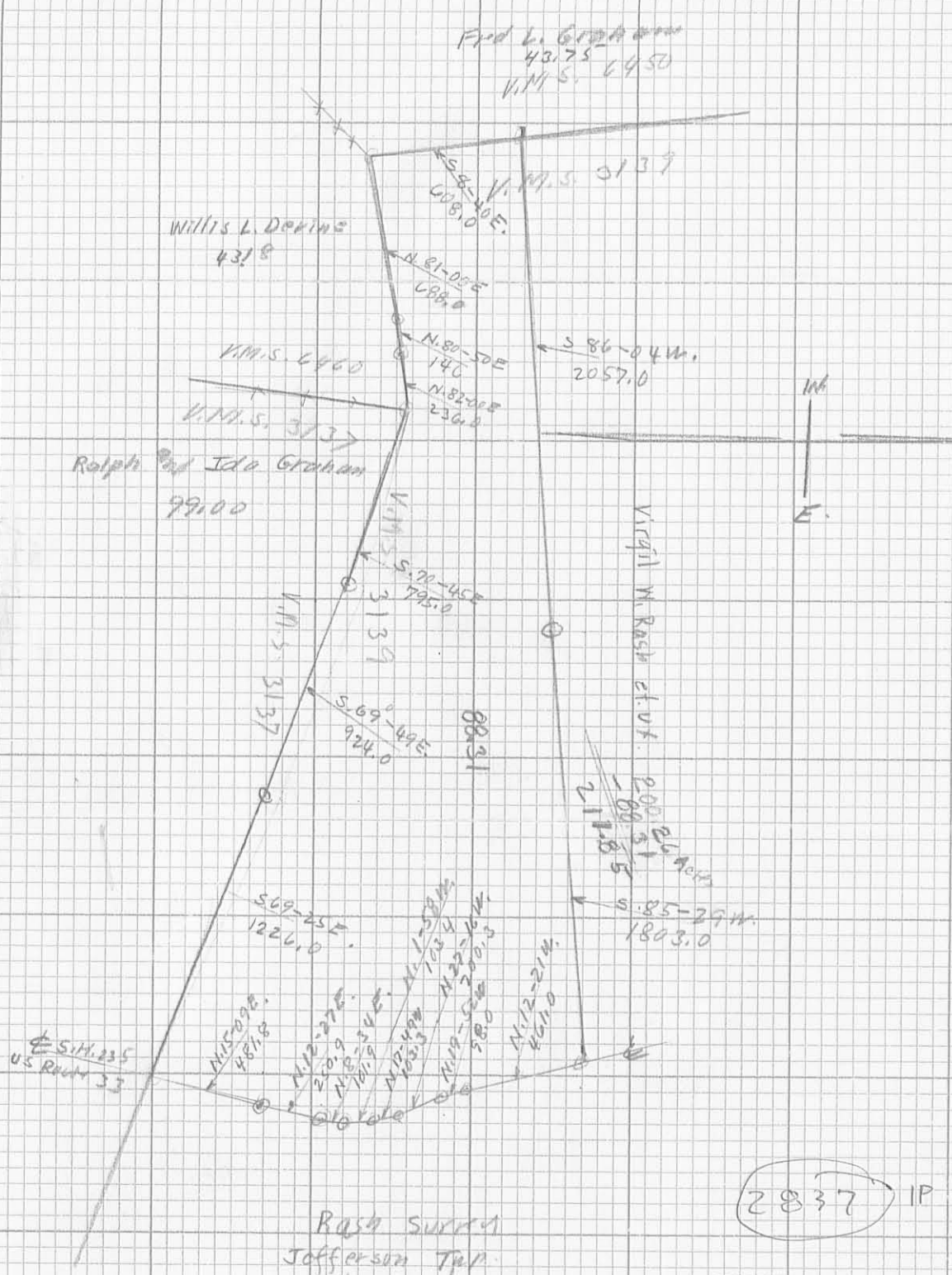
The following described land in Jefferson Township, Logan County Ohio and being in V.M.S. 3139 and being 88.31 acres off of the south side of a 200.18 acre tract and being more fully described as follows.

Beginning at a post at the N.W. corner of V.M.S. 3137 and also being the N.W. corner of Ralph and Ida Graham's 99.00 acre tract and the N.E. corner of Willis L. Devine's 43.18 acre tract thence with the north line of V.M.S. 3137 and the south line of V.M.S. 3139 and the north line of said Graham 99.00 acre tract the following three courses and distances S. 70° - $45'$ E. 795.0 feet ; S. 69° - $49'$ E. 924.0 feet ; S. 69° - $25'$ E. 1226.0 feet to a point in the center of State Highway Number 235 (U.S. Route Number 33) thence with the center line of State Highway Number 235 the following eight courses and distances N. 15° - $09'$ E. 481.8 feet ; N. 12° - $27'$ E. 250.9 feet ; N. 8° - $34'$ E. 101.9 feet ; N. 1° - $58'$ W. 103.4 feet ; N. 17° - $49'$ E. 103.3 feet ; N. 27° - $16'$ W. 200.3 feet ; N. 19° - $52'$ W. 98.0 feet ; N. 12° - $21'$ W. 461.0 feet thence along the north side of the 88.31 acres the following two courses and distances S. 85° - $29'$ W. 1803.0 feet ; S. 86° - $04'$ W. 2057.0 feet to a point in the west line of V.M.S. 3139 and the east line of V.M.S. 6450 and also being in the east line of Fred L. Graham's 43.75 acre tract thence with the east side of said Fred Graham tract and also with the west line of V.M.S. 3139 S. 8° - $40'$ E. 608.0 feet to a post at the S.W. corner of V.M.S. 3139 and in the North line of Willis L. Devine's 43.18 acre tract thence with the north line of said Devine 43.18 acre tract and with the south line of V.M.S. 3139 and also with the North line of V.M.S. 6450 the following three courses and distances N. 81° - $00'$ E. ^{608.0 feet} N. 80° - $50'$ E. 146.0 feet to a large post thence N. 82° - $00'$ E. 236.0 feet to the place of beginning said tract containing 88.31 acres.

cc
E.K. Core,
Logan County Engineer.

2837 ID

INDEXED ON MAP



RASH SURVEY
 Jefferson Twp.
 1" = 660
 NOV. 1951

INDEXED ON MAP