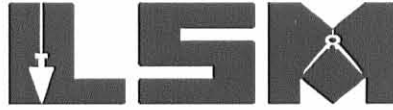


REC'D 9-11-03 SMY OK

# Lee Surveying and Mapping Co., Inc.

Land Surveys • Topography • Subdivisions • Construction Layout

117 N. Madriver St.  
Bellefontaine OH 43311



Phone: (937) 593-7335  
Fax: (937) 593-7444

## APPLESEED RIDGE GIRL SCOUT COUNCIL, INC. AND FORT AMANDA GIRL SCOUT COUNCIL, INC. 102.2 ACRE EASEMENT

Lying in Virginia Military Surveys 3325 and 3436, Jefferson Township, Logan County, Ohio.

Being an easement over the Appleseed Ridge Girl Scout Council, Inc. 32.0 acre tract (Volume 292, Page 256, third tract), original 6.0 acre tract (Volume 294, Page 524) and original 124.5 acre tract (Volume 295, Page 667) and over the Fort Amanda Girl Scout Council, Inc. 56.08 acre tract (Volume 256, Page 326) and 24.54 acre tract (Volume 256, Page 328), all on file in the Logan County Records of Deeds and being more particularly described as follows:

Beginning at a point on the south right-of-way of Township Road 127 (40 feet wide) at the east right-of-way of Township Road 126 (40 feet wide).

THENCE, with the south right-of-way of Township Road 127, N 85°-00'-00" E, a distance of 1828.52 feet to a point at the TRUE POINT OF BEGINNING.

THENCE, with the south right-of-way of Township Road 127, N 85°-00'-00" E, a distance of 1286.48 feet to a point.

THENCE, with the west line of the Regular Baptist Church 0.5 acre tract (Vol. 37, Pg. 551), S 5°-00'-00" E, a distance of 112.0 feet to a point.

THENCE, with the south line of the Day Cemetery 0.5 acre tract, N 85°-00'-00" E, a distance of 165.0 feet to a point.

THENCE, with the west line of the David L. Kramer 42.15 acre tract (Vol. 398, Pg. 434), S 5°-00'-00" E, a distance of 1518.0 feet to a point on the south line of Virginia Military Survey 3325.

THENCE, with the south line of Virginia Military Survey 3325 and the south line of the said 42.15 acre tract, N 85°-00'-00" E, a distance of 553.54 feet to a point.

THENCE, with the west line of the Tonya Kathleen Gwynn original 56.22 acre tract (Vol. 403, Pg. 965), the west lines of the Curtis E. Smith 1.06 acre tract (Vol. 407, Pg. 357) and 2.00 acre tract (O.R. 142, Pg. 342), and the west lines of the Mark E. Brown original 0.75 acre and 0.61 acre tracts (O.R. 87, Pg. 43), S 6°-15'-00" E, a distance of 2661.05 feet to a point on the north right-of-way of Ohio Route 540 (60 feet wide).

THENCE, with the north right-of-way of Ohio Route 540, S 53°-55'-00" W, a distance of 751.48 feet to a point.

THENCE, with the north right-of-way of Ohio Route 540, S 76°-15'-00" W, a distance of 130.96 feet to a point.

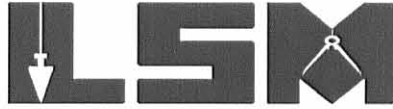
THENCE, N 6°-15'-00" W, a distance of 640.82 feet to a point.



# Lee Surveying and Mapping Co., Inc.

Land Surveys • Topography • Subdivisions • Construction Layout

117 N. Madriver St.  
Bellefontaine OH 43311



Phone: (937) 593-7335  
Fax: (937) 593-7444

THENCE, N 87°-08'-35" W, a distance of 250.0 feet to a point.

THENCE, N 9°-13'-40" W, a distance of 2400.0 feet to a point on the south line of Virginia Military Survey 3325.

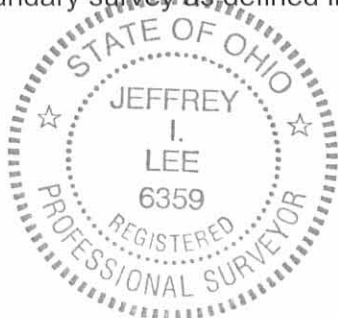
THENCE, with the south line of Virginia Military Survey 3325, N 85°-00'-00" E, a distance of 250.0 feet to a point.

THENCE, N 39°-02'-57" W, a distance of 1967.27 feet to the point of beginning.

Containing 102.2 acres, more or less.

The basis for bearings is the south right-of-way of Township Road 127, being N 85°-00'-00" E, and all other bearings are from angles and distances are from deed and survey record compiled by Lee Surveying and Mapping Co., Inc. on July 9, 2003.

This description is for easement purposes, only, and may not be used to transfer this property. It is not a boundary survey as defined in 4733-37 of the Ohio Administrative Code.



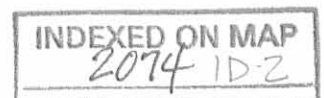
ORIGINAL STAMP IN GREEN

Description prepared by:

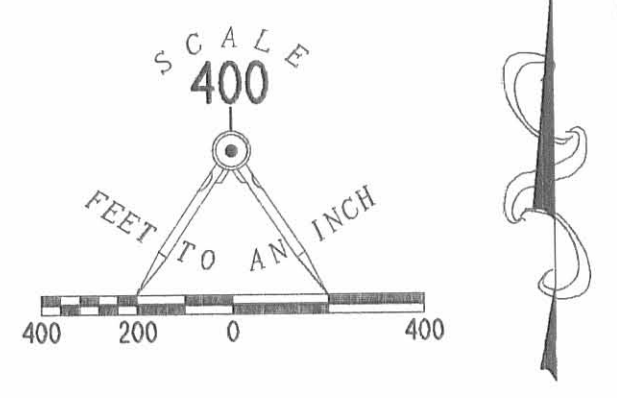
A handwritten signature in black ink, appearing to read 'Jeffrey I. Lee'.

Jeffrey I. Lee  
Professional Surveyor 6359  
July 9, 2003

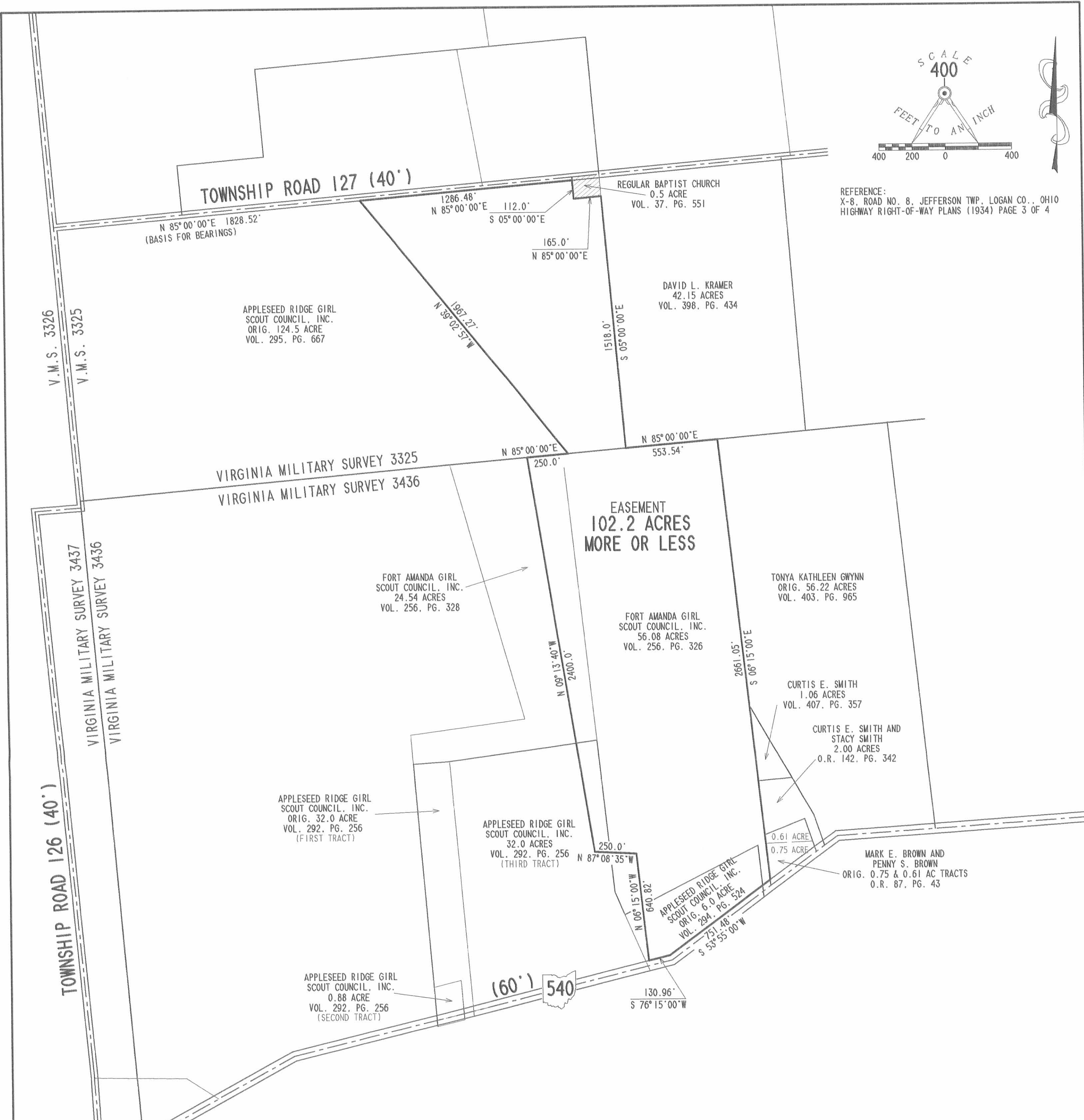
L-3552



REC'D 9-11-03 SWJ/OK



REFERENCE:  
X-8, ROAD NO. 8, JEFFERSON TWP., LOGAN CO., OHIO  
HIGHWAY RIGHT-OF-WAY PLANS (1934) PAGE 3 OF 4



MAP OF AN EASEMENT OVER THE  
APPLESEED RIDGE GIRL SCOUT COUNCIL, INC.  
32.0 ACRE TRACT  
VOLUME 292, PAGE 256 (THIRD TRACT)  
ORIGINAL 6.0 ACRE TRACT  
VOLUME 294, PAGE 524  
AND ORIGINAL 124.5 ACRE TRACT  
VOLUME 295, PAGE 667  
AND OVER THE FORT AMANDA GIRL SCOUT COUNCIL, INC.  
56.08 ACRE TRACT  
VOLUME 256, PAGE 326 AND  
24.54 ACRE TRACT  
VOLUME 256, PAGE 328  
VIRGINIA MILITARY SURVEY 3325 AND  
VIRGINIA MILITARY SURVEY 3436  
JEFFERSON TOWNSHIP  
LOGAN COUNTY, OHIO

THIS IS NOT A BOUNDARY SURVEY AS  
DEFINED IN 4733-37 OF THE OHIO  
ADMINISTRATIVE CODE.

COMPILED FROM DEED AND  
SURVEY RECORD BY:



JEFFREY I. LEE  
PROFESSIONAL SURVEYOR 6359  
JULY 9, 2003

COPYRIGHT 2003 BY:  
LEE SURVEYING & MAPPING CO., INC.  
117 North Madriver Street  
BELLEFONTAINE, OHIO 43311  
(937) 593-7335

ORIGINAL STAMP IN GREEN D 411 GIRLSCT2 L-3552-2

INDEXED ON MAP  
2074 1P

GOFF SURVEY

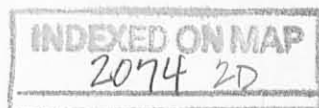
JEFFERSON TOWNSHIP

The following described real estate situated in the Township of Jefferson, County of Logan, State of Ohio, and being part of Virginia Military Survey 3436 and more particularly described as follows:

Beginning at an iron pin in the center of State Route 540 at station 96+03.6 as shown in the County Engineers' field book #588, page 17, said iron pin being at the Southwest corner of a 0.75 acre tract presently belonging to Alfred N. Routt. Thence with the center of said road S. 54°-01' W. 105.3 feet to an iron pin; thence N. 35°-59' W. 237.3 feet to an iron pin in the South line of Martin M. Yore's 56.08 acre tract; thence with said Yore's South line N. 60°-18' E. 233.7 feet to an iron pin at the Northwest corner of said 0.75 acre tract; thence with the West line of said 0.75 acre tract S. 5°-02' E. 247.3 feet to the place of beginning.

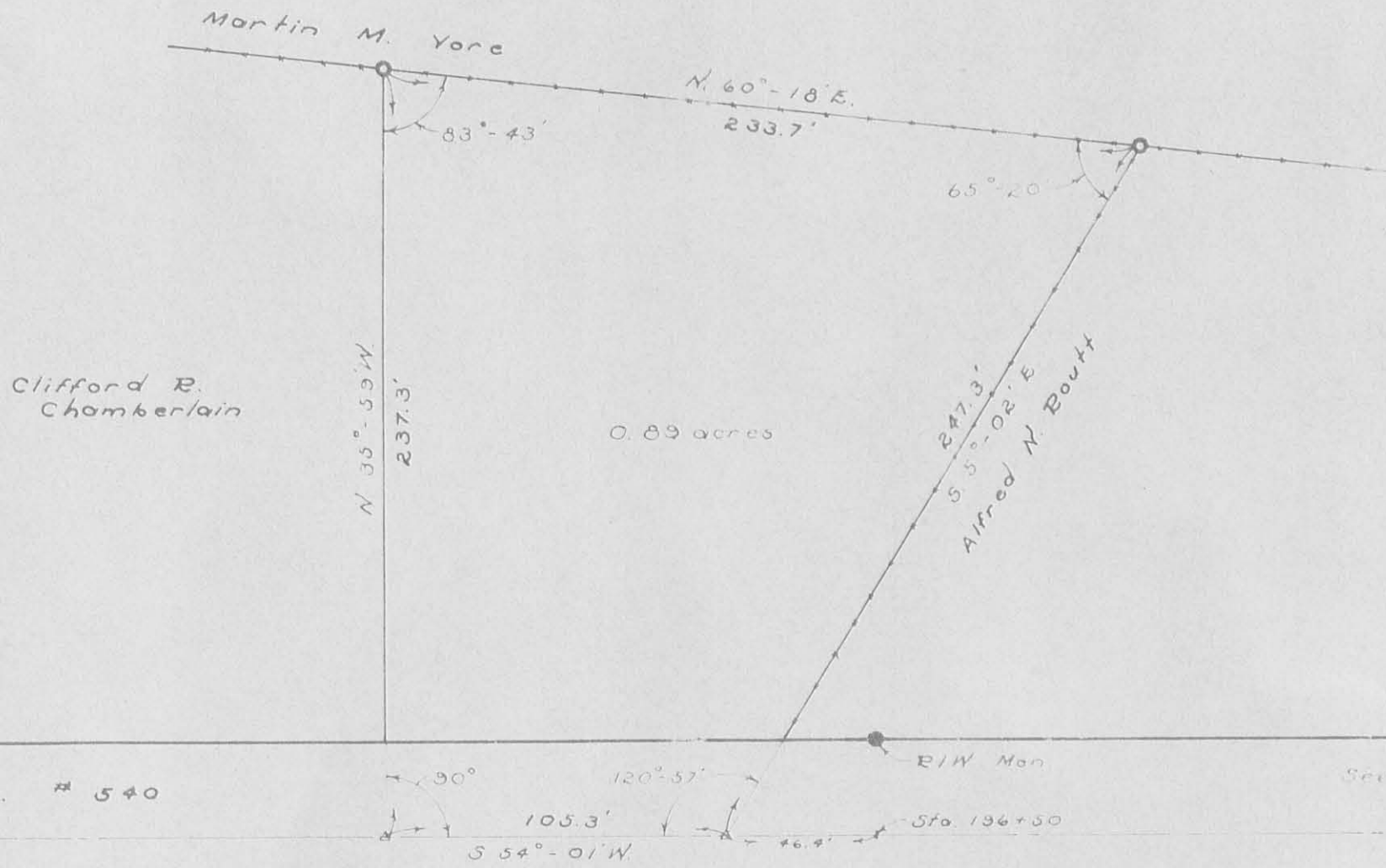
Containing 0.89 acres.

The above described tract being a part of the 6.00 acre tract belonging to C. R. Chamberlain.





PLAT OF  
 GOFF SURVEY  
 JEFFERSON TOWNSHIP  
 LOGAN COUNTY, OHIO  
 V.M.S. 3436



2094  
 2P

○ = Iron Pipe  
 Δ = Iron Pin

SCALE 1" = 50'

Surveyed by D.L. Dodson Surveyor-in-Training  
 Oct. 18, 1952

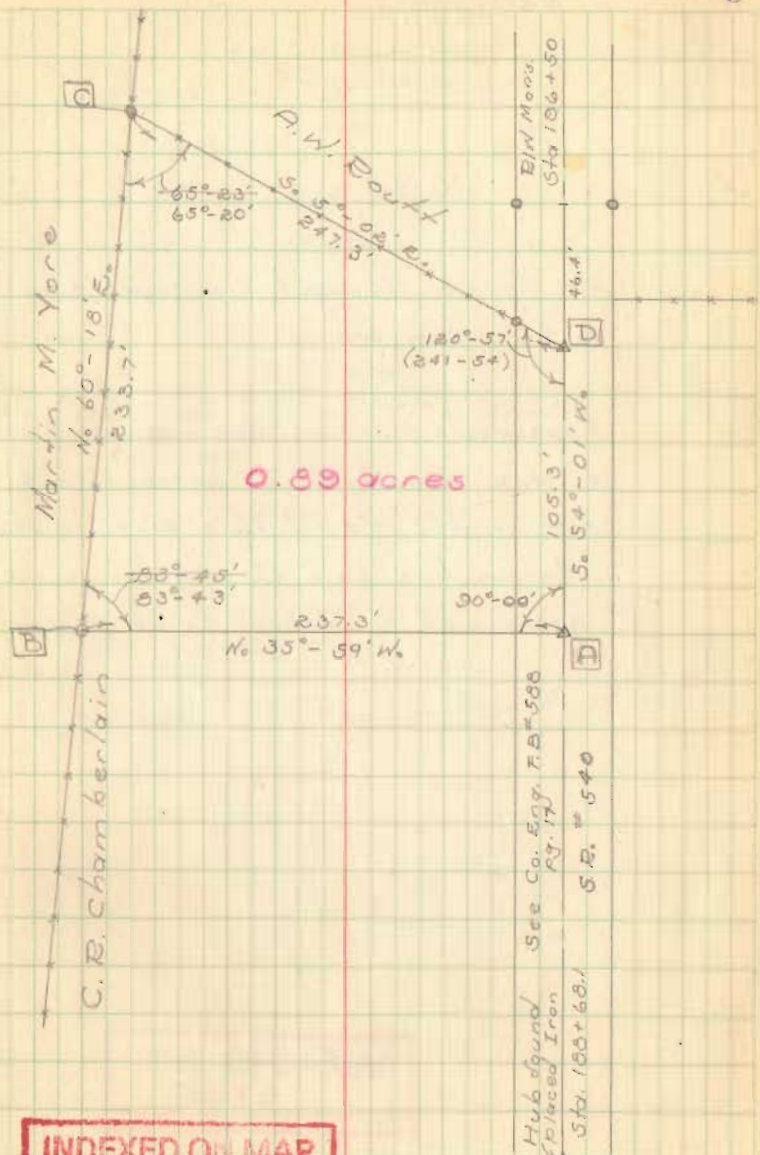
Goff Survey  
 Jefferson Twp  
 V.M.S. 3436

- A = □ head bolt - 6" long
- B = ½" pipe
- C = ½" pipe North side of cor. post
- D = □ head bolt - 6" long

D. D. Dodson  
 G. W. Wilgus

Oct. 18, 1932  
 65°

5




0.89 acres

INDEXED ON MAP  
 2074

11-26-13

# Lee Surveying and Mapping Co., Inc.

 **APPROVED** Land Surveys • Topography • Subdivisions • Construction Layout

117 N. Madriver St.  
Bellefontaine OH 43311



Phone: (937) 593-7335  
Fax: (937) 593-7444  
surveys@lsminc.us

## APPLESEED RIDGE GIRL SCOUT COUNCIL, INC. 338.522 ACRES

Lying in Virginia Military Surveys 3325, 3436 and 3437, Jefferson Township, Logan County, Ohio.

Being all of the Fort Amanda Girl Scout Council, Inc., 20-3/4 acre tract, 162.5 acre tract, 0.59 acre tract and 0.64 acre tract as deeded and described in Volume 256, Page 322, Tracts I, II, III and IV, the 56.08 acre tract as deeded and described in Volume 256, Page 326, the 24.54 acre tract as deeded and described in Volume 256, Page 328 and all of the Appleseed Ridge Girl Scout Council, Inc., 7.46 acre tract, 0.88 acre tract and 32 acre tract as deeded and described in Volume 292, Page 256, the 8.08 acre tract as deeded and described in Volume 294, Page 524, the 124.5 acre tract as deeded and described in Volume 295, Page 667, the 2.5 acre tract as deeded and described in Volume 325, Page 706 and the 5.40 acre tract as deeded and described in Volume 336, Page 121 of the Logan County Records of Deeds lying outside of the existing conservation easement as deeded and described in Official Record 701, Page 478 and being more particularly described as follows:

Beginning on a 1/2 inch iron rod found on the intersection of the center-lines of Township Road 126 (Station 0+00, Logan County Engineer's Field Book 710, Page 14) and Ohio Route 540 (Station 151+54, Logan County Engineer's Field Book 588, Page 42, Plan X-8A).

THENCE, with the center-line of Township Road 126 (40 feet wide), the following four courses:

N 04°-15'-11"W, a distance of 590.68 feet to a 1 inch iron pipe found (Station 5+90.63, Logan County Engineer's Field Book 710, Page 14).

N 05°-56'-35"W, a distance of 3390.24 feet to a 3/4 inch iron pipe found (Station 39+80.85, Logan County Engineer's Field Book 710, Page 15).

N 85°-27'-13"E, a distance of 276.76 feet to a 3/4 inch iron pipe found (Station 42+57.73, Logan County Engineer's Field Book 710, Page 15) on the southwest corner of Virginia Military Survey 3325, the northwest corner of Virginia Military Survey 3436, the northeast corner of Virginia Military Survey 3437 and the southeast corner of Virginia Military Survey 3326.

N 05°-33'-35"W, with the west line of Virginia Military Survey 3325, a distance of 1688.74 feet to a MAG nail set on the intersection of Township Road 127 (Station 59+46.46, Logan County Engineer's Field Book 710, Page 16), passing a railroad spike found (Station 52+21.18, Logan County Engineer's Field Book 710, Page 16) at 963.46 feet.

THENCE, with the center-line of Township Road 127 (40 feet wide), the following two courses:

N 83°-48'-00"E, a distance of 2604.05 feet to a 3/4 inch iron rod found, passing a MAG nails set at 798.31 feet and 1510.84 feet.

N 84°-32'-28"E, a distance of 542.88 feet to a MAG nail set.

INDEXED ON MAP  
2074 3D-1



# Lee Surveying and Mapping Co., Inc.

Land Surveys • Topography • Subdivisions • Construction Layout

117 N. Madriver St.  
Bellefontaine OH 43311



Phone: (937) 593-7335  
Fax: (937) 593-7444  
surveys@lsminc.us

THENCE, with the west line of the Regular Baptist Church known by the name of Mill Creek Church (Day Cemetery), one half acre (Vol. 37, Pg. 551), S 06°-29'-15"E, a distance of 20.00 feet to a 5/8 inch iron rod set on the south right-of-way of Township Road 127.

THENCE, with the south right-of-way of Township Road 127, the following two courses:

S 84°-32'-28"W, a distance of 543.11 feet to a point.

S 83°-48'-00"W, a distance of 755.62 feet to a 5/8 inch iron rod set.

THENCE, with the lines of the conservation easement, the following five courses:

S 37°-47'-04"E, a distance of 1967.27 feet to a point.

S 83°-56'-35"W, a distance of 250.00 feet to a point.

S 11°-08'-00"E, a distance of 2388.60 feet to a point.

S 87°-53'-17"E, a distance of 250.00 feet to a point.

S 06°-59'-42"E, a distance of 640.82 feet to a 5/8 inch iron rod set on the north right-of-way of Ohio Route 540.

THENCE, with the north right-of-way of Ohio Route 540, the following two courses:

N 75°-30'-18"E, a distance of 130.96 feet to a point.

N 53°-10'-55"E, a distance of 746.34 feet to a 5/8 inch iron rod set.

THENCE, with the west line of the Mark E. Brown 1.28 acre tract (O.R. 679, Pg. 897), S 07°-11'-56"E, a distance of 34.51 feet to a railroad spike found on the center-line of Ohio Route 540.

THENCE, with the center-line of Ohio Route 540 (60 feet wide), the following two courses:

S 53°-10'-55"W, a distance of 735.20 feet to a railroad spike found (Station 188+68.11, Logan County Engineer's Field Book 588, Page 17, Plan X-8A).

S 75°-30'-18"W, a distance of 152.82 feet to a MAG nail set.

THENCE, within the right-of-way of Ohio Route 540 and within the Marguriete Savage 0.992 acre tract (O.R. 691, Pg. 75), S 24°-21'-16"E, a distance of 19.72 feet to a 1 inch iron bar found.

THENCE, within the right-of-way of Ohio Route 540 and within the said 0.992 acre tract, the William J. Savage 0.30 acre tract (O.R. 765, Pg. 254), the Betty Savage 0.30 acre tract (O.R. 317, Pg. 162), the Carol Ann Savage 1.200 acre tract (O.R. 828, Pg. 607, Tract I), the Bill Savage 3/4 acre tract (O.R. 337, Pg. 545), the Floyd K. "Mishikin Nogkwa" Shroud, 6.000 acre tract (O.R. 482, Pg. 561), the David M. Holland 5.500 acre tract (O.R. 474, Pg. 473) and 1.279 acre tract (O.R. 767, Pg. 689) and the Shawnee Nation United Reminant Band Land Fund, Inc., 84.045 acre tract



# Lee Surveying and Mapping Co., Inc.

Land Surveys • Topography • Subdivisions • Construction Layout

117 N. Madriver St.  
Bellefontaine OH 43311



Phone: (937) 593-7335  
Fax: (937) 593-7444  
surveys@lsminc.us

(O.R. 922, Pg. 287), S 75°-58'-26"W, a distance of 1338.37 feet to a MAG nail set.

THENCE, within the right-of-way of Ohio Route 540 and the said 84.045 acre tract, N 05°-53'-31"W, a distance of 8.58 feet to a MAG nail set on the center-line of Ohio Route 540.

THENCE, with the center-line of Ohio Route 540, the following three courses:

S 75°-30'-18"W, a distance of 858.11 feet to a MAG nail found (Station 165 + 21.6, Logan County Engineer's Field Book 588, Page 16, Plan X-8A).

S 61°-41'-19"W, a distance of 1094.85 feet to a railroad spike found (Station 154 + 25.3, Logan County Engineer's Field Book 588, Page 15, Plan X-8A).

S 50°-27'-47"W, a distance of 271.12 feet to the point of beginning.

Containing 338.522 acres, of which 7.635 acres are within the highway rights-of-way.

Property is subject to any and all previous easements and rights-of-way of record.

The basis for bearings is the center-line of Township Road 127 east of the intersection of Township Road 126, being N 83°-48'-00"E, and all other bearings are from angles and distances measured in a field survey by Lee Surveying and Mapping Co., Inc. on November 5, 2013.

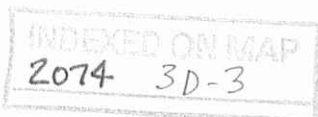


ORIGINAL STAMP IN GREEN

Description prepared by:

William K. Bruce  
Professional Surveyor 7437  
November 8, 2013

35520913



11-26-13

# Lee Surveying and Mapping Co., Inc.



Land Surveys • Topography • Subdivisions • Construction Layout

117 N. Madriver St.  
Bellefontaine OH 43311



Phone: (937) 593-7335  
Fax: (937) 593-7444  
surveys@lsminc.us

## APPLESEED RIDGE GIRL SCOUT COUNCIL, INC. 7.274 ACRES

Lying in Virginia Military Survey 3325, Jefferson Township, Logan County, Ohio.

Being all of the remainder of the Appleseed Ridge Girl Scout Council, Inc., original 27.76 acre tract as deeded and described in Volume 312, Page 414 of the Logan County Records of Deeds and being more particularly described as follows:

Commencing on a MAG nail set on the west line of Virginia Military Survey 3325 on the intersection of the center-lines of Township Road 126 (Station 59 + 46.46, Logan County Engineer's Field Book 710, Page 16) and Township Road 127.

THENCE, with the center-line of Township Road 127 (40 feet wide), N 83°-48'-00"E, a distance of 798.31 feet to a MAG nail set at the TRUE POINT OF BEGINNING.

THENCE, with the lines of the Black Hoof, LLC, 218.810 acre tract (O.R. 575, Pg. 232), the following four courses:

N 06°-21'-36"W, a distance of 276.32 feet to a 5/8 inch iron rod found, passing a 5/8 inch iron rod set at 20.00 feet.

N 81°-41'-18"E, a distance of 512.08 feet to a 5/8 inch iron rod found.

N 05°-07'-13"W, a distance of 534.06 feet to a 5/8 inch iron rod found.

N 84°-31'-59"E, a distance of 207.30 feet to a 5/8 inch iron rod found.

THENCE, with the west line of the Dennis R. Rose 20.029 acre tract, (O.R. 610, Pg. 305), S 05°-06'-22"E, a distance of 826.65 feet to a MAG nail set on the center-line of Township Road 127, passing a 5/8 inch iron rod set at 806.65 feet.

THENCE, with the center-line of Township Road 127, S 83°-48'-00"W, a distance of 712.53 feet to the point of beginning.

Containing 7.274 acres, of which 0.327 acre is within the highway right-of-way.

Property is subject to any and all previous easements and rights-of-way of record.

The basis for bearings is the center-line of Township Road 127 east of the intersection of Township Road 126, being N 83°-48'-00"E, and all other bearings are from angles and distances measured in a field survey by Lee Surveying and Mapping Co., Inc. on November 5, 2013.

Description prepared by:

William K. Bruce  
Professional Surveyor 7437  
November 8, 2013



INDEXED ON MAP  
2074 3D-4 35520913

11-26-13

# Lee Surveying and Mapping Co., Inc.



Land Surveys • Topography • Subdivisions • Construction Layout

117 N. Madriver St.  
Bellefontaine OH 43311



Phone: (937) 593-7335  
Fax: (937) 593-7444  
surveys@lsminc.us

## FORT AMANDA GIRL SCOUT COUNCIL, INC. AND APPLESEED RIDGE GIRL SCOUT COUNCIL, INC. 443.933 ACRES

Lying in Virginia Military Surveys 3325, 3436 and 3437, Jefferson Township, Logan County, Ohio.

Being all of the Fort Amanda Girl Scout Council, Inc., 20-3/4 acre tract, 162.5 acre tract, 0.59 acre tract and 0.64 acre tract as deeded and described in Volume 256, Page 322, Tracts I, II, III and IV, the 56.08 acre tract as deeded and described in Volume 256, Page 326, the 24.54 acre tract as deeded and described in Volume 256, Page 328 and a 50 feet wide strip of land as deeded and described in Volume 265, Page 92 and all of the Appleseed Ridge Girl Scout Council, Inc., 7.46 acre tract, 0.88 acre tract and 32 acre tract as deeded and described in Volume 292, Page 256, the 8.08 acre tract as deeded and described in Volume 294, Page 524, the 124.5 acre tract as deeded and described in Volume 295, Page 667, the 2.5 acre tract as deeded and described in Volume 325, Page 706 and the 5.40 acre tract as deeded and described in Volume 336, Page 121 of the Logan County Records of Deeds and being more particularly described as follows:

Beginning on a 1/2 inch iron rod found on the intersection of the center-lines of Township Road 126 (Station 0+00, Logan County Engineer's Field Book 710, Page 14) and Ohio Route 540 (Station 151+54, Logan County Engineer's Field Book 588, Page 42, Plan X-8A).

THENCE, with the center-line of Township Road 126 (40 feet wide), the following four courses:

N 04°-15'-11"W, a distance of 590.68 feet to a 1 inch iron pipe found (Station 5+90.63, Logan County Engineer's Field Book 710, Page 14).

N 05°-56'-35"W, a distance of 3390.24 feet to a 3/4 inch iron pipe found (Station 39+80.85, Logan County Engineer's Field Book 710, Page 15).

N 85°-27'-13"E, a distance of 276.76 feet to a 3/4 inch iron pipe found (Station 42+57.73, Logan County Engineer's Field Book 710, Page 15) on the southwest corner of Virginia Military Survey 3325, the northwest corner of Virginia Military Survey 3436, the northeast corner of Virginia Military Survey 3437 and the southeast corner of Virginia Military Survey 3326.

N 05°-33'-35"W, with the west line of Virginia Military Survey 3325, a distance of 1688.74 feet to a MAG nail set on the intersection of the center-line of Township Road 127 (Station 59+46.46, Logan County Engineer's Field Book 710, Page 16), passing a railroad spike found (Station 52+21.18, Logan County Engineer's Field Book 710, Page 16) at 963.46 feet.

THENCE, with the center-line of Township Road 127 (40 feet wide), the following two courses:

N 83°-48'-00"E, a distance of 2604.05 feet to a 3/4 inch iron pipe found, passing a MAG nails set at 798.31 feet and 1510.84 feet.

N 84°-32'-28"E, a distance of 542.88 feet to a MAG nail set.



# Lee Surveying and Mapping Co., Inc.

Land Surveys • Topography • Subdivisions • Construction Layout

117 N. Madriver St.  
Bellefontaine OH 43311



Phone: (937) 593-7335  
Fax: (937) 593-7444  
surveys@lsminc.us

THENCE, with the lines of the Regular Baptist Church known by the name of Mill Creek Church (Day Cemetery), one half acre (Vol. 37, Pg. 551), the following two courses:

S 06°-29'-15"E, a distance of 132.00 feet to a 5/8 inch iron rod set, passing a 5/8 inch iron rod set at 20.00 feet.

N 84°-32'-28"E, a distance of 165.00 feet to a 5/8 inch iron rod set.

THENCE, with the lines of the Dennis L. Kramer, etal, 42.15 acre tract (O.R. 807, Pg. 858, Parcel I), the following two courses:

S 06°-29'-15"E, a distance of 1555.82 feet to a steel fence post found.

N 86°-38'-04"E, a distance of 496.60 feet to a 5/8 inch iron rod set in the root of a 24 inch tree.

THENCE, with the west lines of the Tonya Kathleen Gwynn 56.20 acre tract (Vol. 403, Pg. 965, Tract I), the Curtis E. Smith 1.06 acre tract (Vol. 407, Pg. 357) and 2.00 acre tract (O.R. 142, Pg. 342) and the Mark E. Brown 1.28 acre tract (O.R. 679, Pg. 897), S 07°-11'-56"E, a distance of 2666.26 feet to a railroad spike found on the center-line of Ohio Route 540, passing a 5/8 inch iron rod set at 2631.75 feet.

THENCE, with the center-line of Ohio Route 540 (60 feet wide), the following two courses:

S 53°-10'-55"W, a distance of 735.20 feet to a railroad spike found (Station 188 + 68.11, Logan County Engineer's Field Book 588, Page 17, Plan X-8A).

S 75°-30'-18"W, a distance of 152.82 feet to a MAG nail set.

THENCE, within the right-of-way of Ohio Route 540 and within the Marguriete Savage 0.992 acre tract (O.R. 691, Pg. 75), S 24°-21'-16"E, a distance of 19.72 feet to a 1 inch iron bar found.

THENCE, within the right-of-way of Ohio Route 540 and within the said 0.992 acre tract, the William J. Savage 0.30 acre tract (O.R. 765, Pg. 254), the Betty Savage 0.30 acre tract (O.R. 317, Pg. 162), the Carol Ann Savage 1.200 acre tract (O.R. 828, Pg. 607, Tract I), the Bill Savage ¼ acre tract (O.R. 337, Pg. 545), the Floyd K. "Mishikin Nogkwa" Shrout, 6.000 acre tract (O.R. 482, Pg. 561), the David M. Holland 5.500 acre tract (O.R. 474, Pg. 473) and 1.279 acre tract (O.R. 767, Pg. 689) and the Shawnee Nation United Reminant Band Land Fund, Inc., 84.045 acre tract (O.R. 922, Pg. 287), S 75°-58'-26"W, a distance of 1338.37 feet to a MAG nail set.

THENCE, within the right-of-way of Ohio Route 540 and the said 84.045 acre tract, N 05°-53'-31"W, a distance of 8.58 feet to a MAG nail set on the center-line of Ohio Route 540.

THENCE, with the center-line of Ohio Route 540, the following three courses:

S 75°-30'-18"W, a distance of 858.11 feet to a MAG nail found (Station 165 + 21.6, Logan County Engineer's Field Book 588, Page 16, Plan X-8A).



# Lee Surveying and Mapping Co., Inc.

Land Surveys • Topography • Subdivisions • Construction Layout

117 N. Madriver St.  
Bellefontaine OH 43311



Phone: (937) 593-7335  
Fax: (937) 593-7444  
surveys@lsminc.us

S 61°-41'-19"W, a distance of 1094.85 feet to a railroad spike found (Station 154 + 25.3, Logan County Engineer's Field Book 588, Page 15, Plan X-8A).

S 50°-27'-47"W, a distance of 271.12 feet to the point of beginning.

Containing 443.933 acres, of which 7.635 acres are within the highway rights-of-way. There are 128.660 acres within Virginia Military Survey 3325, 296.566 acres within Virginia Military Survey 3436 and 18.707 acres within Virginia Military Survey 3437.

Property is subject to any and all previous easements and rights-of-way of record.

The basis for bearings is the center-line of Township Road 127 east of the intersection of Township Road 126, being N 83°-48'-00"E, and all other bearings are from angles and distances measured in a field survey by Lee Surveying and Mapping Co., Inc. on November 5, 2013.



ORIGINAL STAMP IN GREEN

Description prepared by:

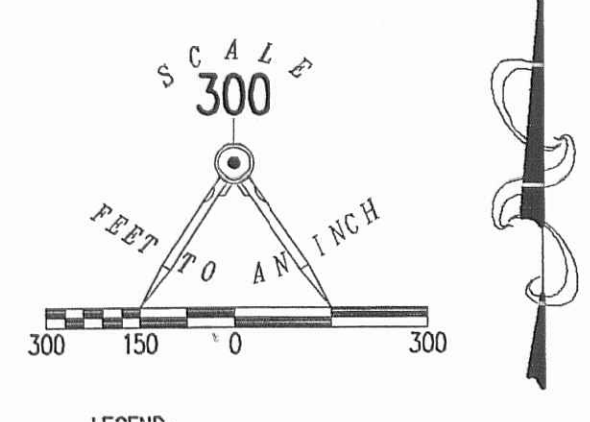
A handwritten signature in black ink that reads 'William K. Bruce'.

William K. Bruce  
Professional Surveyor 7437  
November 8, 2013

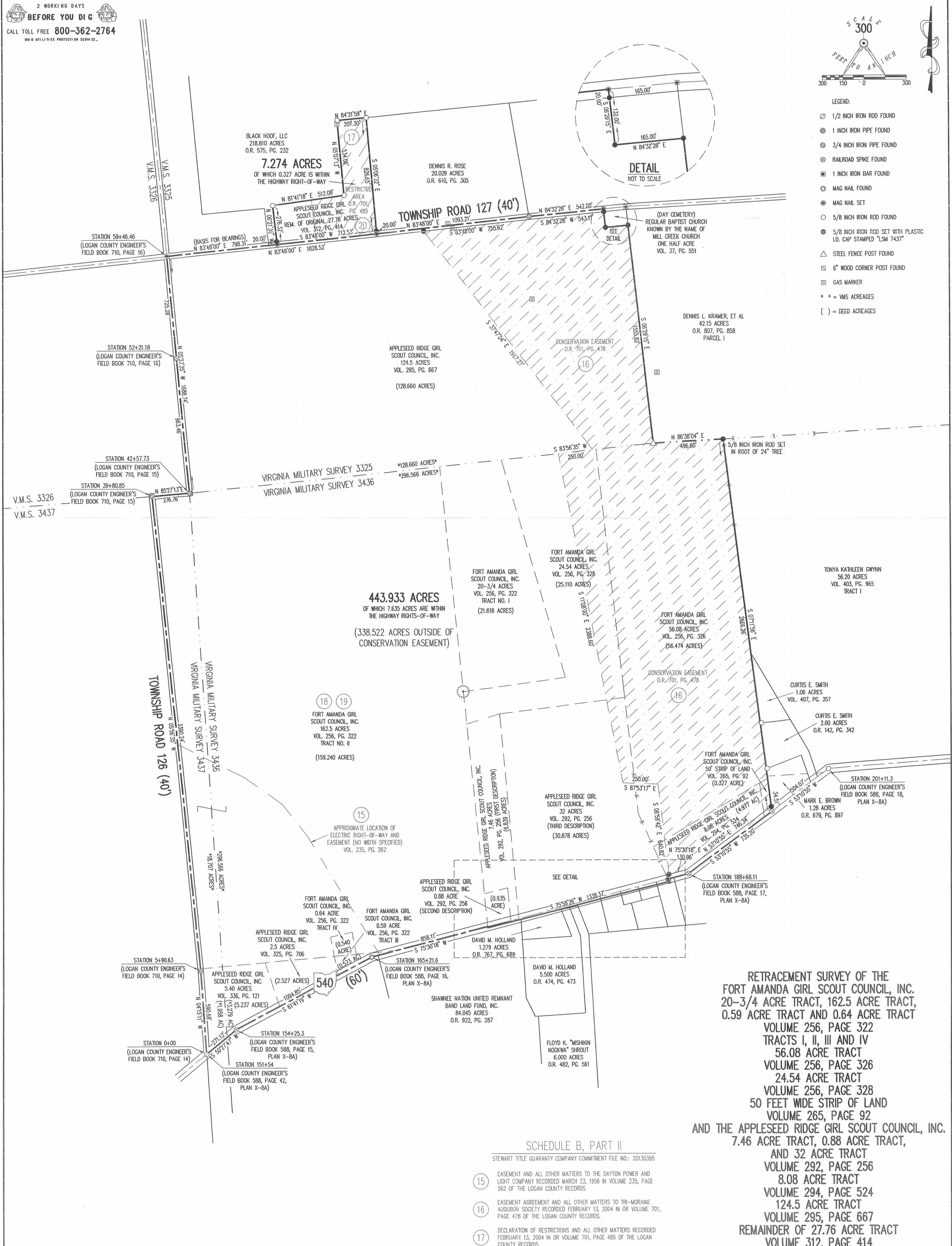
35520913

INDEXED ON MAP  
2074 3D-7





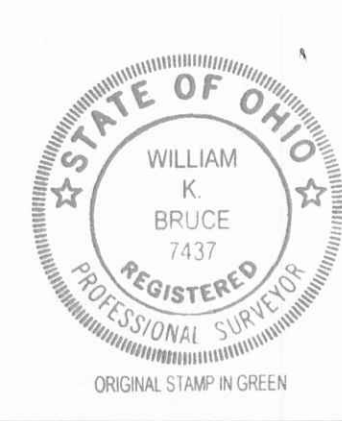
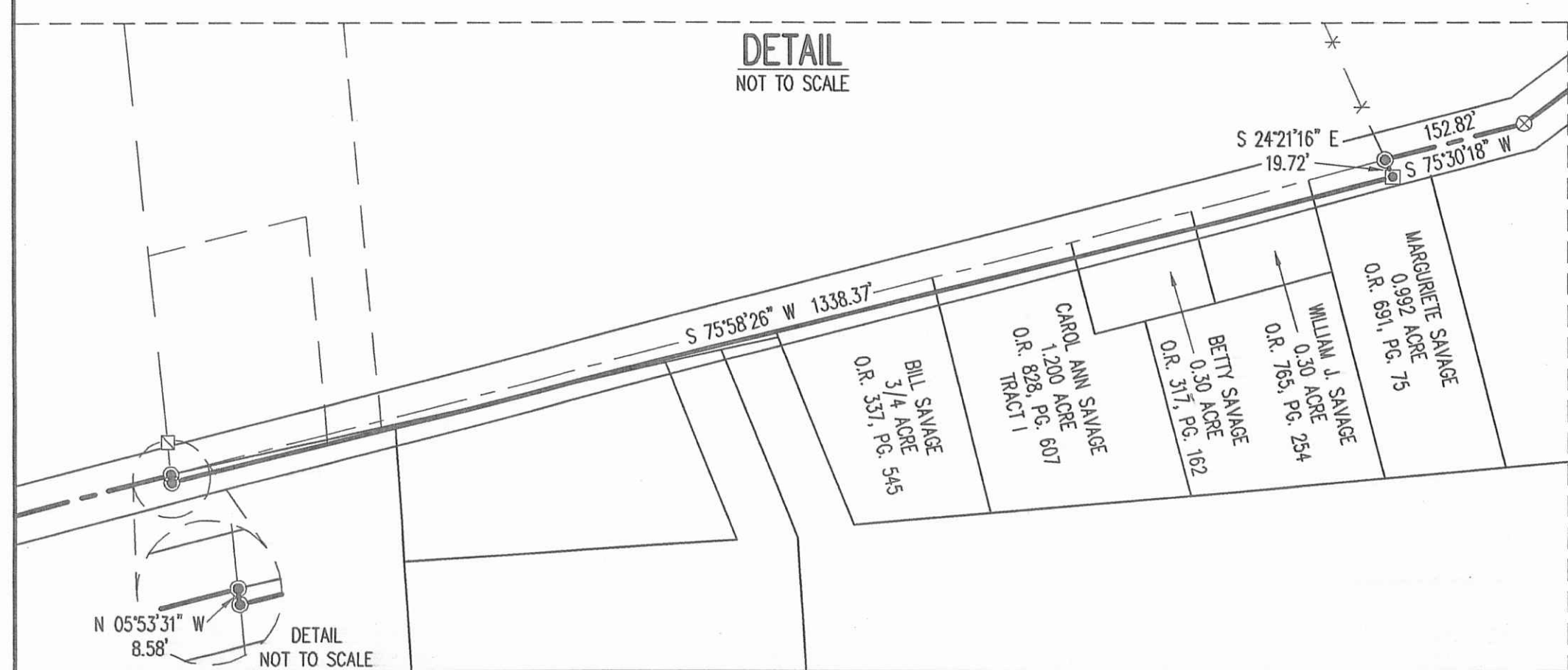
- LEGEND:
- ⊙ 1/2 INCH IRON ROD FOUND
  - ⊕ 1 INCH IRON PIPE FOUND
  - ⊗ 3/4 INCH IRON PIPE FOUND
  - ⊖ RAILROAD SPIKE FOUND
  - ⊞ 1 INCH IRON BAR FOUND
  - ⊙ MAG NAIL FOUND
  - ⊙ MAG NAIL SET
  - 5/8 INCH IRON ROD FOUND
  - ⊙ 5/8 INCH IRON ROD SET WITH PLASTIC I.D. CAP STAMPED "LSM 7437"
  - △ STEEL FENCE POST FOUND
  - ⊞ 6" WOOD CORNER POST FOUND
  - ⊞ GAS MARKER
  - \* = VMS ACREAGES
  - ( ) = DEED ACREAGES



**RETRACEMENT SURVEY OF THE  
 FORT AMANDA GIRL SCOUT COUNCIL, INC.  
 20-3/4 ACRE TRACT, 162.5 ACRE TRACT,  
 0.59 ACRE TRACT AND 0.64 ACRE TRACT  
 VOLUME 256, PAGE 322  
 TRACTS I, II, III AND IV  
 56.08 ACRE TRACT  
 VOLUME 256, PAGE 326  
 24.54 ACRE TRACT  
 VOLUME 256, PAGE 328  
 50 FEET WIDE STRIP OF LAND  
 VOLUME 265, PAGE 92  
 AND THE APPELSEED RIDGE GIRL SCOUT COUNCIL, INC.  
 7.46 ACRE TRACT, 0.88 ACRE TRACT,  
 AND 32 ACRE TRACT  
 VOLUME 292, PAGE 256  
 8.08 ACRE TRACT  
 VOLUME 294, PAGE 524  
 124.5 ACRE TRACT  
 VOLUME 295, PAGE 667  
 REMAINDER OF 27.76 ACRE TRACT  
 VOLUME 312, PAGE 414  
 2.5 ACRE TRACT  
 VOLUME 325, PAGE 706  
 5.40 ACRE TRACT  
 VOLUME 336, PAGE 121  
 VIRGINIA MILITARY SURVEYS 3325, 3436 AND 3437  
 JEFFERSON TOWNSHIP  
 LOGAN COUNTY, OHIO**

**SCHEDULE B, PART II**

- STEWART TITLE GUARANTY COMPANY COMMITMENT FILE NO.: 20130395
- 15 EASEMENT AND ALL OTHER MATTERS TO THE DAYTON POWER AND LIGHT COMPANY RECORDED MARCH 23, 1956 IN VOLUME 235, PAGE 262 OF THE LOGAN COUNTY RECORDS.
  - 16 EASEMENT AGREEMENT AND ALL OTHER MATTERS TO TRI-MORAINÉ AUDUBON SOCIETY RECORDED FEBRUARY 13, 2004 IN OR VOLUME 701, PAGE 478 OF THE LOGAN COUNTY RECORDS.
  - 17 DECLARATION OF RESTRICTIONS AND ALL OTHER MATTERS RECORDED FEBRUARY 13, 2004 IN OR VOLUME 701, PAGE 485 OF THE LOGAN COUNTY RECORDS.
  - 18 PIPE LINE EASEMENT AND ALL OTHER MATTERS TO INLAND CORPORATION RECORDED AUGUST 2, 1963 IN VOLUME 290, PAGE 224 OF THE LOGAN COUNTY RECORDS. \*BLANKET EASEMENT (124.5 ACRE TRACT, VOL. 295, PG. 667)\*
  - 19 EASEMENT AND ALL OTHER MATTERS TO INLAND CORPORATION RECORDED JUNE 5, 1964 IN VOLUME 295, PAGE 583 OF THE LOGAN COUNTY RECORDS. \*BLANKET EASEMENT (124.5 ACRE TRACT, VOL. 295, PG. 667)\*
  - 20 EASEMENT AND ALL OTHER MATTERS TO LOGAN COUNTY COOPERATIVE POWER AND LIGHT ASSOCIATION, INC. RECORDED APRIL 24, 1946 IN VOLUME 189, PAGE 28 OF THE LOGAN COUNTY RECORDS. \*NOT ENOUGH INFORMATION PROVIDED TO THE SURVEYOR TO LOCATE\*
  - 21 EASEMENT AND ALL OTHER MATTERS TO LOGAN COUNTY COOPERATIVE POWER AND LIGHT ASSOCIATION, INC. RECORDED APRIL 24, 1946 IN VOLUME 189, PAGE 28 OF THE LOGAN COUNTY RECORDS. \*NOT ENOUGH INFORMATION PROVIDED TO THE SURVEYOR TO LOCATE\*
  - 22 RESTRICTIONS AND ALL OTHER MATTERS SET FORTH IN DEED RECORDED DECEMBER 20, 2002 IN OR VOLUME 610, PAGE 305 OF THE LOGAN COUNTY RECORDS. \*N/A\*
  - 23 EASEMENT AND ALL OTHER MATTERS RECORDED IN VOLUME 288, PAGE 547 OF THE LOGAN COUNTY RECORDS. \*BLANKET EASEMENT - SAME AS #20



SURVEYED BY:  
*William K. Bruce*  
 WILLIAM K. BRUCE  
 PROFESSIONAL SURVEYOR 7437  
 OCTOBER 5, 2013

COPYRIGHT 2013 BY:  
 LEE SURVEYING & MAPPING CO., INC.  
 117 North Medriver Street  
 BELLEFONTAINE, OHIO 43311  
 (937) 593-7335  
 WWW.LSMINC.US  
 surveys@lsminc.us  
 KSS D0813 35520913 L-3552-11