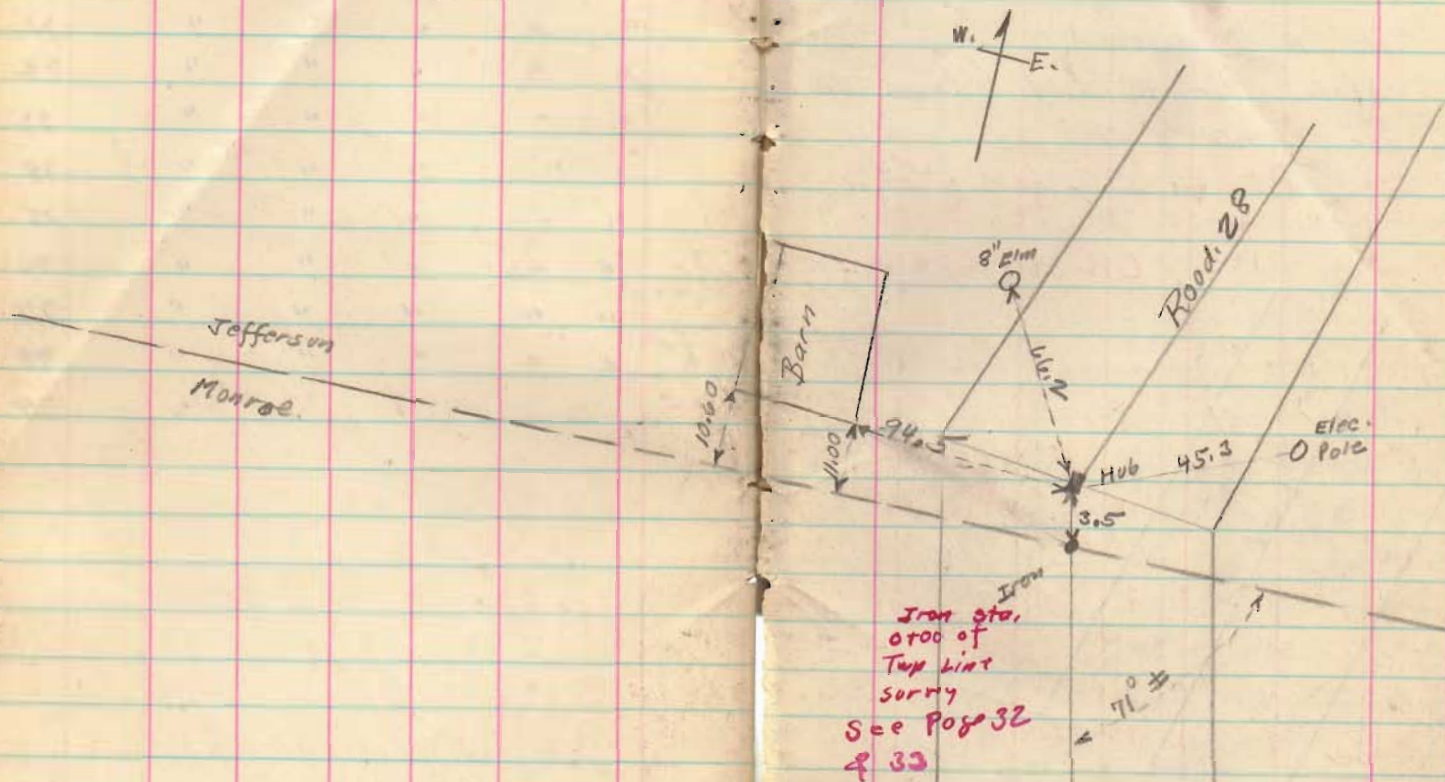


Tap line
 Monroe & Jefferson
 & Road 28

March - 9 - 1938

Snow P.M.
 F. Wright
 G. Wilgus
 Bob Kinnard
 Don Hamilton

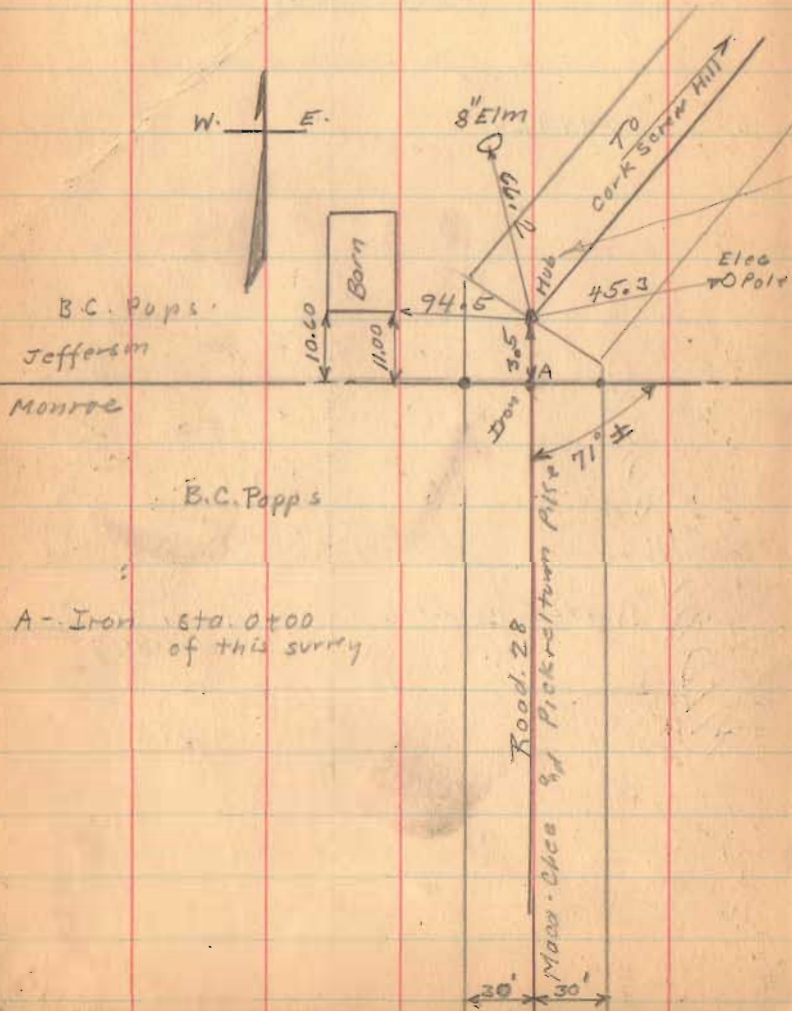


INDEXED ON MAP
 1808

Township line Surrey

Monroe and Jefferson

Road 28 East To Township Corners.



B.C. Pops.
Jefferson
Monroe

B.C. Pops

A - Iron sta. 0+00
of this survey

March - 1938

F. Wright
G. Wilgus
Bob. Kinnard
Don Hamilton
W.P. Wright

58

found hub to June 1968 placed 1" of iron in said
hub. c.n.

V.M.S. 4497

J.L. Williams

F.L. St. John

J.L. Williams

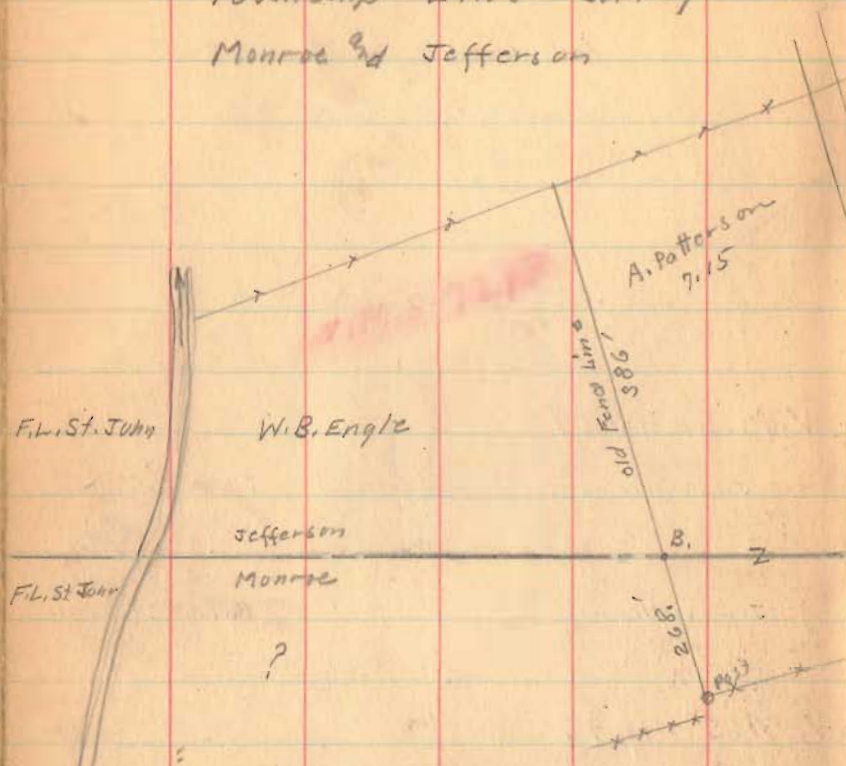
F.L. St. John

V.M.S. 4497

1808

INDEXED ON MAP

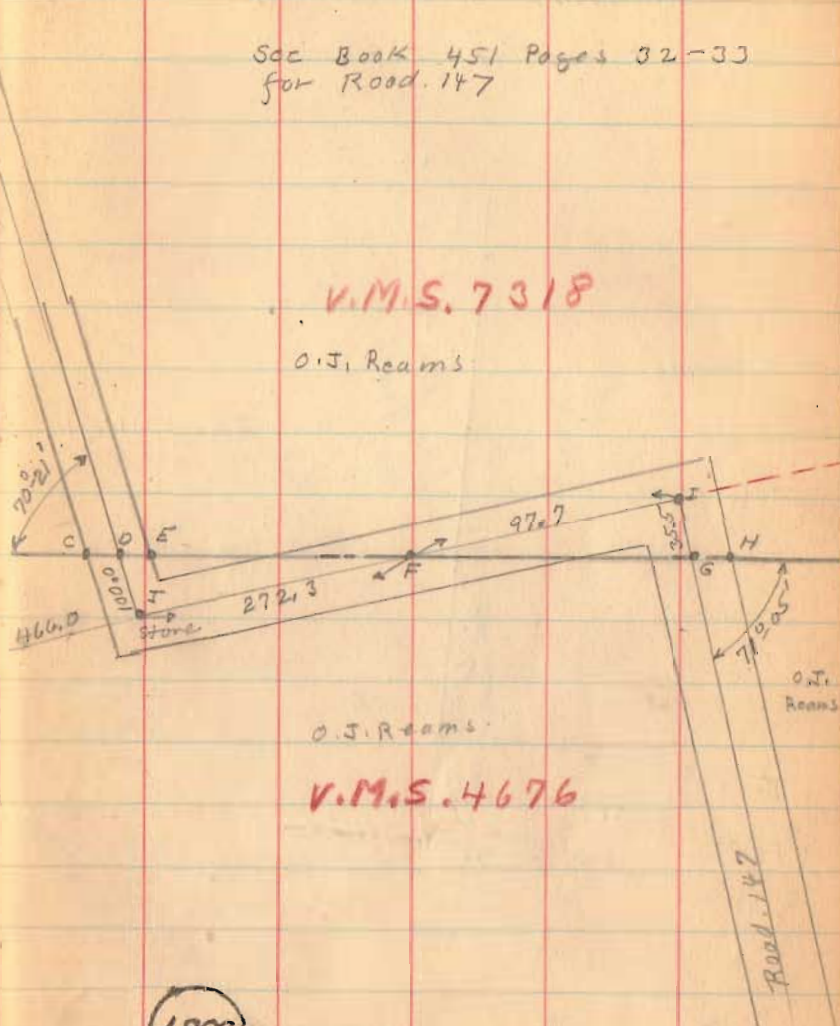
Township Line Survey
 Monroe & Jefferson



See Book 451 Pages 32-33
 for Road. 147

V.M.S. 7318

O.J. Reams



O.J. Reams

V.M.S. 4676

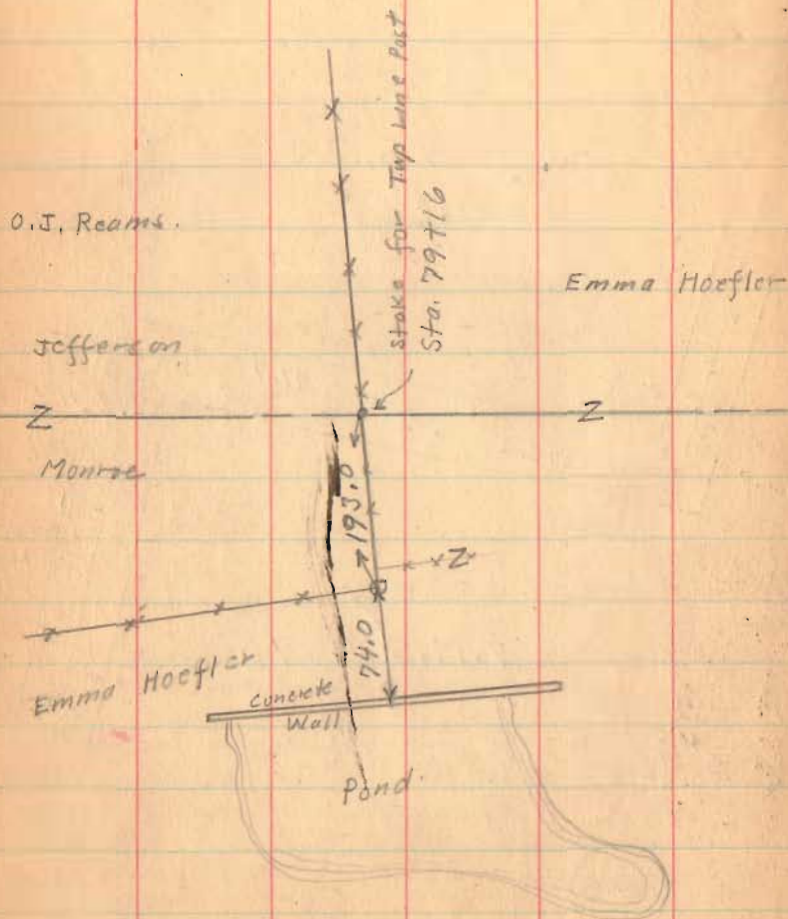
- B. Stake Placed in old fence line sta. 50+24
- C. Hub for Twp Line R/W Marker
- E " " " " " "
- D Iron & Road sta. 55+25.4
- F " " " " 58+15.1
- G " " " " 59+18.5
- H. Hub for Twp Line R/W Marker
- I Hub
- J. Stone

CD = DE = 211.25
 GH = 26.44

1808

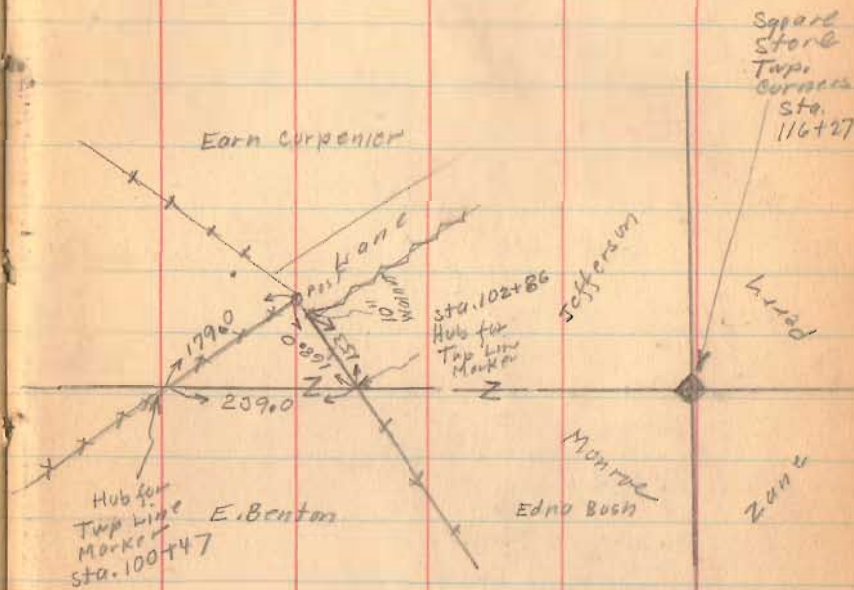
INDEXED ON MAP

Township Line surry
 Monroe and Jefferson



March 1938

60



(see Page 34)

1808

INDEXED ON MAP