

Road 55
25+00 Mont Set

20+00 Mont Set

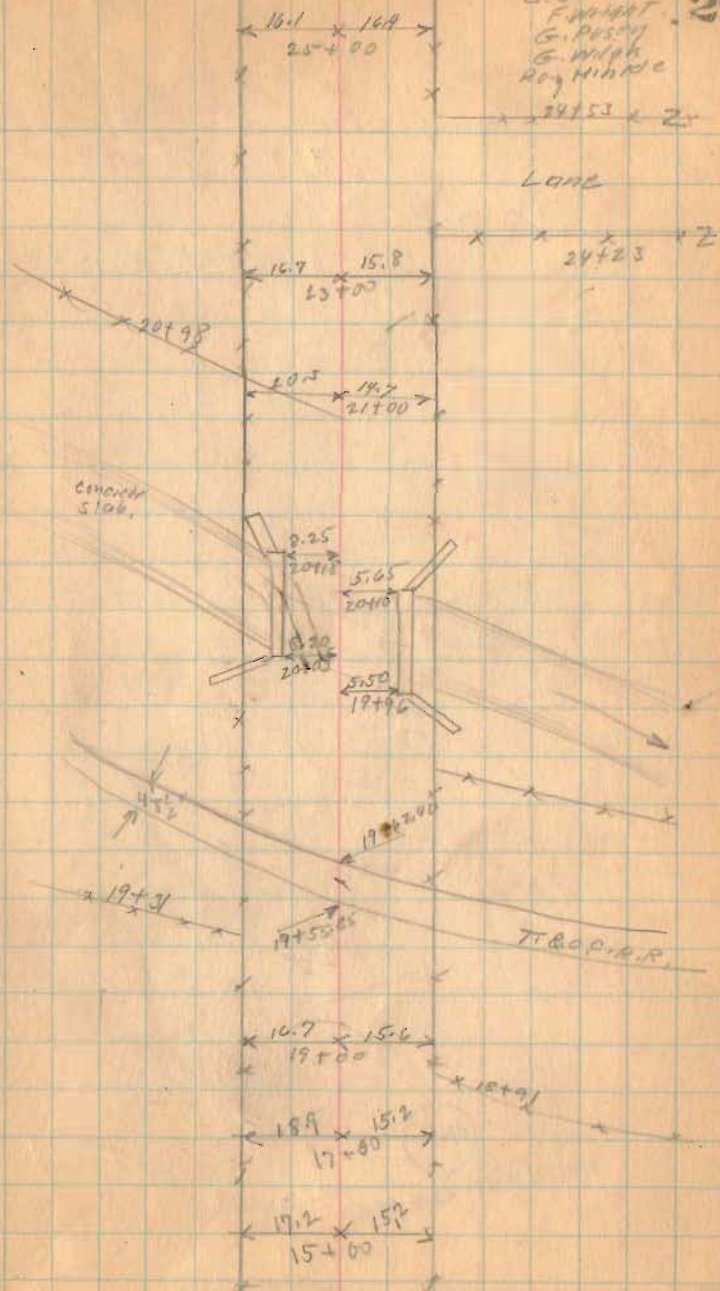
1760

INDEXED ON MAP

15+00 Mont Set

Nov. 10-1936
Clear-Cut
F. W. HUNT
G. P. SMITH
G. W. WILSON
Ray Hillside

29



Road 155

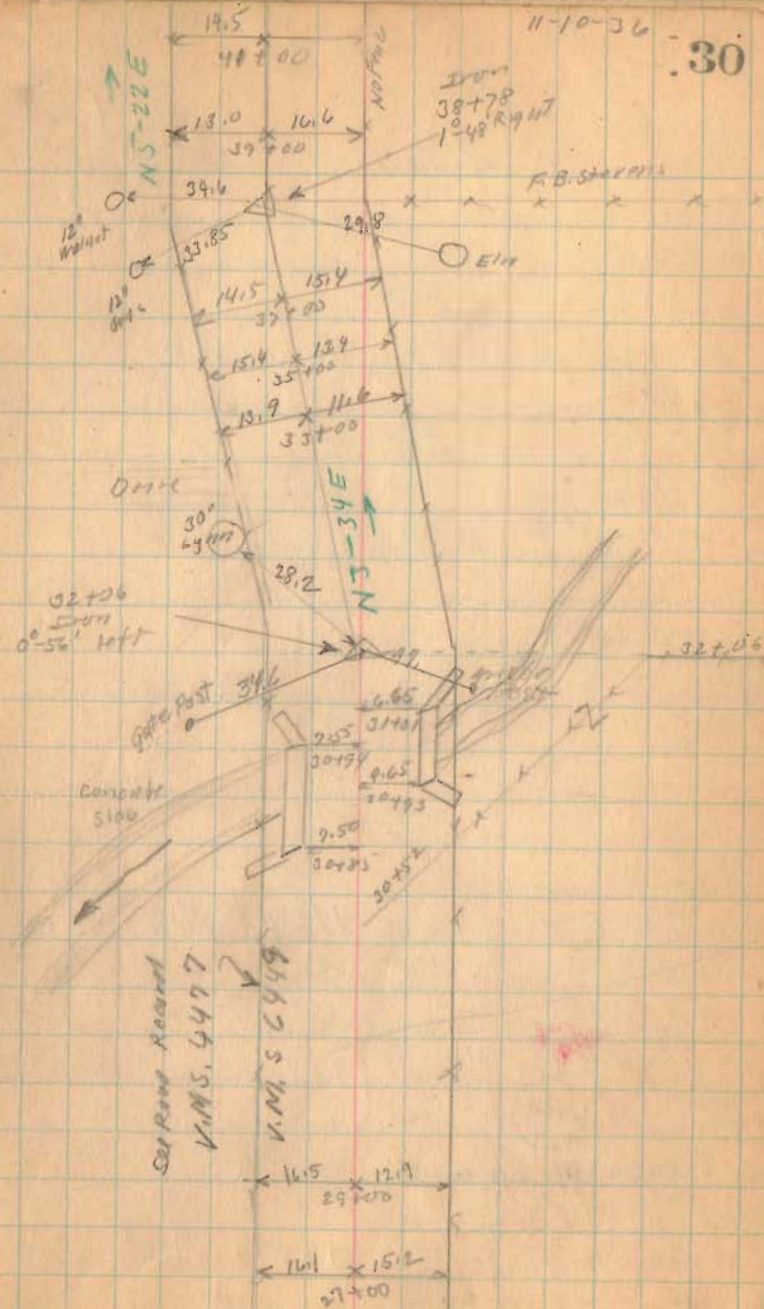
38+00 Mont

37+00 Mont Set

32+06 Mont Set

1760

INDEXED ON MAP



Road 55

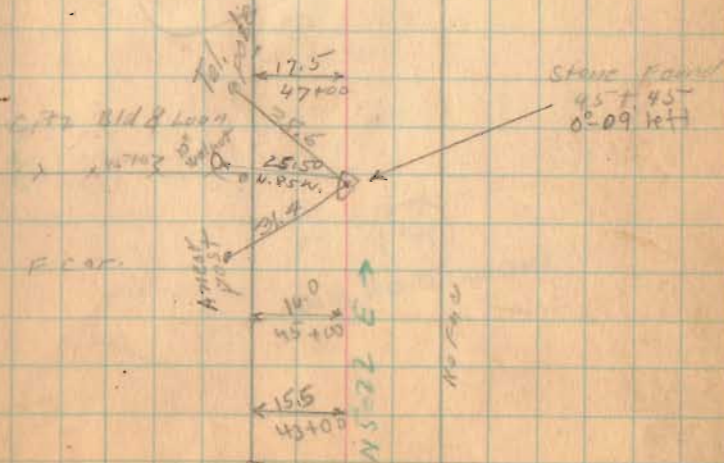
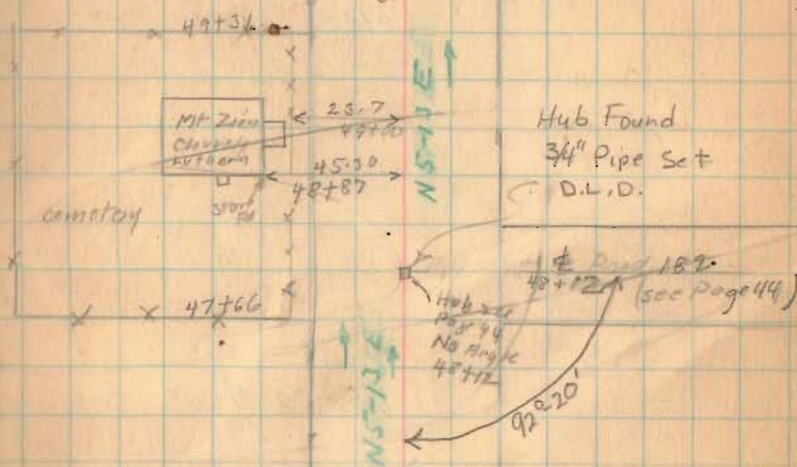
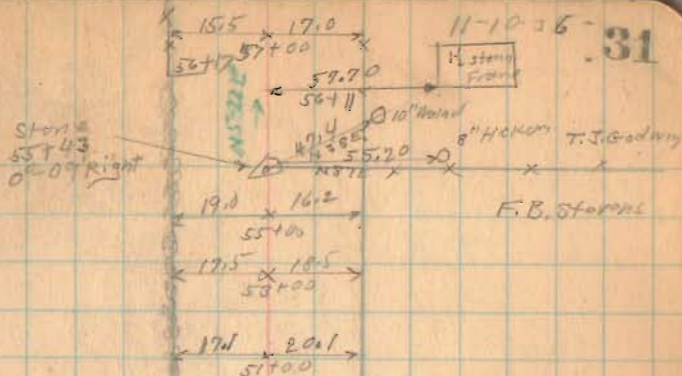
55+00 Mast set

47+00 Mast set

1760

INDEXED ON MAP

44+00 Mast set



Road 55

71+00 Mont. Set

65+00 Mont. set.

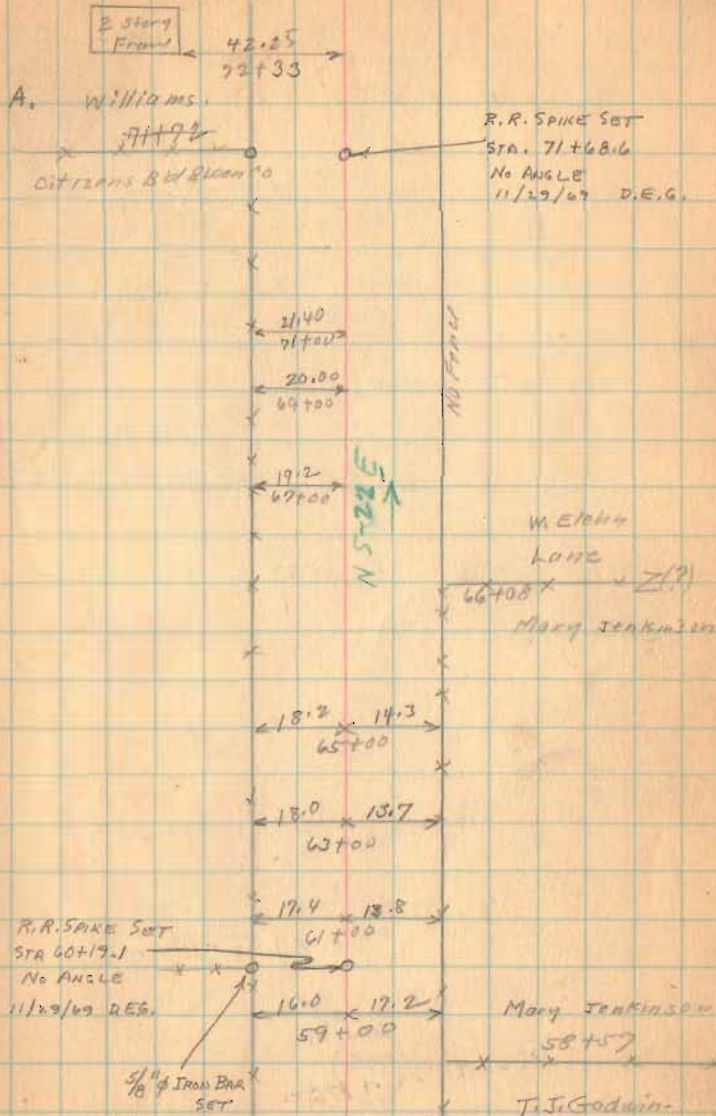
1760

INDEXED ON MAP

Z 72+93

11-10-36

32



Road 155

86+00 Mont set

82+00 Mont set

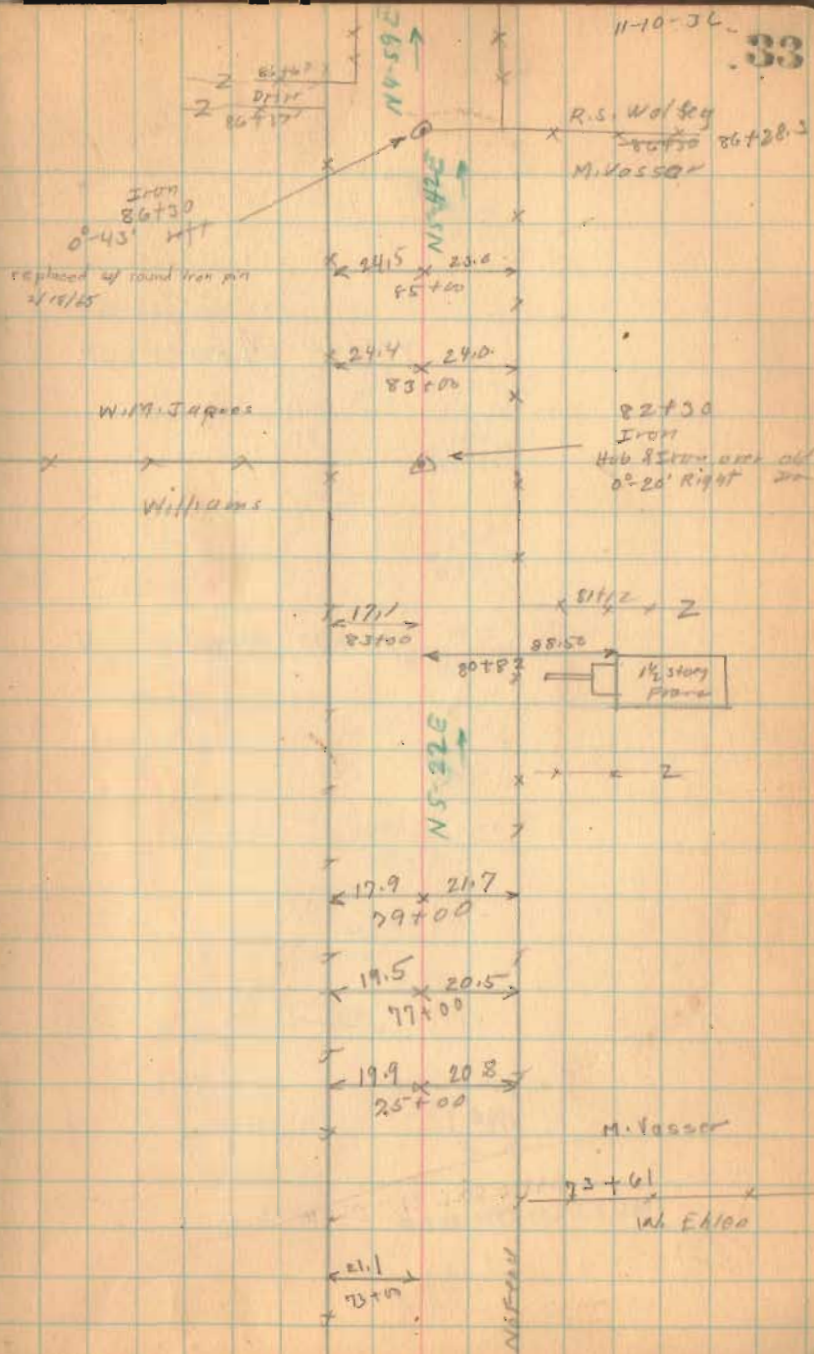
76+00 Mont set

1760

INDEXED ON MAP

11-10-36

33



Road 55

95+00 Mast set

90+00 Mast set

1760

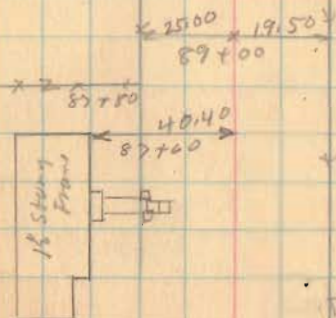
INDEXED ON MAP

Sarah Jones
(No. 100) 95+07

R.O. George

R.O. George

89+74
W.M. Jagoe



z 87+08

21.50
18.9
87+00

Road 55

Length 10118 Feet.

Length 1.916287 Miles

Length 1.92 Miles

100+00 Mont. St

1760

INDEXED ON MAP

35

