

Road 230

36.88

93+89

30+89

Right
only

92+00

18+00

15+06

Left
only 90° Back site

10+00

1689

INDEXED ON MAP

41469

J. M. COY



Barth

37+39

43.00 - 12" Walnut

37+39

16 1/2" N. 7° 37' W.

20.75
37+45

30° Elm

20m

36+89

225' Left

J. M. COY

20 July 1970
Fd 2' dir on (abraded)
1' deep. C.N.

N. 9° W.

N. 49° 16' W.

N. 49° 16' W.

N. 49° 16' W.

N. 49° 16' W.

N. 49° 16' W.

N. 49° 16' W.

N. 49° 16' W.

N. 49° 16' W.

N. 49° 16' W.

N. 49° 16' W.

Fd above on brick
20 July 1970
C.N.

30° Elm

30m

22.5

16.70

R/W non.

4' cedar

(connecting)

Samuel C. Lees

Nov. 15, 1885

Age 93 yrs

10' 1/2

15' 0" 1/2

15+06

20' 5000'

11.30

9489

30° Ash

15+06

15+06

15+06

15+06

15+06

15+06

15+06

15+06

5' 1/2 20' 10' 1/2

30+89 1/2 W

0° 11' Right

R/W non.

4' cedar

(connecting)

Samuel C. Lees

Nov. 15, 1885

Age 93 yrs

10' 1/2

15' 0" 1/2

15+06

20' 5000'

11.30

9489

30° Ash

15+06

15+06

15+06

15+06

15+06

15+06

15+06

15+06

15+06

15+06

Road 230

56700

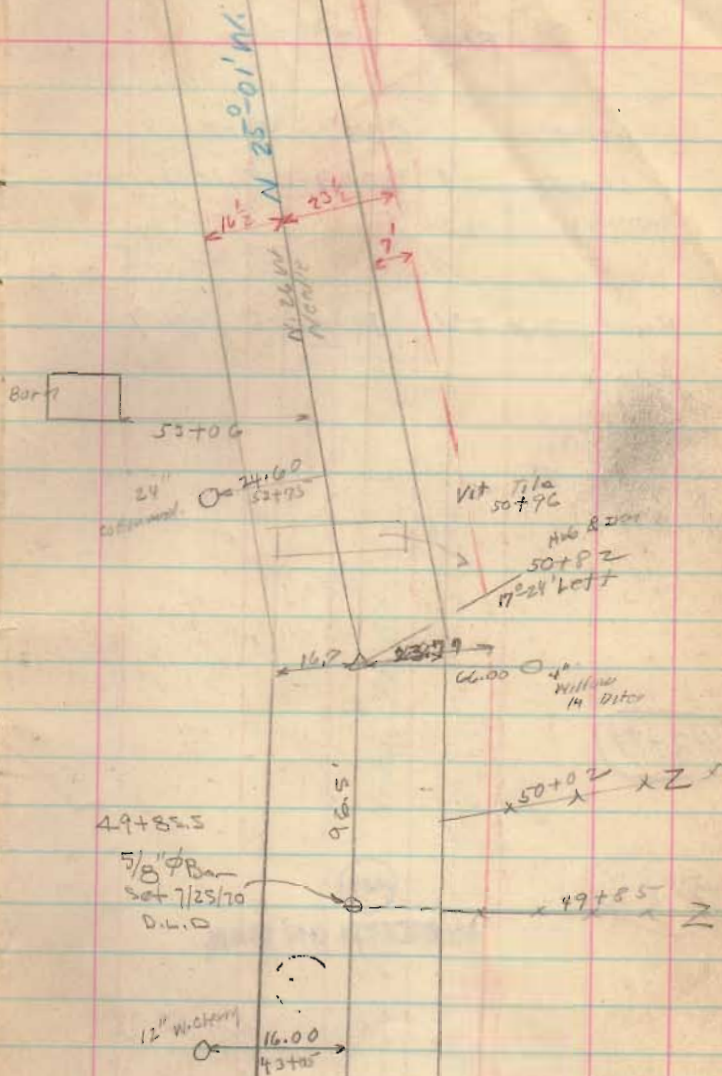
50+82

46+00

42+00

1689

INDEXED ON MAP

Oct. 12, 1933
Cody - Wyo
F.M. of
E. of
T. 2107

Road 230

Length 6338 Feet

Length 1.2004 Miles

Road silt 236 Plan L-5 Page 7

62+79

59+00

1689

INDEXED ON MAP

10-18-35

6338

63+38

Sta. 236
Page 47

1615

Stone 2000

63+00.7

Frank Siskin

M.R. 4117

62+04
Iron
No. 111126300
4279
26379
5910
28996300
5990
32← 64.70
59+801/2 story
floor

N. 25° 01' W.

16 1/2' x 21 1/2'
7'