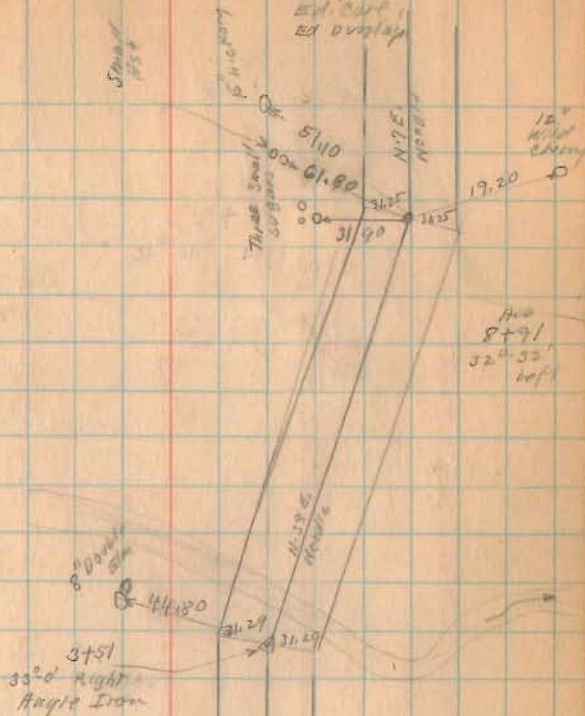


Road 184
 Jefferson Turn
 V.M.S. 3439

Sta. 0+00 to 27+73
 Road Not Passable
 Brushing

1634
 INDEXED ON MAP

March 19-1934
 cold - 10° - clear - snow 72
 wind light
 Ed. Curt
 Ed. Dwyer

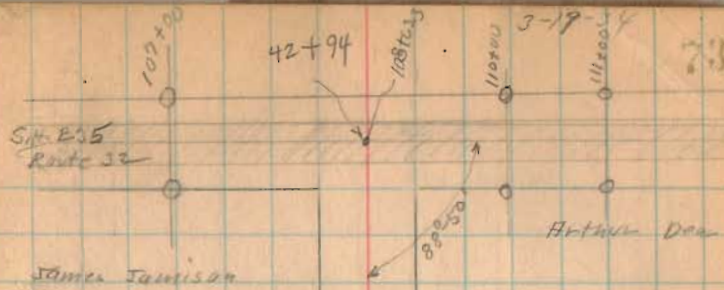


Road 55

Sta 0+00
 same as A
 Page 71

Road 184

Length 4294 Feet
Length miles

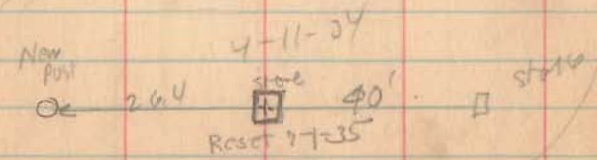


21762 20000

Stone Found
27+73



13° 25' left
16+44
Stone 12" square
Hub 30" right
Hub 30" left
1/2" from line



1634

INDEXED ON MAP

