

Road. 55 Jefferson & Monroe.

Henry Road

Viewers { Jno C Brown  
Sworn { Owen Dillman  
for Wolfinger

Aug. 26 1912

Viewers found in favor  
of road & established  
it 40' wide

S. Wren		2da
Fred McCulloch	ph.ors.	2da
Harner Hostetter	ax	2da
Z. B. Henry	ax	1da

See Pages 43 To 48 for  
1935 survey

0+00 Harrow teeth - O may road -  
Pickrelltown rd.

Wit: 15° Pk Hk, 15° W, 253

W.C. McCulloch

7+45  
FOUST

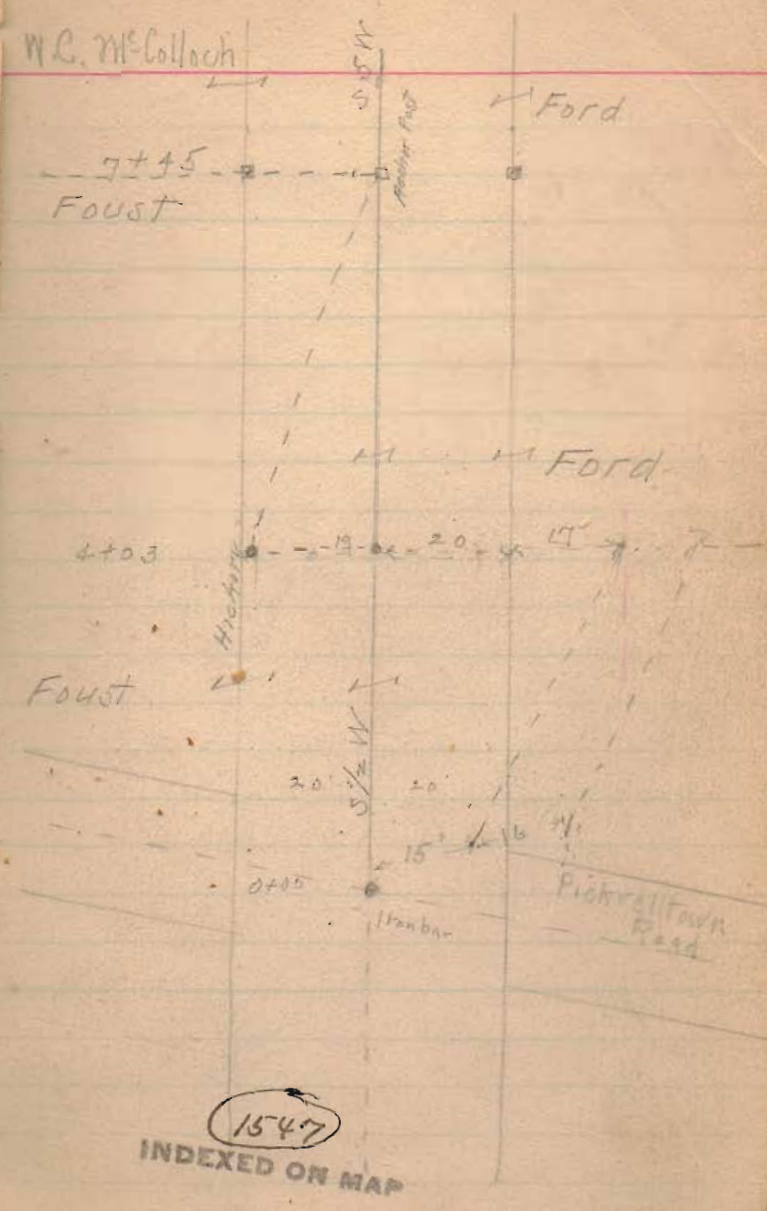
4+03

FOUST

0+05

1547

INDEXED ON MAP



36+92.5

36+96

36+73

Z. B. Henry

B. Walnut  
2' S. of fence

W. O. B. McCulloch

W. O. B. McCulloch

28+93  
28+18

stone

Elisha Ford

W. C.  
McCulloch

7+45

Faust

1547  
INDEXED ON MAP

Esc fence (approx.) S 60 W  
line W. O. B. McCulloch

7+45 S 5 W

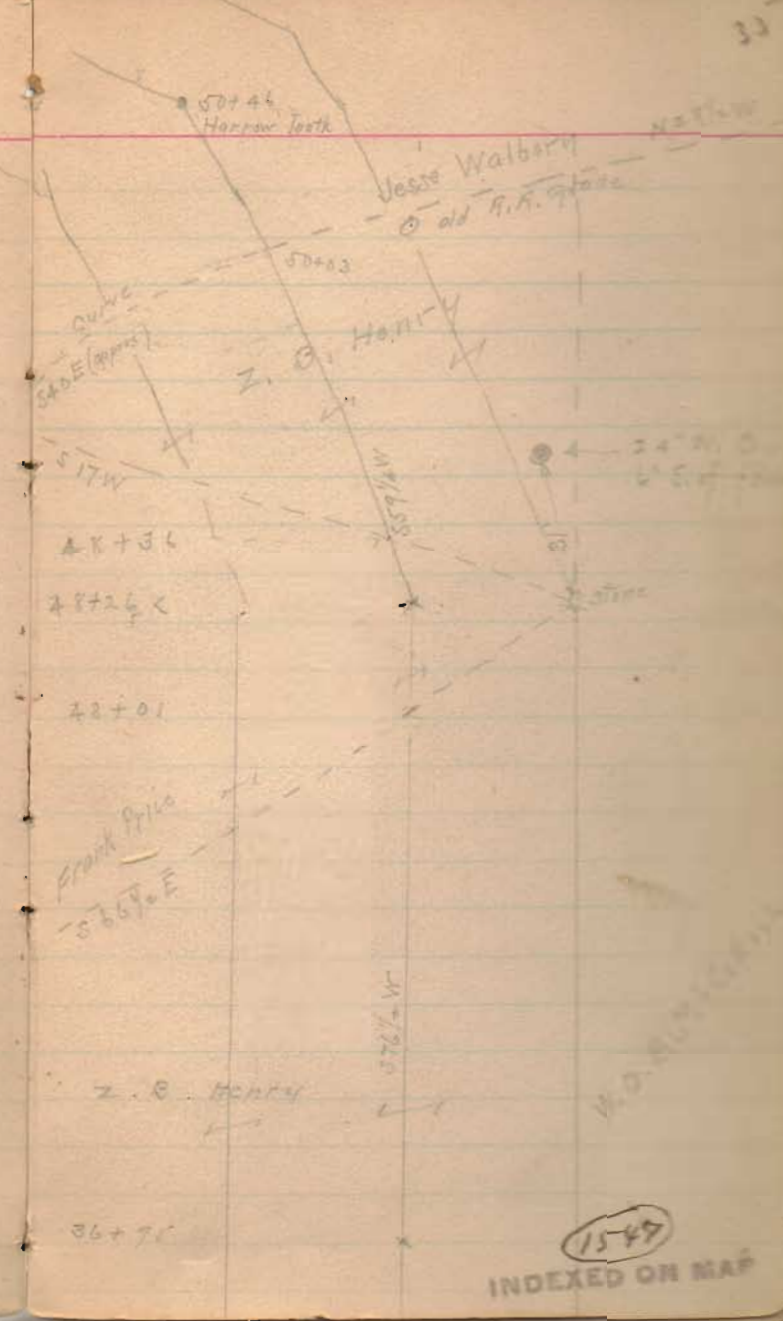


50+46 - Wit! - 2 ax marks on  
 { 18" W.O. down hill.  
 Ax. marks - 2' above ground surf.  
 S 86W - 56'

50+46 - Harvest look - S 16 1/2 W  
 50+03 - old R.R. grade - line Walborn

28+86 W. line Price  
 28+26 S 59 1/4 W

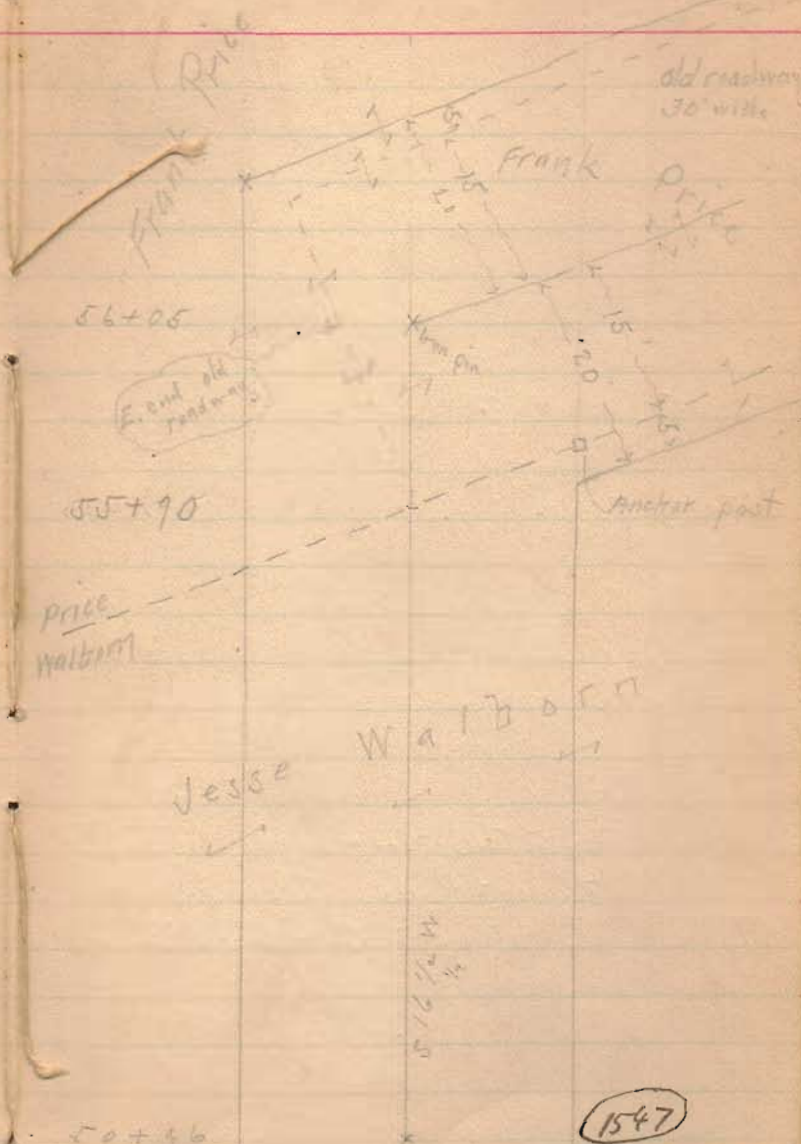
Aug 29 - 1912



INDEXED ON MAP  
 1549

56+05 ← in D old roadway 10m pin  
 N86 3/4 W

55+90 line Price



1547





91+66 End in Ludlow road.

9007 Stake - with Large Walnut, SSE, 372'

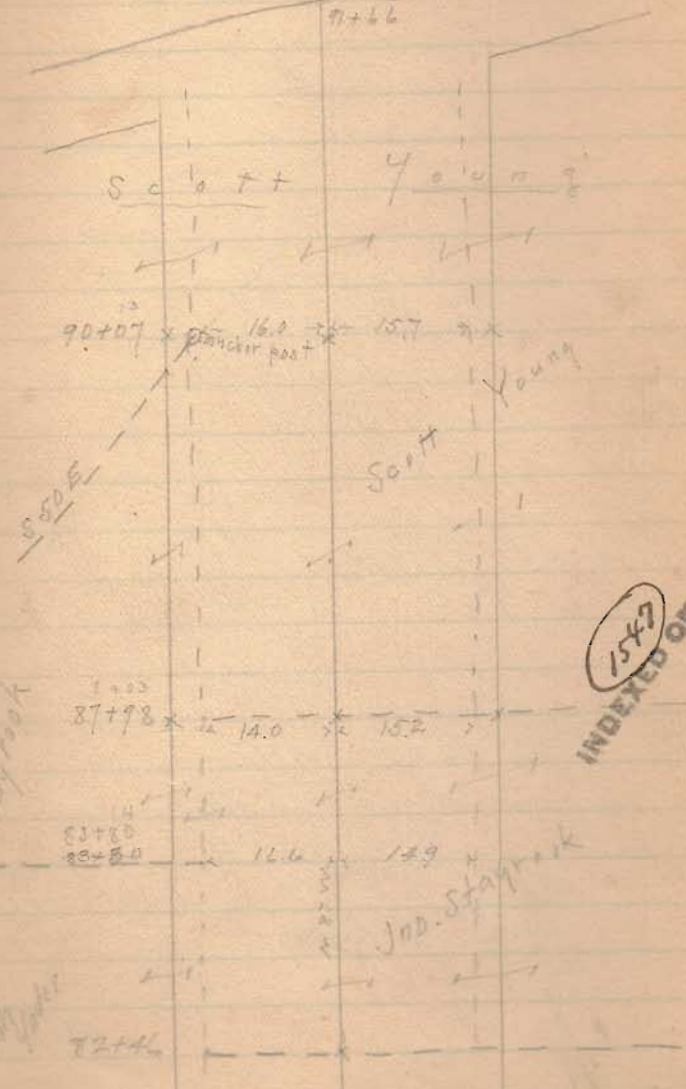
83+66 Stake - S

82+66

N 87 W

Iron pin in Ludlow road

91+66



1547

INDEXED ON MAP



Henry Road. April 10, '13

Viewers { J. K. Elder Sworn  
Ed. F. Miller "  
D. M. Wallace "

Chairman { Hamer Craviston  
John S. Sapp.

Marker Allie Young.

Surveyor. Edward H. Bushong.

Surveyed the same line as surveyed  
Aug. 26 & 27, 1912.  
Which survey see preceding pages.

1547  
INDEXED ON MAP







Road 55

55+00

50+49

48+26

Left Only

47+00

43+00

1547

INDEXED ON MAP

45

1247-13

50+49  
Marion Tooth  
43 210' left  
(reset 1" iron)  
19 July 1966

50+08.5  
RR SPIKE SET  
6/2/73 E.C.

E. Krawill  
old RR. FILL

D.J. FOSTER

50+04

R.R. OUT

48+26  
S. 56-65 W.

24' STAMP

28.4  
N. 72 W.

71.3  
N. 101 W.

61.5 20 10" STAMP  
VAC. W.

Stone Fence

Hob  
16-57 left

48+26

(set 1" iron)  
19 July 1966

E. Marshfield  
W.D. B.M. Callahan

Z. Henry

48+00

S. 76-45 W.

5049  
4926  
223





Road 55

82+00

80+37

25+00

70+00

64+00

7029  
6374  
655

7406  
6228  
878

7029  
6224  
405

7496  
7051  
445

1547

INDEXED ON MAP

(found 18 July 66 ed.)  
Iron  
82+50  
0<sup>2</sup> 18' 4" H

(Reset 1" diron)  
19 July 64  
74496  
0<sup>2</sup> 29' 4" H

M. & S. Yoder  
72+25  
John Holman

stone  
70+29

63+74

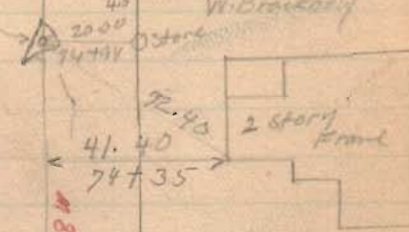
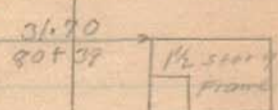
12  
38.25  
36.75  
N 12° W  
112-10-35 47  
Russ Headings  
x x 82+50  
H.S.M. = Clure

N. 86-98 N

N. 86-98 N

39.3  
N 5° E

N N



Iron (found  
70+29 (23 July 66 ed.)  
0-34' Right  
Did not find  
set RR spike  
PLC  
3/1/74  
W. Broadway  
60+24  
E. 200 ft

land line



Road, 55

Length 9176 Feet  
Length 1.737878 Miles  
Length 1.74 Miles

91735

87700

1547

INDEXED ON MAP

(found 18 July '06)

91775  
~~91770~~  
~~91770~~

(See Box 598  
Page 15)

48

Road No. 1  
Ludlow Pike

72°-03'

Iron  
91735

For Monuments

H.D. Young

90731

A.P. Young

88+00 (No. 100)

Ross Headings

Complex  
Slab

1 Story  
Frame

75.00  
86+34

N 85-55 W  
15'  
N 86-00 N

Ross Headings

x 83+80 x

M.A. Young