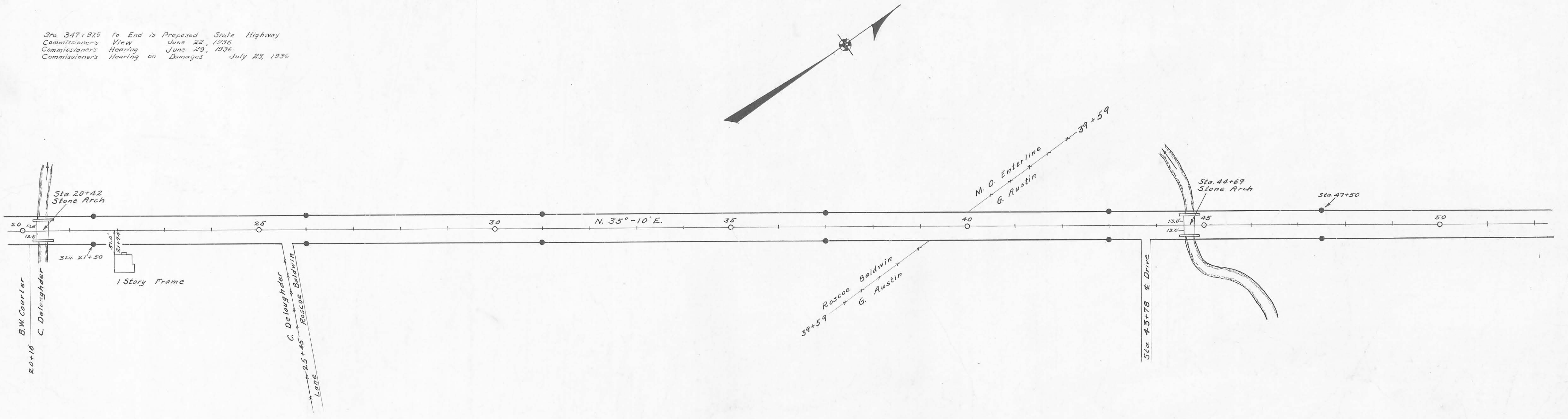


P.I. Sta. 41+63.4  
Δ = 21°-14'  
D = 12'  
T = 89.66'  
E = 8.38'  
See Plan L-22  
Logan County Engineer's Office

See Plan L-22  
Logan County Engineer's Office

Bellefontaine - Rushsylvania Pike 1873 60' wide  
See Free Turnpike Record Vol. 3 Page 238  
See Map Book H Page 56  
Rushsylvania - Big Springs Pike 1874 60' wide  
See Free Turnpike Record Vol. 3 Page 348  
See Map Book H Page 58  
Concrete right-of-way monuments set as shown  
Field Notes Book 578, Logan County Engineer's Office

Sta. 347+975 To End is Proposed State Highway  
Commissioner's View June 22, 1936  
Commissioner's Hearing June 29, 1936  
Commissioner's Hearing on Damages July 23, 1936



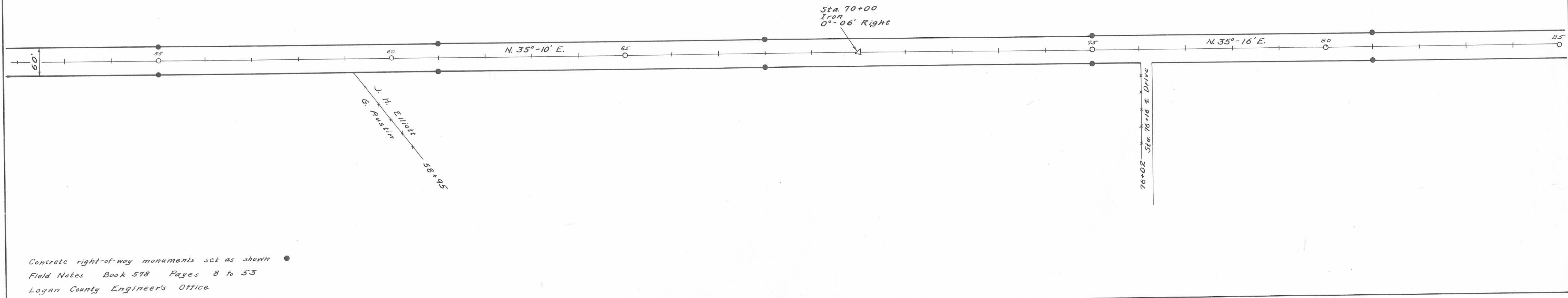
Surveyed By J.S. Crane  
February 1934  
Drawn By E.K. Corb  
May 1936

ROAD 9

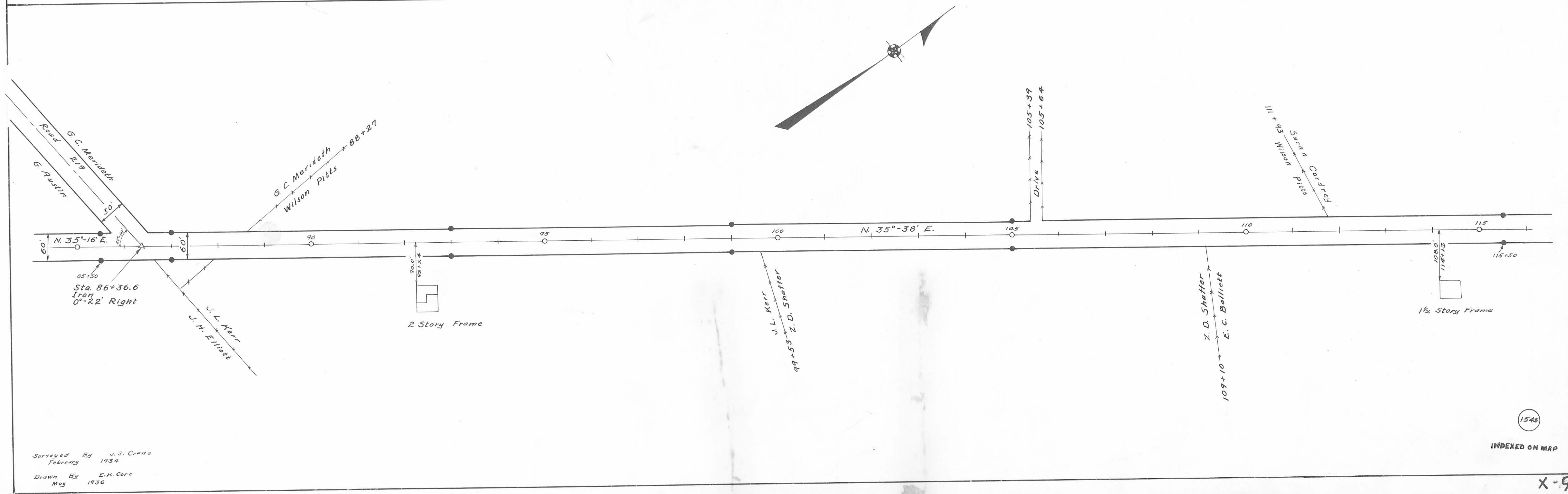
X-9

X-9

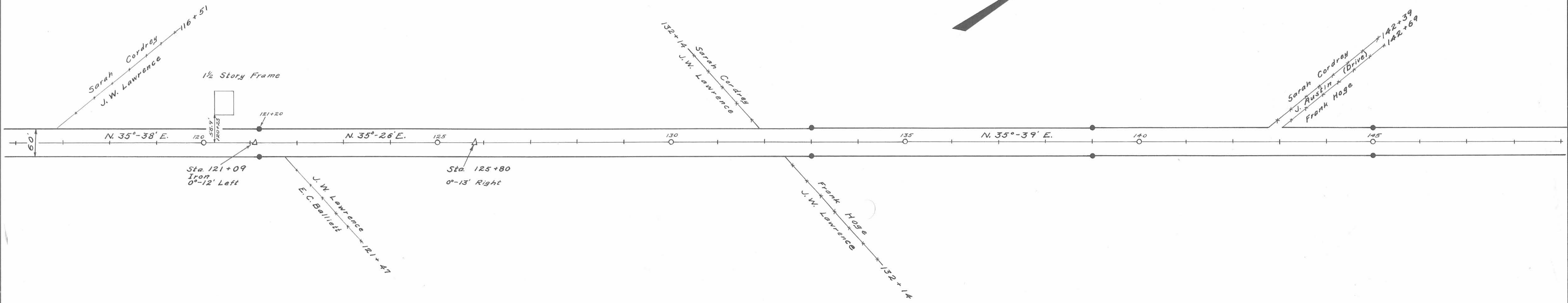
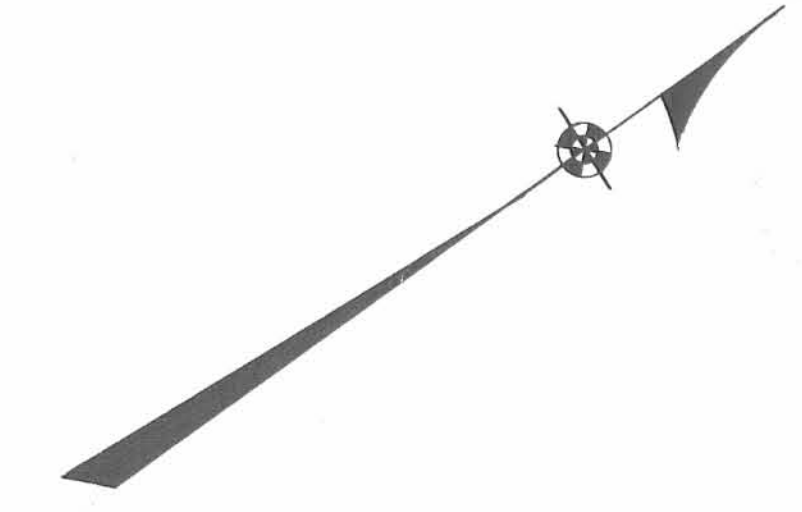




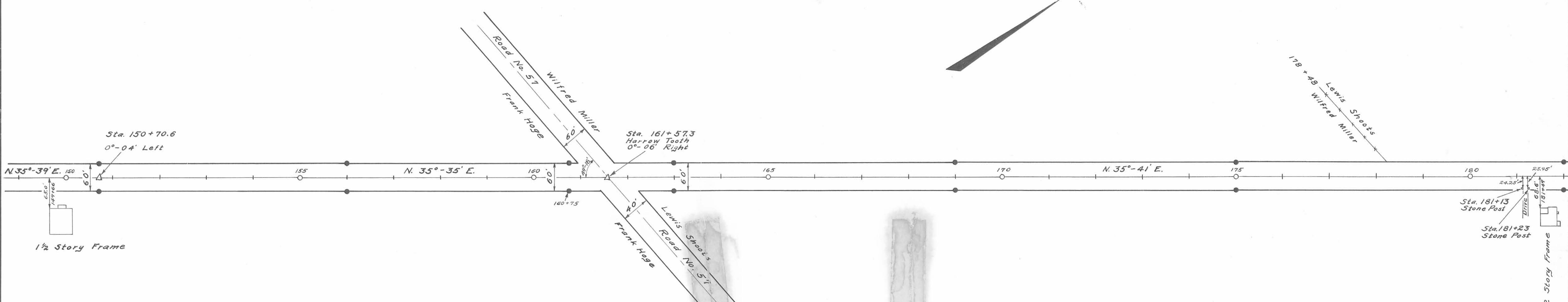
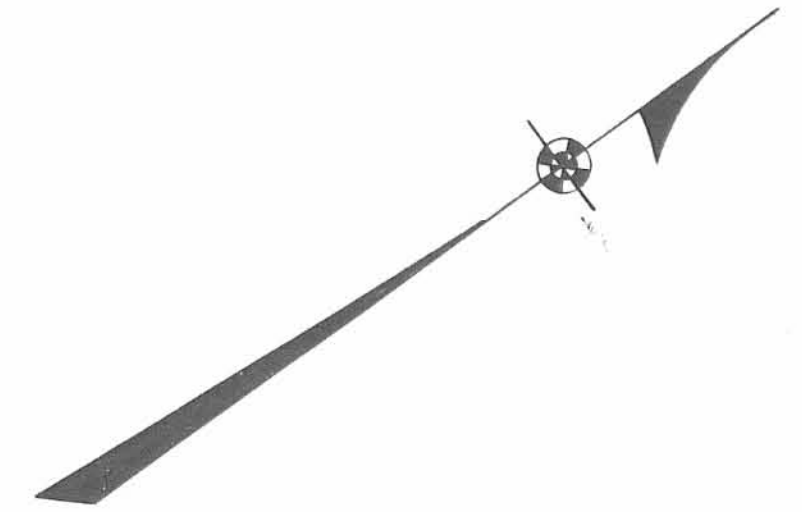
Concrete right-of-way monuments set as shown  
 Field Notes Book 578 Pages 8 to 53  
 Logan County Engineer's Office



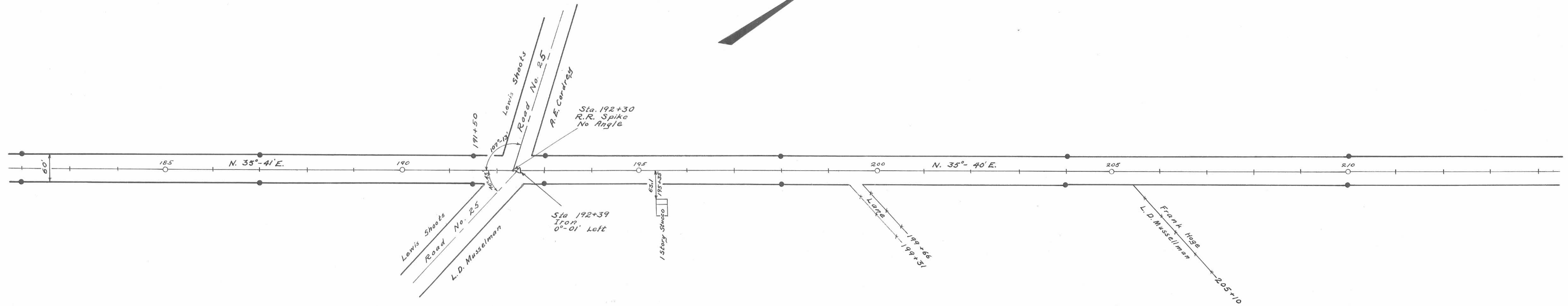
Surveyed By J. S. Crone  
 February 1934  
 Drawn By E. K. Core  
 May 1936



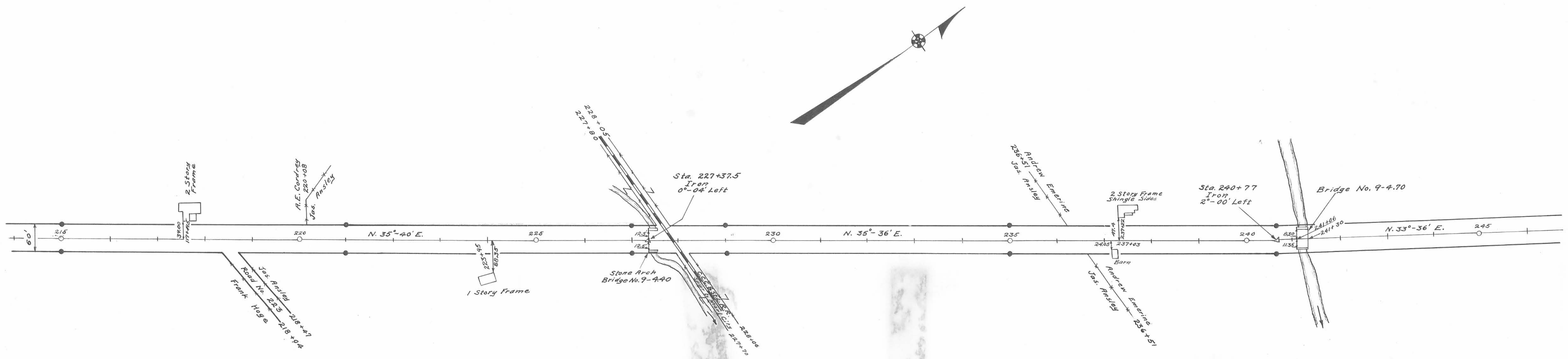
Concrete right-of-way monuments set as shown •  
Field Notes Book 578 Pages 8 to 53  
Logan County Engineers Office



Surveyed By J.S. Crane  
March 1934  
Drawn By E.K. Core  
May 1936

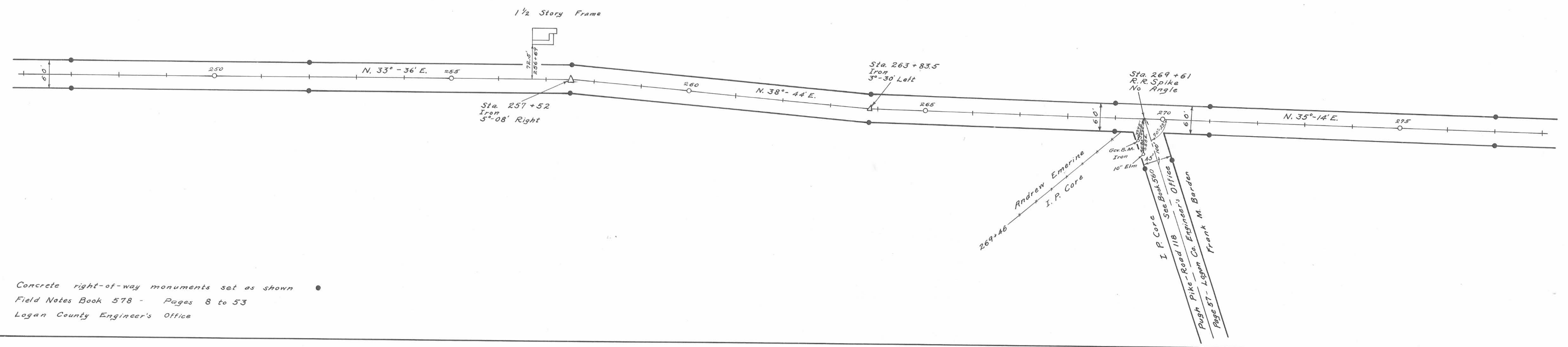


Concrete right-of-way monuments set as shown ©  
 Field Notes Book 578 Pages 8 to 53  
 Logan County Engineers Office

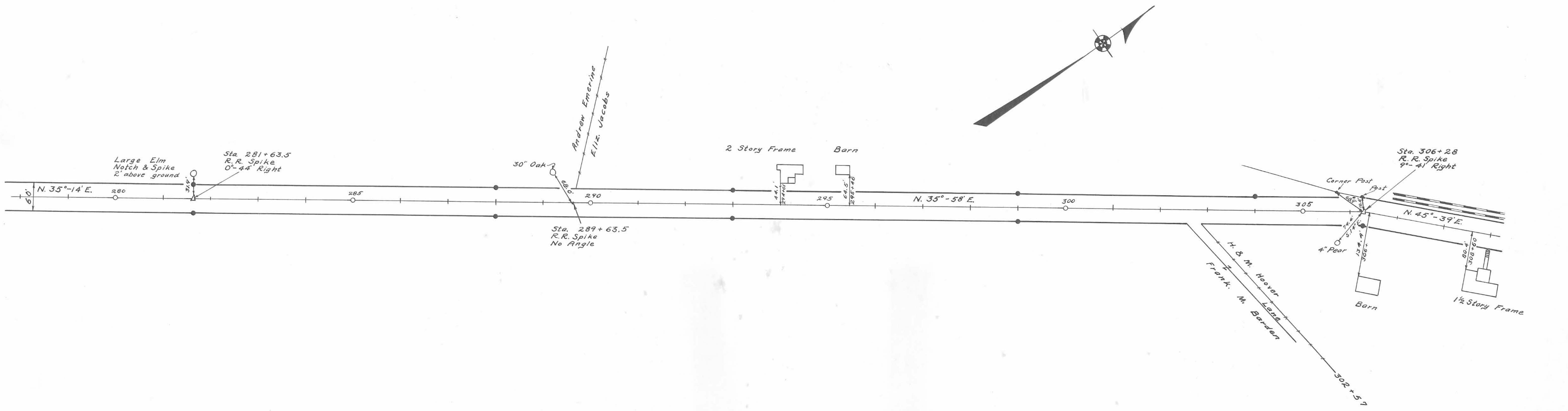


Surveyed By U. S. Crane & F. F. Wright  
 March 1934  
 Drawn By F. F. Wright & E. K. Core  
 May 1936

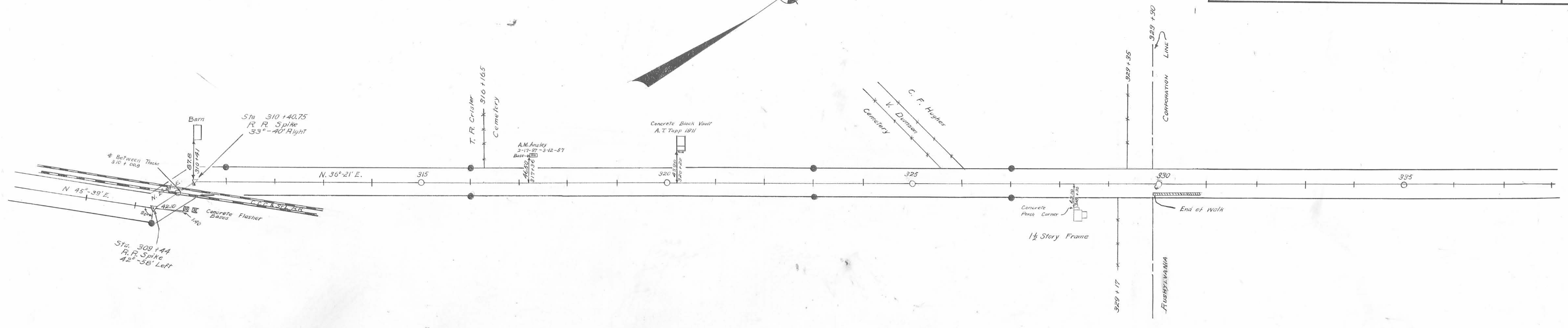




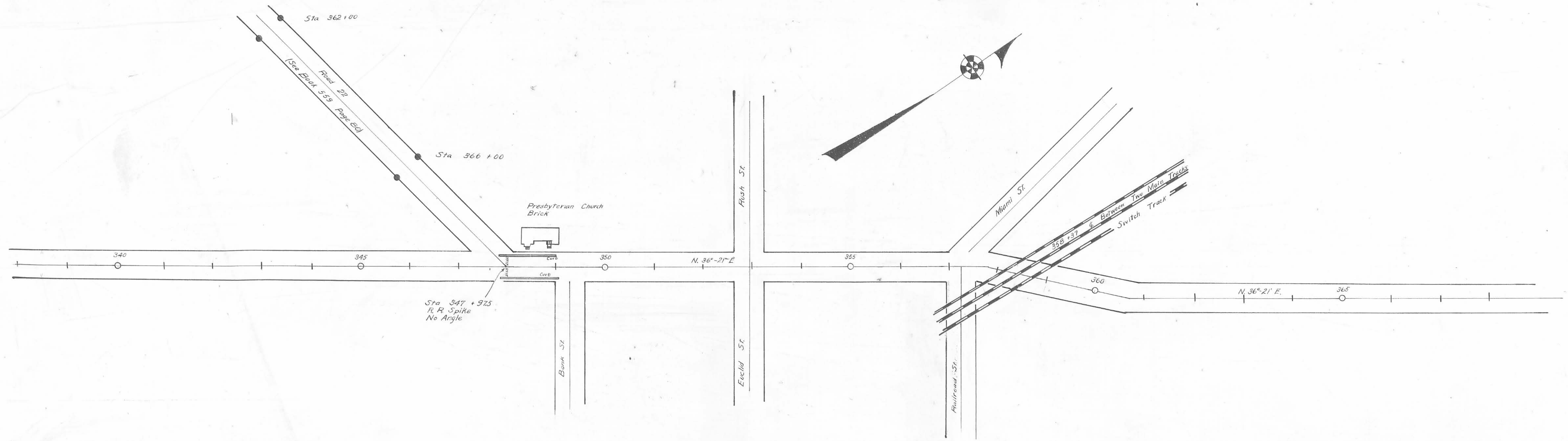
Concrete right-of-way monuments set as shown  
 Field Notes Book 578 - Pages 8 to 53  
 Logan County Engineer's Office



Surveyed By F. F. Wright  
 March 1934  
 Drawn By E. K. Core  
 May 1936

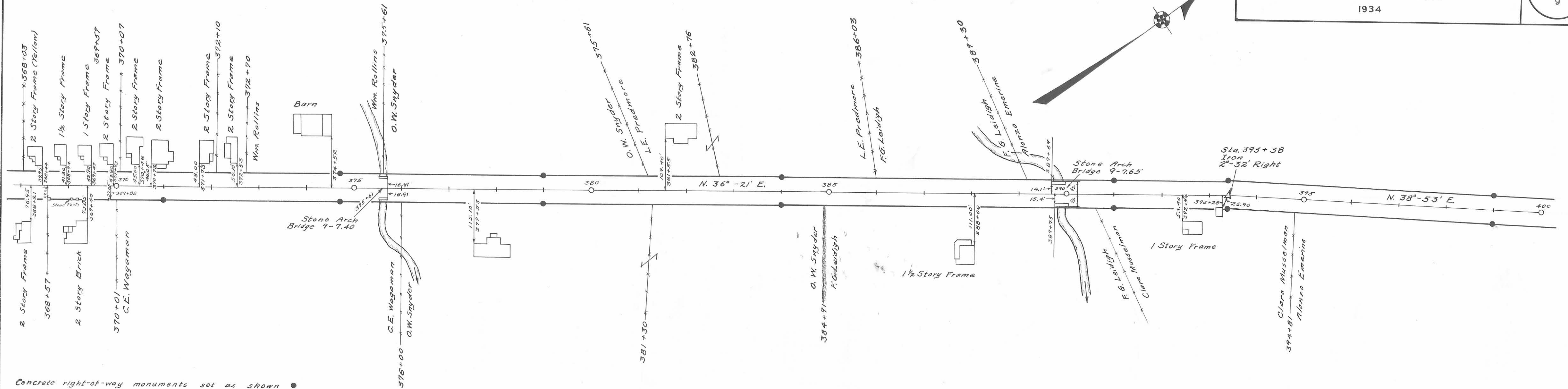


Concrete Right of Way Markments Set as Shown  
Field Notes Book 578 Pages 8 to 53  
Logan County Engineer's Office

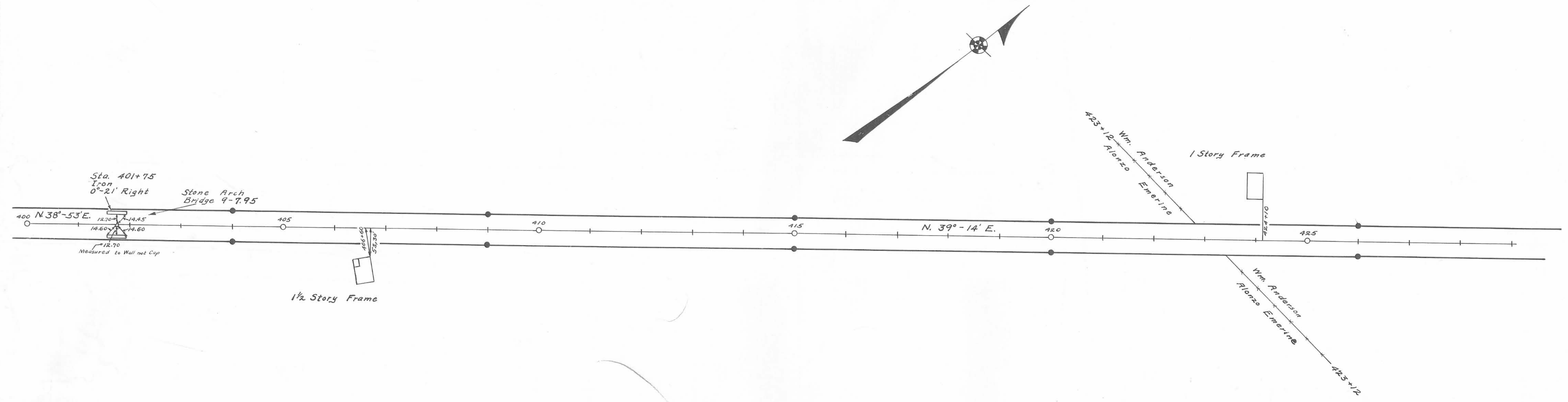


Surveyed By R. F. Wright  
March 1934  
Drawn By E. K. Cere  
June 1936

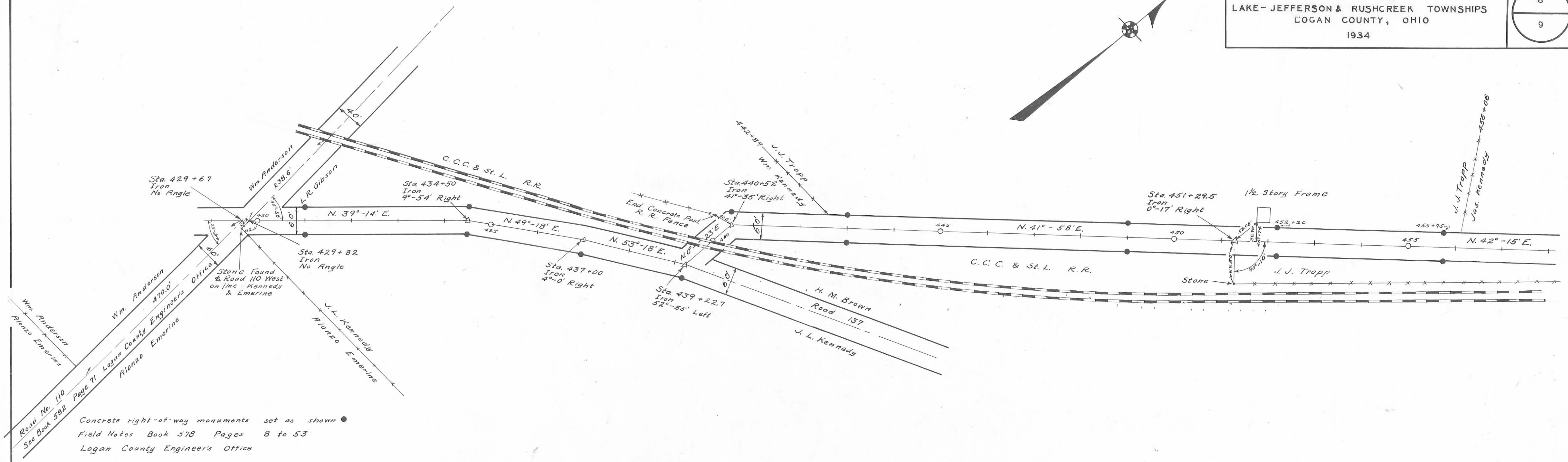




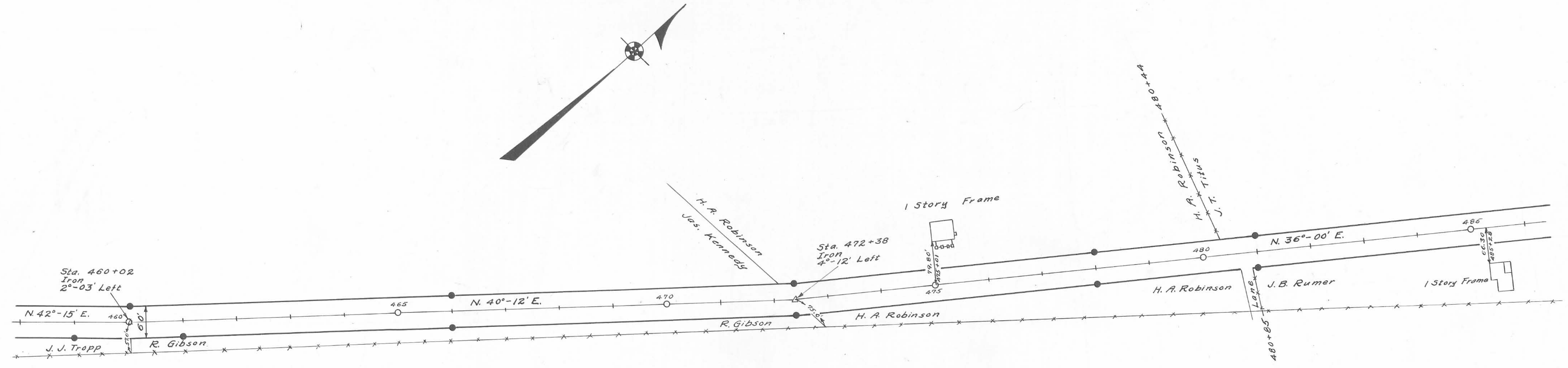
Concrete right-of-way monuments set as shown ●  
Field Notes Book 578 Pages 8 to 53  
Logan County Engineers Office



Surveyed By F. F. Wright  
March 1934  
Drawn By E. K. Carr  
May 1936

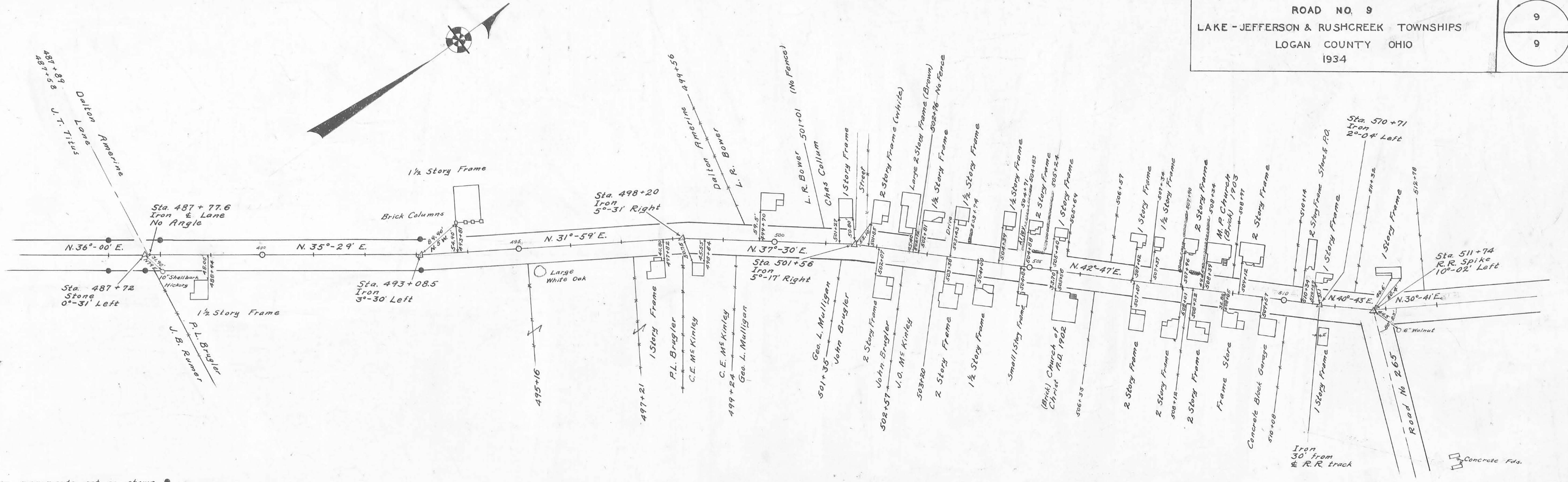


Concrete right-of-way monuments set as shown  
Field Notes Book 578 Pages 8 to 53  
Logan County Engineer's Office



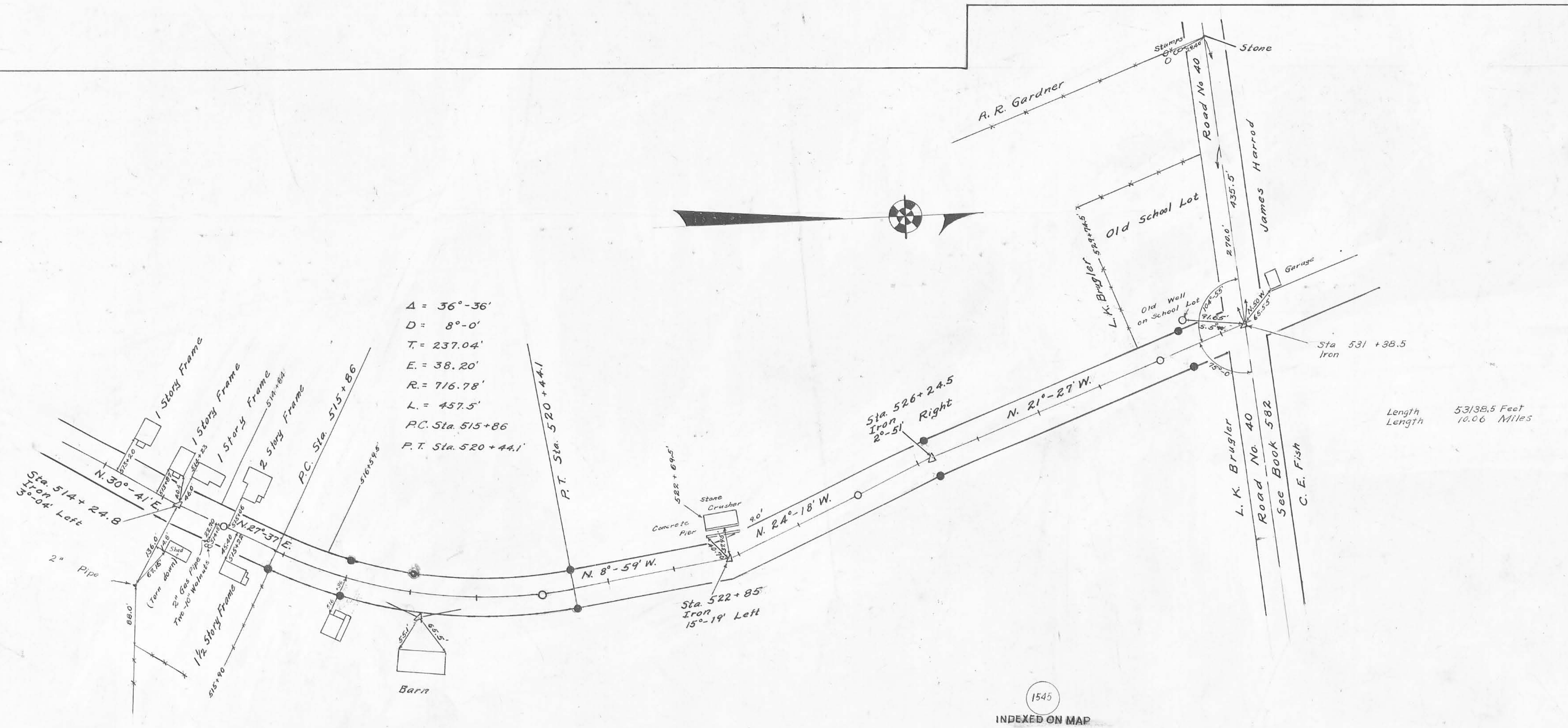
Surveyed By F.F. Wright  
March 1934  
Drawn By E.K. Corb  
May 1936





Concrete right-of-way monuments set as shown •  
Field Notes Book 578 Pages 8 to 53  
Logan County Engineers Office

ROAD 9



Surveyed By F.F. Wright  
March 1934  
Drawn By E. H. Cera  
June 1936

1545  
INDEXED ON MAP



Road 9 (Rushsylvania Pike)

Lake - Jefferson & Rushcraft Taps.

60' Free Turnpike Record  
3 Page 238 1893  
Map Book H Page 56  
Profile Vault.

Hand Surv  
Book 493  
Page 72  
M.S. Adams  
C.B. Rogers

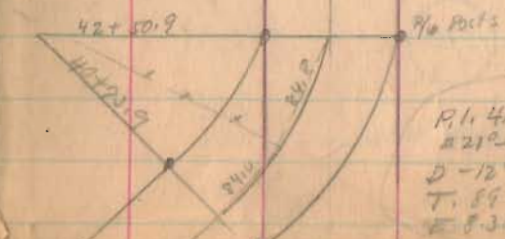
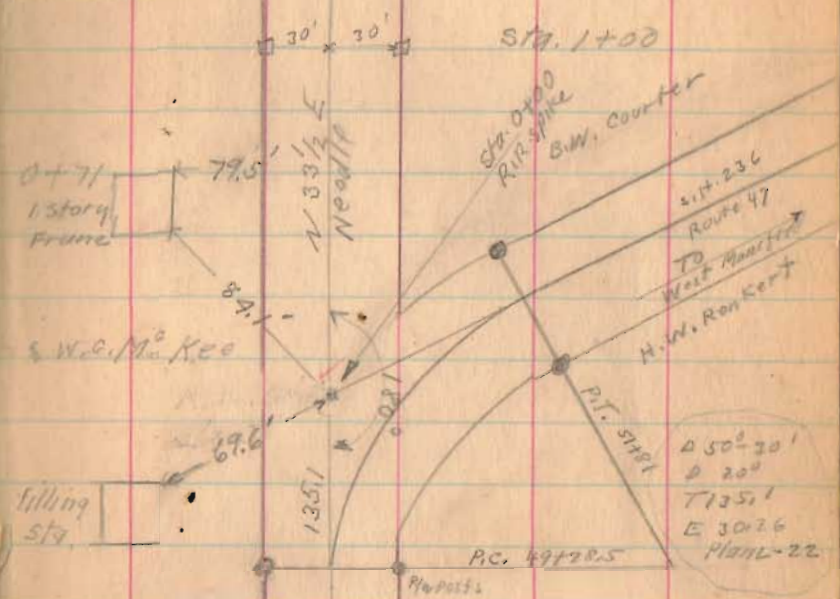
1545

INDEXED ON MAP

Feb - 20 1934  
cold - yes.  
Cranes  
and Cars  
Organ  
Path fields  
Hunt  
Running

N 33° 17' E

Monuments  
placed as shown  
30' from & for 60' Road





Road 9

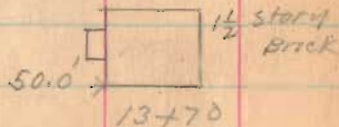
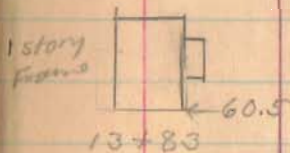
2-28-34

12

N 35 1/2° E  
Neddie

Harrow Tooth  
15+65 Angle  
01° 53' R.

14+50



Wm Chris  
13+13  
x  
Roy Alberts

N 33° - 17' E

10+50

6+80 Lane

Roy Alberts  
x  
6+75

1545

INDEXED ON MAP

Sta 5+00

Road 9

2-28-34 18

31+00

26+00

Roscoe Baldwin  
Lane

X X

25+45 Delaughder  
25+45

N 35° 10' E

51.0' ← → 1 1/2 story  
house 21+94

21+50

20+42 stone Arch

Delaughder

X X  
20+16

B.W. Courter

M.O. Entarline

X X

19+79

Wm. Ohns

16+00

N 35 1/2° E  
N 30° E

1545

INDEXED ON MAP



Road 9

2-28-37

N. 35° - 10' E

55+00

47+50

13 13

44+69 Stone Arch

43+78 E Drive

43+00

G. Hustlin  
Mo. Enterline  
37+58  
39+59

G. Hustlin  
R. Baldwin

1545

INDEXED ON MAP

37+00

2-28-34 10

Road 9

R/W Mon  
Sta. 68+00

1/2" bolt  
hex. nut  
Set  
Sta. 62+68.5

S. 68°-50' E.  
340.0'

88°-00'

1/2" bolt  
hex. nut  
Set  
Sta. 68+00

89°-30'

149.5'  
S. 17°-40' W

W. W. Windham  
to  
Don E. Edgington  
2.20 Acres

2082

INDEXED ON MAP

R/W Mon  
Sta. 61+00

N. 35°-10' E.  
204.67'  
S. 73°-01'

532.60'

S. 88°-53' W.  
472.7'

1/2" bolt  
hex. nut  
Set  
Sta. 58+95.5

Surveyed for

D. E. Edgington by  
D. E. Dodson  
V. E. Detrick  
April 4, 1932

1545

INDEXED ON MAP

N 35°-16' E

N 35°-16' E  
Needle

81+00

59195

76+16 & DRIVE

76+02

75+00

Found bent R.R.  
Splice - Replaced with  
1" iron pipe.  
6/7/61 D.E.T.  
D.H.L.

Iron  
70+00 Angle  
0° 06' Right

68+00

61+00

N. 35°-10' E

J.H. Elliott  
G Austin  
58+95



Road 19

W.W. Windham  
to  
Clarence Edgington

1/2" pipe 30" long  
set

C.H. 218  
Dug for  
stone  
No luck

R.R. Access

R/W Mon  
Sta. 85+50

INDEXED ON MAP

2082

Surveyed for  
C. Edgington by  
Dan E. Dodson  
Vinton E. Detrick  
April 4, 1958

R/W Mon  
Sta. 84+00

1/2" bold-hex. nut  
1 1/2" long set  
Sta. 84+3.8

1545

INDEXED ON MAP

2-28-3

105+00

Z.D. Shaffer

J.L. Kerr

99+53

99+00

93+00

90.0'

92+24

2 story  
Frame

Wilson Pitts

G.C. Meredith  
88+27

G.C. Meredith

Road 219 86+36.6

G. Austin

87+00

J.L. Kerr

J.M. Elliott

0° 22' At  
Iron  
86+36.6

(R.R. spike  
found 4-4-53  
D.E.D.)

85+50

N. 35°-38' E.

N 35°-16' E

Road 9

Crane  
Ed Carr  
Hatch  
Bugs  
Hunt  
Kenny

March - 1 - 1934

clear - Warner

17

Mon 121+20  
Iron  
1/2 story  
Frame  
120+23 ← 58.9 →

J. W. Lawrence  
S. Cordrey  
116+51

J. W. Lawrence  
x — x — 121+47

E. C. Balliett

121+09 A 17/2  
0° 12' Left

117+10

117+23  
60

30

115+50

N. 35° 38' E.

108 →

1/2 story Frame

119+13

Sarah Cordrey

111+93 — x — x  
W. Pitts

111+00

E. C. Balliett

x — x — 109+10

Z. D. Shaffer

105+64

x — x

+ Lane +

105+39

1545



Road 9

42.39  
32.14  
1025

1545

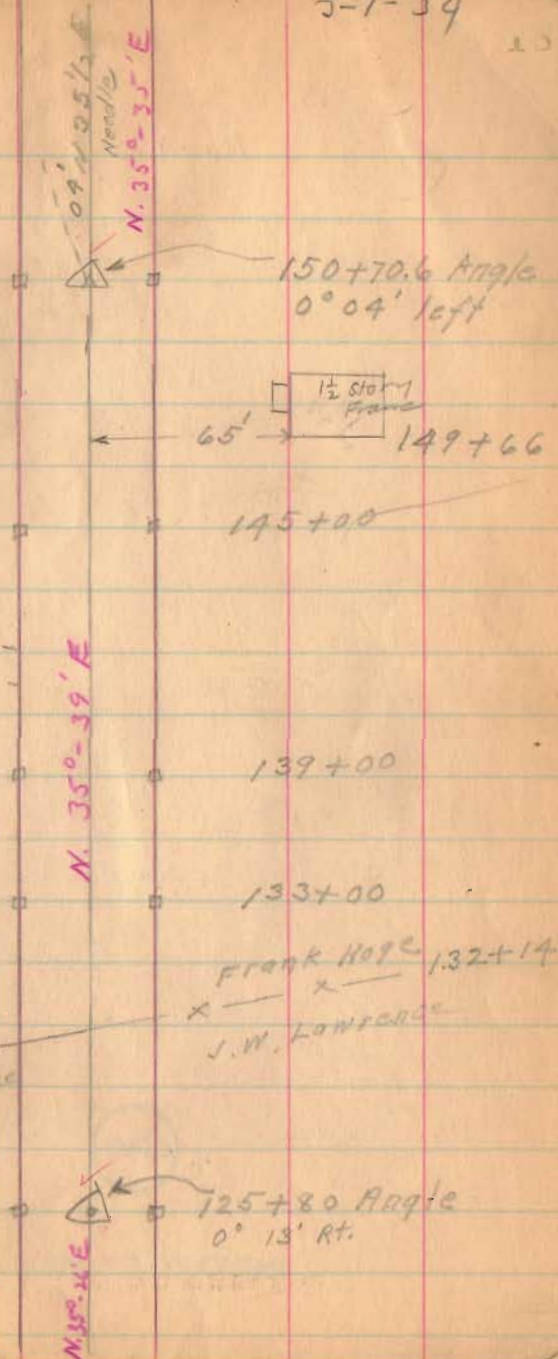
INDEXED ON MAP

5-1-34

23

Frank Hope  
142+64  
J. Austin  
142+39 Drive  
Sarah Cordrey

Sarah Cordrey  
J W Lawrence



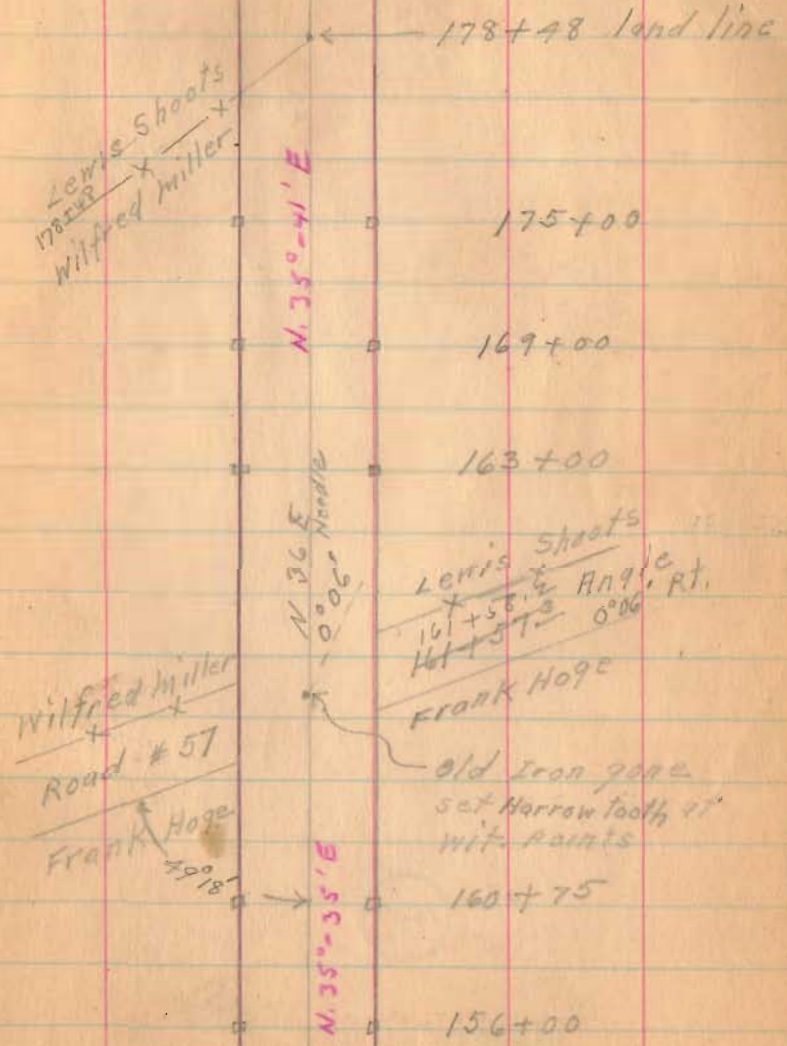
N. 35° 39' E

Road: -9

30.10  
18.20  
11.90

1545

INDEXED ON MAP







Road 9

221+00

215+00

1545

INDEXED ON MAP

3-1-34

21

Jas. Ansley  
A.E. Cordray 220+08

Jas. Ansley x  
218+47  
Road No. 222

To Mod  
city

218+04 x  
Frank Hoge



See pg. 64  
this book

N. 350+40' E

210+00

Frank Hoge 205+10  
x +  
L.D. Musselman

204+00

x + 199+66  
Lone x + 199+01

198+00

N. 325'  
Norda



Road 9

229+00

227+00

1545

INDEXED ON MAP

March 7-1934

cloudy - cold

Wright

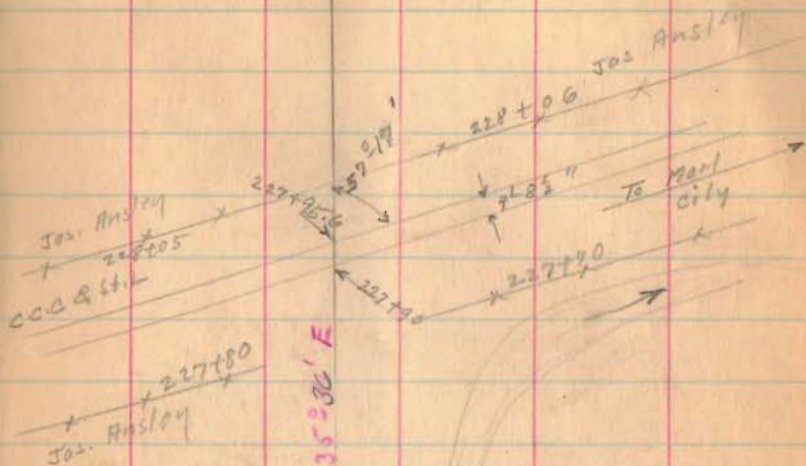
Mills

Richardson

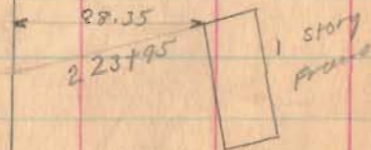
Ratfield

Henry

23



Iron  
222+95  
0.04



Road. 9

247+00

240+77

235+00

1545

INDEXED ON MAP

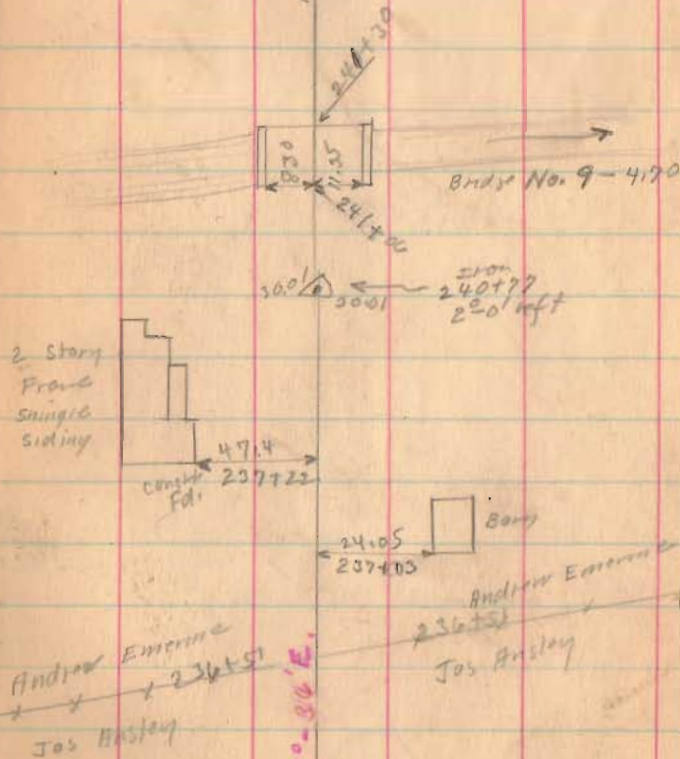
3-7-34

23

14106  
14077  
25

N. 33° - 36' E.

N 32 E.  
Needle



400 100 1000



Road 9

8163  
6961  
1202

281+63.5 90° Backsight

277+00

271+00

269+00

263+83.5

257+52

1545

252+00

INDEXED ON MAP

3-7-34

27

Large  
Mound

31.9  
Notch &  
Spikes  
2' above  
ground.

R.R. Spike  
269+61  
No Angle

Iron  
263+83.5  
3° 30' Left

History  
Front

N. 35°-38' E

N. 35° E

N. 35°-14' E.

N. 38°-44' E

N. 33°-36' E

RR Spike  
0-44' Right  
281+63.5

20°-25'

Frank M. Bardon

Book 560  
Page 57

100.0 Road  
Pugh

45.85  
5.531 E

11 P. Core

57.95  
50.81  
57.95

11 P. Core

269+46

50.02

11 P. Core

Frank M. Bardon

20.02

11 P. Core

Frank M. Bardon

20.02

Iron  
257+52

58.08' Right

72.50  
251+69

Road 9

304+00

left Only

299+00

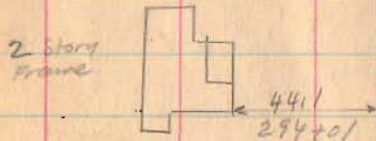
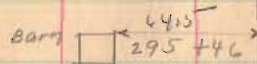
293+00

288+00

1545

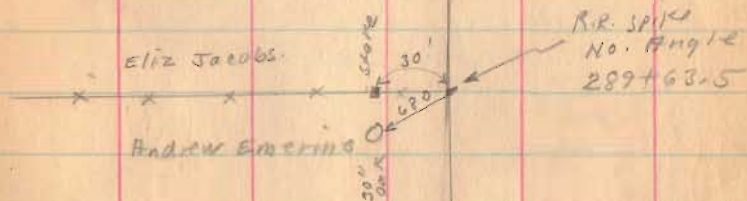
INDEXED ON MAP

89-04 20



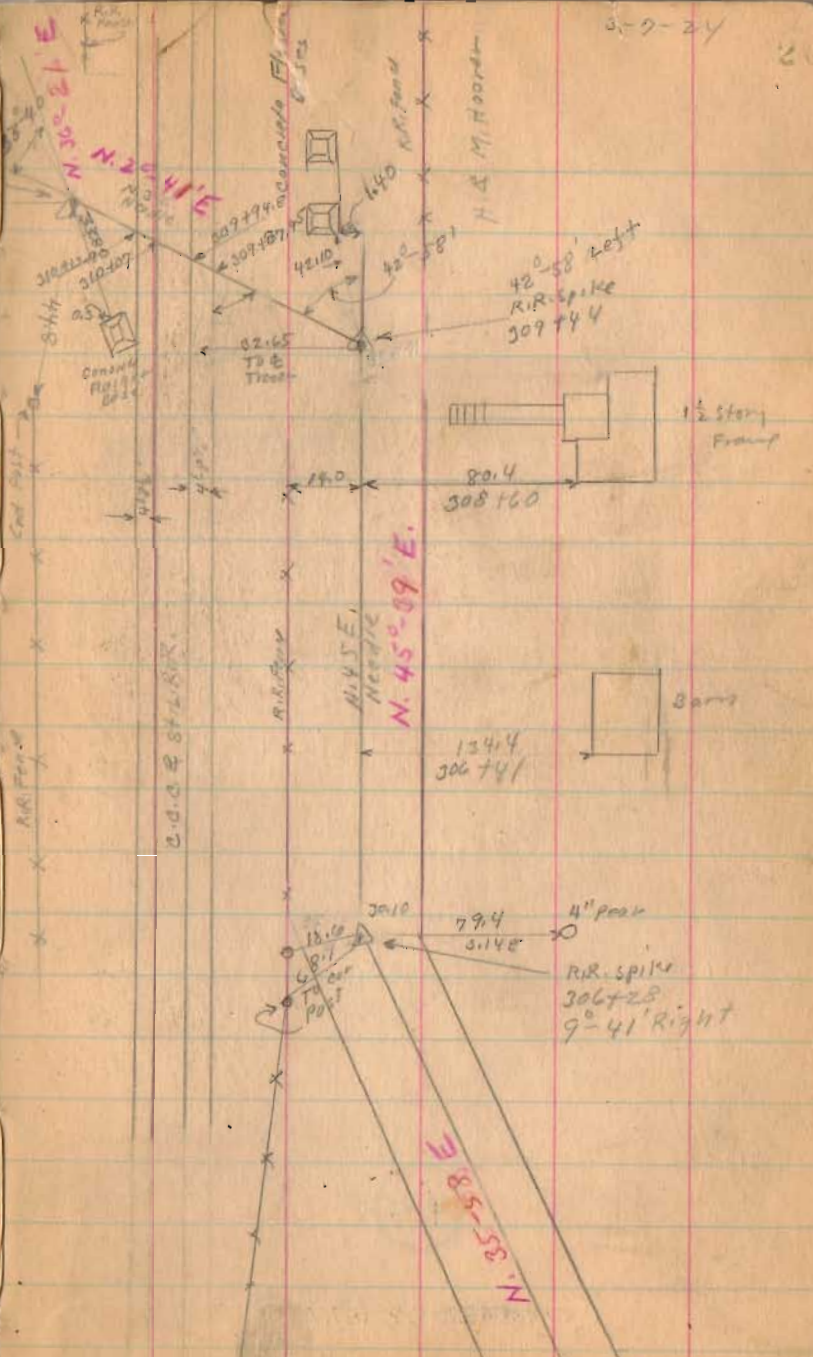
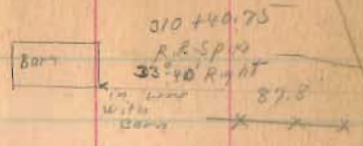
W. 35°-58' E

H. & M. Hooper  
302+57  
Lane 2  
Frank M. Borden





Road 9



311+00 left only

309+44 90° from Booksite Right Only

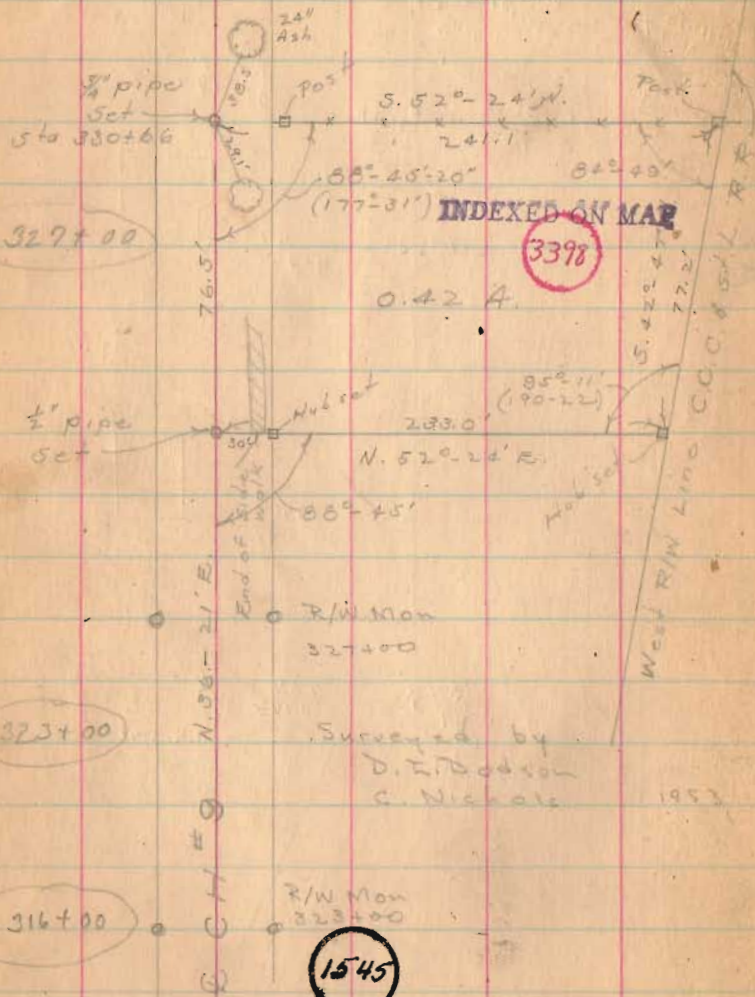
306+28 Right Only

1545

INDEXED ON MAP



Road 9

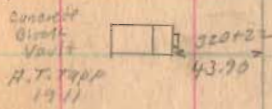
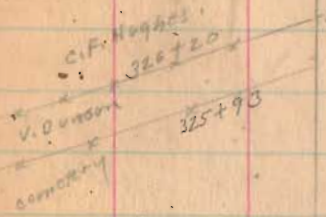


INDEXED ON MAP

3-9-24

329735

330266  
329+90  
End of water  
329+17  
Continued on Page 49



T.R. Cristen 316716.5

N. 36° - 21' E  
Heads

52  
01.  
Continued page 49



Road. 9



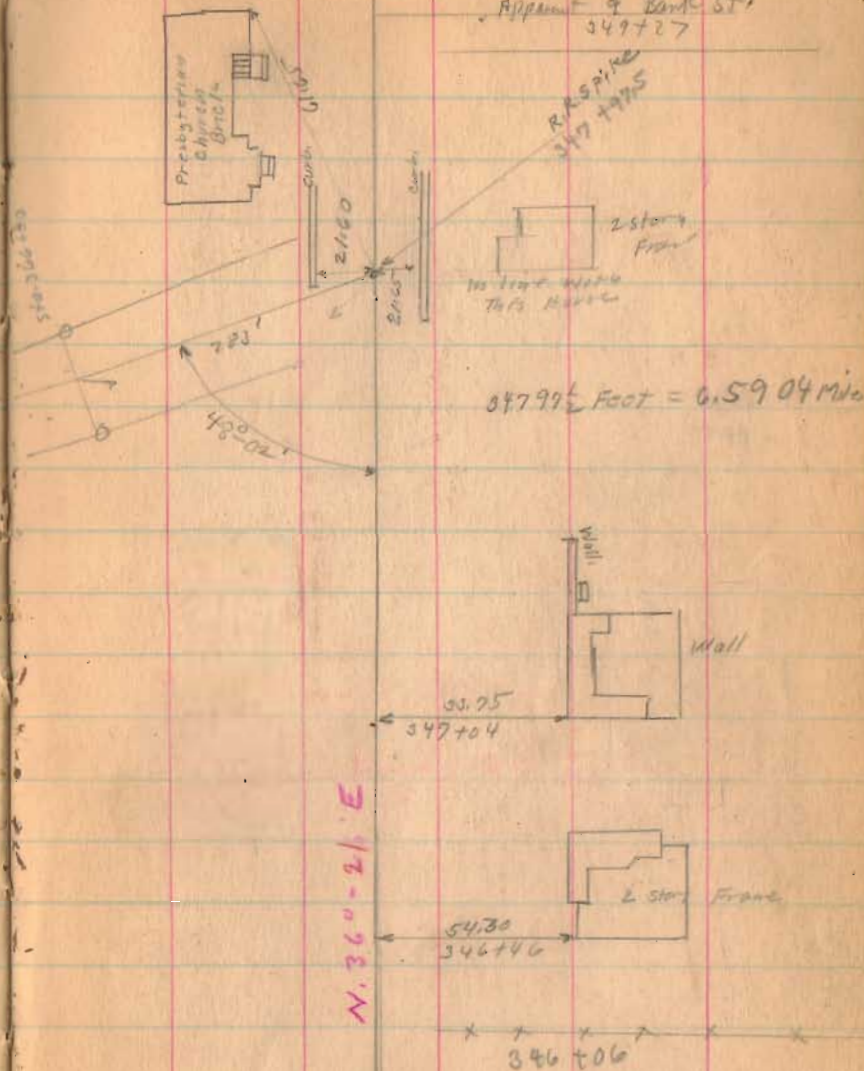
( See Book 501 for Street  
Survey Rutherford Co )

INDEXED ON MAP

1545

0-27-34

28



Sta. 330+00 TO 346+06  
See Pages 49 TO 52

Road 9

March 28-1934  
Year - odd 29  
Very Heavy steel  
Winged  
Mills  
Rathfelder  
Richardson  
Henry

Apparent &  
Rush St.

52+95  
Apparent &  
Euclid St.

N 36° - 21' E

1545

INDEXED ON MAP



Road-9

3-28-34

x 364+41 x

x 362+46  
CCC 294.

N 36°-21' E

x x 364+39 x (31)

x 362+02 x

vic. Piedmont.



Apparent to  
Miami Road.

358+35 & between  
Two Main Trunks

357+24  
Apparent to Rail Road St.

N 36°-21' E

1545

INDEXED ON MAP





Road 9

379+00

374+70

1545

INDEXED ON MAP

8-28-34

32

2 story  
Frame



109.40  
381+55

F.G. Leidigh

a.w. Snyder

381+30

E.E. Padon  
O.P. Snyder

115.10  
377+53



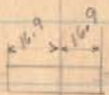
RESERVATION 376+11 ± WAS

L.O. W. Snyder  
Wm. Rollins

375+66

O.W. Snyder  
C.E. Waples

376+00



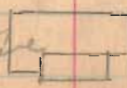
Stone 1924  
375+61

Burnt

374+22

Wm. Rollins  
372+70

2 story  
Frame



50.10  
372+53

N. 36-21 E.

Road 9

393+38

391+00

384+00

1545

INDEXED ON MAP

3-22-34

33

Iron  
393+38  
2<sup>nd</sup> 2<sup>nd</sup> Right

N 38°-53' E

N 36°-21' E

HONZO EMBROID  
394+81  
Clara Musselman

30+02  
35.90  
393+28  
Garage

53.40  
392+44  
1 story  
Frame

Clara Musselman  
388+87

F.G. Leidigh

389+69

Stone Arch  
389+25

HONZO EMBROID  
F.G. Leidigh

389+30  
111.0  
388+00

1 1/2 story  
Frame

High Mast  
384+91

386+00

F.G. Leidigh  
L.E. Paddock  
382+76

3-22-34



Road 9

415+00

409+00

404+00

399+00

1545

INDEXED ON MAP

8-28-34

37

N. 39-14 E.

50.00

406+60



1 1/2 story  
Frame

one  
stone cap  
gone



Stone Arch

Iron  
40 1/2 x 75  
0-21 Right

measured to  
wall not cap.

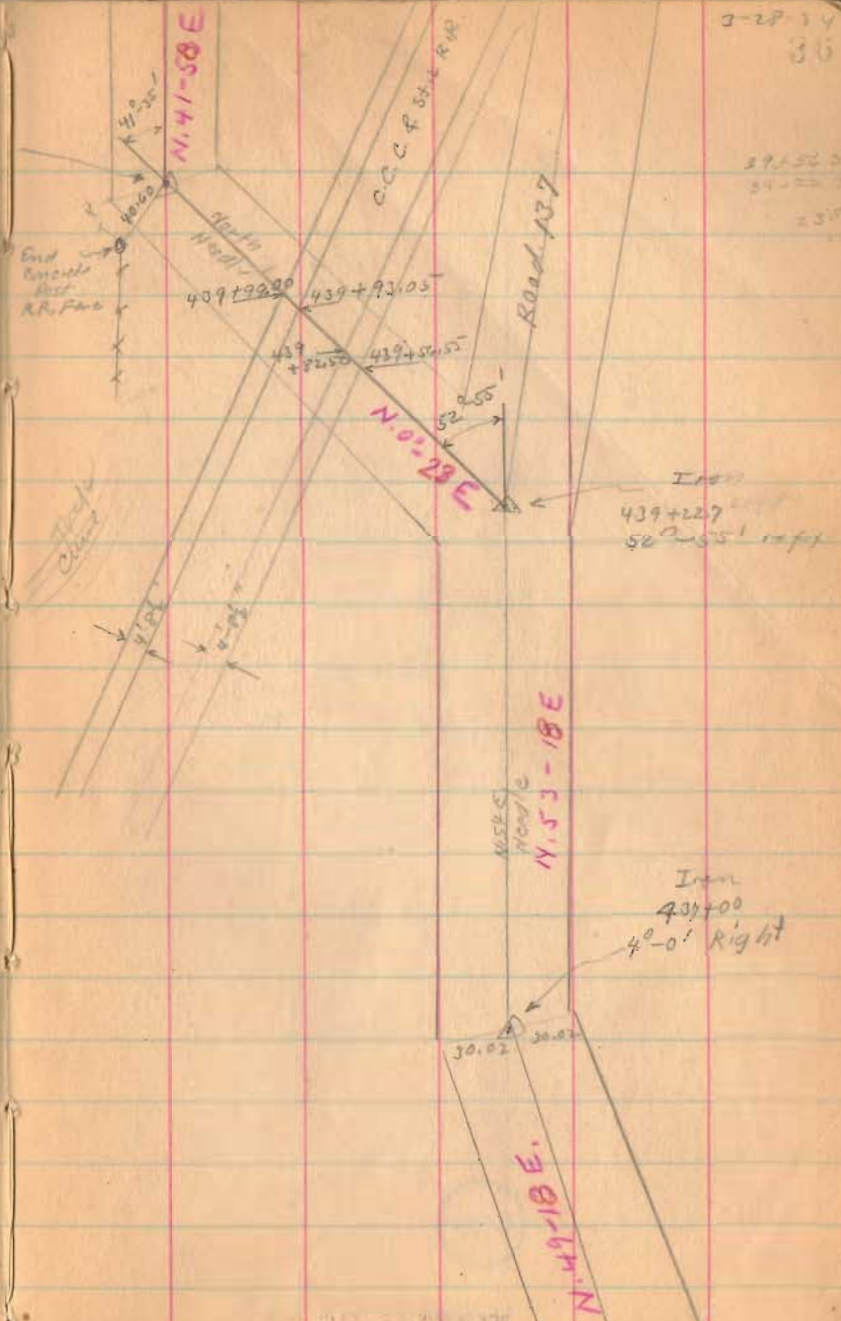
N. 38-53 E.





Road 9

Iron  
440+52  
41°35' Right



3-28-14  
36  
27-52-24  
34-11-17  
23'

440+52

Left Only 90° from fence

439+22.7

Right Only 90° from fence

437+00

Right Only

1545

INDEXED ON MAP

Iron  
439+22.7  
50°-55' right

Iron  
437+00  
4°-0' Right

30.02

M&E  
N.53-18E

N.49-18E

Road 9

446+00

441+00

Right Only

440+02

left only 90° from Box 518

439+00

Right Only

435+75

432+20

429+00

425+00

1545

INDEXED ON MAP

March 29 1934

Clear - Nice day

102 about gone

Wright

Mills

Ratcliffe

Richardson

Henry

NOTE:

Sta. 460+02 - OLD IRON BAR

FOUND BENT - REPLACED WITH

5/8" IRON BAR - APRIL 22, 1972

D.E.G.

460+02

Iron

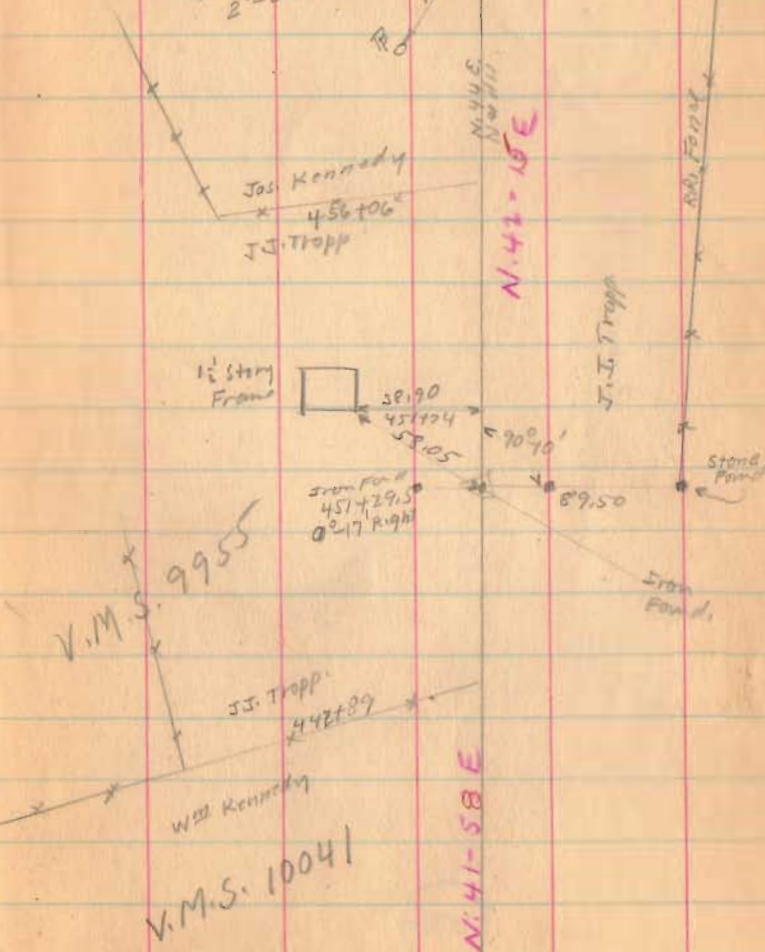
2'-03" left

N. 40-12E

R. Gibson

57.0'

460+02





Road 9

481+00

498+00

472+38

1545

INDEXED ON MAP

J.T. Titus

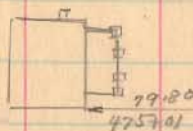
H.A. Robinson

480+44

480+85

lane

1 story  
Frame



N. 36-00-E

DO  
472+38  
42' 4 FT

N. 36-E  
N. 40-E

H. Robinson

R.R. Fagan

750  
LINE

H.A. Robinson

Jos. Kennedy

30.02

30.02

N. 40-12-E

R. Gibson

road. 9

493+08.5

488+00 left only

487+72 Right Only 90° Backsite

487+00 left only

1545

INDEXED ON MAP

(Emerging Survey 9-20-05)  
Book 384. Page 73

1 1/2 story  
Frame

8 1/2" x 6 1/2" Clms.

54.90

493+01

30.00

30.00

30.00

30.00

30.00

30.00

30.00

30.00

30.00

30.00

30.00

30.00

30.00

30.00

30.00

30.00

30.00

30.00

30.00

30.00

30.00

30.00

30.00

30.00

30.00

30.00

30.00

30.00

30.00

30.00

30.00

30.00

30.00

30.00

30.00

30.00

30.00

30.00

30.00

30.00

30.00

30.00

30.00

30.00

30.00

30.00

30.00

30.00

30.00

30.00

30.00

30.00

30.00

30.00

30.00

30.00

30.00

N. 31-59 E

N. 35-29 E

N. 36-00 E

Large White oak

495+16

Iron Found  
493 to 8.5  
3°-30' left

Stone Found

487+72

0°-31' left

Dalton Amrine

487+29

lane

487+58

Titus

Stone No. Angle  
487+72  
& lane

12" shell/bark  
Hickory

30  
487+90  
N. 79 E P.L. Brugler

J. Runner

48.00

488+94

1 1/2 story  
Frame

46.30

485+28

1 story  
Frame

3-25-24

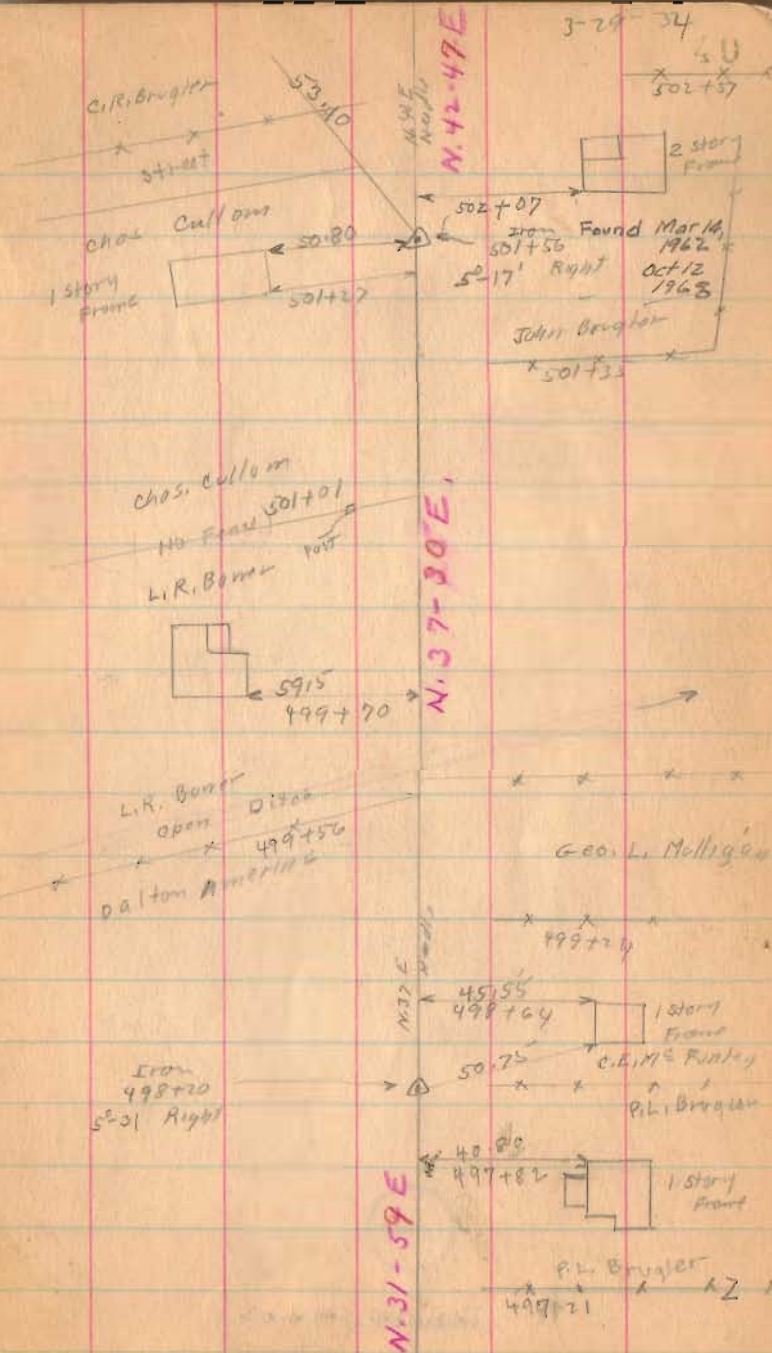
39



Road 9

1545

INDEXED ON MAP







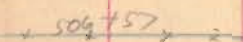
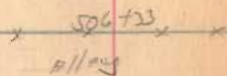
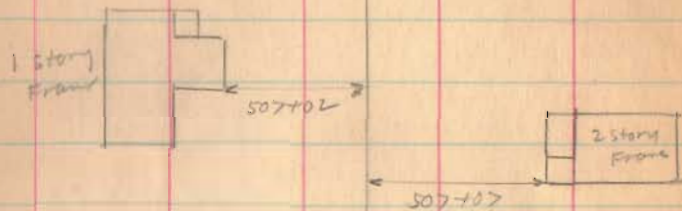
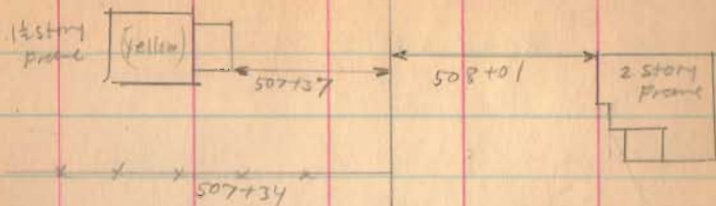
Road 9

1545

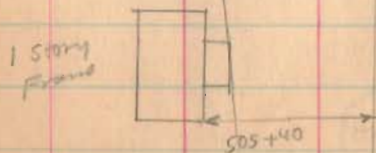
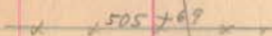
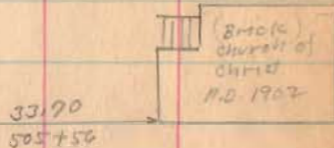
INDEXED ON MAP

3-29-34

23



N. 42-47 E.



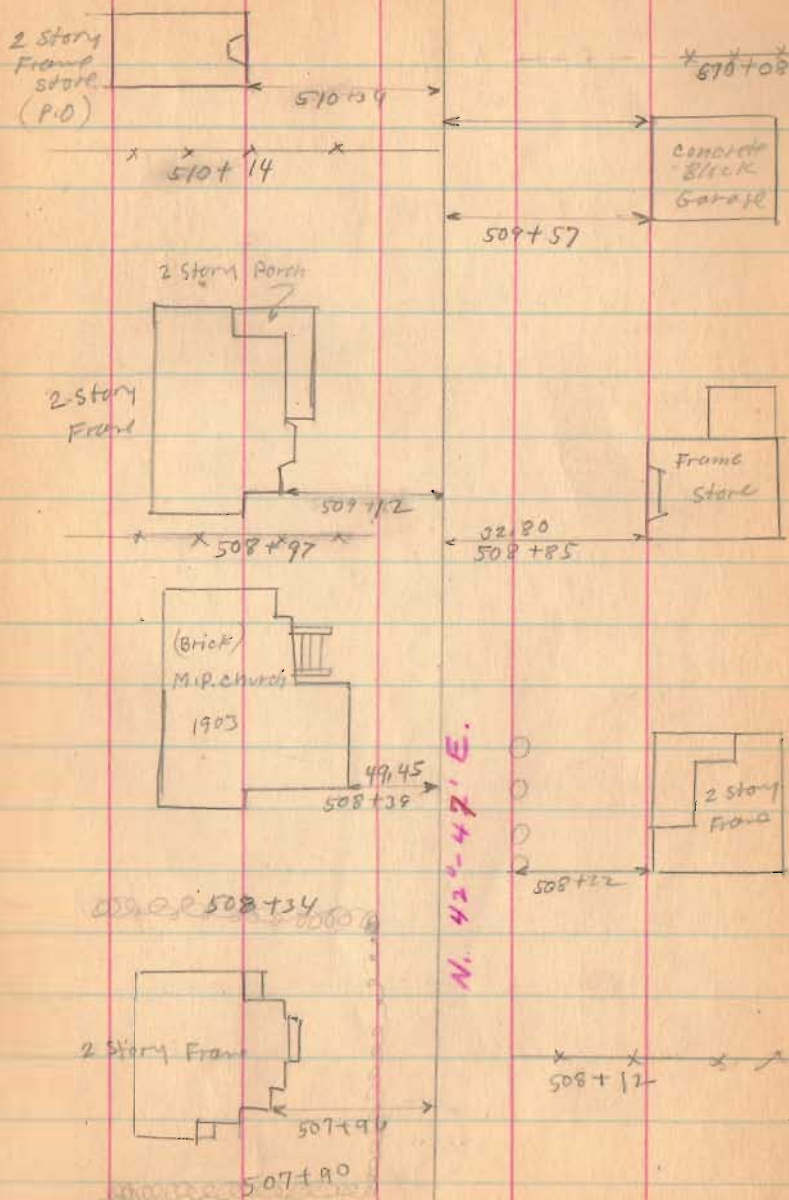
Road. 9

1545

INDEXED ON MAP

3-29-74

33



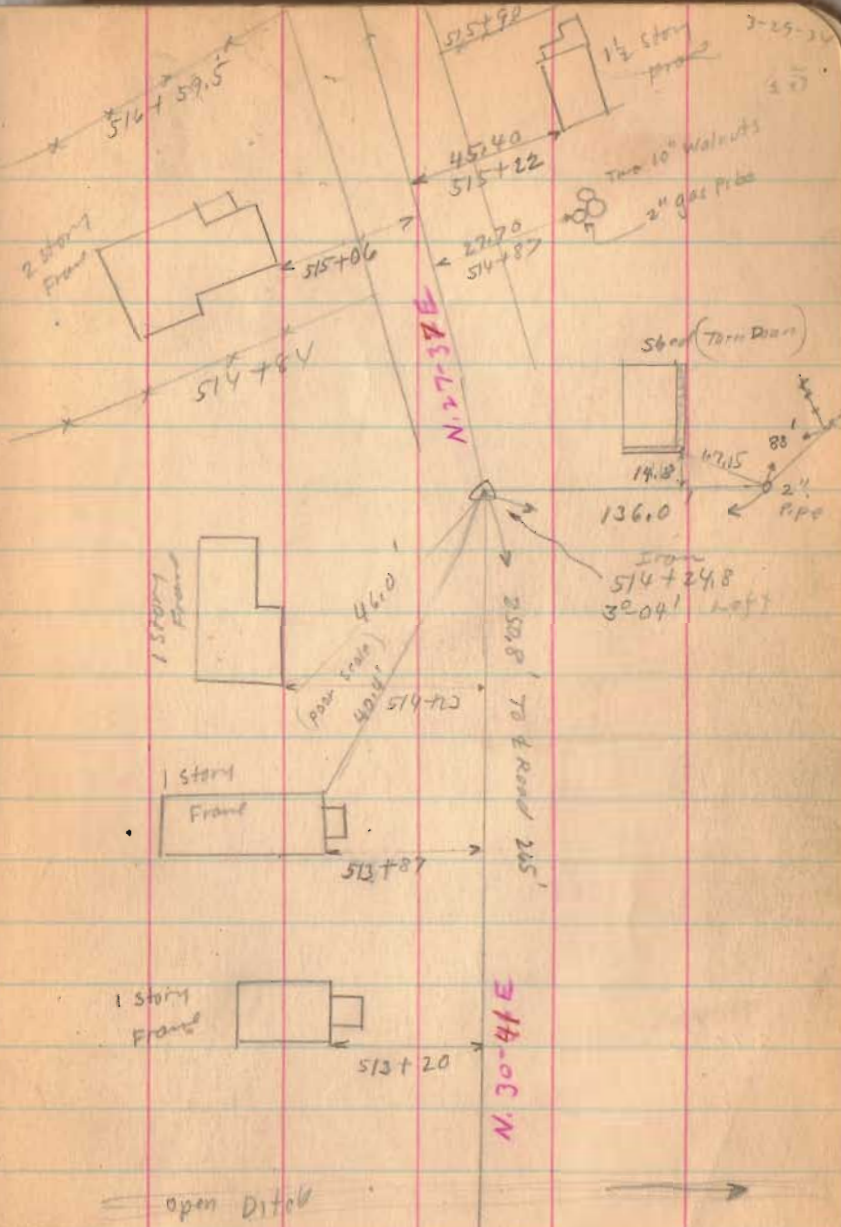




Road - 9

1545

INDEXED ON MAP







Road 9

526+24.5

526+33

522+85

522+93.5

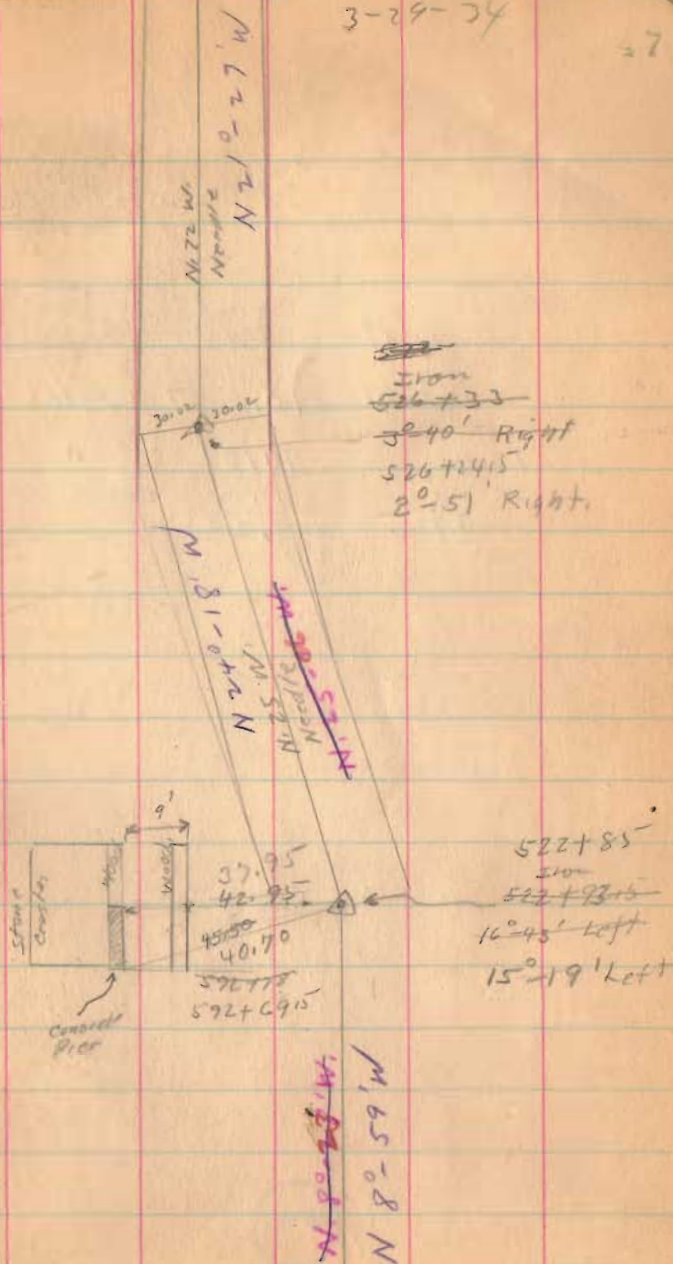
No Measurements  
No Stakes  
Too Much stone

1545

INDEXED ON MAP

3-29-34

27





Road. 9

Length  $53138\frac{1}{2}$  Feet  
~~53147~~ Feet

Length 10.0657 Miles

$\frac{10.06}{85}$   
9.21

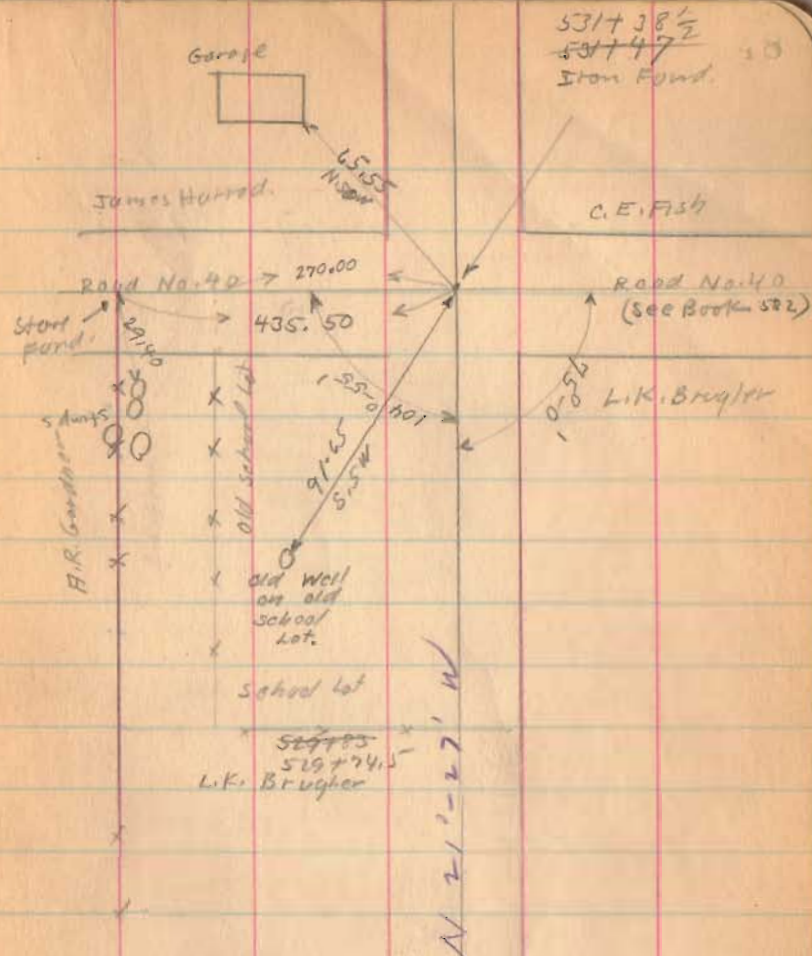
$\frac{10.07}{.85}$  " Deduct for Rushsylvania  
9.22

~~530750~~

530741.5

1545

INDEXED ON MAP



Road 9

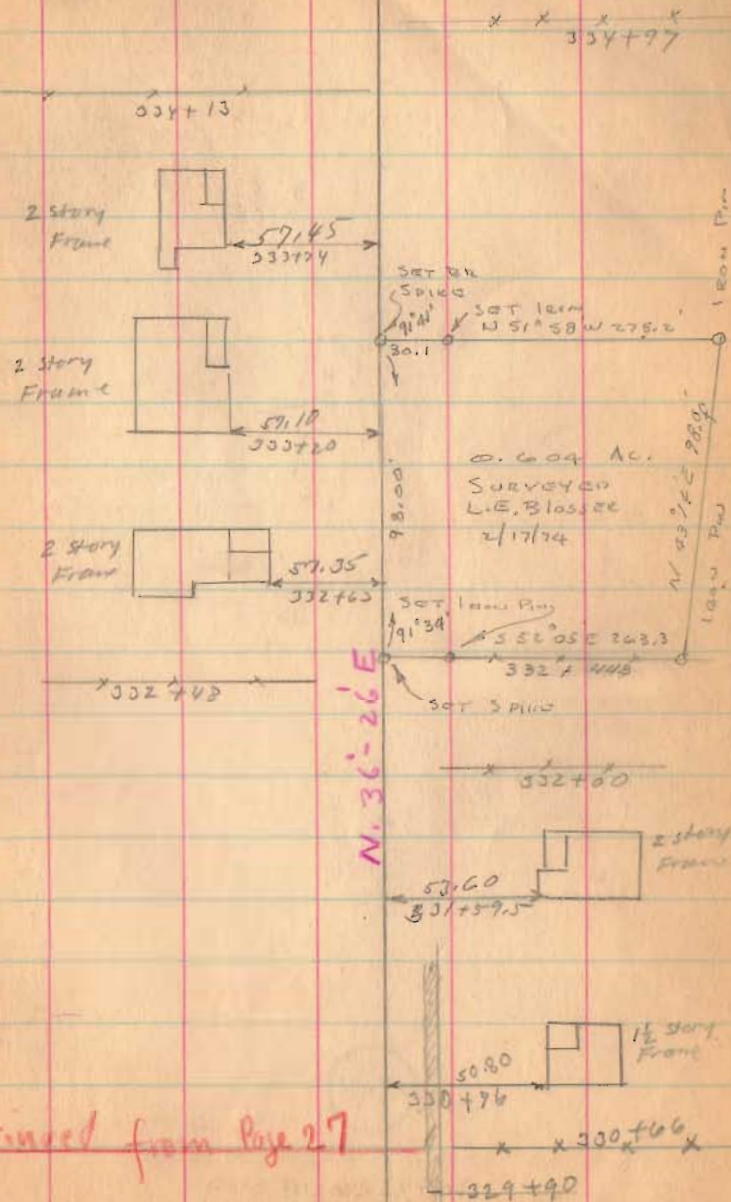
Continued from page 27

1545

INDEXED ON MAP

3-7-34

29



Continued from Page 27



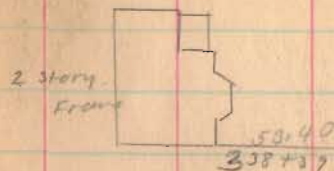
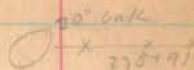
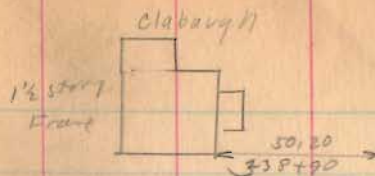
Road 9

15-45

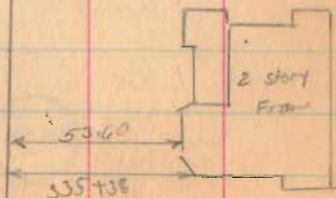
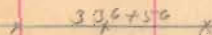
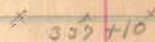
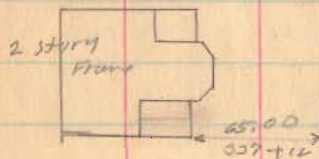
INDEXED ON MAP

3-7-34

50



N. 36° - 26' E.

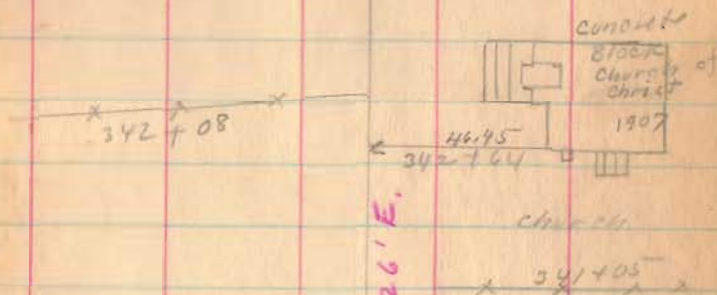
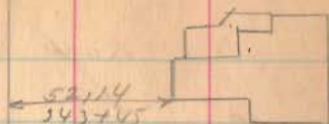
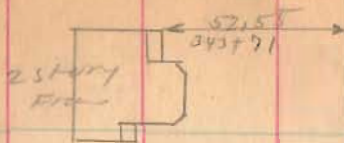


Road 9

1545

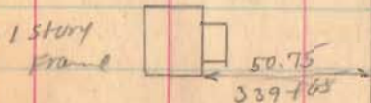
INDEXED ON MAP

51



340+21

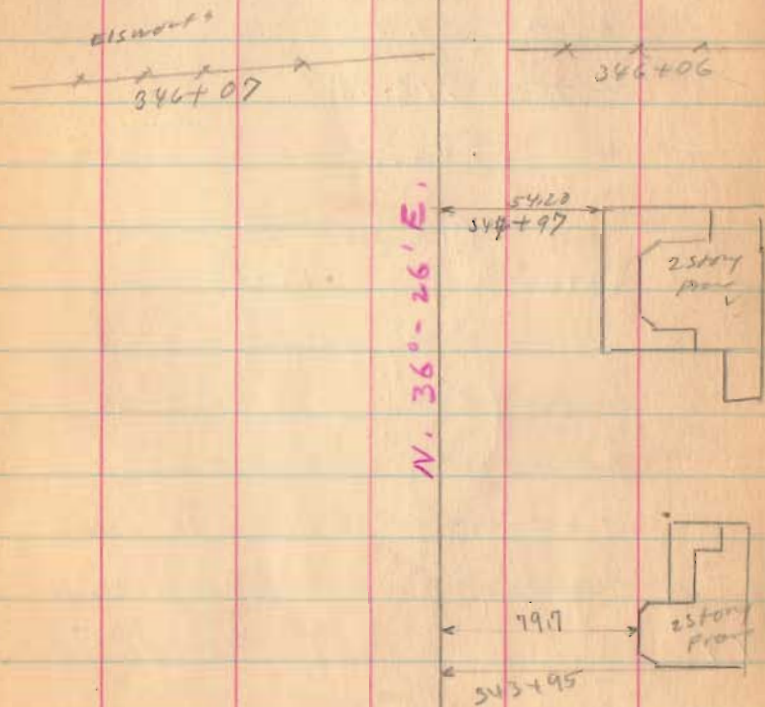
N. 36° - 26' E.





Road 9

Continued on Page 28.



1545

