

FB 602

Road. 29

Liberty - Monroe - Jefferson Twp.

See Book 511 Page 41  
for 1929 Survey.

Oct. 18, 1939 - Staked 60' - 30' R&L from E.

(4753)

(2700)

(400)

NW Post  
25' from E

1345

INDEXED ON MAP

Nov. 13, 1937  
F. Wright  
G. Wilges  
W. R. Wright

23

Yoid  
See Page 53

$\Delta = 15^{\circ} 54'$   
 $R = 716.07$   
 $E = 6.95$   
 $T = 100.00$

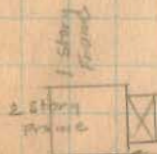
OK 34.80  
10' Apple

Iron  
3+53  
15° 54' Right

320 2500'

P.T. 2+53

6m. Post



40.90  
0+39

5.91-5.88  
5.77-011

500  
0+00

197.30

Ludlow Pike  
Road No. 1  
see Book 598  
Page 21

N 70° W  
Original  
C&M's land  
Page 13

5-15-17 E



(See page 53)

Road. 29

(22+00) Monuments (Hubs Set)

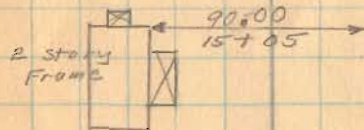
(17+00) Monuments (Hubs Set)

(12+00) Monuments (Hubs Set)

(7+00)

1345

INDEXED ON MAP



With Early

x x 10+95 x  
Patrick Fitzpatrick.

Patrick Fitzpatrick  
(old R.R.) 6+13

561-07E

W.H. Early  
6+13  
Geo. Foot

x x 25+00 x Z



FB 602

Road 29

19-12-37 25

(37+00) Monuments (Hubs Set)

(32+50) Monuments (Hubs Set)

(27+12) Monuments (Hubs Set)

(1345)

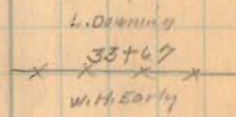
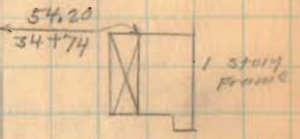
INDEXED ON MAP

56°-56'E

51°-05'-47"E

S. 64.5 E.  
N. 64.5 E.

561-07E



Don  
27+12  
0°-11' Right



FB 602

Road 29

10-12-37

26

(44+00) Monuments (Hub Set)

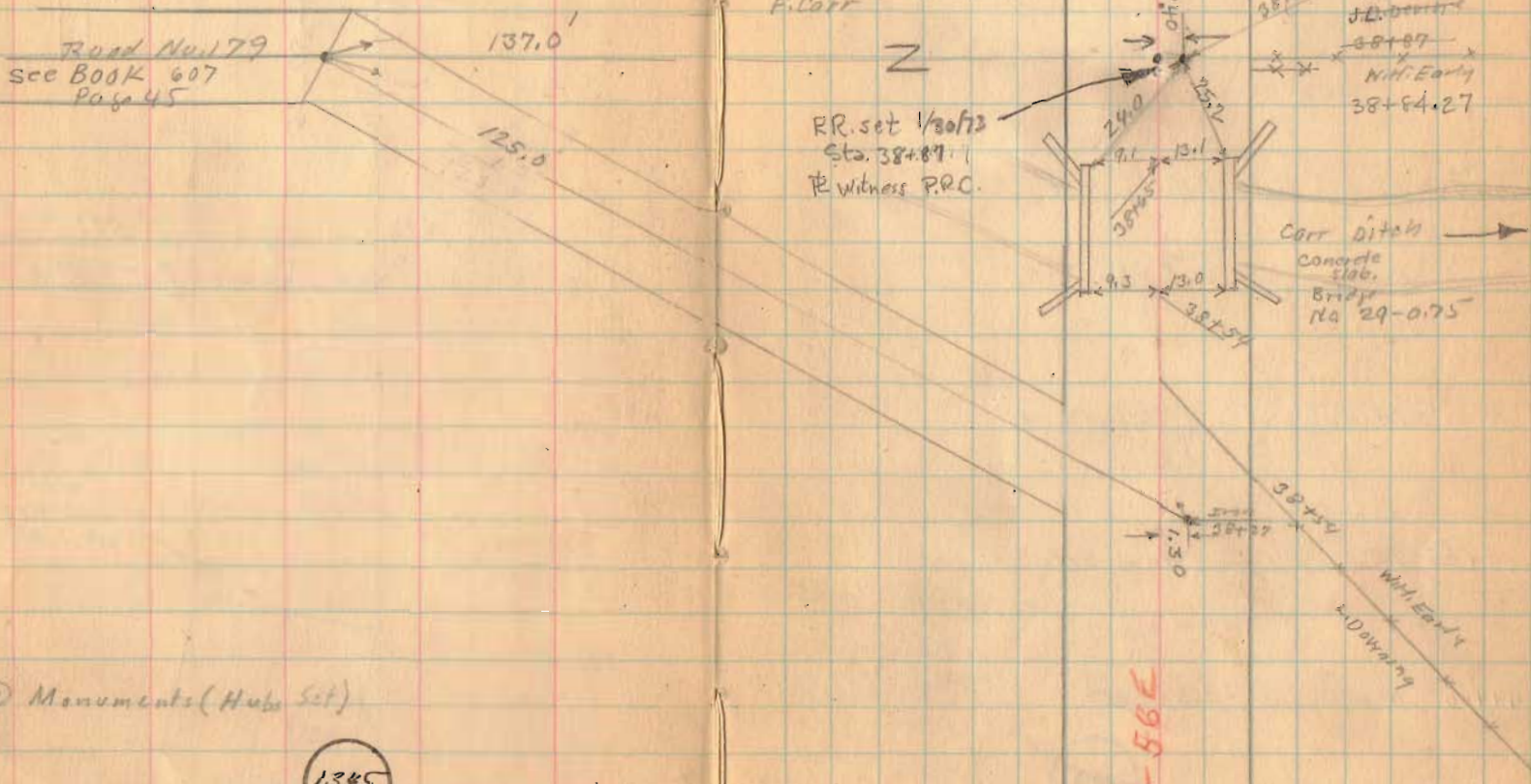
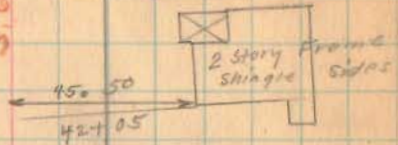
Road No. 179  
see BOOK 607  
Page 45

F. Carr

N

RR. set 1/2 of 13  
Sta. 38+87.1  
Witness P.R.C.

5.60-56E



(40+00) Monuments (Hub Set)

1345

INDEXED ON MAP

5.60-56E



FB 602

Road 29

62+75 Monuments (Hubs Set)

63+00 Monuments (Hubs Set)

58+25 Monuments (Hubs Set)

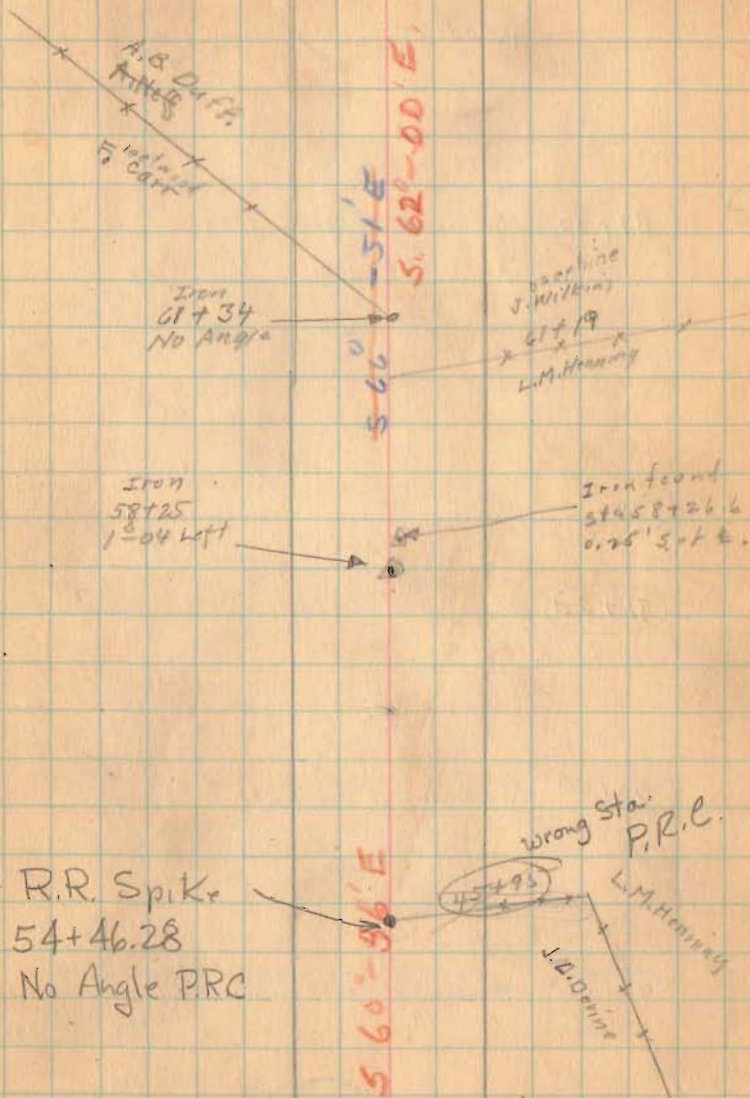
55+00 Monuments (Hubs Set)

49+00 Monuments (Hubs Set)

1345

INDEXED ON MAP

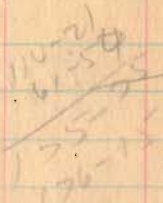
Nov. 15-1939 - 27  
Cloudy  
F. Wright  
G. Wright  
W.A. Wright



FB 602

Road 29

87+00 Monuments (Hubs Set)



85+00

Monuments (Hubs Set)

81+00

Monuments (Hubs Set)

Notes Sta. 70+00 to 70+14 - 1" Cor. N. Side

76+00

Monuments (Hubs Set)

71+00

Monuments (Hubs Set)

1345

INDEXED ON MAP

11-15-30

28

Hubs Found  
5/17/69  
Set 3/4" Bar  
on N. side Hub  
D.L.O. 85+67

No Angle

Susie H. Hester

Road 55  
Book 607  
Page 28

Henry

A. N. G. E.

Susie H. Hester

741

740

739

738

737

736

735

734

733

732

731

730

729

728

727

726

725

724

723

722

721

720

719

718

717

716

715

714

713

712

711

710

709

708

707

706

705

704

703

702

701

700

699

698

697

696

695

694

693

692

691

690

689

688

687

686

685

684

683

682

681

680

679

678

677

676

675

674

673

672

671

670

669

668

667

666

665

664

663

662

661

660

659

658

657

656

655

654

653

652

651

650

649

648

647

646

645

644

643

642

641

640

639

638

637

636

635

634

633

632

631

630

629

628

627

626

625

624

623

622

621

620

619

618

617

616

615

614

613

612

611

610

609

608

607

606

605

604

603

602

601

600

599

598

597

596

595

594

593

592

591

590

589

588

587

586

585

584

583

582

581

580

579

578

577

576

575

574

573

572

571

570

569

568

567

566

565

564

563

562

561

560

559

558

557

556

555

554

553

552

551

550

549

548

547

546

545

544

543

542

541

540

539

538

537

536

535

534

533

532

531

530

529

528

527

526

525

524

523

522

521

520

519

518

517

516

515

514

513

512

511

510

509

508

507

506

505

504

503

502

501

500

499

498

497

496

495

494

493

492

491

490

489

488

487

486

485

484

483

482

481

480

479

478

477

476

475

474

473

472

471

470

469

468

467

466

465

464

463

462

461

460

459

458

457

456

455

454

453

452

451

450

449









FB 602

Road 29

~~111+00~~

108+00 Monuments (Hubs Set) end of Project.

~~100+00~~

103+00 Monuments (Hubs Set)

~~100+02~~

Tap Hubs Mon Set

~~100+00~~

1345

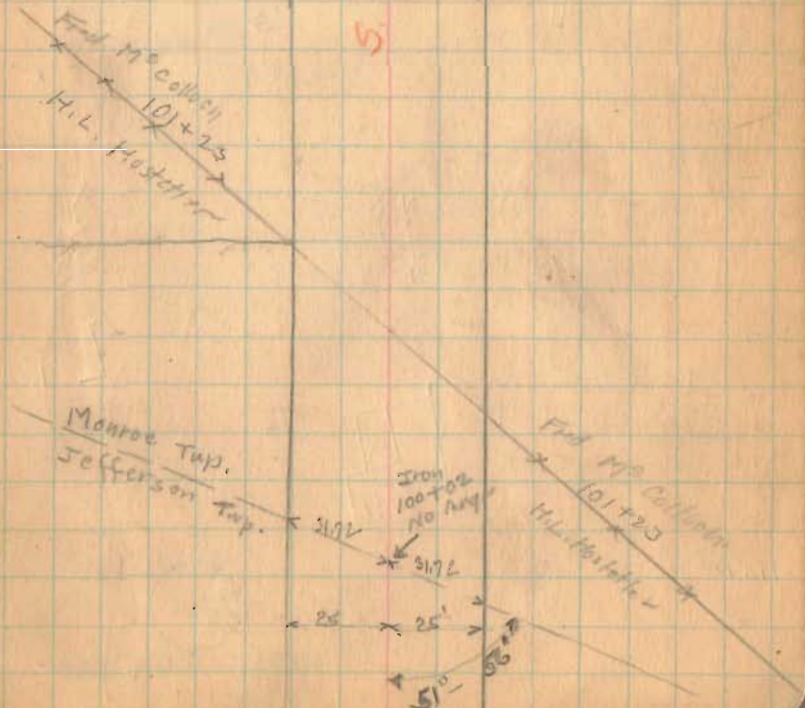
INDEXED ON MAP

11-15-37

31

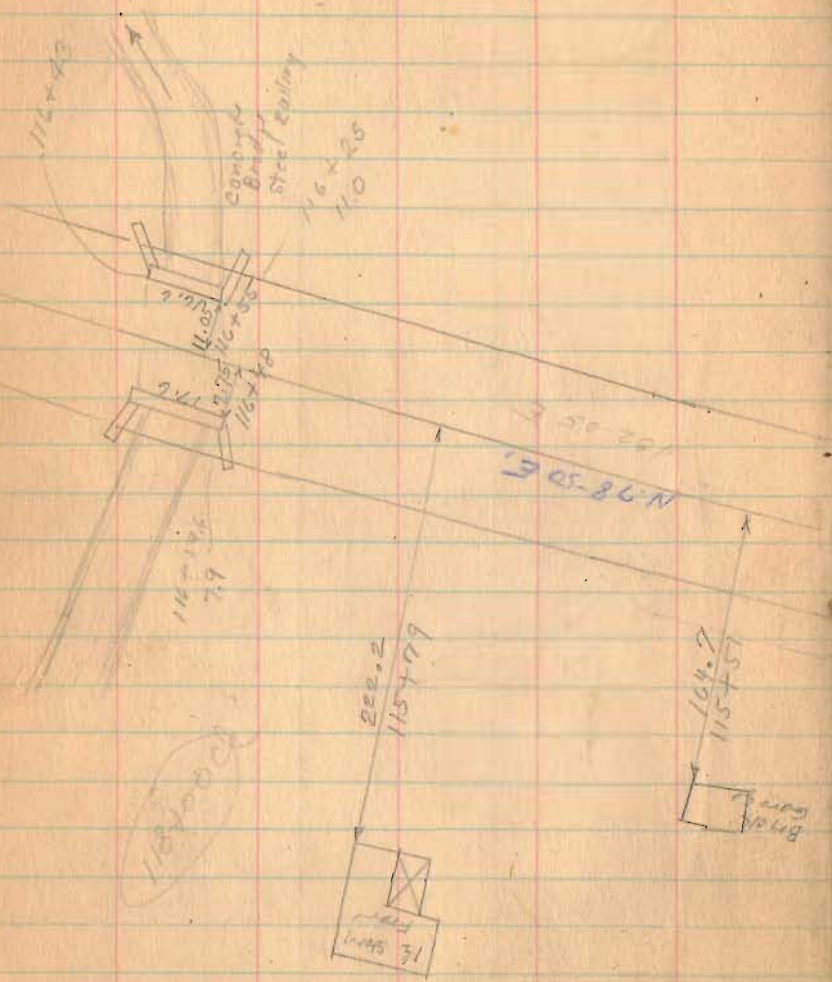
90  
2  
3

S. 83° - 46' E.



FB 602

Road 29



115400

1345

INDEXED ON MAP

11-15-37

$$\begin{array}{r} 11291 \\ 10123 \\ \hline 1173 \end{array}$$

$$\begin{array}{r} 11291 \\ 12125 \\ \hline 245.5 \end{array}$$

11256



Field McCulloch

112+56

Part R.G. Sides 5 mgcs

$$\begin{array}{l} 62^{\circ} 38' 00'' \\ (125^{\circ} 16' 00'') \end{array}$$

Hub  
 62 643' left  
 112+48.5

Part R.G. Sides 5 mgcs

112+40

Field McCulloch

~~S 38-30 E~~  
 S 33-46 E



FB 602

Road 29

127+00

126+00

125+00

123+00

120+00

123+57.2

1345

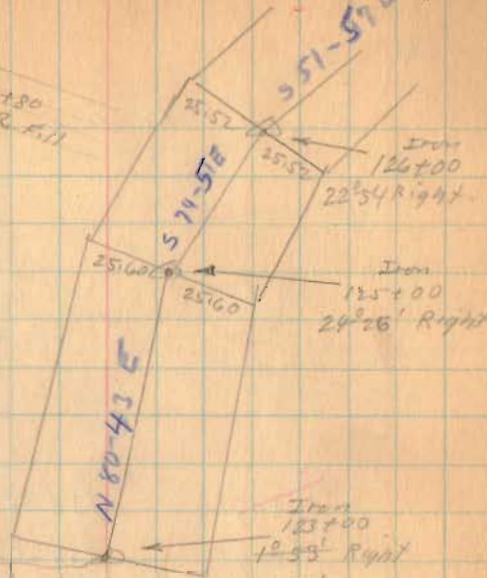
INDEXED ON MAP

123 W  
116 SE  
684

11-15-37

33

125+80  
Old RR 4.11



122+70.8

Paul  
As. Sidwinger

118+97

119+25

Walter

Lane

118+86

Fred M<sup>c</sup>Collogh

Paul  
As. Sidwinger

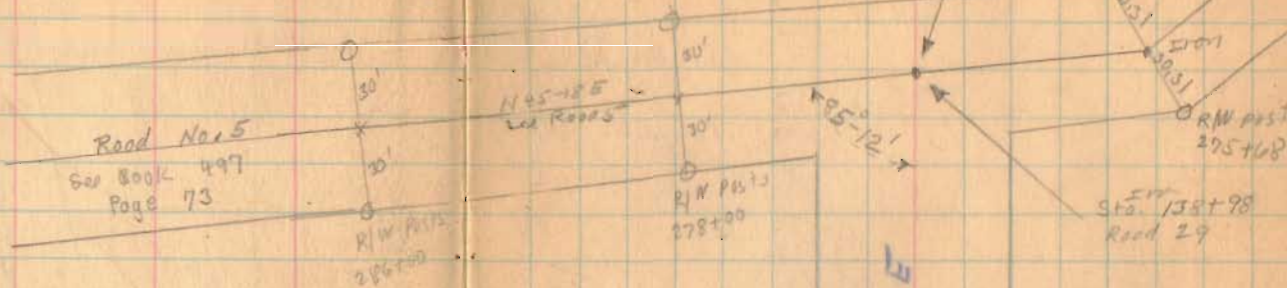
118+19

Fred M<sup>c</sup>Collogh

N 78-50 E

FB 602

Road 29



Length 13898 Feet  
Length 2.6322 Miles  
Length 2.63 Miles

138+00

134+00

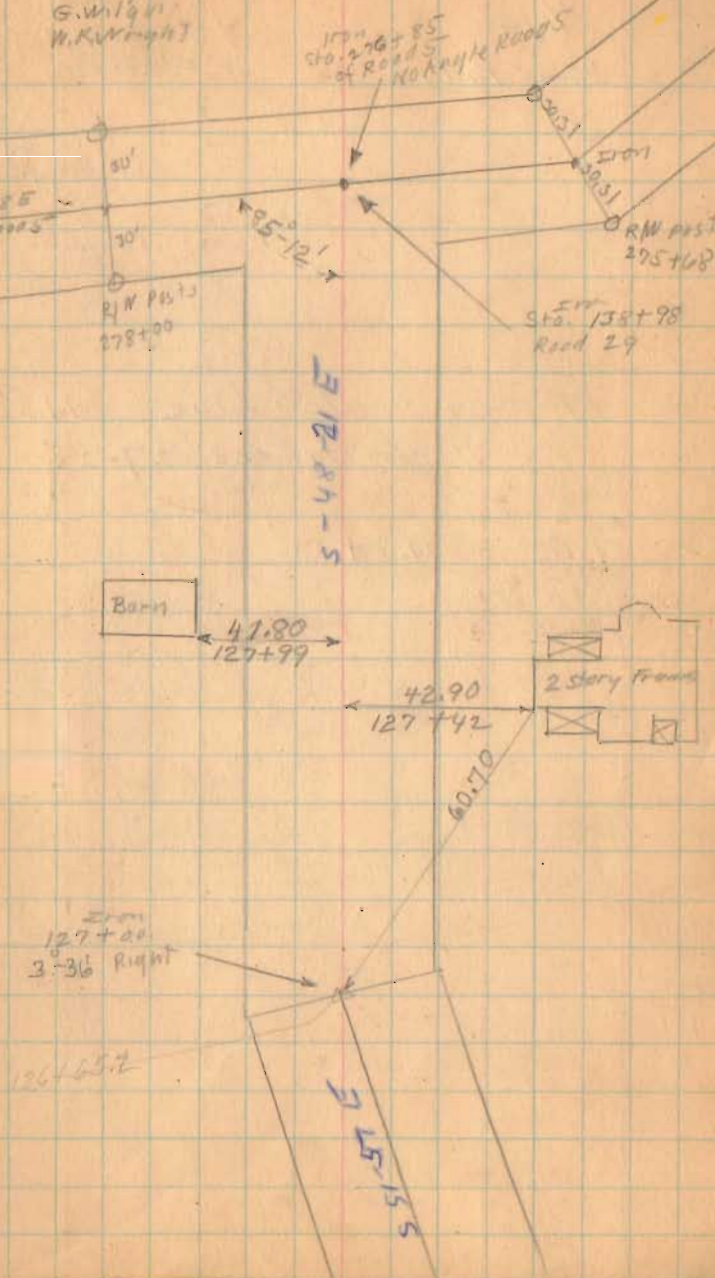
1345

130+00

INDEXED ON MAP

Nov. 16, 1937  
cloudy - Light Rain  
F. Wright  
G. Wilgus  
W. K. Wright

34





FB 713

C.B. 29  
Jefferson Twp.  
Logan Co., Ohio

99+95.95 - P.O.T. - Fd. 1/2" dia. iron  
bar in monument box - Twp.  
Line - Ref: F.Bk. # 402, pg. 31  
& plan X-29

93+17.11 - P.O.T. - Fd. R.R. Spike -  
S.E. corner 14.08 Ac. tract -  
(R-5277)

90+98.81 - P.O.T. - Fd. R.R. Spike -  
N.E. corner 3.573 Ac. tract -  
(R-5005)

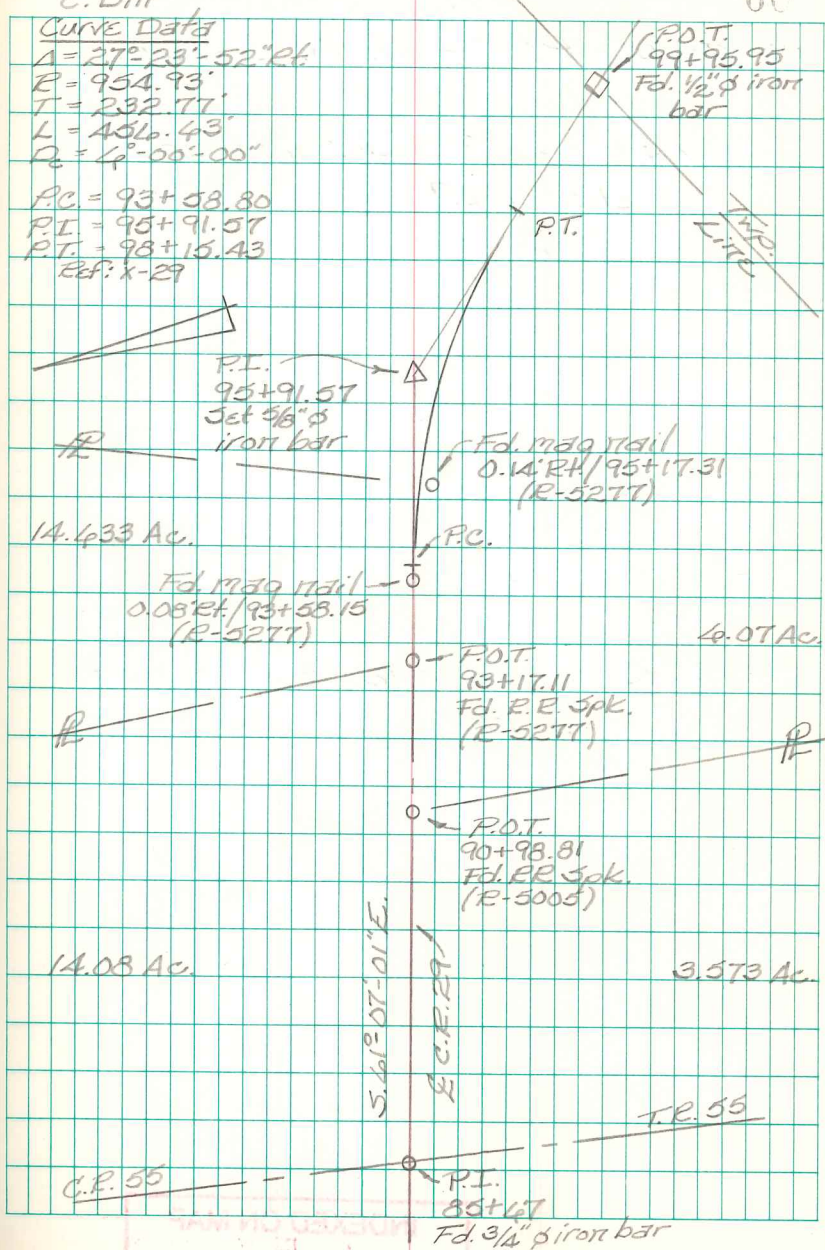
85+47 - P.I. - Fd. 3/4" dia. iron bar ≈  
14" deep - start of this survey -  
Ref: F.Bk. # 402, pg. 28.

INDEXED ON MAP  
1345

B. Simmons  
G. Dappert  
C. Dill

Dec. 2014

60



FB 713

C.R. 29  
Morroe Twp.  
Logan Co., Ohio

113+75.59 - P.O.T. - Set R.R. Spike

112+41.43 - P.I. - Fd. 1" dia. iron bar -  
Ref: F.Bk. # 4666, pg. 32 &  
X-29A.

42°-40'-02" Lt.

111+07.27 - P.O.T. - Set R.R. Spike

108+19.14 - P.O.T. - Fd. mag nail -  
N.W. corner 3.463 Ac. tract

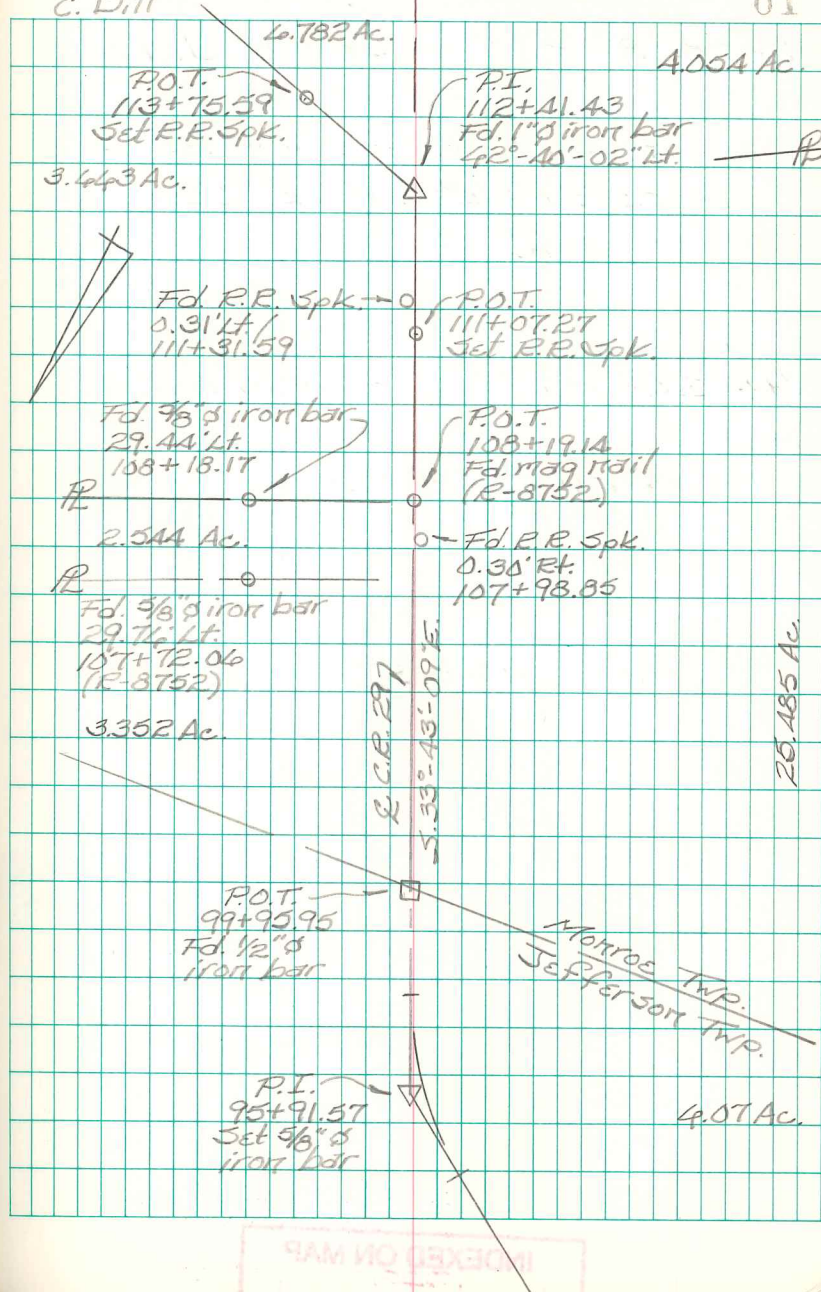
99+95.95 - P.O.T. - Fd. 1/2" dia. iron  
bar in monument box. - Twp.  
Line - Ref: F.Bk. # 402, pg. 31  
& X-29.

INDEXED ON MAP  
1345

B. Simmonds  
G. Dappert  
C. Dill

Dec. 2014

61



INDEXED ON MAP



FB 713

C.E. 29  
Marion Twp.  
Logan Co., Ohio

122+89.82 - P.I. - Set  $\frac{5}{8}$ " dia.  
capped iron bar - shown  
as sta. 123+00 in F.Bk. #602,  
pg. 33. - Ref: F.Bk. #666, pg. 33  
3°-57'-19" Rt.

119+15.38 - P.O.T. - Fd. mag nail -  
S.E. corner 5.062 acre  
tract (R-8752).

116+34.20 - P.O.T. - Fd. mag nail -  
S.W. corner 5.062 acre  
tract (R-8752).

113+75.59 - P.O.T. - Set R.R. Spike

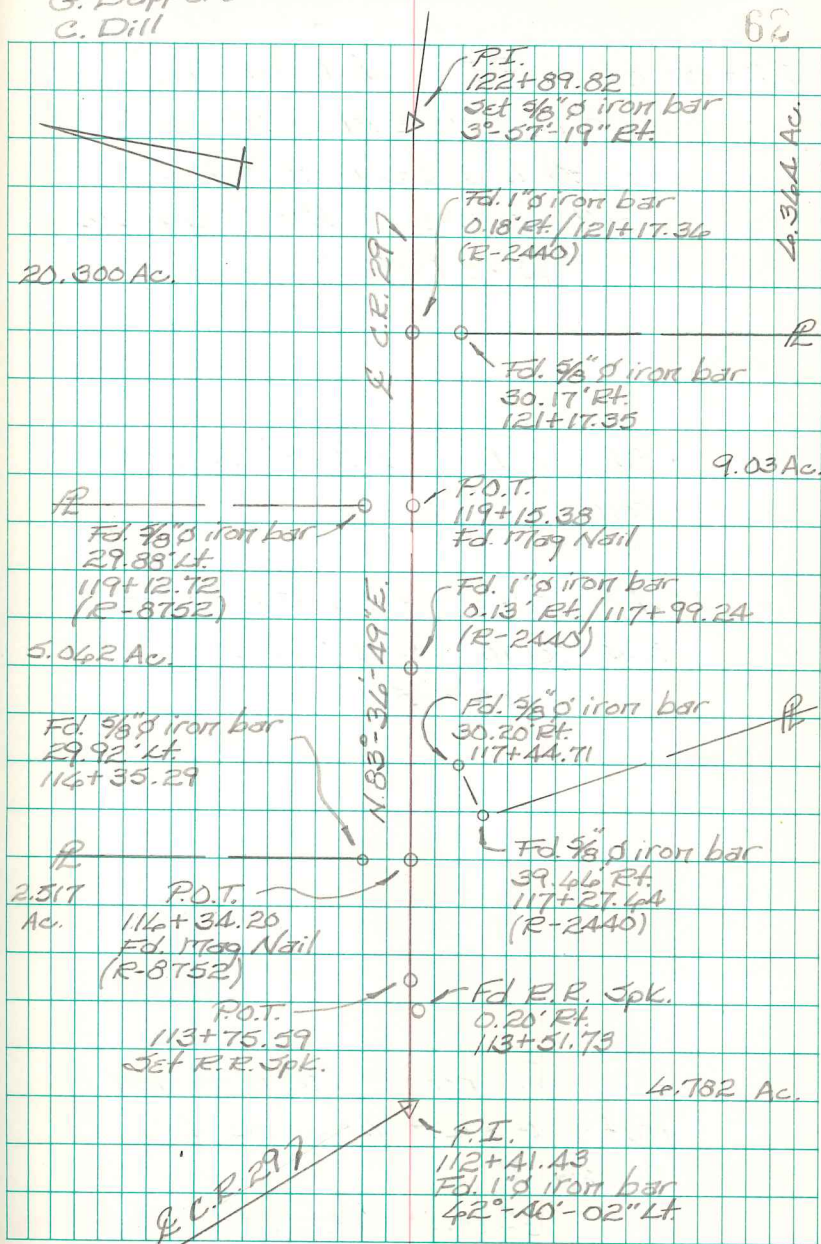
112+41.43 - P.I. - Fd. 1" dia. iron bar -  
Ref: F.Bk. #666, pg. 32 &  
X-29A.  
42°-40'-02" Lt.

INDEXED ON MAP  
1345

B. Simmons  
G. Dappert  
C. Dill

Dec. 2014

62





FB 713

C.R. 29  
 Monroe Twp.  
 Logan Co., Ohio

125+89.40 - P.I. - Fd. bent  $\frac{1}{2}$ " dia.  
 iron bar here in 1989 - replaced  
 w/  $\frac{5}{8}$ " dia. capped iron bar  
 at that time - shown as sta.  
 124+00 in F.B.K. # 402, pg. 33  
 $22^{\circ}-54'-57"$  Rt.

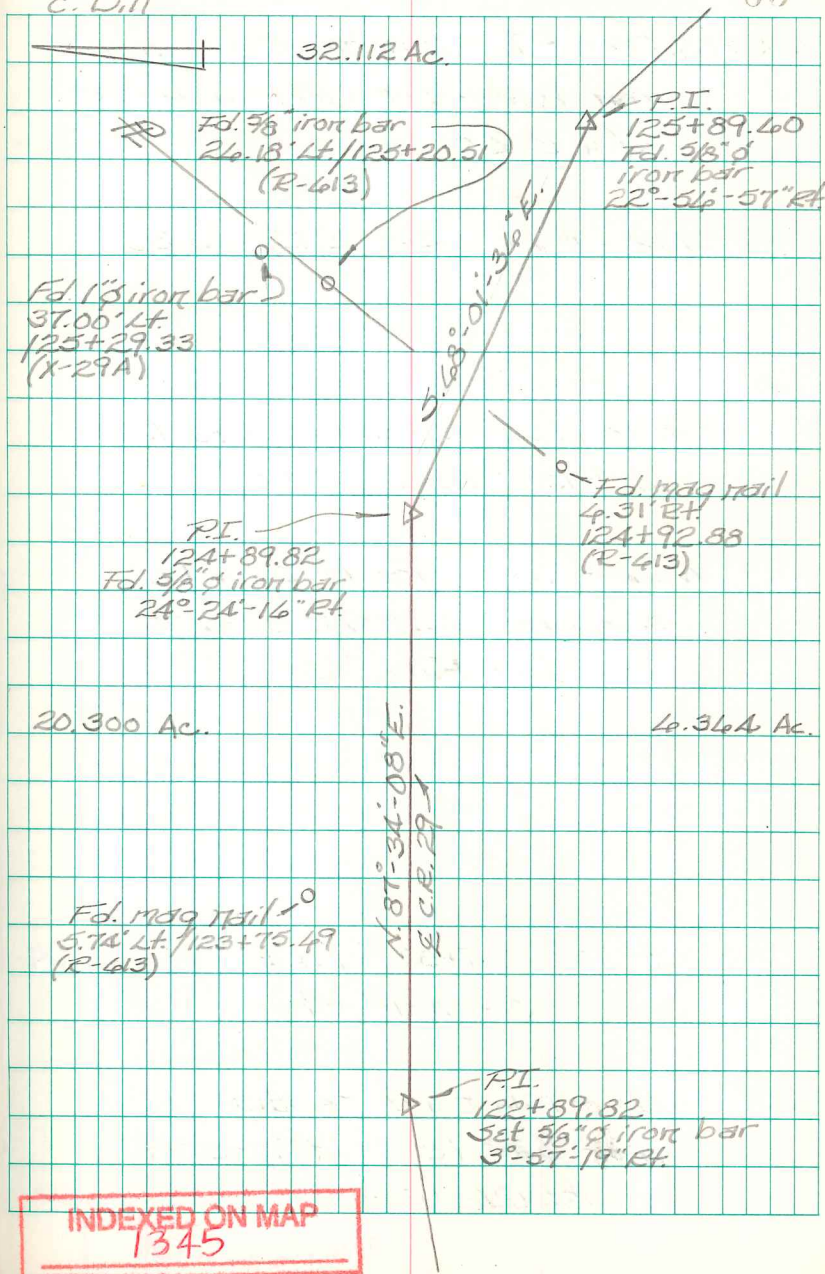
124+89.82 - P.I. - Fd. bent  $\frac{1}{2}$ " dia.  
 iron bar here in 1989 - replaced  
 w/  $\frac{5}{8}$ " dia. capped iron bar at  
 that time - shown as sta.  
 125+00 in F.B.K. # 402, pg. 33  
 $24^{\circ}-24'-14"$  Rt.

122+89.82 - P.I. - Set  $\frac{5}{8}$ " dia.  
 capped iron bar - searched  
 here for iron in 1989, found  
 nothing - shown as sta.  
 123+00 in F.B.K. # 402, pg. 33  
 $3^{\circ}-57'-19"$  Rt.

B. Simmons  
 G. Dappert  
 C. Dill

Dec. 2014

63





FB 713

C.R. 29  
Morrow Twp.  
Logan Co., Ohio

138+87.23 - P.I. - Set  $\frac{5}{8}$ " dia. capped  
iron bar - Intersection E C.R. 5  
w/ C.R. 29

138+57.12 - P.O.T. - Set R.R. Spike

134+24.42 - P.O.T. - Fd. common nail  
on split of R/W monuments -  
 $\approx 10$ " deep - Shown as Sta. 134+00  
in F.Bk. # 4666, pg. 36.

130+24.16 - P.O.T. - Fd. R.R. Spike -  
 $\approx 8$ " deep - Shown as Sta.  
130+00 in F.Bk. # 4666, pg. 36.

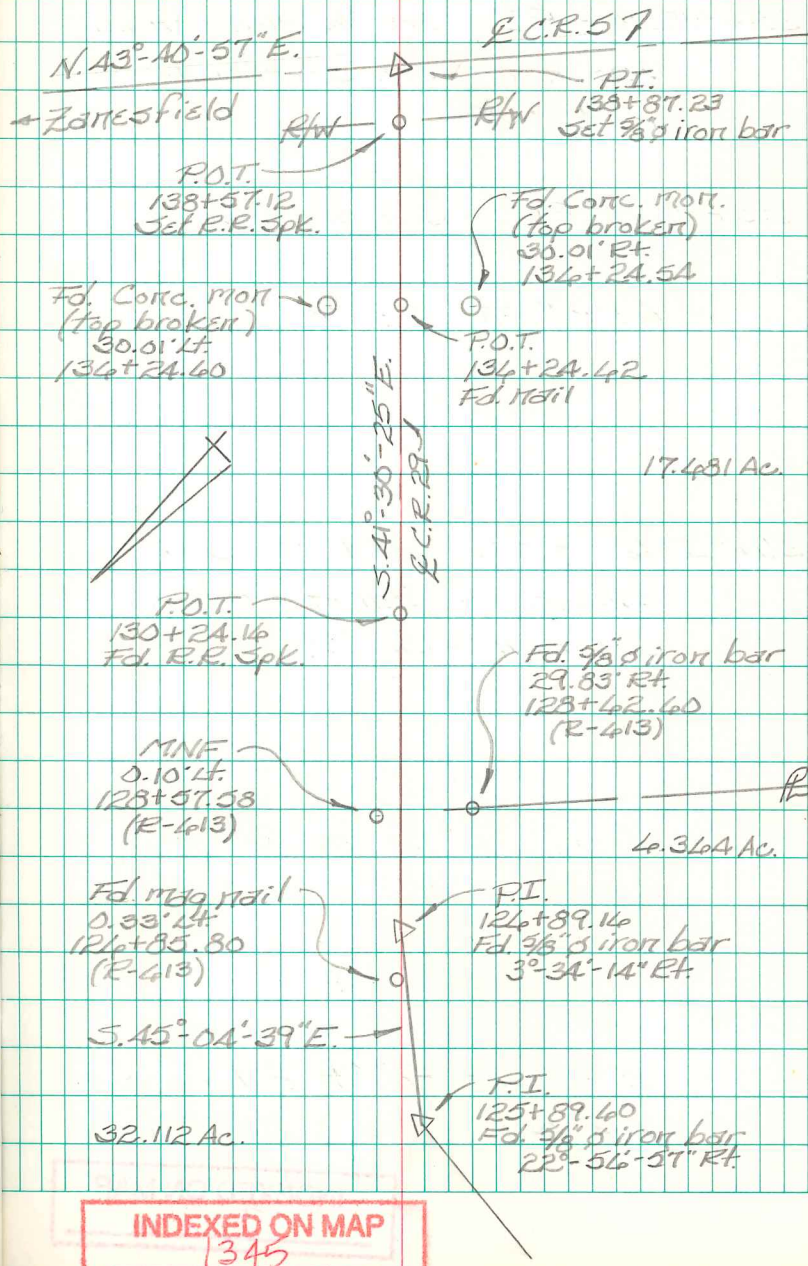
126+89.16 - P.I. - Fd. bent  $\frac{1}{2}$ " dia. iron  
here in 1989 - replaced w/  $\frac{5}{8}$ " dia.  
capped iron bar at that time &  
installed a monument box - shown  
as Sta. 127+00 in F.Bk. # 402, pg. 34.  
3°-34'-14" Rt.

125+89.40 - P.I. - Fd.  $\frac{5}{8}$ " dia. capped  
iron bar (circa 1989) - shown  
as Sta. 126+00 in F.Bk. # 402, pg. 33  
22°-56'-57" Rt.

B. Simmons  
G. Dappert  
C. Dill

Dec. 2014

64



INDEXED ON MAP

1345

FB 713

Intersection C.R. 5 w/ C.R. 29

Monroe Twp.  
Logan Co., Ohio

288+98.74 - P.I. - Fd.  $\frac{5}{8}$ " dia. iron bar -  
shown as Sta. 289+00 in  
F.B.K. # 497, pg. 74.

285+99.11 - P.I. - Fd.  $\frac{1}{2}$ " dia. iron bar -  
shown as Sta. 284+00 in  
F.B.K. # 497, pg. 74.

276+83.50 - P.I. - Set  $\frac{5}{8}$ " dia.  
capped iron bar - Intersection  
C.R. 5 w/ C.R. 29  
No Angle

275+48 - P.I. - Fd. 1" square  
iron bar - Ref: F.B.K. # 497,  
pg. 73.

INDEXED ON MAP  
1345

B. Simmons  
G. Dappert  
C. Dill

Dec. 2014

65

