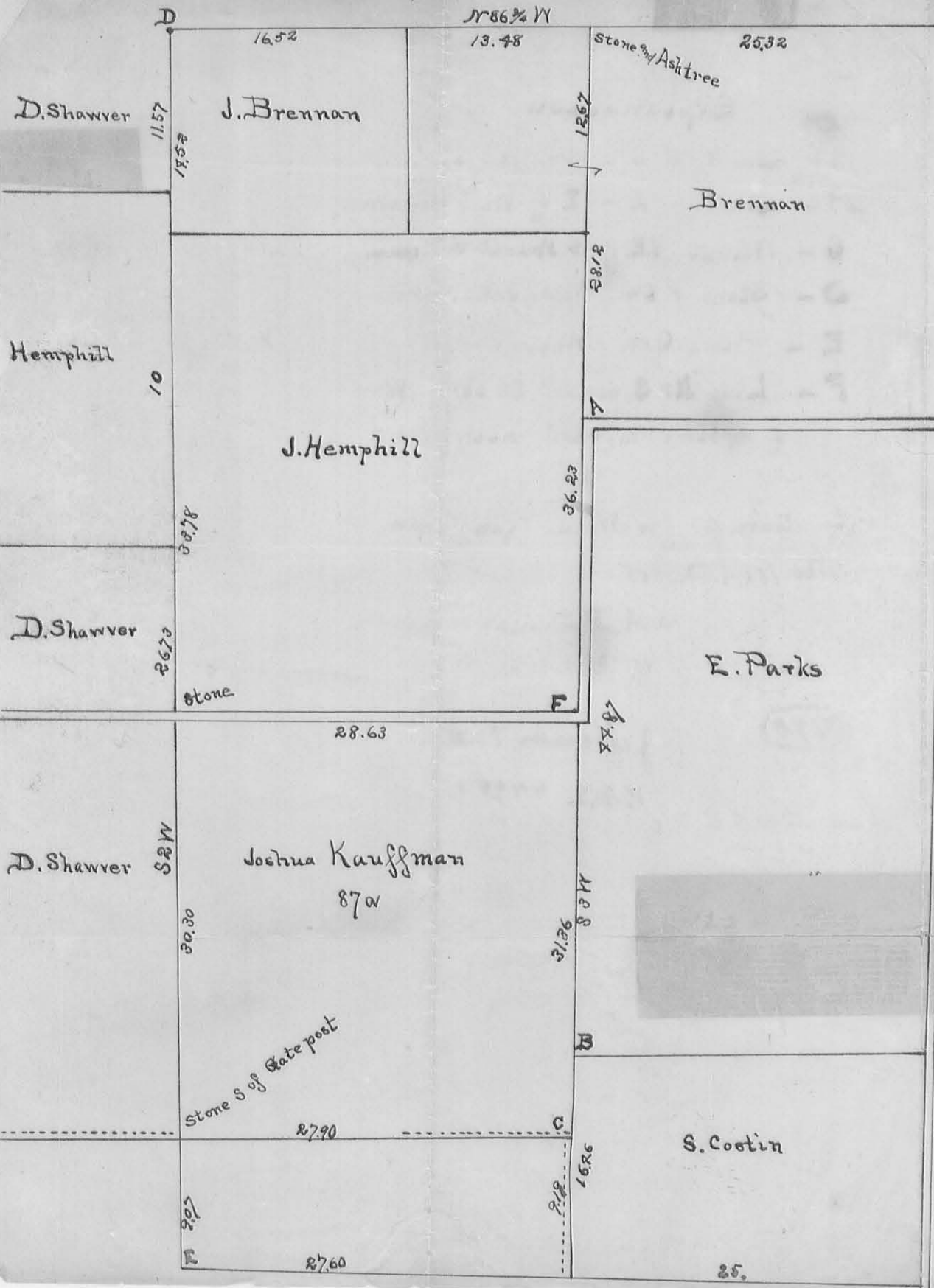


Original Survey No. 4498



Explanation

- A - Line N x S 6ft 3in W. of Oak tree
- B - Line ... 2 .. E of White Oak tree
- C - Walnut N.E. 17 & Walnut S.E. 66 1/2
- D - Stone & two Black oaks. Orig.
- E - Black Oak & White Oak Stump
- F - Line N x S. passes 32 links West of a Stone marked with a cross

Surveyed for Joshua Kauffman
Nov. 11. A.D. 1885

So A. Buchanan Co Surv.
pr. M.H. McCormick Dep.

(870) 1P

Jefferson Turb
V.M.S. 4498

INDEXED ON MAP
See Book C
Page 152
(# 277)