

Survey for

Township

Page

(865) 10-1

INDEXED ON MAP

J. D. McCulloch }  
L. E. Cordrey } Surv.

Surv. 3220 - Jefferson of

May 22 - 1911

Survey for

Township

Page

1

Frank DeWitt Exr

Vol.

90

Page

493

Sec.

T.

R.

Ester J McCulloch

Date

Surv.

3220 x 6450

Thence

Begin ash @ sugar, &lt; Joseph Crown

S 88<sup>3</sup>/<sub>4</sub> E, 94<sup>1</sup>/<sub>10</sub> p to stone & forked Blk Walnut < W.B. SandsS 2 W, 120<sup>6</sup>/<sub>10</sub> p to stoneS 88<sup>3</sup>/<sub>4</sub> E 135<sup>8</sup>/<sub>10</sub> p to stone in E. line of 6450, & < W.B. SandsS 16<sup>3</sup>/<sub>4</sub> W, 57<sup>9</sup>/<sub>10</sub> p to stone on W. side of branch, NE < W.B. SandsN 88<sup>3</sup>/<sub>4</sub> W, 217<sup>8</sup>/<sub>10</sub> p to ash, poplar @ & beeches.

&lt; Fr. Conley

N 2 E 170 p to beginning,  
alsoRoad, 2 poles wide - Begin @ B & Z road near  
Jus Meachems, bears S 19<sup>1</sup>/<sub>2</sub> W, 10 p to stone.

S 6 W, 30 p to stone in S. line Mechem

also

another road - Begin @ road at the S. end &amp; in N line

Acres, (more or less)

INDEXED ON MAP

865 182

①

Survey for \_\_\_\_\_

Township \_\_\_\_\_

Page

2

\_\_\_\_\_ to \_\_\_\_\_

Vol. \_\_\_\_\_ Page \_\_\_\_\_

Sec. \_\_\_\_\_ T. \_\_\_\_\_ R. \_\_\_\_\_

Date \_\_\_\_\_

Surv. \_\_\_\_\_

Thence

of tract of 35 1/4 a

S 2 W, 1 p to stone - N 88 W, 9 p to stone

S 2 W, 56 1/2 p. to S. line of 35 1/4 a tract  
to be 2 rods wide

INDEXED ON MAP

865 D-3

\_\_\_\_\_ Acres, (more or less)

(2)

Survey for

Township

Page

Wilson S. Ochetree

to

Jno A D McCulloch

Vol. 158 Page 241

Sec. T. R.

Date 11-23-1909

Surv.

3220

Thence

Begin stone, &lt; to J. F. Miller.

N 4 E,  $1\frac{6}{19}$  p. to  $\odot$  B & Z pikesoutheasterly with  $\odot$  pike  $68\frac{30}{100}$  p to stone, NW  $\angle$  Jno Brennum

S 8 W, 56.20 p. with Brennum W. line, to stake

N  $85\frac{1}{2}$  W, 19.96 p. to stake < Jno F. MillerN  $2\frac{3}{4}$  E, 36<sup>70</sup> p to stake in  $\odot$  of old roadN  $69\frac{3}{4}$  W, 41  $\frac{44}{100}$  p. to begin -  $11\frac{3}{4}$  c

Except rt-of-way along east side of above premises

INDEXED ON MAP

265 1D-4

Acres, (more or less)

3

Survey for \_\_\_\_\_

Township \_\_\_\_\_

Page \_\_\_\_\_

Israel Kinney

to

W. Sherman Kinney

Vol. 99

Page 472

Sec. \_\_\_\_\_

T. \_\_\_\_\_

R. \_\_\_\_\_

Date 10-15-1903

Surv. 3220

Thence

Begin stone, in W. line of survey SW  $\angle$  Costin at x roads  
 with road to Zanesfield S75E, 19 lbs, S62E, 72.2 p  
 S83E, 36 p. S88E 24 p. to stone, S73E, 40.6  
 poles to stone

with W. line Jno Mechem S2W 39 p, crossing branch  
 at 11 poles to post, ~~now~~  $\angle$  to Mechem

westerly 41 p to 2 Lynns, and a sugar, NW  $\angle$  Crouse

N 89W, 141 p to post in W. line survey in county road

N 11/2 E, 87 <sup>50</sup>/<sub>100</sub> p to beginning = 63 acres

INDEXED ON MAP

865 1D-5

Acres, (more or less)

4

Survey for \_\_\_\_\_

Township \_\_\_\_\_

Page \_\_\_\_\_

Wm B Cordrey

to

Lafayette E. Cordrey

Vol. 109 Page 271

Sec. \_\_\_\_\_ T. \_\_\_\_\_ R. \_\_\_\_\_

Date 5-1-1909

Surv. 322d

Thence

Begin stone & broken creek, @ B & Z pike, NE  $\angle$  of Baldwin's landS  $7\frac{1}{2}$  W,  $56\frac{2}{10}$  p, crossing branch at 24 p. to stone & broken creek, SE  $\angle$  BaldwinS  $86\frac{1}{4}$  W,  $9\frac{6}{10}$  p. to stone & broken creek,  $\angle$  Joe SuttonS  $2\frac{1}{4}$  W,  $57\frac{3}{10}$  p with Sutton E. line to stone & broken creekS  $87$  E,  $44\frac{8}{10}$  p to stone, NE  $\angle$  A. DeWittN  $2\frac{1}{2}$  E,  $62\frac{2}{10}$  to stone & broke creek, wd: - B. Wal. S  $52\frac{1}{2}$  W,  $4\frac{1}{10}$  ltsS  $86\frac{1}{2}$  E,  $17\frac{86}{100}$  p. with Joe Gregory land to stoneN  $5\frac{1}{2}$  E,  $46\frac{8}{10}$  p crossing branch to stone & broken creek, @ pikeN  $83\frac{1}{2}$  W, 50 p. with pike to begin = 32.55areserving to A. DeWitt the rt-of-way to said pike, (and) as  
sold him by J. Baldwin & wife along W. side of above tract

INDEXED ON MAP

865 1D-6

Acres, (more or less)

5

Survey for \_\_\_\_\_

Township \_\_\_\_\_

Page \_\_\_\_\_

J. M. Hamilton et al

to

Israel Kinney

Vol. 83 Page 6

Sec. \_\_\_\_\_ T. \_\_\_\_\_ R. \_\_\_\_\_

Date 1894

Surv. 3220

Thence

Begin stone, W. line Orig Surv. at X roads

with road to Zanesfeld, S 75 E, 19 lks. — S 62 E, 72.2 p

S 83 E, 36 p. — S 88 E, 24 p. to stone

S 73 E 40.6 p to stone

with W. line Jno Mechem S 2 W, 39 p crossing branch at  $11\frac{2}{10}$  pS 88 E 10 p — S 2  $\frac{1}{4}$  W, 59  $\frac{2}{10}$  p to fence postN 88 W 50  $\frac{6}{10}$  p to post in E. line P. Crouse, with:

14" lynn N 49 W, 5 lks

N  $\frac{1}{2}$  E 63  $\frac{2}{10}$  p to 2 lynn, ash & sugar, NE  $\frac{1}{4}$  corner

N 89 W 141 p to post in W. line orig Surv.

N  $1\frac{1}{2}$  E 87  $\frac{6}{10}$  p to begin82 46 i

INDEXED ON MAP

865 1D-7

Acres, (more or less)

6

Survey for \_\_\_\_\_

Township \_\_\_\_\_

Robert Boyd

Vol. 70 Page 83

Sec. \_\_\_\_\_ T. \_\_\_\_\_ R. \_\_\_\_\_

Lulu Boyd

Date \_\_\_\_\_

Surv. 3220

Thence

Begin stake at edge of small drain < to Mrs Bowers land  
 & in line of Sarah Harwood's land

— N 2 1/2 E 42 p to stake

— S 26 E 47 1/2 p to stake in line said Bowers

— N 87 1/2 W 24 p to begin

3 a 24 p

INDEXED ON MAP

265 1D-0

Acres, (more or less)



Survey for See opp. page for plot

Township

Page

See Rec'd "C" p. 32x33

Vol. \_\_\_\_\_ Page \_\_\_\_\_

Sec. \_\_\_\_\_ T. \_\_\_\_\_ R. \_\_\_\_\_

Date \_\_\_\_\_

Surv. \_\_\_\_\_

Thence

A = Blue Rock stone, with 2 brick bats at SE  $\angle$  3220  $\times$  at  
One corner of Surv. 6447. Wit: roots of large white oak, S 87  $\frac{1}{2}$  E, 5 lbs

Large sugar-slimp, N 87  $\frac{1}{2}$  W, 5 lbs

B = Blue Rock Stone; Wit: - 12" beech, N 67 E, 13 lbs; Beech 10", N 7  $\frac{1}{2}$  E, 14 lbs,  
8" beech S 12 W, 14 lbs

C = Rock stone on top orig stone.

D. = Small stone & brick, 6 lbs S. of large rock stone & wit: 54" Ironwood N 10 E, 28 lbs  
15" Ash N 45 W, 40 lbs

E = Long Course Sand Stone, NW  $\angle$  6447, (and) SW  $\angle$  6450, Wit: - 12" Sugar, S 46 E, 20 lbs

10" Sugar N 86  $\frac{3}{4}$  E, 21  $\frac{1}{2}$  lbs

4" Ironwood, S 5  $\frac{1}{4}$  W, 10 lbs

F = Rock Stone,  $\angle$  Surv. 6447, 6450, 3137  $\times$  3138, Wit 20" beech S W 54 lbs

11" beech S 25  $\frac{1}{2}$  W, 93 lbs

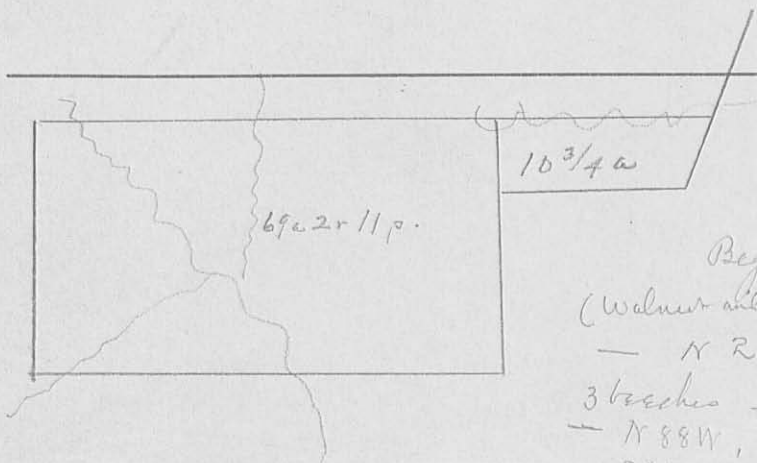
INDEXED ON MAP

865 1D-9

Acres, (more or less)

9

Surv. Record "A" p. 346

Surv. for Isaac Rea 8-30-1843  
1st lot in Surv 3220Begin SE < Surv at Sugar, Walnut & Lynn  
(Walnut and Lynn down)

- N 2 E, 77 $\frac{3}{10}$ p crossing branch to stake near 3 beeches marked as corner trees.
- N 88 W, 144p crossing 3 branches to large ash & 2 poplars
- S 2 W, 77 $\frac{3}{10}$ p to 2 sugars
- S 88 E, 144p crossing 2 branches to beginning  
69a 2 rods 11 poles

2d tract in Surv. 6450

Begin, stone SE &lt; Survey.

- WNW 63 $\frac{4}{10}$ p to 3 sugar trees in E. line Surv. 3220.
- N 2 E, 25 $\frac{9}{10}$ p crossing branch to stake near 3 beeches marked as < trees
- S 88 E 70p crossing branch several times to stake & back in  
W. line of Surv. 3137
- with new line S 16 $\frac{1}{2}$  W, 27p to begin, = 10 $\frac{3}{4}$  acres

John Wickham

INDEXED ON MAP  
865 1D-10

Survey for \_\_\_\_\_

Township \_\_\_\_\_

Page \_\_\_\_\_

E of Howenstein

to

R. E. &amp; M. V. Cordery

Vol. 94 Page 38139

(Copied from deed)

Date \_\_\_\_\_

Sec. \_\_\_\_\_ T. \_\_\_\_\_ R. \_\_\_\_\_

Surv. 3225 and 6450

Thence

Begin stake, with tree, S 62 E, 33 lks.

S 43 3/4 E, 111 p to stone and link.

S 16 3/4 W, with W. line Surv. 6450, 81.1 p to stone

88 3/4 W, 135 3/4 [indistinct] poles to stone

N 2 E, 128 5 p. to stone &amp; blk walnut

88 3/4 E, 17 1/2 p to stone, &lt; Jno. Macham

N 5 1/2 E, about 48 p to stone, S. side Bellef &amp; J road

Easterly on S. side road to W line Surv 6450 &amp; E line 3225

South with <sup>said</sup> line to stone, formerly < to John Collins & <  
to lands formerly D. G. Hoge

S 88 E, 23 1/2 p to stone &lt; W B Sand

S 2 E 8 p to begin

127 a more or less

INDEXED ON MAP

865 1D-11

Acres, (more or less)

12

Survey for \_\_\_\_\_

\_\_\_\_\_ Township

Page

Courad Marshall

Vol. W Page 149

Sec. \_\_\_\_\_ T. \_\_\_\_\_ R. \_\_\_\_\_

to  
John Collins

Date 1851

Surv. 6450

Thence

Begin stone, W. line of Surv. 6450, SW $\frac{1}{4}$  Jacob Gross  
east with Gross S. line 13.7 p to stone

— south 7 p. to stone in Rea's N. line

— west with Rea's line 13.7 p to stone in W. line Surv.

— North 7 p to begin

95 sq. poles

INDEXED ON MAP

865 1D-12

INDEXED ON MAP

x1 — with said line s2w, 77 1/2 p to stone <sup>and nonwood</sup>  
— east 54 p to stone in B 2 J road, < to Smith lot

INDEXED ON MAP  
865 1D-13

Survey for \_\_\_\_\_

Township \_\_\_\_\_

Page \_\_\_\_\_

Elba Fawcett

Vol. 94Page 562

Sec. \_\_\_\_\_

T. \_\_\_\_\_

R. \_\_\_\_\_

to  
Frank Aulegast

Date \_\_\_\_\_

Surv. 6450

Thence

Begin Sugar & Hick, Hick down in E. line of 6450  
& W. line Surv. 3137.— N 17 E, with said line, 173 p. crossing B & J road  
to stone, SE < Jas. Knight— with his south line, N 89 W, 152 p. to stone in  
E. line of surv. 3220, the said Knight's SW <— with said line S 2 W, 77 1/2 p to stone in B & J road,  
(X) (one) < to Smith's lot. (See opp page)

— S 17 W 32 1/2 p to stone in W. B. Sands line

— S 43 1/4 W, 87 p to begin.

↑ ↑

{ 81' }

95 05 a

think should be S 43 1/4 E.

INDEXED ON MAP

865 10-14

check died ok:

Except 2a conveyed by O. Fawcett to Israel Kinney

Survey for \_\_\_\_\_

Township \_\_\_\_\_

Page \_\_\_\_\_

James Kenton

Vol. 35 Page 399

Sec. \_\_\_\_\_ T. \_\_\_\_\_ R. \_\_\_\_\_

to  
Solomon G. Hoge

Date Jan 1860

Surv. \_\_\_\_\_

Thence

Same description as in deed of  
Elba Fawcett to Frank Arbogast  
Vol 94 - 562

INDEXED ON MAP  
865 1D-15

Survey for \_\_\_\_\_

Township \_\_\_\_\_

Page \_\_\_\_\_

Geo W Henry

to

J M Small

Vol. 100

Page 141

Sec. \_\_\_\_\_

T. \_\_\_\_\_

R. \_\_\_\_\_

Date \_\_\_\_\_

Surv. 3137

Thence

Begin stone NW  $\angle$  SB  $\angle$  of Smith's in W line of 3137  
N  $17^{\circ} 5'$  E, with saw line, 127  $\frac{1}{2}$  p to stone in B23 road  
S  $72\frac{1}{4}$  E, 151  $\frac{1}{2}$  p to stone in said road  
S  $16\frac{1}{2}$  W, 120 p 23 lks to stone in aforesaid Smith's N. line,  
being N  $74\frac{1}{4}$  W, 45 lks from Smith's corner  
N  $74\frac{1}{4}$  W, 153 p. to begin,  
Ex 6 a out of SE  $\angle$   
110 a ex 2 a to Federal Cleveland

INDEXED ON MAP

865 1D-16



Survey for \_\_\_\_\_

Township \_\_\_\_\_

Page \_\_\_\_\_

Joseph Shoats  
to  
E. T. Hawcett

Vol. 71 Page 122

Sec. \_\_\_\_\_ T. \_\_\_\_\_ R. \_\_\_\_\_

Date \_\_\_\_\_

Surv. 3137

Thence

Begin stake, w. line ssw. 3137, with 24" knob N54 $\frac{3}{4}$ E, 5  
White Walnut, 513 E, 37 lks.

- N 19 E, 63<sup>29</sup> p. with ssw. line to stake, ssw. to Fred Henry
- with his line, S 73 $\frac{1}{2}$  E, 167 p to stake - O L @ W L. pike
- etc etc

last course ↓

- N 72 $\frac{1}{2}$  W, 204<sup>70</sup> p to begin = 85<sup>40</sup> a exclusive  
of 6<sup>12</sup> a owned by Wm B Knight

INDEXED ON MAP

865 1D-17

Survey for

Township

Page

Lucetta Fawcett

Vol.

65

Page

438

Sec.

T.

R.

Israel to Kinney

Date

Surv.

6450

Thence

Begin, stake in W. line of said survey, SE  $\angle$  to the old  
 Job S Knight farm. W.  $\angle$  - 9" pike, S  $29\frac{1}{4}$  E, 45 lks, Black oak  
 12", N  $77\frac{3}{4}$  E, 69.7 lks, also stone, SE  $\angle$  Israel Kinney 40  
 tract N 4 E, 99 lks.

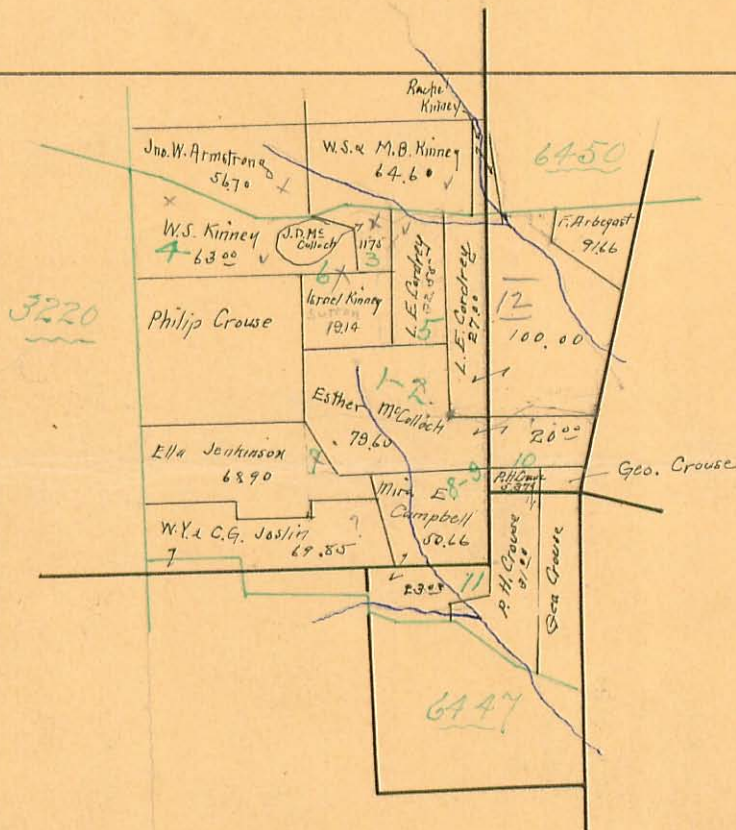
- with W. line of surv. S 4 W, 77 p. to N. line Ezra Shotts  
 in S. side B 2 3 pike.

- with S. side of pike <sup>and</sup> N. line Shotts, S  $87\frac{1}{2}$  E, 9 p to stake  
 wit:  $\odot$  arch culv. [i.e. middle bet. parapet walls <sup>and</sup> keystones] N  $72\frac{1}{2}$  E  
 22 lks, 7" Syc cor. marked, N  $19\frac{1}{2}$  W, 42 lks.

- N  $2\frac{3}{4}$  W, 77.3 p. to begin 2.16 a

INDEXED ON MAP

865 1D-10



See "D" pg 24

3220

6450

6447

INDEXED ON MAP  
865 IP-1

INDEXED ON MAP  
865 IP-2

8

Oct - 1859

H. C. Moore

Surv. Record C. p. 32

Surv. 6450

Surv. 3137

Survey No 3220

F. Conley

Wm Moons

N 88 3/4 W

Block line

N 13 1/4 E, 200 ch

13 00 ch

East 15.55 ch F.

Surv. 3138

Surv. 6449

584

Beginning

No 6447

Sam'l May

8 1/2 W

S 70 3/4 E  
270

584

N 88 1/4 E  
970

Lewis Crouse  
61 81 a

N 3 1/2 W  
710

3930 ch with block line  
S 1 W

N 49 W  
2643 ch

See opposite page for notes



July 26 & 27 - 1900  
C. Miller -

35 ch N 88 W

Iron bolt - inside of cor. -

30.51

N 2 E

31.32

N 2 E

Iron pipe w/it. 26" oak, N-W 42 lbs  
10" hick, N 30 W, 53 lbs

N 87° 44' W 35.03

10° ch

Iron pin: 4" hick N 60 W, 30 lbs  
18" oak, 53 3/4 lbs

Iron pin: 20" brace N 80 W, 37 lbs  
8" Walnut N 20 W, 68 lbs

Stone, 12" brace N 67 E, 13 lbs  
8" hick S 12 W, 14 lbs

Found 20" Syc. which Mr. Mayo  
states is orig corner. w/it:  
10" oak, N 70 W, 12 1/2 lbs

N 89 W

26.20

36.34 S 88 E. 19.98

19.20

4.87

3.26

S 89 E - 11.605

5.30

S 114 E  
20.45

Iron pin  
20" Walnut 370 W, 37 lbs  
8" W. Walnut, S 6 E, 71 lbs

S 2 E. 26.6 → S 88 1/2 E 15.11

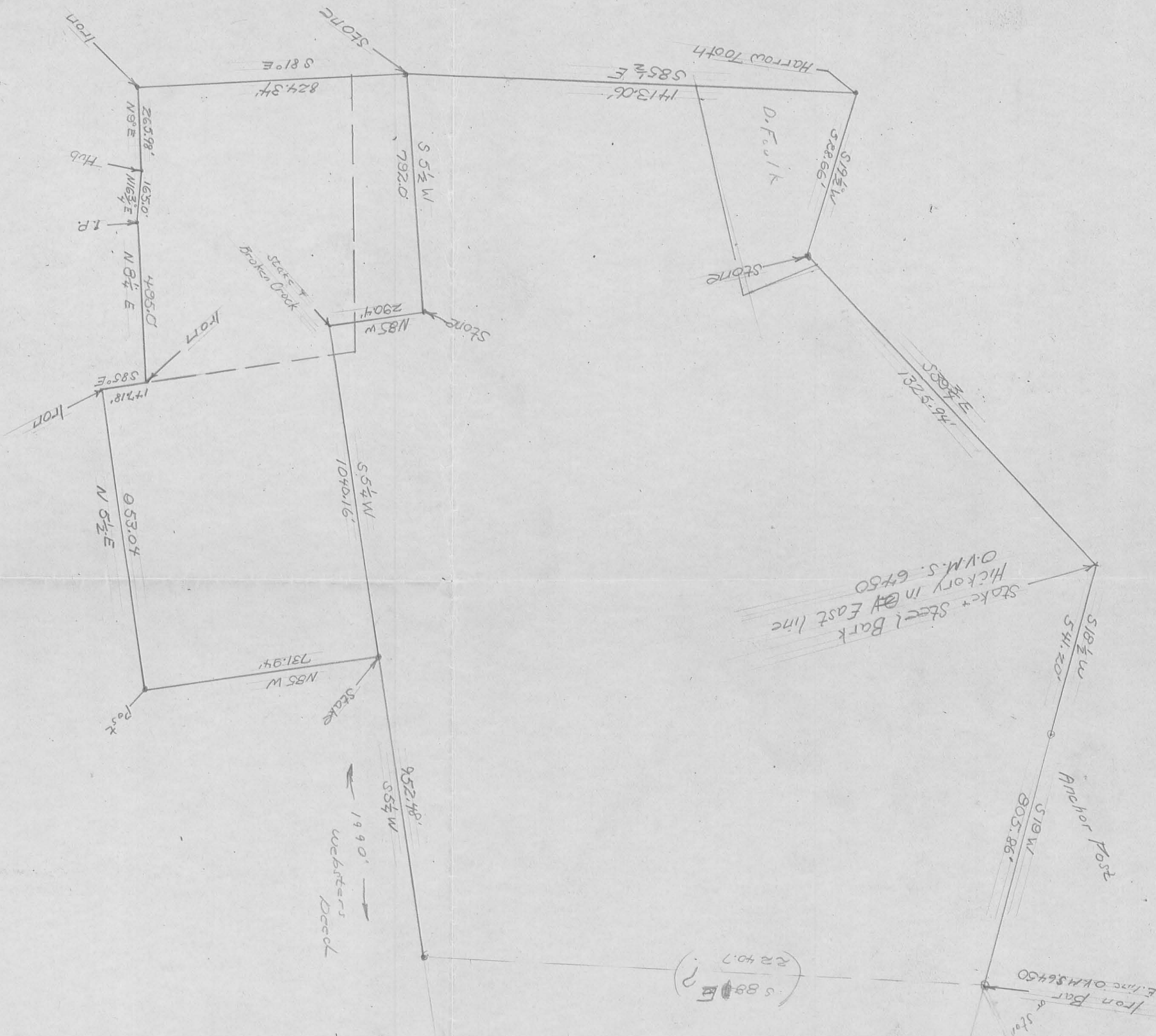
INDEXED ON MAP

265 1P-3

11



SEE BOOK D, pg. 24



CHARLES GRAHAM

INDEXED ON MAP  
865 2P

3389  
166  
2003#  
20034  
2903.74