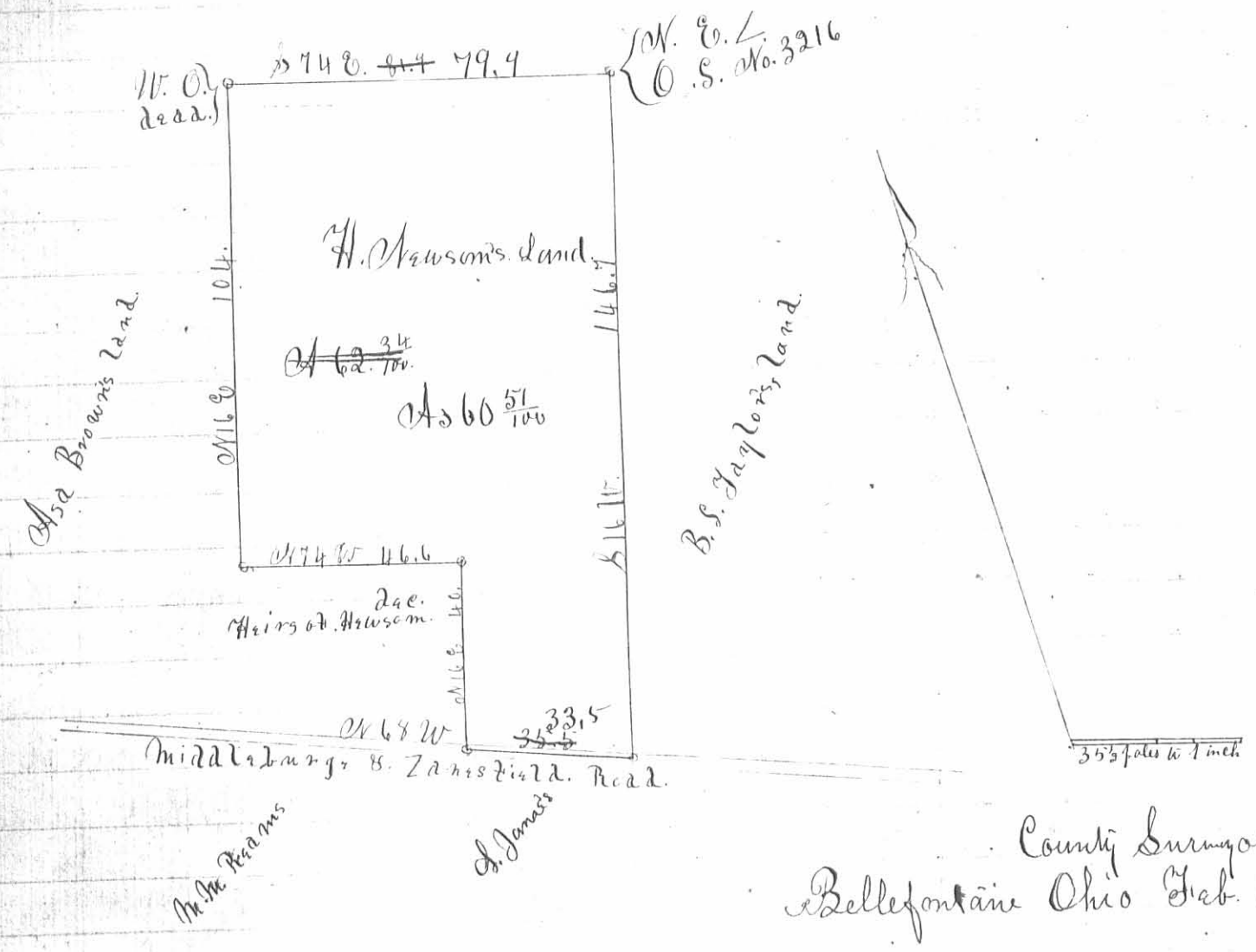


Survey No. 871.

321 IP



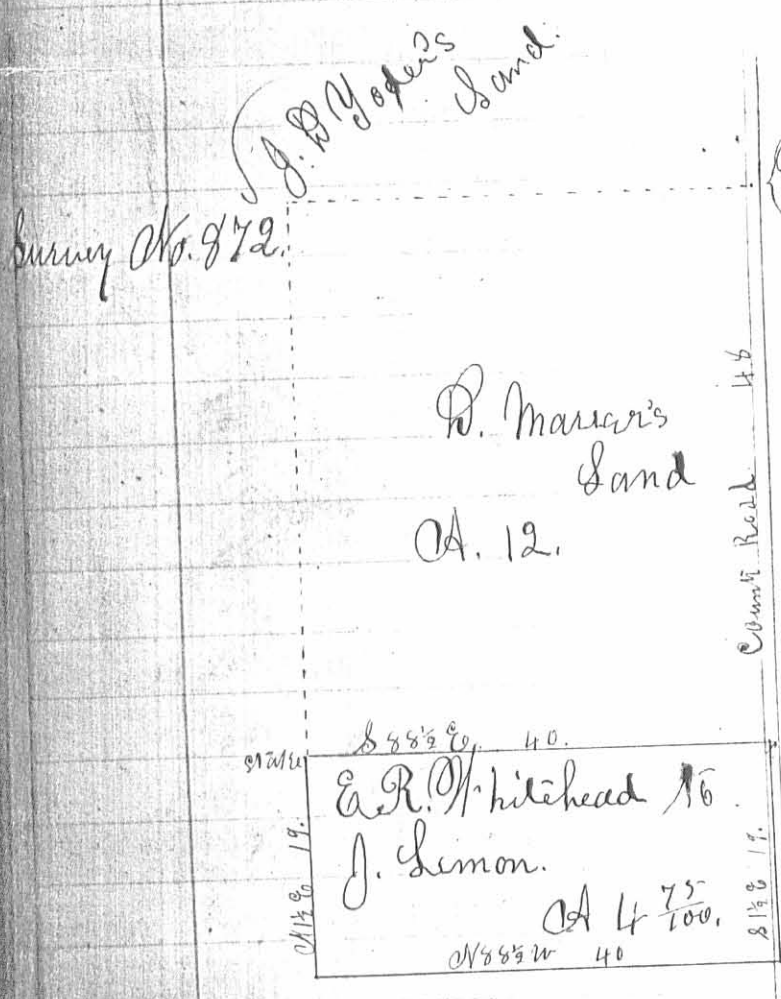
County Surveyor's Office
Bellefontaine Ohio Feb. 12th 1866.

Jefferson Prop.

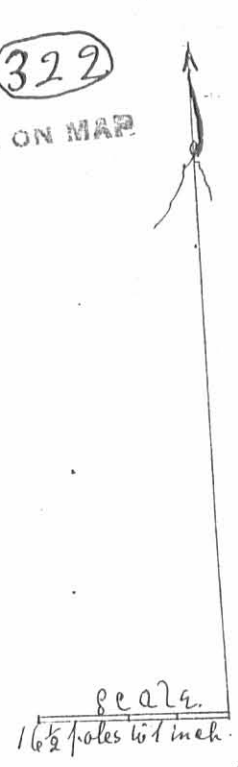
Surveyed for Christopher Williams, Guardian of
Henry Newson, a lunatic, as shown by the above plat; part of Original Virginia
Military Survey No. 3216. Situate in Logan County Ohio.

Survey made Jan. 26th 1866

J. D. McLaughlin Co. S.



INDEXED ON MAP



County Surveyor's Office
Bellefontaine Ohio

Feb. 12th 1866.

Surveyed for E. R. Whitehead as shown by the
above plat; a part of the South West Quarter of Section No 8. T 3 R 14
M. P. 2. Situate in Logan County Ohio

Survey made Jan. 30th 1866.

J. D. McLaughlin Co. S. L. C. O.