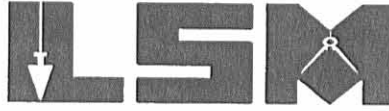


DEED 8-19-04 SML/RL

Lee Surveying and Mapping Co., Inc.

Land Surveys • Topography • Subdivisions • Construction Layout

117 N. Madriver St.
Bellefontaine OH 43311



Phone: (937) 593-7335
Fax: (937) 593-7444

DETRICK 4.600 ACRES

Lying in Section 3, Town 3, Range 14, Harrison Township, Logan County, Ohio.

Being out of the Barbara A. Detrick 105 acre tract as deeded and described in Volume 401, Page 897, Tract 1 of the Logan County Records of Deeds and being more particularly described as follows:

Beginning at a concrete monument found in a monument box at the northeast corner of Section 3 on the east line of Harrison Township and on the intersection of center-lines of Township Road 216 and County Highway 11.

THENCE, with the north line of the northeast quarter of Section 3 and the center-line of County Highway 11 (60 feet wide), N 85°-50'-00"W, a distance of 530.37 feet to a MAG nail set at the TRUE POINT OF BEGINNING.

THENCE, S 7°-20'-58"W, a distance of 489.04 feet to a 5/8 inch iron rod set, passing a 5/8 inch iron rod set at 30.05 feet.

THENCE, with the west edge of a waterway, S 44°-34'-04"W, a distance of 42.76 feet to a 5/8 inch iron rod set.

THENCE, N 85°-50'-00"W, a distance of 345.13 feet to a 5/8 inch iron rod set.

THENCE, N 4°-10'-00"E, a distance of 520.85 feet to a mag nail set, passing a 5/8 inch iron rod set at 490.85 feet.

THENCE, with the north line of the northeast quarter of Section 3 and the center-line of County Highway 11, S 85°-50'-00"E, a distance of 400.00 feet to the point of beginning.

Containing 4.600 acres, of which 0.275 acre is within the highway right-of-way.

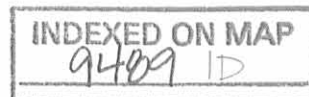
The basis for bearings is the north line of the northeast quarter of Section 3, being S 85°-50'-00"E, and all other bearings are from angles and distances measured in a field survey by Lee Surveying and Mapping Co., Inc. on August 17, 2004.



ORIGINAL STAMP IN GREEN

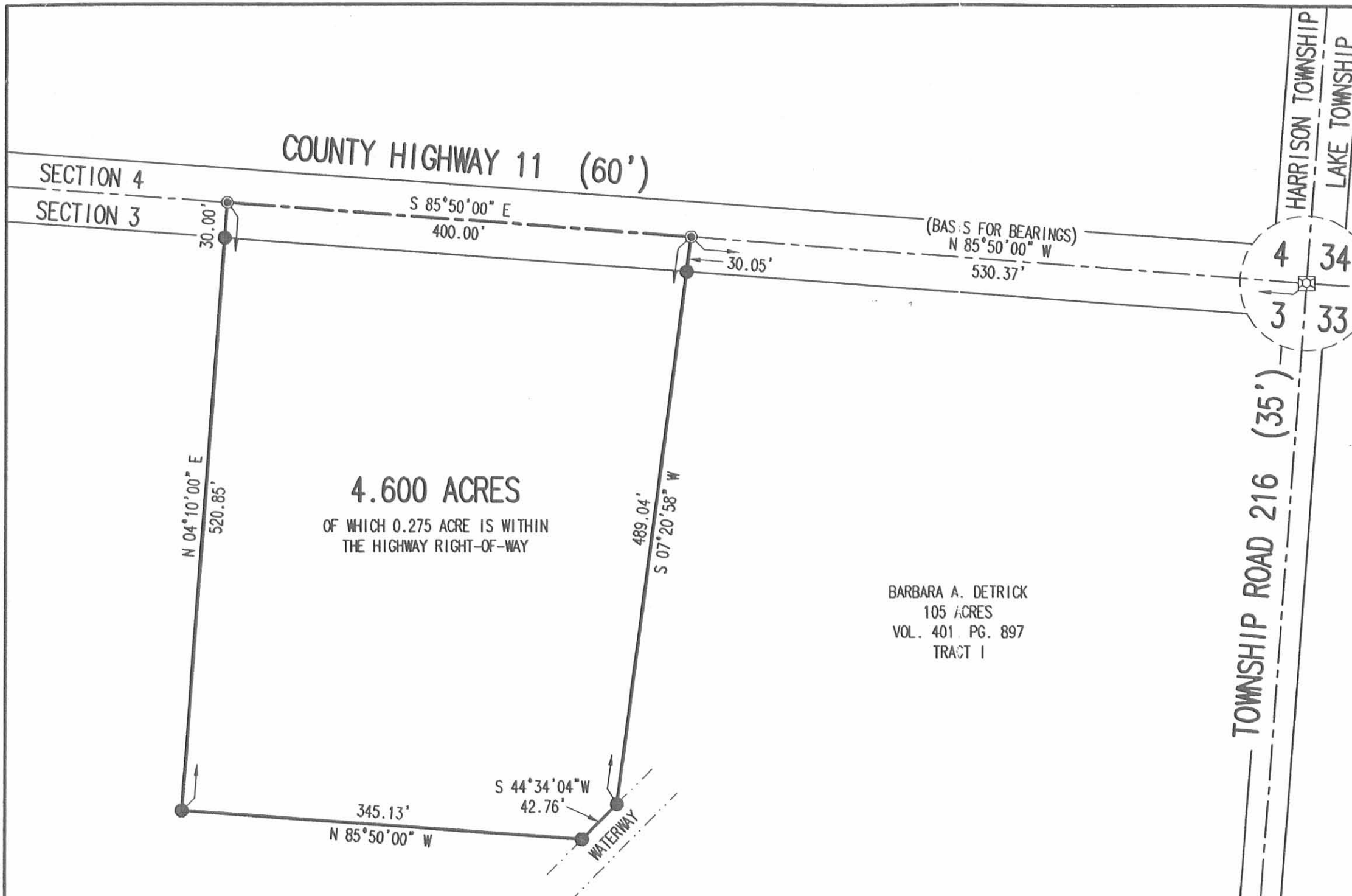
Description prepared by:

Jeffrey I. Lee
Jeffrey I. Lee
Professional Surveyor 6359
August 17, 2004



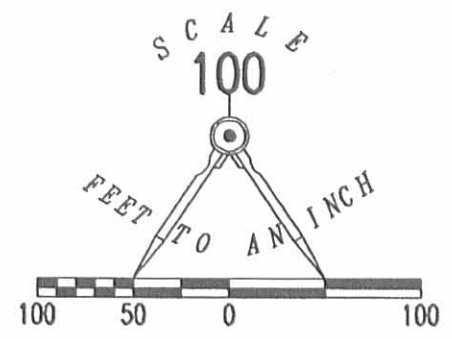
L-3880

REC'D 8-19-04 SUM au



4.600 ACRES
 OF WHICH 0.275 ACRE IS WITHIN
 THE HIGHWAY RIGHT-OF-WAY

BARBARA A. DETRICK
 105 ACRES
 VOL. 401 PG. 897
 TRACT 1



- LEGEND:
- CONCRETE MONUMENT FOUND IN MONUMENT BOX
 - MAG NAIL SET
 - 5/8 INCH IRON ROD SET

**SURVEY OF 4.600 ACRES OUT OF THE
 BARBARA A. DETRICK
 105 ACRE TRACT
 VOLUME 401, PAGE 897, TRACT 1
 SECTION 3, TOWN 3, RANGE 14
 HARRISON TOWNSHIP
 LOGAN COUNTY, OHIO**

SURVEYED BY:

Jeffrey I. Lee
 JEFFREY I. LEE
 PROFESSIONAL SURVEYOR 6359
 AUGUST 17, 2004



COPYRIGHT 2004 BY:
LEE SURVEYING & MAPPING CO., INC.
 117 North Madriver Street
 BELLEFONTAINE, OHIO 43311
 (937) 593-7335

ORIGINAL STAMP IN GREEN KSR D413 3880074 L-3880-3

2 WORKING DAYS
BEFORE YOU DIG
 CALL TOLL FREE **800-362-2764**
 OHIO UTILITIES PROTECTION SERVICE.

INDEXED ON MAP
 9409 IP