

FB 711

C.R. 130
Sta. 125+00 to C.R. 37
Harrison Twp., Logan Co., Ohio

3658.04'

125+00 - P.I. - R.R. Spike
set on the split of the two
R/W monuments found -
start of this survey -
Ref: R/W Plan L-27

INDEXED ON MAP
9402

C. Nichols
C. Dill
B. Simmons

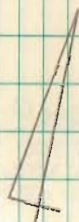
March - May 01

54

R/W Mon. Fd. \circ
30.30' Lt.
E Sta. 144+99.46
OK

R/W Mon. Fd. \circ
29.80' Lt.
E Sta. 144+99.25
OK

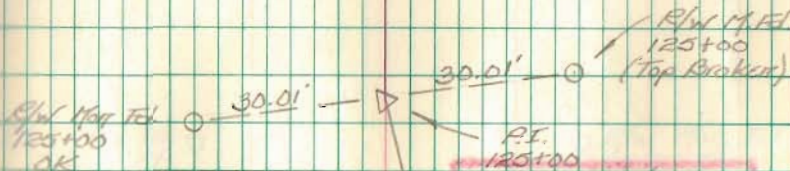
R/W Mon. Fd. \circ
30.18' Lt.
E Sta. 139+99.10
(Top Broken)



R/W Mon. Fd. \circ
30.02' Lt.
E Sta. 134+99.89
OK

N 10° 08' W.
E C.R. 130

R/W Mon. Fd. \circ
29.94' Lt.
E Sta. 129+99.89
OK



P.I.
120+00
RR Spike set

FB 711

C.P. 130
Sta. 125+00 to C.P. 37
Harrison Twp, Logan Co., Ohio

161+58.04 - P.I. - R.F. Spike
set

$2^{\circ}49'03.4''$ Rt.

Curve Data

$\Delta = 2^{\circ}49'03.4''$ Rt.

$P_a = 1^{\circ}$

$R = 5729.58'$

$T = 140.91'$

$L = 281.76'$

$L.C. = 281.73'$

P.C. = Sta. 140+17.13

P.I. = Sta. 161+58.04

P.T. = Sta. 142+98.89

3658.04'

INDEXED ON MAP
9482

C. Nichols
C. Dill
B. Simmons

March - May 01

55

P.I. \rightarrow
161+58.04
R.F. Spike set
 $2^{\circ}49'03.4''$ Rt.

C.P. 577

○ R/W Mark. Fd.
29.79' Rt.
E Sta. 160+46.11
(Top Broken)

R/W Mark. Fd. ○
30.12' Lt.
E Sta. 154+99.28
OK

○ R/W Mark. Fd.
29.96' Rt.
E Sta. 154+99.13
(Top Broken)

R/W Mark. Fd. ○
30.21' Lt.
E Sta. 149+99.38
OK

○ R/W Mark. Fd.
29.71' Rt.
E Sta. 149+99.38
OK

E C.P. 130 T
N. 10° 08' W

FB 711

C.R. 130
Sta. 125+00 to C.R. 37
McArthur Twp., Logan Co., Ohio

177+43.31 - P.I. - R.R. Spike
set - Intersection of C.R. 130
w/ E C.R. 39
No Angle

1605.33'

141+58.04 - P.I. - R.R. Spike
set.

2° 49' - 03.4" Rt.

INDEXED ON MAP
9402

C. Nichols
C. Dill
B. Simmons

March - May 01

56

P.I. →
177+43.31
R.R. Spike set
No Angle

○ R/W Mark. Fed.
29.65' Rt.
E Sta. 175+99.16
OK

○ R/W Mark. Fed.
30.45' Lt.
E Sta. 147+99.35
(Top Broken)

○ R/W Mark. Fed.
29.54' Rt.
E Sta. 147+99.03
(Top Broken)

○ R/W Mark. Fed.
30.09' Lt.
E Sta. 142+96.09
OK

○ R/W Mark. Fed.
29.95' Rt.
E Sta. 142+96.21
OK

P.I. →
141+58.04
R.R. Spike set
2° 49' - 03.4" Rt.

E C.R. 130
N 79° 13' - 56.6" W

NO RECORD

FB 711

C.R. 130

Sta. 125+00 to C.R. 37
McArthur Twp., Logan Co., Ohio

207+58.40 - P.I. - R.R. Spike
Set - Intersection & C.R. 130
w/ & T.R. 56 - No Angle

206+50.65 - P.I. - R.R. Spike
set - Intersection & C.R. 130
w/ & T.R. 56 - No Angle

189+41.02 - P.O.T. - Mang Nail Set

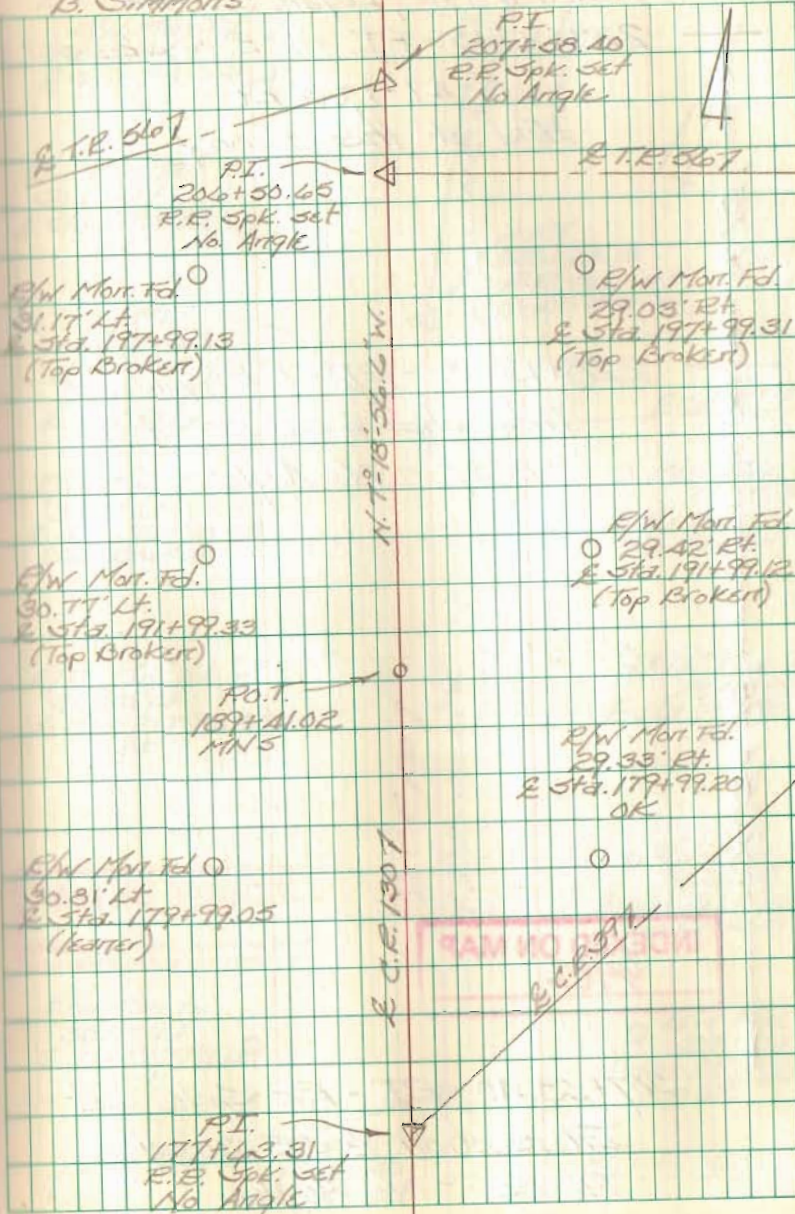
INDEXED ON MAP
9402

177+43.31 - P.I. - R.R. Spike set -
Intersection & C.R. 130 w/
& C.R. 39 - No Angle

C. Nichols
C. Dill
B. SIMMONS

March - May 01

57



FB 711

C.R. 130
Sta. 125+00 to C.R. 37
Arthur Twp., Logan Co., Ohio

228+23.13 - P.I. - R.R. Spike set

0°-47'-17.3" Rt.

End of this Survey

9.75'

228+13.38 - P.I. - R.R. Spike set -

Intersection & C.R. 130 w/ &

C.R. 37 - No Angle

2054.98'

INDEXED ON MAP

9482

207+58.10 - P.I. - R.R. Spike set -

Intersection & C.R. 130 w/ &

T.R. 56 - No Angle

C. Nichols

C. Dill

B. Simmons

March-May 01

53

R/W Mort. Fel.
30.00' Lt.
& Sta. 233+98.35
OK

R/W Mort. Fel.
30.00' Lt.
& Sta. 233+98.36
OK

P.I.
228+13.38
R.R. Spike set
No Angle
& C.R. 37

R/W Mort. Fel.
30.19' Lt.
& Sta. 221+98.58
(Top Broken)

R/W Mort. Fel.
30.95' Lt.
& Sta. 217+98.83
OK

R/W Mort. Fel.
30.77' Lt.
& Sta. 207+99.13
OK

R.R. 56 - P.I.
207+58.10
R.R. Spike set
No Angle

30.00'
N 4°-31'-37.3" W
To Mountaineer

P.I.
228+23.13
R.R. Spike set
0°-47'-17.3" Rt.

& C.R. 37

R/W Mort. Fel.
29.89' Rt.
& Sta. 221+99.17
(Top Broken)

R/W Mort. Fel.
29.48' Rt.
& Sta. 217+98.82
OK

R/W Mort. Fel.
29.46' Rt.
& Sta. 212+98.97
(Top Broken)

R/W Mort. Fel.
29.13' Rt.
& Sta. 207+99.21
OK

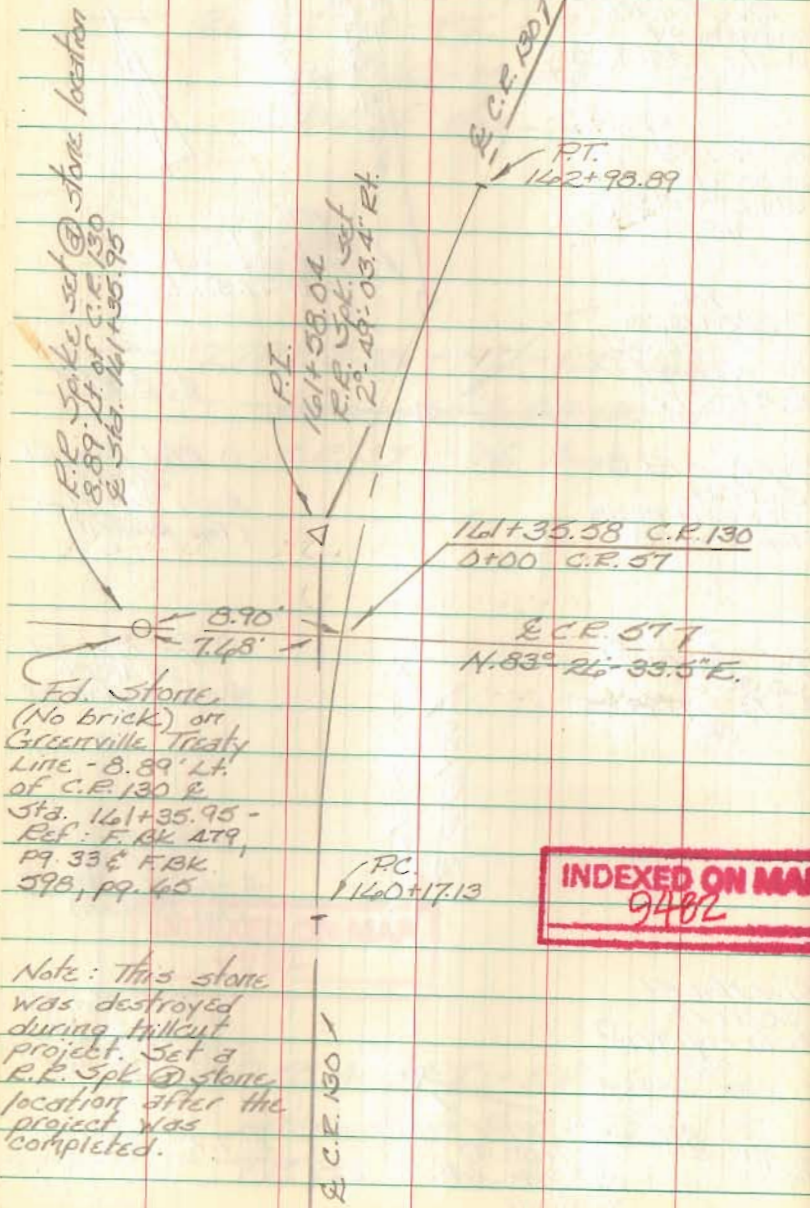
& T.R. 56

& C.R. 130
N 7°-18'-36.6" W

INDEXED ON MAP

FB 711

Intersection C.R. 130 W/ C.R. 57



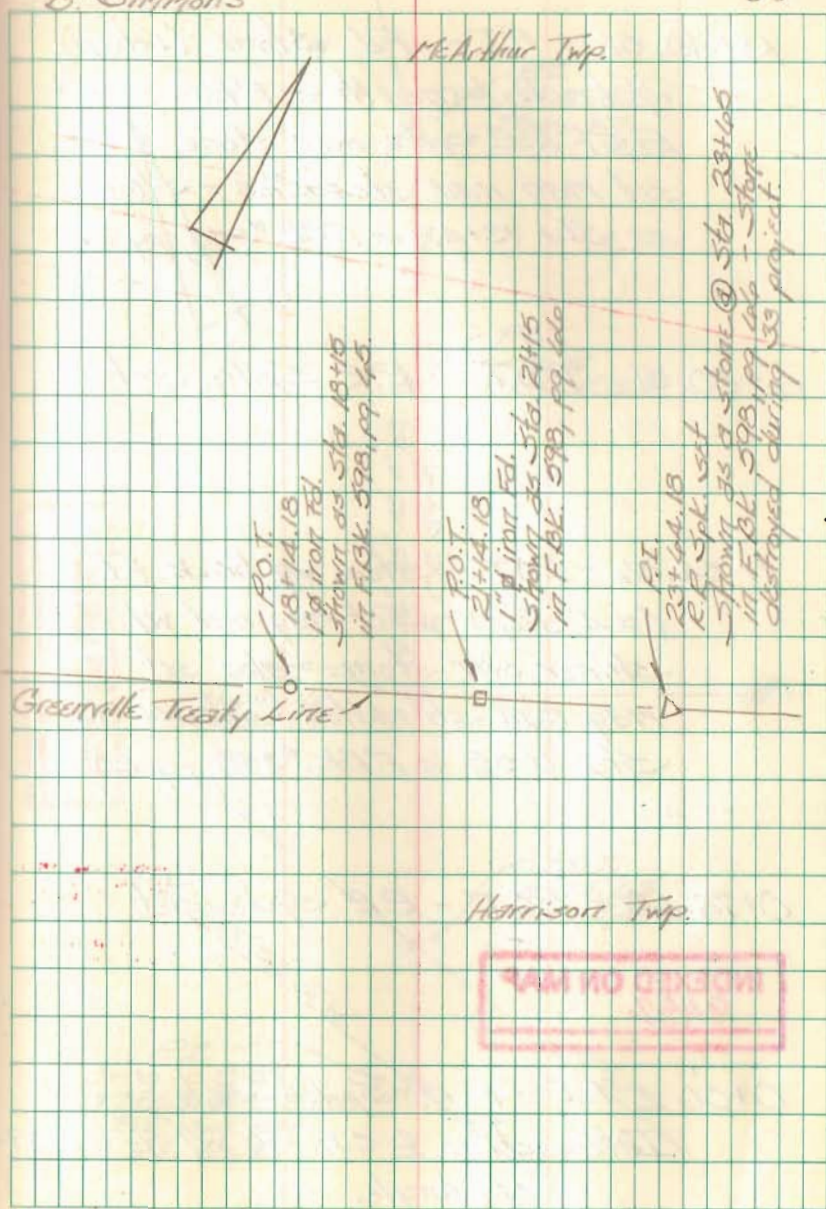
INDEXED ON MAP
9482

Note: This stone was destroyed during hillcut project. Set a R.P. 5pk @ stone location after the project was completed.

C. Nichols
C. Dill
G. Simmons

March - May 01

59



INDEXED ON MAP

FB 711

Intersection C.R. 130 w/ C.R. 39

13+40.52 - P.I. - Fd Stone (1' deep)
w/ brick beneath & R.R. Spike -
Reset R.R. Spike over stone &
set mag nail straddles - Shown
as Sta. 13+42 in F.B.K. #358, pg. 21.

4+80.51 - P.O.T. - R.R. Spike set

1+54.06 - P.O.T. - Stone w/ brick fd.
(\approx 4" deep) - Set mag nail w/
shiner over stone - also set
mag nail straddles - Shown as
Sta. 1+55 in F.B.K. #358, pg. 20.

0+73.43 - P.O.T. - R.R. Spike set

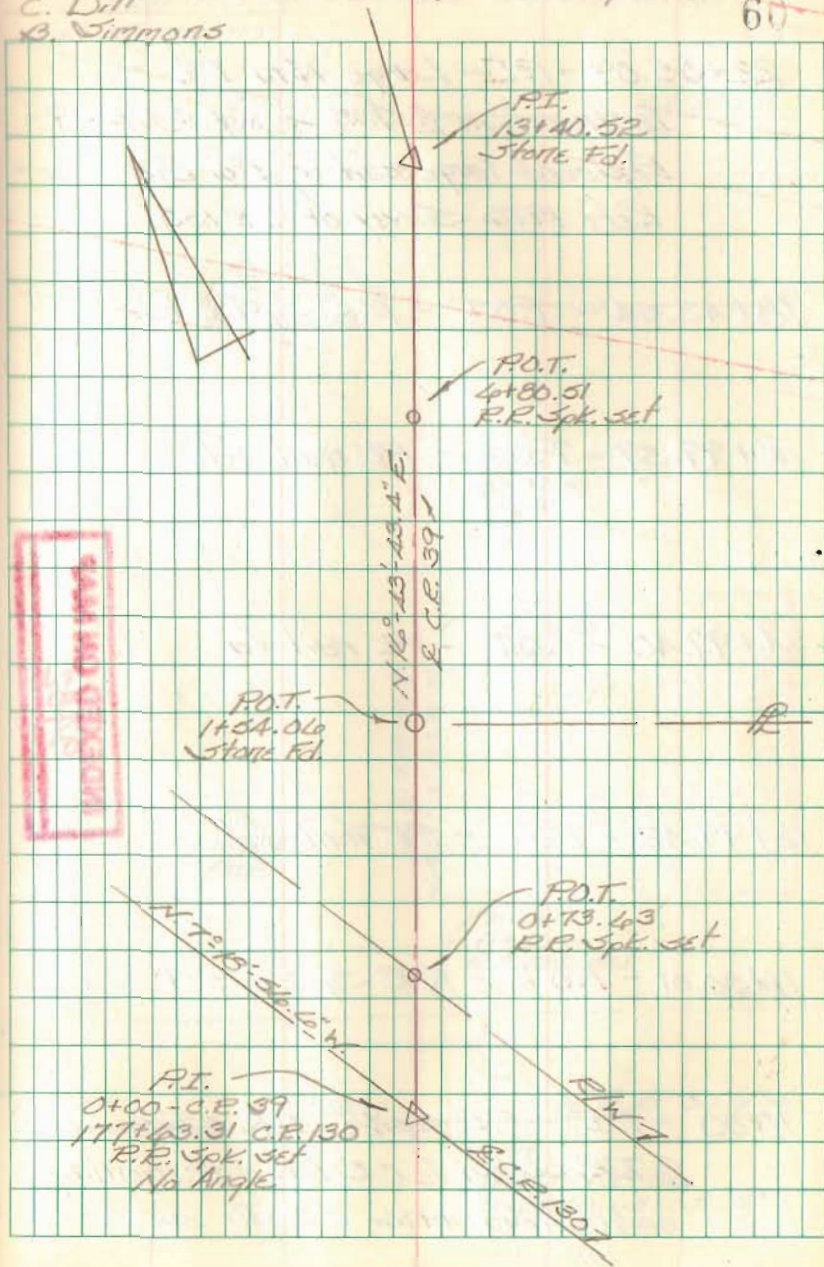
INDEXED ON MAP
9482

0+00 - P.I. - R.R. Spike set -
Intersection & C.R. 130 w/ & C.R. 39 -
No Angle

C. Nichols
C. Dill
B. Simmons

March - May 01

60



FB 711

Intersection C.R. 130 w/ T.R. 56

22+05.09 - P.I. - Large Nail Fd. -

Intersection E T.R. 56 w/ E C.R. 39 -

Replaced large nail w/ 1" dia. iron -

Ref: 1976 Survey of C.R. 130

18+43.54 - P.O.T. - R.R. Spike fd.

15+99.39 - P.O.T. - PK nail fd.

1A+99.40 - P.O.T. - PK nail fd.

12+99.42 - P.O.T. - PK nail fd.

11+30.01 - P.O.T. - R.R. Spike set

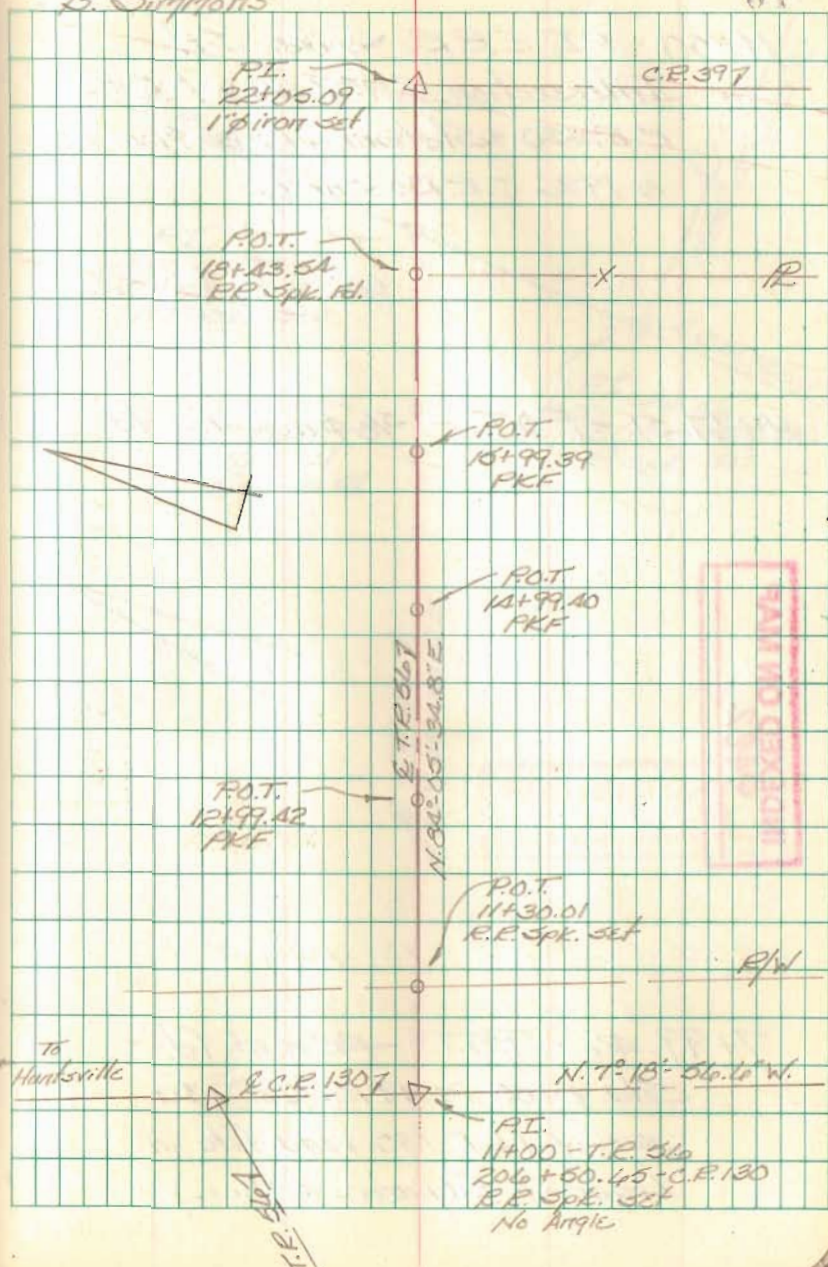
11+00 - P.I. - R.R. Spike Set - Intersection
E T.R. 56 w/ E C.R. 130 - Stationing
comes from a 1976 C.R. 130 survey

INDEXED ON MAP
9482

C. Nichols
C. Dill
B. Symmonds

March - May 01

61



INDEXED ON MAP

FB 711

Intersection C.R. 130 w/ T.R. 56

11+00 - P.I. - R.R. Spike Set -

Intersection E.T.R. 56 w/ E.

C.R. 130 - Stationing comes from

a 1976 C.R. 130 Survey.

10+47.51 - P.O.T. - 5/8" ϕ dia. iron fd.

INDEXED ON MAP
9482

7+99.46 - P.O.T. - PK mail fd. -

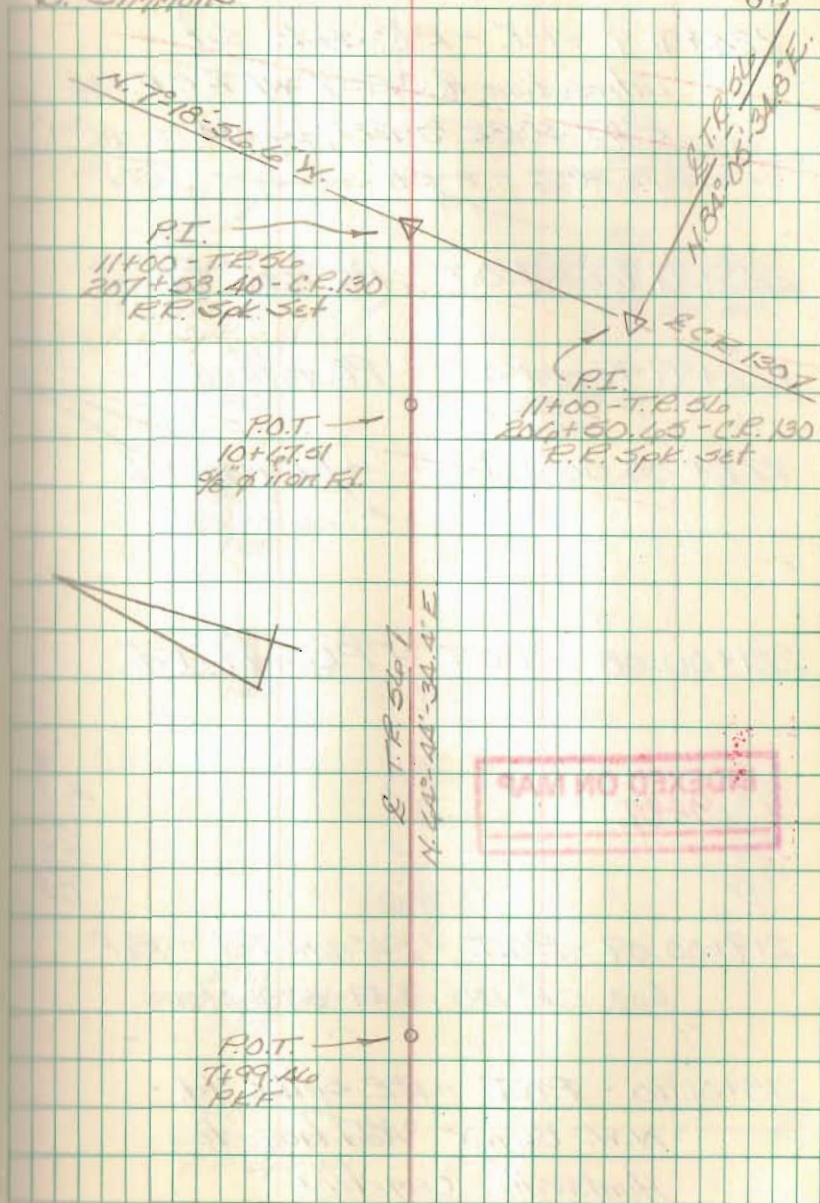
Sta. 8+00 in 1976 C.R. 130

survey (C.R. 130 road file in
Logan Co. Engineer's Office).

C. Nichols
C. Dill
D. Simmons

March - May 01

62



FB 711

Intersection C.R. 130 w/ C.R. 37

224+91.9 - P.I. - R.R. Spike Set -
Intersection of C.R. 37 w/ E C.R. 130 -
Ref: F.B.K. # 577, pg. 3A.

223+99.96 - P.O.T. - PK nail Fd.

222+99.99 - P.O.T. - PK nail Fd.

222+00.06 - P.O.T. - PK nail Fd.

221+00.08 - P.O.T. - PK nail Fd.

INDEXED ON MAP
9482

219+00.09 - P.O.T. - PK nail Fd. - Ref:
Log. C.R. 130 (5.49-5.73) plans

218+01.90 - P.O.T. - R.R. Spike Fd. -
N.W. Corner Addition to
Huntsville Cemetery

C. Nichols
C. Dill
B. Simmons

March - May 01

63

