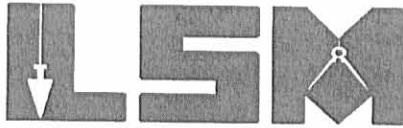


Received 4-12-04 OKJMH

# Lee Surveying and Mapping Co., Inc.

Land Surveys • Topography • Subdivisions • Construction Layout

117 N. Madriver St.  
Bellefontaine OH 43311



Phone: (937) 593-7335  
Fax: (937) 593-7444

## SEELEY 1.653 ACRES TRACT A

Lying in Section 13, Town 2, Range 15, Harrison Township, Logan County, Ohio.

Being out of the James Seeley 79.470 acre and 1.000 acre tracts as deeded and described in Volume 328, Page 321 of the Logan County Records of Deeds and being more particularly described as follows:

Beginning at a stone found in a monument box at the southwest corner of Section 13, on the center-line of Township Road 46 (60 feet wide).

THENCE, with the west line of Section 13 and the center-line of Township Road 46, N 3°-44'-00"E, a distance of 1218.17 feet to a MAG nail set at THE TRUE POINT OF BEGINNING.

THENCE, with the west line of Section 13 and the center-line of Township Road 46, N 3°-44'-00"E, a distance of 150.00 feet to a 5/8 inch iron rod set.

THENCE, with the south line of the Robert C. Roach original 76.44 acre tract (O.R. 246, Pg. 482), S 85°-41'-04"W, a distance of 480.00 feet to a 5/8 inch iron rod set, passing a 5/8 inch iron rod set at 30.00 feet.

THENCE, S 3°-44'-00"W, a distance of 150.00 feet to a 5/8 inch iron rod set.

THENCE, N 85°-41'-04"W, a distance of 480.00 feet to the point of beginning, passing a 5/8 inch iron rod at 450.00 feet.

Containing 1.653 acres of which 0.103 acre is within the highway right-of-way.

The basis for bearings is the west line of Section 13 being N 3°-44'-00"E, and all other bearings are from angles and distances measured in a field survey by Lee Surveying and Mapping Co., Inc. on April 5, 2004.

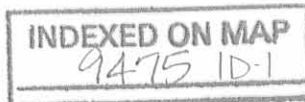


ORIGINAL STAMP IN GREEN

Description prepared by:

Jeffrey I. Lee  
Professional Surveyor 6359  
April 6, 2004

3790044



Received 4/12/04 OK gml

# Lee Surveying and Mapping Co., Inc.

Land Surveys • Topography • Subdivisions • Construction Layout

117 N. Madriver St.  
Bellefontaine OH 43311



Phone: (937) 593-7335  
Fax: (937) 593-7444

## SEELEY 1.653 ACRES TRACT B

Lying in Section 13, Town 2, Range 15, Harrison Township, Logan County, Ohio.

Being out of the James Seeley 79.470 acre tract as deeded and described in Volume 328, Page 321 of the Logan County Records of Deeds and being more particularly described as follows:

Beginning at the a stone found in a monument box at the southwest corner of section 13 and on the center-line of Township Road 46 (60 feet wide).

THENCE, with west line of Section 13 and the center-line of Township Road 46, N 3°-44'-00"E, a distance of 1068.17 feet to a MAG nail set at THE TRUE POINT OF BEGINNING.

THENCE, with the west line of Section 13 and the center-line of Township Road 46, N 3°-44'-00"E, a distance of 150.00 feet to a MAG nail set.

THENCE, S 85°-41'-04"E, a distance of 480.00 feet to a 5/8 inch iron rod set, passing a 5/8 inch iron rod set at 30.00 feet.

THENCE, S 3°-44'-00"W, a distance of 150.00 feet to a 5/8 inch iron rod set.

THENCE, N 85°-41'-04"W, a distance of 480.00 feet to the point of beginning, passing a 5/8 inch iron rod set at 450.00 feet.

Containing 1.653 acres of which 0.103 acre is within the highway right-of-way.

The basis for bearings is the west line of Section 13 being N 3°-44'-00"E, and all other bearings are from angles and distances measured in a field survey by Lee Surveying and Mapping Co., Inc. on April 5, 2004.

Description prepared by:

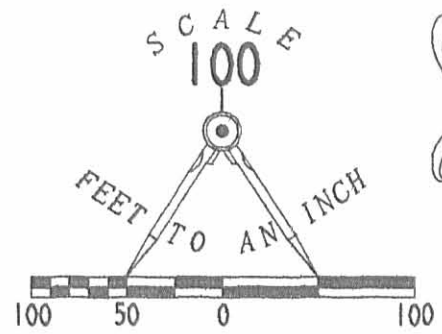


ORIGINAL STAMP IN GREEN

*Jeffrey I. Lee*  
Jeffrey I. Lee  
Professional Surveyor 6359  
April 6, 2004

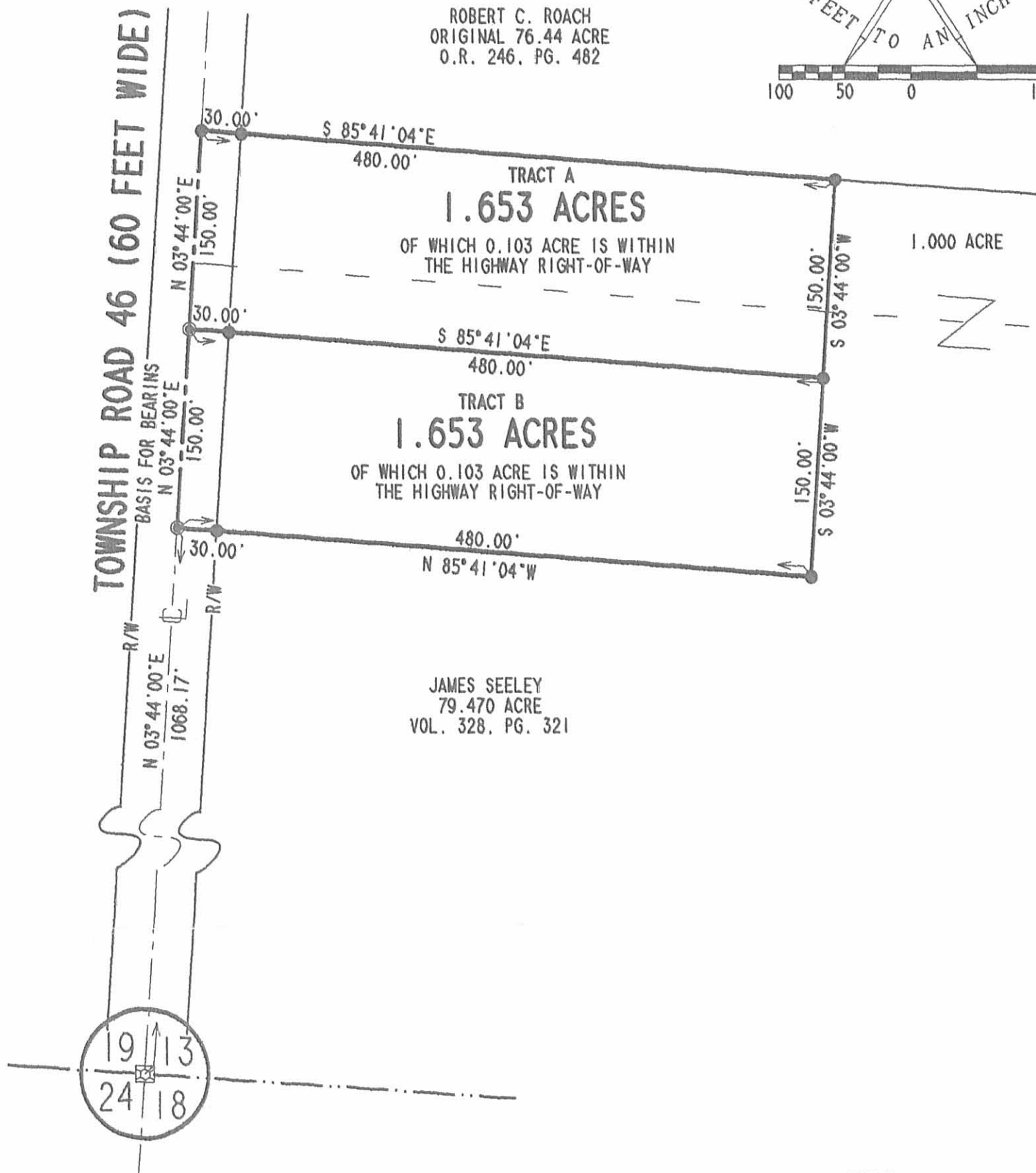
3790044





ROBERT C. ROACH  
ORIGINAL 76.44 ACRE  
O.R. 246, PG. 482

TOWNSHIP ROAD 46 (60 FEET WIDE)  
BASIS FOR BEARINGS



LEGEND

- 5/8 INCH IRON ROD SET
- MAG NAIL SET
- ☒ STONE FOUND IN MONUMENT BOX

A SURVEY OF  
TWO TRACTS OUT OF THE  
JAMES SEELEY  
79.470 ACRE AND 1.000 ACRE ACRE TRACT  
VOLUME 328, PAGE 321  
SECTION 13, TOWN 2, RANGE 15  
HARRISON TOWNSHIP  
LOGAN COUNTY, OHIO



ORIGINAL STAMP IN GREEN

SURVEYED BY:

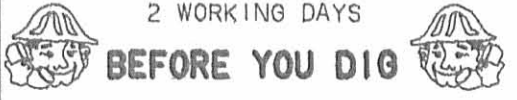
*Jeffrey I. Lee*  
JEFFREY I. LEE  
PROFESSIONAL SURVEYOR 6359  
APRIL 5, 2004

COPYRIGHT 2004 BY:

LEE SURVEYING & MAPPING CO., INC.  
117 North Madriver Street  
BELLEFONTAINE, OHIO 43311  
(937) 593-7335

INDEXED ON MAP  
9475 IP

2 WORKING DAYS



CALL TOLL FREE 800-362-2764  
OHIO UTILITIES PROTECTION SERVICE.

REC'D 5-12-11 smy OK

# Lee Surveying and Mapping Co., Inc.

Land Surveys • Topography • Subdivisions • Construction Layout

117 N. Madriver St.  
Bellefontaine OH 43311



Phone: (937) 593-7335  
Fax: (937) 593-7444  
surveys@lsminc.us

## SEELEY 93.318 ACRES

Lying in Section 13, Town 2, Range 15, Harrison Township, Logan County, Ohio.

Being all of the remainder of the Harriet Seeley original 81.78 acre tract, and original 4.56 acre tract and all of the 1 acre tract and 11.84 acre tract as deeded and described in Official Record 991, Page 881 Tract I, of the Logan County Records of Deeds and being more particularly described as follows:

Beginning at a stone found inside a monument box at the intersection of the southwest corner of Section 13 and the center-line of Township Road 46 (60 feet wide).

THENCE, with the west line of Section 13 and the center-line of Township Road 46, N 03°-44'-00"E, a distance of 1368.17 feet to a 5/8 inch iron rod found.

THENCE, with the lines of the Jean Roach original 76.44 acre tract (O.R. 815, Pg. 443, Parcel I, Tract 2) the following five courses:

S 85°-41'-04"E, a distance of 907.76 feet to a 5/8 inch iron rod set, passing a 5/8 inch iron rod set at 30.00 feet.

S 03°-44'-48"W, a distance of 49.59 feet to a 5/8 inch iron rod set.

S 85°-41'-56"E, a distance of 351.00 feet to a point in the Bokengehalas Creek, referenced by a 5/8 inch iron rod set that bears S 06°-02'-10"E, a distance of 20.00 feet.

N 83°-57'-50"E, with the center of Bokengehalas Creek, a distance of 429.10 feet to a point referenced by a 5/8 inch iron rod set that bears S 06°-02'-10"E, a distance of 20.00 feet.

N 82°-42'-50"E, with the center of Bokengehalas Creek, a distance of 561.40 feet to a point referenced by a 5/8 inch iron rod set that bears S 37°-56'-37"W, a distance of 27.98 feet.

THENCE, with the center of Bokengehalas Creek and the southwesterly lines of the Jean Roach 2.31 acre tract (O.R. 815, Pg. 443, Tract 4) and the Jean Roach 2.53 acre tract (O.R. 815, Pg. 443, Tract 3), S 24°-38'-36"E, a distance of 914.00 feet to a point referenced by a 5/8 inch iron rod set that bears S 47°-34'-47"W, a distance of 13.96 feet.

THENCE, with the center of the Bokengahalas Creek, the south line of the said 2.53 acre tract and the south line of the remainder of the Jean Roach original 168.9 acre tract (O.R. 815, Pg. 443, Parcel I, Tract 1), S 52°-55'-54"E, a distance of 233.46 feet to a point referenced by a 5/8 inch iron rod set that bears S 39°-14'-20"W, a distance of 15.61.

THENCE, with the center of the Bokengahalas Creek and the southern lines of the aforesaid 168.9 acre tract the following three courses:

S 57°-21'-25"E, a distance of 500.58 feet to a point referenced by a 5/8 inch iron rod set that bears S 34°-20'-00"W, a distance of 20.13 feet.

S 74°-41'-57"E, a distance of 281.56 feet to a point referenced by a 5/8 inch iron rod set that bears S 22°-23'-02"W, a distance of 19.20 feet.

S 55°-45'-01"E, a distance of 604.74 feet to a point.



# Lee Surveying and Mapping Co., Inc.

Land Surveys • Topography • Subdivisions • Construction Layout

117 N. Madriver St.  
Bellefontaine OH 43311



Phone: (937) 593-7335  
Fax: (937) 593-7444  
surveys@lsminc.us

THENCE, with the north line of Section 18 and the north line of the R. Herbert Hill, Trustee 40 acre tract (O.R. 179, Pg. 482, Parcel II) N 85°-24'-00"W, a distance of 1413.80 feet to a 5/8 inch iron rod set.

THENCE, with the north line of Section 18 and the north line of the Thomas L. Jutte and Vivian G. Jutte 116.671 acre tract (O.R. 290, Pg. 529) N 85°-36'-46"W, a distance of 2683.61 feet to the point of beginning, passing a 5/8 inch iron rod set at 2653.81 feet.

Containing 93.318 acres of which 0.942 acre is within the highway right-of-way.

Property is subject to any and all previous easements and rights-of-way of record.

The basis for bearings is the west line of Section 13, being N 03°-44'-00"E, and all other bearings are from angles and distances measured in a field survey by Lee Surveying and Mapping Co., Inc. on May 9, 2011.

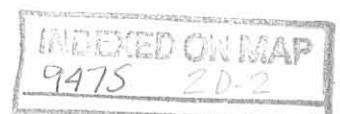


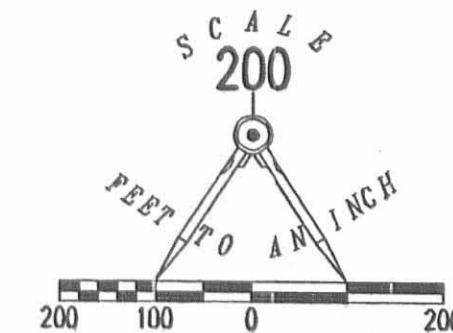
Description prepared by:

A handwritten signature in black ink that reads 'William K. Bruce'.

William K. Bruce  
Professional Surveyor 7437  
May 9, 2011

L-37900511





LEGEND

- 5/8 INCH IRON ROD SET WITH PLASTIC I.D. STAMPED "LSM 7437"
- ⊠ STONE FOUND INSIDE MONUMENT BOX
- 5/8 INCH IRON ROD FOUND

TOWNSHIP ROAD 46 (60')

BASIS FOR BEARINGS  
N 03°44'00" E  
7368.17'

FLAT BRANCH CREEK

BOKENGEHALAS CREEK

BOKENGEHALAS CREEK

A RETRACEMENT SURVEY OF THE  
 HARRIET SEELEY  
 ORIGINAL 81.78 ACRE TRACT,  
 ORIGINAL 4.56 ACRE TRACT,  
 1 ACRE TRACT  
 AND THE 11.84 ACRE TRACT  
 OFFICIAL RECORD 991, PAGE 881 TRACT I  
 SECTION 13, TOWN 2, RANGE 15  
 HARRISON TOWNSHIP  
 COUNTY, OHIO

93.318 ACRES

OF WHICH 0.942 ACRE IS WITHIN THE HIGHWAY  
RIGHT-OF-WAY.

TOWN 2, RANGE 15  
TOWN 3, RANGE 14

THOMAS L. JUTTE AND VIVAN G. JUTTE  
116.671 ACRE TRACT  
O.R. 290, PG. 529

R. HERBERT HILL, TRUSTEE  
40 ACRE TRACT  
O.R. 179, PG. 482  
PARCEL II

JEAN ROACH  
2.31 ACRE TRACT  
O.R. 815, PG. 443  
TRACT 4

JEAN ROACH  
2.53 ACRE TRACT  
O.R. 815, PG. 443  
TRACT 3

JEAN ROACH  
ORIGINAL 168.9 ACRE TRACT  
O.R. 815, PG. 443  
PARCEL I TRACT 1

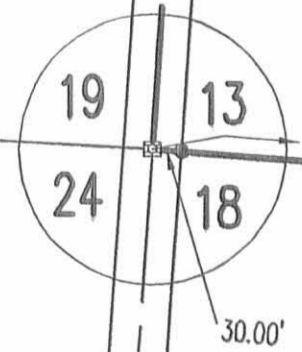
HARRIET SEELEY  
ORIGINAL 11.84 TRACT  
O.R. 991, PG. 881  
TRACT I

HARRIET SEELEY  
1 ACRE TRACT  
O.R. 991, PG. 881  
TRACT I

HARRIET SEELEY  
ORIGINAL 81.78 ACRE TRACT  
O.R. 991, PG. 881  
TRACT I

HARRIET SEELEY  
ORIGINAL 4.56 TRACT  
O.R. 991, PG. 881  
TRACT I

JEAN ROACH  
ORIGINAL 76.44 ACRE TRACT  
O.R. 815, PG. 443  
PARCEL I TRACT 2



SURVEYED BY:

WILLIAM K. BRUCE  
PROFESSIONAL SURVEYOR 7437  
MAY 9, 2011

COPYRIGHT 2011 BY:  
LEE SURVEYING & MAPPING CO., INC.  
117 North Madriver Street  
BELLEFONTAINE, OHIO 43311  
(937) 593-7335  
surveys@lsmcinc.us

INDEXED ON MAP  
9475 ZP