

SURVEY OF CONRAIL PROPERTY

HARRISON TOWNSHIP

Logan County, Ohio

Sec. 12-T.3-R.14

June 1993

The following description describes a parcel of real estate owned by Consolidated Rail Corporation (Conrail), formerly the Cincinnati, Sandusky, and Cleveland Railroad Company. Said real estate is located in Harrison Township, Logan County, Ohio, and is part of the S.E. quarter of section 12, town 3, range 14. Above mentioned parcel is more particularly described as follows:

Beginning at a stone found at the NE corner of the SE quarter of section 12, town 3, range 14. Said stone marks the intersection of Logan County Road No. 32, and Logan County Road No. 13, and is shown as being station 12 + 63.5 on a route survey of C.R. No. 13, recorded in Logan County Engineer's Field Book No. 598, page 38.

Thence, with the centerline of Logan County Road No. 13, N 85°-28'-00"W, 992.56 feet to a railroad spike set. Said railroad spike being the NW corner of Helen Mae Faulkner's 0.71 acre tract (D.B. Vol. 396, pps. 765 & 767) and is the true point of beginning for this description.

Thence, with Faulkner's West line and the West line of the Logan County Commissioner's 16.57 acre tract (D.B. Vol. 200, pg. 470; D.B. Vol. 323, pg. 530; D.B. Vol. 385, pg. 595), S 22°-38'-11" E, 774.86 feet to a 5/8 inch diameter capped iron set. The above described line passes a 5/8 inch diameter capped iron set on the South right-of-way line of Logan County Road No. 13 at 33.72 feet.

Thence, 1159.18 feet with a curve to the left to a 5/8 inch diameter capped iron set. Said curve has a radius of 6094.18 feet, and a central angle of 10°-53'-54". The long chord of said curve bears S 28°-05'-08"E, and is 1157.44 feet in length. Said curved line passes a 5/8 inch diameter capped iron set on the West right-of way line of Logan County Road No. 32 at 1148.71 feet. The above described curved line also being the West line of the Logan County Commissioners 16.57 acre tract and Jan Michael Derr, etux's 2.16 acre tract (D.B. Vol. 354, pg. 196).

Thence, S 33°-32'-05" E, 38.52 feet to a railroad spike set on the centerline of Logan County Road No. 32.

Thence, with the centerline of Logan County Road No. 32, S 4°-13'-54" W, 163.28 feet to a railroad spike set.

Thence, with the East line of the Logan County Commissioner's 0.30 acre tract (D.B. Vol. 139, pg. 144) and Emery L. Meredith, etal's 127.738 acre tract (D.B. Vol. 331, pg. 892; O.R. Vol. 46, pg. 140), N 33°-32'-05" W, 167.60 feet to a 5/8 inch diameter capped iron set. The above described line passes a 5/8 inch diameter capped iron set on the West right-of-way line of Logan County Road No. 32 at 48.98 feet.

INDEXED ON MAP
8860 1D-1

Thence, 1178.21 feet with a curve to the right, to a 5/8 inch diameter capped iron set. Said curve has a radius of 6194.18 feet and a central angle of $10^{\circ}-53'-54''$. The long chord bears $N 28^{\circ}-05'-08'' W$ and is 1176.43 feet in length. The above described curved line being the East line of Meredith's 127.738 acre tract.

Thence, continuing with Meredith's East line, $N 22^{\circ}-38'-11'' W$, 826.19 feet to a railroad spike set on the centerline of Logan County Road No. 13. The above described line passes a 5/8 inch diameter capped iron set on the South right-of-way line of Logan County Road No. 13 at 792.47 feet.

Thence, with the centerline of Logan County Road No. 13, $S 85^{\circ}-28'-00'' E$, 112.40 feet to the point of beginning.

The above described tract contains 4.757 acres, more or less, 0.077 acres of which is contained within the right-of-way of Logan County Road No. 13, and 0.113 acre as found within the right-of-way of Logan County Road No. 32.

The above described tract is the same parcel transferred through the following deeds:

D.B. Vol. 100, pg. 430

D.B. Vol. 137, pps 95 & 96

D.B. Vol. 117, pg. 108

Basis of bearing being the centerline of Logan County Road No. 13($N 85^{\circ}-28'-00'' W$) as shown in the Field Book No. 589, pg. 39.

Caps placed on irons set are stamped "Logan County Engineer".

The above description represents an actual field survey performed by the Logan County Engineer's Office in September, 1992. All angles and distances were measured in the field.

Curtis D. Dill

Curtis D. Dill, P.S.
Deputy Surveyor
Logan County Engineer's Office
Registered Survey No. 7310
Bellefontaine, Ohio 43311



INDEXED ON MAP
8860 1D-2

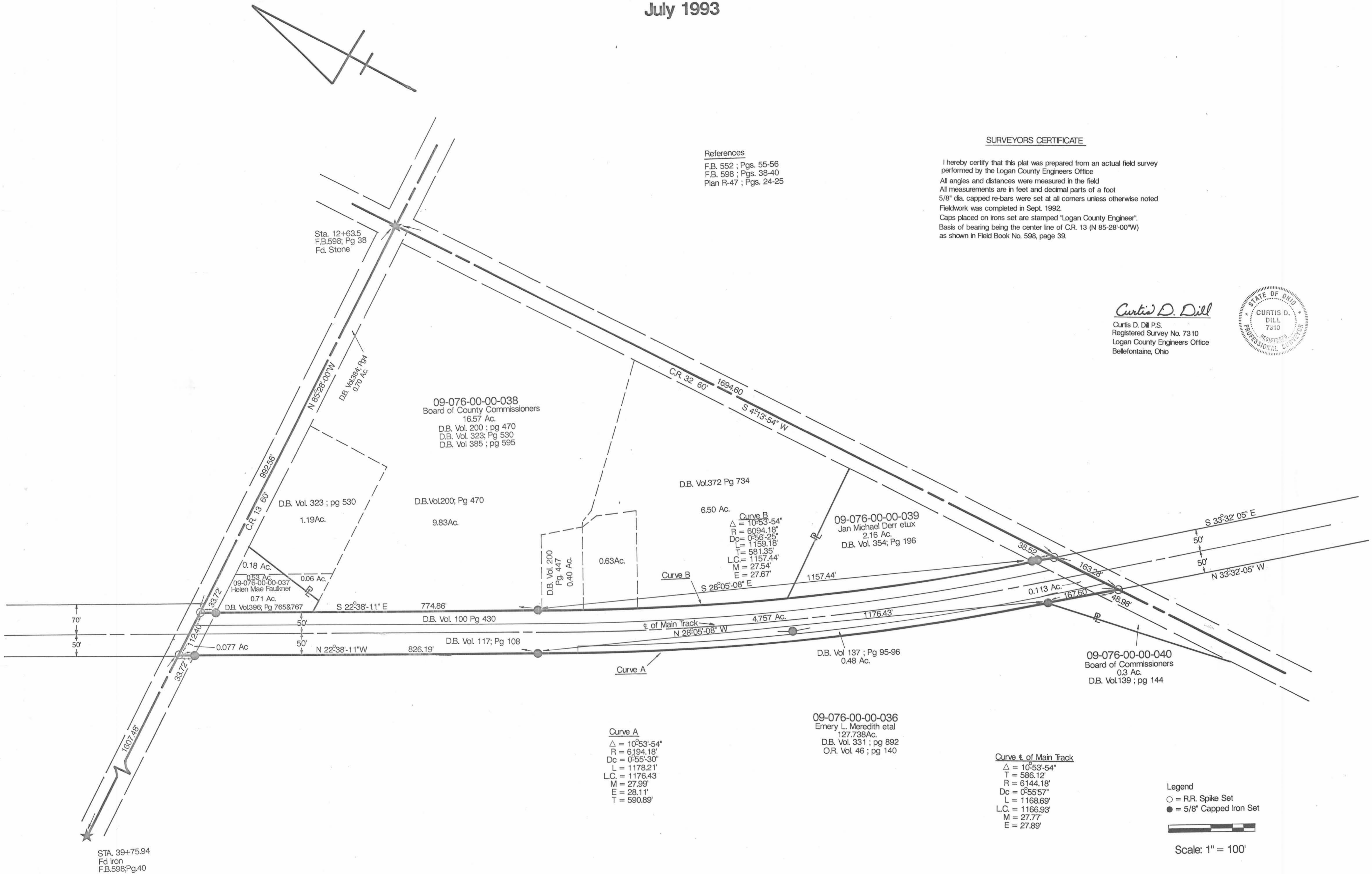
**SURVEY OF CONRAIL PROPERTY
HARRISON TOWNSHIP
LOGAN COUNTY, OHIO
Sec. 12 - T. 3 - R. 14
July 1993**

References
F.B. 552 ; Pgs. 55-56
F.B. 598 ; Pgs. 38-40
Plan R-47 ; Pgs. 24-25

SURVEYORS CERTIFICATE

I hereby certify that this plat was prepared from an actual field survey performed by the Logan County Engineers Office. All angles and distances were measured in the field. All measurements are in feet and decimal parts of a foot. 5/8" dia. capped re-bars were set at all corners unless otherwise noted. Fieldwork was completed in Sept. 1992. Caps placed on irons set are stamped "Logan County Engineer". Basis of bearing being the center line of C.R. 13 (N 85-28'-00"W) as shown in Field Book No. 598, page 39.

Curtis D. Dill
Curtis D. Dill P.S.
Registered Survey No. 7310
Logan County Engineers Office
Bellevue, Ohio



Curve A
 $\Delta = 10^{\circ}53'-54''$
 $R = 6194.18'$
 $Dc = 0^{\circ}55'-30''$
 $L = 1178.21'$
 $L.C. = 1176.43'$
 $M = 27.99'$
 $E = 28.11'$
 $T = 590.89'$

09-076-00-00-036
Emery L. Meredith et al
127.738Ac.
D.B. Vol. 331 ; pg 892
O.R. Vol. 46 ; pg 140

Curve ϵ of Main Track
 $\Delta = 10^{\circ}53'-54''$
 $T = 586.12'$
 $R = 6144.18'$
 $Dc = 0^{\circ}55'-57''$
 $L = 1168.69'$
 $L.C. = 1166.93'$
 $M = 27.77'$
 $E = 27.89'$

Legend
○ = R.R. Spike Set
● = 5/8" Capped Iron Set



Scale: 1" = 100'