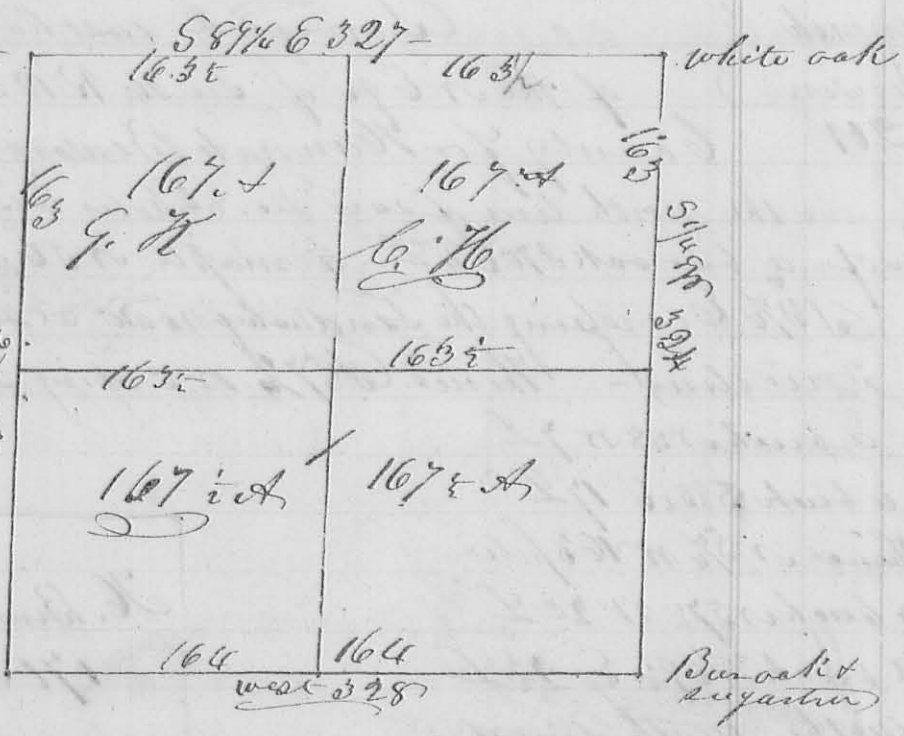


164 thence S 89 1/4 E, crossing a road at 234 poles, one at 260 poles) 327 poles to the corner of Sec 6+12, a white oak S 7 1/2 W 62 No or 74 E 26 L. thence S 7 1/2 W, crossed a road at 78 poles one at 120 poles, a branch at 236 poles & one at 312 poles) 324 poles to the corner of Sec 5+6, 11+12 a bur oak or 37 W 26 L a sugar tree N 60 E 10 L now down, thence between p 11+12 west crossing Jack's run at 40 poles a small pond at 138, 328 poles to the

beginning  
The 1<sup>st</sup> division  
line begins  
at the original  
gr. sec corner in  
the south line of  
the sec. a white  
oak (S 47 E 28 L  
(the other bearing  
tree is down)  
it is 164 poles from  
each corner  
thence  
crossing



2 branches) 325 poles to a stake in the north line 163 1/2 poles from either corner

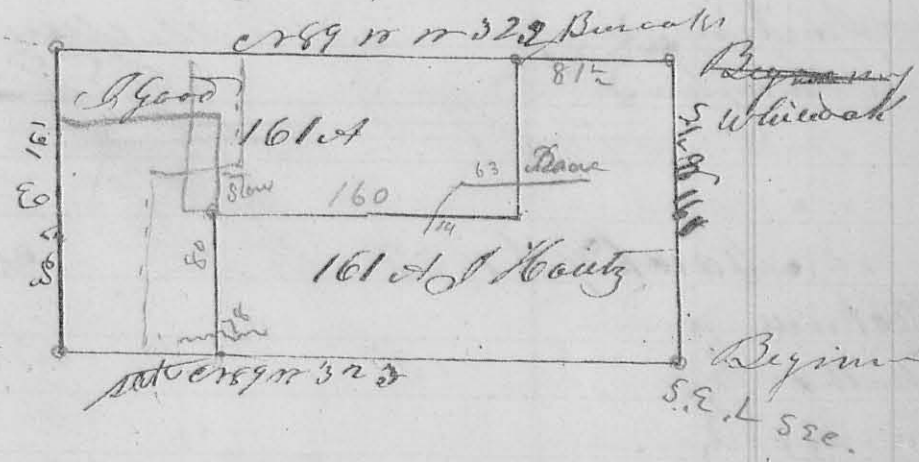
The 2<sup>nd</sup> division line begins at the original gr. sec corner in the east line of the sec. 163 poles from the e. r. e. corner of the sec a red oak or 84 E 21 L a white or 76 W 14 L thence or 89 1/2 W, cross, a branch) 327 poles to a white oak or 23 E 20 L a white oak 10 E 16 L in the west line 163 poles from the e. r. w. corner of said sec

Henry McPherson }  
John Hautz }  
John McPherson }  
John Hautz }

John Hautz }  
Jacob Good }  
1889 }  
12<sup>th</sup> Mo. Dec. 7 1832 Survey of 203  
the South half of sec 4  
for John Hautz and Jacob  
Good Beginning in the north line at the S. E. corner

of said sec. a white oak 161 N 13 E, a white oak N 50 E  
 53 S, thence between sec 3 & 4 & 189 W crossing a branch  
 at 248 poles) 323 poles to the corner of sec 3 & 4 9 & 10 a  
 black oak N 34 E 12 S a white oak 166 W 46 S thence  
 Sec 3 4 & 10 N 1/2 E crossing a spring branch at 98 poles) 160  
 poles to the original gr sec corner, a white oak N 2 E 50 S  
 a white oak 115 N 25 S, the latter is down thence 189 1/2  
 (crossing a branch at 298 poles), 322 poles to a small bur oak  
 in the east line of the sec - thence S 1/2 W crossing a branch  
 at 160 poles) 160 poles to the beginning containing 322  
 acrs

The division  
 line begins  
 in the north  
 line of the sec.  
 81 1/2 poles from  
 the corner of  
 the gr a bur oak



east 6 S a bur oak oak N 43 W 13 S - thence S 1/2 W crossed  
 a mill race at 63 poles) 80 poles to a white oak N 42 E  
 16 S thence E 189 1/4 W crossed the mill race at 14 poles -  
 160 poles to a stone - thence S 1/2 W crossing a branch  
 at 78 poles 80 poles to a stake in a prairie in the south  
 line of the sec -

J. Mead } 2<sup>nd</sup> mo. Feb. 1833 } Survey No 204 (8290)  
 J. Mease } Surveyed the south half of sec  
 No 204 } 1/4 R 13 M. S. for Isaac Mead & John Mease  
 Beginning at the corner of sec 3, 4, 9 & 10 a hickory  
 north 5 S oak & sic Book

a hickory S 24 E 16 S  
 thence between  
 sec 3 & 4 East 326  
 poles to the corner  
 between 3 & 4 a  
 black oak S 61 E 13 S 13 y

