

REBA CLARK  
39.94 AC.

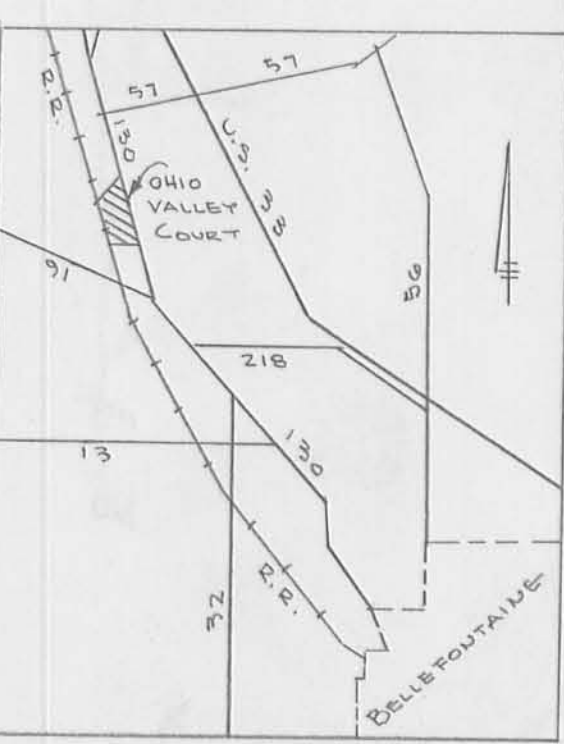
PROPERTY LINE

LOGAN ROAD

LOGAN ROAD 50' WIDE

HARRISON ROAD 50' WIDE

COUNTY HIGHWAY No. 130



LOCATION MAP

RAY BELL  
35.43 AC.

FLAT

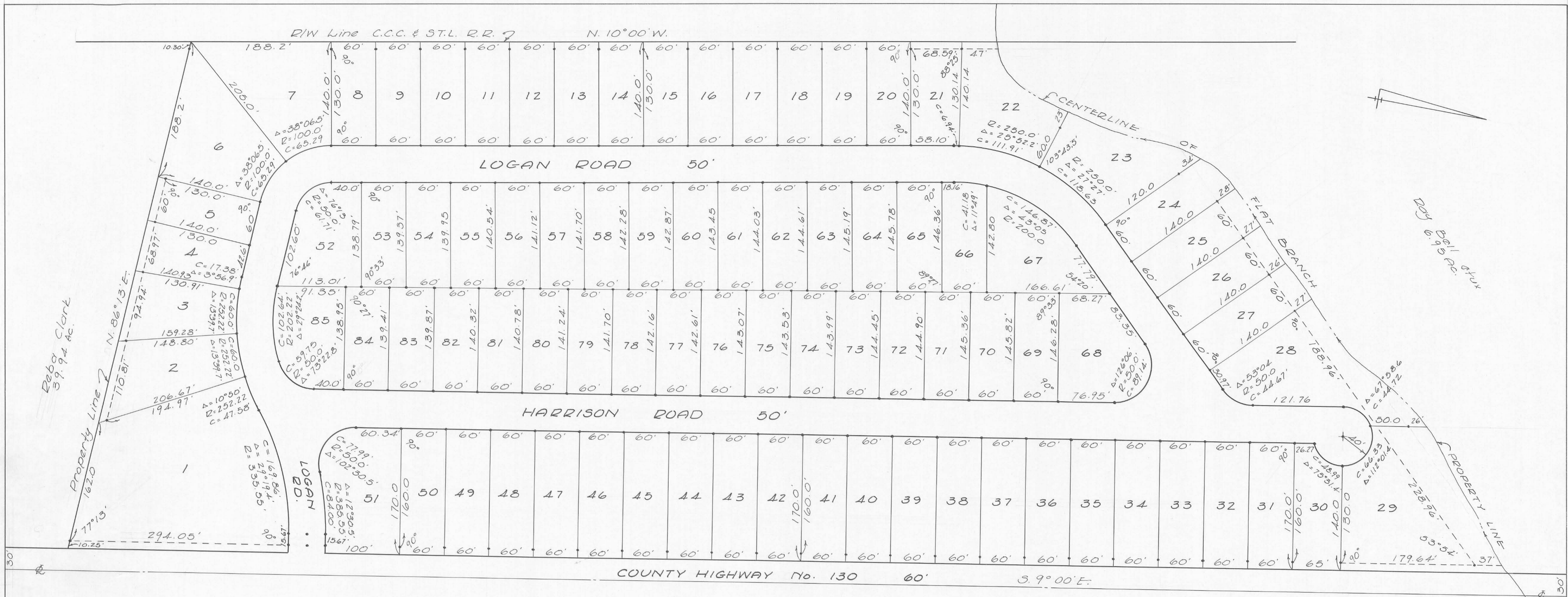
BEACH

APPROVAL

4-27-70  
DATE  
*Sen E. Miller* MO.  
LOGAN COUNTY BOARD OF HEALTH  
*Ralph Swick*  
*Raymond Westfall* Pres.  
*Gordon Graham*  
*Harry Wilson*  
Robert G. Lynn Secy.  
HARRISON TOWNSHIP ZONING COMMISSION  
DATE LOGAN COUNTY ENGINEER  
DATE CITY OF BELLEFONTAINE PLANNING COMMISSION

PRELIMINARY PLAT OF  
OHIO VALLEY COURT  
SEC. 8 T-2 R-15  
HARRISON TOWNSHIP  
LOGAN COUNTY, OHIO  
APRIL, 1970  
SCALE 1" = 60'  
OWNER  
RAYMOND BELL  
R.R. 1  
HUNTSVILLE, OHIO

DAN L. DOBSON  
REG. SURVEYOR 4210  
BELLEFONTAINE, OHIO



**APPROVAL**

7-6-70 Date Sen E Miller Wm. Logan County Board of Health

7-1-70 Date Raymond Watkins Gordon Graham Harry A Wilson Robert J. Lynn Harrison Township Zoning Commission

June 26, 1970 Date Chester R. Kurtz Logan County Engineer

The annexed plat is hereby approved and accepted by the Board of Logan County Commissioners at a regular meeting this 10<sup>th</sup> day of July 1970.

Don Downing  
Henry C. Tenill  
John R. Imker  
Logan County Commissioners

the within lots transferred this 13<sup>th</sup> day of July 1970.

Chas. H. Chamberlain  
Logan County Auditor

199431

Received for record at 1:31 O'clock P.M. on this the 13<sup>th</sup> day of July 1970.  
Recorded in Plat Book 6, Volume E Page 39.

Ruth Royer  
Logan County Recorder

KNOW ALL MEN BY THESE PRESENTS That Ray Bell and Rene Bell, proprietors of the land indicated on the accompanying plat have authorized the platting thereof and do hereby dedicate the Streets to the public use forever.

Marilyn Scott Ray Bell  
Mary Jean Colake Rene Bell  
Witness Proprietors

STATE OF OHIO 55  
COUNTY OF LOGAN

BE IT REMEMBERED that on this the 26<sup>th</sup> day of JUNE in the year of our Lord One Thousand Nine Hundred and Seventy, before me a notary public in and for said County, personally came Ray Bell and Rene Bell, grantors in the foregoing dedication, who acknowledged the signing thereof to be their free and voluntary act and deed.

J. MacAlpine Smith  
Notary Public  
My Commission Expires  
J. MacAlpine Smith, Attorney at Law  
Notary Public, State of Ohio  
My commission has no expiration date.  
Section 147.03 R.C.

Harrison Road and Logan Road shall be constructed in compliance with the minimum requirements of the Logan County Engineer and maintenance thereof shall remain the responsibility of the grantors until said Streets are approved and accepted by the Logan County Engineer.

Marilyn Scott Ray Bell  
Mary Jean Colake Rene Bell  
Witness Grantors

The within Streets are hereby approved and accepted this day of July 1970.

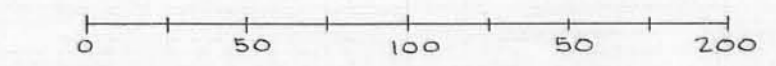
Logan County Engineer

The accompanying plat represents a Subdivision of land in Section 7, Town 2, Range 15 B.M.R.S., Harrison Township, Logan County, Ohio. The tract has an area of 20.78 acres in lots and 5.70 acres in Streets, making a total of 26.48 acres. Streets are 50 feet wide. • indicates 3/8" Bars set. All measurements are in feet and decimals of a foot. Measurements on curves are chord distances. I hereby certify that the accompanying plat is a correct representation of OHIO VALLEY COURT as surveyed May, 1970

Dan L. Dodson  
Dan L. Dodson  
Reg. Surveyor 4270

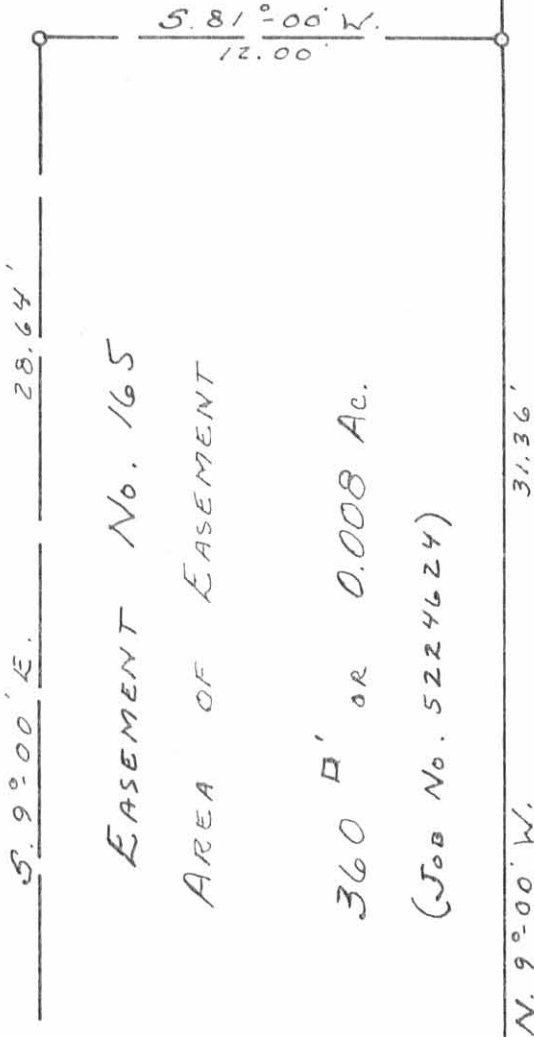


OHIO VALLEY COURT  
SEC. 7 T-2 R-15  
HARRISON TOWNSHIP  
LOGAN COUNTY, OHIO  
1970  
SCALE 1" = 60'



Lot No. 1

ARCHIE ELLIOT JR.  
VOL 383 P. 997  
(7-3-79)



EASEMENT No. 165  
AREA OF EASEMENT  
360  $\text{sq ft}$  OR 0.008 AC.  
(JOB No. 5224624)

C. H. No. 130 - 60' R/W.

159.95' to IRON BAR  
S. 86°-13' E.  
2.05'  
5/8" IRON BAR FP.  
10.25'  
12.30'  
REBA CLARK

N. 9°-00' W.  
31.36'

0 - 5/8" X 30" REBARS SET.

ELLIOT TO U.T.S.  
PART OF LOT NO. 1  
OHIO VALLEY COURT  
SECTION 7 T.2 R. 15 B.M.R.S.  
HARRISON TOWNSHIP  
LOGAN COUNTY, OHIO  
AUGUST 28, 1982

SCALE: 1" = 5.0'

INDEXED ON MAP  
6766 IP

SURVEYED AND PLATTED BY:  
DANIEL E. GILBERT, P.S.  
REG. SUR. NO. 5402  
1041 N. MAIN ST.  
BELLEFONTAINE, OHIO 43311

BELL SUBDIVISION  
HARRISON TWP  
OHIO VALLEY COURT

C.H. 130 R/W Plan L-27

R.R. R/W Plan R-47



458.53

INDEXED ON MAP  
6766

Dodson  
Arist

4/18/70  
70°

42

