

1 RECID 5-3-05 811011

Lee Surveying and Mapping Co., Inc.

Land Surveys • Topography • Subdivisions • Construction Layout

117 N. Madriver St.
Bellefontaine OH 43311



Phone: (937) 593-7335
Fax: (937) 593-7444

1975 - 2005 - 30 YEARS OF EXCELLENCE

COMMISSIONERS OF LOGAN COUNTY, OHIO

3.000 ACRE

Lying in Section 7, Town 2, Range 15, Harrison Township, Logan County, Ohio.

Being out of the Commissioners of Logan County, Ohio original 164.35 acre tract as deeded and described in Volume T, Page 177 of the Logan County Records of Deeds and being more particularly described as follows:

Beginning at a stone found at a northeast corner of the said 164.35 acre tract and in the west line of the Mac-O-Cheek, Inc. 90.26 acre tract (O.R. 159, Pg. 97, Tract IV) on the east line of Section 13.

THENCE, with the east line of Section 13 and a west line of the said 90.26 acre tract S 4°-07'-13"W, a distance of 406.90 feet to a stone found.

THENCE, with a south line of said 90.26 acre tract, S 63°-21'-15"E, a distance of 159.17 feet to a 5/8 inch iron rod set at THE TRUE POINT OF BEGINNING.

THENCE, with the south line of said 90.26 acre tract, S 63°-21'-15"E, a distance of 472.58 feet to a 5/8 inch iron rod set.

THENCE, S 27°-42'-00"W, a distance of 327.63 feet to a MAG nail set referenced by a 5/8 inch iron rod found at S 62°-18'-00"E, 25.00 feet at Station 247+00 Logan County Engineer's Field Book 552, Pg.55, passing a 5/8 inch iron rod set at 297.63 feet.

THENCE, with the center-line of County Highway 91 (60 feet wide), N 62°-18'-00"W, a distance of 334.09 feet to a MAG nail set.

THENCE, N 4°-14'-30"E, a distance of 347.67 feet to the point of beginning, passing a 5/8 inch iron rod at 32.70 feet.

Containing 3.000 acres of which 0.235 acre is within the highway right-of-way.

The basis for bearings is the center-line of County Highway 91 being N 62°-18'-00"W, and all other bearings are from angles and distances measured in a field survey by Lee Surveying and Mapping Co., Inc. on April, 29, 2005



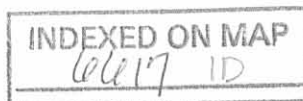
ORIGINAL STAMP IN GREEN

Description prepared by:

A handwritten signature in black ink, appearing to read 'Jeffrey J. Lee', written over the text of the signature block.

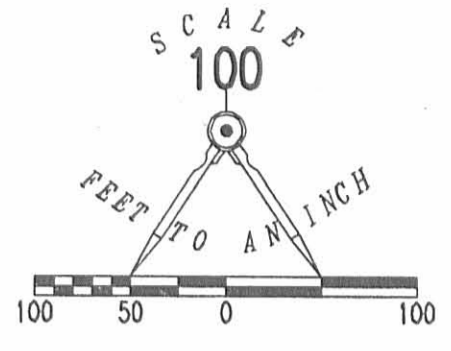
Jeffrey J. Lee
Professional Surveyor 6359
May 2, 2005

L-1749045



REC'D 5-3-05 8MM DL

COMMISSIONERS OF LOGAN COUNTY, OHIO
ORIGINAL 164.35 ACRE TRACT
VOL. T, PG. 177



- LEGEND
- 5/8 INCH IRON ROD SET
 - ⊙ MAG NAIL SET
 - ⊠ STONE FOUND
 - 5/8 INCH IRON ROD FOUND

MAC-O-CHEEK, INC.
90.26 ACRE TRACT
O.R. 159, PG. 97
TRACT IV

SECTION 13
SECTION 7

3.000 ACRE
OF WHICH 0.235 ACRE IS WITHIN THE
HIGHWAY RIGHT-OF-WAY.

COUNTY HIGHWAY 91 (60' WIDE)

STA. 247+00
LOGAN COUNTY ENGINEERS
F.B. 552, PG. 55

A SURVEY OF A 3.000 ACRE TRACT OUT OF THE
COMMISSIONERS OF LOGAN COUNTY, OHIO
ORIGINAL 164.35 ACRE TRACT
VOLUME T, PAGE 177
SECTION 7, TOWN 2, RANGE 15
HARRISON TOWNSHIP
LOGAN COUNTY, OHIO

SURVEYED BY:

Jeffrey I. Lee
JEFFREY I. LEE
PROFESSIONAL SURVEYOR 6359
APRIL 29, 2005



COPYRIGHT 2005 BY:
LEE SURVEYING & MAPPING CO., INC.
117 North Madriver Street
BELLEFONTAINE, OHIO 43311
(937) 593-7335

2 WORKING DAYS
BEFORE YOU DIG
CALL TOLL FREE **800-362-2764**
OHIO UTILITIES PROTECTION SERVICE

ADW D0405 1749045 L-1749045-3

INDEXED ON MAP
4/27/05

ORIGINAL STAMP IN GREEN

Rec 7-9-03 ok yes

Lee Surveying and Mapping Co., Inc.

Land Surveys • Topography • Subdivisions • Construction Layout

117 N. Madriver St.
Bellefontaine OH 43311



Phone: (937) 593-7335
Fax: (937) 593-7444

COMMISSIONERS OF LOGAN COUNTY, OHIO 148.856 ACRES

Lying in Section 7 and Section 13, Town 2, Range 15, Harrison Township, Logan County, Ohio.

Being part of the Commissioners of Logan County, Ohio, original 164.35 acre tract as deeded and described in Deed Volume T, Page 177, of the Logan County Records of Deeds and being more particularly described as follows:

Beginning at a 5/8 inch iron rod set on the southwest corner of Section 7 and on the southeast corner of Section 13.

THENCE, with the south line of Section 13 and the north line of the R. Herbert Hill, Trustee, 40.0 acre tract (O.R. 179, Pg. 482, Parcel II), N 85°-33'-02" W, a distance of 429.00 feet to a 5/8 inch iron rod set.

THENCE, with the east line of the Robert C. Roach original 168.9 acre tract (O.R. 246, Pg. 482, Tract 1) and the east line of the Wallace E. Roach original 168.9 acre tract (2.388 acres remaining, O.R. 142, Pg. 140, Tract I, N 4°-33'-36" E, a distance of 2878.42 feet to a harrow tooth found on the center-line of County Highway 91 (60 feet wide), passing a MAG nail set at 2837.42 feet.

THENCE, with the center-line of County Highway 91, the following three (3) courses:

- 1.) S 42°-27'-26" E, a distance of 56.97 feet to a 3/4 inch iron bolt found on center-line station 237+55.4 (Logan County Engineer's Field Book 552, Page 54);
- 2.) S 62°-18'-00" E, a distance of 945.05 feet to a 5/8 inch iron rod found on center-line station 247+00 (Logan County Engineer's Field Book 552, Page 55);
- 3.) S 63°-19'-39" E, a distance of 1769.20 feet to a railroad spike found, passing a 1 inch iron pipe found at 268.80 feet.

THENCE, with the west line of the C. Douglas Chamberlain 2.207 acre tract (O.R. 241, Pg. 377), S 12°-50'-13" E, a distance of 297.23 feet to a 5/8 inch iron rod found, passing a 5/8 inch iron rod found at 38.88 feet.

THENCE, with the west line of the said 2.207 acre tract and the west line of the Robert E. McPherson original 10.234 acre tract (O.R. 241, Pg. 382), a curve to the left having a central angle of 10°-02'-08", a radius of 5590.69 feet, an arc length of 979.23 feet and a chord bearing S 17°-51'-17" E, a distance of 977.98 feet to a 5/8 inch iron rod found;

THENCE, continuing with the west line of the said 10.234 acre tract, S 22°-52'-21" E, a distance of 188.27 feet to a 5/8 inch iron rod found.

THENCE, continuing with the west line of the said 10.234 acre tract (O.R. 241, Pg. 382), S 5°-24'-04"W, a distance of 435.72 feet to a 5/8 inch iron rod set.

THENCE, with the south line of Section 7 and the north line of the Kenneth L. Schroer 156.0 acre tract (O.R. 235, Pg. 223), N 85°-40'-28" W, a distance of 2662.91 feet to the point of beginning.

Containing 148.856 acres, of which 1.911 acres are within the highway right-of-way, 121.556 acres are in Section 7 and 27.300 acres are in Section 13.

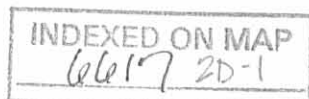
The basis for bearings is the center-line of County Highway 91, being N 62°-18'-00" W, and all other bearings are from angles and distances measured in a field survey by Lee Surveying and Mapping Co., Inc. on June 18, 2003.



ORIGINAL STAMP IN GREEN

Description prepared by:

Jeffrey I. Lee
Professional Surveyor 6359
June 25, 2003



RECID 7-8-03 SUM OK gus

Lee Surveying and Mapping Co., Inc.

Land Surveys • Topography • Subdivisions • Construction Layout

117 N. Madriver St.
Bellefontaine OH 43311



Phone: (937) 593-7335
Fax: (937) 593-7444

COMMISSIONERS OF LOGAN COUNTY, OHIO 12.900 ACRES

Lying in Section 7 and Section 13, Town 2, Range 15, Harrison Township, Logan County, Ohio.

Being part of the Commissioners of Logan County, Ohio, original 164.35 acre tract as deeded and described in Deed Volume T, Page 177, of the Logan County Records of Deeds and being more particularly described as follows:

Beginning at a 5/8 inch iron rod set on the southwest corner of Section 7 and on the southeast corner of Section 13.

THENCE, with the south line of Section 13 and the north line of the R. Herbert Hill, Trustee, 40.0 acre tract (O.R. 179, Pg. 482, Parcel II), N 85°-33'-02" W, a distance of 429.00 feet to a 5/8 inch iron rod set.

THENCE, with the east line of the Robert C. Roach original 168.9 acre tract (O.R. 246, Pg. 482, Tract 1) and the east line of the Wallace E. Roach original 168.9 acre tract, (2.388 acres remaining, O.R. 142, Pg. 140, Tract I), N 4°-33'-36" E, a distance of 2878.42 feet to a harrow tooth found at the on the center-line of County Highway 91 (60 feet wide) at the TRUE POINT OF BEGINNING, passing a MAG nail set at 2837.42 feet.

THENCE, with the east line of the Linda C. Parker 1.266 acre tract (O.R. 635, Pg. 902) and an east line of the Mac-O-Cheek, Inc. original 448.358 acre tract (O.R. 159, Pg. 97), N 4°-14'-30" E, a distance of 548.44 feet to a stone found, passing a 5/8 inch iron rod set at 41.22 feet.

THENCE, with a south line of the said 448.358 acre tract, S 85°-01'-22" E, a distance of 431.00 feet to a stone found;

THENCE, with the east line of Section 13 and a west line of the said 448.358 acre tract, S 4°-07'-13" W, a distance of 406.90 feet to a stone found;

THENCE, with a south line of the said 448.358 acre tract, S 63°-21'-15" E, a distance of 921.58 feet to a stone found;

THENCE, with a west line of the said 448.358 acre tract and the west line of the Frances L. Mills 0.918 acre tract (O.R. 380, Pg. 312), S 27°-00'-24" W, a distance of 328.17 feet to a 1 inch iron pipe found on the center-line of County Highway 91, passing a 5/8 inch iron rod set at 298.17 feet.

THENCE, with the center-line of County Highway 91, the following three (3) courses:

- 1.) N 63°-19'-39" W, a distance of 268.80 feet to a 5/8 inch iron rod found on center-line station 247+00 (Logan County Engineer's Field Book 552, Pg. 55);
- 2.) N 62°-18'-00" W, a distance of 945.05 feet to a 3/4 inch iron bolt found on center-line station 237+55.4 (Logan County Engineer's Field Book 552, Pg. 54);
- 3.) N 42°-27'-26" W, a distance of 56.97 feet to the point of beginning.

Containing 12.900 acres, of which 0.881 acre is within the highway right-of-way, 6.375 acres are in Section 7 and 6.525 acres are in Section 13.

The basis for bearings is the center-line of County Highway 91, being N 62°-18'-00" W, and all other bearings are from angles and distances measured in a field survey by Lee Surveying and Mapping Co., Inc. on June 18, 2003.

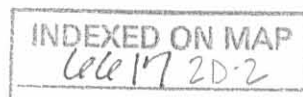


ORIGINAL STAMP IN GREEN

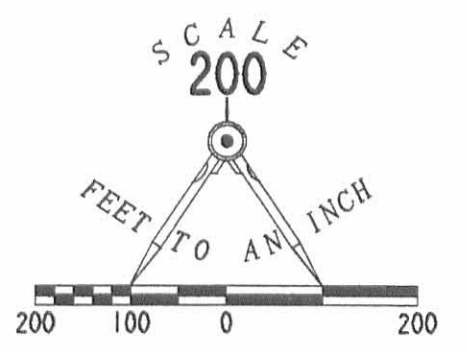
Description prepared by:

A handwritten signature in black ink, appearing to read 'Jeffrey I. Lee'.

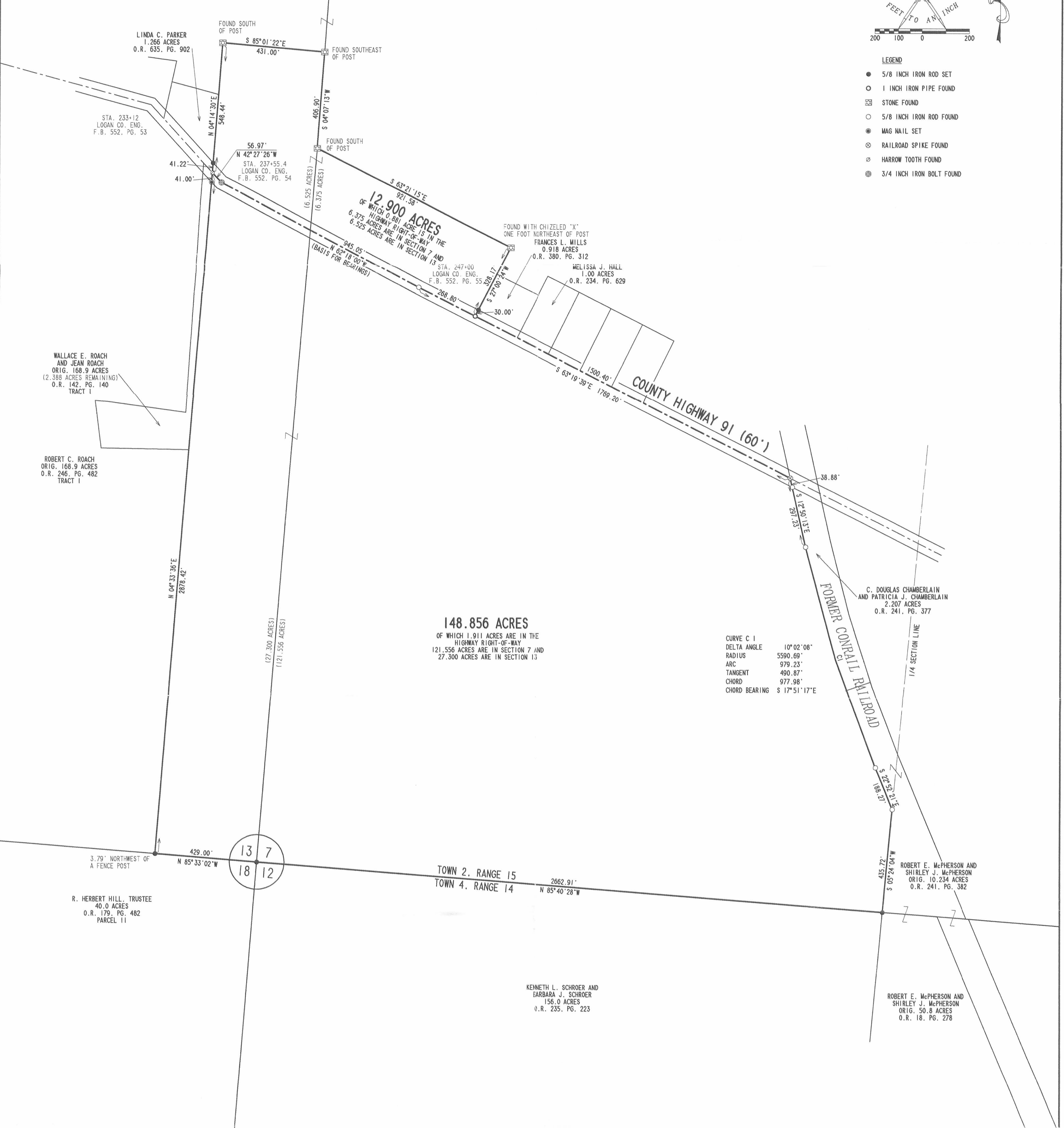
Jeffrey I. Lee
Professional Surveyor 6359
June 25, 2003



L-1749



- LEGEND**
- 5/8 INCH IRON ROD SET
 - 1 INCH IRON PIPE FOUND
 - ⊠ STONE FOUND
 - 5/8 INCH IRON ROD FOUND
 - MAG NAIL SET
 - ⊗ RAILROAD SPIKE FOUND
 - ⊕ HARROW TOOTH FOUND
 - ⊙ 3/4 INCH IRON BOLT FOUND



**SURVEY OF TWO TRACTS OUT OF THE
 COMMISSIONERS OF LOGAN COUNTY, OHIO
 ORIGINAL 164.35 ACRE TRACT
 DEED VOLUME T, PAGE 177
 SECTIONS 7 AND 13, TOWN 2, RANGE 15
 HARRISON TOWNSHIP
 LOGAN COUNTY, OHIO**



SURVEYED BY:

 JEFFREY L. LEE
 PROFESSIONAL SURVEYOR 6359
 JUNE 18, 2003

COPYRIGHT 2003 BY:
 LEE SURVEYING & MAPPING CO., INC.
 117 North Medivac Street
 BELLEFONTAINE, OHIO 43311
 (937) 593-7335
 D 411 MANHOMER L-1749-1

**2 WORKING DAYS
 BEFORE YOU DIG**
 CALL TOLL FREE 800-362-2764
 OHIO UTILITIES PROTECTION SERVICE

INDEXED ON MAP
 6617 25

County Home Survey
Section 7, T.2, R.15 B.M.R.S.
Harrison Township
Logan County, Ohio
1 June 2009

The following described real estate is situated in the West half of Section 7, T.2, R.15 B.M.R.S., Harrison Township, Logan County, Ohio. Said real estate being part of the Commissioners of Logan County, Ohio's 164.35 acre tract (Book T, pg. 177) and is more particularly described as follows:

Beginning for reference at a 1 inch square head iron bolt found on the centerline of Logan County Road No. 91. Said iron bolt being a point of intersection shown as station 237+39 in Logan County Engineer's Field Book No. 552, page 54.

Thence with the centerline of C.R. 91, S. $62^{\circ} - 02' - 26''$ E., 935.61 feet to a point. Said point being the true point of beginning for this description.

Thence N. $27^{\circ} - 37' - 40''$ E., 327.83 feet to a point on the South line of Watkins Farm's 221.179 acre tract (O.R. Vol. 809, pg. 274). The above described line passes through a Mag Nail found at 0.13 feet, a 5/8 inch diameter iron bar found at 30.09 feet and a 5/8 inch diameter iron bar found at 327.69 feet. The above described line being the East line of an unrecorded 3.00 acre tract the survey of which is on file in the Map Room of the Logan County Engineer's Office (Index No. 6617).

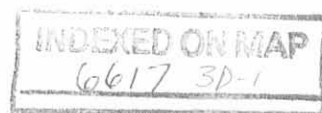
Thence with the South line of aforesaid Watkins Farm, S. $63^{\circ} - 25' - 23''$ E., 290.05 feet to a stone with chiseled "X" found on the North said of a wood corner post.

Thence with a West line of Watkins Farm's and the West line of Frances L. Mill's 0.918 acre tract (O.R. Vol. 380, pg. 312), S. $26^{\circ} - 58' - 09''$ W., 328.25 feet to a point on the centerline of C.R. 91. Said point being N. $26^{\circ} - 58' - 09''$ E., 0.09 feet from a 1/2 inch I.D. iron pipe found.

Thence with the centerline of C.R. 91, the following two courses:

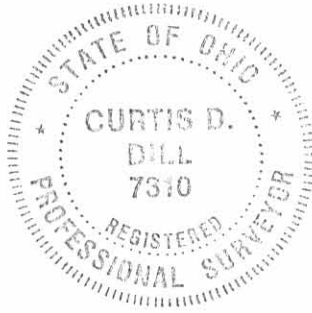
1. N. $63^{\circ} - 23' - 15''$ W., 281.73 feet to a PK Nail found (replaced with a R.R. spike). The above described line passes through a 3/4 inch diameter carriage bolt found at 268.88 feet.
2. N. $62^{\circ} - 02' - 26''$ W., 12.09 feet to the point of beginning.

The above described real estate encompasses 2.199 acres of which 0.202 acre is contained within the right of way of Logan County Road No. 91.



Basis of bearing being the centerline of Logan County Road No. 91 between station 233+12 and station 237+39 (S. 44° - 18' E.) as shown on page 53 of Logan County Engineer's Field Book No. 552.

This description was prepared by the Logan County Engineer's Office from an actual field survey performed on June 1, 2009.



Curtis D. Dill
Curtis D. Dill
Deputy Surveyor
Logan County Engineer's Office
Registered Surveyor No. 7310

INDEXED ON MAP
6617 3D-2

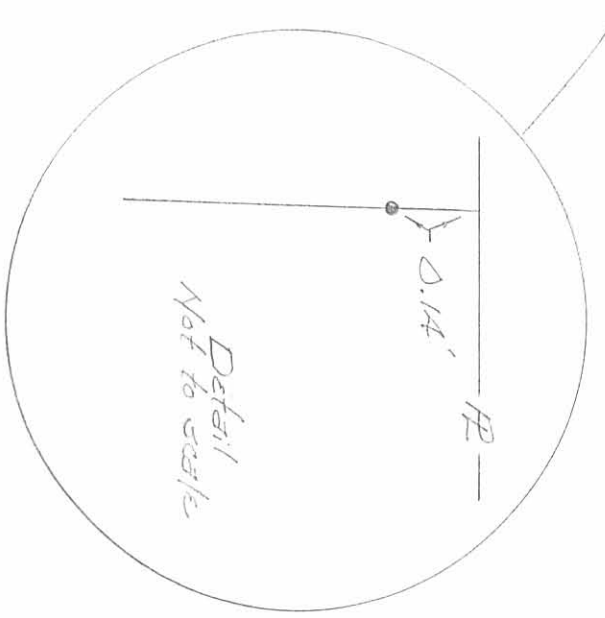
PAR. NO. 09-076-00-00-058.007



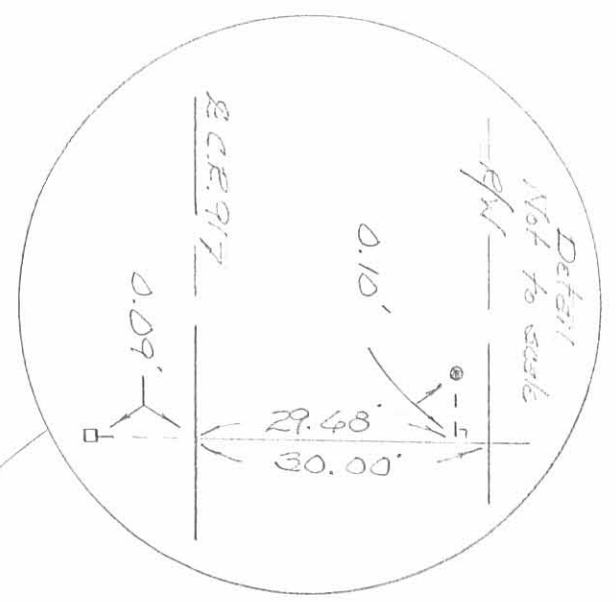
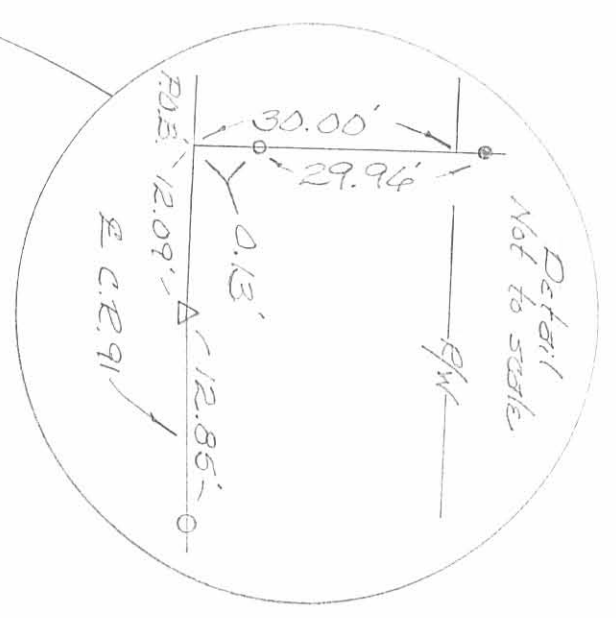
Commissioners of Logan
County, Ohio
164.35 Ac.
BL. T, pgs. 177-178
PAR. NO. 09-076-00-00-005

S 43° 25' 23" E. 290.05'

2.199 Ac.



1.997 Ac.



PAR. NO. 09-076-00-00-004

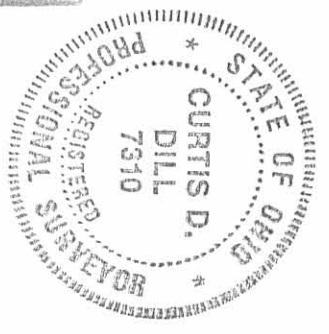
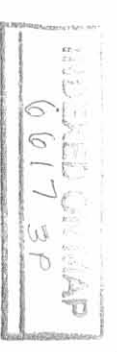
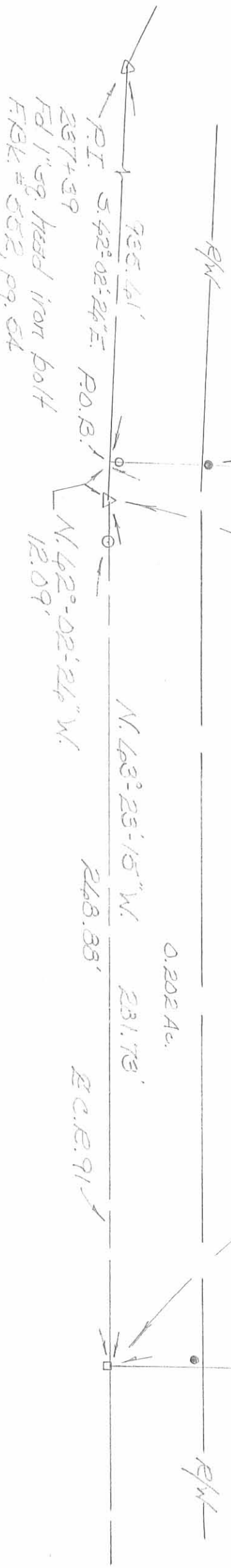
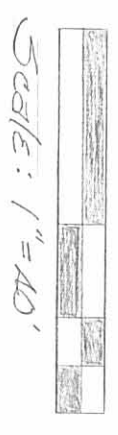
Frances L. Mills
0.918 Ac.
O.E.V. 61.380, pg. 51E

Watkins Farm
221.179 Ac.
O.E.V. 61.809, pg. 27A

A survey of a 2.199 acre tract
out of the Commissioners of
Logan County, Ohio original 164.35
acre tract

Section 7, T.2, R. 15
Harrison Township
Logan County, Ohio
June 25, 1859

- Legend
- = Fd. 5/8" dia. iron bar
 - = Fd. map nail
 - = Fd. 3/4" dia. carriage bolt
 - △ = Fd. PK nail - replaced w/ E.B. Spike
 - = Fd. 1/2" I.D. pipe
 - = Fd. stone w/ "X"



Basis of bearing being the centerline
of Logan County Road No. 91 between station 233+12
and station 237+39 (S. 44° 18' E.) as shown on page 53
of Logan County Engineers Field Book No. 552.

This plat was prepared by the
Logan County Engineers Office from
an actual field survey performed on
June 1, 2009.

Curtis D. Dill

Curtis D. Dill
Deputy Surveyor
Logan Co. Engineers Office
Registered Surveyor No. 7310

EASEMENT FOR SANITARY SEWER PURPOSES

Section 7, T.2, R. 15 B.M.R.S.
Harrison Township
Logan County, Ohio
1 June 2009

Situated in Section 7, T.2, R.15 B.M.R.S., Harrison Township, Logan County, Ohio. The following described easement for sanitary sewer purposes being part of the Commissioners of Logan County, Ohio's 164.35 acre tract recorded in Book T, page 177 in the Logan County Recorders Office. Said easement being a 20.00 foot wide strip of real estate the centerline of which is more particularly described as follows:

Beginning for reference at a 1 inch square head iron bolt found on the centerline of Logan County Road No. 91. Said bolt being a point of intersection shown as station 237+39 in Logan County Engineer's Field Book No. 552, page 54.

Thence with the centerline of Logan County Road No. 91, the following two courses:

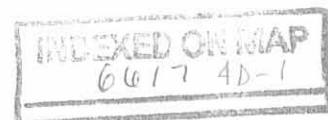
1. S. $62^{\circ} - 02' - 26''$ E., 947.69 feet to a PK Nail found (replaced with a R.R. spike).
2. S. $63^{\circ} - 23' - 15''$ E., 135.53 feet to a point. The above described line passes through a $\frac{3}{4}$ inch diameter carriage bolt found at 12.85 feet.

Thence perpendicular to the centerline of C.R. 91, S. $26^{\circ} - 36' - 45''$ W., 30.00 feet to a point on the South right of way line of C.R. 91. Said point being the true point of beginning for this easement description.

Thence onto the Commissioners of Logan County, Ohio's 164.35 acre tract the following two courses:

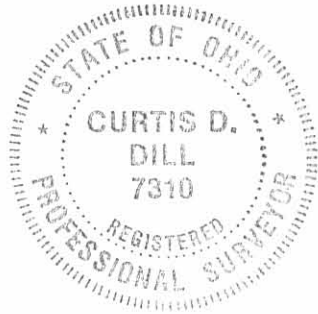
1. S. $29^{\circ} - 36' - 22''$ W., 101.59 feet to a 4 inch diameter PVC cleanout pipe found. The above described line passes through a 4 inch diameter PVC cleanout pipe found at 3.64 feet.
2. S. $21^{\circ} - 52' - 08''$ W., 100.00 feet to a point and there terminate. The above described line passes through a manhole found at 90.61 feet.

The above described easement for sanitary sewer purposes encompasses 0.093 acre more or less.



Basis of bearing being the centerline of Logan County Road No. 91 between station 233+12 and station 237+39 (S. 44° – 18'E.) as shown on page 53 of Logan County Engineer's Field Book No. 552.

This easement description was prepared by the Logan County Engineer's Office from an actual field survey performed on June 1, 2009.



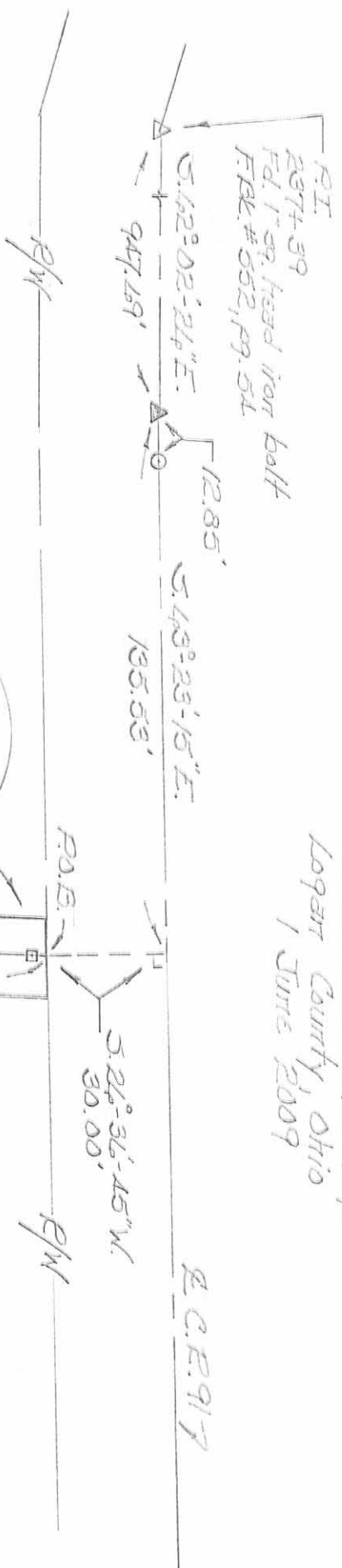
Curtis D. Dill

Curtis D. Dill
Deputy Surveyor
Logan County Engineer's Office
Registered Surveyor No. 7310

INDEXED ON MAP
6617 AB-Z

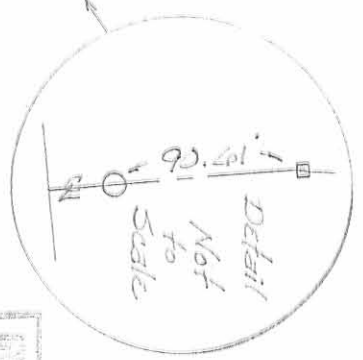
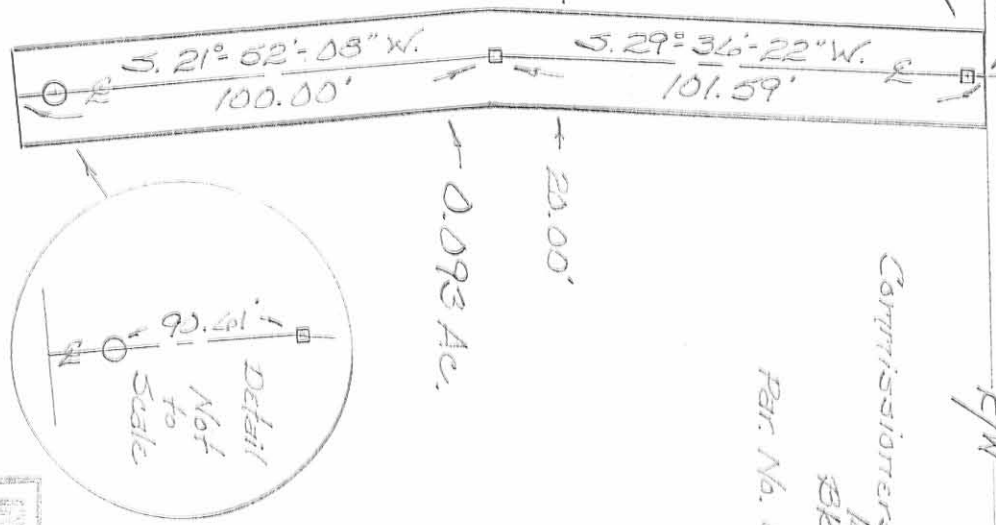
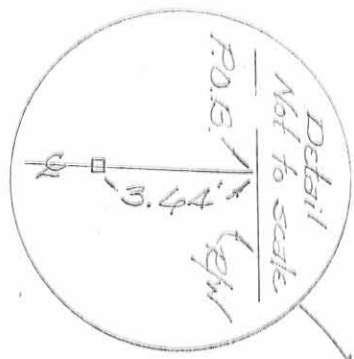
Easement for Sanitary Sewer Purposes

Section 7, T.2, R.15
Harrison Township
Logan County, Ohio
1 June 2009



Legend

- ▲ = Fd. PK nail - replaced w/ P.E. Spike
- = Fd. 3/4" dia. carriage bolt
- = Fd. 4" dia. PVC cleatout
- = Marked Found



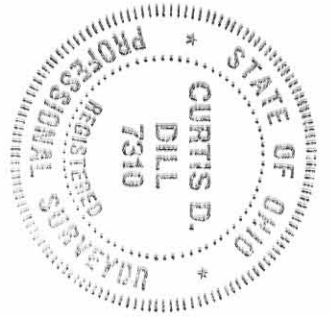
Commissioners of Logan County, Ohio
144.35 Ac.
Bk. T, pg. 177
Par. No. 09-074-00-00-005

Basis of bearing being the centerline of Logan County Road No. 91 between station 232+12 and station 237+39 (S. 44° 18' E.) as shown on page 53 of Logan County Engineer's Field Book No. 552.

This plat was prepared by the Logan County Engineers Office from an actual field survey performed on June 1, 2009.

INDEXED ON MAP
0617 AP

Curtis D. Dill
Curtis D. Dill
Deputy Surveyor
Logan Co. Engineers Office,
Registered Surveyor No. 7310



**County Home Survey
Section 7, T.2, R.15, B.M.R.S.
Section 13, T.2, R.15, B.M.R.S
Harrison Township
Logan County, Ohio
11 February 2010**

The following described real estate is situated in the West half of Section 7, T.2, R.15, B.M.R.S. and the East half of fractional Section 13, T.2, R.15, B.M.R.S., Harrison Township, Logan County, Ohio. Said real estate being part of the Commissioners of Logan County, Ohio's original 164.35 acre tract (Book T, page 177) and is more particularly described as follows:

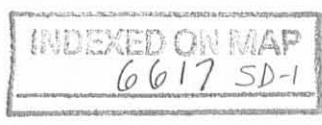
Beginning for reference at a one inch square head iron bolt found on the centerline of Logan County Road No. 91. Said iron bolt found is shown as being P.I. station 233+12 in Logan County Engineer's Field Book No. 552, page 53.

Thence with the centerline of C.R. 91, S. 44° - 18' - 00" E., (basis), 384.96 feet to a railroad spike set at the S.E. corner of Robert Bryant et al's 1.266 acre tract (O.R. Vol. 809, pg. 462). Said railroad spike set being the true point of beginning for this survey.

Thence with Bryant's East line and the South line of Watkins Farm's 221.179 acre tract (O.R. Vol. 809, pg. 274 Tract 1), N. 4° - 24' - 45" E., 549.86 feet to the center of a 16 inch octagonal concrete post found. The above described line passes through a 5/8 inch diameter capped iron bar set on the North right of way line of C.R. 91 at 39.93 feet.

Thence continuing with the South line of Watkin's Farm, the following three courses:

1. S. 84° - 56' - 15" E., 431.20 feet to a stone found. The center of a ten inch square concrete post bears N. 27° W., 1.45 feet.
2. S. 4° - 05' - 02" W., 406.87 feet to a stone found. The above described line passes through the center of a ten inch square concrete post at 405.3 feet.
3. Thence S. 63° - 25' - 23" E., 631.67 feet to a point at the N.W. corner of Thomas A. Mann's 2.199 acre tract (O.R. Vol. 978, pg. 5). The above described line passes through a 5/8 inch diameter capped (LEE) iron bar found at 159.15 feet.



Thence with the West line of aforesaid Mann's 2.199 acre tract, S. 27° - 37' - 40" W., 327.83 feet to a point on the centerline of C.R. 91. The above described line passes through a 5/8 inch diameter capped (LEE) iron bar found at 0.14 feet, a 5/8 inch diameter capped (LEE) iron bar found at 297.74 feet, and a Mag Nail found at 327.70 feet.

Thence with the centerline of C.R. 91, N. 62° - 02' - 26" W., 935.61 feet to a one inch square head iron bolt found. Said iron bolt found is shown as being P.I. station 237+39 in Logan County Engineer's Field Book No. 552, page 54.

Thence continuing with the centerline of C.R. 91, N. 44° - 18' - 00" W., 42.00 feet to the point of beginning.

The above described tract encompasses 10.671 acres of which 0.679 acre is contained within the right-of-way of Logan County Road No. 91. Section 13 encompasses 6.508 acres and section 7 contains 4.163 acres.

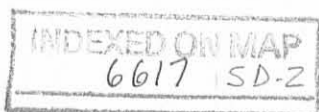
Caps placed on iron bars set are stamped "Logan County Engineer."

Basis of bearing being the centerline of Logan County Road No. 91 between station 233+12 and station 237+39 (S. 44° - 18' - 00" E.) as shown on page 53 of Logan County Engineer's Field Book No. 552.

This description represents a New Survey completed by the Logan County Engineer's Office from an actual field survey performed on February 11, 2010.

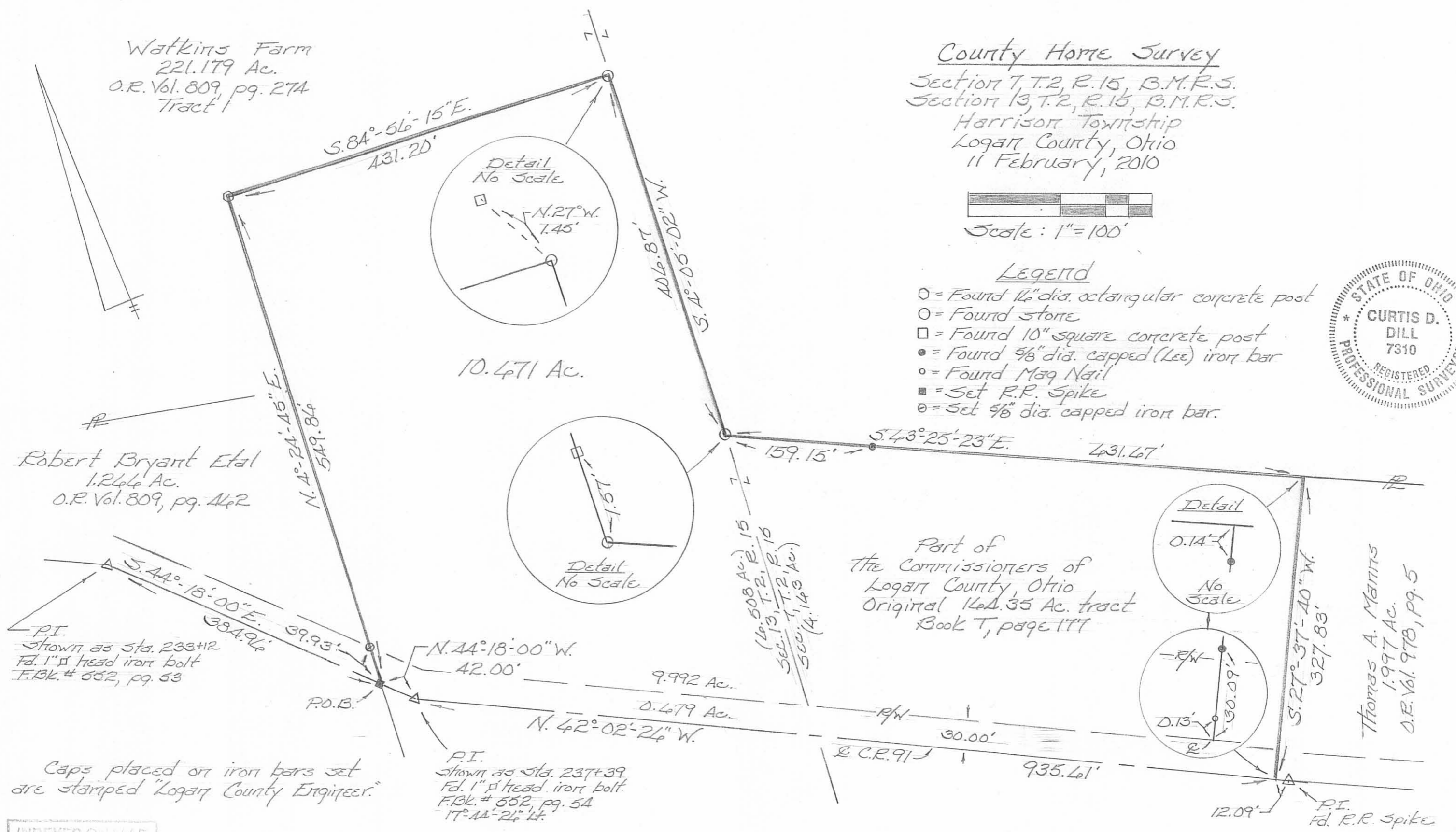


Curtis D. Dill
Curtis D. Dill
Deputy Surveyor
Logan County Engineer's Office
Registered Surveyor No. 7310

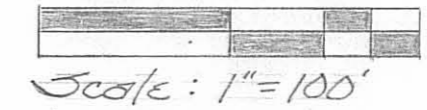


REV'D 2-23-10 SMD/OC

Watkins Farm
221.179 Ac.
O.R. Vol. 809, pg. 274
Tract 1



County Home Survey
Section 7, T.2, R.15, B.M.R.S.
Section 13, T.2, R.15, B.M.R.S.
Harrison Township
Logan County, Ohio
11 February, 2010



- Legend
- = Found 1 1/2" dia. octangular concrete post
 - = Found stone
 - = Found 10" square concrete post
 - = Found 5/8" dia. capped (Lee) iron bar
 - = Found Mag Nail
 - = Set R.R. Spike
 - = Set 5/8" dia. capped iron bar.



Robert Bryant Etal
1.266 Ac.
O.R. Vol. 809, pg. 462

P.I.
Shown as Sta. 233+12
Fd. 1" head iron bolt
F.Bk. # 552, pg. 53

Caps placed on iron bars set
are stamped "Logan County Engineer."

INDEXED ON MAP
6617 5P

This plat represents a new survey
completed by the Logan County Engineers
Office from an actual field survey
performed on February 11, 2010.

P.I.
Shown as Sta. 237+39
Fd. 1" head iron bolt
F.Bk. # 552, pg. 54
17°-44'-24" W.

Basis of bearing being the centerline of
Logan County Road No. 91 between station 233+12
and station 237+39 (S.44°-18'-00" E.) as shown
on page 53 of Logan County Engineers Field
Book No. 552.

Part of
the Commissioners of
Logan County, Ohio
Original 144.35 Ac. tract
Book T, page 177

Thomas A. Mannis
1.997 Ac.
O.R. Vol. 978, pg. 5

Curtis D. Dill
Curtis D. Dill
Deputy Surveyor
Logan Co. Engineers Office
Registered Surveyor No. 7310

LEGEND
 ○ 5/8 INCH IRON ROD FOUND

SCALE
 50
 FEET TO AN INCH

2 WORKING DAYS
BEFORE YOU DIG
 CALL TOLL FREE 800-362-2764
 ONE OF THE BEST PROJECTS OF SERVICE.

A DEDICATION PLAT OF UTILITY EASEMENTS AND THE UTILITIES LOCATED THERE IN, THROUGH THE COMMISSIONERS OF LOGAN COUNTY, OHIO ORIGINAL 164.35 ACRE TRACT VOLUME T, PAGE 177 SECTION 7, TOWN 2, RANGE 15 HARRISON TOWNSHIP LOGAN COUNTY, OHIO

LOGAN COUNTY COMMISSIONERS
 Anthony E. Coe 6/9/11 DATE
 John Bayless 6-9-2011 DATE
 Don A. Wick 6-9-2011 DATE

MAYOR OF BELLEFONTAINE
 John M. Bunnor 7-28-2011 DATE

PRESIDENT, CITY COUNCIL
 Richard J. Vicario 11-11-2011 DATE

UTILITY COMMISSION CHAIR PERSON
 David J. Haw 8-9-2011 DATE

PLAT PRE-APPROVED
 Suzanne M. Yosty 8-7-2012 DATE

PLAT CHECKED
 Suzanne M. Yosty 8-7-2012 DATE

CITY ORDINANCE NUMBER
 11-28

TRANSFERRED THIS 7th DAY OF August, 2012

AUDITOR, LOGAN COUNTY, OHIO
 Michael E. Godwin

RECEIVED FOR RECORD AT 9:48 O'CLOCK A M.

THIS 8th DAY OF August, 2012

RECORDER, LOGAN COUNTY, OHIO
 Linda Horan

RECORDED IN PLAT CABINET B SLIDE 128B

UTILITY EASEMENT A

| LINE | BEARING | DISTANCE |
|------|---------------|----------|
| L17 | S 26°41'40" W | 33.33' |
| L18 | S 39°57'30" W | 282.25' |
| L19 | N 77°21'34" W | 317.11' |
| L20 | S 80°56'50" W | 175.58' |
| L21 | N 90°00'00" W | 200.77' |
| L22 | N 00°00'00" E | 20.00' |
| L23 | N 90°00'00" E | 20.00' |
| L24 | N 00°00'00" E | 120.16' |
| L25 | S 89°50'58" E | 20.00' |
| L26 | S 00°00'00" E | 120.11' |
| L27 | N 90°00'00" E | 159.19' |
| L28 | N 80°56'53" E | 40.55' |
| L29 | N 00°00'00" E | 124.52' |
| L30 | N 90°00'00" E | 35.66' |
| L31 | N 53°28'34" E | 15.31' |
| L32 | S 36°32'52" E | 9.99' |
| L33 | S 53°27'08" W | 18.61' |
| L34 | N 90°00'00" W | 18.96' |
| L35 | S 00°00'00" E | 111.34' |
| L36 | N 80°56'53" E | 93.76' |
| L37 | N 12°38'26" E | 8.60' |
| L38 | S 77°21'34" E | 330.38' |
| L39 | N 39°57'30" E | 267.75' |
| L40 | N 26°41'40" E | 31.00' |
| L41 | S 63°19'39" E | 20.00' |

UTILITY EASEMENT C

| LINE | BEARING | DISTANCE |
|------|---------------|----------|
| L1 | S 26°38'49" W | 28.96' |
| L2 | S 08°04'37" E | 103.36' |
| L3 | S 19°19'37" E | 91.60' |
| L4 | S 19°19'37" E | 251.23' |
| L5 | S 03°08'50" W | 130.61' |
| L6 | S 48°10'23" W | 108.14' |
| L6A | S 81°55'23" W | 168.74' |
| L7 | N 68°05'04" W | 33.69' |
| L8 | N 20°25'38" W | 8.06' |
| L9 | N 24°56'40" E | 265.73' |
| L10 | N 28°21'26" E | 26.01' |

UTILITY EASEMENT B

| LINE | BEARING | DISTANCE |
|------|---------------|----------|
| L11 | S 70°40'23" W | 20.68' |
| L12 | S 87°01'20" W | 258.55' |
| L13 | S 77°08'15" W | 67.40' |
| L14 | N 83°58'04" W | 200.02' |
| L15 | N 61°38'34" W | 156.52' |
| L16 | S 28°21'26" W | 57.41' |

| CURVE | DELTA ANGLE | RADIUS | ARC LENGTH | TANGENT | CHORD BEARING | CHORD LENGTH |
|-------|-------------|----------|------------|---------|---------------|--------------|
| C1 | 23°41'11" | 1078.22' | 445.74' | 226.10' | N 80°49'24" W | 442.58' |

UTILITY EASEMENT A
 LYING IN SECTION 7, TOWN 2, RANGE 15, HARRISON TOWNSHIP, LOGAN COUNTY, OHIO.

BEING A UTILITY EASEMENT THROUGH THE COMMISSIONERS OF LOGAN COUNTY, OHIO ORIGINAL 164.35 ACRE TRACT AS DEEDED AND DESCRIBED IN VOLUME T, PAGE 177 OF THE LOGAN COUNTY RECORDS OF DEEDS AND BEING MORE PARTICULARLY DESCRIBED AS FOLLOWS:

COMMENCING AT A 5/8 INCH IRON ROD FOUND AT STATION 247+00 (LOGAN COUNTY ENGINEER'S FIELD BOOK 552, PAGE 55) ON THE CENTER-LINE OF COUNTY HIGHWAY 91 (60 FEET WIDE).

THENCE, WITH THE CENTER-LINE OF COUNTY HIGHWAY 91, S 63°19'-39"E, A DISTANCE OF 1769.20 FEET TO A 5/8 INCH IRON ROD FOUND.

THENCE, WITH THE WEST LINE OF THE C. DOUGLAS CHAMBERLAIN AND PATRICIA J. CHAMBERLAIN 2.207 ACRE TRACT (O.R. 241, PG. 377), S 12°-50'-13"E, A DISTANCE OF 38.88 FEET TO A 5/8 INCH IRON ROD FOUND.

THENCE, WITH THE SOUTH RIGHT-OF-WAY OF COUNTY HIGHWAY 91, N 63°-19'-39"W, A DISTANCE OF 153.89 FEET TO A POINT AT THE TRUE POINT OF BEGINNING.

THENCE, S 26°-41'-40"W, A DISTANCE OF 33.33 FEET TO A POINT.

THENCE, S 39°-57'-30"W, A DISTANCE OF 282.25 FEET TO A POINT.

THENCE, N 77°-21'-34"W, A DISTANCE OF 317.11 FEET TO A POINT.

THENCE, S 80°-56'-50"W, A DISTANCE OF 175.58 FEET TO A POINT.

THENCE, N 90°-00'-00"W, A DISTANCE OF 200.77 FEET TO A POINT.

THENCE, N 00°-00'-00"E, A DISTANCE OF 20.00 FEET TO A POINT.

THENCE, N 90°-00'-00"E, A DISTANCE OF 20.00 FEET TO A POINT.

THENCE, N 00°-00'-00"E, A DISTANCE OF 120.16 FEET TO A POINT.

THENCE, S 89°-50'-58"E, A DISTANCE OF 20.00 FEET TO A POINT.

THENCE, S 00°-00'-00"E, A DISTANCE OF 120.11 FEET TO A POINT.

THENCE, N 90°-00'-00"E, A DISTANCE OF 159.19 FEET TO A POINT.

THENCE, N 80°-56'-53"E, A DISTANCE OF 40.55 FEET TO A POINT.

THENCE, N 00°-00'-00"E, A DISTANCE OF 124.52 FEET TO A POINT.

THENCE, N 90°-00'-00"E, A DISTANCE OF 35.66 FEET TO A POINT.

THENCE, N 53°-28'-34"E, A DISTANCE OF 15.31 FEET TO A POINT.

THENCE, S 36°-32'-52"E, A DISTANCE OF 9.99 FEET TO A POINT.

THENCE, S 53°-27'-08"W, A DISTANCE OF 18.61 FEET TO A POINT.

THENCE, N 90°-00'-00"W, A DISTANCE OF 18.96 FEET TO A POINT.

THENCE, S 00°-00'-00"E, A DISTANCE OF 111.34 FEET TO A POINT.

THENCE, N 80°-56'-53"E, A DISTANCE OF 93.76 FEET TO A POINT.

THENCE, N 12°-38'-26"E, A DISTANCE OF 8.60 FEET TO A POINT.

THENCE, S 77°-21'-34"E, A DISTANCE OF 330.38 FEET TO A POINT.

THENCE, N 39°-57'-30"E, A DISTANCE OF 267.75 FEET TO A POINT.

THENCE, N 26°-41'-40"E, A DISTANCE OF 31.00 FEET TO A POINT.

THENCE, WITH THE CENTER-LINE OF COUNTY HIGHWAY 91, S 63°-19'-39"E, A DISTANCE OF 1769.20 FEET TO THE POINT OF BEGINNING.

THE BASIS FOR BEARINGS IS THE SOUTH RIGHT-OF-WAY OF COUNTY HIGHWAY 91, BEING N 61°-19'-39"W, AND ALL OTHER BEARINGS ARE FROM ANGLES AND DISTANCES MEASURED IN A FIELD SURVEY BY LEE SURVEYING AND MAPPING CO., INC. ON MAY 18, 2011.

DESCRIPTION PREPARED BY WILLIAM K. BRUCE, PROFESSIONAL SURVEYOR 7437 ON MAY 18, 2011.

UTILITY EASEMENT B

LYING IN SECTION 7, TOWN 2, RANGE 15, HARRISON TOWNSHIP, LOGAN COUNTY, OHIO.

BEING A 20' WIDE UTILITY EASEMENT THROUGH THE COMMISSIONERS OF LOGAN COUNTY, OHIO ORIGINAL 164.35 ACRE TRACT AS DEEDED AND DESCRIBED IN VOLUME T, PAGE 177 OF THE LOGAN COUNTY RECORDS OF DEEDS AND BEING MORE PARTICULARLY DESCRIBED AS FOLLOWS:

COMMENCING AT A 5/8 INCH IRON ROD FOUND AT STATION 247+00 (LOGAN COUNTY ENGINEER'S FIELD BOOK 552, PAGE 55) ON THE CENTER-LINE OF COUNTY HIGHWAY 91 (60 FEET WIDE).

THENCE, WITH THE CENTER-LINE OF COUNTY HIGHWAY 91, S 63°-19'-39"E, A DISTANCE OF 1769.20 FEET TO A 5/8 INCH IRON ROD FOUND.

THENCE, WITH THE WEST LINE OF THE C. DOUGLAS CHAMBERLAIN AND PATRICIA J. CHAMBERLAIN 2.207 ACRE TRACT (O.R. 241, PG. 377), S 12°-50'-13"E, A DISTANCE OF 38.88 FEET TO A 5/8 INCH IRON ROD FOUND.

THENCE, WITH THE SOUTH RIGHT-OF-WAY OF COUNTY HIGHWAY 91, N 63°-19'-39"W, DISTANCE OF 74.21 FEET TO A POINT.

THENCE, S 26°-38'-49"W, A DISTANCE OF 28.96 FEET TO A POINT.

THENCE, S 08°-04'-37"E, A DISTANCE OF 103.36 FEET TO A POINT.

THENCE, S 19°-19'-37"E, A DISTANCE OF 91.60 FEET TO A POINT AT THE TRUE POINT OF BEGINNING.

THENCE, WITH THE CENTER-LINE OF THIS 20 FEET WIDE UTILITY EASEMENT THE FOLLOWING 6 COURSES:

S 70°-40'-23"W, A DISTANCE OF 20.68 FEET TO A POINT.

S 87°-01'-20"W, A DISTANCE OF 258.55 FEET TO A POINT.

S 77°-08'-15"W, A DISTANCE OF 67.40 FEET TO A POINT.

N 83°-58'-04"W, A DISTANCE OF 200.02 FEET TO A POINT.

UTILITY EASEMENT B (CONTINUED)

N 61°-38'-34"E, A DISTANCE OF 156.52 FEET TO A POINT.

S 28°-21'-26"W, A DISTANCE OF 57.41 FEET TO A POINT AT THE TERMINUS OF THIS EASEMENT.

THE SIDELINES OF SAID EASEMENT TO BE SHORTENED OR PROLONGED TO MEET AT ANGLE POINT INTERSECTIONS.

THE BASIS FOR BEARINGS IS THE CENTER-LINE OF COUNTY HIGHWAY 91, BEING N 61°-19'-39"W, AND ALL OTHER BEARINGS ARE FROM ANGLES AND DISTANCES MEASURED IN A FIELD SURVEY BY LEE SURVEYING AND MAPPING CO., INC. ON MAY 18, 2011.

DESCRIPTION PREPARED BY WILLIAM K. BRUCE, PROFESSIONAL SURVEYOR 7437 ON MAY 18, 2011.

UTILITY EASEMENT C

LYING IN SECTION 7, TOWN 2, RANGE 15, HARRISON TOWNSHIP, LOGAN COUNTY, OHIO.

BEING A 20' WIDE UTILITY EASEMENT THROUGH THE COMMISSIONERS OF LOGAN COUNTY, OHIO ORIGINAL 164.35 ACRE TRACT AS DEEDED AND DESCRIBED IN VOLUME T, PAGE 177 OF THE LOGAN COUNTY RECORDS OF DEEDS AND BEING MORE PARTICULARLY DESCRIBED AS FOLLOWS:

COMMENCING AT A 5/8 INCH IRON ROD FOUND AT STATION 247+00 (LOGAN COUNTY ENGINEER'S FIELD BOOK 552, PAGE 55) ON THE CENTER-LINE OF COUNTY HIGHWAY 91 (60 FEET WIDE).

THENCE, WITH THE CENTER-LINE OF COUNTY HIGHWAY 91, S 63°-19'-39"E, A DISTANCE OF 1769.20 FEET TO A 5/8 INCH IRON ROD FOUND.

THENCE, WITH THE WEST LINE OF THE C. DOUGLAS CHAMBERLAIN AND PATRICIA J. CHAMBERLAIN 2.207 ACRE TRACT (O.R. 241, PG. 377), S 12°-50'-13"E, A DISTANCE OF 38.88 FEET TO A 5/8 INCH IRON ROD FOUND.

THENCE, WITH THE SOUTH RIGHT-OF-WAY OF COUNTY HIGHWAY 91, N 63°-19'-39"W, DISTANCE OF 74.21 FEET TO A POINT AT THE TRUE POINT OF BEGINNING.

THENCE, WITH THE CENTER-LINE OF THIS 20 FEET WIDE EASEMENT THE FOLLOWING 11 COURSES:

UTILITY EASEMENT C (CONTINUED)

S 26°-38'-49"W, A DISTANCE OF 28.96 FEET TO A POINT.

S 08°-04'-37"E, A DISTANCE OF 103.36 FEET TO A POINT.

S 19°-19'-37"E, A DISTANCE OF 251.23 FEET TO A POINT.

S 03°-08'-50"W, A DISTANCE OF 130.61 FEET TO A POINT.

S 48°-10'-23"W, A DISTANCE OF 108.14 FEET TO A POINT.

S 81°-55'-23"W, A DISTANCE OF 168.74 FEET TO A POINT.

WITH A CURVE TO THE LEFT WITH A RADIUS OF 1078.22 FEET, A CENTRAL ANGLE OF 23°-41'-11", AN ARC LENGTH OF 445.74 FEET, A CHORD BEARING N 80°-49'-24"W AT A DISTANCE OF 442.58 FEET TO A POINT.

N 68°-05'-04"W, A DISTANCE OF 33.69 FEET TO A POINT.

N 20°-25'-38"W, A DISTANCE OF 8.06 FEET TO A POINT.

N 24°-56'-40"E, A DISTANCE OF 265.73 FEET TO A POINT.

N 28°-21'-26"E, A DISTANCE OF 26.01 FEET TO A POINT AT THE TERMINUS OF THIS EASEMENT.

THE SIDELINES OF SAID EASEMENT TO BE SHORTENED OR PROLONGED TO MEET AT ANGLE POINT INTERSECTIONS.

THE BASIS FOR BEARINGS IS THE CENTER-LINE OF COUNTY HIGHWAY 91, BEING N 61°-19'-39"W, AND ALL OTHER BEARINGS ARE FROM ANGLES AND DISTANCES MEASURED IN A FIELD SURVEY BY LEE SURVEYING AND MAPPING CO., INC. ON MAY 18, 2011.

DESCRIPTION PREPARED BY WILLIAM K. BRUCE, PROFESSIONAL SURVEYOR 7437 ON MAY 18, 2011.

STATE OF OHIO
 WILLIAM K. BRUCE
 7437
 PROFESSIONAL SURVEYOR

PREPARED BY:
 William K. Bruce
 WILLIAM K. BRUCE
 PROFESSIONAL SURVEYOR 7437
 MAY 18, 2011

COPYRIGHT 2011 BY:
 LEE SURVEYING & MAPPING CO., INC.
 117 North Newfry Street
 BELLEFONTAINE, OHIO 43311
 (937) 593-7335
 surveys@lsm-inc.com
 AOW 00511 17490511 L-17490511-1