

McKinnon Description
Tract One

The following described real estate situated in the Township of Harrison, County of Logan, State of Ohio and being a part of Section 1 and 7, Town 2, Range 15 and being more particularly described as follows:

Beginning in the centerline of C. H. No. 130 (Bellefontaine and Huntsville Pike) at the northwest corner to Robert Glen Herren, Jr.'s present 44.93 Acre tract;

Thence with the centerline of C. H. No. 130, N. 10° 08' W. 724.52 feet to a point in the center of Bridge No. 130-3.97 and Flat Branch Creek;

Thence with the center of Flat Branch Creek the following seventeen courses and distances, N. 50° 38' E. 236.21 feet, N. 71° 01' E. 199.68 feet, N. 75° 12' E. 93.69 feet, S. 86° 49' E. 8.00 feet, N. 67° 56' E. 144.02 feet, N. 82° 31' E. 301.36 feet, N. 74° 46' E. 115.64 feet, N. 51° 46' E. 63.39 feet, N. 87° 16' E. 159.90 feet, N. 67° 16' E. 122.23 feet, N. 75° 01' E. 132.14 feet, N. 61° 46' E. 227.23 feet, N. 80° 31' E. 142.04 feet, S. 57° 44' E. 445.94 feet, S. 27° 14' E. 103.63 feet, S. 7° 16' W. 85.82 feet and S. 16° 16' W. 115.54 feet to a point at the south line of Forris D. McKinnon's present 15.60 Acre tract;

Thence with Forris D. McKinnon's south line, S. 84° 20' E. 360.41 feet to a monument, 545.00 feet right of Station 689 + 00 of the centerline survey of U. S. R. No. 33 as shown on Plan L-48, LOG-33-10.85, Logan County Engineers Office;

Thence with the right of way of U. S. R. No. 33 the following five courses and distances, S. 21° 24' E. 767.96 feet, N. 83° 09' E. 374.00 feet, S. 38° 19' E. 646.82 feet, S. 30° 50' E. 496.49 feet and S. 31° 40' E. 848.20 feet to a post in the north line of Burton Heath's present 2.80 Acre tract;

Thence with Burton Heath's and George Franklin Wonder's north line, N. 84° 38' W. 1,366.42 feet to a stone at the southwest corner of the northwest quarter of Section 1 and a northwest corner to Wonder's present 79.21 Acre tract;

Thence with the north line of George Franklin Wonders present 14.90 Acre tract in Section 7, N. 86° 05' W. 473.44 feet to a post in the east line of Mary E. King's present 39.32 Acre tract;

Thence with Mary E. King's east line, N. 5° 00' E. 884.68 feet to a stone at the northeast corner to William F. McKinnon's present 1.404 Acre tract;

Thence with the north line of said 1.404 Acre tract, S. 80° 30' W. 39.95 feet to a post at the southeast corner to Robert Glen Herren, Jr.'s present 44.93 Acre tract;

Thence with Herren's east line, N. 6° 45' W. 637.96 feet to a post at Herren's northeast corner;

INDEXED ON MAP

6072 10-1

(2)

Thence with Herren's north line, S. $87^{\circ} 10'$ W. 2,304.71 feet to the place of beginning, containing 104.175 Acres, more or less.

There being 76.239 Acres in Section 7 T.2 R.15 and 27.936 Acres in Section 1 T. 2 R.15, excepting 3.134 Acres in the 80 foot right of way of the old C. & L. E. RR. (now belonging to the State of Ohio).

The total area after exceptions being 24.802 Acres in Section 1 and 76.239 Acres in Section 7, making a total of 101.041 Acres, more or less.

I hereby certify that this is a true and accurate description as prepared by me on August 7, 1977.

Daniel E. Gilbert

Daniel E. Gilbert, P.S.
Reg. Sur. No. 5402
1041 N. Main St.
Bellefontaine, Ohio 43311

INDEXED ON MAP
6072 1D-2

McKinnon Description
Tract two

The following described real estate situated in the Township of Harrison, County of Logan, State of Ohio and being a part of Section 7, Town 2, Range 15 and being more particularly described as follows:

Being a 24.75 foot wide Lane, more particularly described as follows:

Beginning at the southwest corner to Robert Glen Herren, Jr.'s present 44.93 Acre tract in the centerline of C. H. No. 130;

Thence with Herren's south line the following three courses and distances, N. 88° 12' E. 1,171.50 feet to a point, N. 7° 45' E. 242.88 feet to a point and N. 80° 30' E. 1,058.62 feet to a stone at the northeast corner to said lane, passing through a post at Herren's southeast corner at 1,018.67 feet;

Thence S. 5° 00' W. 25.56 feet to a point at Mary E. King's northeast corner;

Thence with Mary E. King's north line the following three courses and distances, S. 80° 30' W. 1,034.01' feet to a point, S. 7° 45' W. 245.58 feet to a point and S. 88° 12' W. 1,188.80 feet to a point in the centerline of C. H. No. 130, said point being the northwest corner to Mary E. King's tract;

Thence with the centerline of C. H. No. 130, N. 10° 08' W. 25.01 feet to the place of beginning, containing 1.404 Acres, more or less.

I hereby certify that this is a true and accurate description as prepared by me on August 7, 1977.

Daniel E. Gilbert

Daniel E. Gilbert, P.S.
Reg. Sur. No. 5402
1041 N. Main St.
Bellefontaine, Ohio 43311

INDEXED ON MAP

6092 1D-3

FORRIS D. MCKINNON ETUX

MCKINNON SURVEY
 SECTIONS 1 AND 7 T.2 R.15
 HARRISON TOWNSHIP
 LOGAN COUNTY, OHIO
 AUGUST 7, 1977

SCALE: 1"=200'

ACREAGES

76.239 Ac. - SEC. 7
 + 27.936 Ac. - SEC. 1
 104.175 Ac.
 - 3.134 Ac. - OLD R.R.
 101.041 Ac. - TOTAL

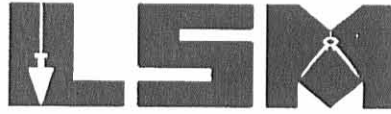


REC'D 11-21-01 SMY OK

Lee Surveying and Mapping Co., Inc.

Land Surveys • Topography • Subdivisions • Construction Layout

117 N. Madriver St.
Bellefontaine OH 43311



Phone: (937) 593-7335
Fax: (937) 593-7444

DEISHER 5.000 ACRES

Lying in Section 7, Town 2, Range 15, Harrison Township, Logan County, Ohio.

Being out of the Arthur L. Deisher and Elizabeth H. Deisher original 101.041 acre tract as deeded and described in Volume 391, Page 936 of the Logan County Records of Deeds and being more particularly described as follows:

Beginning at a MAG nail set on County Highway 130 center-line Station 135+68.66 at the southwest corner of the said 101.041 acre tract and the northwest corner of the C. Douglas Chamberlain original 43.583 acre tract (O.R. 173, Pg. 878),

THENCE, with the center-line of County Highway 130, N 10°-08'-00" W, a distance of 399.35 feet to a MAG nail set.

THENCE, N 79°-52'-00" E, a distance of 503.54 feet to a 5/8 inch iron rod set, passing a 5/8 inch iron rod set at 30.00 feet.

THENCE, S 10°-08'-00" E, a distance of 465.86 feet to a 5/8 inch iron rod set.

THENCE, with the north line of the said 43.583 acre tract, S 87°-23'-28" W, a distance of 507.91 feet to the point of beginning, passing a 5/8 inch iron rod set at 477.65 feet.

Containing 5.000 acres, of which 0.276 acre is within the highway right-of-way.

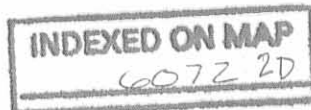
The basis for bearings is the center-line of County Highway 130, being, N 10°-08'-00" W, and all other bearings are from angles and distances measured in a field survey by Lee Surveying and Mapping Co., Inc. on November 9, 2001.

Description prepared by:


Jeffrey I. Lee
Professional Surveyor 6359
November 14, 2001



L-3271

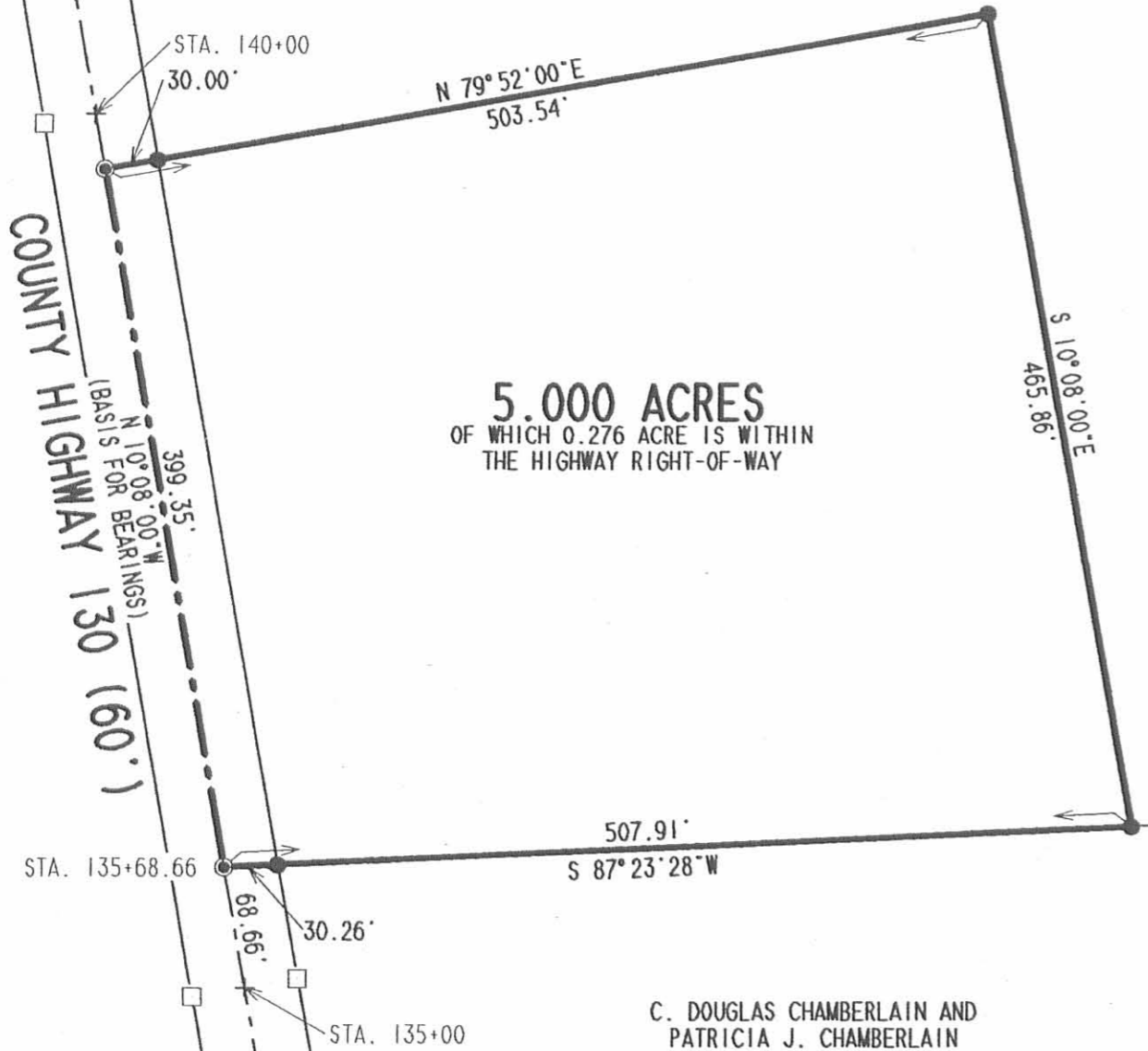
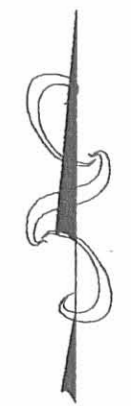
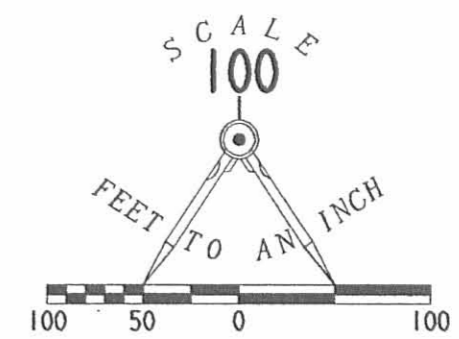


REC'D 11-20-01 SWM OK



2 WORKING DAYS
CALL TOLL FREE 800-362-2764
OHIO UTILITIES PROTECTION SERVICE.

- LEGEND
- 5/8 INCH IRON ROD SET
 - ⊙ MAG NAIL SET
 - CONCRETE RIGHT-OF-WAY MONUMENT FOUND



ARTHUR L. DEISHER AND
ELIZABETH H. DEISHER
ORIG. 101.041 ACRES
VOL. 391. PG. 936

SURVEY OF 5.000 ACRES OUT OF
THE ARTHUR L. DEISHER AND
ELIZABETH H. DEISHER
ORIGINAL 101.041 ACRE TRACT
VOLUME 391. PAGE 936
SECTION 7. TOWN 2. RANGE 15
HARRISON TOWNSHIP
LOGAN COUNTY, OHIO

C. DOUGLAS CHAMBERLAIN AND
PATRICIA J. CHAMBERLAIN
ORIG. 43.583 ACRES
O.R. 173. PG. 878



ORIGINAL STAMP IN GREEN

SURVEYED BY:

JEFFREY I. LEE
PROFESSIONAL SURVEYOR 6359
NOVEMBER 9, 2001

COPYRIGHT 2001 BY:
LEE SURVEYING & MAPPING CO., INC.
117 North Madriver Street
BELLEFONTAINE, OHIO 43311
(937) 593-7335

D 405 ARTDESH L-3271-3

INDEXED ON MAP
6672 2P

1954

ELLIOTT to WM. MCKINNON SURVEY

Being situated in Section 7, Town 2, Range 15 of Harrison Township, Logan County, Ohio, and being more particularly described as follows:

Beginning at the northeast corner of said Section 7; thence following the east line of said Section 7, S. 4°-15' W. 1528.0 feet to a point in the center of the channel of Flat Branch for the beginning point of this description.

Thence following same east line of said Section 7, S. 4°-15' W. 213.0 feet to a stone; thence following a fence line S. 79°-27' W. 529.0 feet to a hub; thence N. 5°-46' W. 637.6 feet to a hub; thence S. 87°-07' E. 121.0 feet to a stone in the channel of Flat Branch; thence with the center of the channel following the meandering thereof, for the next four courses; thence S. 62°-30' E. 55.0 feet; thence S. 9°-00' E. 66.0 feet; thence S. 35°-45' E. 226.0 feet; thence S. 79°-00' E. 293.0 feet to the point of beginning.

Containing 5.07 acres.

Surveyed from 83.43 acre tract.

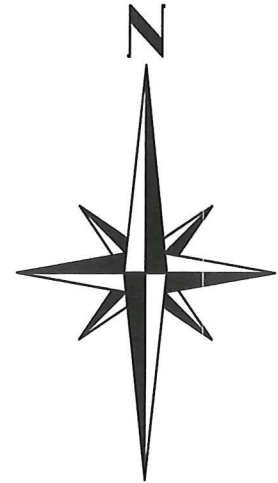
INDEXED ON MAP

6072 3D

7-29-24

APPROVED

PLAT OF SURVEY IN SECTION 7, TOWN 2, RANGE 15. B.M.R.S. HARRISON TOWNSHIP LOGAN COUNTY, OHIO



Arthur L. Deisher, Trustee and
Elizabeth H. Deisher, Trustee
Parcel No. 2, Tract 1, 96.041 acres
O.R. 704, pg. 113

COUNTY ROAD 130 (60')
(Highway Plan L-27)

(BASIS OF BEARINGS)

4.999 Acres

(0.276 Acres inside road right-of-way)

James Timothy Crawford and
Jessalyn Eve Crawford
Exhibit "A", 5.000 acres
O.R. 1415, pg. 786

Arthur L. Deisher, Trustee and
Elizabeth H. Deisher, Trustee
Parcel No. 2, Tract 1, 96.041 acres
O.R. 704, pg. 113

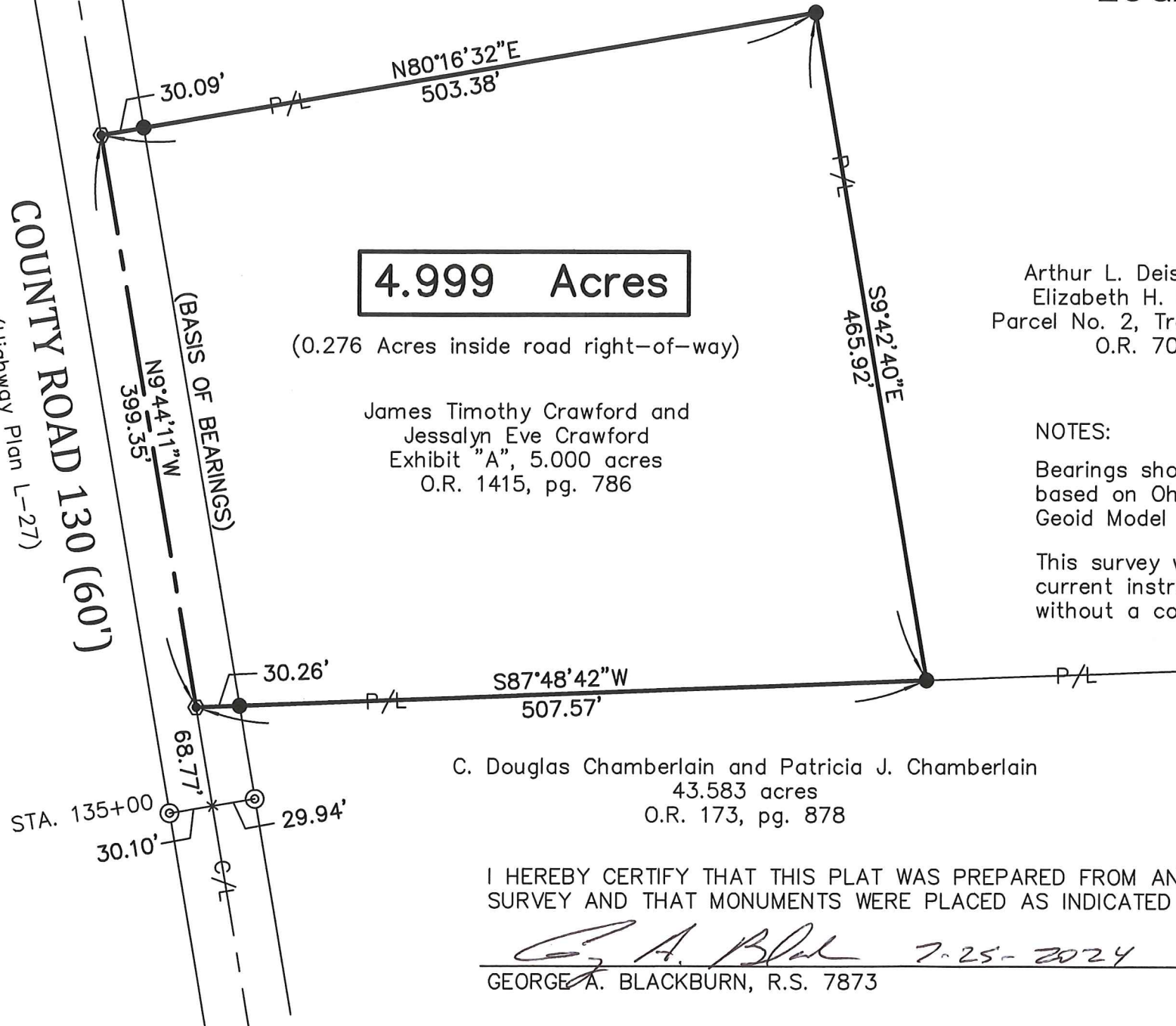
LEGEND

- ⊙ MAGNETIC NAIL FOUND
- 5/8" IRON BAR FOUND
- ⊙ CONCRETE MONUMENT FOUND

NOTES:

Bearings shown hereon are derived from GPS observations based on Ohio State Plane Coordinate System, North (NAD 83), Geoid Model 2018.

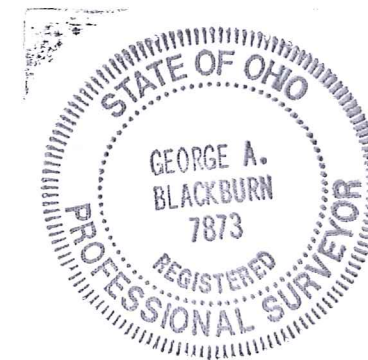
This survey was prepared from the information found in the current instruments of conveyance (shown hereon) and without a complete and accurate title search.



C. Douglas Chamberlain and Patricia J. Chamberlain
43.583 acres
O.R. 173, pg. 878

I HEREBY CERTIFY THAT THIS PLAT WAS PREPARED FROM AN ACTUAL FIELD SURVEY AND THAT MONUMENTS WERE PLACED AS INDICATED HEREON.

George A. Blackburn 7-25-2024
GEORGE A. BLACKBURN, R.S. 7873



INDEXED ON MAP
6072

BLACKBURN SURVEYING, LLC
6879 STATE ROUTE 287
WEST LIBERTY, OHIO 43357
(937) 465-0424

DATE : 7/25/2024
SCALE : 1" = 100'
FILE: James Crawford 7-24

REVISIONS	DATE	BY

PLAT PREPARED FOR JAMES TIMOTHY CRAWFORD

SHEET
1
OF 1