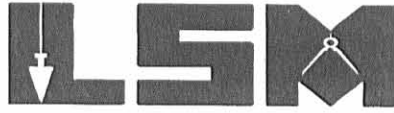


REV'D 5-22-04 SML/ML

# Lee Surveying and Mapping Co., Inc.

Land Surveys • Topography • Subdivisions • Construction Layout

117 N. Madriver St.  
Bellefontaine OH 43311



Phone: (937) 593-7335  
Fax: (937) 593-7444

**1975-2005 - 30 YEARS OF EXCELLENCE**

**JACOBS, EWING AND EWING  
2.599 ACRES**

Lying in Section 9, Town 3, Range 14, Harrison Township, Logan County, Ohio.

Being out of the Jenise D. Jacobs, Mark A. Ewing and Timothy J. Ewing original 51.552 acre tract as deeded and described in Official Record 791, Page 431, Tract II (reference Official Record 664, Page 136, Tract II) of the Logan County Records of Deeds and being more particularly described as follows:

Commencing at a 1 inch iron rod found on the east line of Section 9 at intersection of center-lines of Township Road 204 and Township Road 32.

THENCE, with the east line of Section 9 and the center-line of Township Road 32 (variable widths), S 5°-50'-13"W, a distance of 902.75 feet to a railroad spike found at the TRUE POINT OF BEGINNING.

THENCE, with the east line of Section 9 and the center-line of Township Road 32, S 5°-50'-13"W, a distance of 143.00 feet to a MAG nail set.

THENCE, N 84°-10'-00"W, a distance of 400.00 feet to a 5/8 inch iron rod set, passing a 5/8 inch iron rod set at 30.00 feet.

THENCE, N 5°-50'-56"E, a distance of 423.12 feet to a 5/8 inch iron rod set.

THENCE, S 84°-09'-47"E, a distance of 199.89 feet to a 5/8 inch iron rod found.

THENCE, with the west lines of the Timothy J. Ewing 0.64 acre tract (Vol. 341, Pg. 458) and the Rebecca R. Tanger 0.64 acre tract (O.R. 162, Pg. 17), S 5°-50'-00"W, a distance of 280.11 feet to a 5/8 inch iron rod found.

THENCE, with the south line of the said Tanger 0.64 acre tract, S 84°-10'-00"E, a distance of 200.00 feet to the point of beginning, passing a 5/8 inch iron rod found at 170.00 feet.


Containing 2.599 acres, of which 0.098 acre is within the highway right-of-way.

The basis for bearings is the center-line of Township Road 32, being S 5°-50'-13"W, and all other bearings are from angles and distances measured in a field survey by Lee Surveying and Mapping Co., Inc. on May 15, 2006.



ORIGINAL STAMP IN GREEN

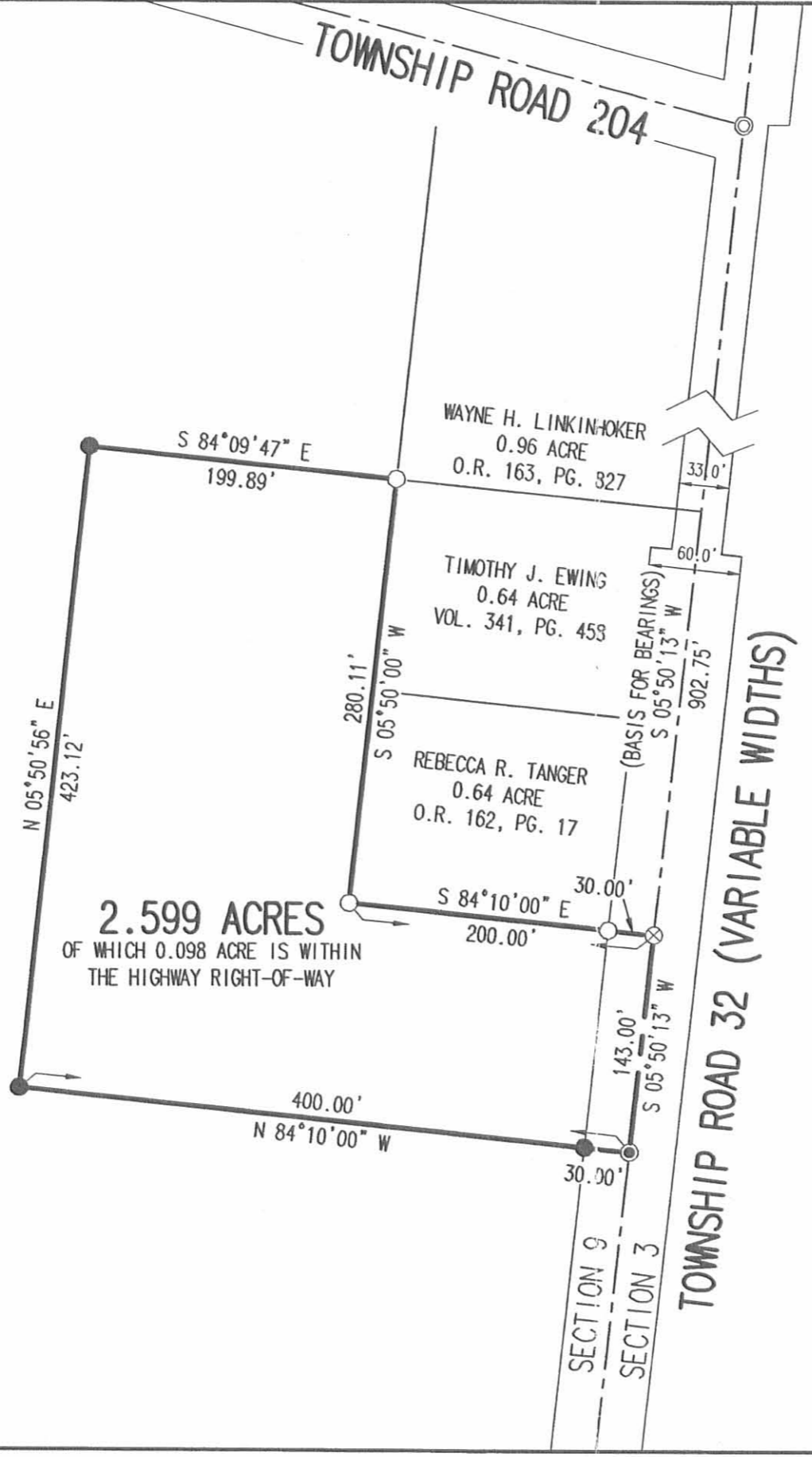
Description prepared by:

  
Jeffrey I. Lee  
Professional Surveyor 6359  
May 16, 2006

3404056A

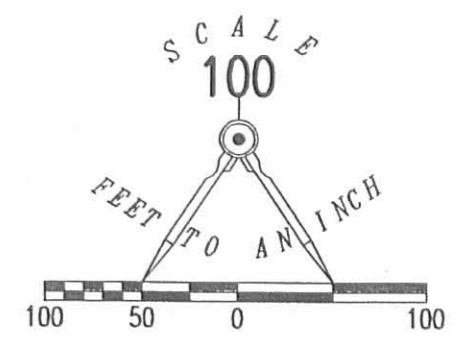


REV'D 5-22-06 SMM/ALZ



JENISE D. JACOBS, MARK A. EWING  
AND TIMOTHY J. EWING  
ORIGINAL 51.552 ACRES  
O.R. 791, PG. 431, TRACT II  
O.R. 664, PG. 136, TRACT II

**2.599 ACRES**  
OF WHICH 0.098 ACRE IS WITHIN  
THE HIGHWAY RIGHT-OF-WAY



- LEGEND:
- ⊗ RAILROAD SPIKE FOUND
  - MAG NAIL SET
  - ⊙ 1 INCH IRON ROD FOUND
  - 5/8 INCH IRON ROD FOUND
  - 5/8 INCH IRON ROD SET

**SURVEY OF 2.599 ACRES OUT OF THE  
JENISE D. JACOBS, MARK A. EWING  
AND TIMOTHY J. EWING  
ORIGINAL 51.552 ACRE TRACT  
OFFICIAL RECORD 791, PAGE 431, TRACT II  
OFFICIAL RECORD 664, PAGE 136, TRACT II  
SECTION 9, TOWN 3, RANGE 14  
HARRISON TOWNSHIP  
LOGAN COUNTY, OHIO**

SURVEYED BY:

*Jeffrey I. Lee*  
JEFFREY I. LEE  
PROFESSIONAL SURVEYOR 6359  
MAY 15, 2006



ORIGINAL STAMP IN GREEN

COPYRIGHT 2006 BY:  
**LEE SURVEYING & MAPPING CO., INC.**  
117 North Madriver Street  
BELLEFONTAINE, OHIO 43311  
(937) 593-7335  
KSR D0506 3404056A L-3404-3

2 WORKING DAYS  
**BEFORE YOU DIG**  
CALL TOLL FREE **800-362-2764**  
OHIO UTILITIES PROTECTION SERVICE

**INDEXED ON MAP**  
5251 1P

LESLIE H. GEESLIN

REGISTERED SURVEYOR NO. 5248

P. O. BOX 274

RUSHSVLVANIA, OHIO 43347

PHONE: (513) 468-2793

EWING SURVEY

May, 1979

The following described real estate situated in the State of Ohio, County of Logan, Township of Harrison and being part of the southeast  $\frac{1}{4}$  of Section 9, Town 3, Range 14, B. M. R. S. and more particularly described as follows:

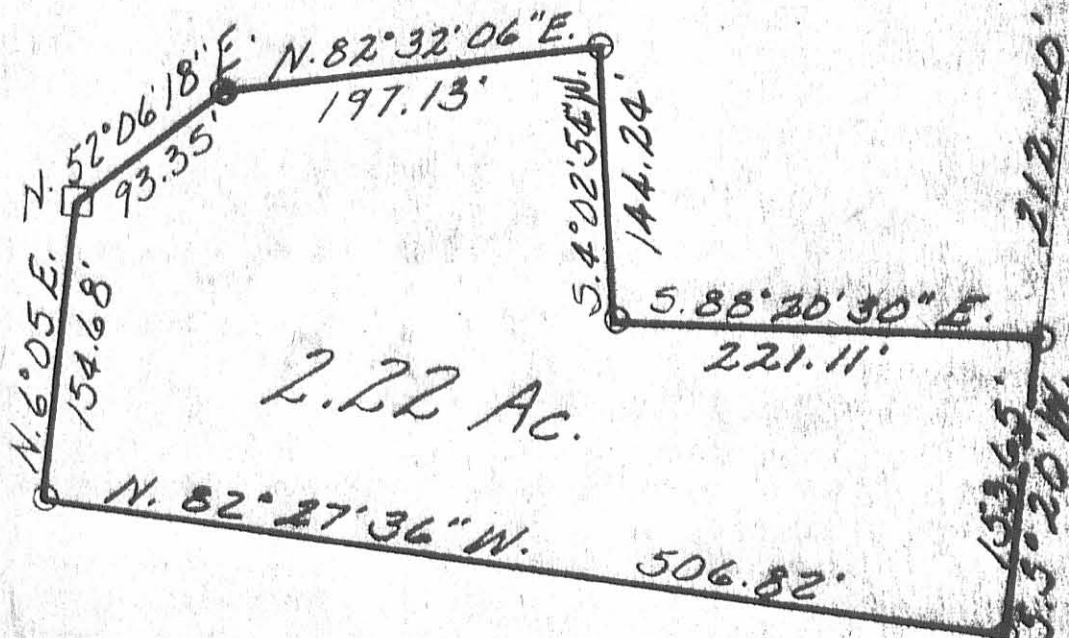
Beginning at an iron bar in the centerline of Township Road 32 that is S.  $5^{\circ} 20' W.$ , 212.40 feet from an iron pipe at Station 17 plus 32 as shown on Plan X-32 of the Logan County Engineer's office; thence with said centerline S.  $5^{\circ} 20' W.$  153.65 feet to an iron bar; thence N.  $82^{\circ} 27' 36'' W.$  506.82 feet to an iron bar; thence N.  $6^{\circ} 05' E.$  154.68 feet to a wood corner post; thence N.  $52^{\circ} 06' 18'' E.$  93.35 feet to an iron pipe; thence N.  $82^{\circ} 32' 06'' E.$  197.13 feet to an iron bar; thence S.  $4^{\circ} 02' 54'' W.$  144.24 feet to an iron bar; thence S.  $88^{\circ} 20' 30'' E.$  221.11 feet to the place of beginning.

Containing 2.22 acres more or less.

The above described 2.22 acres tract being on the east side of Thomas J. Ewing's 45.18 acre tract.

Reference is hereby made to a plat of this survey on file with the Logan County Engineer.

INDEXED ON MAP  
5251 2D



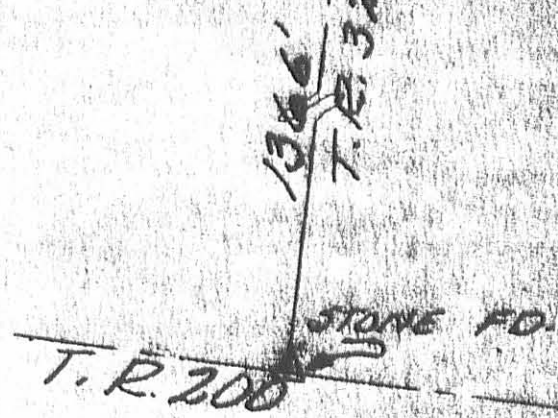
STA. 17+32.00 @ 1" PIPE PD.



2.22 Ac.

LEGEND :

- = IRON BAR
- ⊙ = IRON PIPE
- = WOOD COR. POST



EWING SURVEY  
 MAY, 1979  
 SEC. 9 T. 3 R. 14  
 HARRISON TOWNSHIP  
 LOGAN COUNTY, OHIO  
 SCALE 1"=100'

525.11 2P  
 INDEXED ON MAP



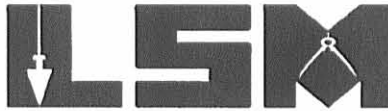
LESLIE M. GEESLIN  
 DISTRICT SURVEYOR

REC'D 9-14-06 SUM OR

# Lee Surveying and Mapping Co., Inc.

Land Surveys • Topography • Subdivisions • Construction Layout

117 N. Madriver St.  
Bellefontaine OH 43311



Phone: (937) 593-7335  
Fax: (937) 593-7444

**1975-2005 - 30 YEARS OF EXCELLENCE**

**MARKIN MOREHEAD, LTD.  
2.300 ACRES**

Lying in Section 9, Town 3, Range 14, Harrison Township, Logan County, Ohio.

Being out of the Markin Morehead, Ltd., 48.955 acre tract as deeded and described in Official Record 834, Page 910 of the Logan County Records of Deeds and being more particularly described as follows:

Commencing on a stone found in a monument box at the southeast corner of Section 9, on the south line of Harrison Township and on the intersection of the center-lines of Township Road 200 and Township Road 32.

THENCE, with the east line of Section 9 and the center-line of Township Road 32 (40 feet wide), N 5°-20'-00"E, a distance of 1168.27 feet to a MAG nail set at the TRUE POINT OF BEGINNING.

THENCE, N 82°-28'-09"W, a distance of 509.52 feet to a 5/8 inch iron rod set, passing a 5/8 inch iron rod set at 20.12 feet.

THENCE, N 6°-05'-00"E, a distance of 197.25 feet to a 3/4 inch iron rod found.

THENCE, with the south line of the Fred W. McColloch 2.220 acre tract (Vol. 404, Pg. 647), S 82°-27'-36"E, a distance of 506.94 feet to a railroad spike found on the east line of Section 9 and the center-line of Township Road 32, passing a 5/8 inch iron rod found at 476.82 feet.

THENCE, with the east line of Section 9 and the center-line of Township Road 32, S 5°-20'-00"W, a distance of 197.25 feet to the point of beginning.


Containing 2.300 acres, of which 0.091 acre is within the highway right-of-way.

The basis for bearings is the east line of Section 9, being N 5°-20'-00"E, and all other bearings are from angles and distances measured in a field survey by Lee Surveying and Mapping Co., Inc. on September 13, 2006.

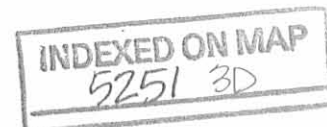


ORIGINAL STAMP IN GREEN

Description prepared by:

  
Jeffrey I. Lee  
Professional Surveyor 6359  
September 13, 2006

3404056

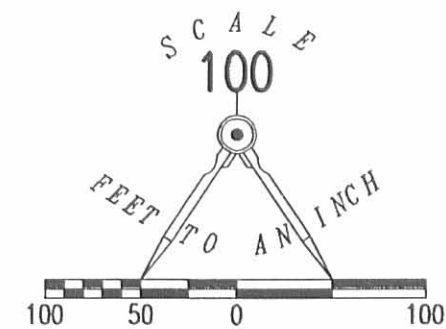
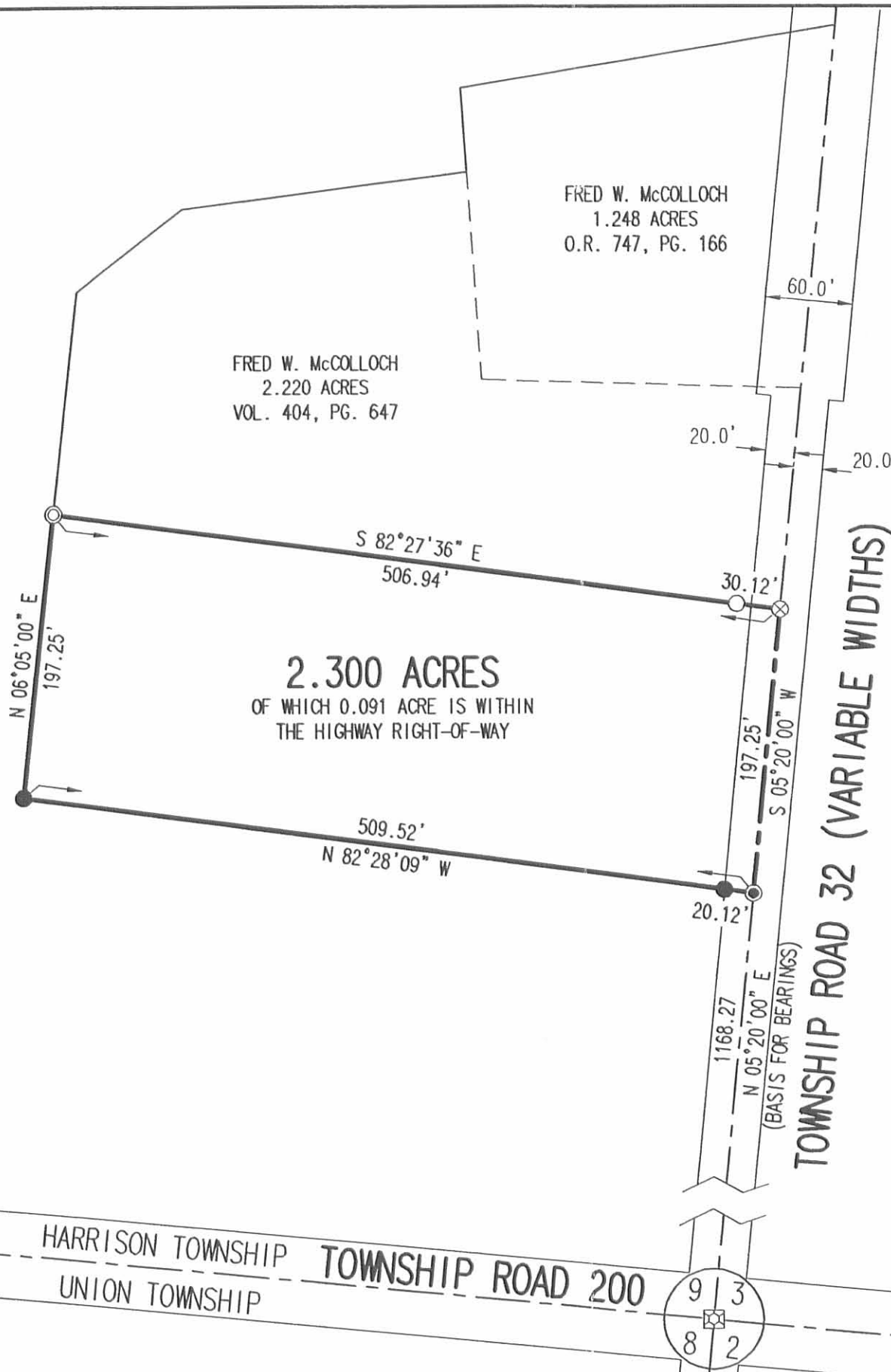


REV'D 9-14-06 SMM OK

LEGEND:

- ☒ STONE FOUND IN A MONUMENT BOX
- ⊗ RAILROAD SPIKE FOUND
- ⊙ 3/4 INCH IRON ROD FOUND
- 5/8 INCH IRON ROD SET
- ⊙ MAG NAIL SET
- 5/8 INCH IRON ROD FOUND

MARKIN MOREHEAD, LTD.  
48.955 ACRES  
O.R. 834, PG. 910



SURVEY OF 2.300 ACRES OUT OF THE  
MARKIN MOREHEAD, LTD.  
48.955 ACRE TRACT  
OFFICIAL RECORD 834, PAGE 910  
SECTION 9, TOWN 3, RANGE 14  
HARRISON TOWNSHIP  
LOGAN COUNTY, OHIO

SURVEYED BY:



*(Signature)*  
JEFFREY T. LEE  
PROFESSIONAL SURVEYOR 6359  
SEPTEMBER 13, 2006

COPYRIGHT 2006 BY:  
LEE SURVEYING & MAPPING CO., INC.  
117 North Madriver Street  
BELLEFONTAINE, OHIO 43311  
(937) 593-7335

KSR D0906 3404056 L-3404-3

2 WORKING DAYS  
**BEFORE YOU DIG**  
CALL TOLL FREE **800-362-2764**  
OHIO UTILITIES PROTECTION SERVICE

INDEXED ON MAP  
5251 38

REC'D 6-27-06 8M OK

# Lee Surveying and Mapping Co., Inc.

Land Surveys • Topography • Subdivisions • Construction Layout

117 N. Madriver St.  
Bellefontaine OH 43311



Phone: (937) 593-7335  
Fax: (937) 593-7444

**1975-2005 - 30 YEARS OF EXCELLENCE**

**JACOBS, EWING AND EWING  
48.955 ACRES**

Lying in Section 9, Town 3, Range 14, Harrison Township, Logan County, Ohio.

Being out of the Jenise D. Jacobs, Mark A. Ewing and Timothy J. Ewing original 51.552 acre tract as deeded and described in Official Record 791, Page 431, Tract II (reference Official Record 664, Page 136, Tract II) of the Logan County Records of Deeds and being more particularly described as follow:

Commencing at a stone found in a monument box on the southeast corner of Section 9 on the south line of Harrison Township at the intersection of the center-lines of Township Road 200 and Township Road 32.

THENCE, with the east line of Section 9 and the center-line of Township Road 32 (varied width), N 5°-20'-00" E, a distance of 637.24 feet to a railroad spike found at the TRUE POINT OF BEGINNING.

THENCE, with the north line of the Danielle R. Frost 16.04 acre tract (O.R. 747, Pg. 249), N 79°-30'-13" W, a distance of 1028.49 feet to a 3/4 inch iron rod found, passing a 5/8 inch iron rod set at 30.24 feet.

THENCE, with the east line of the George Hanson Deal, Trustee 95.76 acre tract (O.R. 800, Pg. 353) and the east line of the Don Downing etal 16.55 acre tract (O.R. 464, Pg. 601, Tract III), N 5°-31'-10" E, a distance of 2720.66 feet to a railroad spike found on the center-line of Township Road 204, passing a 5/8 inch iron rod set at 2693.47 feet.

THENCE, with the center-line of Township Road 204 (50 feet wide), the following two courses:

S 61°-19'-38" E, a distance of 20.56 feet to a railroad spike found.

S 74°-54'-42" E, a distance of 31.46 feet to a railroad spike found.

THENCE, with the west line of the Larry D. Rose 0.63 acre tract (O.R. 526, Pg. 60), S 5°-44'-18" W, a distance of 202.70 feet to a 5/8 inch iron rod set, passing a 5/8 inch iron rod set at 25.35 feet.

THENCE, with the south lines of the said 0.63 acre tract, the Jesse J. Meadows 0.64 acre tract (Vol. 369, Pg. 801), the Nancy Evans-Donley 0.64 acre tract (O.R. 405, Pg. 123), the Charles M. Feasel 0.64 acre tract (Vol. 360, Pg. 913), the Roger D. Evans 0.64 acre tract (O.R. 336, Pg. 700), and the Betty J. Smith 0.64 acre tract (Vol. 388, Pg. 602), S 74°-52'-56" E, a distance of 790.38 feet to a 3/4 inch iron rod found.

THENCE, with the west lines of the Steven J. Forster 1.04 acre tract (O.R. 538, Pg. 340) and the Wayne H. Linkinhoker 0.96 acre tract (O.R. 163, Pg. 827), S 5°-50'-00" W, a distance of 452.64 feet to a 5/8 inch iron rod found.

THENCE, N 84°-09'-47"W, a distance of 199.89 feet to a 5/8 inch iron rod set.

THENCE, S 5°-50'-56"W, a distance of 423.12 feet to a 5/8 inch iron rod set.

INDEXED ON MAP  
5251 417-1

# Lee Surveying and Mapping Co., Inc.

Land Surveys • Topography • Subdivisions • Construction Layout

117 N. Madriver St.  
Bellefontaine OH 43311



Phone: (937) 593-7335  
Fax: (937) 593-7444

**1975-2005 - 30 YEARS OF EXCELLENCE**

THENCE, S 84°-10'-00"E, a distance of 400.00 feet to a MAG nail set on the east line of Section 9 and the center-line of Township Road 32, passing a 5/8 inch iron rod set at 370.00 feet.

THENCE, with the east line of Section 9 and the center-line of Township Road 32, S 5°-50'-13" W, a distance of 450.36 feet to a MAG nail found.

THENCE, with the lines of the Fred W. McColloch 1.248 acre tract (O.R. 747, Pg. 166), the following two courses:

S 80°-28'-44" W, a distance of 262.80 feet to a 5/8 inch iron rod set, passing a 5/8 inch iron rod set at 31.11 feet.

S 4°-02'-45" E, a distance of 58.23 feet to a 5/8 inch iron rod set.

THENCE, with the lines of the Fred W. McColloch 2.22 acre tract (Vol. 404, Pg. 647), the following four (4) courses:

S 82°-32'-06" W, a distance of 197.13 feet to a 3/4 inch iron rod found;

S 52°-06'-18" W, a distance of 93.35 feet to a 1-1/4 inch "T" post found;

S 6°-05'-00" W, a distance of 154.68 feet to a 3/4 inch iron rod found;

S 82°-27'-36" E, a distance of 506.94 feet to a railroad spike found on the east line of Section 9 and the center-line of Township Road 32, passing a 5/8 inch iron rod set at 476.94 feet.

THENCE, with the east line of Section 9 and the center-line of Township Road 32, S 5°-20'-00" W, a distance of 728.28 feet to the point of beginning.

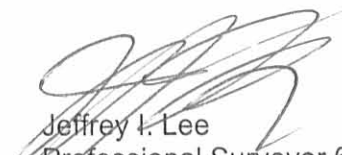
Containing 48.955 acres, of which 0.653 acre is within the highway right-of-way.

The basis for bearings is the east line of Section 9, being N 5°-20'-00" E, and all other bearings are from angles and distances measured in a field survey by Lee Surveying and Mapping Co., Inc. on August 22, 2002 and May 15, 2006.



ORIGINAL STAMP IN GREEN

Description prepared by:

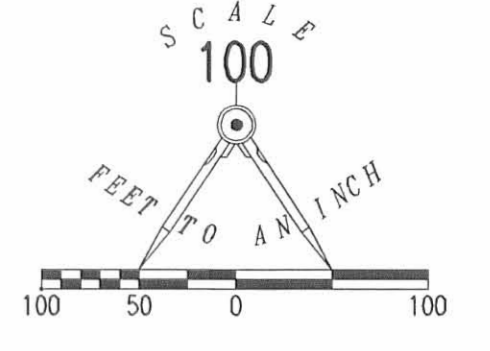
  
Jeffrey I. Lee  
Professional Surveyor 6359  
June 23, 2006

3404066

INDEXED ON MAP  
525140-2



REV 027-00 SW, RL



- LEGEND:
- 5/8 INCH IRON ROD SET
  - 5/8 INCH IRON ROD FOUND
  - ⊗ 3/4 INCH IRON ROD FOUND
  - ⊙ 1 INCH IRON ROD FOUND
  - ⊕ 1-1/4 INCH "1" POST FOUND
  - MAG NAIL SET
  - ⊗ MAG NAIL FOUND
  - ⊙ RAILROAD SPIKE FOUND
  - ⊠ STONE FOUND IN A MONUMENT BOX

DON DOWNING ETAL  
16.55 ACRES  
O.R. 464, PG. 601  
TRACT III

GEORGE HANSON DEAL, TRUSTEE  
95.76 ACRES  
O.R. 800, PG. 353

48.955 ACRES  
OF WHICH 0.653 ACRE IS WITHIN  
THE HIGHWAY RIGHTS-OF-WAY  
JENISE D. JACOBS, MARK A. EWING  
AND TIMOTHY J. EWING  
ORIGINAL 51,552 ACRES  
O.R. 791, PG. 431, TRACT III  
O.R. 664, PG. 136, TRACT III

DANIELLE R. FROST  
16.04 ACRES  
O.R. 747, PG. 249

TOWNSHIP ROAD 204 (50')

TOWNSHIP ROAD 32 (VARIABLE WIDTHS)

HARRISON TOWNSHIP UNION TOWNSHIP  
TOWNSHIP ROAD 200

SURVEY OF 48.955 ACRES OUT OF THE  
JENISE D. JACOBS, MARK A. EWING  
AND TIMOTHY J. EWING  
ORIGINAL 51,552 ACRE TRACT  
OFFICIAL RECORD 791, PAGE 431, TRACT III  
OFFICIAL RECORD 664, PAGE 136, TRACT III  
SECTION 9, TOWN 3, RANGE 14  
HARRISON TOWNSHIP  
LOGAN COUNTY, OHIO



SURVEYED BY:  
*Jeffrey L. Lee*  
JEFFREY L. LEE  
PROFESSIONAL SURVEYOR 6359  
AUGUST 22, 2002  
REVISED MAY 15, 2006

COPYRIGHT 2006 BY:  
LEE SURVEYING & MAPPING CO., INC.  
117 North Madriver Street  
BELLEFONTAINE, OHIO 43311  
(937) 593-7335

2 WORKING DAYS  
BEFORE YOU DIG  
CALL TOLL FREE 800-362-2764  
OHIO UTILITIES PROTECTION SERVICE.

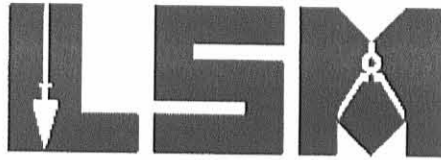


REC'D 5-11-07 SUM OK

# Lee Surveying and Mapping Co., Inc.

Land Surveys • Topography • Subdivisions • Construction Layout

117 N. Madriver St.  
Bellefontaine OH 43311



Phone: (937) 593-7335  
Fax: (937) 593-7444

## MARKIN MOREHEAD, LTD. 17.357 ACRES

Lying in Section 9, Town 3, Range 14, Harrison Township, Logan County, Ohio.

Being out of the Markin Morehead, Ltd., 48.955 acre tract as deeded and described in Official Record 834, Page 910 of the Logan County Records of Deeds and being more particularly described as follows:

Commencing on a stone found in a monument box at the southeast corner of Section 9, on the south line of Harrison Township and on the intersection of the center-lines of Township Road 200 and Township Road 32.

THENCE, with the east line of Section 9 and the center-line of Township Road 32 (variable widths), the following two courses:

N 5°20'-00"E, a distance of 1731.52 feet to a 3/4 inch iron rod found.

N 5°50'-13"E, a distance of 40.61 feet to a MAG nail found at the TRUE POINT OF BEGINNING.

THENCE, with the northerly line of the Fred W. McColloch 0.613 acre tract (O.R. 851, Pg. 177), S 84°-35'-40"W, a distance of 522.40 feet to a 5/8 inch iron rod found, passing a 5/8 inch iron rod found at 30.54 feet.

THENCE, N 4°03'-26"E, a distance of 85.00 feet to a 5/8 inch iron rod set.

THENCE, N 82°33'-52"W, a distance of 506.34 feet to a 5/8 inch iron rod set.

THENCE, with the east line of the George Hanson Deal, Trustee 95.76 acre tract (O.R. 800, Pg. 353), N 5°31'-10"E, a distance of 876.24 feet to a 5/8 inch iron rod found.

THENCE, with the south line of the Larry Rose 10.116 acre tract (O.R. 851, Pg. 987), S 84°09'-47"E, a distance of 626.10 feet to a 5/8 inch iron rod found.

THENCE, with the lines of the Timothy J. Ewing 2.599 acre tract (O.R. 833, Pg. 567), the following two courses:

S 5°50'-56"W, a distance of 423.12 feet to a 5/8 inch iron rod found.

S 84°10'-00"E, a distance of 400.00 feet to a MAG nail found on the east line of Section 9 and the center-line of Township Road 32 (60 feet wide), passing a 5/8 inch iron rod found at 370.00 feet.

THENCE, with the east line of Section 9 and the center-line of Township Road 32, S 5°50'-13"W, a distance of 450.36 feet to the point of beginning.

Containing 17.357 acres, of which 0.312 acre is within the highway right-of-way.

The basis for bearings is the east line of Section 9 at the intersection of center-lines of Township Road 200 and Township Road 32, being N 5°20'-00"E, and all other bearings are from angles and distances measured in a field survey by Lee Surveying and Mapping Co., Inc. on April 3, 2007, revised May 4, 2007.



ORIGINAL STAMP IN GREEN

Description prepared by:

William K. Bruce  
Professional Surveyor 7437  
April 4, 2007  
Revised May 10, 2007

INDEXED ON MAP  
5251 5D

3404037

REC'D 5-11-07 DMJ OK

DON DOWNING, ETAL  
16.55 ACRES  
O.R. 464, PG. 601  
TRACT III

LARRY ROSE  
10.116 ACRES  
O.R. 851, PG. 987

GEORGE HANSON DEAL, TRUSTEE  
95.76 ACRES  
O.R. 800, PG. 353

17.357 ACRES  
OF WHICH 0.312 ACRE IS WITHIN  
THE HIGHWAY RIGHT-OF-WAY

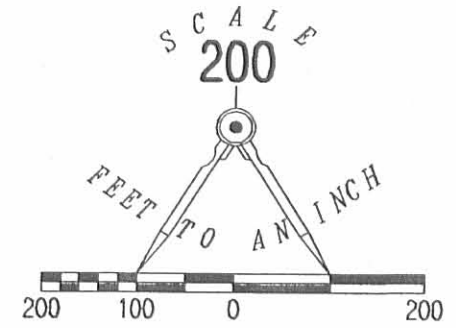
FRED W. McCOLLOCH  
0.613 ACRE  
O.R. 851, PG. 177

MARKIN MOREHEAD, LTD.  
48.955 ACRES  
O.R. 834, PG. 910

QUARTER SECTION LINE  
TIMOTHY J. EWING  
2.599 ACRES  
O.R. 833, PG. 567

TOWNSHIP ROAD 32 (VARIABLE WIDTHS)

TOWNSHIP ROAD 200  
HARRISON TOWNSHIP  
UNION TOWNSHIP



LEGEND:

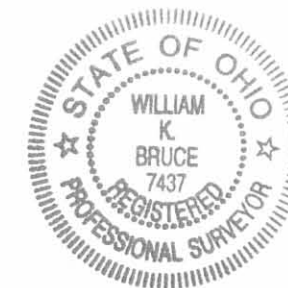
- ⊙ 3/4 INCH IRON ROD FOUND
- ⊗ MAG NAIL FOUND
- 5/8 INCH IRON ROD SET
- 5/8 INCH IRON ROD FOUND
- ⊠ STONE FOUND IN MONUMENT BOX

SURVEY OF 17.357 ACRES OUT OF THE  
MARKIN MOREHEAD, LTD.  
48.955 ACRE TRACT  
OFFICIAL RECORD 834, PAGE 910  
SECTION 9, TOWN 3, RANGE 14  
HARRISON TOWNSHIP  
LOGAN COUNTY, OHIO

SURVEYED BY:

*William K. Bruce*

WILLIAM K. BRUCE  
PROFESSIONAL SURVEYOR 7437  
APRIL 3, 2007  
REVISED MAY 4, 2007



ORIGINAL STAMP IN GREEN

COPYRIGHT 2007 BY:  
LEE SURVEYING & MAPPING CO., INC.  
117 North Madriver Street  
BELLEFONTAINE, OHIO 43311  
(937) 593-7335  
surveys@lsmcinc.us

KSR D0407 3404037REV 3404106A.ASC L-3404-3

2 WORKING DAYS  
BEFORE YOU DIG  
CALL TOLL FREE 800-362-2764  
OHIO UTILITIES PROTECTION SERVICE

INDEXED ON MAP  
5251 5P

EWING SURVEY

February 12, 1972

The following described real estate situated in Section 9, Town 3, Range 14, Harrison Township, Logan County, Ohio and being more particularly described as follows:

Beginning at an iron bar in the east line of Section 9 and the centerline of T.R. 32 that is S. 5° 50' W. 762.7 feet from an iron bar in the east line of Section 9 at the intersection of the centerline of T.R. 204 with the old centerline of T.R. 32 as shown on page 28 of Logan County Engineer Field Book No. 701; thence N. 84° 10' W. 200.0 feet to an iron bar, passing an iron bar at 20.0 feet; thence S. 5° 50' W. 140.0 feet to an iron bar; thence S. 84° 10' E. 200.0 feet to an iron bar in the centerline of T.R. 32, passing an iron bar at 180.0 feet; thence with said centerline N. 5° 50' E. 140.0 feet to the place of beginning.

Containing 0.64 acre, more or less.

The above described 0.64 acre being on the east side of Thomas Ewing's 62.5 acre tract.

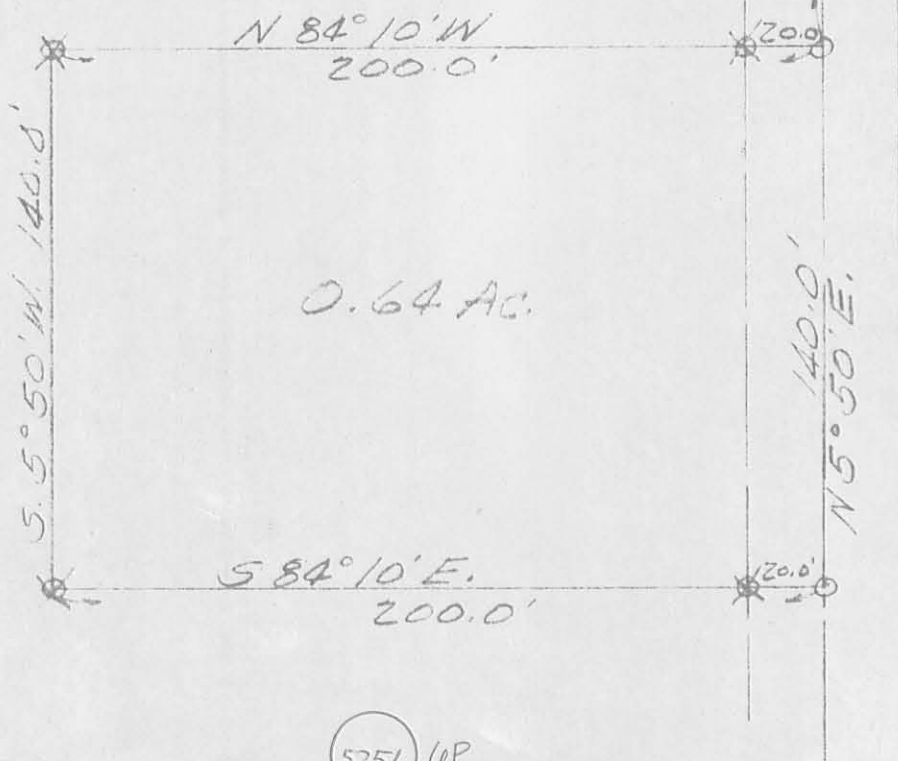


6D

5251

EWING SURVEY  
 FEBRUARY 12, 1972  
 SEC. 9 T. 3 R. 14  
 HARRISON TOWNSHIP  
 LOGAN COUNTY, OHIO

SCALE 1" = 50'  
 O = R.I.R. SPIKE  
 \* = 3/4" IRON BAR  
 REF: P. 28 F.B. 701



5251 6P

INDEXED ON MAP

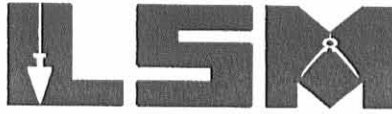
LESLIE H. GEEGLIN  
 REG. SURVEYOR 5248

REC'D 10-17-06 SMY OK

# Lee Surveying and Mapping Co., Inc.

Land Surveys • Topography • Subdivisions • Construction Layout

117 N. Madriver St.  
Bellefontaine OH 43311



Phone: (937) 593-7335  
Fax: (937) 593-7444

**1975-2005 - 30 YEARS OF EXCELLENCE**

**MARKIN MOREHEAD, LTD.  
0.613 ACRE**

Lying in Section 9, Town 3, Range 14, Harrison Township, Logan County, Ohio.

Being out of the Markin Morehead, Ltd., 48.955 acre tract as deeded and described in Official Record 834, Page 910 of the Logan County Records of Deeds and being more particularly described as follows:

Commencing on a stone found in a monument box at the southeast corner of Section 9, on the south line of Harrison Township and on the intersection of the center-lines of Township Road 200 and Township Road 32.

THENCE, with the east line of Section 9 and the center-line of Township Road 32 (variable widths), N 5°-20'-00"E, a distance of 1772.13 feet to a MAG nail found at the TRUE POINT OF BEGINNING.

THENCE, with the lines of the Fred W. McColloch 1.248 acre tract (O.R. 747, Pg. 166), the following two courses:

S 80°-28'-44"W, a distance of 262.80 feet to a 5/8 inch iron rod found, passing a 5/8 inch iron rod found at 31.11 feet.

S 4°-02'-45"E, a distance of 58.23 feet to a 5/8 inch iron rod found.

THENCE, with the lines of the Fred W. McColloch 2.220 acre tract (Vol. 404, Pg. 647), the following three courses:

S 82°-32'-06"W, a distance of 197.13 feet to a 3/4 inch iron rod found.

S 52°-06'-18"W, a distance of 93.35 feet to a 1-1/4 inch "T" post found.

S 6°-05'-00"W, a distance of 154.68 feet to a 3/4 inch iron rod found.

THENCE, N 4°-03'-26"E, a distance of 289.82 feet to a 5/8 inch iron rod set.

THENCE, N 84°-35'-40"E, a distance of 522.40 feet to the point of beginning, passing 5/8 inch iron rods set at 259.34 feet and 491.86 feet.


Containing 0.613 acre, of which 0.001 acre is within the highway right-of-way.

The basis for bearings is the east line of Section 9, being N 5°-20'-00"E, and all other bearings are from angles and distances measured in a field survey by Lee Surveying and Mapping Co., Inc. on September 18, 2006.

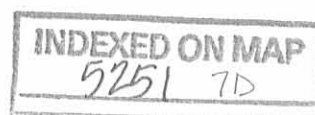


ORIGINAL STAMP IN GREEN

Description prepared by:

  
Jeffrey I. Lee  
Professional Surveyor 6359  
October 16, 2006

3404106

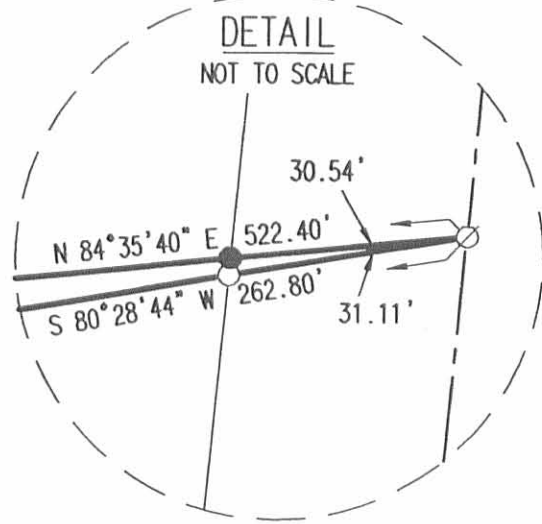
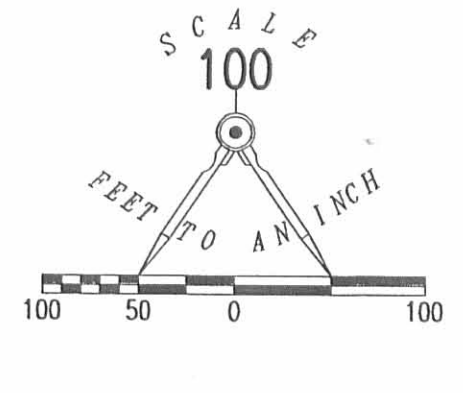
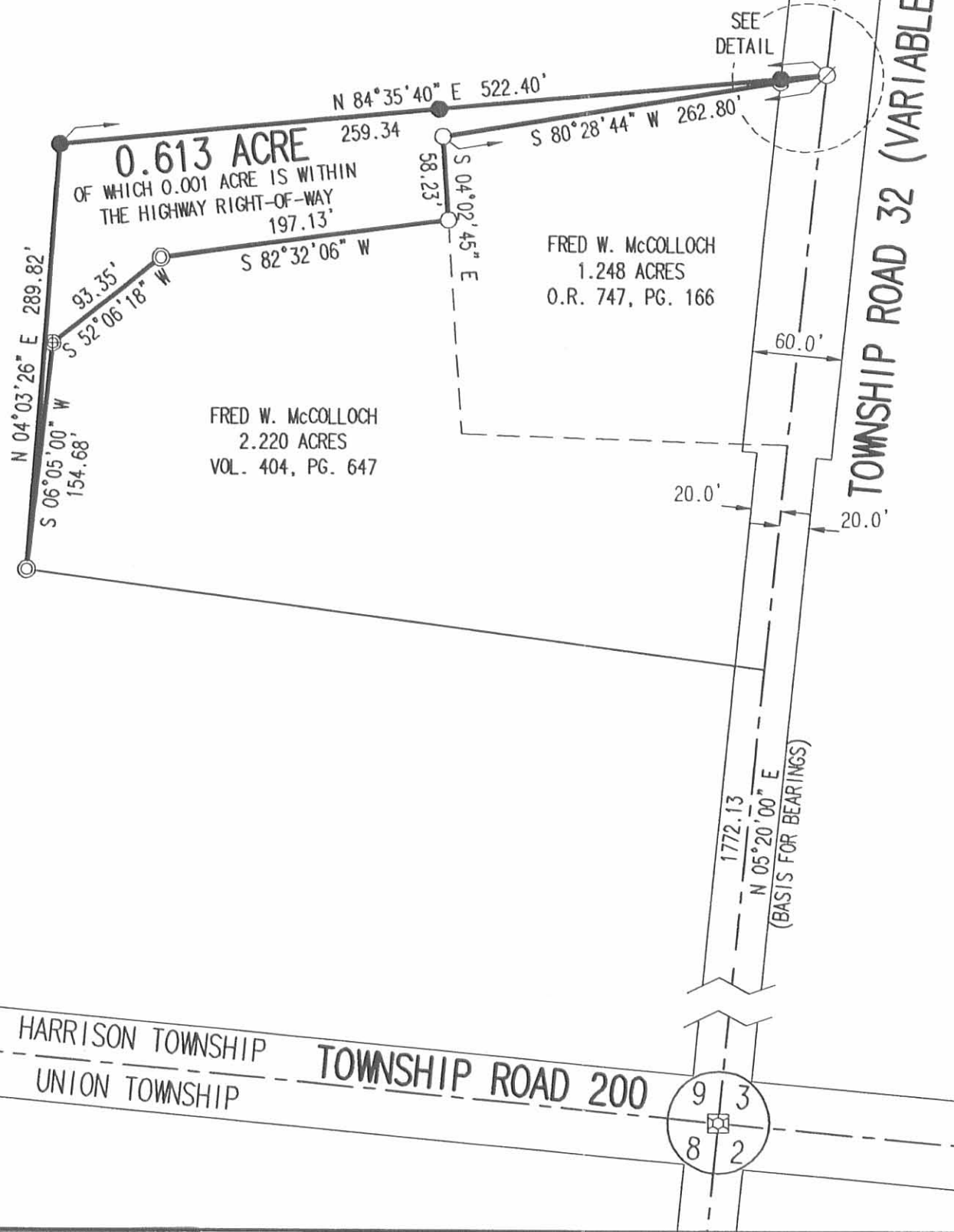


REC'D 10-17-06 SWY BK

LEGEND:

- ☒ STONE FOUND IN A MONUMENT BOX
- 5/8 INCH IRON ROD SET
- ⊗ MAG NAIL FOUND
- 5/8 INCH IRON ROD FOUND
- ⊙ 3/4 INCH IRON ROD FOUND
- ⊕ 1-1/4 INCH "T" POST FOUND

MARKIN MOREHEAD, LTD.  
48.955 ACRES  
O.R. 834, PG. 910



SURVEY OF 0.613 ACRE OUT OF THE  
MARKIN MOREHEAD, LTD.  
48.955 ACRE TRACT  
OFFICIAL RECORD 834, PAGE 910  
SECTION 9, TOWN 3, RANGE 14  
HARRISON TOWNSHIP  
LOGAN COUNTY, OHIO

SURVEYED BY:

JEFFREY I. LEE



PROFESSIONAL SURVEYOR 6359  
SEPTEMBER 18, 2006  
REVISED OCTOBER 16, 2006

COPYRIGHT 2006 BY:  
LEE SURVEYING & MAPPING CO., INC.  
117 North Madriver Street  
BELLEFONTAINE, OHIO 43311  
(937) 593-7335

ORIGINAL STAMP IN GREEN

KSR D0906 3404106 3404106.ASC L-3404-3

2 WORKING DAYS  
BEFORE YOU DIG  
CALL TOLL FREE 800-362-2764  
OHIO UTILITIES PROTECTION SERVICE.

INDEXED ON MAP  
5251 7P