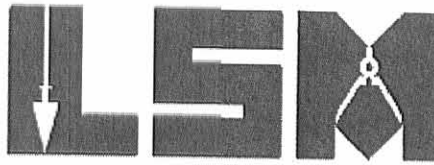


REC'D 12-11-09

Lee Surveying and Mapping Co., Inc.

Land Surveys • Topography • Subdivisions • Construction Layout

117 N. Madriver St.
Bellefontaine OH 43311



Phone: (937) 593-7335
Fax: (937) 593-7444

URBANA, BELLEFONTAINE AND NORTHERN RAILWAY CO. 3.017 ACRES

Lying in Section 4, Town 3, Range 14, Between the Miami Rivers Survey, Harrison Township, Logan County, Ohio.

Being all of the Urbana, Bellefontaine and Northern Railway Co., 3.03 acre tract as deeded and described in Volume 97, Page 414 of the Logan County Records of Deeds and being more particularly described as follows:

Commencing on a stone found in a monument box at the southwest corner of Section 4, on the intersection of the center-lines of County Highway 32 (60 feet wide) and County Highway 11 (60 feet wide) at center-line Station 53+44 (County Highway 32 - Logan County Engineer's Field Book 615, Page 56).

THENCE, with the west line of Section 4 and within the right-of-way of County Highway 32, N 03°-04'-17"E, a distance of 1360.12 feet to a 5/8 inch iron bolt found, passing a MAG nail found at 1300.12 feet.

THENCE, with the south lines of the Commissioners of Logan County, Ohio 37 acre tract (Vol. 133, Pg. 485) and the Board of Logan County Commissioners 1.104 acre tract (O.R. 172, Pg. 660), S 86°-49'-26"E, a distance of 1376.79 feet to a 5/8 inch iron rod found, passing a 5/8 inch iron rod set at 29.79 feet.

THENCE, with the east line of the said 1.104 acre tract, N 03°-02'-45"E, a distance of 1162.35 feet to a point under water at the TRUE POINT OF BEGINNING, passing a 5/8 inch iron rod found at 1064.60 feet.

THENCE, with the east line of the said 1.104 acre tract, N 03°-02'-45"E, a distance of 50.00 feet to a 5/8 inch iron rod set.

THENCE, with the lines of the C.C.C. & St. L. Railroad (formerly Bellefontaine & Indiana Railway Co.) (Vol. 46, Pg. 26), the following six courses:

S 86°-13'-50"E, a distance of 902.69 feet to a 5/8 inch iron rod set.

With a curve to the left, having a central angle of 11°-06'-00", a radius of 5794.65 feet, an arc length of 1122.60 feet, a chord bearing N 88°-13'-10"E, a distance of 1120.85 feet to a 5/8 inch iron rod set.

N 87°-01'-12"W, a distance of 87.37 feet to a 5/8 inch iron rod set.

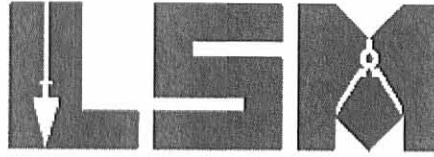
INDEXED ON MAP
3758 12-1

With a curve to the left, having a central angle of 04°-02'-33", a radius of 5779.65 feet, an arc length of 407.78 feet, a chord bearing N 81°-30'-01"E, a distance of 407.70 feet to a 5/8 inch iron rod set.

Lee Surveying and Mapping Co., Inc.

Land Surveys • Topography • Subdivisions • Construction Layout

117 N. Madriver St.
Bellefontaine OH 43311



Phone: (937) 593-7335
Fax: (937) 593-7444

N 79°-28'-45"E, a distance of 278.93 feet to a 5/8 inch iron rod set.

S 03°-03'-31"W, a distance of 51.44 feet to a 5/8 inch iron rod found.

THENCE, with the lines of the Clifford E. Kelly 83.153 acre tract (O.R. 718, Pg. 81, O.R. 897, Pg. 29), the following five courses:

S 79°-28'-45"W, a distance of 266.86 feet to a 5/8 inch iron rod found.

With a curve to the right, having a central angle of 03°-32'-07", a radius of 5829.65 feet, an arc length of 359.70 feet, a chord bearing S 81°-14'-48"W, a distance of 359.64 feet to a 5/8 inch iron rod found.

S 06°-59'-08"E, a distance of 15.00 feet to a 5/8 inch iron rod found.

With a curve to the right, having a central angle of 10°-45'-18", a radius of 5844.65 feet, an arc distance of 1097.10 feet, a chord bearing S 88°-23'-31"W, a distance of 1095.49 feet to a 5/8 inch iron rod found.

N 86°-13'-50"W, a distance of 902.06 feet to the point of beginning.

Containing 3.017 acres.

The basis for bearings is the west line of Section 4, being N 03°-04'-17"E, and all other bearings are from angles and distances measured in a field survey by Lee Surveying and Mapping Co., Inc. on November 21, 2008.



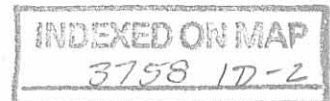
ORIGINAL STAMP IN GREEN

Description prepared by:

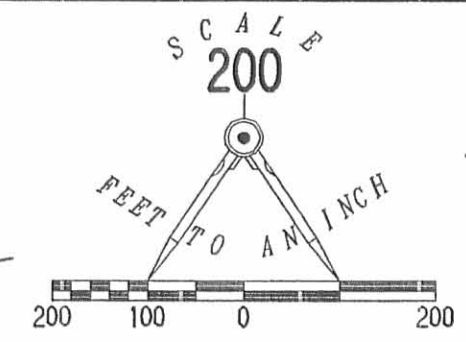
William K. Bruce

William K. Bruce
Professional Surveyor 7437
November 21, 2008,
Revised December 11, 2009

1893118REV

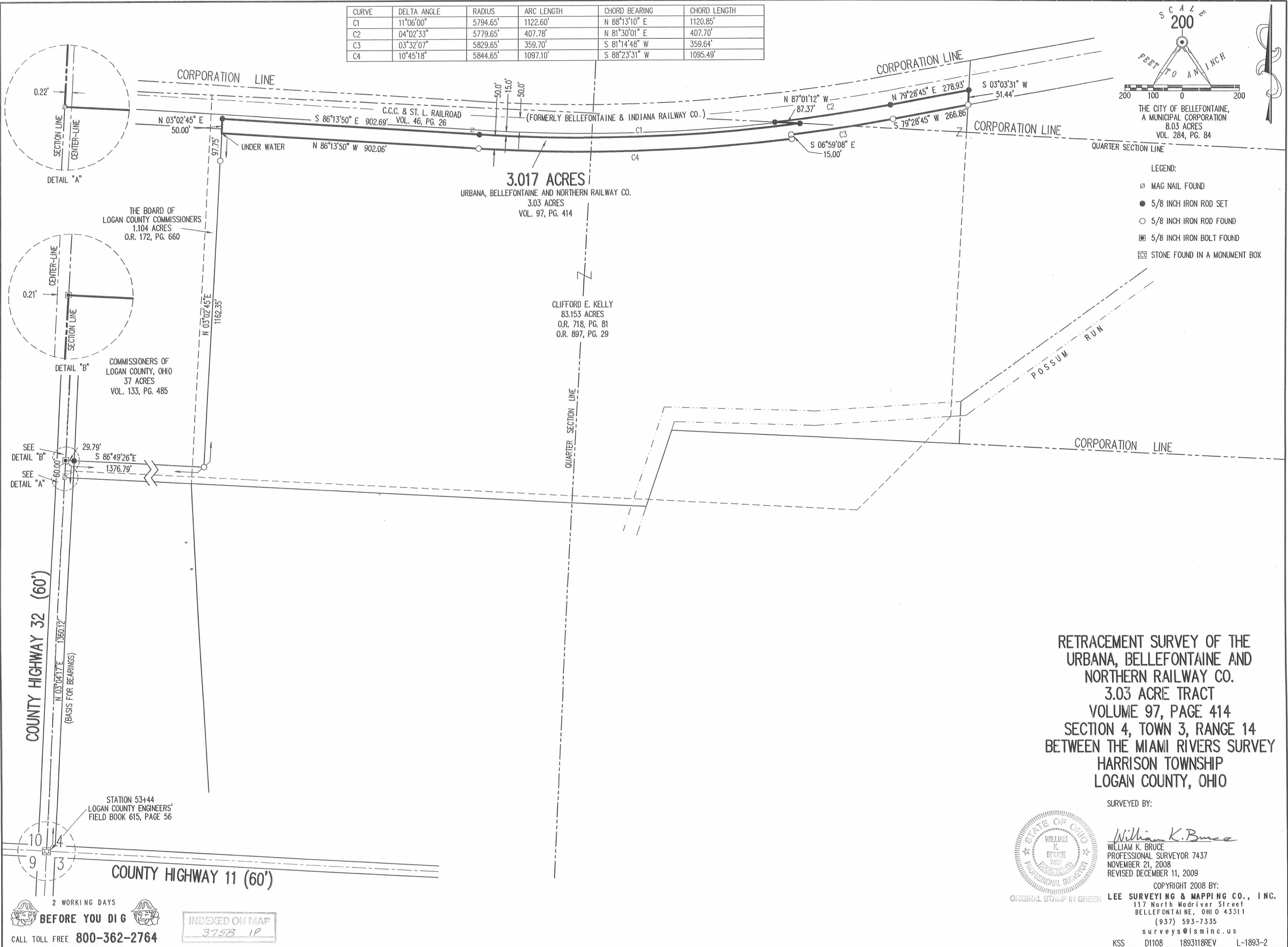


CURVE	DELTA ANGLE	RADIUS	ARC LENGTH	CHORD BEARING	CHORD LENGTH
C1	11°06'00"	5794.65'	1122.60'	N 88°13'10" E	1120.85'
C2	04°02'33"	5779.65'	407.78'	N 81°30'01" E	407.70'
C3	03°32'07"	5829.65'	359.70'	S 81°14'48" W	359.64'
C4	10°45'18"	5844.65'	1097.10'	S 88°23'31" W	1095.49'



THE CITY OF BELLEFONTAINE,
A MUNICIPAL CORPORATION
8.03 ACRES
VOL. 284, PG. 84

- LEGEND:
- ⊙ MAG NAIL FOUND
 - 5/8 INCH IRON ROD SET
 - 5/8 INCH IRON ROD FOUND
 - ⊠ 5/8 INCH IRON BOLT FOUND
 - ⊞ STONE FOUND IN A MONUMENT BOX



**RETRACEMENT SURVEY OF THE
URBANA, BELLEFONTAINE AND
NORTHERN RAILWAY CO.
3.03 ACRE TRACT
VOLUME 97, PAGE 414
SECTION 4, TOWN 3, RANGE 14
BETWEEN THE MIAMI RIVERS SURVEY
HARRISON TOWNSHIP
LOGAN COUNTY, OHIO**

SURVEYED BY:



William K. Bruce
WILLIAM K. BRUCE
PROFESSIONAL SURVEYOR 7437
NOVEMBER 21, 2008
REVISED DECEMBER 11, 2009

COPYRIGHT 2008 BY:

ORIGINAL STAMP IN GREEN

LEE SURVEYING & MAPPING CO., INC.
117 North Madriver Street
BELLEFONTAINE, OHIO 43311
(937) 593-7335
surveys@lsminc.us

KSS D1108 1893118REV L-1893-2

2 WORKING DAYS
BEFORE YOU DIG
CALL TOLL FREE 800-362-2764
OHIO UTILITIES PROTECTION SERVICE

INDEXED ON MAP
3758 1P