

FB 653

Rd #206 - Harrison Twp  
Staked 40' wide

13+19.65 Iron set (Hubs set on corners?)  
1" Bar Found laying flat - Reset  
Using Man's 6/11/78 D.L.O.

10+76 12" Vit pipe

10+00 Hubs set

5+00 Hubs set

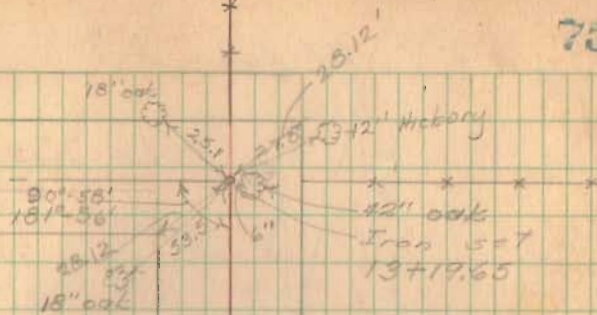
1+89 10" Corr. pipe

1+00 Hubs set

0+00 Stone



75



Party:-  
O. Kayser  
R. Lucas  
P. Haines  
W. Kayser

Monument Set 7/20/48  
Hammer

May 1946  
Monument Set 7/20/48  
Hammer

Monument Set 7/20/48

Monument Set 7/20/48

▲ - RR spike  
□ - Hub

3604

Monument Set 7/20/48





FB 653

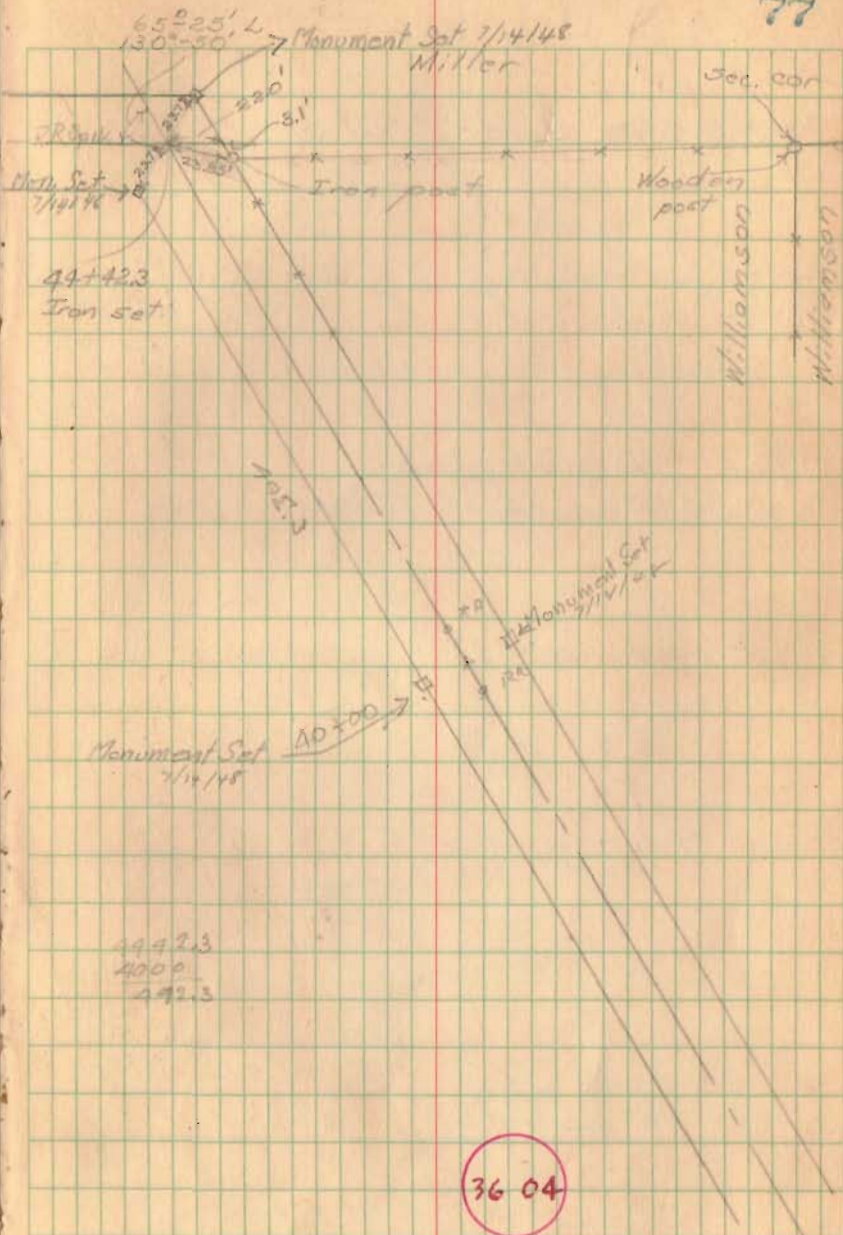
Bd 206

Mon. Set  
7/14/48  
48+00

2205'

Wooders  
Hammer  
Steel  
part  
Willomson  
Lebard

77







FB 712

Resurvey part of T.R. 206  
Harrison Twp.  
Logan Co., Ohio

AA+Al. 666 - P.I. - Fd.  $\frac{3}{16}$ "  $\phi$  iron  
bar  $\approx$  1' deep - No curve  
45°-26'-52" Lt.

1070.84'

3A+90.71 - P.T. - Fd. R.R. Spike

119.89'

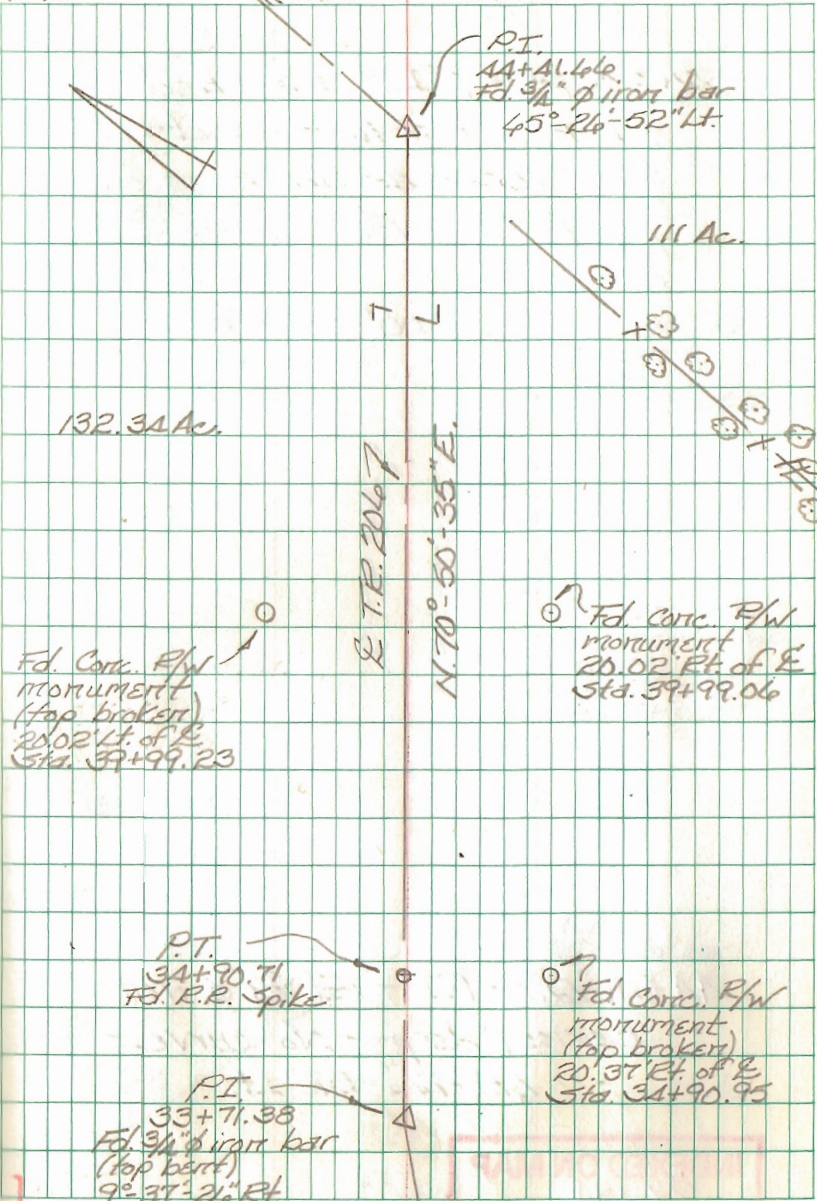
33+71.33 - P.I. - Fd.  $\frac{3}{16}$ "  $\phi$  iron bar  
(bent over) - straightened -  
shown as sta. 33+71.5 on  
pg. 76 of F.B.L. # 453.  
9°-37'-26" Rt.

INDEXED ON MAP  
3664

Simmons  
Dappert  
Dill

JUNE 08

47



FB 712

Resurvey part of T.R. 206  
Harrison Twp.  
Logan Co., Ohio

52+25.78 - P.I. - searched  
for hub - no luck - set  
3/4"  $\phi$  rebar as per notes on  
pg. 78 of F.B.K. #453. -  
170 CURVE  
90°-00'-00" Rt.

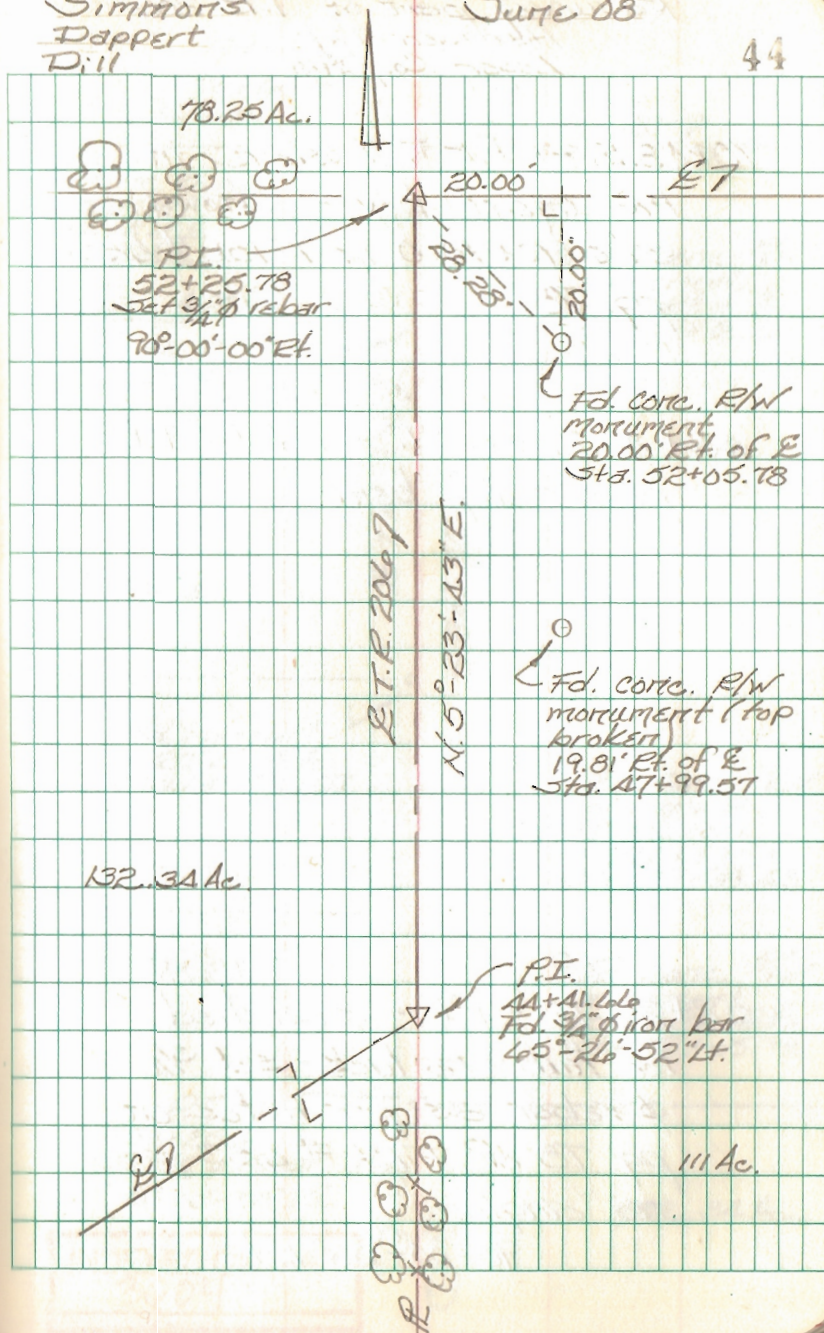
44+41.66 - P.I. - Fd. 3/4"  $\phi$  iron  
bar  $\approx$  1' deep - No curve -  
45°-26'-52" Lt.

INDEXED ON MAP  
3604

Simmons  
Dappert  
Dill

June 08

44



FB 712

Resurvey part of T.R. 206  
Harrison Twp.  
Logan Co., Ohio

70+48.18 - P.I. - Fd. stone in  
monument box - shown as  
sta. 70+70.0 in F.B.K. # 453,  
pg. 78.

66+40.21 - P.O.T. - Fd. 1/2" I.D.  
pipe - top bent.

52+25.78 - P.I. - searched  
for hub - no luck - set 3/4"  
φ rebar as per notes on  
pg. 78 of F.B.K. # 453 -  
no angle  
90°-00'-00" Rt.

Simmons  
Dappert  
Dill

June 08

45

