

Received 11/22/05 OK JML

Lee Surveying and Mapping Co., Inc.

Land Surveys • Topography • Subdivisions • Construction Layout

117 N. Madriver St.
Bellefontaine OH 43311



Phone: (937) 593-7335
Fax: (937) 593-7444

1975-2005 - 30 YEARS OF EXCELLENCE

**MAC-O-CHEEK, INC.
16.738 ACRES**

Lying in Section 18, Town 3, Range 14, Harrison Township, Logan County, Ohio.

Being out of the Mac-O-Cheek, Inc. original 166 acre tract as deeded and described in Official Record 159, Page 97, Tract VII of the Logan County Records of Deeds and being more particularly described as follows:

Beginning at a MAG nail found at the northeast corner of the southeast quarter of Section 18 on the center-line of County Highway 13.

THENCE, with the north line of the southeast quarter of Section 18 and the center-line of County Highway 13 (60 feet wide), N 84°-57'-00"W, a distance of 1652.73 feet to a MAG nail found at the TRUE POINT OF BEGINNING.

THENCE, S 4°-26'-58"W, a distance of 850.00 feet to a 5/8 inch iron rod found, passing a 5/8 inch iron rod found at 30.00 feet.

THENCE, S 84°-57'-00"E, a distance of 150.00 feet to a 5/8 inch iron rod found.

THENCE, S 4°-26'-58"W, a distance of 115.00 feet to a 5/8 inch iron rod set.

THENCE, N 84°-57'-00"W, a distance of 150.00 feet to a 5/8 inch iron rod set.

THENCE, S 4°-26'-58"W, a distance of 460.63 feet to a 5/8 inch iron rod set.

THENCE, N 84°-57'-00"W, a distance of 149.86 feet to a 5/8 inch iron rod set.

THENCE, S 79°-56'-07"W, a distance of 642.87 feet to a 5/8 inch iron rod set.

THENCE, N 4°-26'-58"E, a distance of 884.22 feet to a 5/8 inch iron rod set.

THENCE, S 84°-57'-00"E, a distance of 622.25 feet to a 5/8 inch iron rod set.

THENCE, N 4°-26'-58"E, a distance of 709.05 feet to a MAG nail set on the north line of the southeast quarter of Section 18 and the center-line of County Highway 13, passing a 5/8 inch iron rod set at 679.05 feet.

THENCE, with the north line of the southeast quarter of Section 18 and the center-line of County Highway 13, S 84°-57'-00"E, a distance of 150.00 feet to the point of beginning.

Containing 16.738 acres, of which 0.103 acre is within the highway right-of-way.

The basis for bearings is the north line of the southeast quarter of Section 18, being S 84°-57'-00"E, and all other bearings are from angles and distances measured in a field survey by Lee Surveying and Mapping Co., Inc. on November 19, 2005.

Description prepared by:

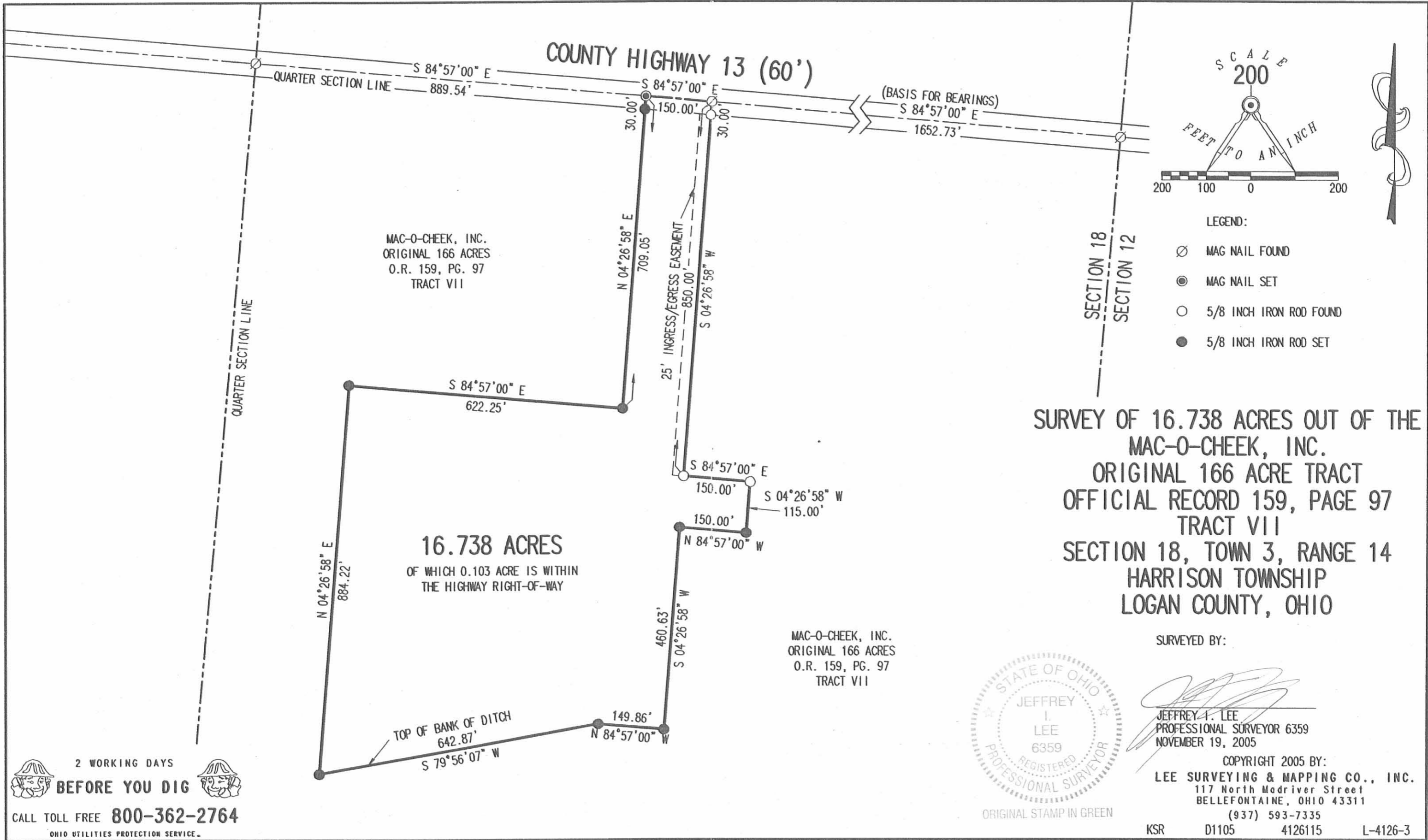


Jeffrey I. Lee
Jeffrey I. Lee
Professional Surveyor 6359
November 21, 2005

ORIGINAL STAMP IN GREEN

L-4126

INDEXED ON MAP
2813 1D



2 WORKING DAYS
BEFORE YOU DIG
CALL TOLL FREE **800-362-2764**
OHIO UTILITIES PROTECTION SERVICE.

**SURVEY OF 16.738 ACRES OUT OF THE
MAC-O-CHEEK, INC.
ORIGINAL 166 ACRE TRACT
OFFICIAL RECORD 159, PAGE 97
TRACT VII
SECTION 18, TOWN 3, RANGE 14
HARRISON TOWNSHIP
LOGAN COUNTY, OHIO**

INDEXED ON MAP
2813 IP

REC'D 10-18-05 SMM OK

Lee Surveying and Mapping Co., Inc.

Land Surveys • Topography • Subdivisions • Construction Layout

117 N. Madriver St.
Bellefontaine OH 43311



Phone: (937) 593-7335
Fax: (937) 593-7444

1975-2005 - 30 YEARS OF EXCELLENCE

**MAC-O-CHEEK, INC.
2.927 ACRES**

Lying in Section 18, Town 3, Range 14, Harrison Township, Logan County, Ohio.

Being out of the Mac-o-Cheek, Inc. original 166 acre tract as deeded and described in Official Record 159, Page 97, Tract VII of the Logan County Records of Deeds and being more particularly described as follows:

Beginning at a MAG nail found at the northeast corner of the southeast quarter of Section 18 on the center-line of County Highway 13.

THENCE, with the north line of the southeast quarter of Section 18 and the center-line of County Highway 13 (60 feet wide), N 84°-57'-00"W, a distance of 1502.73 feet to a MAG nail set at the TRUE POINT OF BEGINNING.

THENCE, S 4°-26'-58"W, a distance of 850.00 feet to a 5/8 inch iron rod set, passing a 5/8 inch iron rod set at 30.00 feet.

THENCE, N 84°-57'-00"W, a distance of 150.00 feet to a 5/8 inch iron rod set.

THENCE, N 4°-26'-58"E, a distance of 850.00 feet to a MAG nail set on the north line of the southeast quarter of Section 18 and the center-line of County Highway 13, passing a 5/8 inch iron rod set at 820.00 feet.

THENCE, with the north line of the southeast quarter of Section 18 and the center-line of County Highway 13, S 84°-57'-00"E, a distance of 150.00 feet to the point of beginning.

Containing 2.927 acres, of which 0.103 acre is within the highway right-of-way.

The basis for bearings is the north line of the southeast quarter of Section 18, being S 84°-57'-00"E, and all other bearings are from angles and distances measured in a field survey by Lee Surveying and Mapping Co., Inc. on October 12, 2005.



ORIGINAL STAMP IN GREEN

Description prepared by:

[Signature]
Jeffrey I. Lee
Professional Surveyor 6359
October 13, 2005

L-4126

INDEXED ON MAP
2013 20-1

REC'D 10-18-05 SMM/OK
Lee Surveying and Mapping Co., Inc.

Land Surveys • Topography • Subdivisions • Construction Layout

117 N. Madriver St.
Bellefontaine OH 43311



Phone: (937) 593-7335
Fax: (937) 593-7444

1975-2005 - 30 YEARS OF EXCELLENCE

MAC-O-CHEEK, INC.

25.00 FEET WIDE INGRESS/EGRESS EASEMENT

Lying in Section 18, Town 3, Range 14, Harrison Township, Logan County, Ohio.

Being a 25.00 feet wide ingress/egress easement over the Mac-o-Cheek, Inc. original 166 acre tract as deeded and described in Official Record 159, Page 97, Tract VII of the Logan County Records of Deeds and being more particularly described as follows:

Beginning at a MAG nail found at the northeast corner of the southeast quarter of Section 18 on the center-line of County Highway 13.

THENCE, with the north line of the southeast quarter of Section 18 and the center-line of County Highway 13 (60 feet wide), N 84°-57'-00"W, a distance of 1652.73 feet to a MAG nail set.

THENCE, S 4°-26'-58"W, a distance of 30.00 feet to a 5/8 inch iron rod set on the south right-of-way of County Highway 13 at the TRUE POINT OF BEGINNING.

THENCE, S 4°-26'-58"W, a distance of 820.00 feet to a 5/8 inch iron rod set.

THENCE, N 84°-57'-00"W, a distance of 25.00 feet to a point.

THENCE, N 4°-26'-58"E, a distance of 820.00 feet to a point on the south right-of-way of County Highway 13.

THENCE, with the south right-of-way of County Highway 13, S 84°-57'-00"E, a distance of 25.00 feet to the point of beginning.

The basis for bearings is the north line of the southeast quarter of Section 18, being S 84°-57'-00"E, and all other bearings are from angles and distances measured in a field survey by Lee Surveying and Mapping Co., Inc. on October 12, 2005.



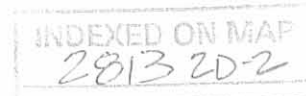
ORIGINAL STAMP IN GREEN

Description prepared by:

A handwritten signature in black ink, appearing to read 'J. Lee', written over the printed name 'Jeffrey I. Lee'.

Jeffrey I. Lee
Professional Surveyor 6359
October 13, 2005

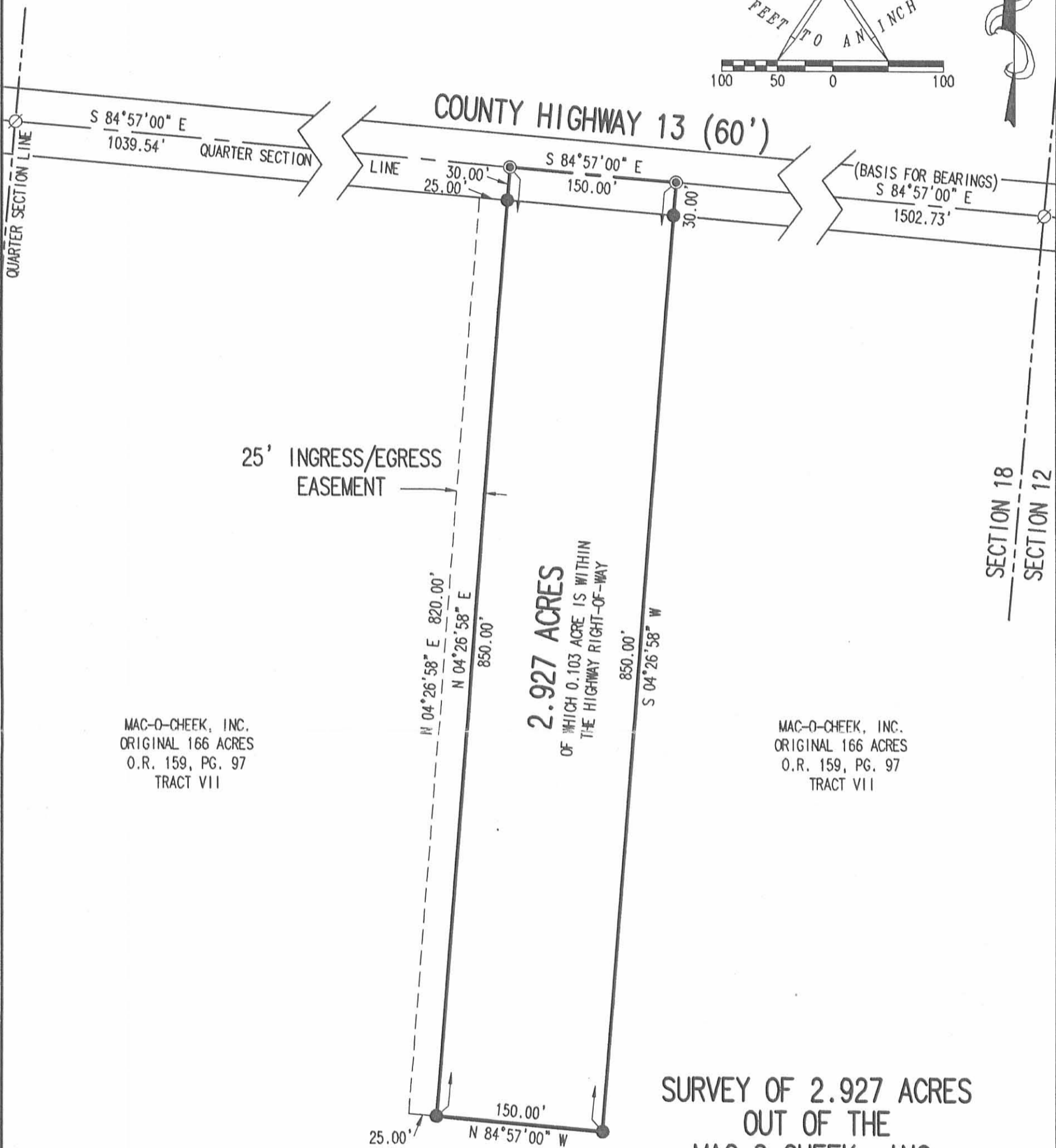
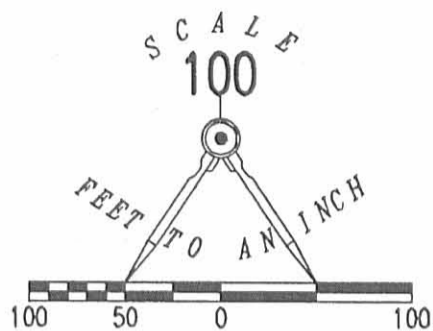
L-4126



REC'D 10-18-05 SML/OK

LEGEND:

- ⊗ MAG NAIL FOUND
- ⊙ MAG NAIL SET
- 5/8 INCH IRON ROD SET



MAC-O-CHEEK, INC.
 ORIGINAL 166 ACRES
 O.R. 159, PG. 97
 TRACT VII

MAC-O-CHEEK, INC.
 ORIGINAL 166 ACRES
 O.R. 159, PG. 97
 TRACT VII

2.927 ACRES
 OF WHICH 0.103 ACRE IS WITHIN
 THE HIGHWAY RIGHT-OF-WAY

**SURVEY OF 2.927 ACRES
 OUT OF THE
 MAC-O-CHEEK, INC.
 ORIGINAL 166 ACRE TRACT
 OFFICIAL RECORD 159, PAGE 97
 TRACT VII
 SECTION 18, TOWN 3, RANGE 14
 HARRISON TOWNSHIP
 LOGAN COUNTY, OHIO**

SURVEYED BY:



[Signature]
 JEFFREY I. LEE
 PROFESSIONAL SURVEYOR 6359
 OCTOBER 12, 2005

COPYRIGHT 2005 BY:
LEE SURVEYING & MAPPING CO., INC.
 117 North Madriver Street
 BELLEFONTAINE, OHIO 43311
 (937) 593-7335

2 WORKING DAYS
BEFORE YOU DIG
 CALL TOLL FREE **800-362-2764**
 OHIO UTILITIES PROTECTION SERVICE.

INDEXED ON MAP
 2013 2P

ORIGINAL STAMP IN GREEN

KSR D1005 4126095A L-4126-3

HILL SURVEY

Sec. 18, T-3, R-14
Harrison Township

May 17, 1958

The following described real estate situated in Harrison Township, Logan County, Ohio and being part of the southeast 1/4 of Section 18, Town 3, Range 14 of the Between the Miami Rivers Survey and more particularly described as follows:

Commencing in the center of County Highway No. 13 of the northeast corner of said southeast quarter section, said point being Station 66+66 as shown in the Logan County Engineers Field Book No. 598, page 41, said point also being the northwest corner of Levie E. McPherson's 156.00 acre tract; thence with the center line of said County Highway No. 13, N. 87°-57' W. 1225.6 feet to an iron pin (Sta. 78+91.6), said pin being the beginning point of this description; thence S. 1°-45' W. 945.0 feet to a stake; thence N. 87°-45' W. 425.0 feet to an iron pin in the east line of a 26 foot lane; thence with the east line of said lane N. 1°-45' E. 83.0 feet to the southwest corner of Maurice M. Littlejohn's 1.00 acre tract; thence with the south line of said tract S. 88°-15' E. 145.2 feet to the southeast corner of said tract; thence with the east line of said 1.00 acre tract N. 1°-45' E. 300.0 feet to the northeast corner of said tract; thence with the north line of said 1.00 acre tract N. 88°-15' W. 145.2 feet to the northwest corner of said tract and in the east line of said 26 foot lane; thence with said east line N. 1°-45' E. 562.0 feet to an iron pin in the center of said County Highway No. 13 (Sta. 83+16.6) said pin being S. 87°-57' E. 13.0 feet from an iron pin in the center of said lane; thence with the center line of said County Highway No. 13 S. 87°-57' E. 425.0 feet to the place of beginning.

Containing 8.22 acres more or less.

on Plat Book
2813 3D
INDEXED ON MAP

Hill Survey
Harrison Twp.
Sec. 18, T-3, R-14

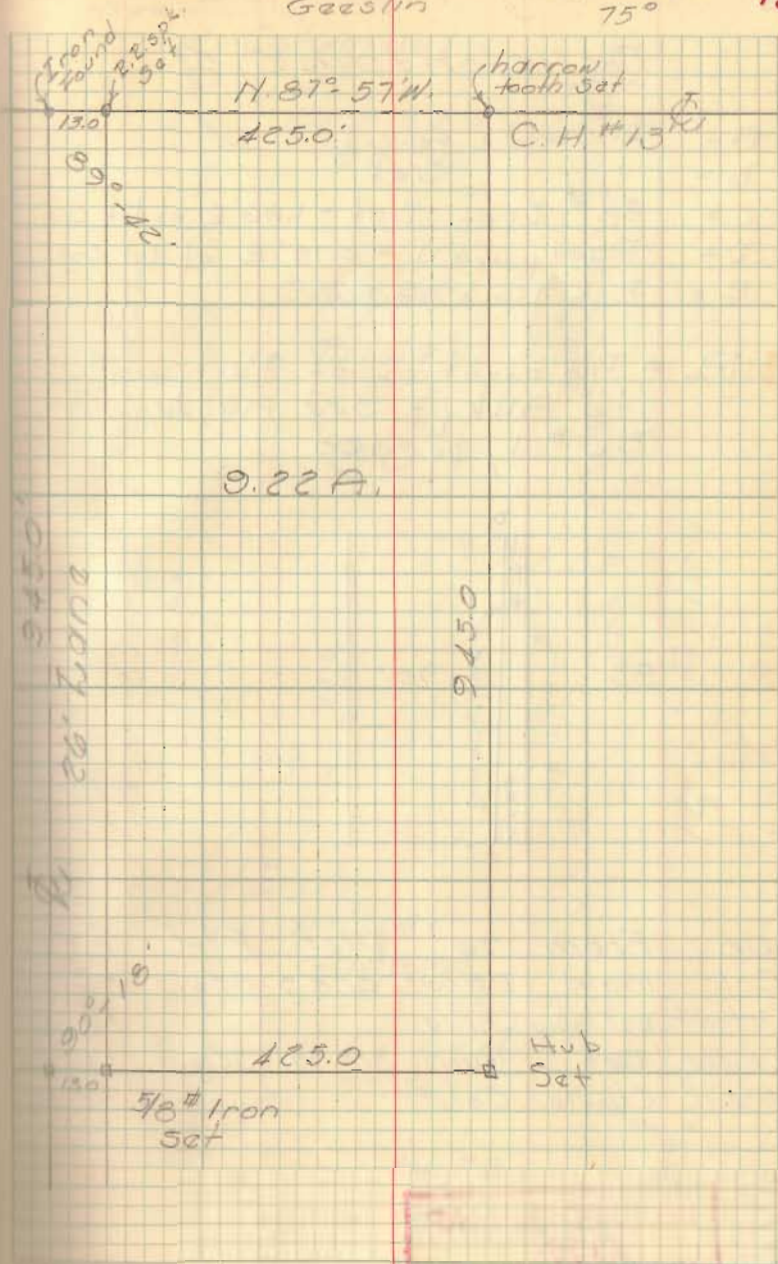
See deed Vol. 215 pg. 264

See Co. Eng. F.D. # 598, pg. 41
for survey of C.H. # 13

Dodson
Gaeslin

5/17/58
75°

12

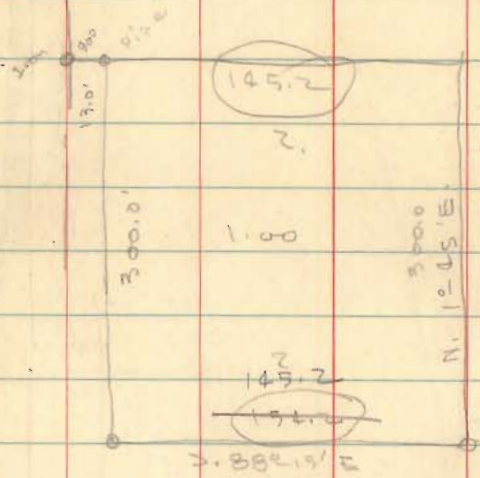


INDEXED ON MAP
2813

Hill Survey

Iron N. 87-57' W. 1663.6

S. 10-45' W. 562.0
 Decd Vol 215 pg. 260



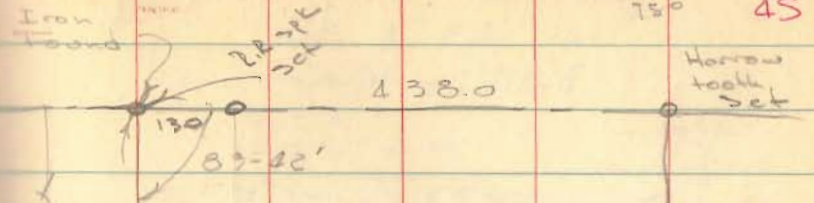
425
 13
 412
 438

945
 425
 4725
 1890
 3780
 201,625

87-57
 1-45
 89-42

179-60
 89-12
 90-18
 435000

9/17/58
 750 45



438.0

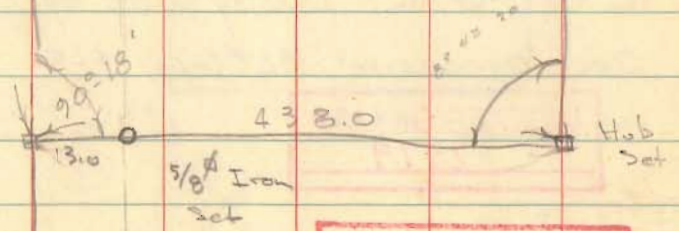
130
 89-42'

2 1/8" 3/4" Set

Harrow
 tool
 Set

Dk # 3 pg 12

945.0



438.0

13.0

5/8" Iron
 Set

Hub
 Set

Hub Set
 that loop

INDEXED ON MAP
 2813