

Road 200
Harrison - Liberty - Lake - Union

30' Sta. 0+00 To 51+79.7

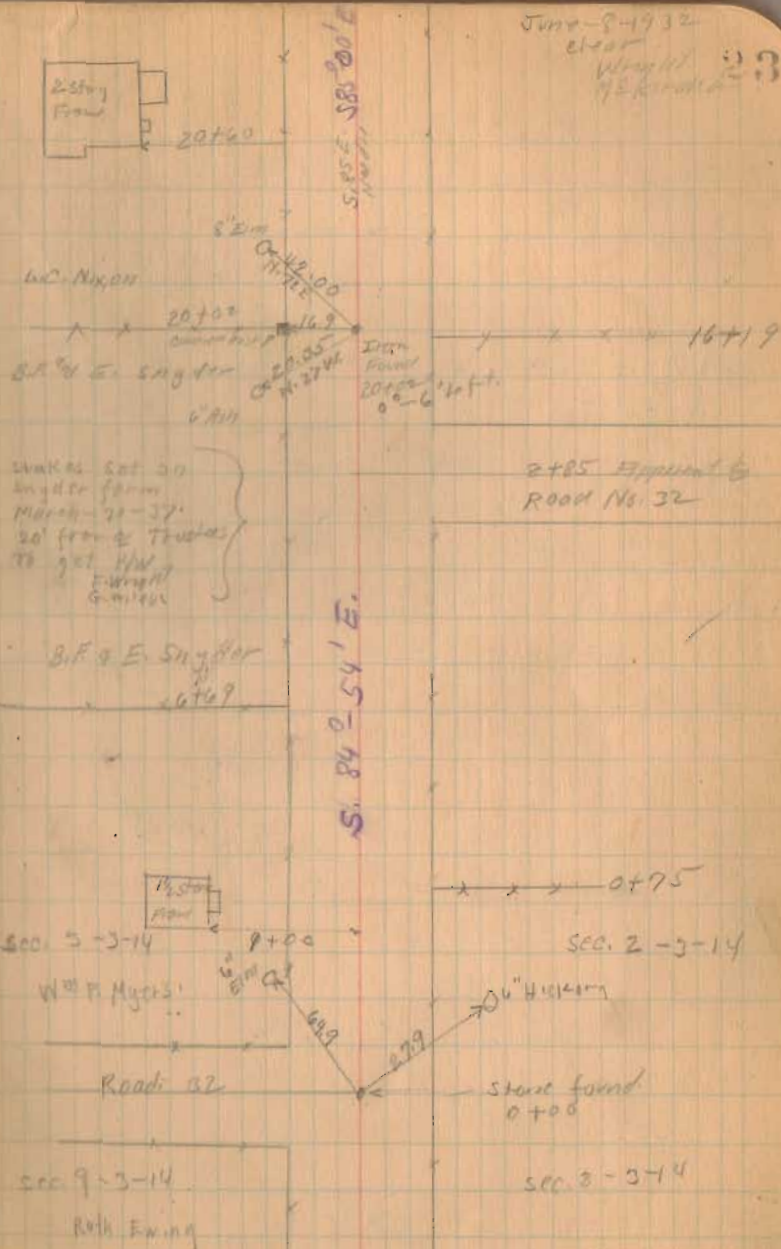
35' Sta. 51+79.7 To 16+19
Road Record 1 Page 66

SEE PAGES 61-62 FOR
ROAD 200 NEAR
ROAD 199

1384
INDEXED ON MAP

June 8-1932

clear
Wright
192
23



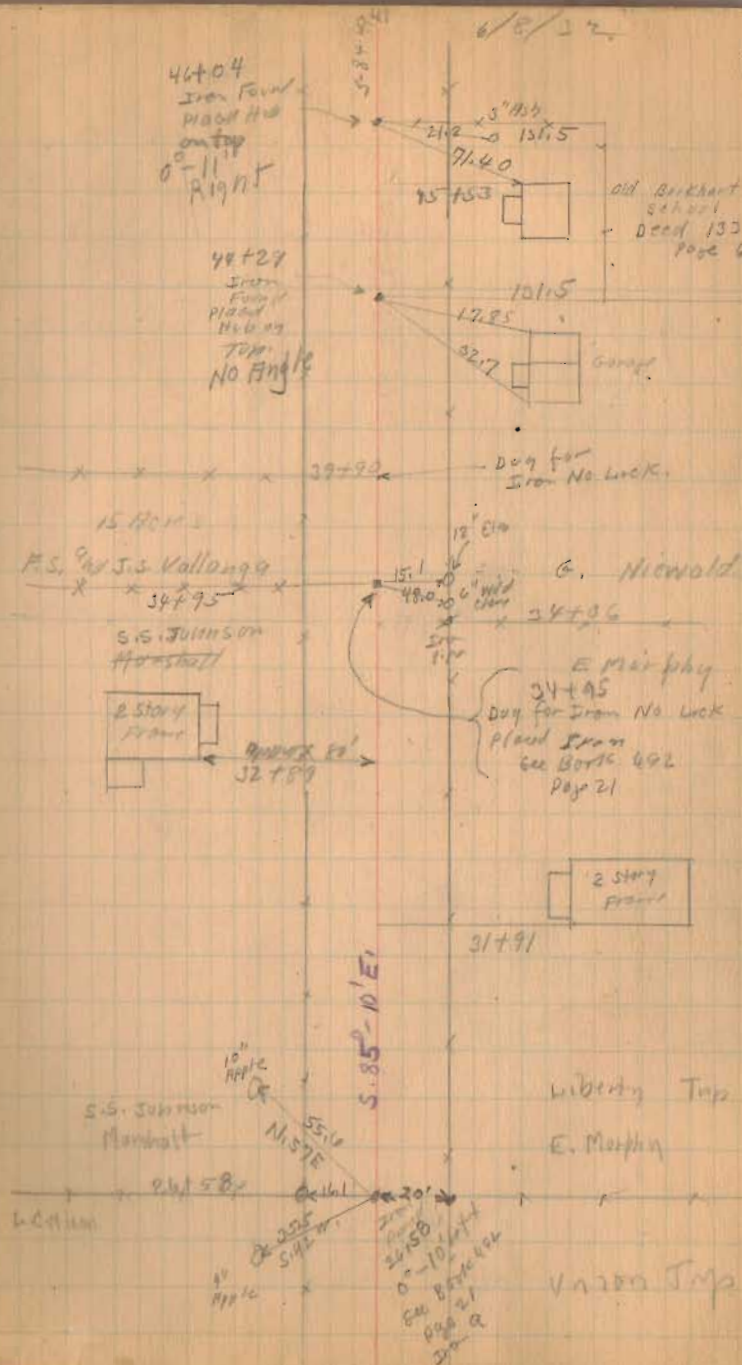
See Pages 77-78-79 for Proposed Title

Road 200

200

1384

INDEXED ON MAP



Road. 200

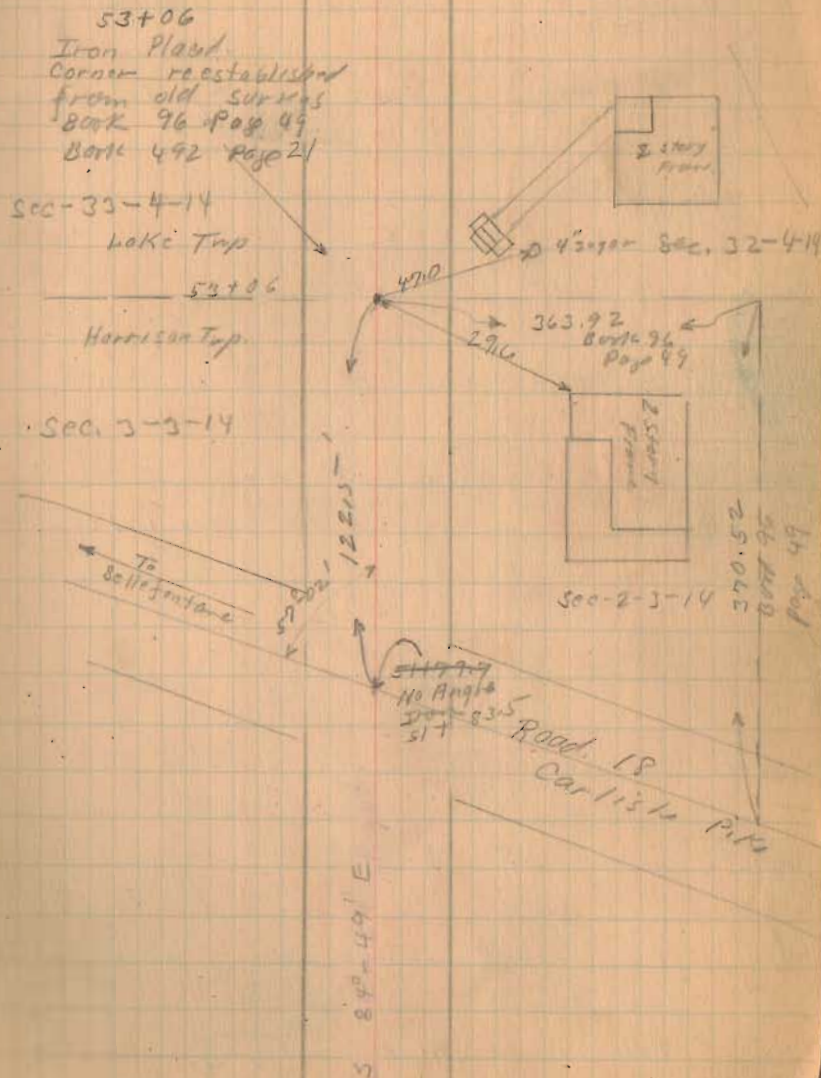
Continued in Book 606. Pages

53706
17221.5
51783.5

1384
INDEXED ON MAP

6/8/32

25



Road 200
Road 198

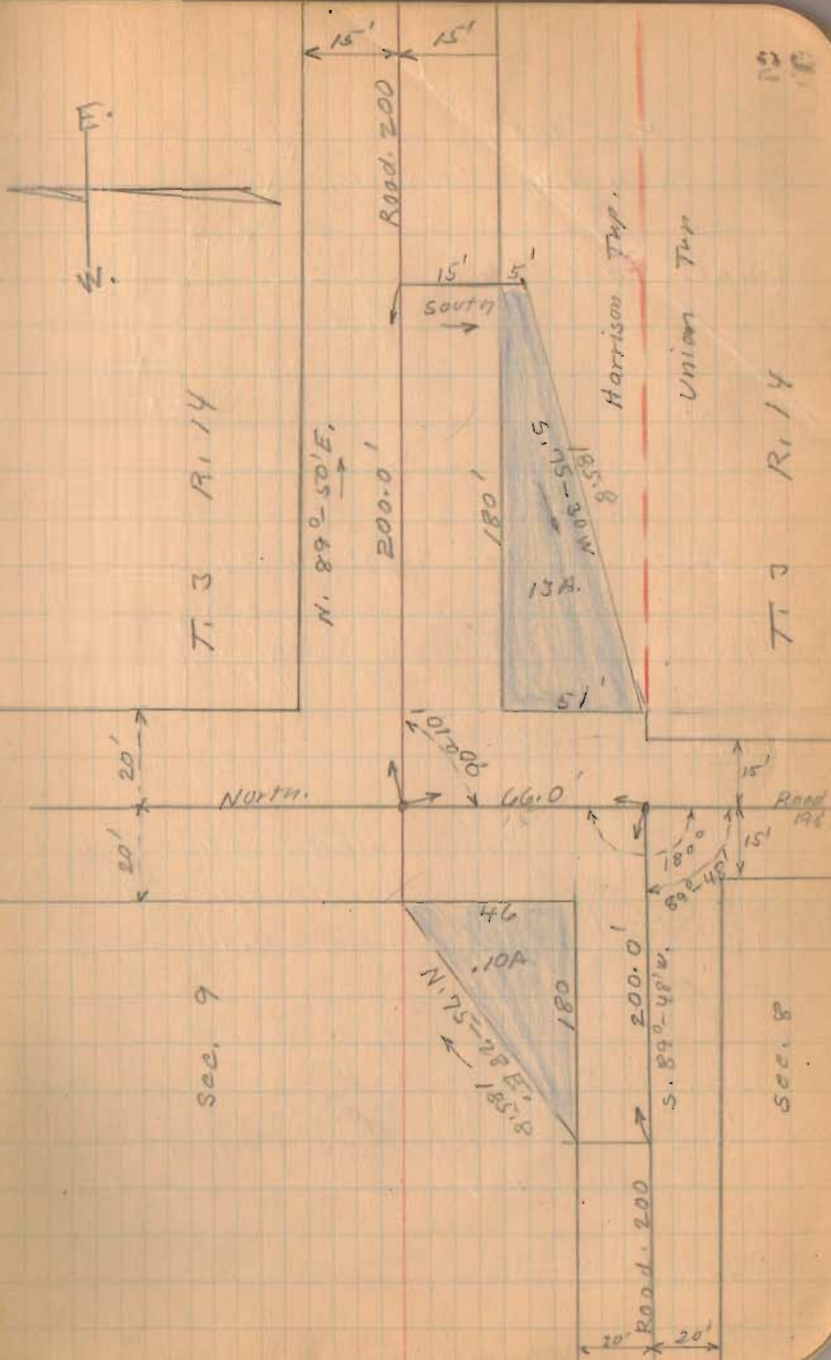
see page 61

Road 198

1384

INDEXED ON MAP

Descriptions of these in Road 200 File -



Road. 200
Harrison Twp

stakes Placed 15' from E for 30' Road

stakes Placed from jog at
Downing S.E. cor To top
of Hill near Lane
No Distances Taken

See Reed Road Book 49
see Map Road Record 2
Page 511
see Book 597 Page 61

See pages 23 To 25 for
Road 200 East To
Cartise Pit

1384

INDEXED ON MAP

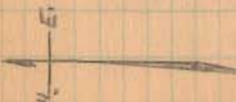
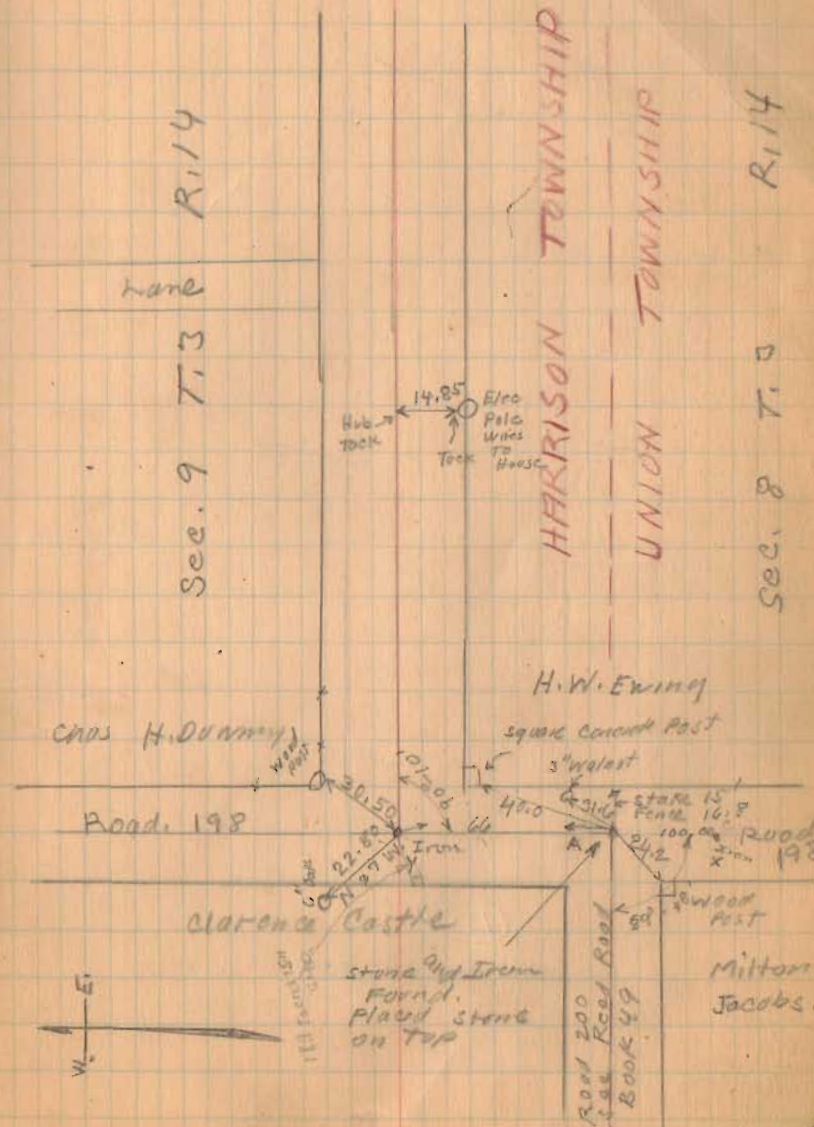
XAY Straight Line 180°

AX = 100'

AY = 66'

Nov. 9, 1933
Cold Wind
Snowing
Wright
M. Miller

61

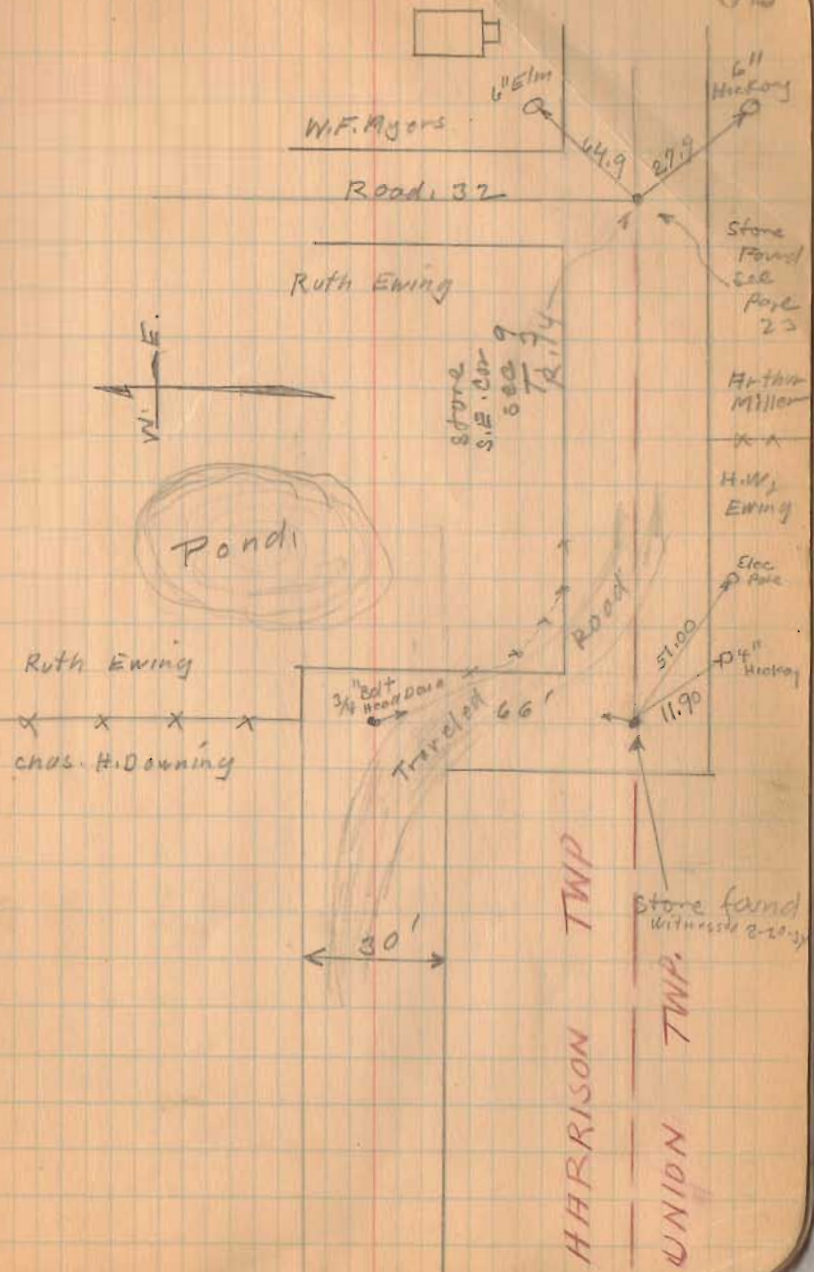


Road, 200

(1384)
INDEXED ON MAP

11-9-32

62



Road 200

Continued from Book 561 Page 25

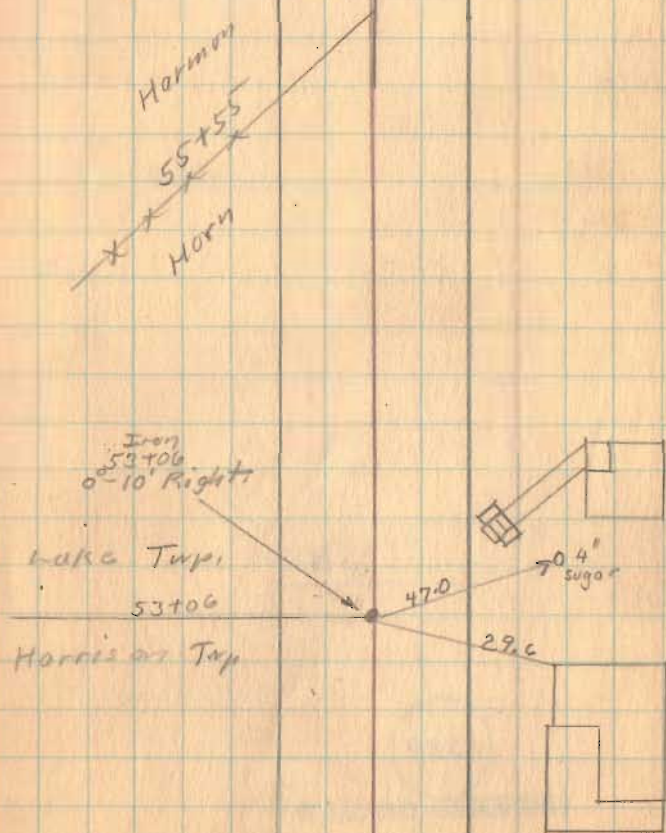
35' Carlisle Pike to S.H. 189

staked 40' Trusse to get
Right-of-way.

1384

INDEXED ON MAP

March 28, 1938. 5
New day
F. Wright
G. Wilcox
Bob Kinnard
Don Hamilton



Road 200

Lyle

Harmon

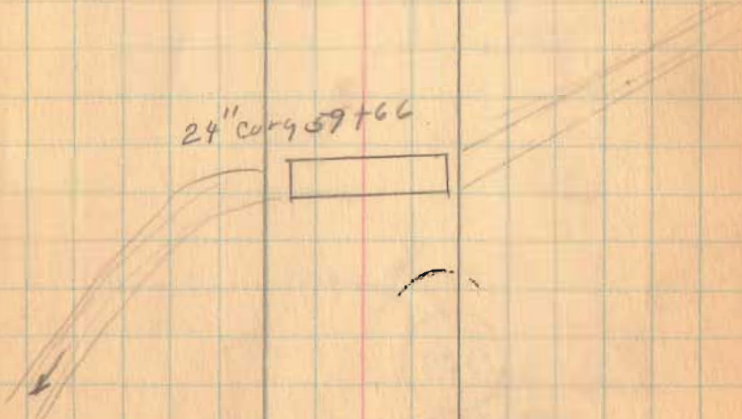
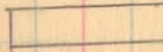
x x 66+34

x 66+23

Harmon

Harmon

24" corr 59+66



1384

INDEXED ON MAP

1-10-39

G. Wilgus
A. Phillips
J. Davis
A. F. ...

Stakes set 20' R. & 20' L.

Road. 200

77+00

76+00

75+00

74+00

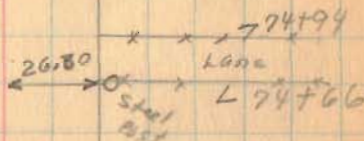
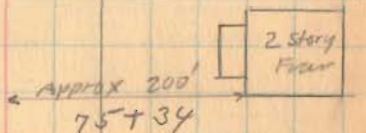
73+00

1384

INDEXED ON MAP

3-28-38

75+77'



74+00
Division
of maintenance

Meet
Hub

20' Meet
Hub

x 72+87

Harmon's

HUB

72+66
0° 25' Right



staked 1-10-39

Road 200

92+00 No Stakes

82+18
81+91.6
26.4

82+18
81+90.7
27.3

81+00

82+18
81+87.4
30.4

80+00

79+00

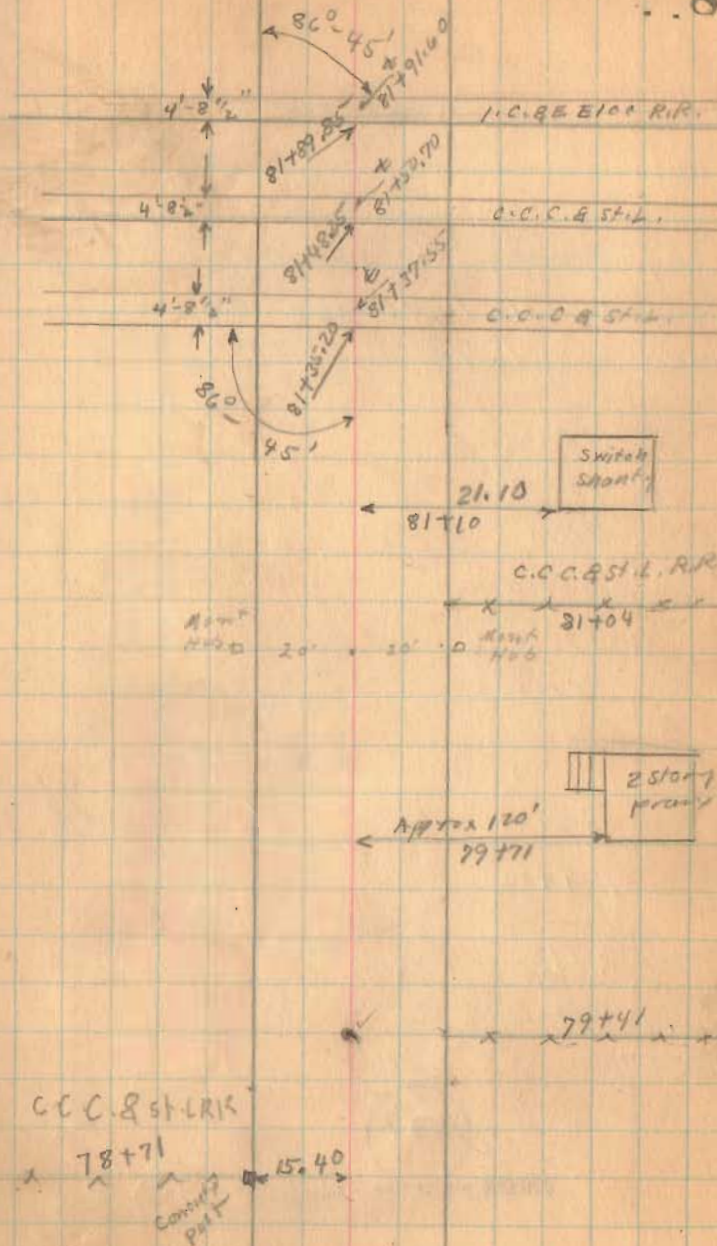
1384

INDEXED ON MAP

78+00

3-28-38

8



Staked 1-10-38

Road 200

Length 9386 Feet.
 Length 1.77765 Miles
 Length 1.78 Miles

98400

92400

91400

90400

89400

88400

87400

86400

85400

84400

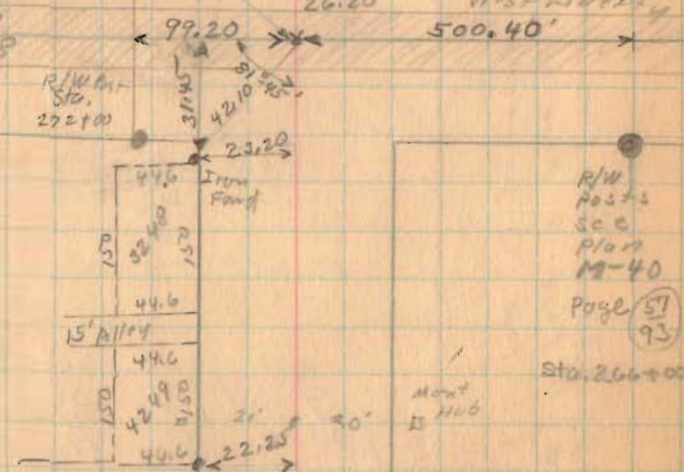
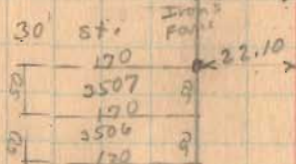
83400

1384

INDEXED ON MAP

82+18

Clark's Park Allotment



R/W Post 3 Sec 40

Page 57 93

Sta. 266+00

82+70

C.C.C. & St. L.

82+18 C.C.C. & St. L. RR.

1" Iron 3-1-52

3-28-38

9

8-25-15

APPROVED

T.R. 200 VACATION

The following described part of Township Road No. 200 to be petitioned for vacation being a 40 foot wide strip of ground located between the present East right of way line of Logan County Road No. 18 and the extended South right of way line of relocated Township Road No. 200 as shown on page 10 and 11 of 1972 C.R. 18 right of way plans X-18 B on file in the Logan County Engineers Office. Said part of T.R. 200 is situated in the following sections:

Section 2, Town 3, Range 14 B.M.R.S.
Section 3, Town 3, Range 14 B.M.R.S.
Section 32, Town 4, Range 14 B.M.R.S.
Section 33, Town 4, Range 14 B.M.R.S.

And is part of the following townships:

Harrison Township
Lake Township
Liberty Township

Logan County, Ohio and is more particularly described as follows:

Beginning for reference at a 1 inch diameter iron bar found on the center line of C.R. 18. Said iron bar is shown as being P.C. station 84+75.97 on page 13 of aforesaid 1972 C.R. 18 right of way plans (X-18 B).

Thence with the centerline of C.R. 18, S. $40^{\circ}-26'-57''$ W., 1426.67 feet to a point on the centerline of C.R. 18. Said point being C.R. 18 centerline station 70+49.30.

Thence perpendicular to the centerline of C.R. 18, S. $49^{\circ}-33'-03''$ E., 31.53 feet to a point on the East right of way line of C.R. 18. Said point being the intersection of the East right of way line of C.R. 18 with the North right of way line of old T.R. 200 and is the true point of beginning for this vacation description.

Thence with the North right of way line of old T.R. 200, the following two courses:

- 1.) S. $85^{\circ}-46'-36''$ E., 64.09 feet to a point.
- 2.) S. $85^{\circ}-24'-39''$ E., 192.52 feet to a point on the South right of way line of relocated T.R. 200. Said line passes through the West line of Lake Township, the West line of Sec. 33, T. 4, R. 14, the East line of Harrison Township, and the East line of Sec. 3, T. 3, R. 14, at 0.03 feet.

Thence with the South right of way line of relocated T.R. 200 extended, S. $40^{\circ}-13'-57''$ E., 56.39 feet to a point on the South right of way line of old T.R. 200.

Thence with the South right of way line of old T.R. 200, the following two courses:

- 1.) N. $85^{\circ}-24'-39''$ W., 232.14 feet to a point.
- 2.) N. $85^{\circ}-46'-36''$ W., 91.45 feet to a point on the East right of way line of C.R. 18. Said line passes through the West line of Sec. 32, T. 4, R. 14 and the East line of Sec. 2, T. 3, R. 14 at 0.35 feet.

Thence with the East right of way line of C.R. 18, the following three courses:

- 1.) N. $38^{\circ}-41'-54''$ E., 3.08 feet to a point.
- 2.) N. $38^{\circ}-41'-44''$ E., 9.80 feet to a point.

INDEXED ON MAP

1384 101

3.) N. $38^{\circ}-43'-39''$ E., 35.65 feet to the point of beginning.

The above described part of old T.R. 200 petitioned for vacation encompasses 0.266 acre more or less. The right of way width for this old part of T.R. 200 being 40 feet (Commissioners Journal 1-A, pg. 108).

Acreage breakdown is as follows:

Section 2, Town 3, Range 14 = 0.039 Acre
Section 3, Town 3, Range 14 = 0.032 Acre
Section 32, Town 4, Range 14 = 0.102 Acre
Section 33, Town 4, Range 14 = 0.093 Acre

Harrison Township = 0.032 Acre
Lake Township = 0.093 Acre
Liberty Township = 0.141 Acre

Basis of bearing being the centerline of C.R. 18 (N. $40^{\circ}-26'-57''$ E.) which was obtained using state plane coordinates. All other angles and distances were measured in the field.

This vacation description was prepared from an actual field survey performed by the Logan County Engineer's Office in May 2015.



Curtis D. Dill

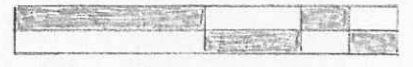
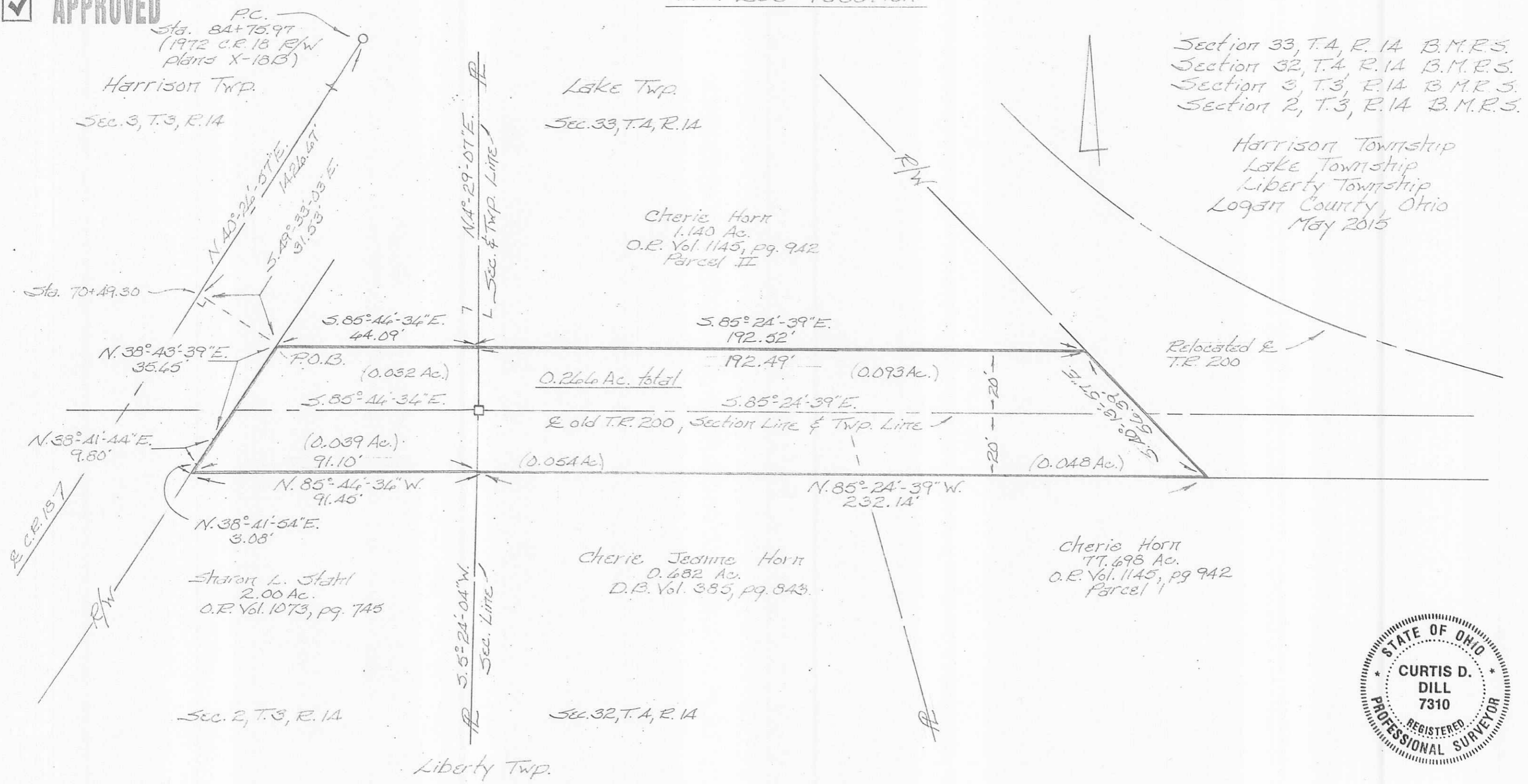
Curtis D. Dill
Deputy Surveyor
Logan County Engineer's Office
Registered Surveyor No. 7310

INDEXED ON MAP
1384 1D-1

8-25-15

APPROVED

T.R. 200 Vacation



Scale: 1" = 30'

- Legend**
- = 1" diameter iron bar found P.C. Station 84+75.97
 - = Resurvey monument found in monument box (R-2660)

INDEXED ON MAP
1384 1P

Basis of bearing being the centerline of C.R. 18 (N. 40° 24' 57" E.) which was obtained using state plane coordinates. All other angles and distances were measured in the field.

This vacation plat was prepared from an actual field survey performed by the Logan County Engineers Office in May 2015.



Curtis D. Dill
 Curtis D. Dill
 Deputy Surveyor
 Logan Co. Engineers Office
 Registered Surveyor No. 7310