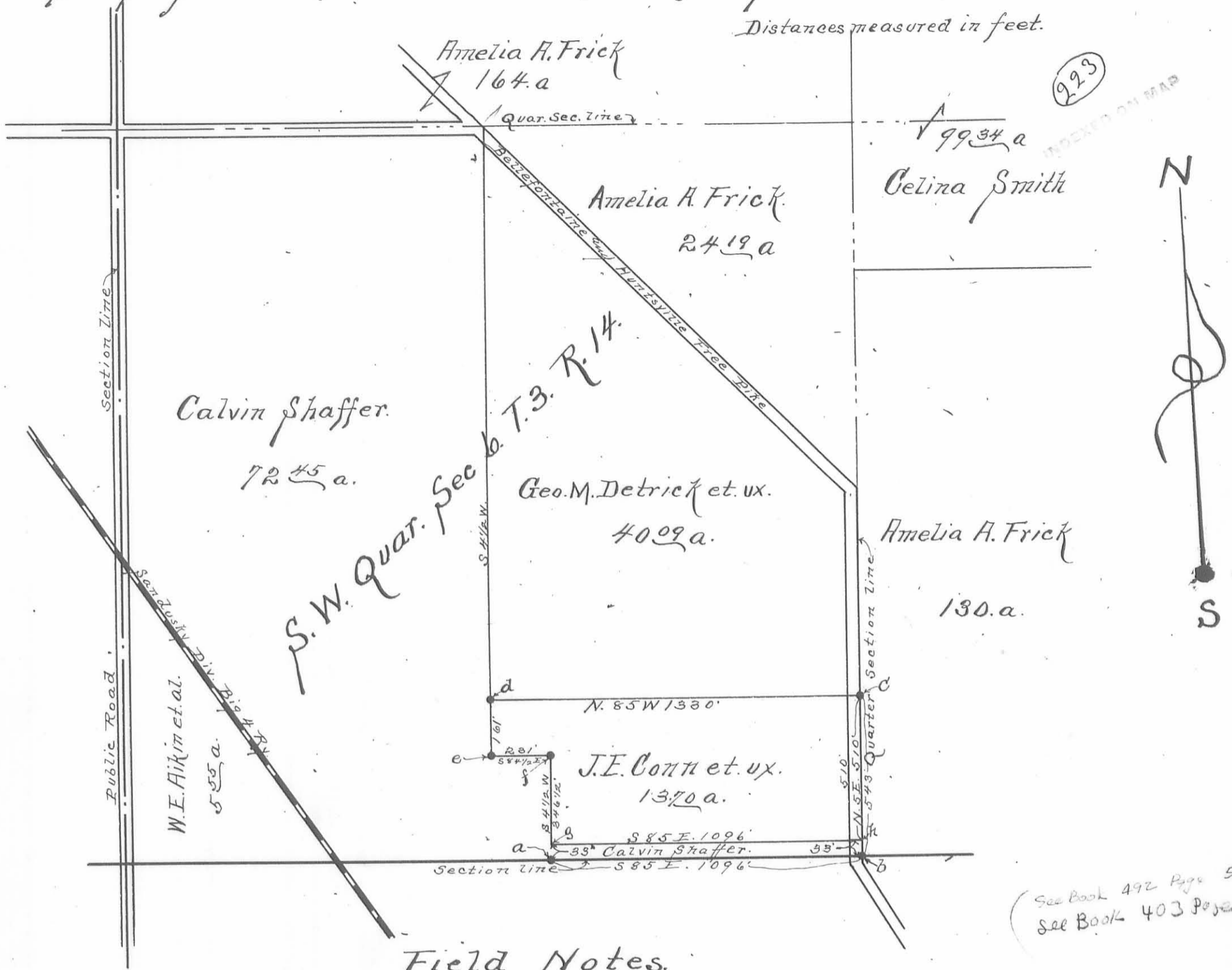


Surveyed for Geo. M. Detrick. Part of S.W. Quar. Sec 6. T.3. R.14.

Distances measured in feet.



Field Notes.

a = Old stone in sec. line. b = Stone, 20"x14"x8". S.E. cor. quar. sec.
 c = stone, 12"x12"x10" in quar sec line. d = stone, 16"x9"x7"
 e = stone, old corner. f = stone, old corner. g = post (point) in line af, 33' N. of sec. line
 h = post (point) in quar. sec. line, 33' N. of S.E. cor. of S.W. quar. Sec 6. T.3 R.14.
 a to b = S 85 E, with S. line of sec. 1096. b to c = N. 5 E. 543'.
 c to d = N. 85 W. 1330. d to e = S 4 1/2 W. 161. e to f = S 84 1/2 E. 231
 f to g = S. 4 1/2 W. 346 1/2 g to h = S 85 E. 1096. f to a = 379 1/2'
 Stones at b, c. and d. planted by me on this survey.

Surveyed as shown above Jan 28th 1914

S. A. Buchanan
 Surveyor.