

McMORRAN'S 1ST ADDITION

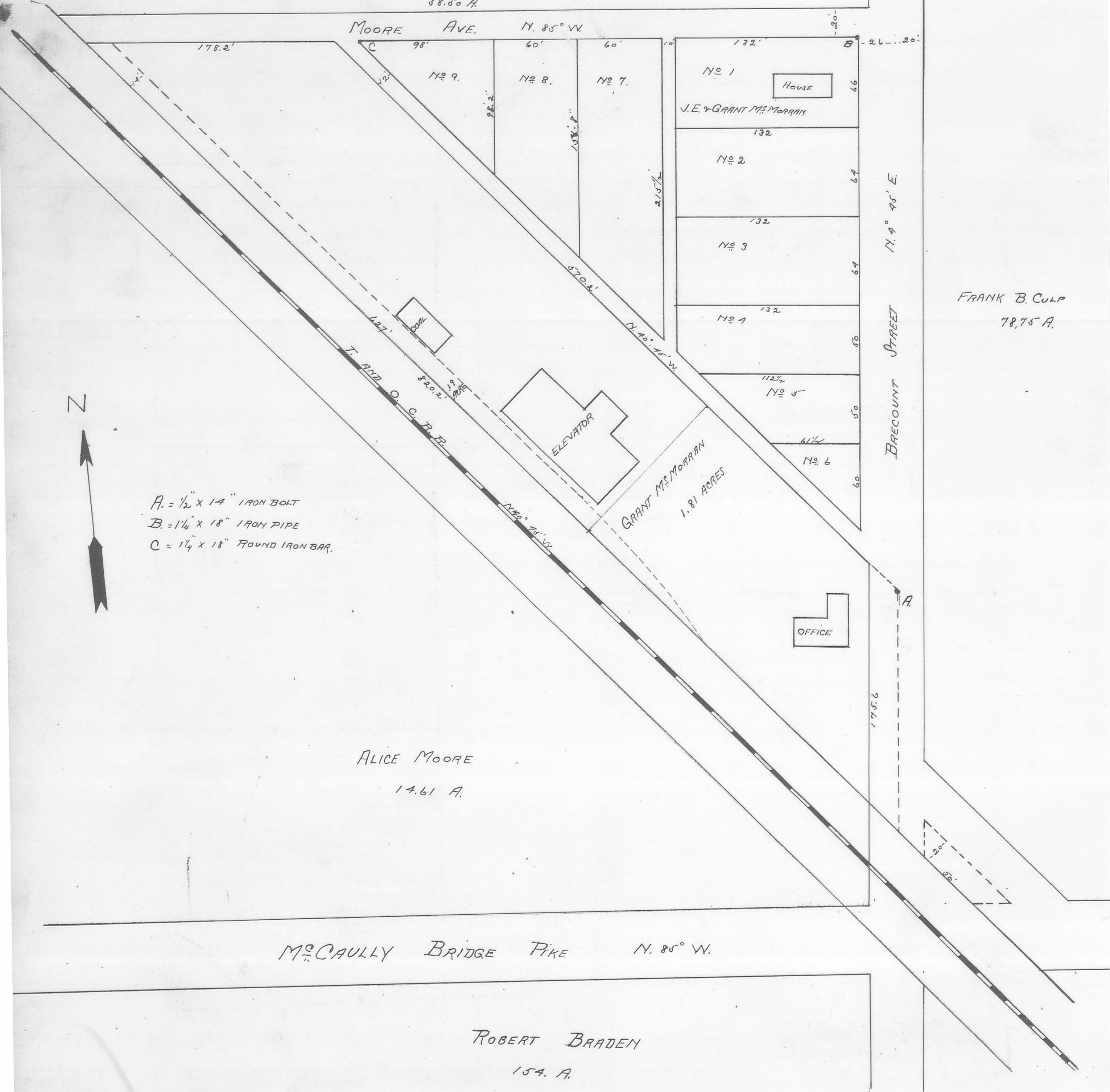
TO THE
VILLAGE OF McMORRAN

SEC. 30 T. 3 R. 14 HARRISON TP
SCALE: 1 INCH = 50 FT.

(173)
INDEXED ON MAP

Surveyed Sept., 1910, By O. C. Richey Asst. Co. Surveyor.

DENNIS MOORE
58.50 A.



A. = 1/2" x 14" IRON BOLT
 B. = 1 1/4" x 18" IRON PIPE
 C. = 1 1/4" x 18" FOUND IRON BAR.

FRANK B. CULP
78.75 A.

ALICE MOORE
14.61 A.

ROBERT BRADEN
154. A.