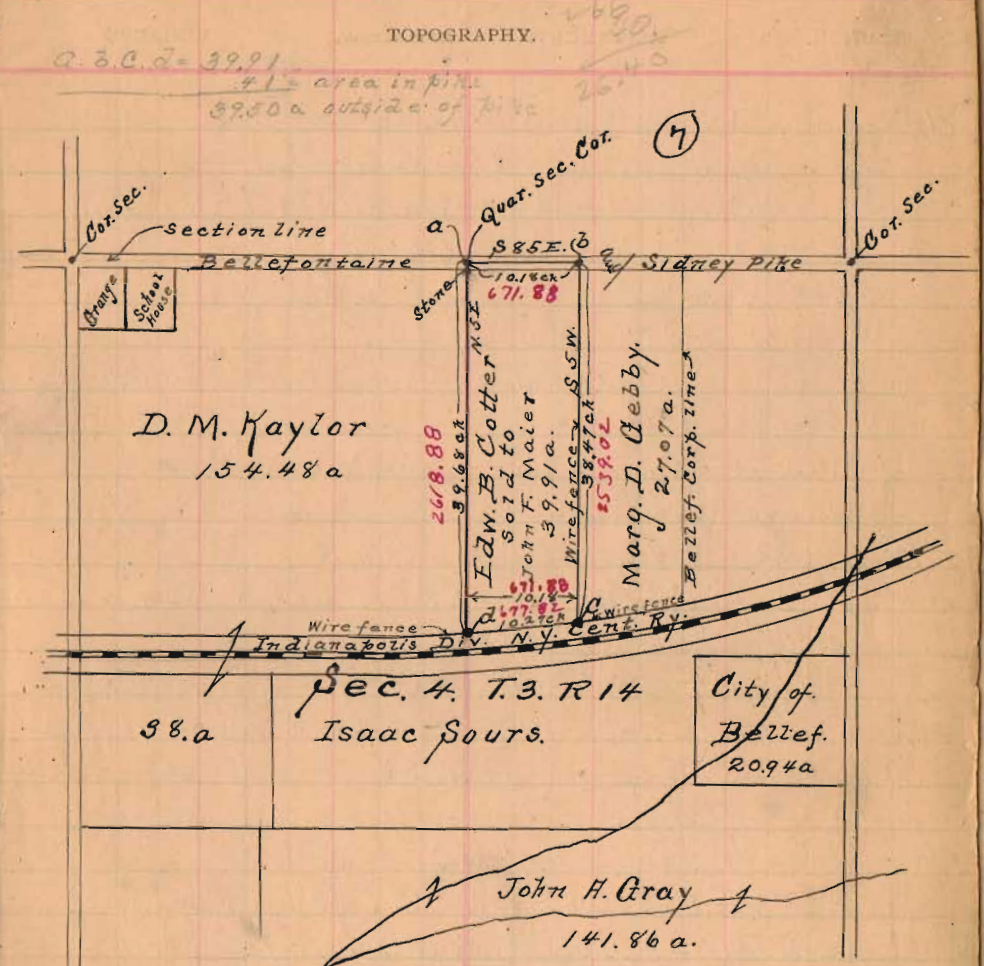


Edm. B. Cotter Survey March 17th 1914
 Part N.E. 1/4 Sec. 4, T. 3, R. 14

STATION.	ALIGNMENT.	DEFLECTION.	REMARKS
	NW cor. NE 1/4 Sec 4, T. 3, R. 14, E.		
(1)	Start at post cent Sidney Pike, NW cor. Cotter & NE cor. Kaylor		And 26 1/2 ft. along. Then in with cent pike. S 85 E
	at 484.44 ch pass line		Murphy & J. B. Kaylor
	at 671.88 ch. S 85 E		Edm. B. Cotter & NW cor. M. B. Gully
	Wit. or E. stone for 1 S T S 2 1/4 W. 115 1/4 links	76.06	
	Elm 36" S 70 1/2 W. 118 lks. Red Elm 18" N 34 1/2 W 84 1/2 lks.	77.88	55.77
(2)	Start cent pike at 10.18 ch of (1)	671.88	
	Then in with wire fence & line Cotter & W. line Gully		
	S 5 W at 7 links on fence S. side pike	26.40	
	at 2539.02 ch. pass fence of Ry. Right of Way Big & Big.	2539.02	
	at 2590.50 ch. cut by track. N. W. corner Post.	2590.50	
	Wit. W. Walnut 4" di. N. 34 W. 13 links } at 38.47 ch	8.58	
	" W. Walnut 5" di. N. 4 3/4 E 32 1/2 "	26.45	
(3)	Start at 38.47 ch of (2) - S 85 E Cotter.	2539.02	
	Then in S 88 W. 10.25 to 397 & Cotter at wire fence N. side Ry. R/W	676.50	
	at 132.0 ch. N. of wire fence left = 8.4 feet. At 4 ch. left 11.7 feet	132.0	26.40
	" 6 " " " = 11.7 feet At 8 ch. " 8.5 "	528.0	
	Measure along wire fence N. side Ry. Right of Way		
	from S 85 E Cotter 38.47 ch of (2) To S 88 W Cotter on curve	2539.02	
	and S line of Cotter & W. line Ry. R/W = 10.27 ch.	677.8	
	Wit. S 88 W Cotter stake at wire fence of Shil. track 20 links	13.20	
(4)	Start at stake S 88 W Cotter = 10.27 of (3)	677.8	
	Then in S 85 E		
	at 1524.62 ch. wire fence 12.2 ft East of land line	1524.62	
	" at 2592.40 ch. wire fence 12.2 ft East of land line	2592.40	
	" at 2592.40 ch. stone in wire fence	2592.40	
	" at 2618.88 ch. stone in wire fence	2618.88	
	" at 37.68 ch. cut pike and NW cor. Cotter	37.68	

Plat of Cotter Survey Mar. 17th 1914
 Stationers, St. Louis, Mo.



Field Notes.

- a - stone in 1/4 sec line. 40 links S. of cent. pike & Sec line.
- b - post in sec. line. Wit. N.E. cor. stone 1 S.F. house S 28 1/4 W 115 1/4 lks. 76.06
- c - Elm 36" di S 70 1/2 W 118 lks. & Red Elm 18" N 34 1/2 W 84 1/2 lks. 77.88 55.77
- d - Wood fence post. W. Walnut 4" di N. 34 W 13 lks. & B. Walnut 5" N 4 3/4 E 32 1/2 lks. 8.58 31.45
- a to b - S 85 E 10.18 chains b to c S 5 W 38.47 chains 13.20
- c to d - with wire fence on Ry curve N. side Ry Right of Way. Hick 15" di W 20 lks. 671.88 2539.02
- d to e - N. S. E. 39.68 chains. 2618.88

INDEXED ON MAP