

Snyder Survey, Feb. 13<sup>th</sup> 1914.

Snow storm 12" above zero. Worst winter day this year.

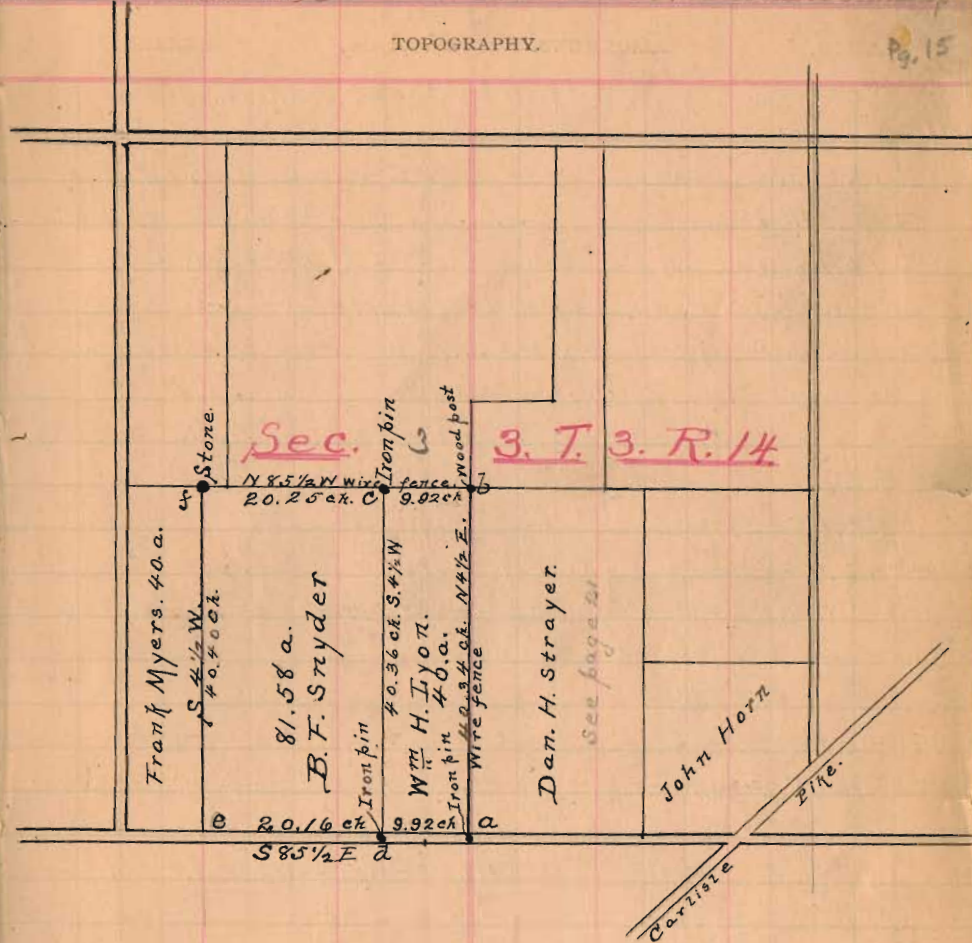
STATION.	ALIGNMENT.	DEFLECTION.	REMARKS
(1)	Start at a iron pin $\frac{3}{4}$ " <sup>12" long</sup> driven today in the apparent center of a public road and recognized S.E. corner of the S.W. quarter section 3. Town 3 Range 14.		Thence with iron fence east line said quarter sec N $4\frac{1}{2}$ E 40.34 <sub>a</sub> , to wooden corner post - b
(2)	Start at 40.34 ch. of (1) = b. Thence with iron fence apparent N. line quar. sec. N $85\frac{1}{2}$ W.		at 9.92 ch. drove iron pin in fence line N $77\frac{1}{2}$ 40. a " 30.17 ch stone N $77\frac{1}{2}$ B.F. Snyder 100 a tract S $4\frac{1}{2}$ E to = f
(3)	Start at stone, 30.17 of (2) = f		S $4\frac{1}{2}$ W. 40.40 chains. post in road apparent sec line
(4)	Start at (a) sta 0 of (1). Thence with road and apparent S. line of sec. 3. N $85\frac{1}{2}$ W		at 9.92 ch. set iron pin S $91\frac{1}{2}$ 40. a. pin $\frac{3}{4}$ " <sup>12"</sup> x 12" long " 30.08 chains post. in public road. S $77\frac{1}{2}$ to Snyder 81.58 a. tract. S $4\frac{1}{2}$ E to Frank Myers 40 a.

Note. The tract a b c d is 40. acres sold by B.F. Snyder to Wm. H. Lyons and line d e was located in this survey. The iron pins at a, c, e, d were driven on this survey.

The above survey made in a fence driving snow storm and impossible to see more than 500 feet through the transit, and corner a. is approximately on the section line, see page 21. this book.

B.F. Snyder Surv. Feb. 13<sup>th</sup> 1914. Cold <sup>12"</sup> Blizzards snowed

Stationers, St. Louis, Mo. Section 3. T. 3. R. 14, Harrison Township



INDEXED ON MAP