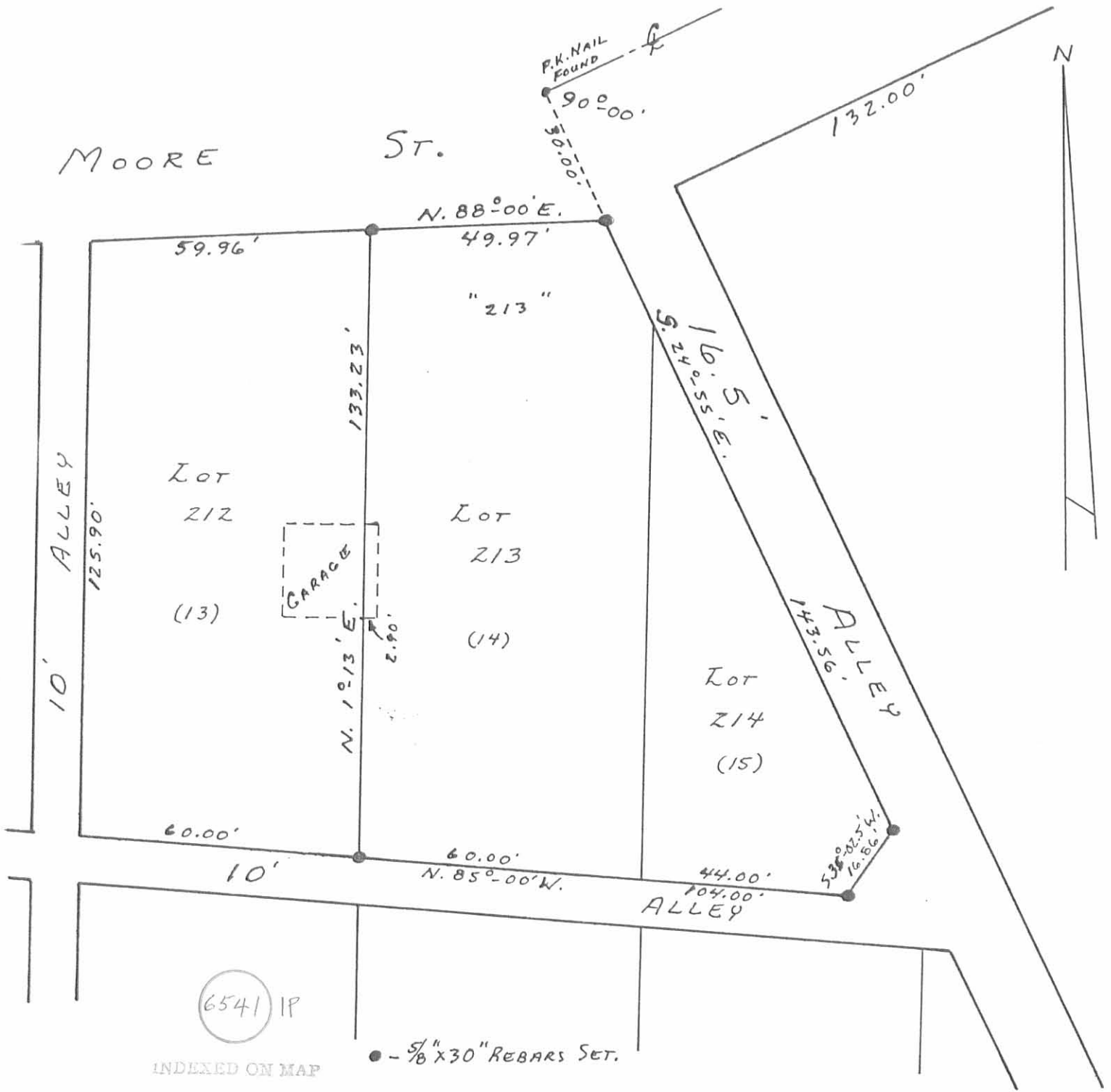


MAP ROOM



INDEXED ON MAP

● - 5/8" X 30" REBARS SET.

REFERENCE:
LIPPINCOTT ADDITION
PLAT CAB. A, SLIDE 85

WALTERS SURVEY
LOTS NO. 213 AND 214
VILLAGE OF DEGRAFF
MIAMI TOWNSHIP
LOGAN COUNTY, OHIO
OCTOBER 8, 1983

SCALE: 1" = 30'

SURVEYED AND PLATTED BY:
DANIEL E. GILBERT, P.S.,
REG. SUR. NO. 5402
1041 N. MAIN ST.
BELLEFONTAINE, OHIO 43311

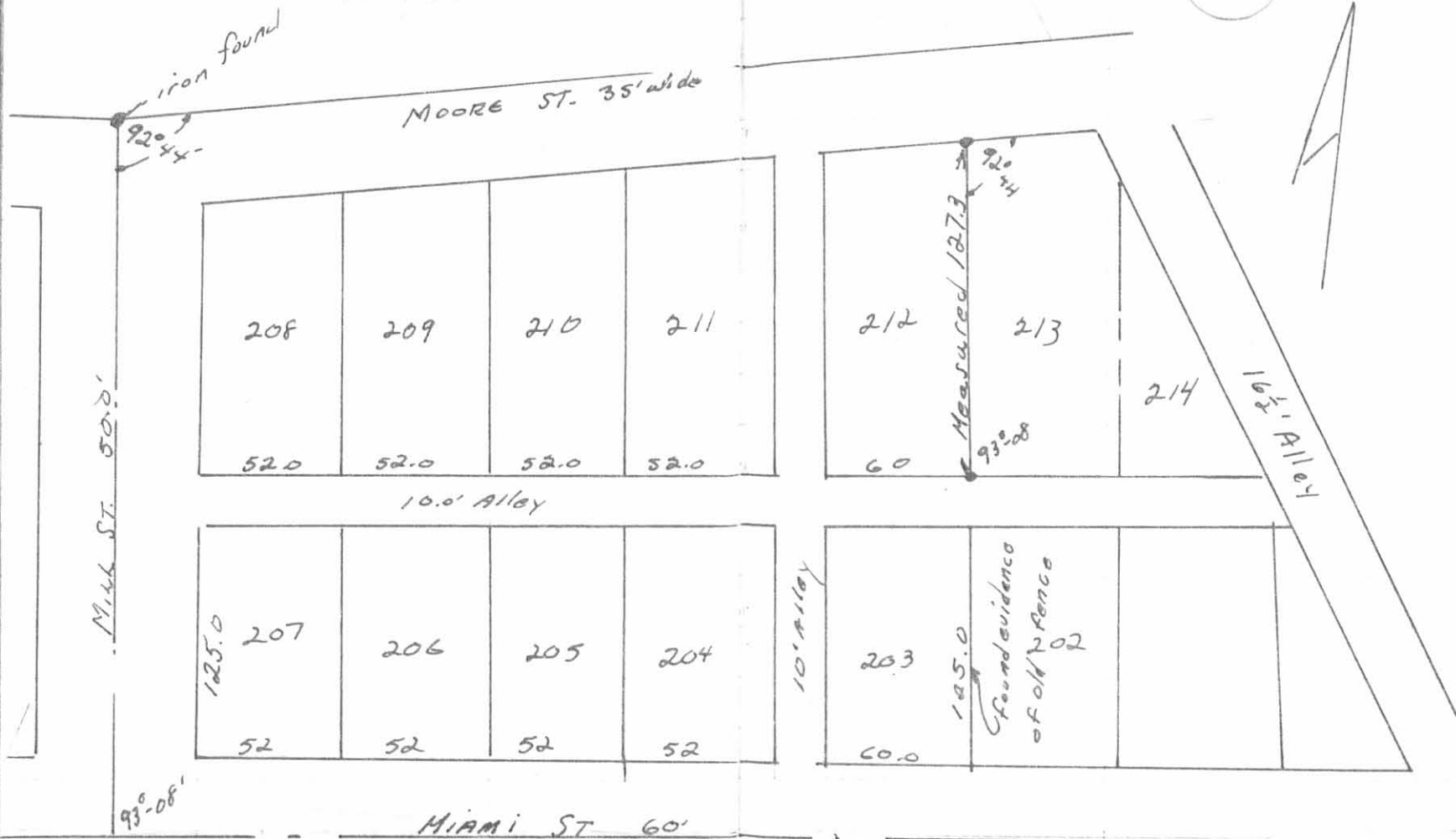
Lots 213 & 214 DeGraff
for H. Hanks

May 4, 1968

47

F.B. O.K.S. 11 PAGE 47

6541 2P



Dist. between Mill & 10' Alley Check by measuring between curbs.