

Shirk 1958

LOFFER SURVEY

Being situated in the Village of DeGraff, Section 1 and 7,
Town 2, Range 14 of Between the Miami Rivers Survey, Miami Town-
ship, Logan County, Ohio.

Beginning at a stone at the intersection of the North Cor-
poration Line and State Route #69 (as shown in F. B. 585 pages
74 and 75 of the County Engineers Office): thence with the center
of State Route #69 S 2° 30' W 1610.5 feet, thence S 31° 30' W
36.8 feet to a iron at the place of beginning for this description.
Said iron also is South line of Wm Notestine 6.75 acre tract.

Thence with the South line of Wm Notestine's 6.75 acre tract
S 87° 23' E 142.0 feet to a corner fence post, passing through a
iron at 33.7 feet; thence S 22° 09' W 242.5 to a iron; thence
N 65° 08' W 165.0 feet to the iron in the center of State Route #69
(Gretcher Street) passing through a iron at 135.0 feet; thence with
the center of State Route #69 N 31° 30' E 190.0 feet to the place
of beginning.

Containing 0.45 of a acre in Section 1 and 0.30 of a acre
in Section 7, making a total of 0.75 of a acre more or less.

Surveyed from:

- 0.45 of a acre from a 6.94 acre tract,
- 0.24 of a acre from a 0.53 acre tract,
- 0.06 of a acre from a 1.24 acre tract.

on Plat

$$\begin{array}{r} 0.06 \\ 6.94 \\ \hline 7.00 \end{array}$$

$$\frac{45}{5.0}$$

$$\frac{1.24}{.54}$$

3126

10-1

LOFFNER TO FUSON SURVEY

Being situated in the Village of DeGraff, Section 1 and 7,
Town 2, Range 14 of Between the Miami Rivers Survey, Miami Town-
ship, Logan County, Ohio.

Beginning at a Stone at the intersection of the North Cor-
poration line and State Route #69 (as shown in F. B. 585 pages
74 and 75 of the County Engineers Office); thence with the center
of State Route #69 S 2° 30' W 1610.5 feet; thence continuing with
State Route #69 S 31° 30' W 226.8 feet to a iron, said iron is
the beginning point for this description. Passing through the
line between Loffner and Notestine at 36.8 feet on the last course.

Thence S 65° 08' E 165.0 feet to a iron passing through a iron
at 30.0 feet; thence S 31° 30' W 252.5 feet to a iron; thence
N 65° 08' W 165.0 feet to the center of State Route #69 (Cretcher
Street) Passing through a corner fence post at 135.0 feet; Thence
with the center of State Route #69 N 31° 30' E 252.5 feet to the
place of beginning.

Containing 0.90 of a acre in Section 7 and 0.05 of a acre in
Section 1, making a total of 0.95 of a acre more or less.

Surveyed from:

- 0.05 of a acre from a 6.94 acre tract,
- 0.64 of a acre from a 1.24 acre tract,
- 0.26 of a acre from a 0.53 acre tract.

one plat

1901.0
136.8
226.8

3126

10-2

INDEXED ON MAP

Shirk 1958

LOFFER TO STEVENS SURVEY

Being situated in the Village of DeGraff, Section 7,
Town 2, Range 14, of Between the Miami Rivers Survey,
Miami Township, Logan County, Ohio.

Beginning at the east right of way of State Route #69
(Cretcher Street) in the South line of Fuson's 0.95 acre
tract, thence with Fuson's south line S65°08'E 72.6 feet
to a corner post; thence S14°11' W 124.7 feet to a corner
post in Steven's 0.23 acre tract; thence with the east
line of Steven's 0.23 acre tract N5°01' W 109.2 feet; again
with Steven's east line N31°45' W 50.3 feet to the place
of beginning for this description.

Containing 0.07 of an acre more or less.

Surveyed from a 0.60 acre tract.

on Plat Book

3126

2D-1

INDEXED ON MAP

Shirk 1958

LOFFER TO FUSON SURVEY

Being situated in the Village of DeGraff, Sections 1 and 7, Town 2, Range 14, of Between the Miami Rivers Survey, Miami Township, Logan County, Ohio.

Beginning at a corner fence post in the northeast corner of Fuson's 0.95 acre tract; thence S28°29' W 251.3 feet to an iron; thence N65° 08' W 13.3 feet to the south east corner of Fuson's 0.95 acre tract; thence with the east side of said Fuson's 0.95 acre tract N31° 30' E 252.5 feet to the place of beginning.

Containing 0.03 of an acre in Section 7 and 0.01 of an acre in Section 1, making a total of 0.04 of an acre more or less.

Surveyed from:

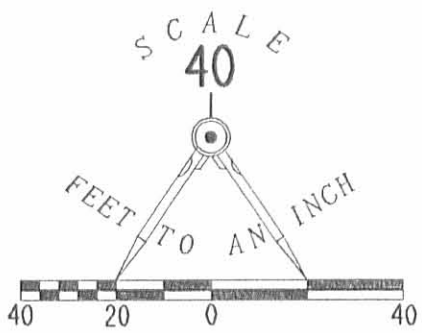
0.01 of an acre from a 5.85 acre tract formerly 6.94 acre
0.01 of an acre from a 0.60 acre tract formerly 1.24 acre
0.02 of an acre from a 0.27 acre tract formerly 0.53 acre

on plat Book

3126
2D-2

INDEXED ON MAP

REC'D 3-31-95 SMY OK



PT. A, LOGAN CO. ENG.
F.B. 584, PG. 75

REFERENCES

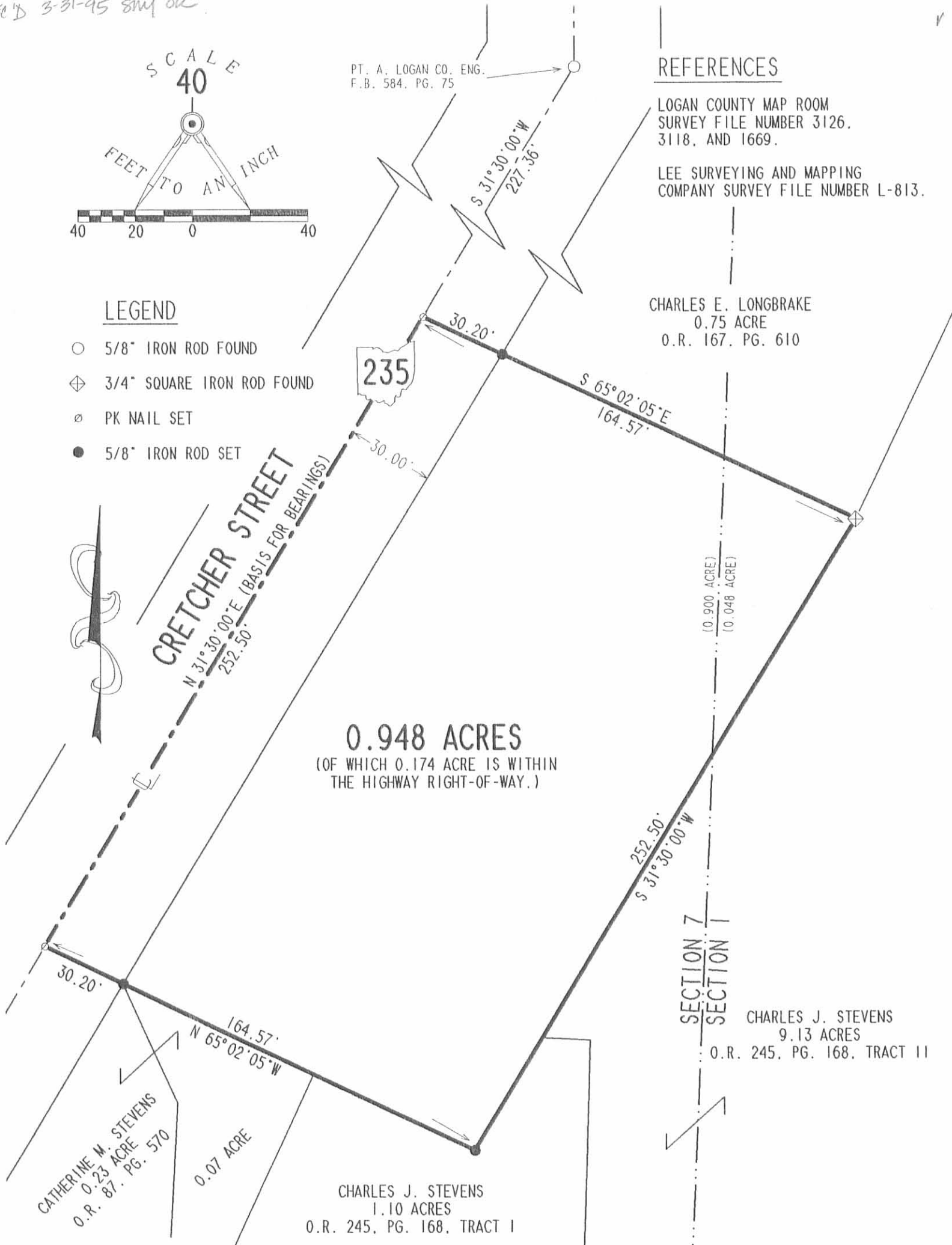
LOGAN COUNTY MAP ROOM
SURVEY FILE NUMBER 3126,
3118, AND 1669.

LEE SURVEYING AND MAPPING
COMPANY SURVEY FILE NUMBER L-813.

CHARLES E. LONGBRAKE
0.75 ACRE
O.R. 167, PG. 610

LEGEND

- 5/8" IRON ROD FOUND
- ◊ 3/4" SQUARE IRON ROD FOUND
- ⊙ PK NAIL SET
- 5/8" IRON ROD SET



RETRACEMENT SURVEY OF THE
PHILIP R. FAWCETT 0.95 ACRE TRACT
(0.948 ACRE BY THIS SURVEY)
OFFICIAL RECORD 67, PAGE 120
SECTIONS 1 AND 7, TOWN 2, RANGE 14
VILLAGE OF DEGRAFF
MIAMI TOWNSHIP
LOGAN COUNTY, OHIO



SURVEYED BY:
[Signature]
JEFFREY I. LEE
PROFESSIONAL SURVEYOR 6359
MARCH 27, 1995

COPYRIGHT 1995 BY:
LEE SURVEYING & MAPPING C
13 East Columbus Avenue
BELLEFONTAINE, OHIO 43311
(513) 593-7335

2 WORKING DAYS
BEFORE YOU DIG
CALL TOLL FREE **800-362-2764**

INDEXED ON MAP
3126 3P

D 255 PFAWCETT L-2275-4