

EARTHA ALLISON TO DAVID ALLISON DESCRIPTION
(April, 1962)

Being situated in Section 12, Town 3, Range 13 of Between
the Miami River Survey, Miami Township, Logan County, Ohio;
and being within the corporation of DeGraff.

Beginning at an iron in the center of Mill Street at the
northwest corner of David Allison's 0.55 acre tract;

Thence continuing with the center of Mill Street N 9°-30'W
21.6 feet to an iron.

Thence N 4°-58'E 233.0 feet.

Thence S84°-57'E 135.8 feet to a corner post at the north-
east corner of David Allison's 0.55 acre tract, passing thru
an iron at 20.0 feet.

Thence S65°-20'E 44.2 feet to a corner post.

Thence S18°-42'E 137.3 feet to a corner post.

Thence S59°-14'W 32.2 feet to a corner post at the south-
east corner of David Allison's 0.55 acre tract.

Thence with the east line of said 0.55 acre tract N18°-42'W
174.6 feet to a corner post.

Thence with the north line of said 0.55 acre tract S32°-11'W
285.5 feet to the place of beginning.

Containing 0.52 of an acre more or less-

0.41 of an acre from a 3.13 acre tract.

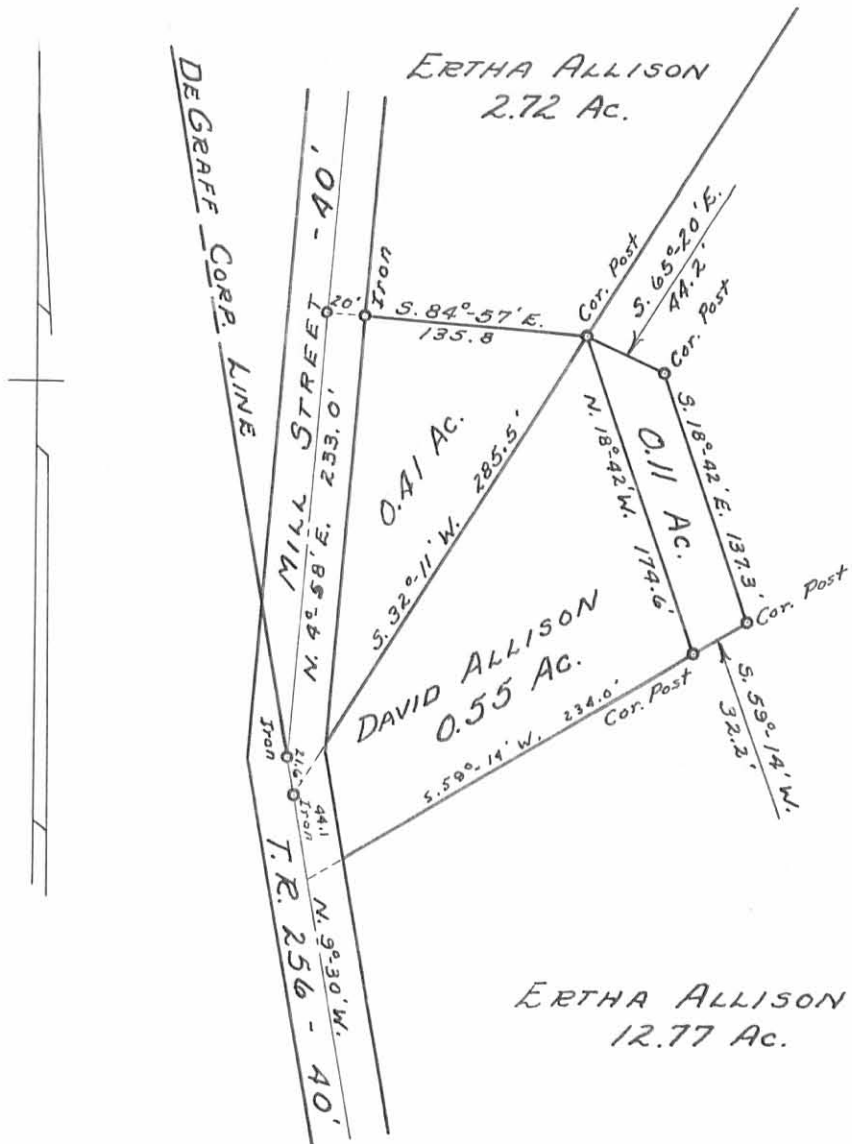
0.11 of an acre from a 12.88 acre tract.

Owen K. Shirk
Surveyor #4271

2743 ID.

INDEXED ON MAP

on Plat Book
D.E.G.
5/1/62



ERTHA ALLISON to DAVID ALLISON SURVEY
 SEC. 12 - T. 3 - R. 13 M.R.S. - DEGRAFF CORP.
 MIAMI TOWNSHIP, LOGAN COUNTY, OHIO
 SURVEYED BY O. K. SHIRK - #4271 - APRIL 1962

SCALE: 1" = 100'

2743 IP

INDEXED ON MAP

DRAWN BY D.E.G. 3/2/62