

De Graff  
Boggs St.

FB 654

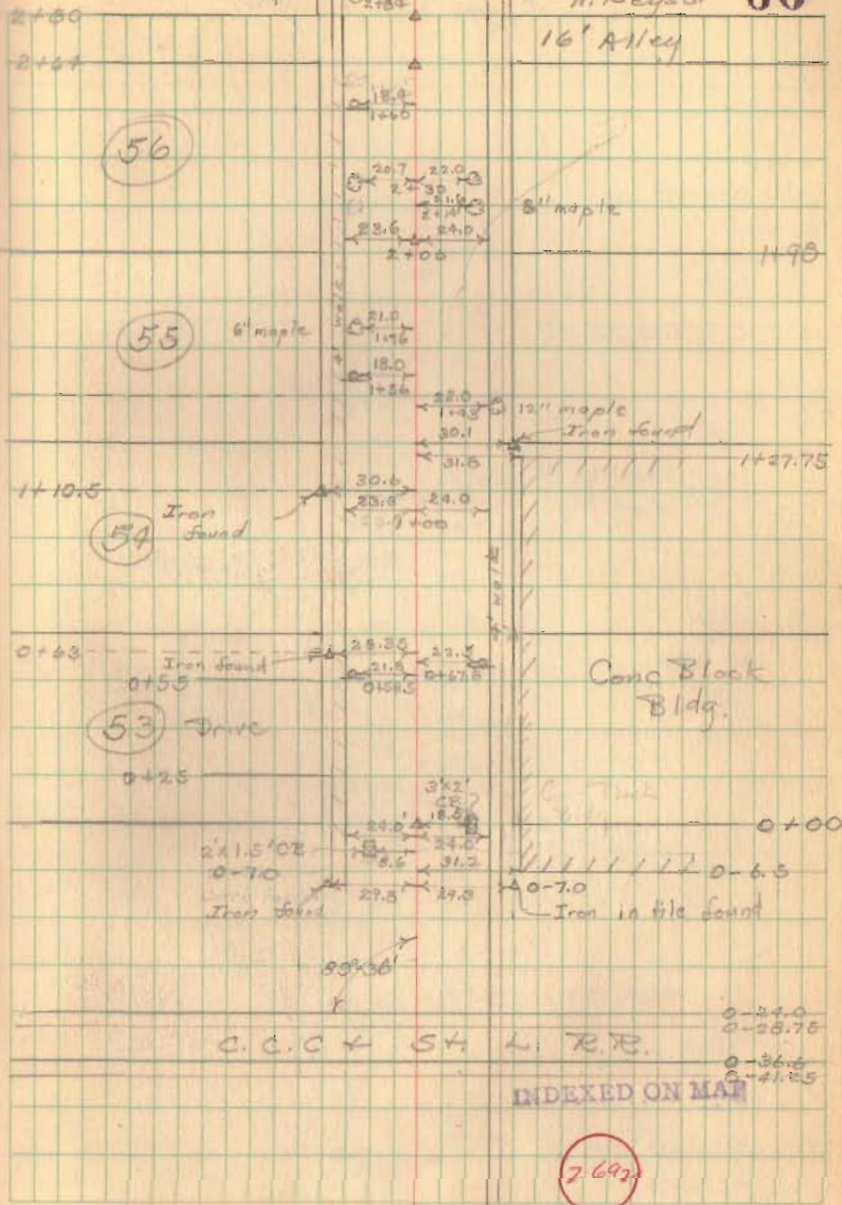
4-RR spikes set  
2-Utility poles

26  
44  
26  
18

26  
3  
18

8" maple  
30" maple

C. Keyser  
D. Dutton  
V. Detrick  
H. Keyser 60

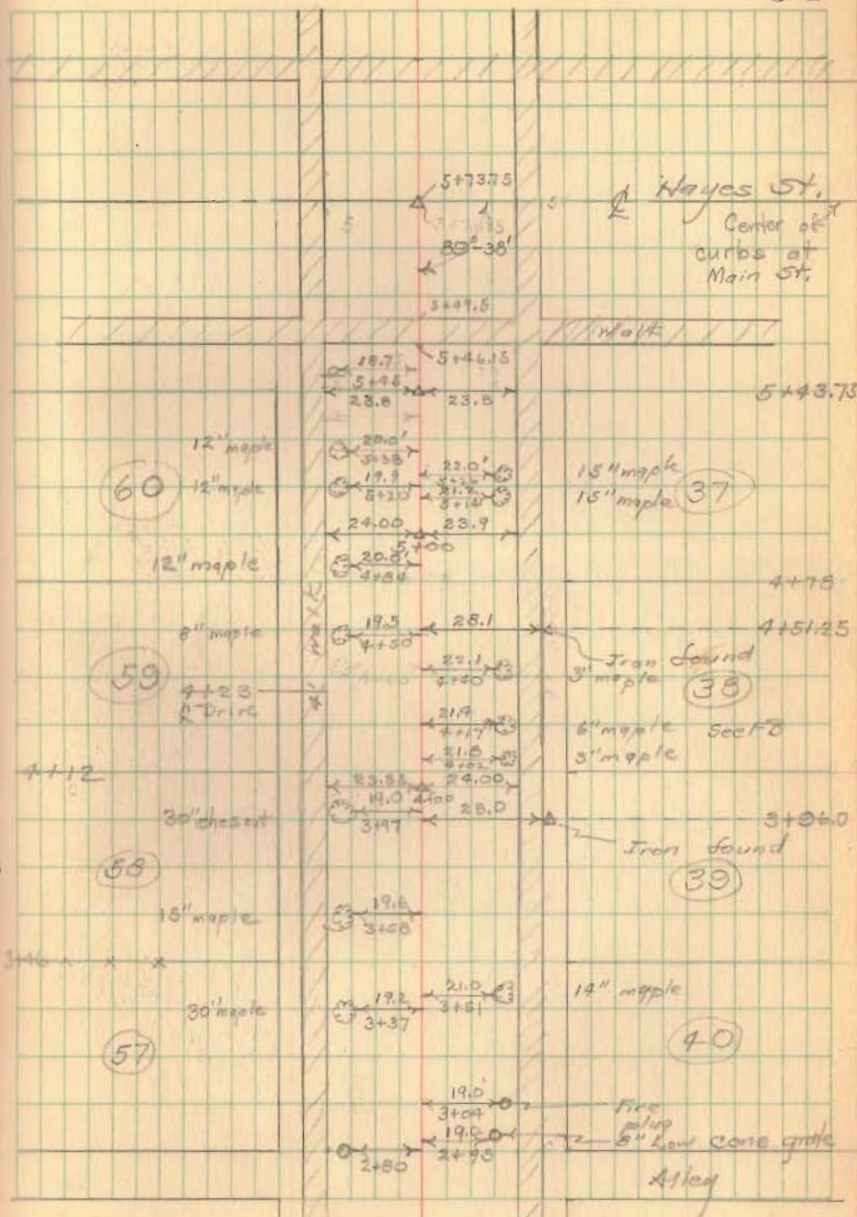


FB 654

DeGraff  
 Boggs St. (contd)

179-16-40

61

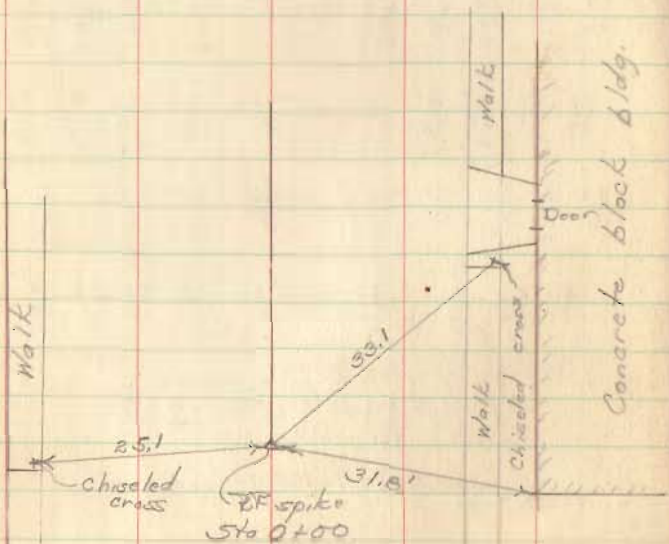




FB 694

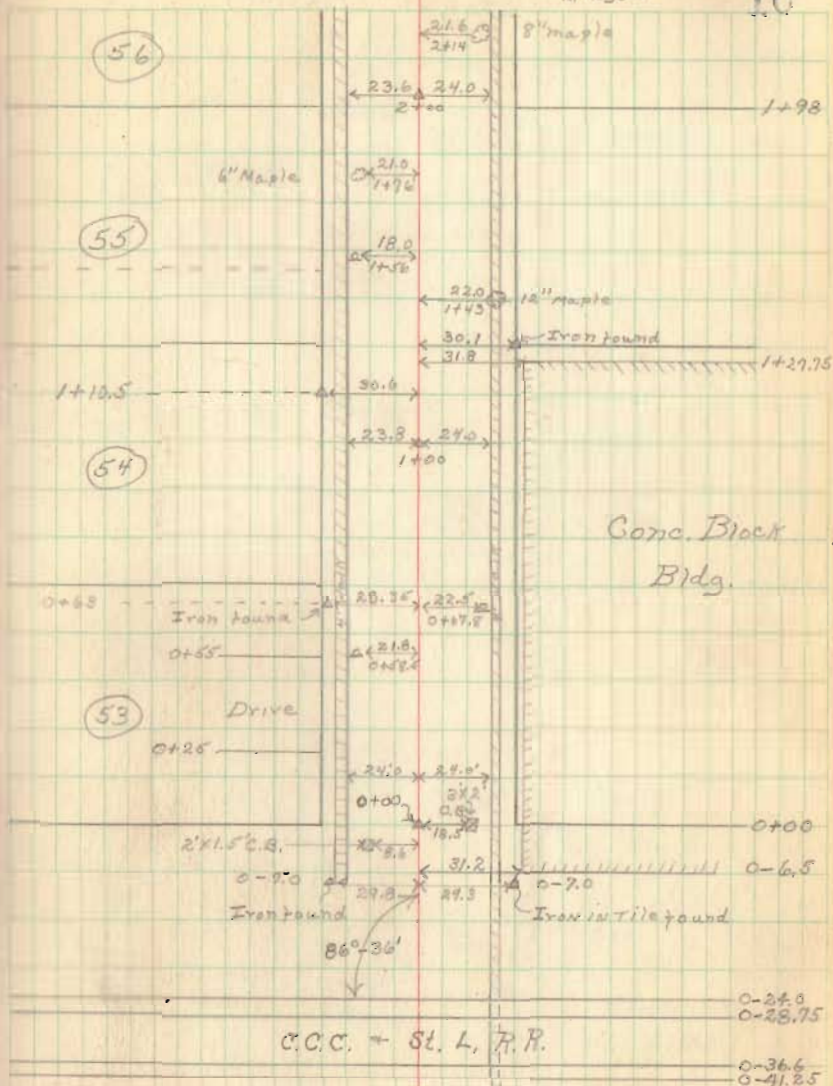
De Graff  
 Boggs St.  
 60' Wide  
 Δ R.R. spikes set, unless otherwise noted  
 & Utility poles

Witnesses to Sta 0+00



C. Keyser  
 D. Dodson  
 V. Debrault  
 M. Keyser

10

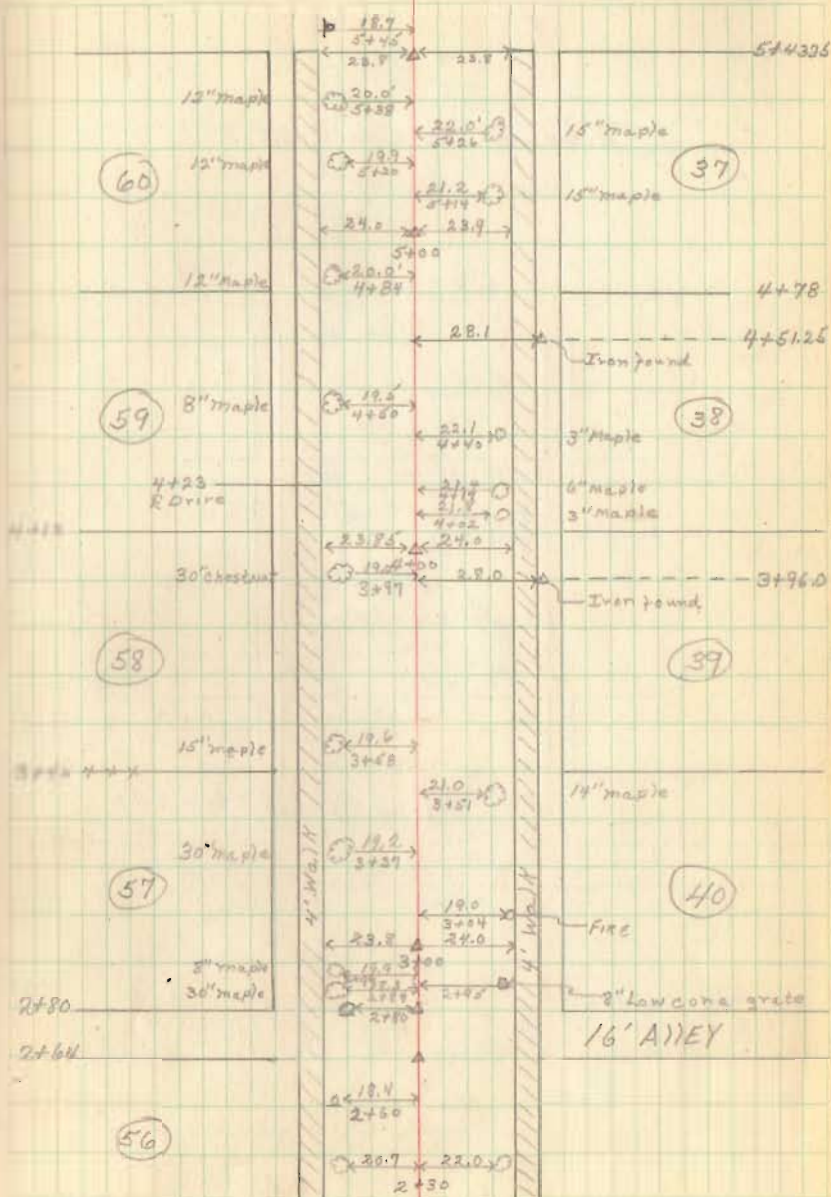


26 92

FB 694

De Graff  
Boggs St. Cont'd)

11

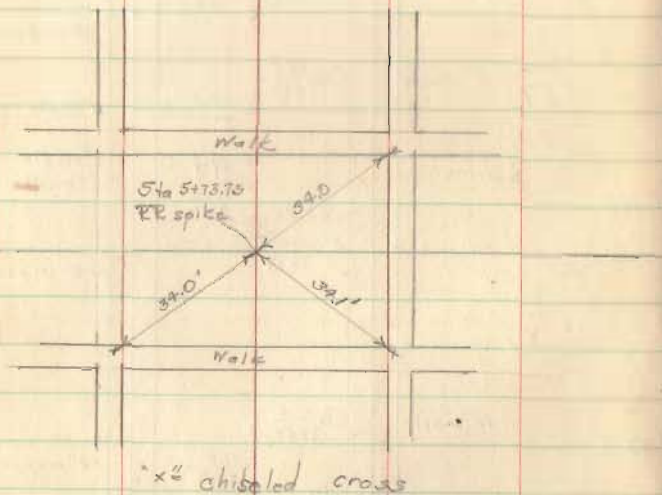




FB 694

Joggs St. (Contd)

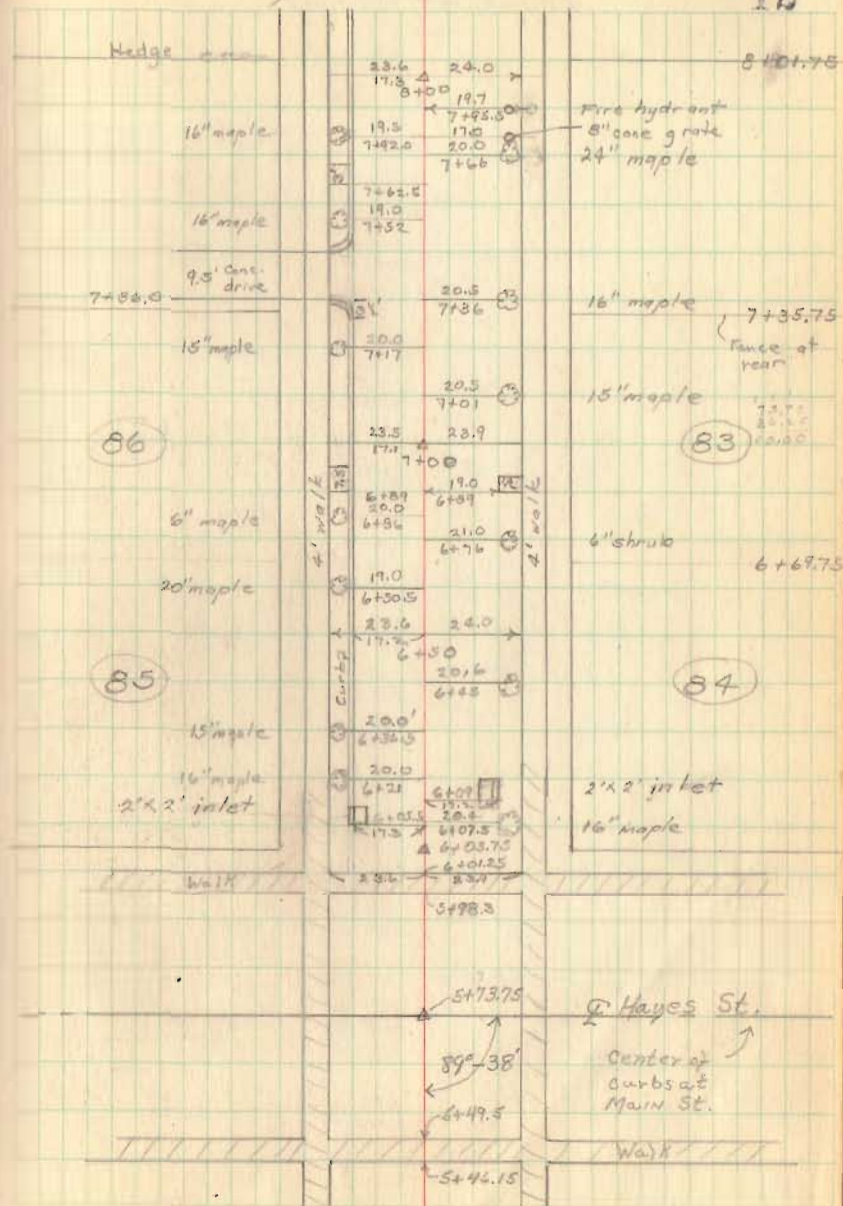
Nitassas to Sta. 5+73.75



Nov. 6, 1950

C. Keyser V. Detrick  
D. Wilson N. Keyser

12



FB 694

Diggs St. (contd)

Nov. 6, 1950

13

			23.9	23.85	
			17.4	11.00	
	14" maple		19.5		
			10+81		
		30'			
10+60.25	6" maple		10+75		
			20.0		
			10+64		
		50'			
	8" maple		10+36		
			21.0		
			10+32		
			N. 23° 0' 45" W.		
	24" maple		19.5		
			10+10		
			23.8	24.0'	
			17.6		
			10+00		
		20'			
	24" maple		9+87		
			20.0		
			9+55		
		20'			
			21.0		
			9+37		
			21.0		
			9+15		
			23.75	23.56	
			17.4		
			9+00		
			20.0		
			8+43		
			20.7		
			8+55		
			2'		
			19.5		
			8+66		
			20.0		
			8+54		
			19.5		
			8+46		
			21.0		
			8+33		
			19.5		
			8+28		
			20.0		
			8+04		

10+14.25

9+50.25

10" maple

10" maple

8+84.25

Alley

8+67.75

18" maple

3" maple

12" maple

Nudge at rear

18" maple

8" maple

Fence x x x x

12" maple

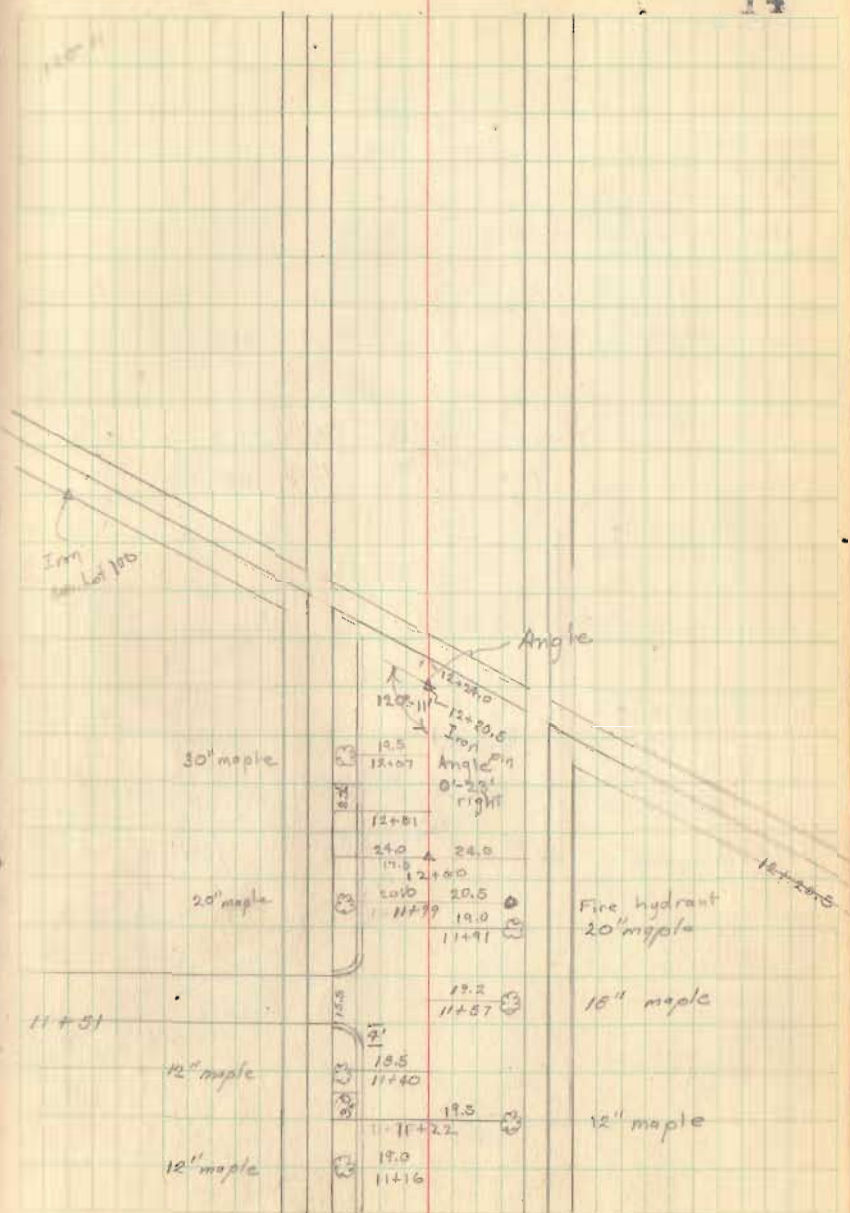
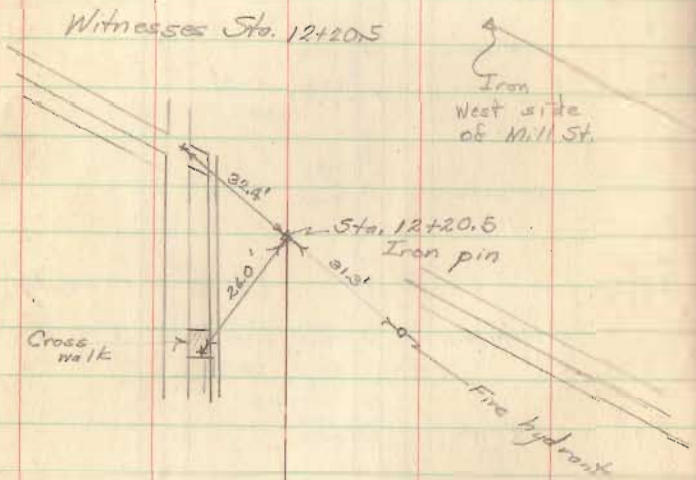
20" maple

14" maple

4' walk

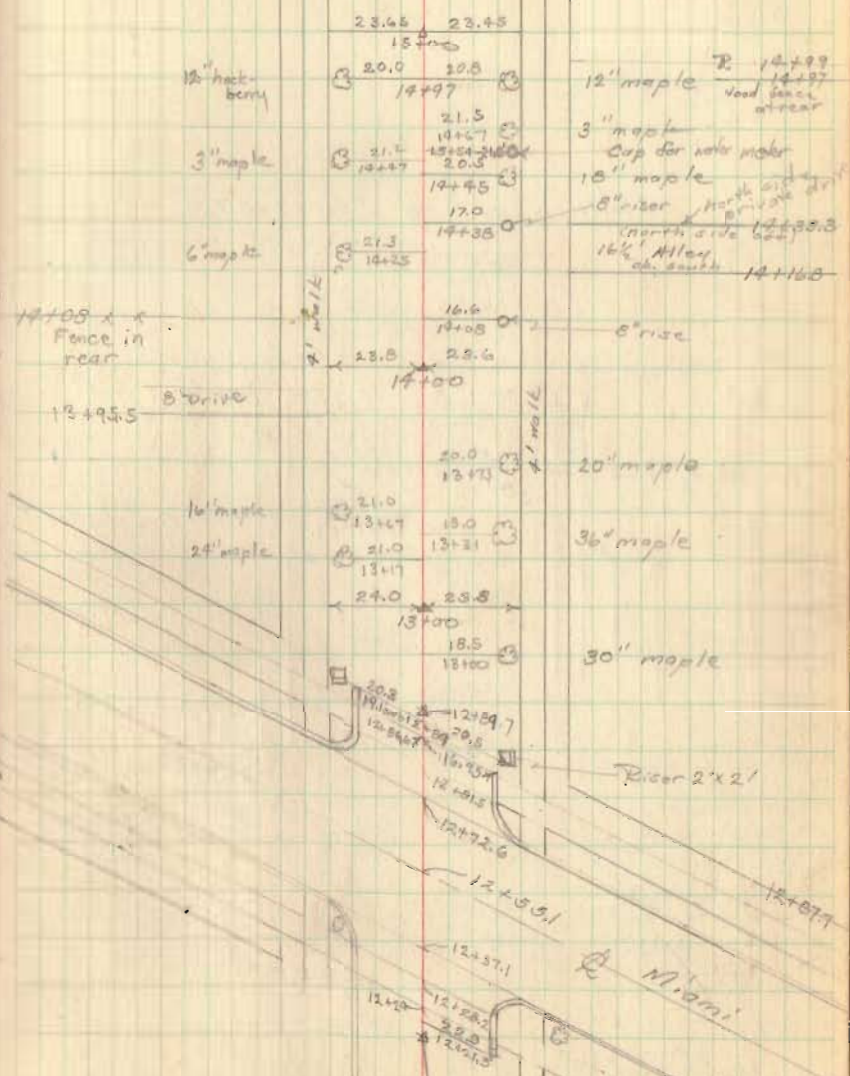
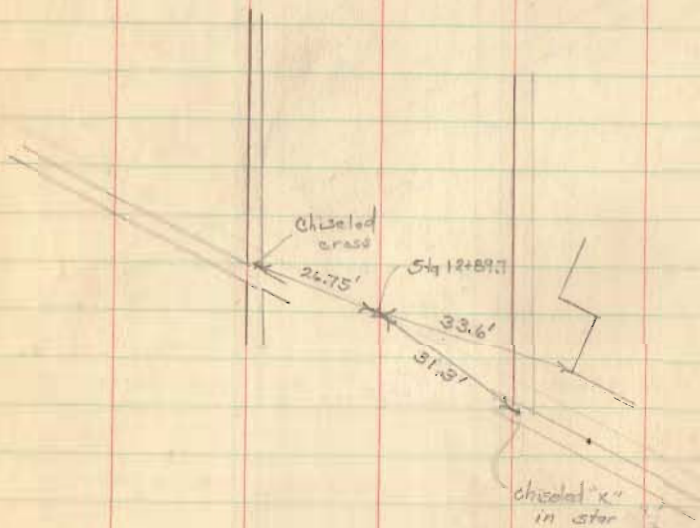
4' walk





55  
30  
8

N. masses to S6. 12+89.7

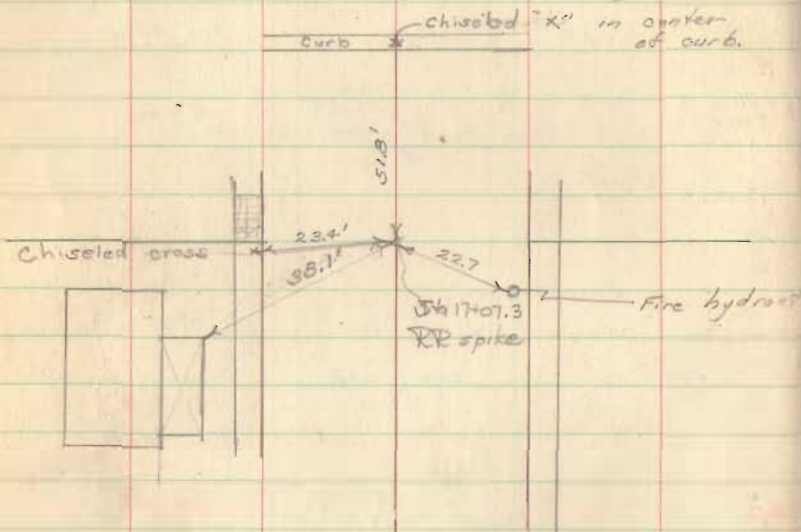




FB 694

Boggs St. (cont'd)

Witnesses to Sto 17+07.3



Nov. 7, 1950

School yard

16

